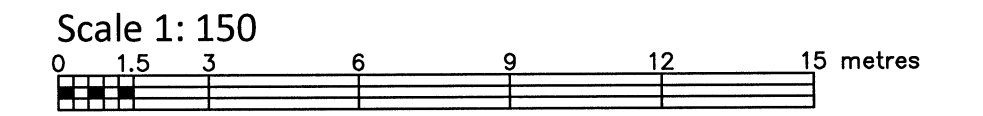


PART OF LOT 8
CONCESSION JUNCTION GORE
GEOGRAPHIC TOWNSHIP OF GLOUCESTER
CITY OF OTTAWA

FARLEY, SMITH & DENIS SURVEYING LTD. 2021



Metric Note
Distances and coordinates on this plan are in metres and can be converted to feet by dividing by 0.3048.

Distance Note
Distances shown on this plan are ground distances and can be converted to grid distances by multiplying by the combined scale factor of 0.99995.

Bearing Note
Bearings hereon are grid bearings derived from the Can-Net Real Time Network and are referred to the Central Meridian of MTM Zone 9 (76°30' West Longitude) Nad-83 (Original).

For bearing comparisons, a rotation of 0°28'30" counter-clockwise was applied to bearings on P1, P2, P3 & P6.

Elevation Notes
1. Elevations shown are geodetic and are referred to Geodetic Datum CGVD-1928 -1978 (FSD File No. 01-17)
2. It is the responsibility of the user of this information to verify that the job benchmark has not been altered or disturbed and that its relative elevation and description agrees with the information shown on this drawing.

Utility Notes
1. This drawing cannot be accepted as acknowledging all of the utilities and it will be the responsibility of the user to contact the respective utility authorities for confirmation.
2. Only visible surface utilities were located.
3. Elevation of utility data compiled from City of Ottawa utility sheet reference: E-16-08, E-16-15, 13904 and 036-2.
4. Sanitary and storm sewer grades and inverts were derived/compiled from: Field measurement, City of Ottawa
5. A field location of underground plant by the pertinent utility authority is mandatory before any work involving breaking ground, probing, excavating etc.

Notes & Legend table with symbols for Denotes and a list of utility symbols and their descriptions.

ASSOCIATION OF ONTARIO LAND SURVEYORS
PLAN SUBMISSION FORM
V-10891
THIS PLAN IS NOT VALID UNLESS IT IS AN EMBOSSED ORIGINAL COPY ISSUED BY THE SURVEYOR IN ACCORDANCE WITH REGULATION 1026, SECTION 29 (3).

TOPOGRAPHIC DATA WAS COLLECTED UNDER WINTER CONDITIONS. SNOW COVER AND ICE PRECLUDE DETERMINING LOCATION AND ELEVATION OF SOME TOPOGRAPHICAL DATA THAT IS OTHERWISE VISIBLE.

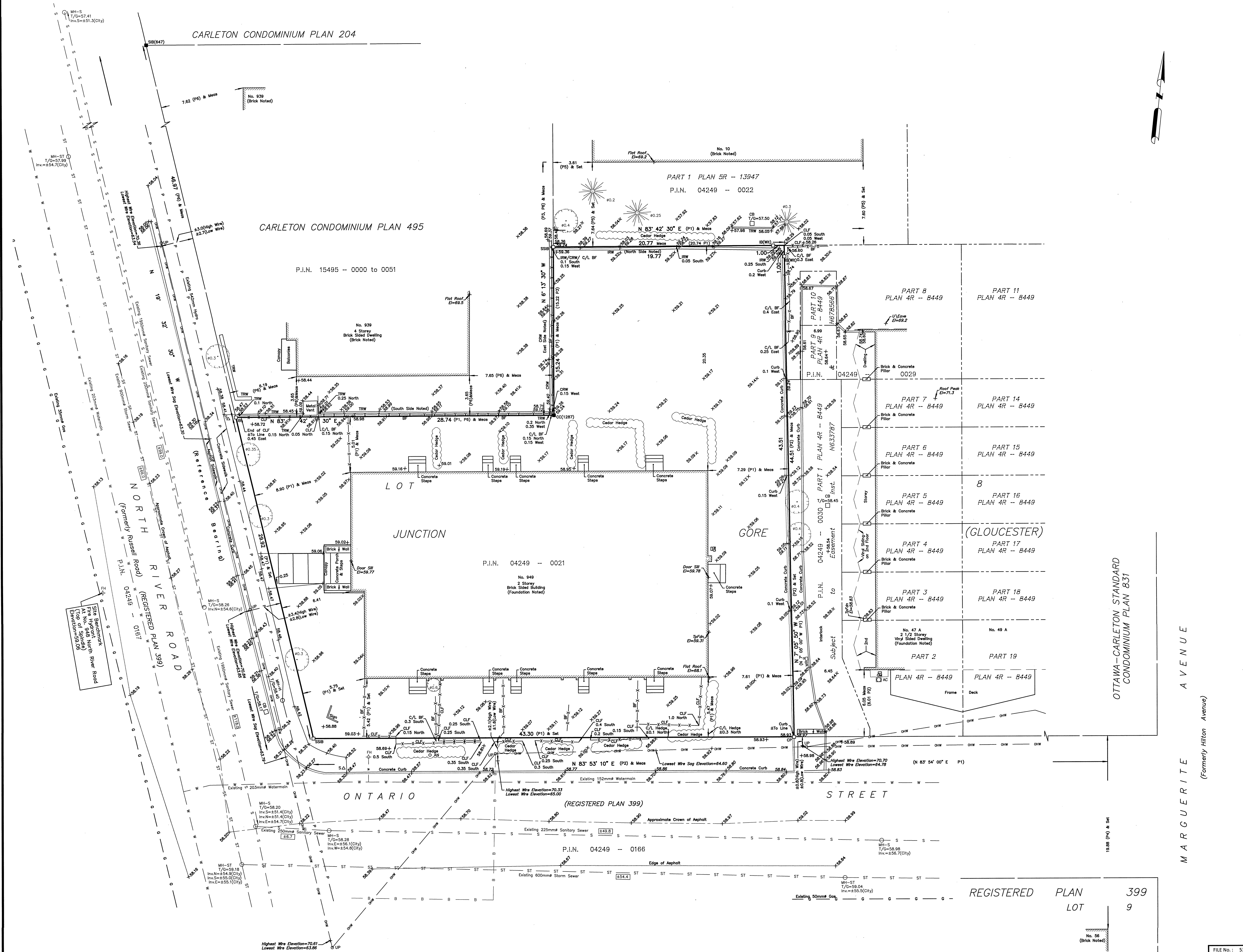
WARNING NO PERSON MAY COPY, REPRODUCE, DISTRIBUTE OR ALTER THIS PLAN IN WHOLE OR IN PART WITHOUT THE WRITTEN PERMISSION OF FARLEY, SMITH & DENIS SURVEYING LTD. © FARLEY, SMITH & DENIS SURVEYING LTD., 2021.

Surveyor's Certificate
1. This survey and plan are correct and in accordance with the Surveys Act, the Surveyors Act and the Regulations made under them.
2. The survey was completed on the 11th day of March, 2021.

March 23/2021
Emad Alrefaai
Ontario Land Surveyor

FARLEY, SMITH & DENIS SURVEYING LTD.

ONTARIO LAND SURVEYORS
CANADA LAND SURVEYORS
190 COLONNADE ROAD, OTTAWA, ONTARIO K2E 7J5
TEL. (613) 727-8226 FAX. (613) 727-1826



OTTAWA-CARLETON STANDARD CONDOMINIUM PLAN 831

MARGUERITE AVENUE (Formerly Hilton Avenue)

REGISTERED PLAN 399 LOT 9

No. 56 (Brick Noted)