



# PHASE 1 \_ 1500 MERIVALE-CLARIDGE HOMES

1500 Merivale Road, Ottawa K2E 6Z5

DRAWING LIST	
A-1_000	COVER SHEET
A-1_010-B	SITE PLAN_PHASE 1
A-1_020	SHADOW ANALYSIS
A-1_021	SHADOW ANALYSIS
A-1_022	SHADOW ANALYSIS
A-1_030	MODEL VIEWS
A-1_100-A	UNDERGROUND FLOOR PLAN – P1 & P2 MERIVALE
A-1_100-B	UNDERGROUND FLOOR PLAN – P3 MERIVALE
A-1_101	GROUND FLOOR MERIVALE PLAN - SECOND FLOOR MERIVALE
A-1_102	TYPICAL FLOOR PLAN (3,4,5,6,7) - TYPICAL FLOOR PLAN (8,9)
A-1_103	10TH FLOOR MERIVALE - ROOF PLAN
A-1_200	SECTIONS
A-1_300	ELEVATIONS
A-1_301	ELEVATIONS

CLIENT: **CLARIDGE HOMES**  
 210 Gladstone Avenue  
 OTTAWA, ONTARIO K2P 0Y6  
 T: (613) 233-6030 F: (613) 233-6290

ARCHITECTS: **EVOQ**  
 1435, RUE SAINT-ALEXANDRE, BUREAU 1000  
 MONTRÉAL (QUÉBEC) H3A 2G4  
 T: 514-393-9490 F: 514-393-9498  
 info@evoqarchitecture.com

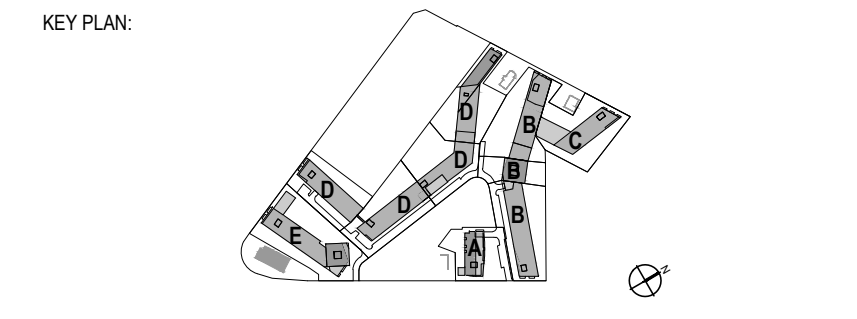
LANDSCAPE ARCHITECTS: **James B. Lennox and Associates Inc. Landscape Architects**  
 3332 Carling Avenue,  
 Ottawa, Ontario, K2H 5A8, T: (613) 722 5168

STRUCTURAL ENGINEERS: **GOODEVE STRUCTURAL INC.**  
 177 Avenue St. Jean - 16e Etage, Ottawa, ON K2E 7Z2  
 Tel: 613-254-5558 www.goodevestructural.ca

CIVIL ENGINEERS: **NOVATECH ENGINEERING CONSULTANTS LTD.**  
 ENGINEERS & PLANNERS  
 Suite 200, 240 Michael Cowland Dr.  
 Ottawa, Ontario, Canada K2M 1P6  
 Telephone: (613) 254-6643  
 Facsimile: (613) 254-6667  
 Email: novatech@novatech-engineg.com

URBAN DESIGN CONSULTANTS: **FOTENN Planning + Design**  
 Fontenn  
 396 Cooper St, Suite 300  
 Ottawa, ON K2P 2H7  
 www.fotenn.com

TOPOGRAPHICAL SURVEYOR: **Annis O'Sullivan, Vollebek Ltd., Ontario Land Surveyors**  
 14 Concourse Gate, Suite 500  
 Nepean, Ontario, K2E 7S6  
 Tel: (613) 727-0850  
 email: nepean@osvold.com



NO.	DESCRIPTION	DATE
	SITE PLAN CONTROL - PHASE 1 - REVISED 02	2023-10-12
	SITE PLAN CONTROL - PHASE 1 - REVISED	2023-06-21
	SITE PLAN CONTROL - PHASE 1	2022-12-01
	SITE PLAN CONTROL	2021-09-17
	ISSUED FOR COORDINATION	2021-05-27

THE GENERAL CONTRACTOR :

- SHALL BE RESPONSIBLE FOR VERIFYING ALL DIMENSIONS ON SITE TO ENSURE COMPLIANCE WITH THE DIMENSIONS GIVEN ON THE DRAWINGS.
- SHALL BE RESPONSIBLE TO IMMEDIATELY SUBMIT A REPORT TO THE ARCHITECT OR ENGINEER OUTLINING ANY INACCURACIES.
- SHALL NOT TAKE SCALED MEASUREMENTS OFF THE DRAWINGS.
- ANY INDIVIDUAL OR FIRM THAT HAVE RECEIVED ELECTRONIC DOCUMENT SHALL USE THEM AT THEIR OWN RISK. ONLY ORIGINAL DRAWINGS, STAMPED BY THE ARCHITECT, MAY BE USED FOR CONSTRUCTION.

SEAL

© 2018, EVOQ Architecture inc.

Intellectual property rights relating to this document belong exclusively to EVOQ Architecture inc. This document may not be forwarded to others, transmitted, downloaded, reproduced nor adapted in any format, whether print or electronic, without the prior written authorization of EVOQ Architecture inc. All ideas and other information in this document are specific to this project and may not be used elsewhere without the written authorization of EVOQ Architecture inc.

PROJECT: **1500 MERIVALE**

DRAWING TITLE: **COVER SHEET**

DESIGN:	NG	APPROVED:	XX
DRAWN:	SJ-CH	DATE:	2022-10-30
VERIFIED:	XX	SCALE:	S.O.
PROJECT N°:	9426-20	DRAWING N°:	A-1_000





December 21st EDT

September 21st EDT

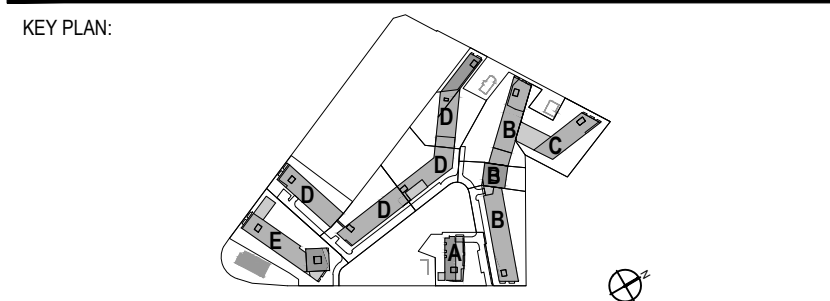
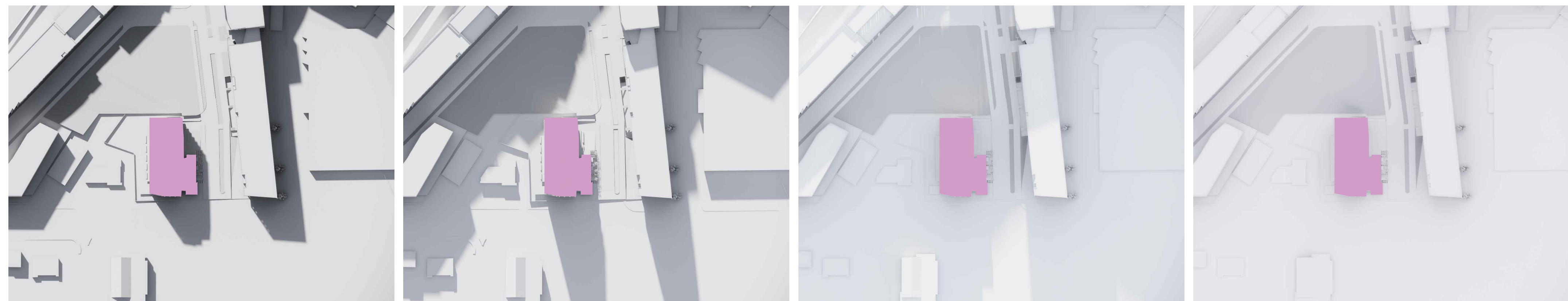
June 21st EDT

5:00 PM

6:00 PM

7:00 PM

8:00 PM



NO.	DESCRIPTION	BY	DATE
	SITE PLAN CONTROL - PHASE 1 - REVISED 02		2023-10-12
	SITE PLAN CONTROL - PHASE 1 - REVISED		2023-06-21
	SITE PLAN CONTROL - PHASE 1		2022-12-01
	SITE PLAN CONTROL		2021-09-17
	ISSUED FOR COORDINATION		2021-05-27

THE GENERAL CONTRACTOR :

- SHALL BE RESPONSIBLE FOR VERIFYING ALL DIMENSIONS ON SITE TO ENSURE COMPLIANCE WITH THE DIMENSIONS GIVEN ON THE DRAWINGS.
- SHALL BE RESPONSIBLE TO IMMEDIATELY SUBMIT A REPORT TO THE ARCHITECT OR ENGINEER OUTLINING ANY INACCURACIES.
- SHALL NOT TAKE SCALED MEASUREMENTS OFF THE DRAWINGS.
- ANY INDIVIDUAL OR FIRM THAT HAVE RECEIVED ELECTRONIC DOCUMENT SHALL USE THEM AT THEIR OWN RISK. ONLY ORIGINAL DRAWINGS, STAMPED BY THE ARCHITECT, MAY BE USED FOR CONSTRUCTION.

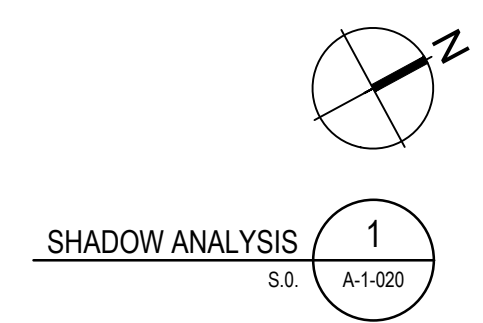
SEAL © 2018, EVOQ Architecture inc.  
 Intellectual property rights relating to this document belong exclusively to EVOQ Architecture inc. This document may not be forwarded to others, transmitted, downloaded, reproduced nor adapted in any format, whether print or electronic, without the prior written authorization of EVOQ Architecture inc. All ideas and other information in this document are specific to this project and may not be used elsewhere without the written authorization of EVOQ Architecture inc.

PROJECT: **1500 MERIVALE**

DRAWING TITLE: **SHADOW ANALYSIS**

DESIGN: NG APPROVED: XX  
 DRAWN: SJCH DATE: 2022-10-30  
 VERIFIED: XX SCALE: S.O.

PROJECT N°: **9426-20** DRAWING N°: **A-1\_022**





View 05 - SOUTH FROM MERIVALE ROAD



View 04 - NORTH FROM THE PHASE 2



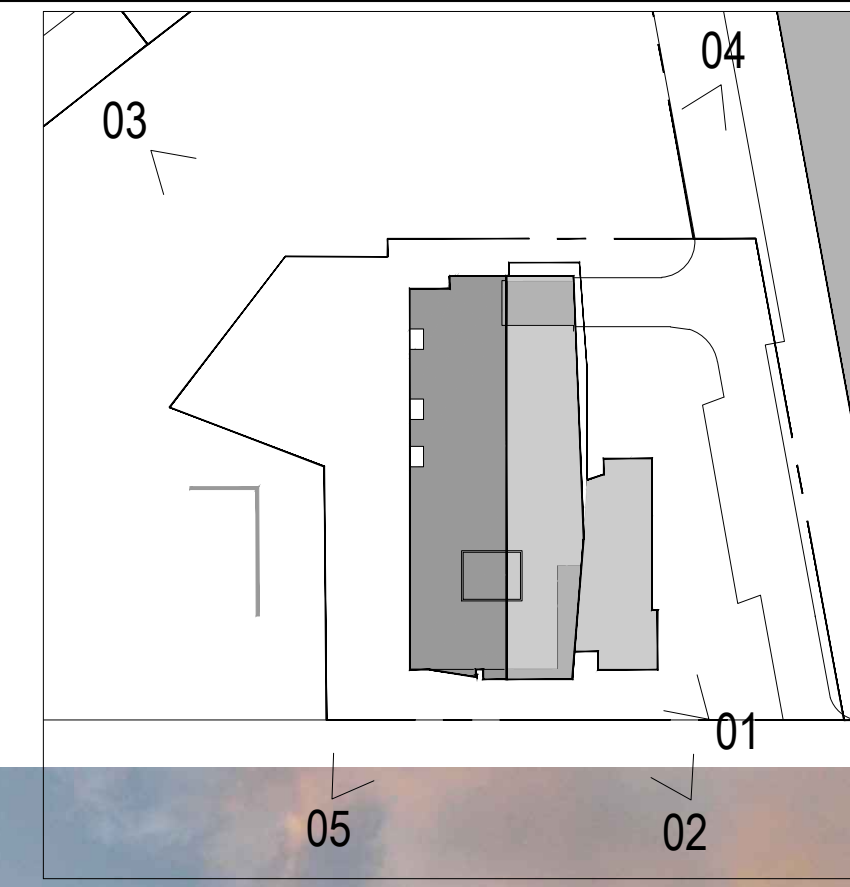
View 03 - FROM THE PUBLIC PARK



View 02 - CORNER MERIVALE ROAD AND THE NEW PUBLIC STREET



View 01 - CORNER MERIVALE ROAD - BUILDING ACCESS



CLIENT:  
**CLARIDGE HOMES**

210 Gladstone Avenue  
 OTTAWA, ONTARIO K2P 0Y6  
 T: (613) 233-6030 F: (613) 233-8290

ARCHITECTS:  
**EVOQ**

1435, RUE SAINT-ALEXANDRE, BUREAU 1000  
 MONTREAL (QUEBEC) H3A 2G4  
 T: 514-393-9490 F: 514-393-9498  
 info@evoqarchitecture.com

LANDSCAPE ARCHITECTS:  
**James B. Lennox and Associates Inc.**  
 Landscape Architects

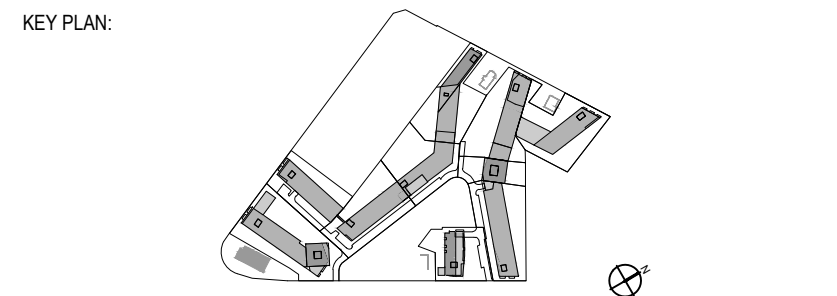
3332 Carling Avenue,  
 Ottawa, Ontario, K2H 5A8, T: (613) 722-5168

STRUCTURAL ENGINEERS:  
**GOODEVE STRUCTURAL INC.**  
 77 Avenue St. - Suite 16 - Ottawa, ON K2E 7Z2  
 Tel: 613-258-1858 www.goodevestructural.ca

CIVIL ENGINEERS: **NOVATECH ENGINEERING CONSULTANTS LTD.**  
 ENGINEERS & PLANNERS  
 Suite 200, 240 Michael Cowland Dr.  
 Ottawa, Ontario, Canada K2M 1P6  
 Telephone: (613) 254-5843  
 Facsimile: (613) 254-5887  
 Email: novaird@novatech.ca

URBAN DESIGN CONSULTANTS:  
**FOTENN**  
 Planning + Design  
 Fontenn  
 396 Cooper St, Suite 300  
 Ottawa, ON K2P 2H7  
 www.fotenn.com

TOPOGRAPHICAL SURVEYOR:  
**Annis O'Sullivan, Vollebakk Ltd.,**  
 Ontario Land Surveyors  
 14 Concourse Gate, Suite 500  
 Nepean, Ontario, K2E 7S6  
 Tel: (613) 727-0850  
 email: nepean@avold.com



NO.	DESCRIPTION	DATE
1	SITE PLAN CONTROL - PHASE 1 - REVISED 02	2023-10-12
2	SITE PLAN CONTROL - PHASE 1 - REVISED	2023-06-21
3	SITE PLAN CONTROL - PHASE 1	2022-12-01
4	SITE PLAN CONTROL	2021-09-17
5	ISSUED FOR COORDINATION	2021-05-27

THE GENERAL CONTRACTOR :

- SHALL BE RESPONSIBLE FOR VERIFYING ALL DIMENSIONS ON SITE TO ENSURE COMPLIANCE WITH THE DIMENSIONS GIVEN ON THE DRAWINGS.
- SHALL BE RESPONSIBLE TO IMMEDIATELY SUBMIT A REPORT TO THE ARCHITECT OR ENGINEER OUTLINING ANY INACCURACIES.
- SHALL NOT TAKE SCALED MEASUREMENTS OFF THE DRAWINGS.
- ANY INDIVIDUAL OR FIRM THAT HAVE RECEIVED ELECTRONIC DOCUMENT SHALL USE THEM AT THEIR OWN RISK. ONLY ORIGINAL DRAWINGS, STAMPED BY THE ARCHITECT, MAY BE USED FOR CONSTRUCTION.

SEAL: © 2018, EVOQ Architecture Inc.  
 Intellectual property rights relating to this document belong exclusively to EVOQ Architecture Inc. This document may not be forwarded to others, transmitted, downloaded, reproduced nor adapted in any format, whether print or electronic, without the prior written authorization of EVOQ Architecture Inc. All ideas and other information in this document are specific to this project and may not be used elsewhere without the written authorization of EVOQ Architecture Inc.

PROJECT:  
**1500 MERIVALE**

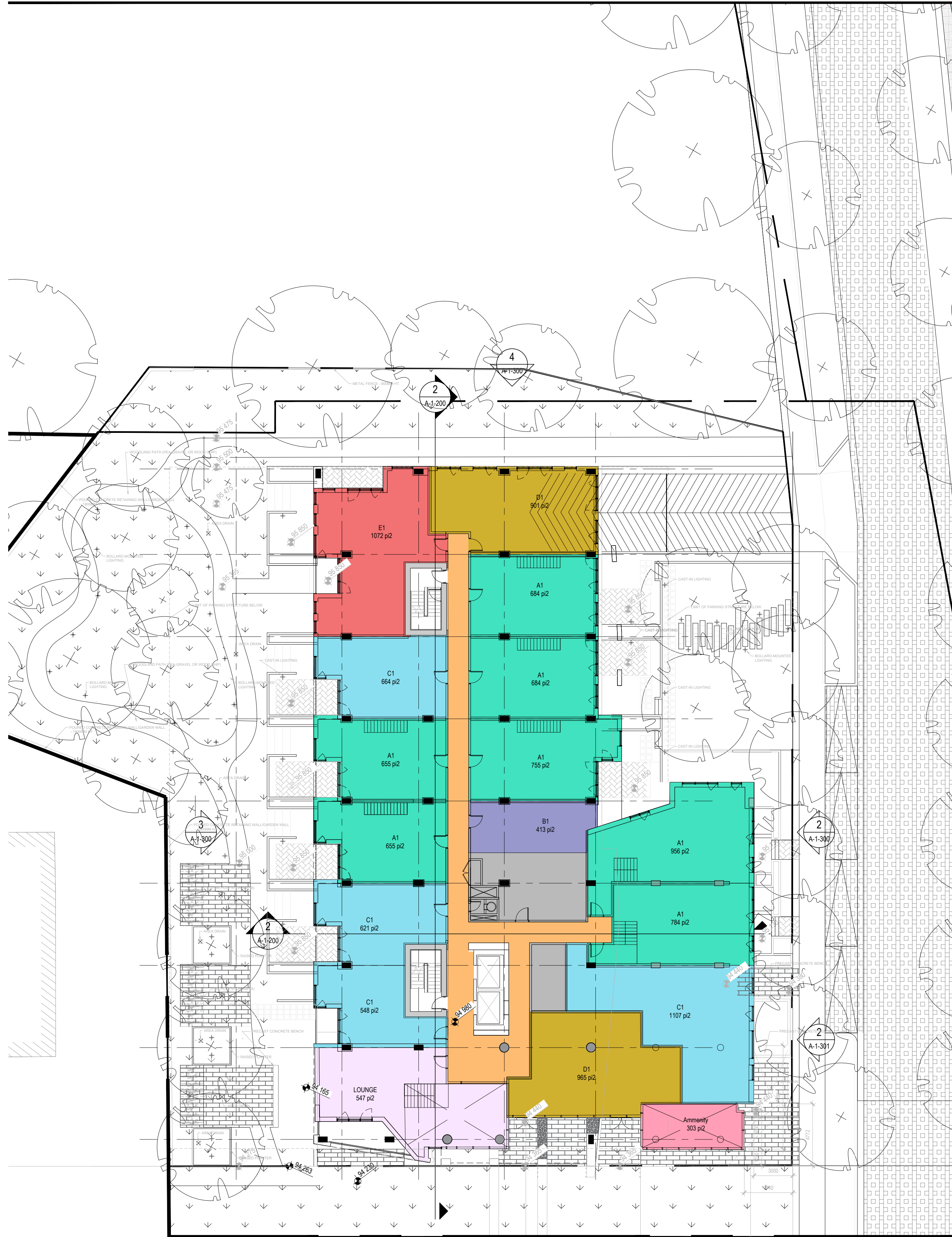
DRAWING TITLE:  
**MODEL VIEWS**

DESIGN:	NG	APPROVED:	XX
DRAWN:	-	DATE:	2022-10-30
VERIFIED:	XX	SCALE:	S.O.

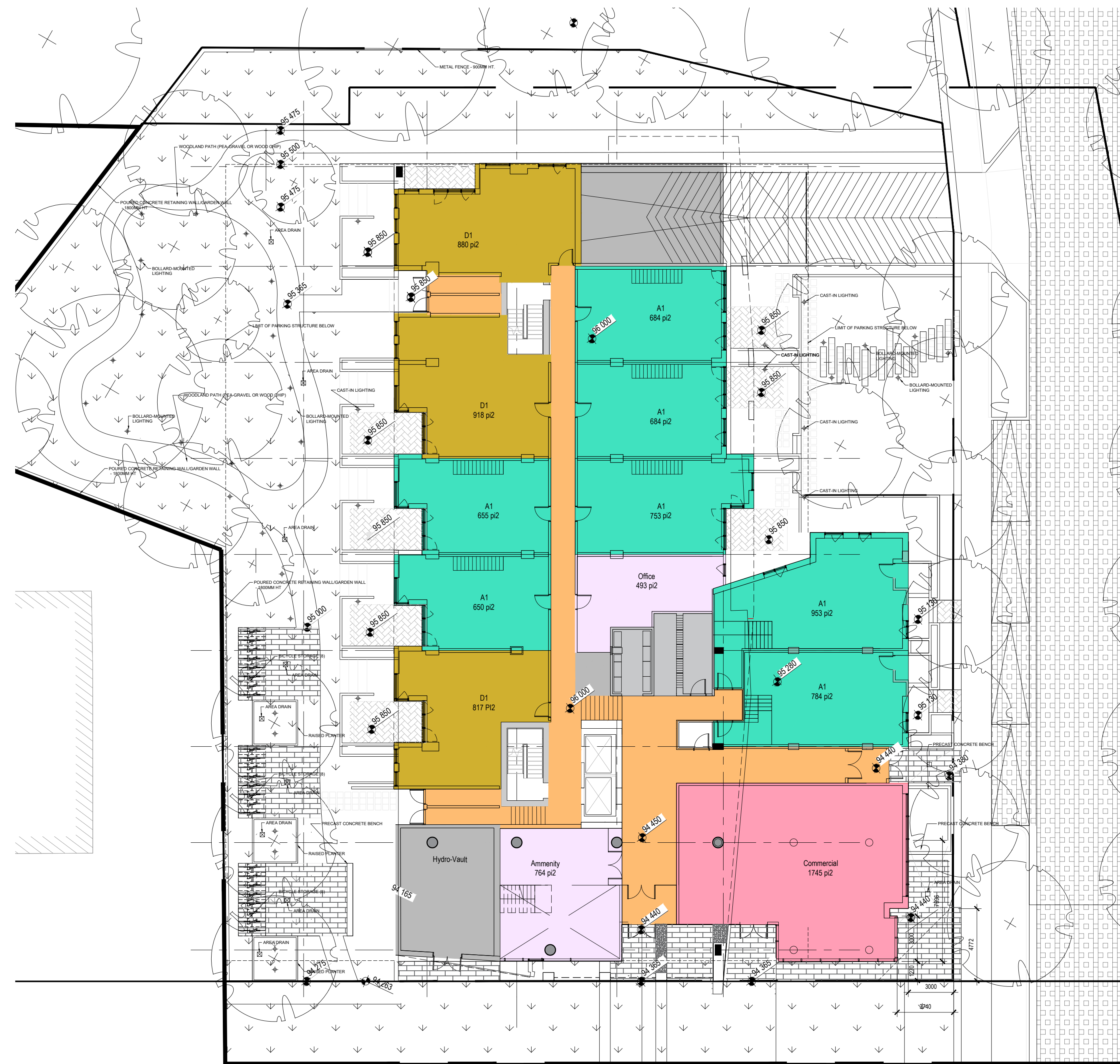
PROJECT NO: **9426-20** DRAWING NO: **A-1\_030**







SECOND FLOOR 2  
1:200 A-1, 101



GROUND FLOOR 1  
1:200 A-1, 101

LEGEND	
<span style="display:inline-block; width:15px; height:15px; background-color:orange;"></span>	CIRCULATION
<span style="display:inline-block; width:15px; height:15px; background-color:yellow;"></span>	COMMERCIAL
<span style="display:inline-block; width:15px; height:15px; background-color:lightblue;"></span>	VERTICAL CIRCULATION
<span style="display:inline-block; width:15px; height:15px; background-color:grey;"></span>	SERVICES
<span style="display:inline-block; width:15px; height:15px; background-color:purple;"></span>	AMENITY
<span style="display:inline-block; width:15px; height:15px; background-color:teal;"></span>	RESIDENTIAL - TOWN HOME
<span style="display:inline-block; width:15px; height:15px; background-color:blue;"></span>	RESIDENTIAL - STUDIO UNIT
<span style="display:inline-block; width:15px; height:15px; background-color:lightgreen;"></span>	RESIDENTIAL - 1 BEDROOM UNIT
<span style="display:inline-block; width:15px; height:15px; background-color:gold;"></span>	RESIDENTIAL - 2 BEDROOM UNIT
<span style="display:inline-block; width:15px; height:15px; background-color:red;"></span>	RESIDENTIAL - 3 BEDROOM UNIT

CLIENT: **CLARIDGE HOMES**  
 210 Gladstone Avenue  
 OTTAWA, ONTARIO K2P 0Y6  
 T: (613) 233-6030 F: (613) 233-6290

ARCHITECTS: **EVOOQ**  
 1435, RUE SAINT-ALEXANDRE, BUREAU 1000  
 MONTREAL (QUEBEC) H3A 2G4  
 T: 514-393-9490 F: 514-393-9498  
 info@evoqarchitecture.com

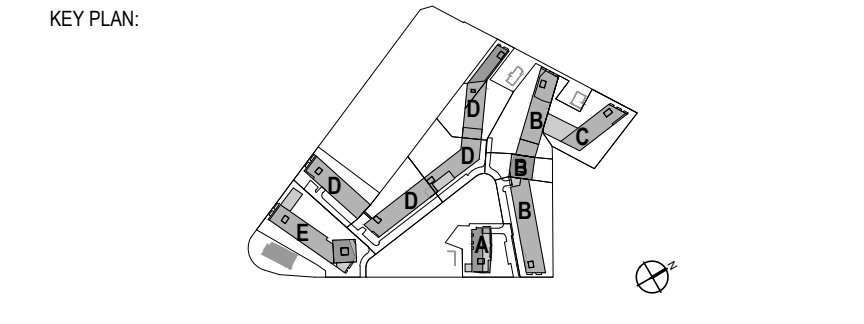
LANDSCAPE ARCHITECTS: **James B. Lennox and Associates Inc.**  
 Landscape Architects  
 3332 Carling Avenue,  
 Ottawa, Ontario, K2H 5A8, T: (613) 722 5168

STRUCTURAL ENGINEERS: **GOODEVE STRUCTURAL INC.**  
 177 Jarvis St. Suite 110, Toronto, ON M5R 1A7  
 Tel: 416-593-8888 www.goodevestructural.ca

CIVIL ENGINEERS: **NOVATECH ENGINEERING CONSULTANTS LTD.**  
 200, 240 Michael Cowpland Dr.  
 Ottawa, Ontario, Canada K2M 1R6  
 Telephone: (613) 254-9643  
 Facsimile: (613) 254-9887  
 E-mail: novatech@novatech-eng.com

URBAN DESIGN CONSULTANTS: **FOTENN Planning + Design**  
 Fontenn  
 396 Cooper St. Suite 300  
 Ottawa, ON K2P 2H7  
 Telephone: (613) 254-9643  
 E-mail: novatech@novatech-eng.com

TOPOGRAPHICAL SURVEYOR: **Annis O'Sullivan, Vollebek Ltd., Ontario Land Surveyors**  
 14 Concourse Gate, Suite 500  
 Nepean, Ontario, K2E 7S6  
 Tel: (613) 727-8850  
 email: repaan@annisd.com



NO.	DESCRIPTION	DATE
1	SITE PLAN CONTROL - PHASE 1 - REVISED 02	2023-10-12
2	SITE PLAN CONTROL - PHASE 1 - REVISED	2023-06-21
3	SITE PLAN CONTROL - PHASE 1	2022-12-01
4	SITE PLAN CONTROL	2021-09-17
5	ISSUED FOR COORDINATION	2021-05-27

REVISION:

THE GENERAL CONTRACTOR:

- SHALL BE RESPONSIBLE FOR VERIFYING ALL DIMENSIONS ON SITE TO ENSURE COMPLIANCE WITH THE DIMENSIONS GIVEN ON THE DRAWINGS.
- SHALL BE RESPONSIBLE TO IMMEDIATELY SUBMIT A REPORT TO THE ARCHITECT OR ENGINEER OUTLINING ANY INACCURACIES.
- SHALL NOT TAKE SCALED MEASUREMENTS OFF THE DRAWINGS.
- ANY INDIVIDUAL OR FIRM THAT HAVE RECEIVED ELECTRONIC DOCUMENT SHALL USE THEM AT THEIR OWN RISK. ONLY ORIGINAL DRAWINGS, STAMPED BY THE ARCHITECT, MAY BE USED FOR CONSTRUCTION.

SEAL: © 2018, EVOOQ Architecture Inc.  
 Intellectual property rights relating to this document belong exclusively to EVOOQ Architecture Inc. This document may not be forwarded to others, transmitted, downloaded, reproduced or adapted in any format, whether print or electronic, without the prior written authorization of EVOOQ Architecture Inc. All ideas and other information in this document are specific to this project and may not be used elsewhere without the written authorization of EVOOQ Architecture Inc.

PROJECT: **1500 MERIVALE**

DRAWING TITLE: **GROUND FLOOR & SECOND FLOOR MERIVALE**

DESIGN: NG APPROVED: XX  
 DRAWN: SJCH DATE: 2022-10-30  
 VERIFIED: XX SCALE: 1:200

PROJECT NO.: **9426-20** DRAWING NO.: **A-1\_101**



LEGEND	
	CIRCULATION
	COMMERCIAL
	VERTICAL CIRCULATION
	SERVICES
	AMENITY
	RESIDENTIAL - TOWN HOME
	RESIDENTIAL - STUDIO UNIT
	RESIDENTIAL - 1 BEDROOM UNIT
	RESIDENTIAL - 2 BEDROOM UNIT
	RESIDENTIAL - 3 BEDROOM UNIT



TYPICAL FLOOR PLAN 8-9  
1:200  
2  
A-1-102



TYPICAL FLOOR PLAN 3-4-5-6-7  
1:200  
1  
A-1-102

CLIENT: **CLARIDGE HOMES**  
210 Gladstone Avenue  
OTTAWA, ONTARIO K2P 0Y6  
T: (613) 233-6030 F: (613) 233-8290

ARCHITECTS: **EVOQ**  
1435, RUE SAINT-ALEXANDRE, BUREAU 1000  
MONTREAL (QUEBEC) H3A 2G4  
T: 514-393-9490 F: 514-393-9498  
info@evoqarchitecture.com

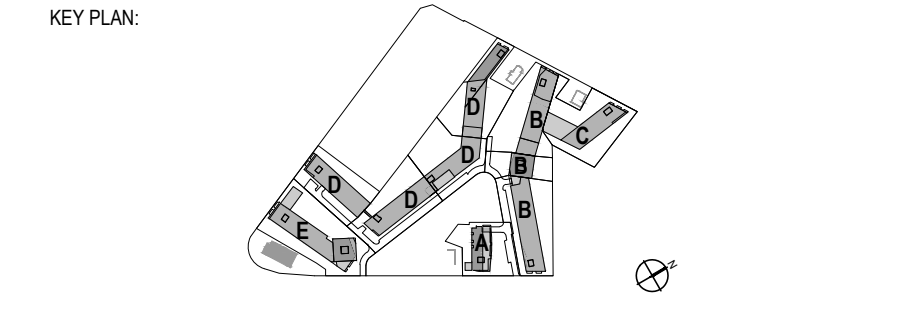
LANDSCAPE ARCHITECTS: **James B. Lennox and Associates Inc. Landscape Architects**  
3332 Carling Avenue,  
Ottawa, Ontario, K2H 5A8, T: (613) 722 5168

STRUCTURAL ENGINEERS: **GOODEVE STRUCTURAL INC.**  
77 Arnprior Dr., Suite 15, Ottawa, ON K2E 7Z7  
Tel: 613-235-9528 www.goodevestructural.ca

CIVIL ENGINEERS: **NOVATECH ENGINEERING CONSULTANTS LTD.**  
ENGINEERS & PLANNERS  
Suite 200, 240 Michael Cowpland Dr.  
Ottawa, Ontario, Canada K2M 1P6  
Telephone: (613) 254-6663  
Facsimile: (613) 254-5887  
E-mail: novatech@novatech-eng.com

URBAN DESIGN CONSULTANTS: **FOTENN Planning + Design**  
Fontenot  
396 Cooper St, Suite 300  
Ottawa, ON K2P 2H7  
www.fotenn.com

TOPOGRAPHICAL SURVEYOR: **Annis O'Sullivan, Vollebakk Ltd., Ontario Land Surveyors**  
14 Concourse Gate, Suite 500  
Nepean, Ontario, K2E 7S6  
Tel: (613) 727-6850  
email: nepean@osvrltd.com



NO.	DESCRIPTION	BY	DATE
1	SITE PLAN CONTROL - PHASE 1 - REVISED 02		2023-10-12
2	SITE PLAN CONTROL - PHASE 1 - REVISED		2023-06-21
3	SITE PLAN CONTROL - PHASE 1		2022-12-01
4	SITE PLAN CONTROL		2021-09-17
5	ISSUED FOR COORDINATION		2021-05-27

THE GENERAL CONTRACTOR :

- SHALL BE RESPONSIBLE FOR VERIFYING ALL DIMENSIONS ON SITE TO ENSURE COMPLIANCE WITH THE DIMENSIONS GIVEN ON THE DRAWINGS.
- SHALL BE RESPONSIBLE TO IMMEDIATELY SUBMIT A REPORT TO THE ARCHITECT OR ENGINEER OUTLINING ANY INACCURACIES.
- SHALL NOT TAKE SCALED MEASUREMENTS OFF THE DRAWINGS.
- ANY INDIVIDUAL OR FIRM THAT HAVE RECEIVED ELECTRONIC DOCUMENT SHALL USE THEM AT THEIR OWN RISK. ONLY ORIGINAL DRAWINGS, STAMPED BY THE ARCHITECT, MAY BE USED FOR CONSTRUCTION.

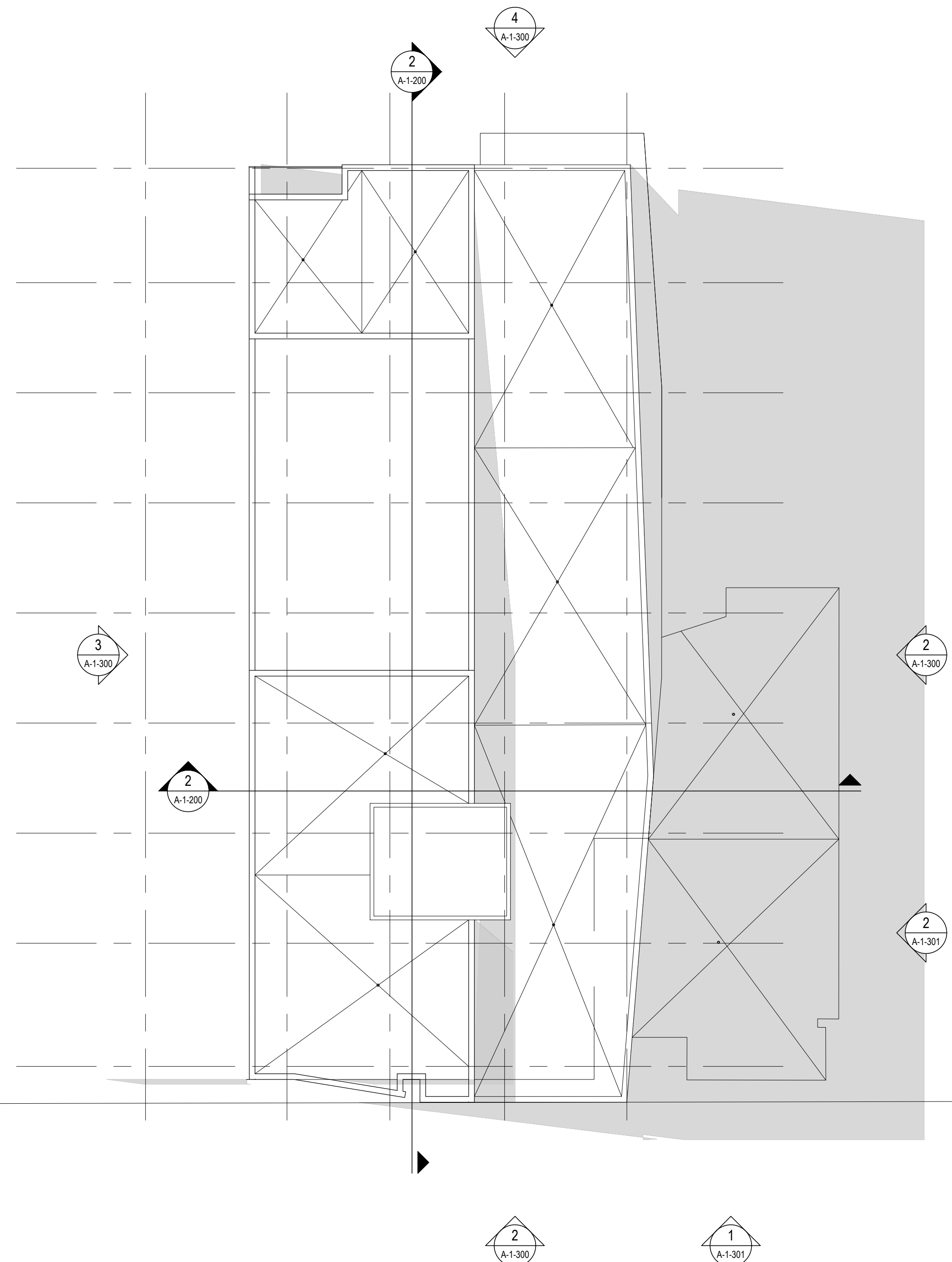
SEAL: © 2018, EVOQ Architecture inc.  
Intellectual property rights relating to this document belong exclusively to EVOQ Architecture inc. This document may not be forwarded to others, transmitted, downloaded, reproduced nor adapted in any format, whether print or electronic, without the prior written authorization of EVOQ Architecture inc. All ideas and other information in this document are specific to this project and may not be used elsewhere without the written authorization of EVOQ Architecture inc.

PROJECT: **1500 MERIVALE**

DRAWING TITLE: **TYPICAL FLOOR PLAN 3-4-5-6-7  
TYPICAL FLOOR PLAN 8-9  
MERIVALE**

DESIGN: NG APPROVED: XX  
DRAWN: SJCH DATE: 2022-10-30  
VERIFIED: XX SCALE: 1:200

PROJECT N°: **9426-20** DRAWING N°: **A-1-102**



ROOF PLAN 2  
1:200 A-1-103



10TH FLOOR PLAN 1  
1:200 A-1-103

**LEGEND**

- CIRCULATION
- COMMERCIAL
- VERTICAL CIRCULATION
- SERVICES
- AMENITY
- RESIDENTIAL - TOWN HOME
- RESIDENTIAL - STUDIO UNIT
- RESIDENTIAL - 1 BEDROOM UNIT
- RESIDENTIAL - 2 BEDROOM UNIT
- RESIDENTIAL - 3 BEDROOM UNIT

CLIENT: **CLARIDGE HOMES**  
 210 Gladstone Avenue  
 OTTAWA, ONTARIO K2P 0Y6  
 T: (613) 233-6030 F: (613) 233-8290

ARCHITECTS: **EVOQ**  
 1435, RUE SAINT-ALEXANDRE, BUREAU 1000  
 MONTRÉAL (QUÉBEC) H3A 2G4  
 T: 514-393-9400 F: 514-393-9498  
 info@evogarchitecture.com

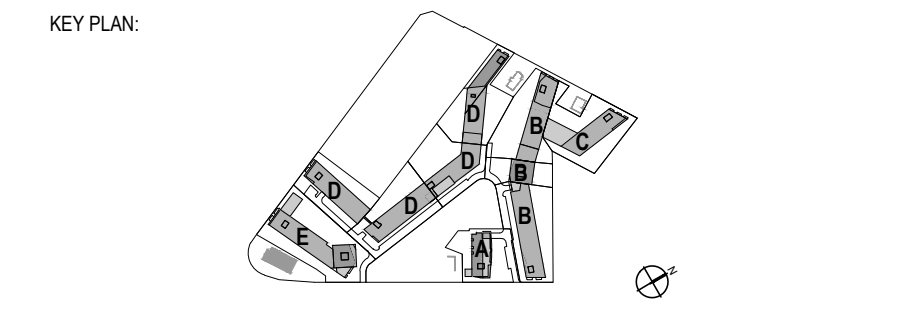
LANDSCAPE ARCHITECTS: **James B. Lennox and Associates Inc.**  
 Landscape Architects  
 3332 Carling Avenue,  
 Ottawa, Ontario, K2H 5A8, T: (613) 722 5168

STRUCTURAL ENGINEERS: **GOODEVE STRUCTURAL INC.**  
 177 Avenue de l'Inde - Ottawa ON K2E 2E1  
 Tel: 613-226-6558 www.goodevestructural.ca

CIVIL ENGINEERS: **NOVATECH ENGINEERING CONSULTANTS LTD.**  
 ENGINEERS & PLANNERS  
 Suite 200, 240 Michael Cowpland Dr.  
 Ottawa, Ontario, Canada K2M 1P6  
 Telephone: (613) 254-6643  
 Facsimile: (613) 254-6867  
 Email: novatech@novatechengg.com

URBAN DESIGN CONSULTANTS: **FOTENN Planning + Design**  
 Fontenn  
 396 Cooper St, Suite 300  
 Ottawa, ON K2P 2H7  
 www.fotenn.com

TOPOGRAPHICAL SURVEYOR: **Annis O'Sullivan, Vollebek Ltd., Ontario Land Surveyors**  
 14 Concourse Gate, Suite 500  
 Nepean, Ontario, K2E 7S6  
 Tel: (613) 727-0850  
 email: nepean@anniso.com



SITE PLAN CONTROL - PHASE 1 - REVISED 02	2023-10-12
SITE PLAN CONTROL - PHASE 1 - REVISED	2023-06-21
SITE PLAN CONTROL - PHASE 1	2022-12-01
SITE PLAN CONTROL	2021-09-17
ISSUED FOR COORDINATION	2021-05-27
Nº: DESCRIPTION	BY DATE

REVISION:

- THE GENERAL CONTRACTOR :
- SHALL BE RESPONSIBLE FOR VERIFYING ALL DIMENSIONS ON SITE TO ENSURE COMPLIANCE WITH THE DIMENSIONS GIVEN ON THE DRAWINGS.
  - SHALL BE RESPONSIBLE TO IMMEDIATELY SUBMIT A REPORT TO THE ARCHITECT OR ENGINEER OUTLINING ANY INACCURACIES.
  - SHALL NOT TAKE SCALED MEASUREMENTS OFF THE DRAWINGS.
  - ANY INDIVIDUAL OR FIRM THAT HAVE RECEIVED ELECTRONIC DOCUMENT SHALL USE THEM AT THEIR OWN RISK, ONLY ORIGINAL DRAWINGS, STAMPED BY THE ARCHITECT, MAY BE USED FOR CONSTRUCTION.

SEAL

© 2018, EVOQ Architecture inc.

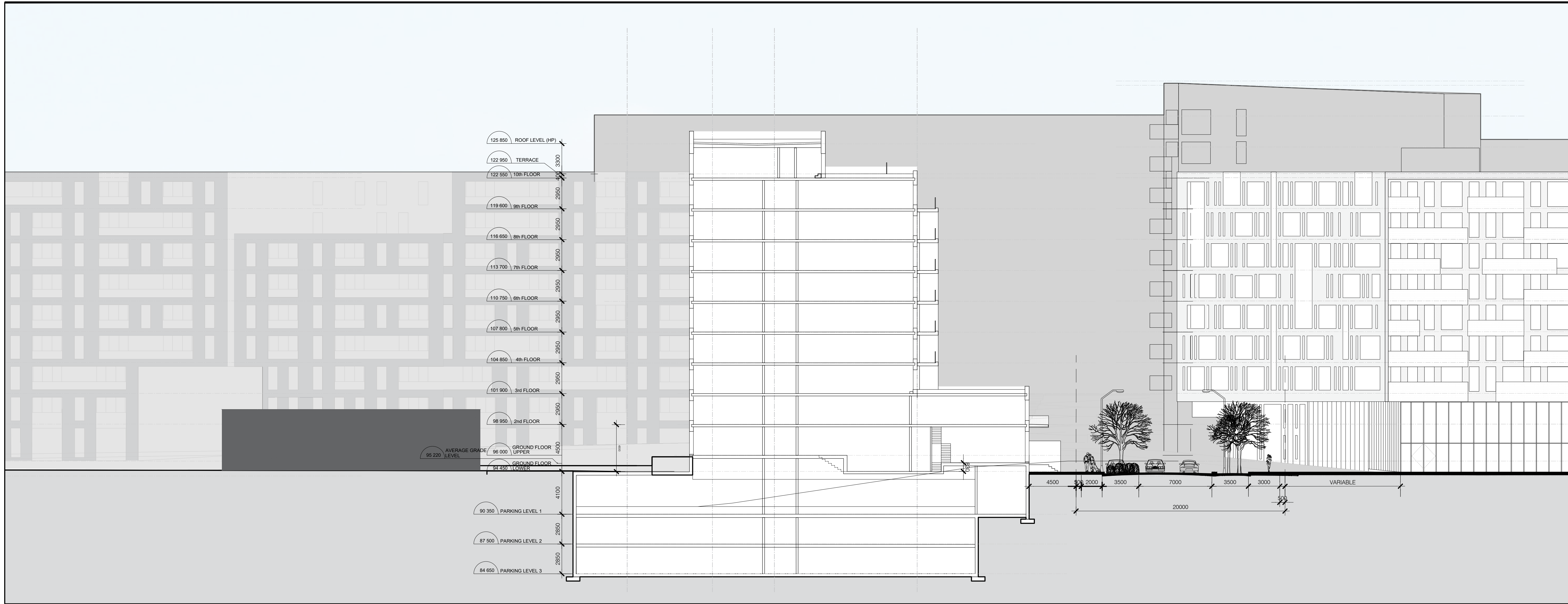
Intellectual property rights relating to this document belong exclusively to EVOQ Architecture inc. This document may not be forwarded to others, transmitted, downloaded, reproduced nor adapted in any format, whether print or electronic, without the prior written authorization of EVOQ Architecture inc. All ideas and other information in this document are specific to this project and may not be used elsewhere without the written authorization of EVOQ Architecture inc.

PROJECT: **1500 MERIVALE**

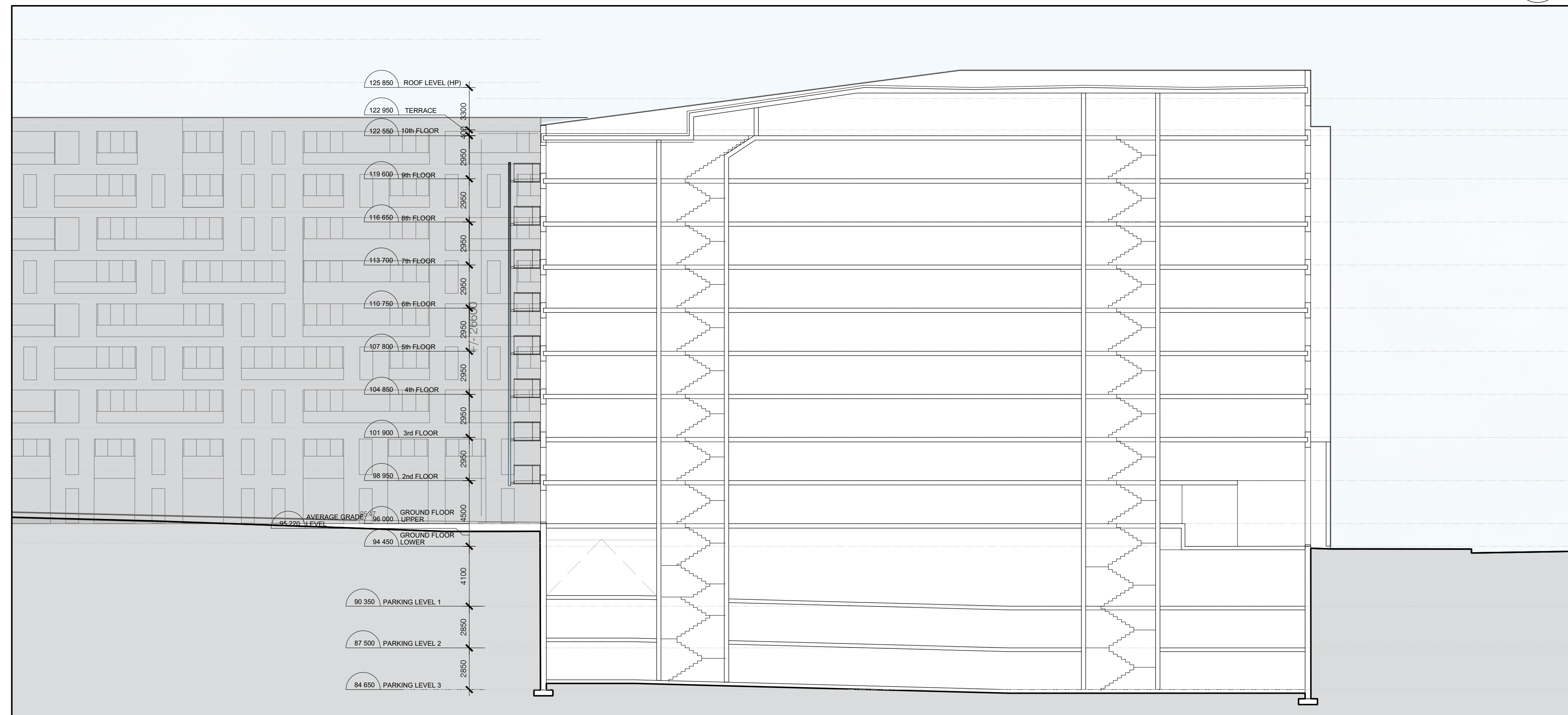
DRAWING TITLE: **10TH FLOOR PLAN  
ROOF PLAN  
MERIVALE**

DESIGN: NG	APPROVED: XX
DRAWN: SJCH	DATE: 2022-10-30
VERIFIED: XX	SCALE: 1:200

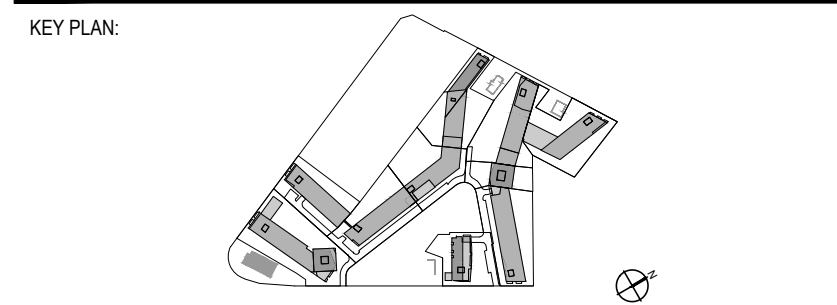
PROJECT Nº: **9426-20** DRAWING Nº: **A-1-103**



CROSS SECTION TRANSVERSE 2  
1:200 A200



CROSS SECTION LONGITUDINAL 1  
1:200 A200



NO.	DESCRIPTION	BY	DATE
	SITE PLAN CONTROL - PHASE 1 - REVISED 02		2023-10-12
	SITE PLAN CONTROL - PHASE 1 - REVISED		2023-06-21
	SITE PLAN CONTROL - PHASE 1		2022-12-01
	SITE PLAN CONTROL		2021-09-17
	ISSUED FOR COORDINATION		2021-05-27
N°:	DESCRIPTION:	BY	DATE

REVISION:

- THE GENERAL CONTRACTOR :
- SHALL BE RESPONSIBLE FOR VERIFYING ALL DIMENSIONS ON SITE TO ENSURE COMPLIANCE WITH THE DIMENSIONS GIVEN ON THE DRAWINGS.
  - SHALL BE RESPONSIBLE TO IMMEDIATELY SUBMIT A REPORT TO THE ARCHITECT OR ENGINEER OUTLINING ANY INACCURACIES.
  - SHALL NOT TAKE SCALED MEASUREMENTS OFF THE DRAWINGS.
  - ANY INDIVIDUAL OR FIRM THAT HAVE RECEIVED ELECTRONIC DOCUMENT SHALL USE THEM AT THEIR OWN RISK. ONLY ORIGINAL DRAWINGS, STAMPED BY THE ARCHITECT, MAY BE USED FOR CONSTRUCTION.

SEAL

© 2018, EVOQ Architecture inc.

Intellectual property rights relating to this document being exclusively to EVOQ Architecture inc. This document may not be forwarded to others, transmitted, downloaded, reproduced nor adapted in any format, whether print or electronic, without the prior written authorization of EVOQ Architecture inc. All ideas and other information in this document are specific to this project and may not be used elsewhere without the written authorization of EVOQ Architecture inc.

PROJECT:  
**1500 MERIVALE**

DRAWING TITLE:  
**SECTIONS**

DESIGN:	NG	APPROVED:	XX
DRAWN:	MF	DATE:	2022-10-30
VERIFIED:	XX	SCALE:	1:200
PROJECT N°:	9426-20	DRAWING N°:	A-1_200



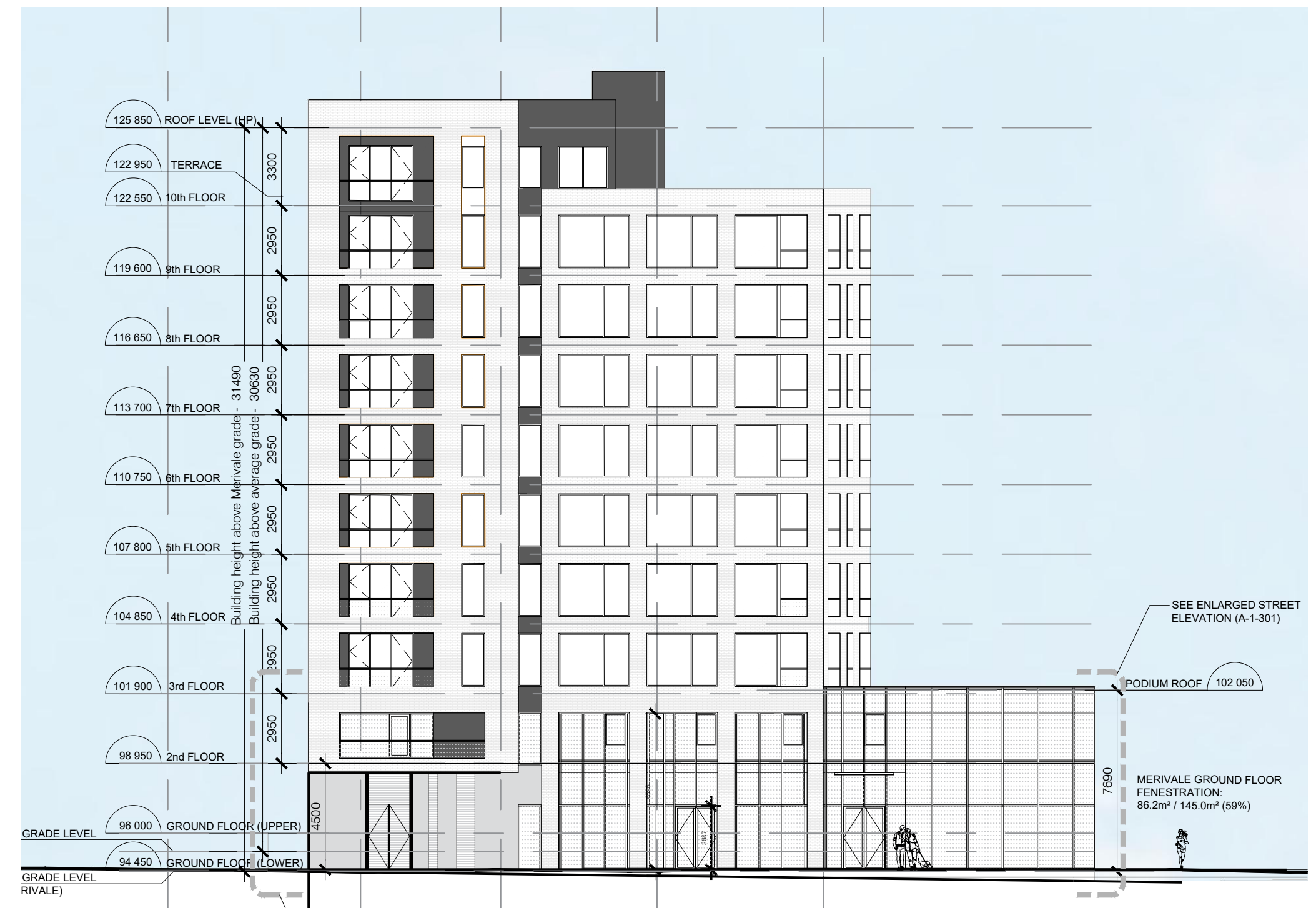
ELEVATION SOUTH - PARK PHASE 1  
1:200 A300



ELEVATION WEST PHASE 1  
1:200 A300

**LEGEND**

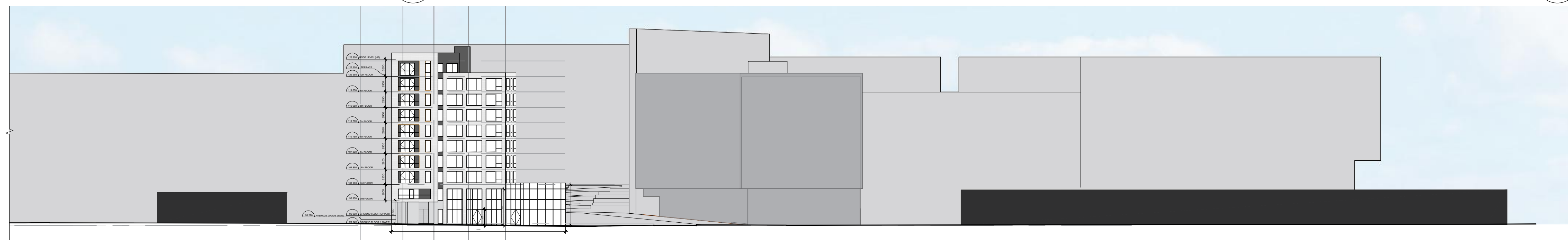
- TEXTURED PRECAST CONCRETE PANEL
- BRICK MASONRY DARK
- GLASS (BRD SAFE GLASS UP TO 16M HEIGHT)
- METAL PANEL
- PERFORATED METAL SCREEN



ELEVATION SOUTH - MERIVALE ROAD PHASE 1  
1:200 A300



ELEVATION EAST - NEW PUBLIC ROAD PHASE 1  
1:200 A300



STRIP ELEVATION - MERIVALE PHASE 1  
1:500 A300

CLIENT: **CLARIDGE HOMES**  
210 Gladstone Avenue  
OTTAWA, ONTARIO K2P 0Y6  
T: (613) 233-6050 F: (613) 233-8290

ARCHITECTS: **EVOQ**  
1435, RUE SAINT-ALEXANDRE, BUREAU 1000  
MONTRÉAL (QUÉBEC) H3A 2G4  
T: 514-393-9490 F: 514-393-9498  
info@evoqarchitecture.com

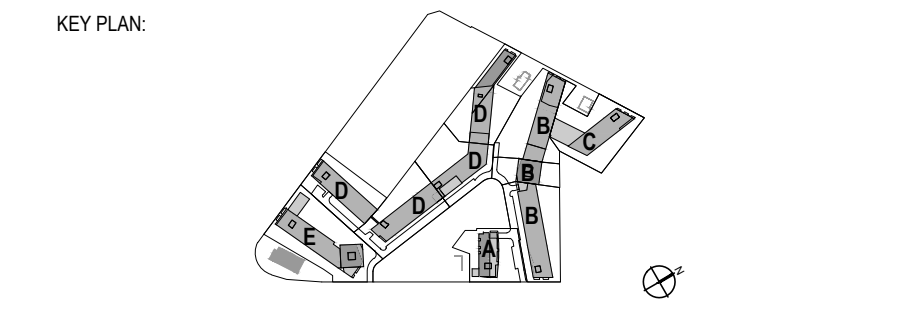
LANDSCAPE ARCHITECTS:  
**James B. Lennox and Associates Inc.**  
Landscape Architects  
3332 Carling Avenue,  
Ottawa, Ontario, K2H 5A8, T: (613) 722 5158

STRUCTURAL ENGINEERS:  
**GOODEVE STRUCTURAL INC.**  
77 Appleton - 14th Floor, Ottawa, ON  
Tel: 613-228-0558 www.goodevestructural.ca

CIVIL ENGINEERS: **NOVATECH ENGINEERING CONSULTANTS LTD.**  
ENGINEERS & PLANNERS  
Suite 200, 240 Michael Cowpland Dr.  
Ottawa, Ontario, Canada K2M 1R6  
Telephone: (613) 254-9643  
Facsimile: (613) 254-9687  
E-mail: novainfo@novatech.com

URBAN DESIGN CONSULTANTS: **FOTENN Planning + Design**  
Fotenn  
396 Cooper St. Suite 300  
Ottawa, ON K2P 2H7  
www.fotenn.com

TOPOGRAPHICAL SURVEYOR:  
**Annis O'Sullivan, Vollebakk Ltd.,**  
Ontario Land Surveyors  
14 Concourse Gate, Suite 500  
Nepean, Ontario, K2E 7S6  
Tel: (613) 727-0850  
email: nepean@ovltd.com



REVISION:	DESCRIPTION:	DATE:
SITE PLAN CONTROL - PHASE 1 - REVISED 02		2023-10-12
SITE PLAN CONTROL - PHASE 1 - REVISED		2023-06-21
SITE PLAN CONTROL - PHASE 1		2022-12-01
SITE PLAN CONTROL		2021-09-17
ISSUED FOR COORDINATION		2021-05-27
N°:	DESCRIPTION:	BY DATE

**THE GENERAL CONTRACTOR :**

- SHALL BE RESPONSIBLE FOR VERIFYING ALL DIMENSIONS ON SITE TO ENSURE COMPLIANCE WITH THE DIMENSIONS GIVEN ON THE DRAWINGS.
- SHALL BE RESPONSIBLE TO IMMEDIATELY SUBMIT A REPORT TO THE ARCHITECT OR ENGINEER OUTLINING ANY INACCURACIES.
- SHALL NOT TAKE SCALED MEASUREMENTS OFF THE DRAWINGS.
- ANY INDIVIDUAL OR FIRM THAT HAVE RECEIVED ELECTRONIC DOCUMENT SHALL USE THEM AT THEIR OWN RISK. ONLY ORIGINAL DRAWINGS, STAMPED BY THE ARCHITECT, MAY BE USED FOR CONSTRUCTION.

SEAL © 2018, EVOQ Architecture Inc.  
Intellectual property rights relating to this document belong exclusively to EVOQ Architecture Inc. This document may not be forwarded to others, transmitted, downloaded, reproduced nor adapted in any format, whether print or electronic, without the prior written authorization of EVOQ Architecture Inc. All ideas and other information in this document are specific to this project and may not be used elsewhere without the written authorization of EVOQ Architecture Inc.

PROJECT: **1500 MERIVALE**

DRAWING TITLE: **ELEVATIONS**

DESIGN:	NG	APPROVED:	XX
DRAWN:	SJ/CH	DATE:	2021-10-30
VERIFIED:	XX	SCALE:	1:200

PROJECT N°: **9426-20** DRAWING N°: **A-1-300**

