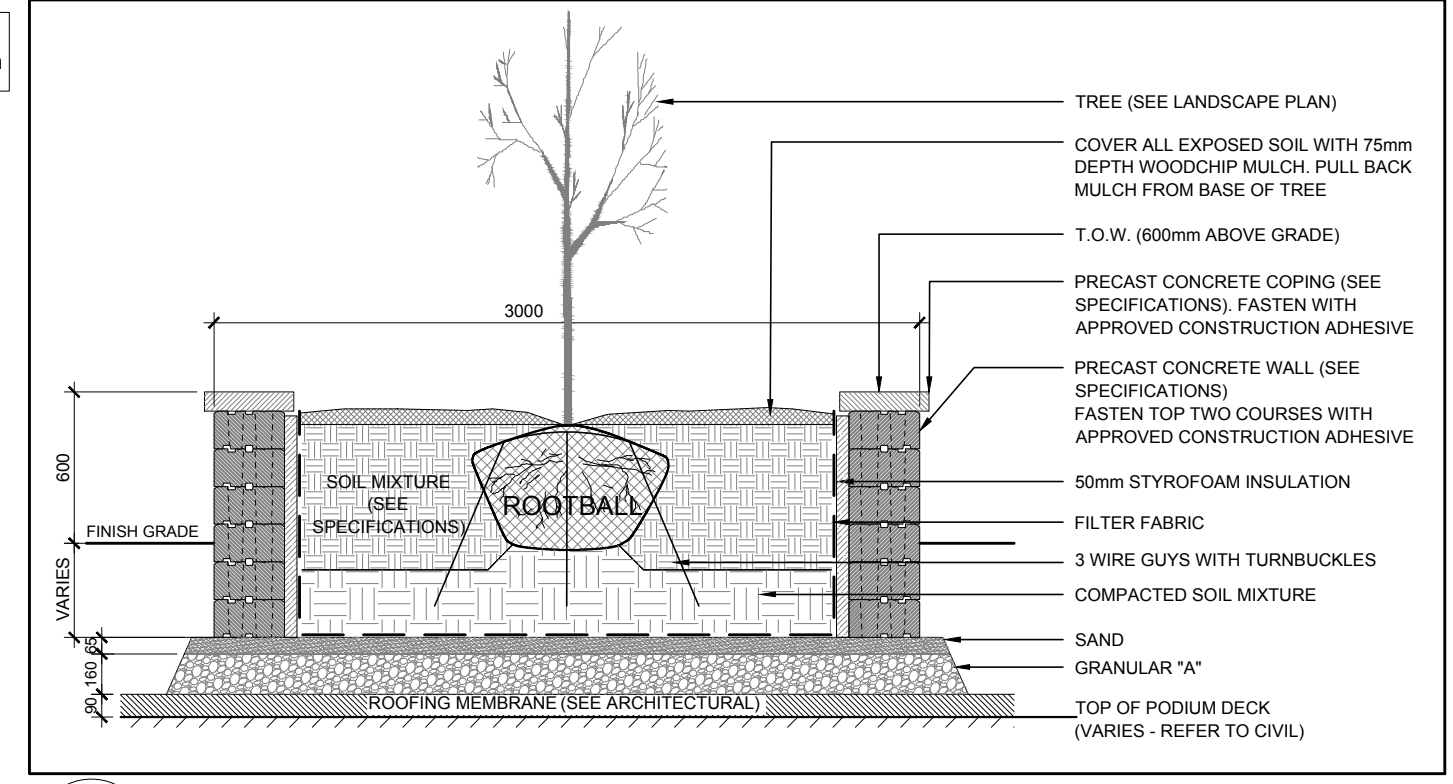


- ### LEGEND
- UNIT PAVERS TYPE 1
  - UNIT PAVERS TYPE 2
  - UNIT PAVERS TYPE 3/ STEPPING STONES
  - PROPOSED RIVERSTONE
  - EXISTING CONCRETE SIDEWALK
  - CONCRETE (REFER TO CIVIL)
  - PROPOSED SOD
  - PROPOSED WOOD CHIP/ PEA GRAVEL PATH
  - C.I.P. CONCRETE RETAINING/ PLANTER WALL
  - PROPERTY LINE
  - PROPOSED 0.9m HT. ORNAMENTAL METAL FENCE
  - PROPOSED DECIDUOUS TREE
  - FUTURE PHASE TREE
  - PROPOSED SHRUBS/ PERENNIALS
  - BOLLARD LIGHT
  - AREA DRAIN
  - BENCH
  - STREET LIGHTING @ 50M O.C. REFER TO CIVIL

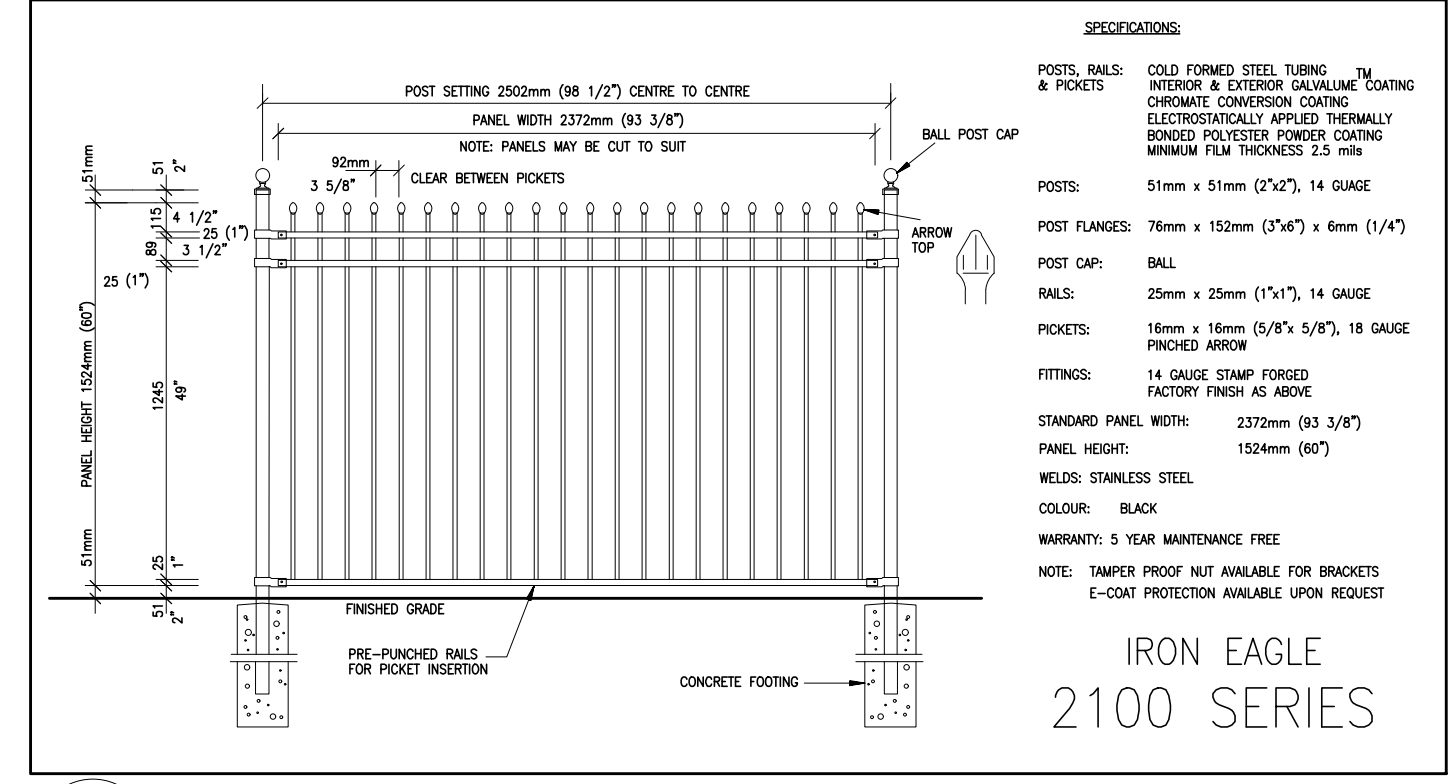
**1 LANDSCAPE PLAN**  
SCALE 1:200

- ### GENERAL NOTES:
1. It is the responsibility of the appropriate contractor or official to report any errors, omissions or discrepancies on this plan with actual site conditions to the Landscape Architect before proceeding with construction.
  2. The contractor is to notify all utility companies and authorities prior to any excavation and ascertain locations of underground services.
  3. The contractor is to reinstate all areas and items damaged as a result of construction activity.
  4. The contractor is to comply with all pertinent codes and by-laws.
  5. The contractor is to maintain a positive surface run-off throughout the entire construction period.
  6. The Landscape Architect is not responsible for subsurface conditions.
  7. The contractor is to identify all existing trees to remain on site with the Landscape Architect prior to construction.
  8. The contractor is to stake the proposed location of all plant material in conjunction with the Landscape Architect prior to excavation.

9. Minimum distances for selected deciduous trees are as follows:
  - Building Foundations 7.5m
  - Sidewalks 1.5m
  - Public Streets 2.5m
  - Underground Infrastructure 2.0m
10. All trees within 1m of underground utility trenches are to be excavated by hand.
11. Remove all protective wrapping from tree trunks after installation.
12. Staking of trees shall only be performed if necessary.
13. Ensure that mulch is pulled back a min. distance of 75mm from base of tree trunk.



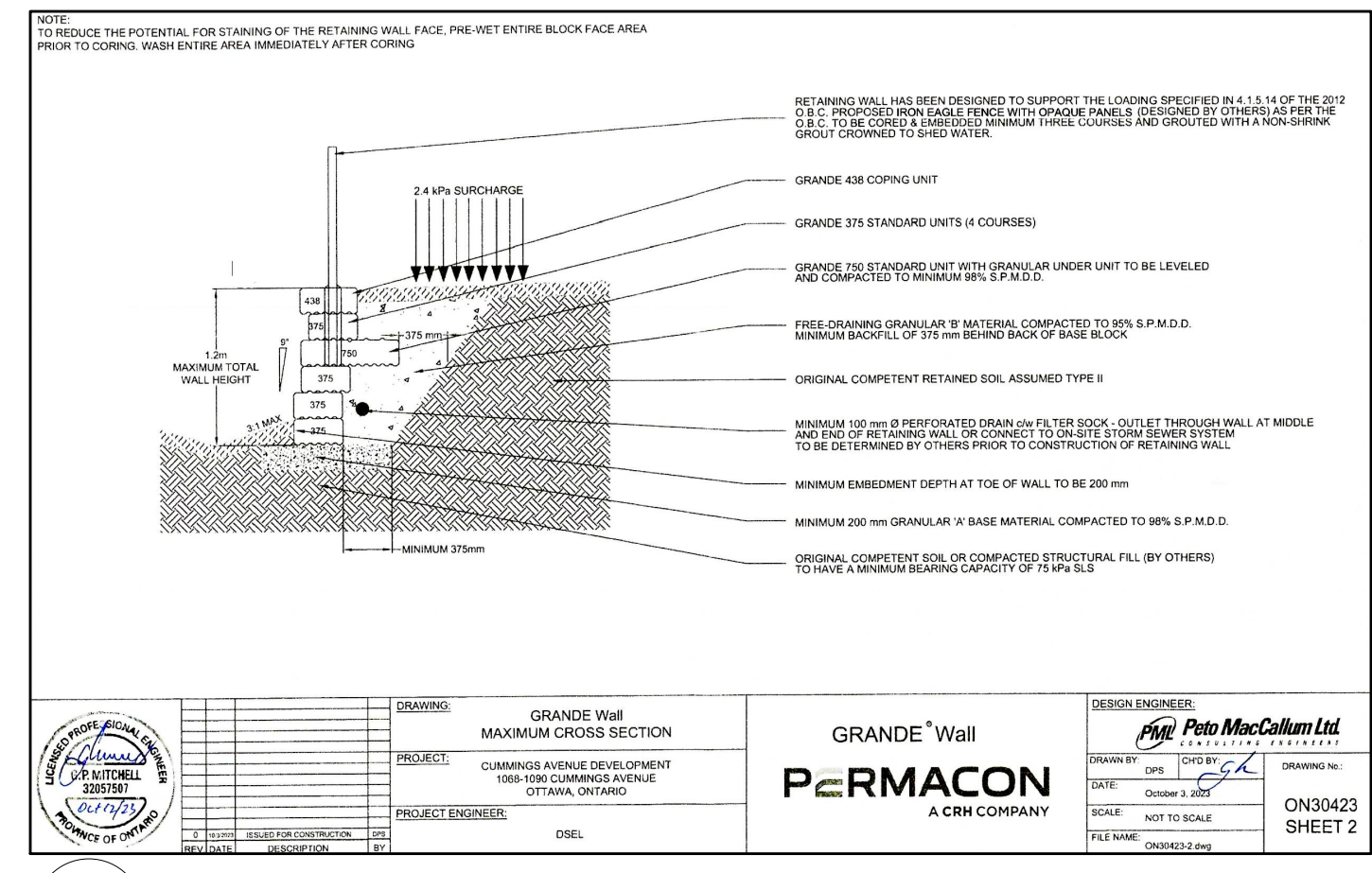
**2 TREE PLANTER ABOVE ROOF DECK**  
N.T.S.



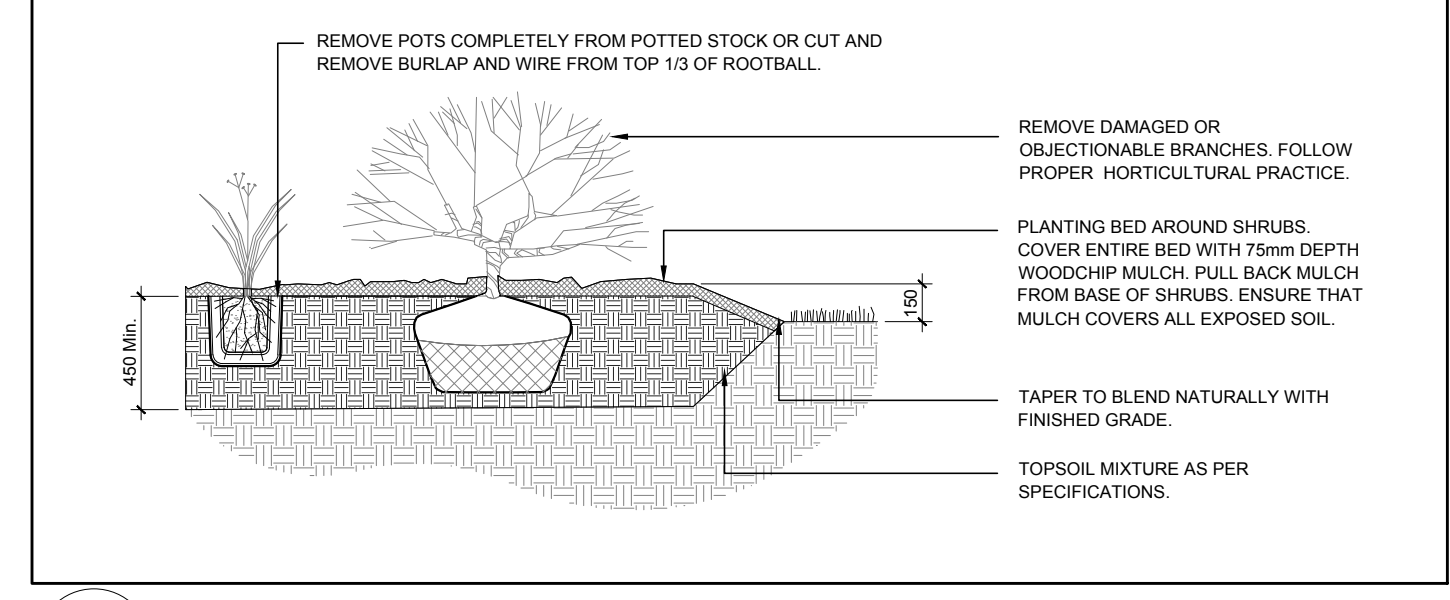
**3 1.5m Ht. ORNAMENTAL METAL FENCE**  
N.T.S.

### PROPOSED PLANT LIST

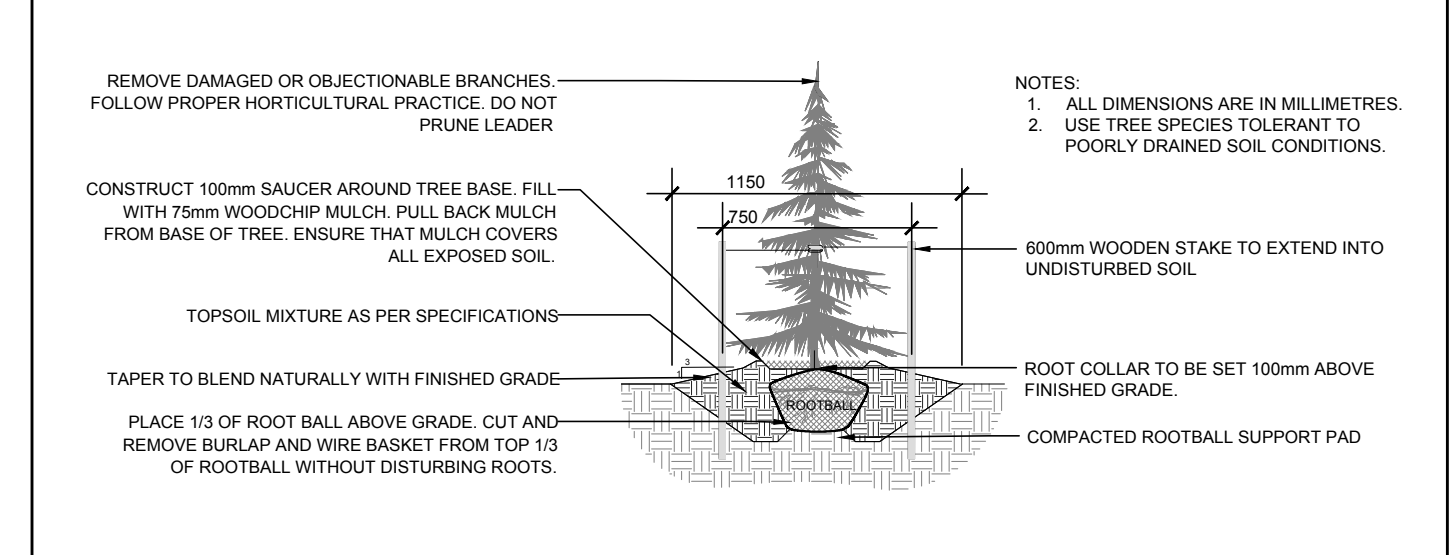
KEY	QTY	BOTANICAL NAME	COMMON NAME	SIZE	CONDITION	REMARKS	ORIGIN
<b>TREES</b>							
AF	1	Acer freemanii	Freeman's Maple	60mm cal.	B&B		Native
AG	3	Acer ginnala	Amur Maple	60mm cal.	B&B		Non-native
AR	3	Acer rubrum	Red Maple	60mm cal.	B&B		Native
AS	4	Acer saccharum	Sugar Maple	60mm cal.	B&B		Native
CO	1	Castilleja occidentalis	Hackberry	60mm cal.	B&B		Native
GB	2	Ginkgo biloba	Ginkgo	60mm cal.	B&B		Non-native
GD	8	Gleditsia triacanthos var. inermis 'Draves'	Street Keeper Honeylocust	60mm cal.	B&B		Native
GT	2	Gleditsia triacanthos	Honey Locust	60mm cal.	B&B		Native
MA	1	Malus sp.	Crabapple	60mm cal.	B&B		Native
QR	4	Quercus rubra	Red Oak	60mm cal.	B&B		Native
SR	4	Syringa reticulata	Japanese Tree Lilac	60mm cal.	B&B		Non-native
SB	3	Amelanchier canadensis	Canadian Serviceberry	60mm cal.	B&B		Native
<b>SHRUBS</b>							
Ha	27	Hydrangea arborescens 'Annabelle'	Annabelle Hydrangea	3 gal. pot	Potted	800 mm o.c.	Native
Ra	27	Rhus aromatica 'Grow-Low'	Grow-Low Fragrant Sumac	600mm ht.	Potted	800 mm o.c.	Native
So	8	Symphoricarpos orbiculatus	Coralberry	600mm ht.	Potted	800 mm o.c.	Native
Sa	8	Symphoricarpos albus	Snowberry	600mm ht.	Potted	800 mm o.c.	Native
<b>PERENNIALS</b>							
la	16	Leymus arenarius	Blue Lyme Grass	1 gal pot	Potted	300 mm o.c.	Non-native



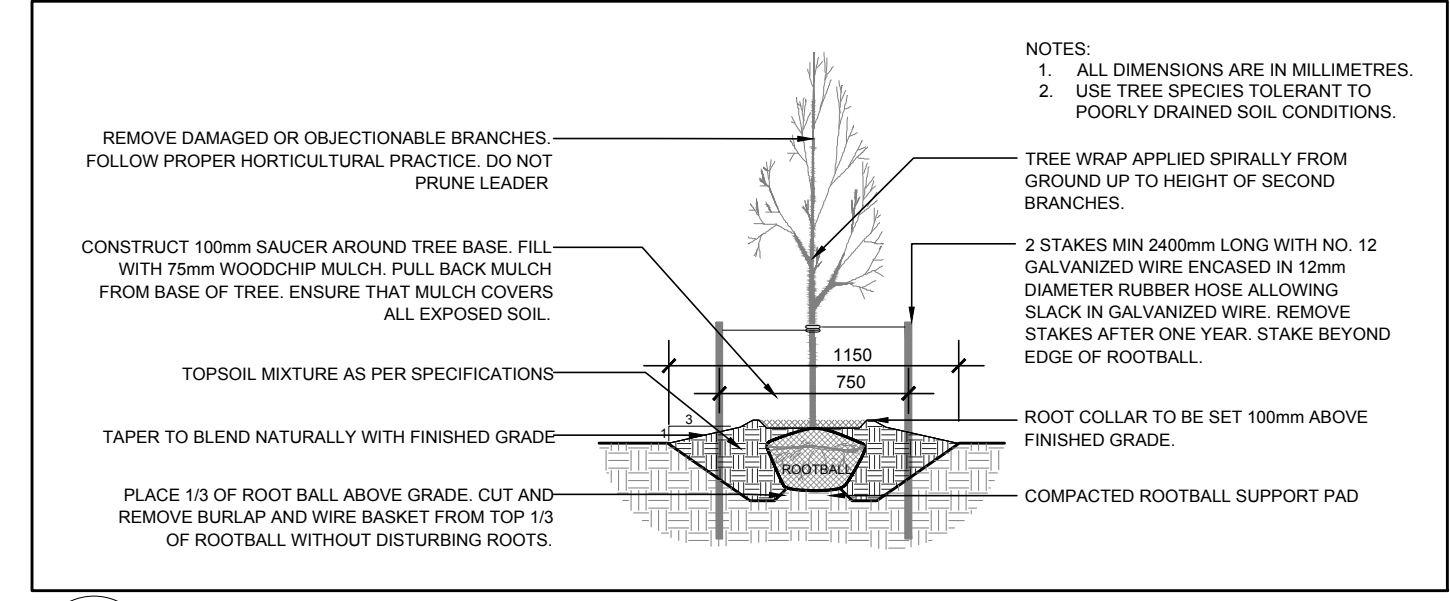
**7 RETAINING WALL WITH FENCE ON TOP**  
N.T.S.



**6 SHRUB AND PERENNIAL PLANTING**  
N.T.S.



**5 CONIFEROUS TREE PLANTING**  
N.T.S.



**4 DECIDUOUS TREE PLANTING**  
N.T.S.

CLIENT: **CLARIDGE HOMES**  
210 Gladstone Avenue  
OTTAWA, ONTARIO K2P 1Y6  
T: (613) 233-6000 F: (613) 233-8290

ARCHITECTS: **EVOO**  
1435, RUE SAINT-ALEXANDRE,  
BUREAU 1000  
MONTREAL, (QUEBEC) H3A 2D4  
T: 514-393-9490 F: 514-393-9498  
info@evooarchitecture.com

LANDSCAPE ARCHITECTS: **JAMES B. LENNOX & ASSOCIATES INC. LANDSCAPE ARCHITECTS**  
3332 CARLING AVE. OTTAWA, ONTARIO K2H 5A8  
Tel: (613) 722-5168 Fax: 1(866) 343-3942

STRUCTURAL ENGINEERS: **GOODEVE STRUCTURAL INC.**  
17 Av. Du... Suite 18... Ottawa ON K2E 7Z7  
Tel: 613-258-0580

CIVIL ENGINEERS: **NOVATECH ENGINEERING CONSULTANTS LTD.**  
396 Cooper St. Suite 300  
Ottawa, Ontario, Canada K2M 1P6  
Tel: (613) 254-9643  
Facsimile: (613) 254-9887  
Email: novatech@novatech-eng.com

TOPOGRAPHICAL SURVEYOR: **Annis O'Sullivan, Vollebakk Ltd., Ontario Land Surveyors**  
14 Concourse Gate, Suite 500  
Nepean, Ontario, K2E 7S6  
Tel: (613) 727-0850  
email: nepean@ovltd.com

KEY PLAN:

No.	DESCRIPTION	BY	DATE
9	ISSUED FOR COORDINATION	WF	09/10/2024
8	ISSUED FOR COORDINATION	WF	08/12/2024
7	ISSUED FOR COORDINATION	WF	07/25/2024
6	ISSUED FOR CITY OF OTTAWA 2ND SUBMISSION	WF	04/03/2024

- ### THE GENERAL CONTRACTOR:
1. SHALL BE RESPONSIBLE FOR VERIFYING ALL DIMENSIONS ON SITE TO ENSURE COMPLIANCE WITH THE DIMENSIONS GIVEN ON THE DRAWINGS.
  2. SHALL BE RESPONSIBLE TO IMMEDIATELY SUBMIT A REPORT TO THE ARCHITECT OR ENGINEER OUTLINING ANY INACCURACIES.
  3. SHALL NOT TAKE SCALED MEASUREMENTS OFF THE DRAWINGS.
  4. ANY INDIVIDUAL OR FIRM THAT HAVE RECEIVED ELECTRONIC DOCUMENT SHALL USE THEM AT THEIR OWN RISK. ONLY ORIGINAL DRAWINGS, STAMPED BY THE ARCHITECT, MAY BE USED FOR CONSTRUCTION.

SEAL:

PROJECT: **1500 MERIVALE**

DRAWING TITLE: **LANDSCAPE PLAN - PHASE 1**

DESIGN: JL	APPROVED: JL
DRAWN: SL	DATE: NOV 2022
VERIFIED: JL	SCALE: AS NOTED

PROJECT NO: **21CLG2145** DRAWING NO: **L.2**

File D07-12-21-0152 and plan #18612