

LEGEND

- UNIT PAVERS TYPE 1
- UNIT PAVERS TYPE 2
- UNIT PAVERS TYPE 3/ STEPPING STONES
- PROPOSED RIVERSTONE
- EXISTING CONCRETE SIDEWALK
- CONCRETE (REFER TO CIVIL)
- PROPOSED SOD
- PROPOSED WOOD CHIP/ PEA GRAVEL PATH
- C.I.P. CONCRETE RETAINING/ PLANTER WALL
- PROPERTY LINE
- PROPOSED 0.9m HT. ORNAMENTAL METAL FENCE
- PROPOSED DECIDUOUS TREE
- FUTURE PHASE TREE
- PROPOSED SHRUBS/ PERENNIALS
- BOLLARD LIGHT
- AREA DRAIN
- BENCH
- STREET LIGHTING @ 50M O.C. REFER TO CIVIL

1 LANDSCAPE PLAN SCALE 1:200

GENERAL NOTES:

- It is the responsibility of the appropriate contractor or official to report any errors, omissions or discrepancies on this plan with actual site conditions to the Landscape Architect before proceeding with construction.
- The contractor is to notify all utility companies and authorities prior to any excavation and ascertain locations of underground services.
- The contractor is to reinstate all areas and items damaged as a result of construction activity.
- The contractor is to comply with all pertinent codes and by-laws.
- The contractor is to maintain a positive surface run-off throughout the entire construction period.
- The Landscape Architect is not responsible for subsurface conditions.
- The contractor is to identify all existing trees to remain on site with the Landscape Architect prior to construction.
- The contractor is to stake the proposed location of all plant material in conjunction with the Landscape Architect prior to excavation.

9. Minimum distances for selected deciduous trees are as follows:

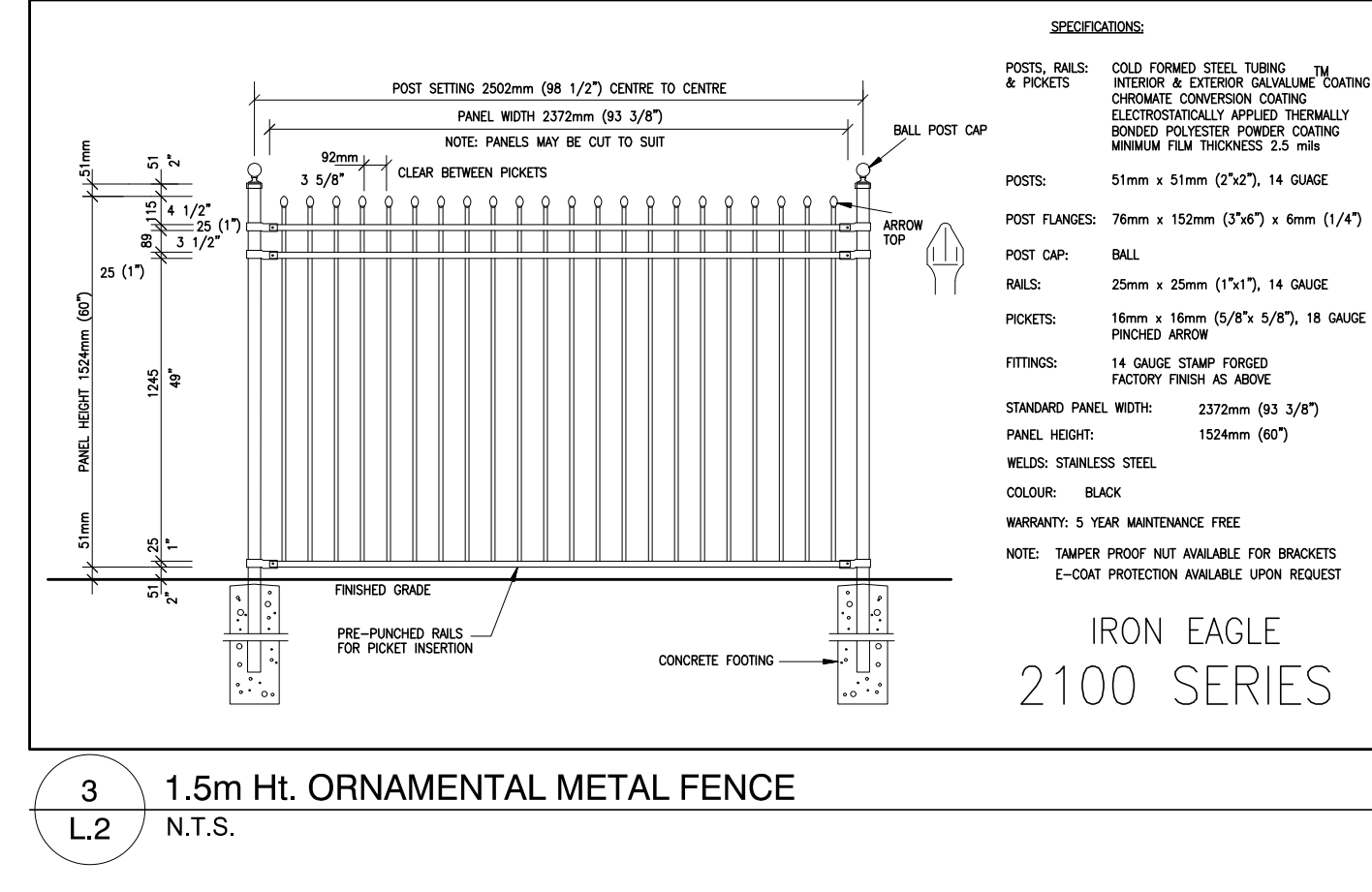
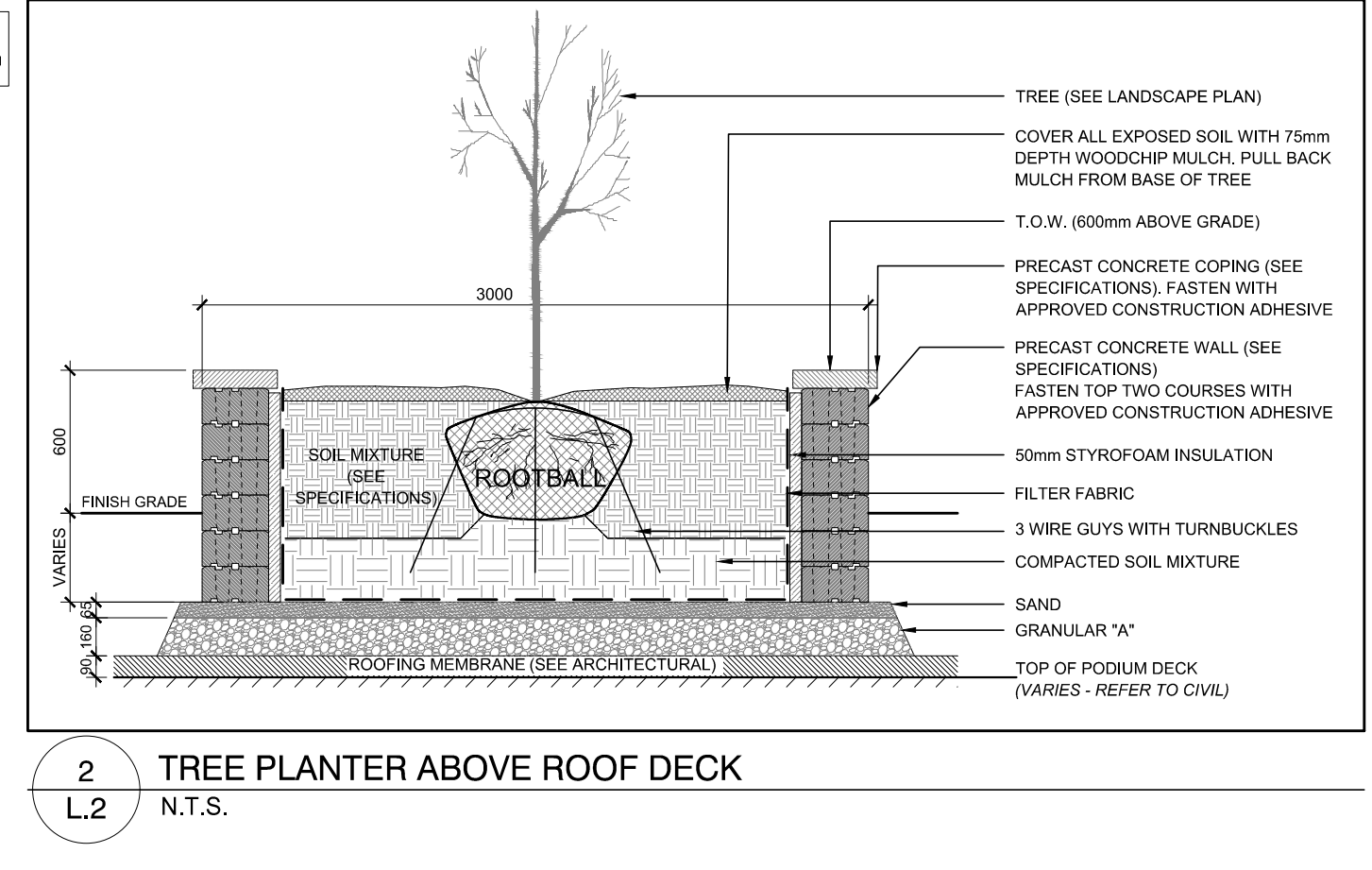
- Building Foundations 7.5m
- Sidewalks 1.5m
- Public Streets 2.5m
- Underground Infrastructure 2.0m

10. All trees within 1m of underground utility trenches are to be excavated by hand.

11. Remove all protective wrapping from tree trunks after installation.

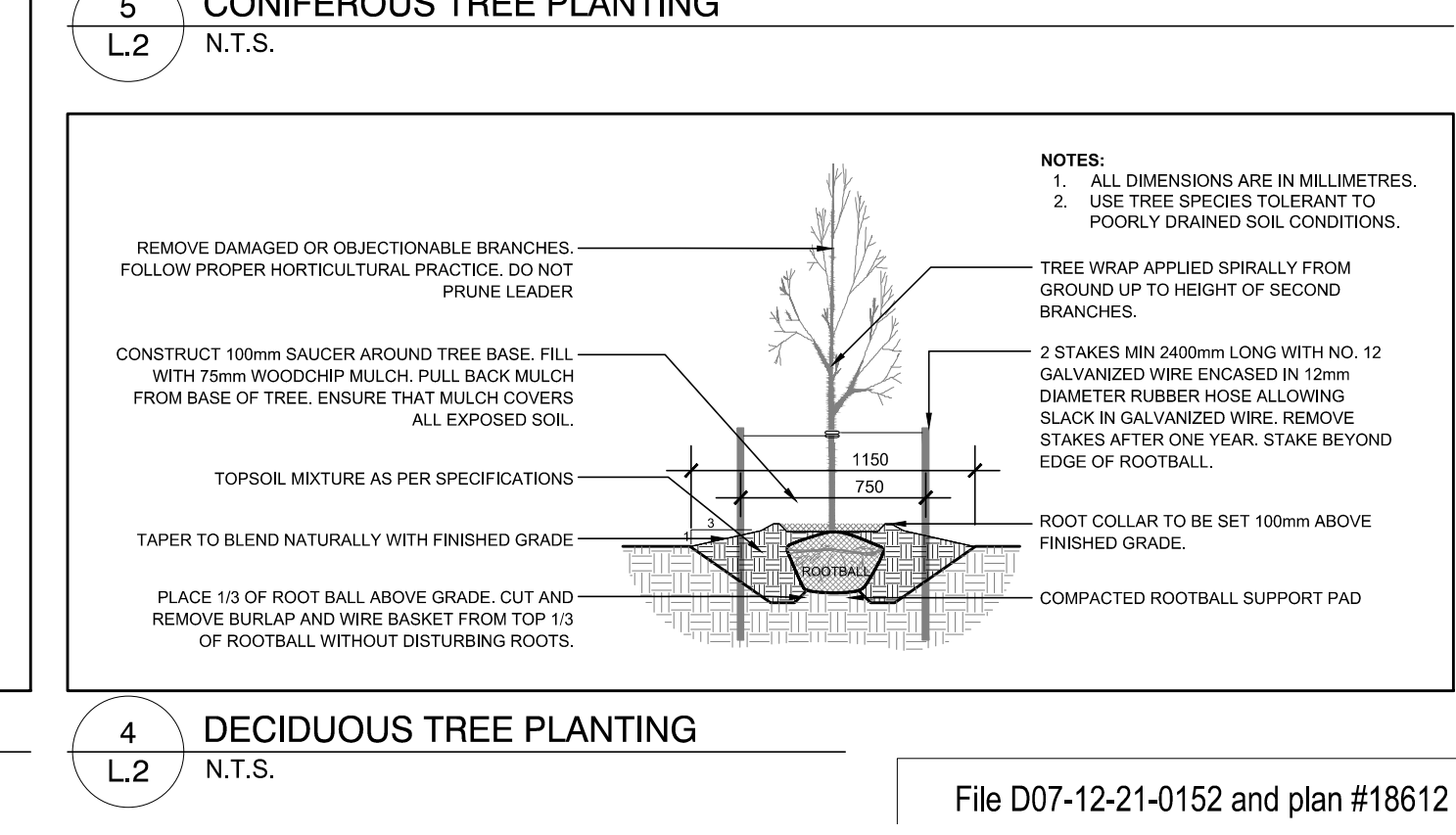
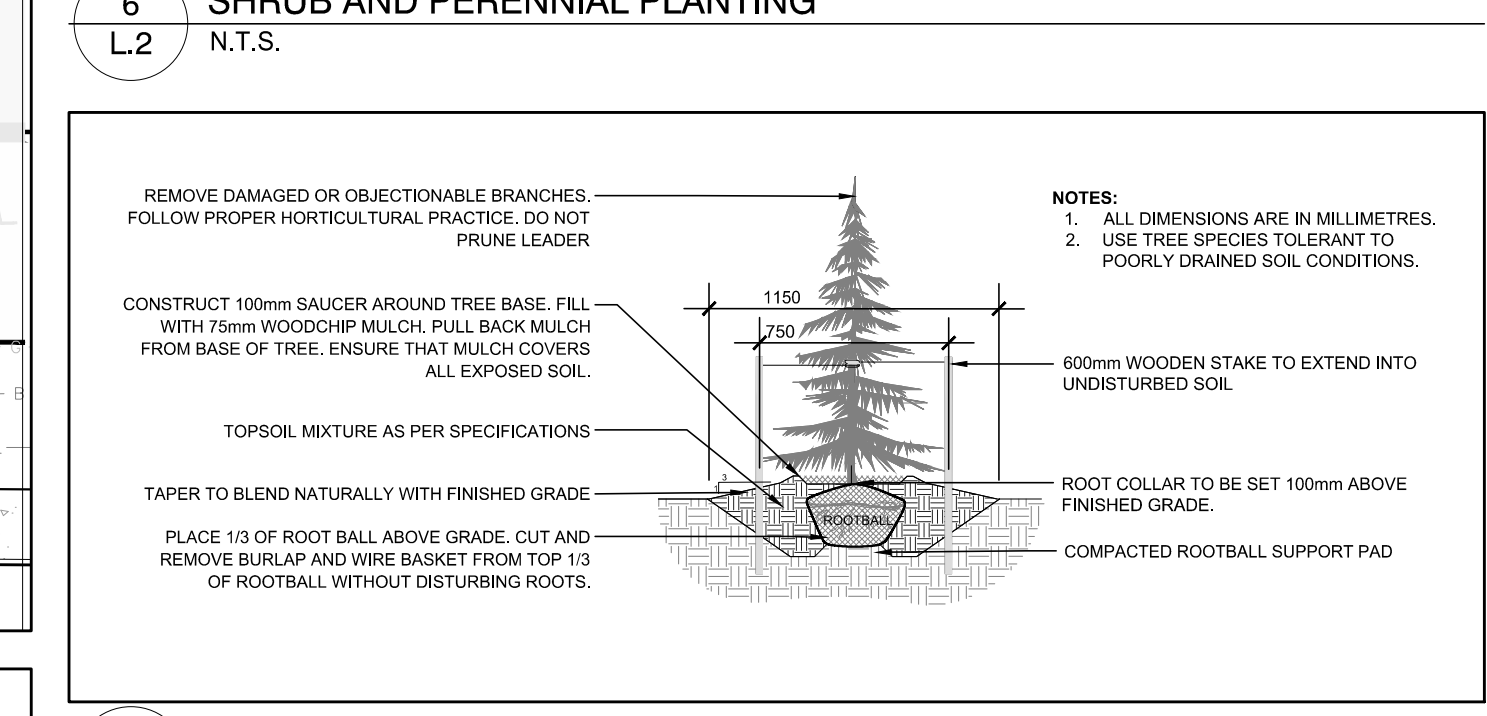
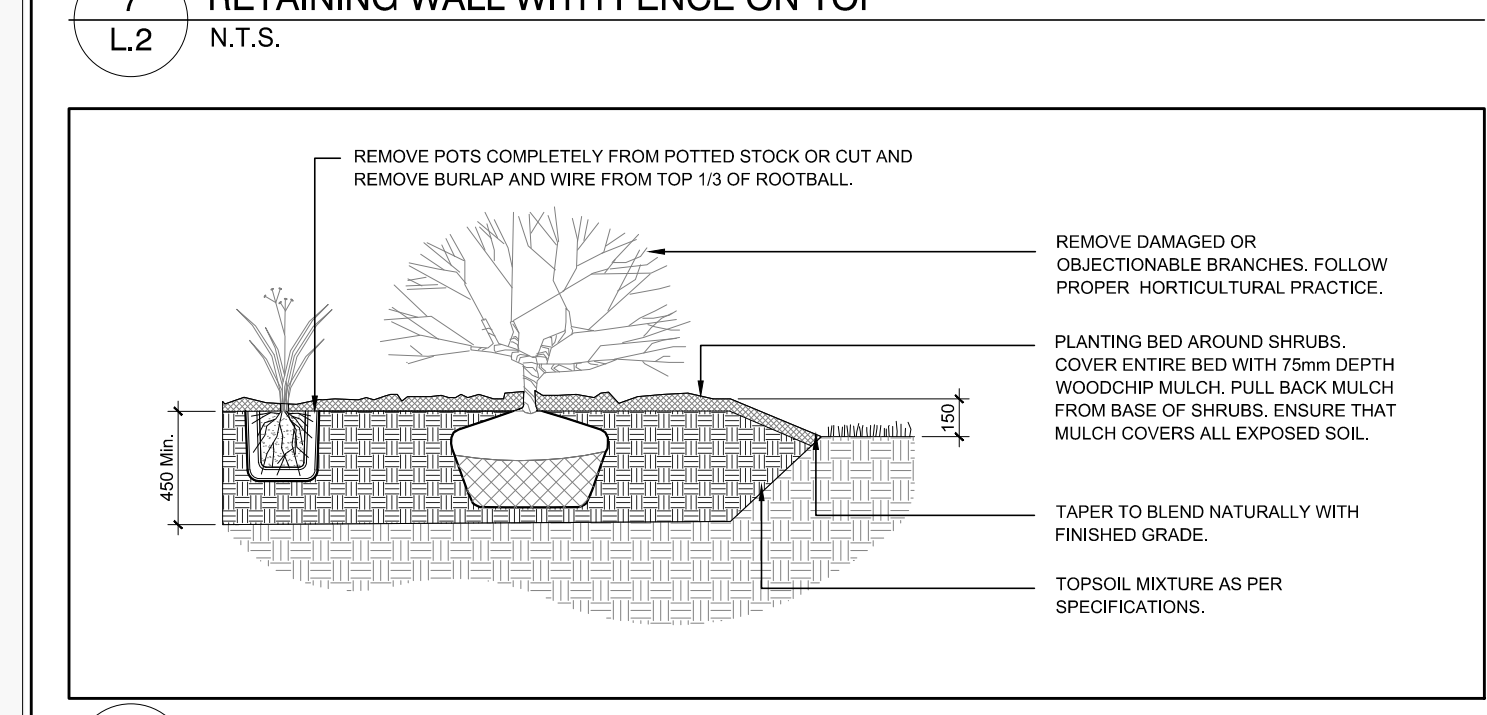
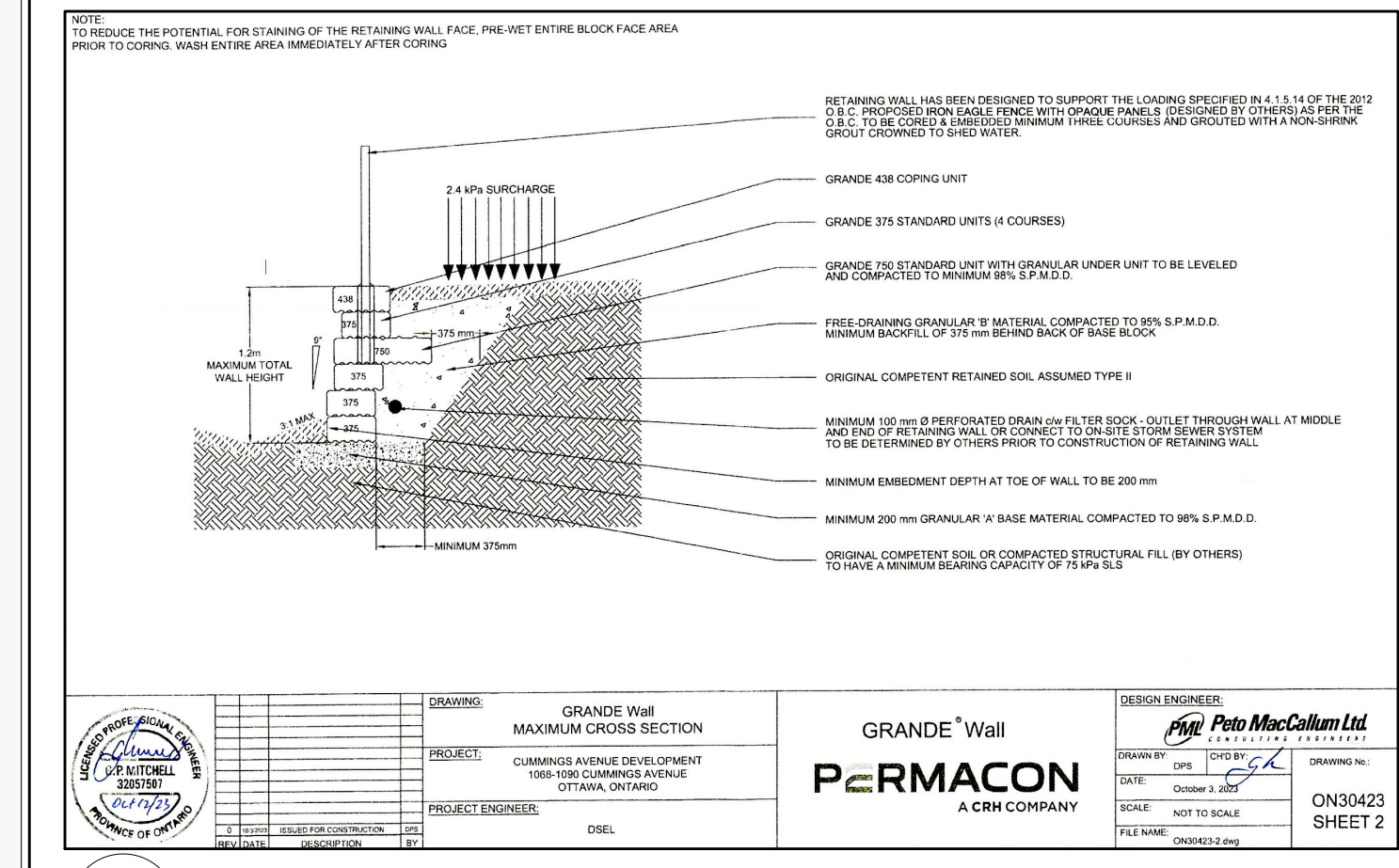
12. Staking of trees shall only be performed if necessary.

13. Ensure that mulch is pulled back a min. distance of 75mm from base of tree trunk.



PROPOSED PLANT LIST

KEY	QTY	BOTANICAL NAME	COMMON NAME	SIZE	CONDITION	REMARKS	ORIGIN
TREES							
AF	1	<i>Acer freemanii</i>	Freeman's Maple	60mm cal.	B&B		Native
AG	3	<i>Acer ginnala</i>	Amur Maple	60mm cal.	B&B		Non-native
AR	3	<i>Acer rubrum</i>	Red Maple	60mm cal.	B&B		Native
AS	4	<i>Acer saccharum</i>	Sugar Maple	60mm cal.	B&B		Native
CO	1	<i>Cornus occidentalis</i>	Hackberry	60mm cal.	B&B		Native
GB	2	<i>Ginkgo biloba</i>	Ginkgo	60mm cal.	B&B		Non-native
GD	6	<i>Glodisia triacanthos var. inermis 'Draves'</i>	Street Keeper Honeylocust	60mm cal.	B&B		Native
GT	2	<i>Glodisia triacanthos</i>	Honey Locust	60mm cal.	B&B		Native
MA	1	<i>Malus sp.</i>	Crabapple	60mm cal.	B&B		Non-Native
QR	4	<i>Quercus rubra</i>	Red Oak	60mm cal.	B&B		Native
SR	4	<i>Syringa reticulata</i>	Japanese Tree Lilac	60mm cal.	B&B		Non-Native
SB	3	<i>Amelanchier canadensis</i>	Canadian Serviceberry	60mm cal.	B&B		Native
SHRUBS							
Ha	27	<i>Hydrangea arborescens 'Annabelle'</i>	Annabelle Hydrangea	3 gal. pot.	Potted	800 mm o.c.	Non-Native
Ra	27	<i>Rhus aromatica 'Grow-Low'</i>	Grow-Low Fragrant Sumac	600mm ht.	Potted	800 mm o.c.	Native
So	8	<i>Symphoricarpos orbiculatus</i>	Coralberry	600mm ht.	Potted	800 mm o.c.	Non-Native
Sa	8	<i>Symphoricarpos albus</i>	Snowberry	600mm ht.	Potted	800 mm o.c.	Native
PERENNIALS							
la	48	<i>Leymus arenarius</i>	Blue Lyme Grass	1 gal pot.	Potted	300 mm o.c.	Non-native



CLIENT:

210 Gladstone Avenue
OTTAWA, ONTARIO K2P 0Y6
T: (613) 233-6000 F: (613) 233-8290

ARCHITECTS:

1435, RUE SAINT-ALEXANDRE,
BUREAU 1000
MONTREAL, (QUEBEC) H3A 2G4
T: 514-393-9490 F: 514-393-9498
info@evooarchitect.com

LANDSCAPE ARCHITECTS:

JAMES B. LENNOX & ASSOCIATES INC.
LANDSCAPE ARCHITECTS
3332 CARLING AVE. OTTAWA, ONTARIO K2H 5A8
Tel. (613) 722-5168 Fax. (1)866 343-3942

STRUCTURAL ENGINEERS:

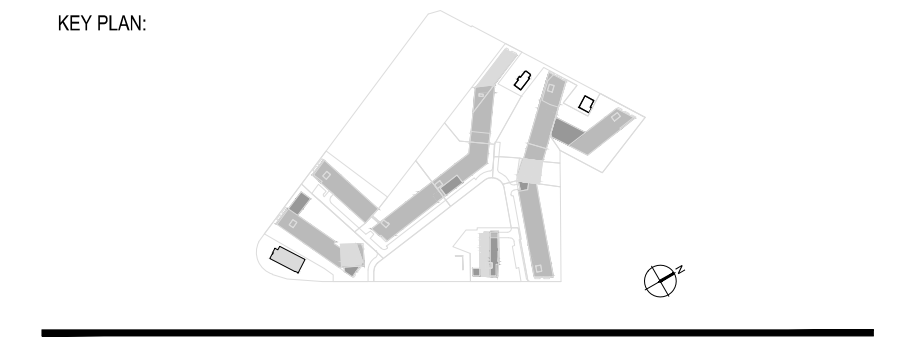
17 Avenue D., Suite 18, Ottawa ON K2E 7Z7
Tel: 613-258-0580 www.goodeve.com

CIVIL ENGINEERS:

396 Cooper St. Suite 300
Ottawa, Ontario, Canada K2M 1P6
Tel: (613) 254-9643
Facsimile: (613) 254-9887
Email: novatech@novatech-eng.com

TOPOGRAPHICAL SURVEYOR:

Annis O'Sullivan, Vollebek Ltd.,
Ontario Land Surveyors
14 Concourse Gate, Suite 500
Nepean, Ontario, K2E 7S6
Tel: (613) 727-0850
email: nepean@sovland.com



No.	DESCRIPTION:	BY	DATE
10	ISSUED FOR SITE PLAN CONTROL R05	WF	11/16/2024
9	ISSUED FOR COORDINATION	WF	09/10/2024
8	ISSUED FOR COORDINATION	WF	08/12/2024
7	ISSUED FOR COORDINATION	WF	07/25/2024
6	ISSUED FOR CITY OF OTTAWA 2ND SUBMISSION	WF	04/03/2024

REVISION:

THE GENERAL CONTRACTOR:

- SHALL BE RESPONSIBLE FOR VERIFYING ALL DIMENSIONS ON SITE TO ENSURE COMPLIANCE WITH THE DIMENSIONS GIVEN ON THE DRAWINGS.
- SHALL BE RESPONSIBLE TO IMMEDIATELY SUBMIT A REPORT TO THE ARCHITECT OR ENGINEER OUTLINING ANY INACCURACIES.
- SHALL NOT TAKE SCALED MEASUREMENTS OFF THE DRAWINGS.
- ANY INDIVIDUAL OR FIRM THAT HAVE RECEIVED ELECTRONIC DOCUMENT SHALL USE THEM AT THEIR OWN RISK. ONLY ORIGINAL DRAWINGS, STAMPED BY THE ARCHITECT, MAY BE USED FOR CONSTRUCTION.

SEAL

PROJECT:

1500 MERIVALE

DRAWING TITLE:

LANDSCAPE PLAN - PHASE 1

DESIGN: JL APPROVED: JL

DRAWN: SL DATE: NOV, 2022

VERIFIED: JL SCALE: AS NOTED

PROJECT NO: 21CLG2145 DRAWING NO: L.2