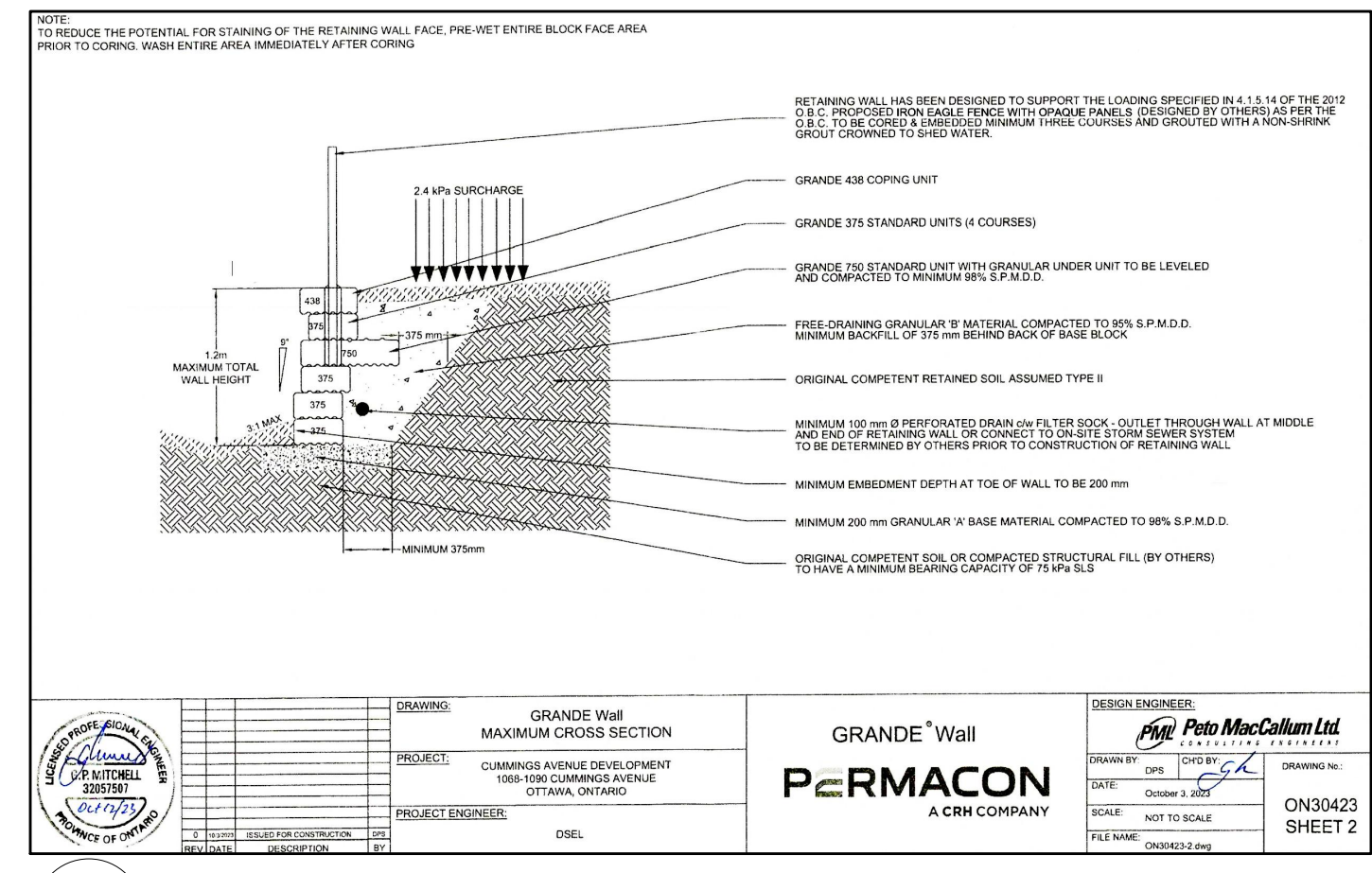
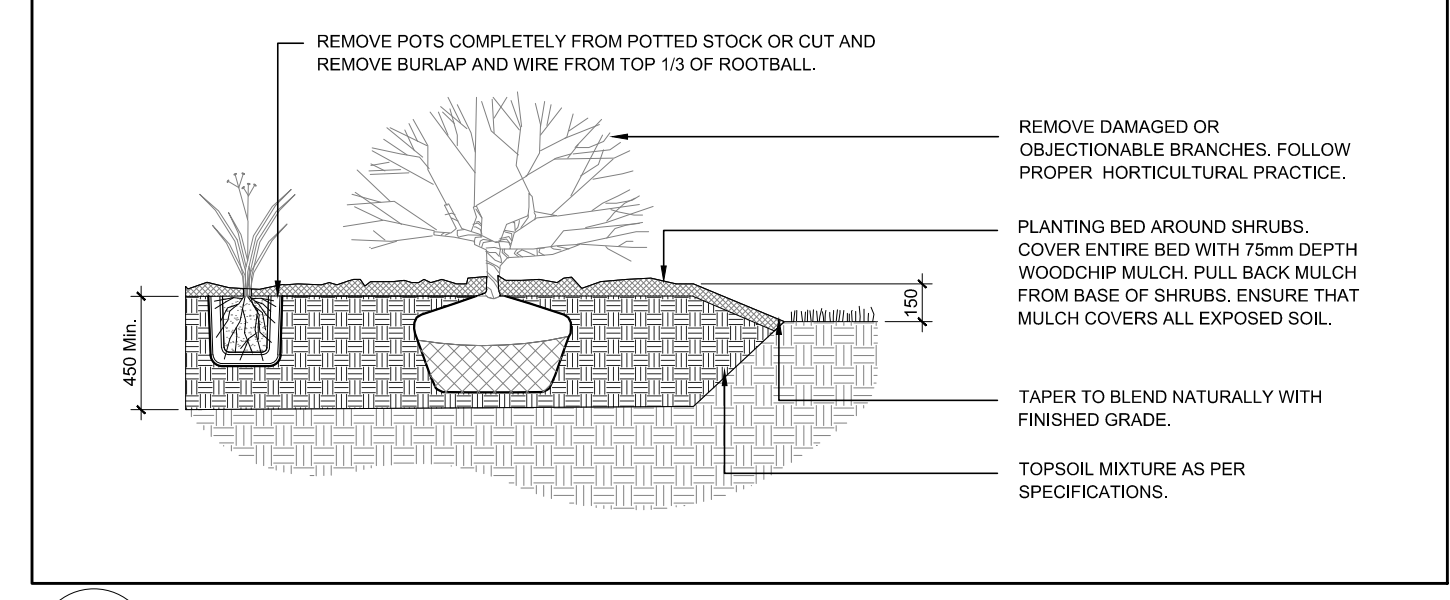


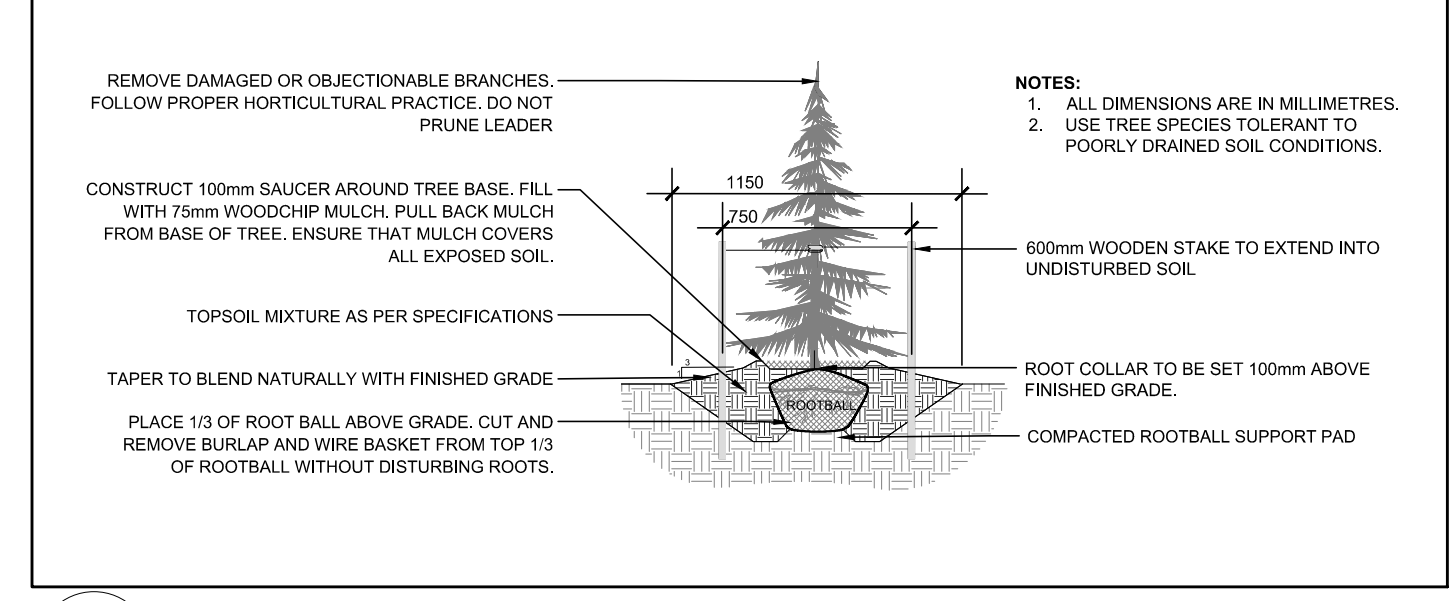
PROPOSED PLANT LIST						
KEY	QTY	BOTANICAL NAME	COMMON NAME	SIZE	CONDITION	REMARKS
TREES						
AF	1	<i>Acer freemanii</i>	Freeman's Maple	60mm cal.	B&B	Native
AG	3	<i>Acer ginnala</i>	Amur Maple	60mm cal.	B&B	Non-native
AR	3	<i>Acer rubrum</i>	Red Maple	60mm cal.	B&B	Native
AS	4	<i>Acer saccharum</i>	Sugar Maple	60mm cal.	B&B	Native
CO	1	<i>Cornus occidentalis</i>	Hackberry	60mm cal.	B&B	Native
GB	2	<i>Ginkgo biloba</i>	Ginkgo	60mm cal.	B&B	Non-native
GD	8	<i>Gladiolus triacanthos</i> var. <i>inermis</i>	Street Keeper Honeylocust	60mm cal.	B&B	Native
GT	2	<i>Gladiolus triacanthos</i>	Honey Locust	60mm cal.	B&B	Native
MA	1	<i>Malus</i> sp.	Crabapple	60mm cal.	B&B	Native
QR	4	<i>Quercus rubra</i>	Red Oak	60mm cal.	B&B	Native
SR	5	<i>Syringa reticulata</i>	Japanese Tree Lilac	60mm cal.	B&B	Non-native
SB	3	<i>Amelanchier canadensis</i>	Canadian Serviceberry	60mm cal.	B&B	Native
SHRUBS						
Ha	27	<i>Hydrangea arborescens</i> 'Annabelle'	Annabelle Hydrangea	3 gal. pot.	Potted	800 mm o.c.
Ra	27	<i>Rhus aromatica</i> 'Grow-Low'	Grow-Low Fragrant Sumac	600mm ht.	Potted	800 mm o.c.
So	8	<i>Symphoricarpos orbiculatus</i>	Coralberry	600mm ht.	Potted	800 mm o.c.
Sa	8	<i>Symphoricarpos albus</i>	Snowberry	600mm ht.	Potted	800 mm o.c.
PERENNIALS						
la	16	<i>Leymus arenarius</i>	Blue Lyme Grass	1 gal pot.	Potted	300 mm o.c.



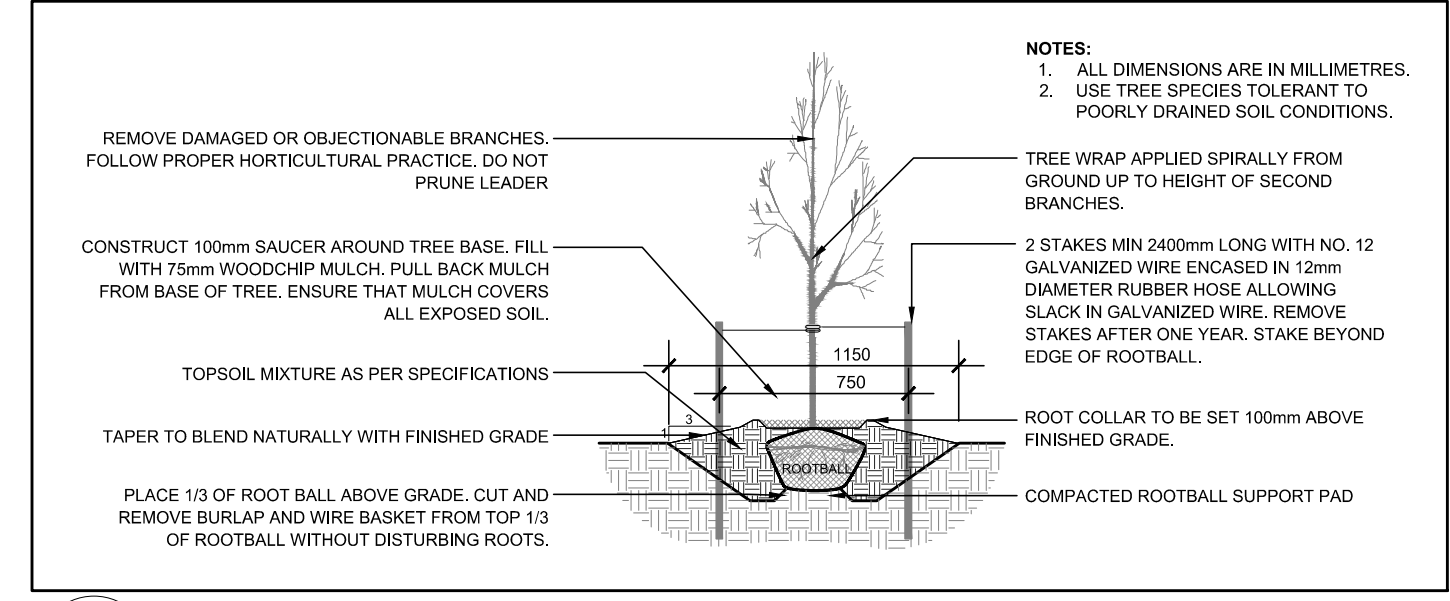
7 RETAINING WALL WITH FENCE ON TOP
L2 N.T.S.



6 SHRUB AND PERENNIAL PLANTING
L2 N.T.S.



5 CONIFEROUS TREE PLANTING
L2 N.T.S.



4 DECIDUOUS TREE PLANTING
L2 N.T.S.

LEGEND	
[Symbol]	UNIT PAVERS TYPE 1
[Symbol]	UNIT PAVERS TYPE 2
[Symbol]	UNIT PAVERS TYPE 3/ STEPPING STONES
[Symbol]	PROPOSED RIVERSTONE
[Symbol]	EXISTING CONCRETE SIDEWALK
[Symbol]	CONCRETE (REFER TO CIVIL)
[Symbol]	PROPOSED SOD
[Symbol]	PROPOSED WOOD CHIP/ PEA GRAVEL PATH
[Symbol]	C.I.P. CONCRETE RETAINING/ PLANTER WALL
[Symbol]	PROPERTY LINE
[Symbol]	PROPOSED 0.9m ht. ORNAMENTAL METAL FENCE
[Symbol]	PROPOSED DECIDUOUS TREE
[Symbol]	FUTURE PHASE TREE
[Symbol]	PROPOSED SHRUBS/ PERENNIALS
[Symbol]	BOLLARD LIGHT
[Symbol]	AREA DRAIN
[Symbol]	BENCH
[Symbol]	STREET LIGHTING @ 50M O.C. REFER TO CIVIL

1 LANDSCAPE PLAN
L2 SCALE 1:200

GENERAL NOTES:

- It is the responsibility of the appropriate contractor or official to report any errors, omissions or discrepancies on this plan with actual site conditions to the Landscape Architect before proceeding with construction.
- The contractor is to notify all utility companies and authorities prior to any excavation and ascertain locations of underground services.
- The contractor is to reinstate all areas and items damaged as a result of construction activity.
- The contractor is to comply with all pertinent codes and by-laws.
- The contractor is to maintain a positive surface run-off throughout the entire construction period.
- The Landscape Architect is not responsible for subsurface conditions.
- The contractor is to identify all existing trees to remain on site with the Landscape Architect prior to construction.
- The contractor is to stake the proposed location of all plant material in conjunction with the Landscape Architect prior to excavation.

9. Minimum distances for selected deciduous trees are as follows:

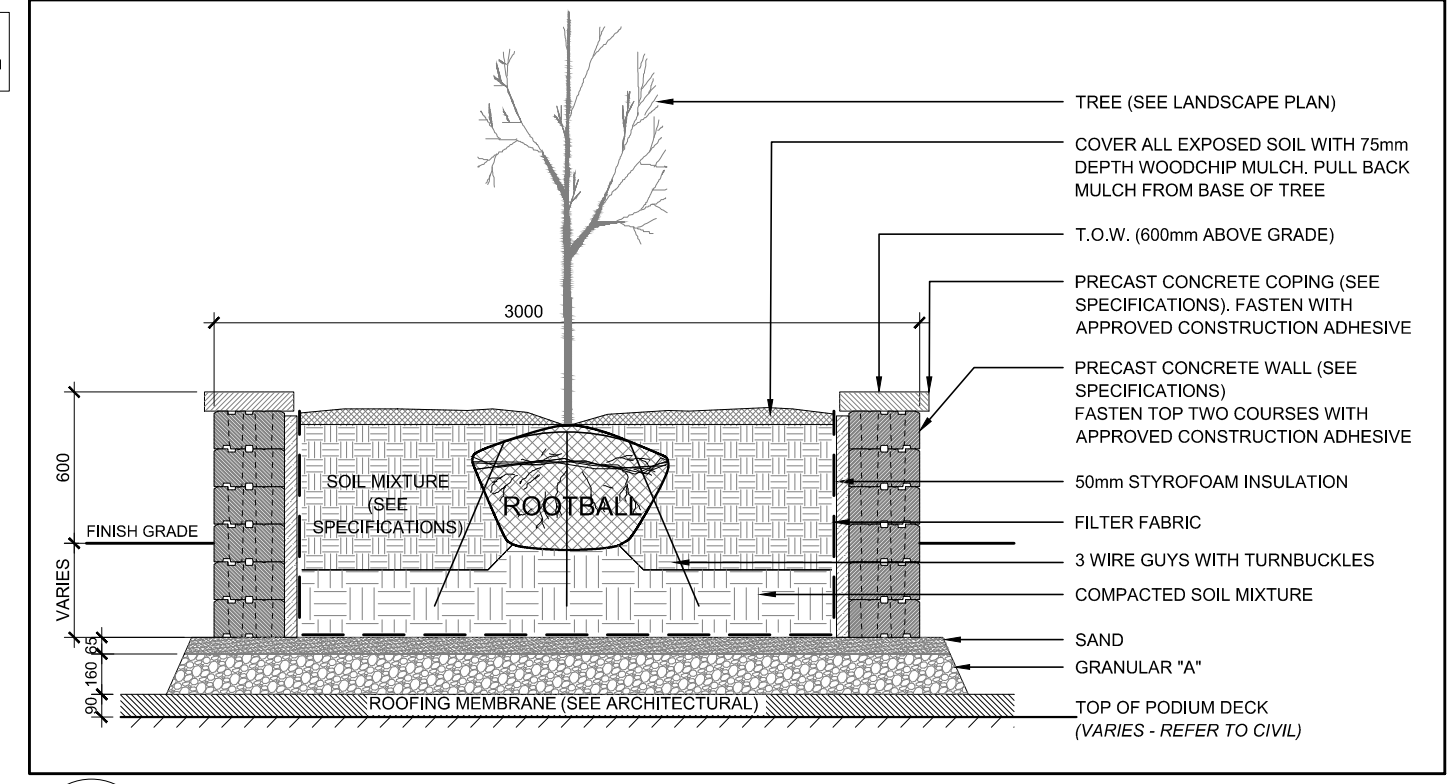
- Building Foundations 7.5m
- Sidewalks 1.5m
- Public Streets 2.5m
- Underground Infrastructure 2.0m

10. All trees within 1m of underground utility trenches are to be excavated by hand.

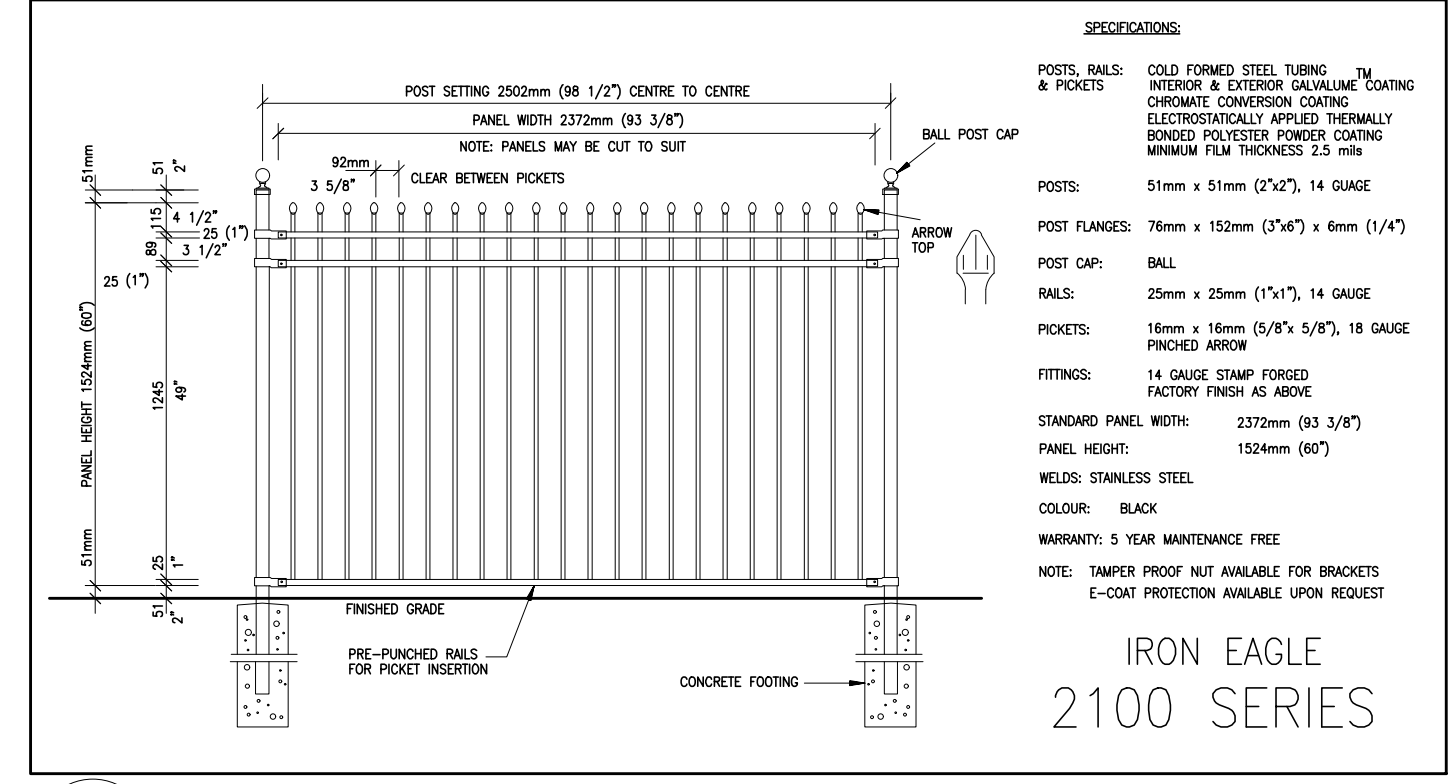
11. Remove all protective wrapping from tree trunks after installation.

12. Staking of trees shall only be performed if necessary.

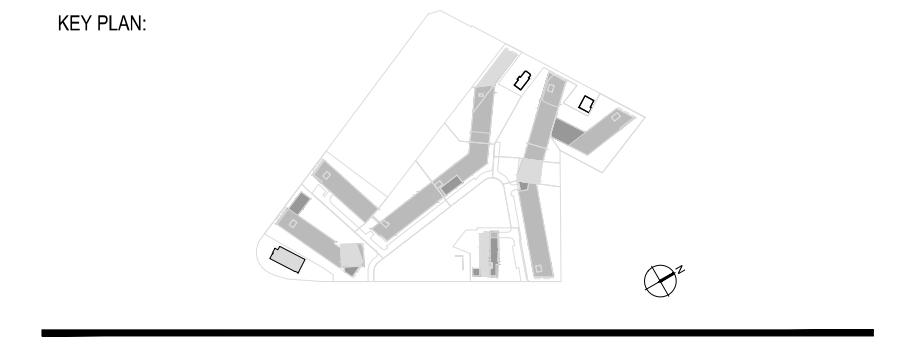
13. Ensure that mulch is pulled back a min. distance of 75mm from base of tree trunk.



2 TREE PLANTER ABOVE ROOF DECK
L2 N.T.S.



3 1.5m Ht. ORNAMENTAL METAL FENCE
L2 N.T.S.



NO.	DESCRIPTION	BY	DATE
6	ISSUED FOR CITY OF OTTAWA 2ND SUBMISSION	WF	04/03/2024
5	ISSUED FOR COORDINATION	WF	10/24/2023
4	ISSUED FOR COORDINATION	SL	10/24/2023
3	ISSUED FOR COORDINATION	SL	06/21/2023
2	ISSUED FOR COORDINATION	SL	11/25/2022
1	ISSUED FOR COORDINATION	LC	07/07/2021

THE GENERAL CONTRACTOR:

- SHALL BE RESPONSIBLE FOR VERIFYING ALL DIMENSIONS ON SITE TO ENSURE COMPLIANCE WITH THE DIMENSIONS GIVEN ON THE DRAWINGS.
- SHALL BE RESPONSIBLE TO IMMEDIATELY SUBMIT A REPORT TO THE ARCHITECT OR ENGINEER OUTLINING ANY INACCURACIES.
- SHALL NOT TAKE SCALED MEASUREMENTS OFF THE DRAWINGS.
- ANY INDIVIDUAL OR FIRM THAT HAS RECEIVED ELECTRONIC DOCUMENT SHALL USE THEM AT THEIR OWN RISK. ONLY ORIGINAL DRAWINGS, STAMPED BY THE ARCHITECT, MAY BE USED FOR CONSTRUCTION.

