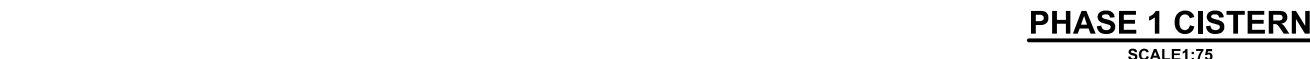
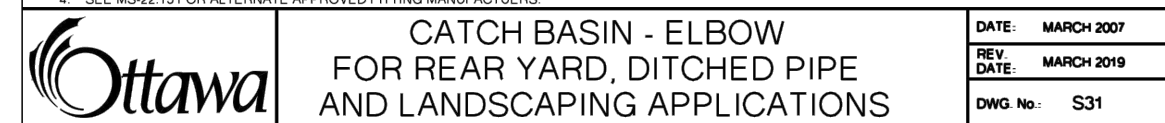
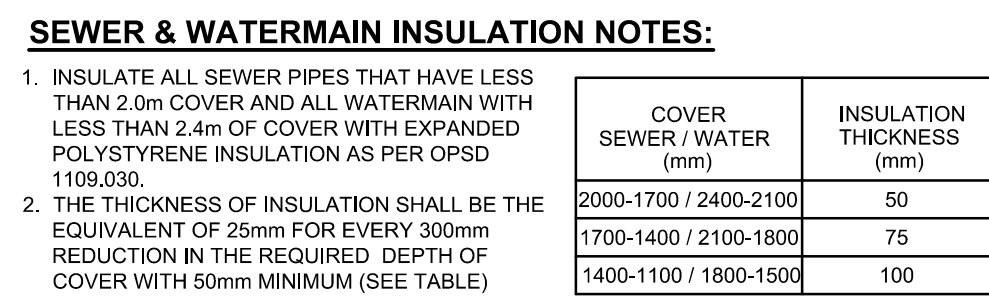
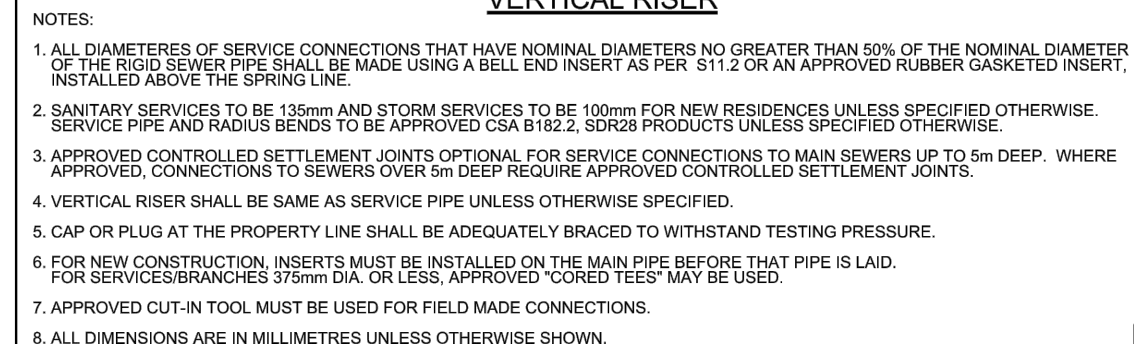


1. COORDINATE AND SCHEDULE ALL WORK WITH OTHER TRADES AND CONTRACTORS.
2. DETERMINE THE EXIST LOCATION, SIZE, MATERIAL AND ELEVATION OF ALL EXISTING UTILITIES PRIOR TO COMMENCING CONSTRUCTION. PROTECT AND ASSUME RESPONSIBILITY FOR ALL EXISTING UTILITIES: WHETHER OR NOT SHOWN ON THIS DRAWING.
3. OBTAIN ALL NECESSARY PERMITS AND APPROVALS FROM THE CITY OF OTTAWA BEFORE COMMENCING CONSTRUCTION.
4. BEFORE COMMENCING CONSTRUCTION OBTAIN AND PROVIDE PROOF OF COMPREHENSIVE, ALL RISK AND OPERATIONAL LIABILITY INSURANCE FOR \$2,000,000.00. INSURANCE POLICY TO NAME OWNERS, ENGINEERS AND ARCHITECTS AS CO-INSURED.
5. RESTORE ALL DISTURBED AREAS ON-SITE AND OFF-SITE, INCLUDING TRENCHES AND SURFACES ON PUBLIC ROAD ALLOWANCES TO EXISTING CONDITIONS OR BETTER TO THE SATISFACTION OF THE CITY OF OTTAWA AND ENGINEER.
6. REMOVE FROM SITE ALL EXCESS EXCAVATED MATERIAL, ORGANIC MATERIAL AND DEBRIS UNLESS OTHERWISE INSTRUCTED BY ENGINEER. STOCKPILE AND REMOVE FROM SITE ANY CONTAMINATED MATERIAL. ALL CONTAMINATED MATERIAL SHALL BE DISPOSED OF AT A LICENSED LANDFILL FACILITY.
7. ALL DIMENSIONS AND INVERTS MUST BE VERIFIED PRIOR TO CONSTRUCTION. IF THERE IS ANY DISCREPANCY THE CONTRACTOR IS TO NOTIFY THE ENGINEER PROMPTLY.
8. ALL ELEVATIONS ARE GEODETIC. THE SITE BENCHMARKS ARE THE FIRE HYDRANT TOP OF SPINDLE, BM NO 1 IS LOCATED APPROXIMATELY 105m FROM MERIVALE RD AND CLYDE AVE INTERSECTION, LOCATED ON THE EAST SIDE OF CLYDE AVE, BM NO 2 IS LOCATED AT THE EAST SIDE OF CLYDE AVE AND APPROXIMATELY 150m FROM BASLINE ROAD AND CLYDE AVE INTERSECTION, BM NO 1 ELEVY = 85.06, BM NO 2 ELEVY = 86.25. REFER TO ANNIE OUSILLIAN, VOLLEBEEK LTD. TOPOGRAPHICAL PLAN OF SURVEY PART OF LOTS 18 AND 19, AND 21 REGISTERED PLAN 30 CITY OF OTTAWA.
9. REFER TO GEOTECHNICAL INVESTIGATION REPORT PATTERSON GROUP, REFER P65661-1, DATED FEBRUARY 23, 2021 FOR SUBSURFACE CONDITIONS, CONSTRUCTION RECOMMENDATIONS AND GEOTECHNICAL SPECIFICATION REQUIREMENTS. THE GEOTECHNICAL CONSULTANT IS TO REVIEW ON-SITE CONDITIONS AFTER EXCAVATION PRIOR TO PLACEMENT OF THE GRANULAR MATERIAL.
10. REFER TO ARCHITECTS AND LANDSCAPE ARCHITECT'S DRAWINGS FOR BUILDING AND HARD SURFACE AREAS AND DIMENSIONS.
11. REFER TO THE STORMWATER MANAGEMENT REPORT R-2023-152, DATED MARCH 18, 2025 PREPARED BY NOVATECH.
12. SAW CUT AND KEYGRIND ASPHALT AT ALL ROAD CUTS AND ASPHALT TIE IN POINTS AS PER CITY OF OTTAWA STANDARDS (R10 AND R20).
13. PROVIDE LANDPARKING PAINTING.
14. CONTRACTOR TO PROVIDE THE CONSULTANT WITH A GENERAL PLAN OF SERVICES INDICATING ALL SERVING AS-BUILT UTILITIES SHOWN ON THIS PLAN, AS-BUILT INFORMATION MUST INCLUDE: PIPE MATERIAL, SIZES, LENGTHS, SLOPES, INVERT AND TIG ELEVATIONS, STRUCTURE LOCATIONS, VALVE AND HYDRANT LOCATIONS, TWM ELEVATIONS AND ANY ALIGNMENT CHANGES, ETC.
15. CONTRACTOR IS RESPONSIBLE FOR ALL LAYOUT FOR CONSTRUCTION PURPOSES.

SUPPLY AND CONTRACT ALL SEWERS AND APPURTENANCES IN ACCORDANCE WITH THE MOST CURRENT CITY OF OTTAWA STANDARDS AND SPECIFICATIONS.		
2. SPECIFICATIONS:		
ITEM	SPEC. NO.	REFERENCE
SANITARY/STORM/CATCH-BASIN MANHOLE (1200mm)	701.010	OPSD
STORM MANHOLE (1500mm)	701.011	OPSD
STORM MANHOLE (1800mm)	701.012	OPSD
CATCH-BASIN (600x600)	705.010	OPSD
DOUBLE CATCH-BASIN (600 X 1450)	705.011	OPSD
CATCH-BASIN FRAME AND COVER	400.020	CITY OF OTTAWA
STORM-SANITARY MH FRAME	S25	CITY OF OTTAWA
SANITARY COVER	S24.1	CITY OF OTTAWA
STORM COVER (CLOSED)	S24.1	CITY OF OTTAWA
STORM COVER (OPEN)	S28.1	CITY OF OTTAWA
SEWER TRENCH	58.457	CITY OF OTTAWA
STORM SEWER > 450mm Ø	PVC DR 36 (UNLESS SPECIFIED OTHERWISE)	CITY OF OTTAWA
STORM SEWER <= 450mm Ø	CONC 60 (UNLESS SPECIFIED OTHERWISE)	CITY OF OTTAWA
SANITARY SEWER	PVC DR 35	CITY OF OTTAWA
CATCH-BASIN LEAD	PVC DR 35	CITY OF OTTAWA
CATCH-BASIN COVER	PVC DR 35	CITY OF OTTAWA
ROAD SUBURBAN (CONTINUOUS)	R1	CITY OF OTTAWA
WATERTIGHT FRAME & COVER	401.030	OPSD
2. INSULATE ALL PIPES (SANITARY) THAT HAVE LESS THAN 2.0m COVER WITH 50mmX120mm H-40 INSULATION. PROVIDE 150mm CLEARANCE BETWEEN PIPE AND INSULATION (REFER TO DETAIL).		
3. SERVICES ARE TO BE CONSTRUCTED TO 1.0M FROM FACE OF BUILDING AT A MINIMUM SLOPE OF 1.0% (2.0% PREFERRED).		
4. ALL STORM AND SANITARY LATERALS SHALL BE EQUIPPED WITH BACKFLOW PREVENTION DEVICES AS PER THE CITY OF OTTAWA STANDARD DETAILS S14.1 AND S14.1 OR S14.2.		
5. A MINIMUM OF 150 mm Ø SPSS GRANULAR A SHALL BE PLACED FOR BEDDING FOR SEWER OR WATER PIPES WHEN PLACED ON AN SUBGRADE. IF THE BEDDING IS PLACED ON BEDROCK, THE THICKNESS OF THE BEDDING SHOULD BE INCREASED TO 300 mm FOR SEWER PIPES. THE BEDDING SHOULD EXTEND TO THE SPRING LINE OF THE PIPE. COVER MATERIAL FROM THE SPRING LINE TO A MINIMUM OF 300 mm ABOVE THE COVERT OF THE PIPE SHOULD CONSIST OF OPSX 150mm GRANULAR B. THE BEDDING SHOULD BE COMPACTED TO 95% OF THE SPMD. THE USE OF CLEAR CRUSHED STONE AS A BEDDING LAYER SHALL NOT BE PERMITTED.		
6. WHERE HARD SURFACE AREAS ARE CONSIDERED ABOVE THE TRENCH BACKFILL, THE TRENCH BACKFILL MATERIAL WITHIN THE HARD SURFACE AREAS (BASE) SHALL BE FINISHED GRADE/SPREAD GRADUAL TO THE TRENCH WALLS TO REDUCE THE POTENTIAL DIFFERENTIAL FROST HEAVING. THE TRENCH BACKFILL SHOULD BE PLACED IN MAXIMUM 300mm THICK LAYERS AND COMPACTED TO A MINIMUM OF 95% OF THE SPMD.		
7. FLEXIBLE CONNECTIONS ARE REQUIRED FOR CONNECTING PIPES TO MANHOLES FOR EXAMPLE KORN-SEAL, PSX- POSITIVE SEAL, ETC. ALL JOINTS ARE TO BE CLEAN AND GRADE/SPREAD GRADUAL TO THE TRENCH WALLS TO REDUCE THE POTENTIAL DIFFERENTIAL FROST HEAVING. THE TRENCH BACKFILL SHOULD BE PLACED IN MAXIMUM 300mm THICK LAYERS AND COMPACTED TO A MINIMUM OF 95% OF THE SPMD.		
8. ALL STORM MANHOLE MANHOLES WITH PIPE SIZES LESS THAN 900mm ARE TO HAVE 300mm SLUMPS UNLESS OTHERWISE INDICATED. ALL STORM MANHOLE MANHOLES WITH PIPE SIZES 900mm AND LARGER ARE TO BE BENCHED.		
9. CONTRACTOR TO TELEPHONE (CCTV) ALL PROPOSED SEWERS 200mm Ø OR GREATER IN DIAMETER PRIOR TO BASE COURSE CONSTRUCTION TO ENSURE THE PIPES ARE CLEAN AND OPERATIONAL. UPON COMPLETION OF CONTRACT, THE CONTRACTOR IS RESPONSIBLE TO FLUSH AND CLEAN ALL SEWERS & APPURTENANCES AND RE CCTV PRIOR TO ACCEPTANCE. OBTAIN APPROVAL FROM THE CITY'S SEWER OPERATIONS, PROVIDE THE CCTV INSPECTION AND REPORT TO THE ENGINEER FOR REVIEW AND APPROVAL.		
10. CONTRACTOR TO PROVIDE THE CONSULTANT WITH A GENERAL PLAN OF SERVICES INDICATING ALL APPLICABLE SERVING AS-BUILT INFORMATION SHOWN ON THIS PLAN. AS-BUILT INFORMATION MUST INCLUDE: PIPE MATERIAL, SIZES, LENGTHS, SLOPES, INVERT AND TO ELEVATIONS, STRUCTURE LOCATIONS AND ANY ALIGNMENT CHANGES, ETC.		
11. THE CONTRACTOR SHALL BE RESPONSIBLE FOR THE PERFORMANCE OF THE FIELD TESTING FOR QUALITY CONTROL OF ALL SANITARY SEWERS. LEAKAGE TESTING SHALL BE COMPLETED IN ACCORDANCE WITH OPSX 410.07.16, 410.07.16 AND 410.07.24. DYE TESTING IS TO BE COMPLETED ON ALL SANITARY SERVICES TO CONFIRM PROPER FLOW CONNECTION TO THE SANITARY MAIN. MAIN FIELD TESTS SHALL BE PERFORMED IN THE PRESENCE OF A CERTIFIED PROFESSIONAL ENGINEER, WHO SHALL SUBMIT A CERTIFIED COPY OF THE TEST RESULTS.		
12. CITY/HASING AND SUBMIT MANHOLE TO BE PROVIDED WITH MINIMUM 3 METER LONG PERFORATED SUBDRAINS EXTENDING IN TWO DIRECTIONS AT THE SUBGRADE LEVEL. SUBDRAIN IS TO BE PROVIDED AT THE TRANSITIONS BETWEEN DIFFERENT PARTICULATE COMPOSITIONS. THE SUBGRADE SURFACE SHOULD BE SHAPED TO PROMOTE WATER FLOW TO THE DRAINAGE AREAS.		
13. ALL WORK SHALL BE PERFORMED AS APPLICABLE IN ACCORDANCE WITH CITY OF OTTAWA STANDARD SPECIFICATIONS, AND IN PARTICULAR O.P.S.S. 407 AND 410.		

1.	SUPPLY AND CONSTRUCT ALL WATERMAIN AND APPURTENANCES IN ACCORDANCE WITH THE MOST CURRENT CITY OF OTTAWA STANDARDS AND SPECIFICATIONS.		
2.	SPECIFICATIONS: ITEM: THERMAL TRENCHING THERMAL INSULATION IN SHALLOW TRENCHES THERMAL INSULATION BY OPEN STRUCTURES WATERMAIN CROSSING BELOW SEWER WATERMAIN CROSSING ABOVE SEWER HYDRANT VALVE AND VALVE BOX WATERMAIN	SPEC. NO. W17 W22 W23 W25 W25.2 WSD-24 WSD-19 PVC DR 18	REFERENCE CITY OF OTTAWA CITY OF OTTAWA CITY OF OTTAWA CITY OF OTTAWA CITY OF OTTAWA CITY OF OTTAWA CITY OF OTTAWA
3.	SUPPLY AND CONSTRUCT ALL WATERMAINS AND APPURTENANCES IN ACCORDANCE WITH THE CITY OF OTTAWA STANDARD AND SPECIFICATIONS. EXCAVATION, INSTALLATION, BACKFILL AND RESTORATION OF ALL WATERMAINS BY THE CONTRACTOR. CONNECTIONS AND SHUT-OFFS AT THE MAIN AND CHLORINATION OF THE WATER SYSTEM SHALL BE PERFORMED BY CITY OFFICIALS.		
3.	WATERMAIN SHALL BE MINIMUM 24mm DEPTH BELOW GRADE UNLESS OTHERWISE INDICATED. ANY WATERMAIN WITH LESS THAN 24mm COVER TO BE INSULATED PER THE SEWER AND WATERMAIN NOTES AND DETAIL.		
4.	PROVIDE MINIMUM CLEARANCE: BETWEEN OUTSIDE OF PIPES, AT ALL CROSSINGS AS PER CITY DETAILS W25 AND W25.2 WATERMAIN MUST HAVE A MINIMUM VERTICAL CLEARANCE OF 0.25m OVER AND 0.50m UNDER SEWERS AND ALL OTHER UTILITIES WHEN CROSSING.		
5.	WATER SERVICE IS TO BE CONSTRUCTED TO WITHIN 1.0m OF FOUNDATION WALL AND CAPPED, UNLESS OTHERWISE INDICATED.		
6.	CATHODIC PROTECTION REQUIRED FOR ALL IRON FITTINGS CITY OF OTTAWA STANDARD DETAILS WSD-39, 40, 41, 42, 43 AND 44.		
8.	IF WATERMAIN MUST BE DEFLECTED TO MEET ALIGNMENT, ENSURE THAT THE AMOUNT OF DEFLECTION USED IS LESS THAN HALF THAT RECOMMENDED BY THE MANUFACTURER.		



SAN MANHOLE TABLE (PHASE 1)				
MANHOLE ID	STATION	SIZE (mm)	T/G ELEV (m)	INVERT (m)
701	3+027.74	1200mmØ	94.35	NW=91.61 SE=91.60

7.	REVISED PER CITY COMMENTS
6.	REVISED PER CITY COMMENTS
5.	REVISED PER CITY COMMENTS
4.	REVISED PER CITY COMMENTS
3.	REISSUED PHASE 1 ONLY
2.	REVISED AND ISSUED FOR CITY APPROVAL
1.	ISSUED WITH SITE PLAN APPLICATION
No.	REVISION

SCALE
AS SHOWN

DESIGN	ARM
CHECKED	GJM
DRAWN	CJF/ARM
CHECKED	ARM
APPROVED	GJM

**NOVATECH**  
Engineers, Planners & Landscape Architects  
Suite 200, 240 Michael Cowpland Drive  
Ottawa, Ontario, Canada K2M 1P6

Telephone (613) 254-9643  
Facsimile (613) 254-5867  
Website [www.novatech-eng.com](http://www.novatech-eng.com)

LOCATION	1500 MERIVALE 1500 MERIVALE, CITY OF OTTAWA
DRAWING NAME	NOTES AND DETAILS GENERAL SERVICING (PHASE 1)

PROJECT No.		121009
REV		REV#7
DRAWING No.		121009-NDGP1



GENERAL NOTES:

- COORDINATE AND SCHEDULE ALL WORK WITH OTHER TRADES AND CONTRACTORS.
- DETERMINE THE EXACT LOCATION, SIZE, MATERIAL AND ELEVATION OF ALL EXISTING UTILITIES PRIOR TO COMMENCING CONSTRUCTION. PROTECT AND ASSUME RESPONSIBILITY FOR ALL EXISTING UTILITIES, WHETHER OR NOT SHOWN ON THIS DRAWING.
- OBTAIN ALL NECESSARY PERMITS AND APPROVALS FROM THE CITY OF OTTAWA BEFORE COMMENCING CONSTRUCTION.
- BEFORE COMMENCING CONSTRUCTION OBTAIN AND PROVIDE PROOF OF COMPREHENSIVE, ALL RISK AND OPERATIONAL LIABILITY INSURANCE FOR \$2,000,000.00. INSURANCE POLICY TO NAME OWNERS, ENGINEERS AND ARCHITECTS AS CO-INSURED.
- RESTORE ALL DISTURBED AREAS ON-SITE AND OFF-SITE, INCLUDING TRENCHES AND SURFACES ON PUBLIC ROAD ALLOWANCES TO EXISTING CONDITIONS OR BETTER TO THE SATISFACTION OF THE CITY OF OTTAWA AND ENGINEER.
- REMOVE FROM SITE ALL EXCESS EXCAVATED MATERIAL, ORGANIC MATERIAL AND DEBRIS UNLESS OTHERWISE INSTRUCTED BY ENGINEER. EXCAVATE AND REMOVE FROM SITE ANY CONTAMINATED MATERIAL. ALL CONTAMINATED MATERIAL SHALL BE DISPOSED OF AT A LICENSED LANDFILL FACILITY.
- ALL DIMENSIONS AND INVERTS MUST BE VERIFIED PRIOR TO CONSTRUCTION. IF THERE IS ANY DISCREPANCY THE CONTRACTOR IS TO NOTIFY THE ENGINEER PROMPTLY.
- ALL ELEVATIONS ARE GEODETIC. THE SITE BENCHMARKS ARE THE FIRE HYDRANT TOP OF SPINDLE. BM NO.1 IS LOCATED APPROXIMATELY 105m FROM MERIVALE RD AND CLYDE AVE INTERSECTION. LOCATED ON THE EAST SIDE OF CLYDE AVE. BM NO.2 IS LOCATED AT THE EAST SIDE OF CLYDE AVE AND APPROXIMATELY 155m FROM BASELINE ROAD AND CLYDE AVE INTERSECTION (BM NO. 1 ELEV = 86.96, BM NO.2 ELEV = 86.25). REFER TO ANNIS, O'SULLIVAN, VOLLEBERG LTD, TOPOGRAPHICAL PLAN OF SURVEY PART OF LOTS 18 AND 19, 20 AND 21 REGISTERED PLAN 30 CITY OF OTTAWA.
- REFER TO GEOTECHNICAL INVESTIGATION REPORT PATERSON GROUP, REPORT PG5561-1, DATED FEBRUARY 23, 2021 FOR SUBSURFACE CONDITIONS, CONSTRUCTION RECOMMENDATIONS AND GEOTECHNICAL INSPECTION REQUIREMENTS. THE GEOTECHNICAL CONSULTANT IS TO REVIEW ON-SITE CONDITIONS AFTER EXCAVATION PRIOR TO PLACEMENT OF THE GRANULAR MATERIAL.
- REFER TO ARCHITECT'S AND LANDSCAPE ARCHITECT'S DRAWINGS FOR BUILDING AND HARD SURFACE AREAS AND DIMENSIONS.
- REFER TO THE STORMWATER MANAGEMENT REPORT R-2023-152, DATED MARCH 18, 2025 PREPARED BY NOVATECH.
- SAW CUT AND KEYGRIND ASPHALT AT ALL ROAD CUTS AND ASPHALT TIE IN POINTS AS PER CITY OF OTTAWA STANDARDS (R10 AND R25).
- PROVIDE LINE/PARKING PAINTING.
- CONTRACTOR TO PROVIDE THE CONSULTANT WITH A GENERAL PLAN OF SERVICES INDICATING ALL SERVICING AS-BUILT INFORMATION SHOWN ON THIS PLAN. AS-BUILT INFORMATION MUST INCLUDE: PIPE MATERIAL, SIZES, LENGTHS, SLOPES, INVERT AND TIG ELEVATIONS, STRUCTURE LOCATIONS, VALVE AND HYDRANT LOCATIONS, TWM ELEVATIONS AND ANY ALIGNMENT CHANGES, ETC.
- CONTRACTOR IS RESPONSIBLE FOR ALL LAYOUT FOR CONSTRUCTION PURPOSES.

GRADING NOTES:

- ALL TOPSOIL, ORGANIC OR DELETERIOUS MATERIAL MUST BE ENTIRELY REMOVED FROM BENEATH THE PROPOSED BUILDING AND PAVED AREAS.
- EXPOSED SUBGRADES IN PROPOSED PAVED AREAS SHOULD BE PROOF ROLLED WITH A LARGE STEEL DRUM ROLLER. IF SPOTS DEVELOP IN THE SUBGRADE DURING COMPACTION OR DUE TO CONSTRUCTION TRAFFIC, THE AFFECTED AREAS SHOULD BE EXCAVATED AND REPLACED WITH OPSS GRANULAR B TYPE II MATERIAL. THE PAVEMENT GRANULAR BASE AND SUBBASE SHOULD BE PLACED IN MAXIMUM 300 mm THICK LIFTS AND COMPACTED TO A MINIMUM OF 98% OF THE MATERIAL'S SPMD0 USING SUITABLE VIBRATORY EQUIPMENT.
- NON-SPECIFIED EXISTING FILL, ALONG WITH SITE-EXCAVATED SOIL, CAN BE USED AS GENERAL LANDSCAPING FILL WHERE SETTLEMENT OF THE GROUND SURFACE IS OF MINOR CONCERN. THIS MATERIAL SHOULD BE SPREAD IN THIN LIFTS AND AT LEAST COMPACTED BY THE TRACKS OF THE SPREADING EQUIPMENT TO MINIMIZE VOIDS. IF THIS MATERIAL IS TO BE USED TO BUILD UP THE SUBGRADE LEVEL FOR AREAS TO BE PAVED, IT SHOULD BE COMPACTED IN THIN LIFTS TO AT LEAST 98% OF THE MATERIAL'S SPMD0.
- THE PAVEMENT GRANULAR BASE AND SUBBASE SHOULD BE PLACED IN MAXIMUM 300mm THICK LIFTS AND COMPACTED TO A MINIMUM OF 98% OF THE MATERIAL'S STANDARD PROCTOR MAXIMUM DRY DENSITY VALUE.
- ALL CURBS AND SIDEWALKS TO BE BUILT AS PER CITY OF OTTAWA DETAIL DRAWINGS SC1.4 AND SC4.
- GRADE AND/OR FILL BEHIND PROPOSED CURB AND BETWEEN BUILDINGS AND CURBS, WHERE REQUIRED TO PROVIDE POSITIVE DRAINAGE.
- MINIMUM OF 2% GRADE FOR ALL GRASS AREAS UNLESS OTHERWISE NOTED.
- ALL GRADES BY CURBS ARE EDGE OF PAVEMENT GRADES UNLESS OTHERWISE INDICATED.
- REFER TO LANDSCAPE PLAN FOR PLANTING AND OTHER LANDSCAPE FEATURE DETAILS.
- CONTRACTOR TO PROVIDE THE CONSULTANT WITH A GRADING PLAN INDICATING THE AS-BUILT ELEVATION OF EVERY DESIGN GRADE SHOWN ON THIS PLAN.

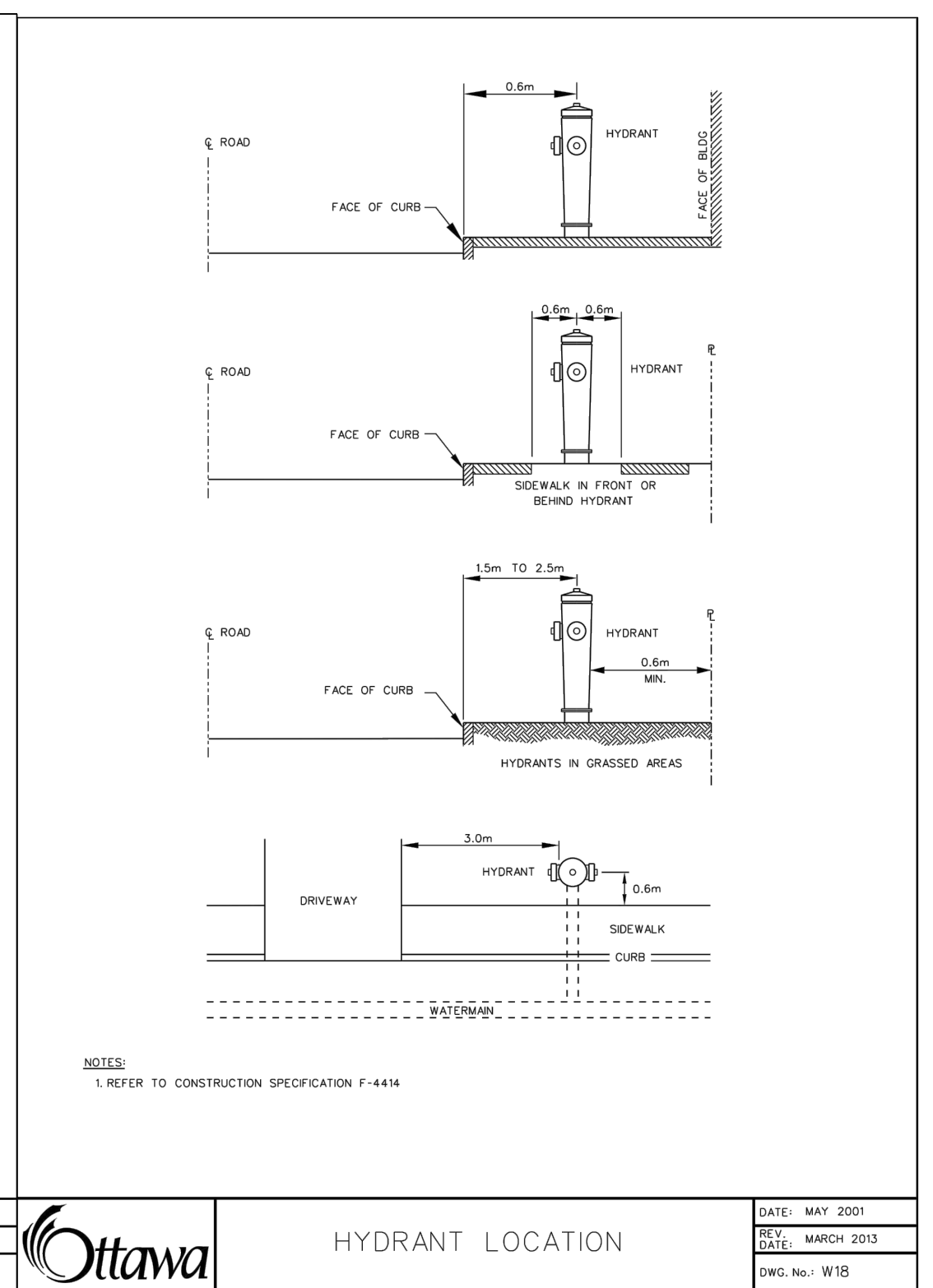
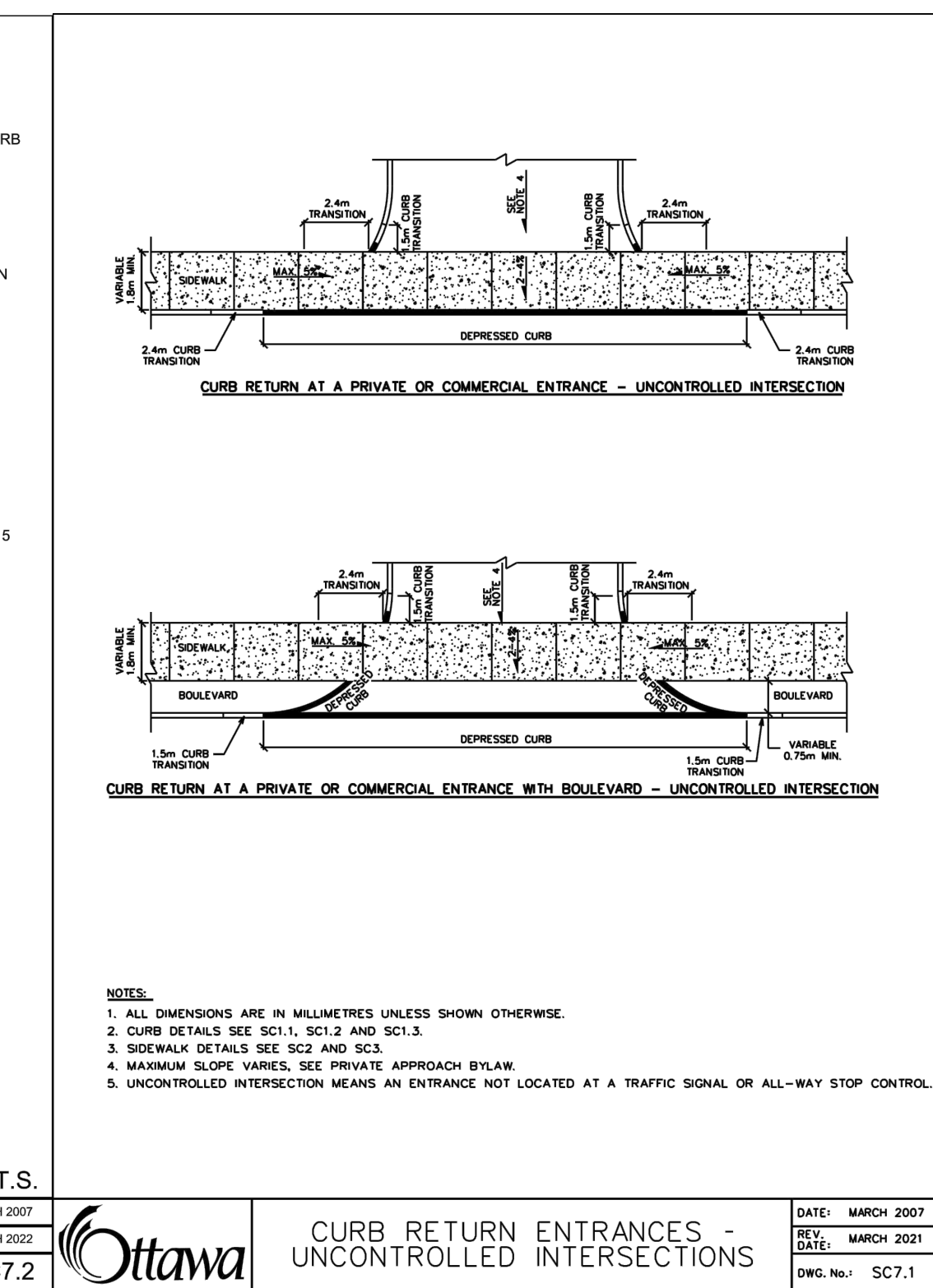
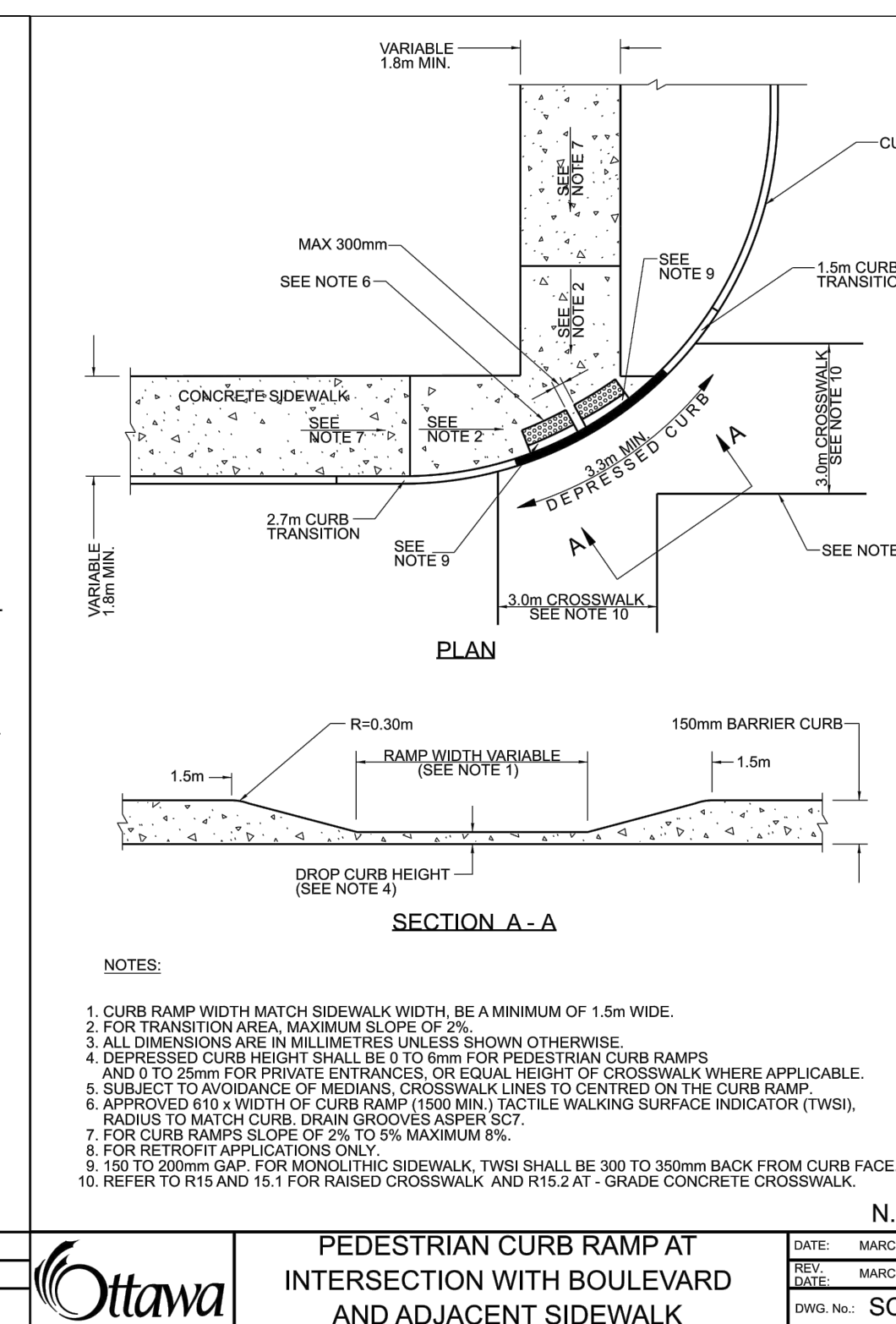
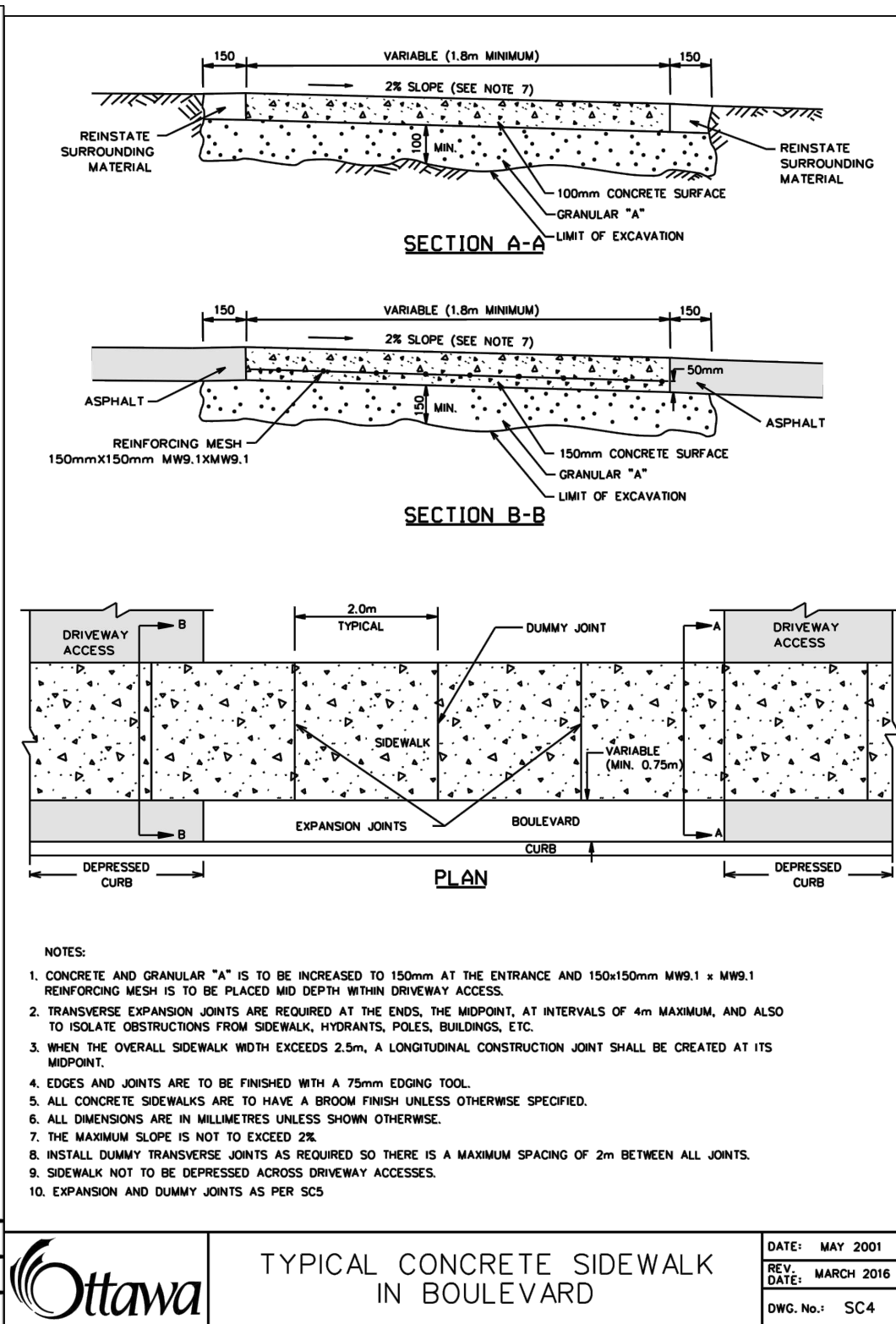
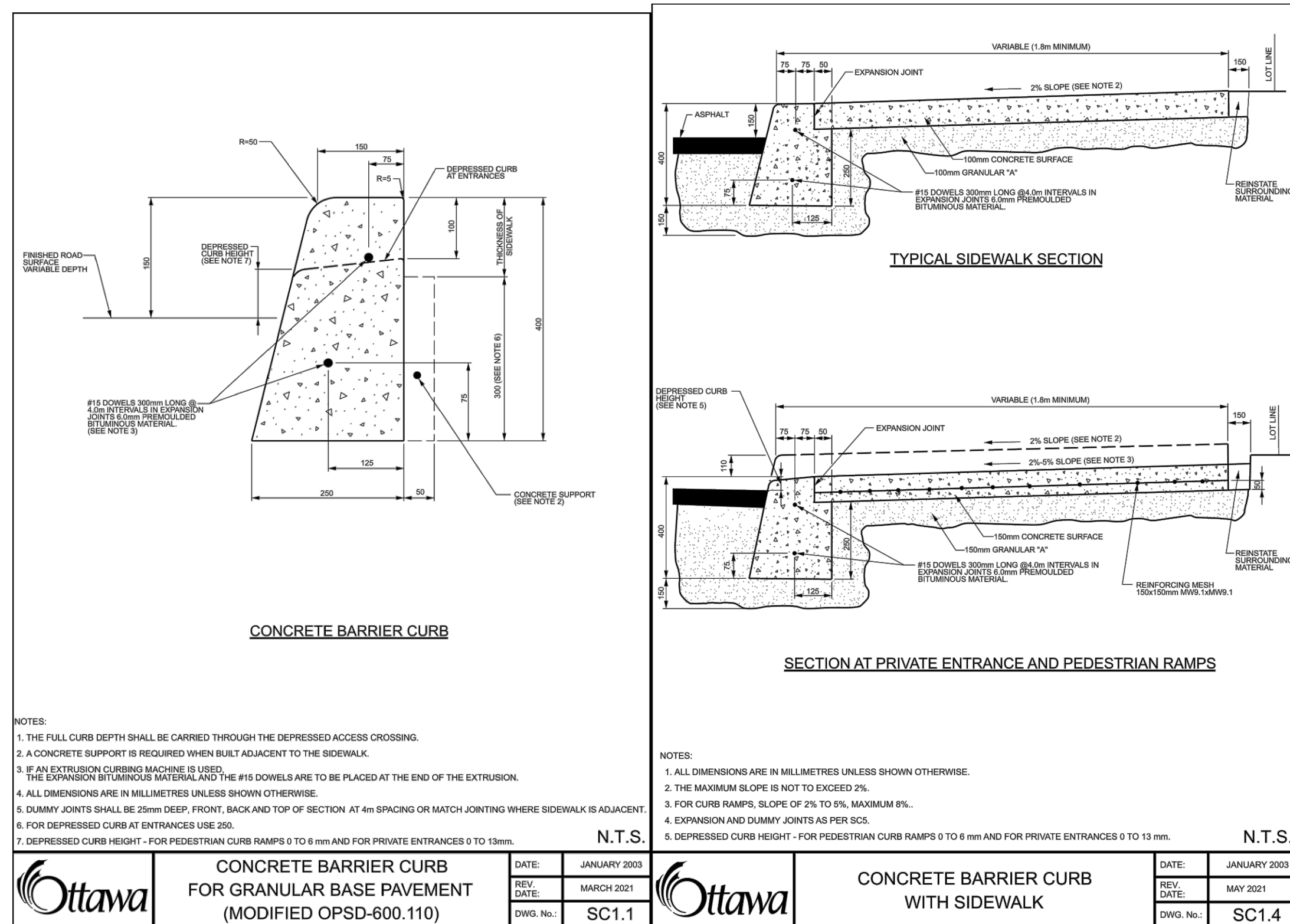
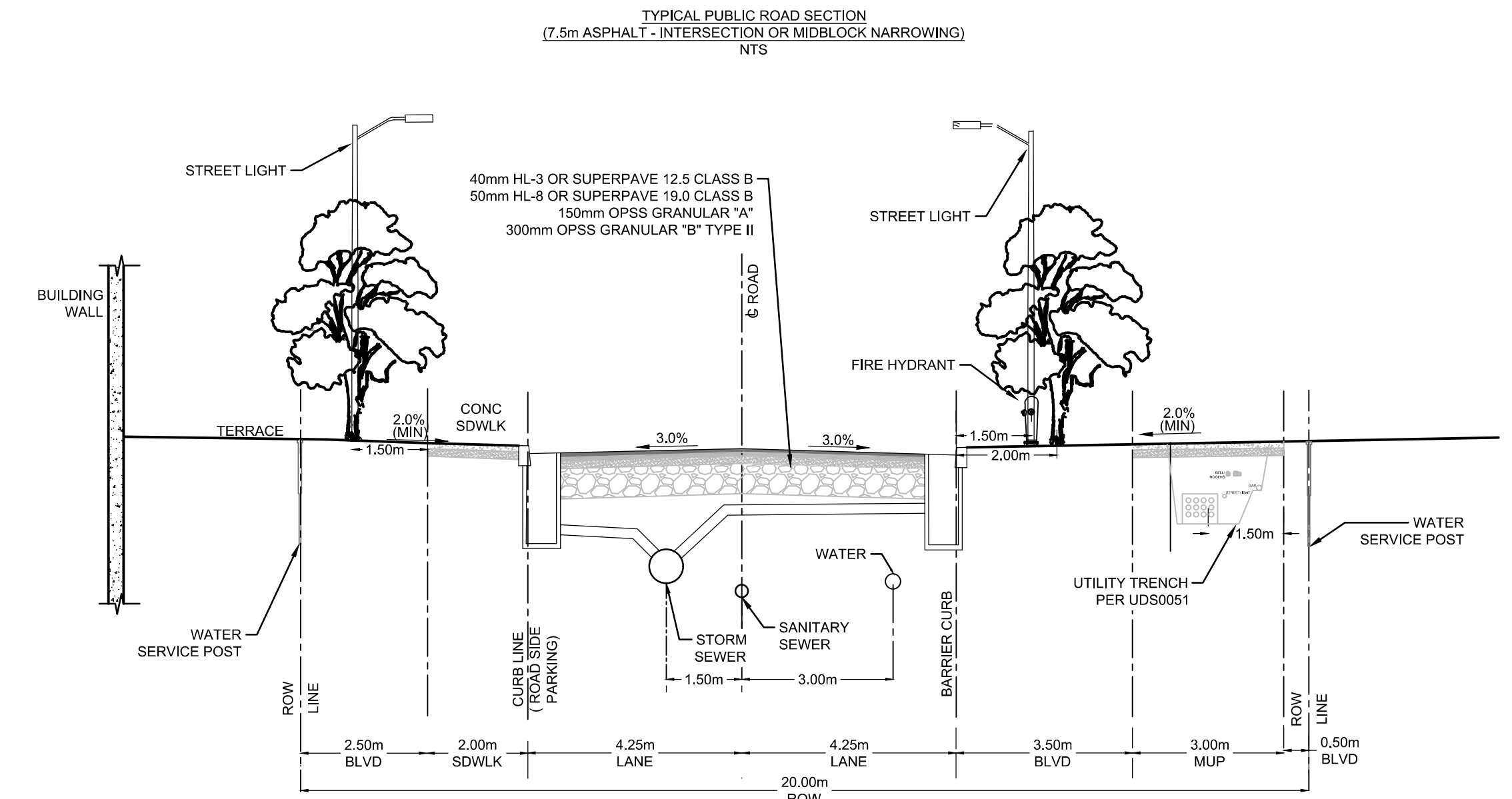
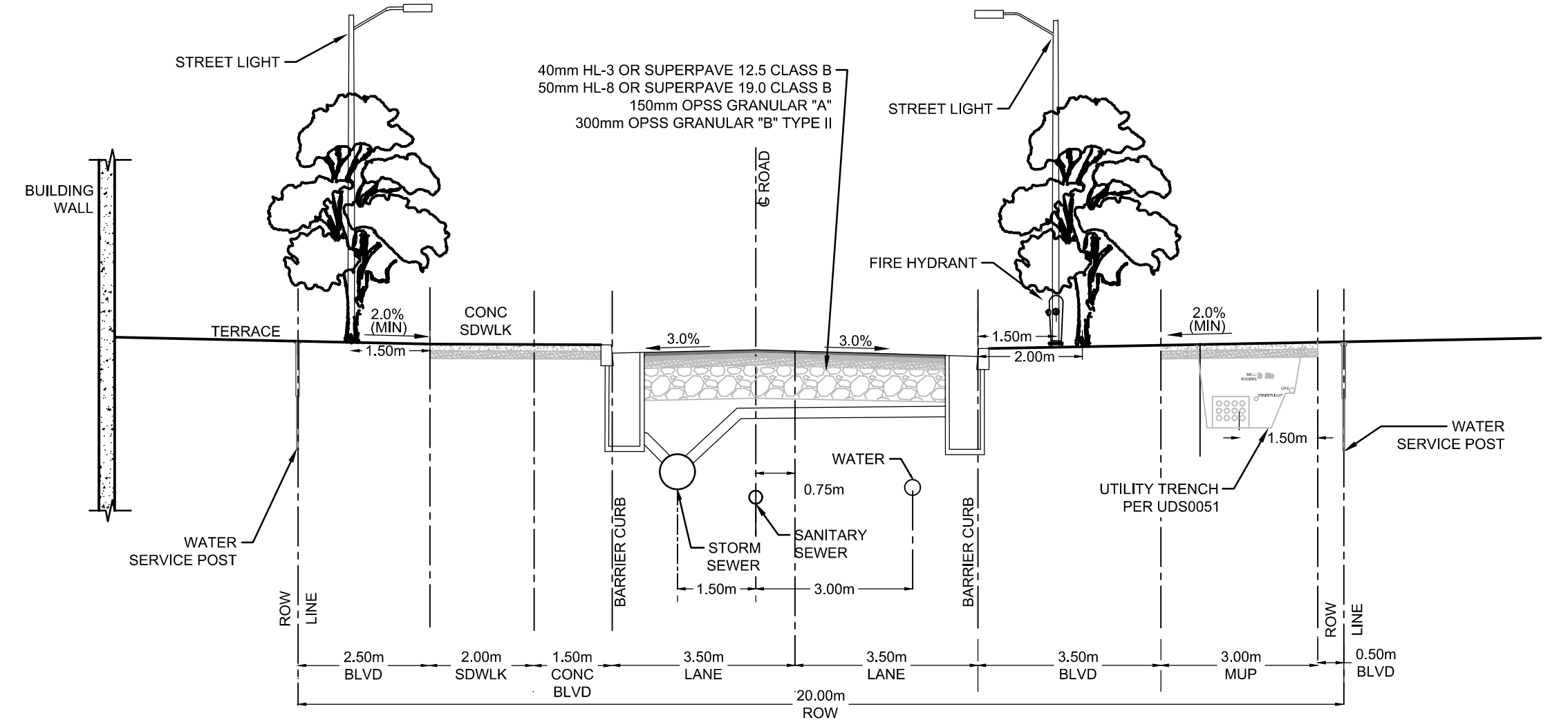
EROSION AND SEDIMENT CONTROL NOTES:

- THE OWNER AGREES TO PREPARE AND IMPLEMENT AN EROSION AND SEDIMENT CONTROL PLAN TO THE SATISFACTION OF THE CITY OF OTTAWA, APPROPRIATE TO THE SITE CONDITIONS, PRIOR TO UNDERTAKING ANY SITE ALTERATIONS (FILLING, GRADING, REMOVAL OF VEGETATION, ETC.) AND DURING ALL PHASES OF SITE PREPARATION AND CONSTRUCTION IN ACCORDANCE WITH THE CURRENT BEST MANAGEMENT PRACTICES FOR EROSION AND SEDIMENT CONTROL, SUCH AS BUT NOT LIMITED TO INSTALLING FILTER CLOTHS ACROSS MANHOLE/CATCHBASIN LIDS TO PREVENT SEDIMENTS FROM ENTERING STRUCTURES AND INSTALL AND MAINTAIN A LIGHT DUTY SILT FENCE BARRIER AS REQUIRED.
- THE CONTRACTOR SHALL PLACE FILTER CLOTH UNDER THE CATCHBASIN AND MANHOLE GRATES FOR THE DURATION OF CONSTRUCTION AND WILL REMAIN IN PLACE DURING ALL PHASES OF CONSTRUCTION.
- SILT FENCING FOR ENTIRE PERIMETER OF SITE, SHALL BE UTILIZED TO CONTROL EROSION FROM THE SITE DURING CONSTRUCTION.
- THE CONTRACTOR ACKNOWLEDGES THAT FAILURE TO IMPLEMENT EROSION AND SEDIMENT CONTROL MEASURES MAY BE SUBJECT TO PENALTIES IMPOSED BY ANY APPLICABLE REGULATORY AGENCY.

APPROVED

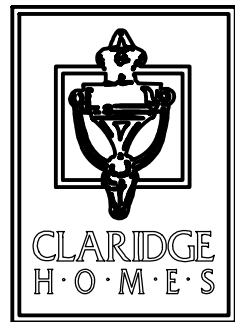
By Kersten Nitsche at 2:48 pm, May 12, 2025

KERSTEN NITSCHKE, MCIP RPP  
MANAGER (A), DEVELOPMENT REVIEW WEST  
PLANNING, DEVELOPMENT AND BUILDING SERVICES  
DEPARTMENT, CITY OF OTTAWA



NOTE:  
THE POSITION OF ALL POLE LINES, CONDUITS, WATERMANS, SEWERS AND OTHER UNDERGROUND AND OVERGROUND UTILITIES AND STRUCTURES IS NOT NECESSARILY SHOWN ON THE CONTRACT DRAWINGS, AND WHERE SHOWN, THE ACCURACY OF THE POSITION OF SUCH UTILITIES AND STRUCTURES IS NOT GUARANTEED. BEFORE STARTING WORK, DETERMINE THE EXACT LOCATION OF ALL SUCH UTILITIES AND STRUCTURES AND ASSUME ALL LIABILITY FOR DAMAGE TO THEM.

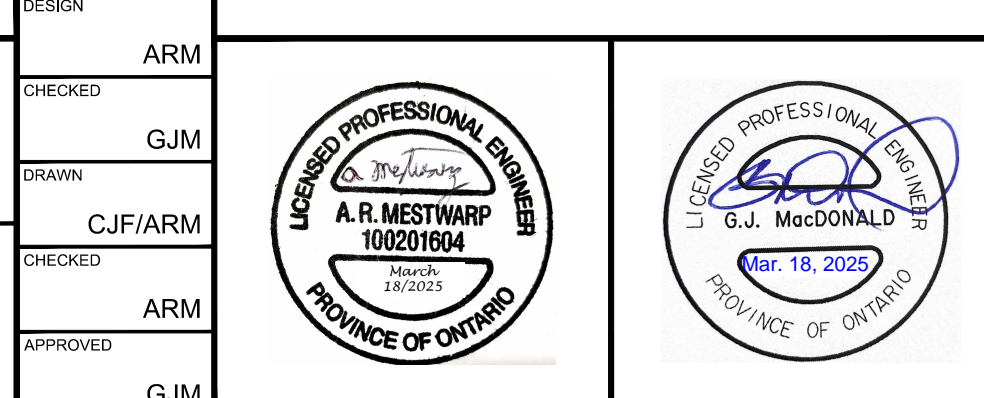
CLARIDGE HOMES  
505 PRESTON STREET,  
2ND FLOOR  
OTTAWA, ONTARIO  
K1S 4N7



NOT FOR  
CONSTRUCTION

No.	REVISION	DATE	BY
7.	REVISED PER CITY COMMENTS	MAR 18/2025	ARM
6.	REVISED PER CITY COMMENTS	NOV 29/2024	GJM
5.	REVISED PER CITY COMMENTS	SEPT 27/2024	GJM
4.	REVISED PER CITY COMMENTS	MAR 21/2024	GJM
3.	REISSUED PHASE 1 ONLY	OCT 27/2023	GJM
2.	REVISED AND ISSUED FOR CITY APPROVAL	DEC 09/2022	GJM
1.	ISSUED WITH SITE PLAN APPLICATION	SEPT 03/2021	JAG

DESIGN	ARM
CHECKED	GJM
DRAWN	CJF/ARM
APPROVED	GJM



NOVATECH  
Engineers, Planners & Landscape Architects  
Suite 200, 240 Michael Cowpland Drive  
Ottawa, Ontario, Canada K2M 1P6  
Telephone (613) 254-9643  
Facsimile (613) 254-5867  
Website www.novatech-eng.com

LOCATION  
1500 MERIVALE  
1500 MERIVALE, CITY OF OTTAWA  
DRAWING NAME  
NOTES AND DETAILS GRADING  
PLAN (PHASE 1)

PROJECT No.	121009
REV	REV#7
DRAWING No.	121009-NDGR1



APPROVED  
By Kersten Nitsche at 2:48 pm, May 12, 2025

Kersten Nitsche  
KERSTEN NITSCHKE, MCIP RPP  
MANAGER (A), DEVELOPMENT REVIEW WEST  
PLANNING, DEVELOPMENT AND BUILDING SERVICES  
DEPARTMENT, CITY OF OTTAWA

NORTH

KEY PLAN  
N.T.S.

#### EROSION AND SEDIMENT CONTROL NOTES:

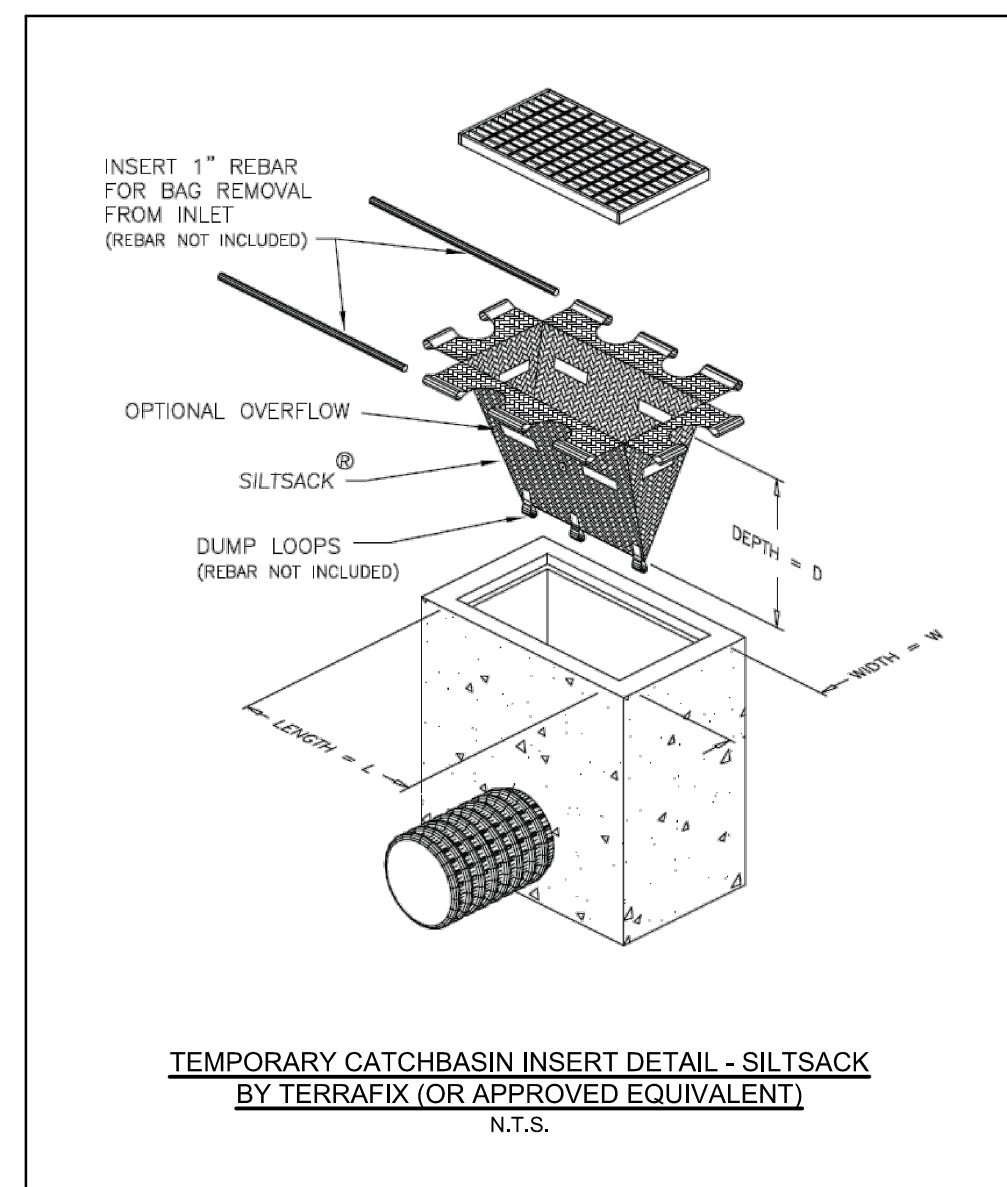
THE CONTRACTOR SHALL IMPLEMENT BEST MANAGEMENT PRACTICES, TO PROVIDE FOR PROTECTION OF THE AREA DRAINAGE SYSTEM AND THE RECEIVING WATERCOURSE, DURING CONSTRUCTION ACTIVITIES. THE CONTRACTOR ACKNOWLEDGES THAT FAILURE TO IMPLEMENT APPROPRIATE EROSION AND SEDIMENT CONTROL MEASURES MAY BE SUBJECT TO PENALTIES IMPOSED BY ANY APPLICABLE REGULATORY AGENCY.

- 1) THE OWNER AGREES TO PREPARE AND IMPLEMENT AN EROSION AND SEDIMENT CONTROL PLAN TO THE SATISFACTION OF THE CITY OF OTTAWA, APPROPRIATE TO THE SITE CONDITIONS, PRIOR TO UNDERTAKING ANY SITE ALTERATIONS (FILLING, GRADING, REMOVAL OF VEGETATION, ETC.) AND DURING ALL PHASES OF SITE PREPARATION AND CONSTRUCTION IN ACCORDANCE WITH THE CURRENT BEST MANAGEMENT PRACTICES FOR EROSION AND SEDIMENT CONTROL SUCH AS BUT NOT LIMITED TO INSTALLING FILTER CLOTHS ACROSS MANHOLE/CATCHBASIN LIDS TO PREVENT SEDIMENTS FROM ENTERING STRUCTURES AND INSTALL AND MAINTAIN A LIGHT DUTY SILT FENCE BARRIER AS REQUIRED.
- 2) THE CONTRACTOR SHALL PLACE FILTER BAGS UNDER THE CATCHBASIN AND MANHOLE GRATES FOR THE DURATION OF CONSTRUCTION AND WILL REMAIN IN PLACE DURING ALL PHASES OF CONSTRUCTION.
- 3) SILT FENCING FOR ENTIRE PERIMETER OF SITE, SHALL BE UTILIZED TO CONTROL EROSION FROM THE SITE DURING CONSTRUCTION.
- 4) THE CONTRACTOR ACKNOWLEDGES THAT FAILURE TO IMPLEMENT EROSION AND SEDIMENT CONTROL MEASURES MAY BE SUBJECT TO PENALTIES IMPOSED BY ANY APPLICABLE REGULATORY AGENCY.
- 5) PROVIDE MUD MATS AT ALL CONSTRUCTION ACCESS POINTS TO MINIMIZE SEDIMENT TRANSPORT OFFSITE.
- 6) EROSION AND SEDIMENT CONTROL MEASURES MAY BE MODIFIED IN THE FIELD AT THE DISCRETION OF THE CITY OF OTTAWA SITE INSPECTOR OR CONSERVATION AUTHORITY.

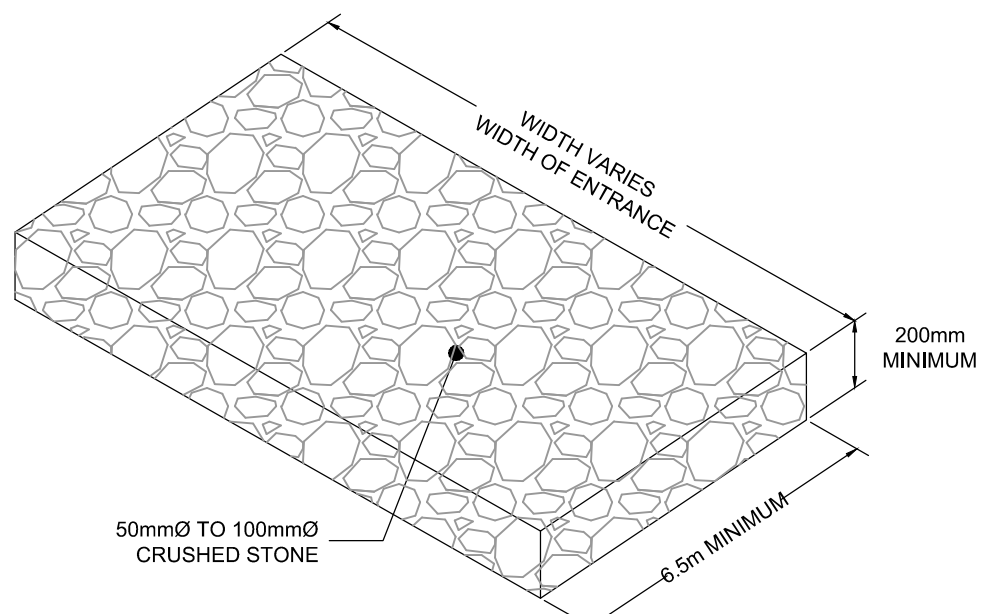
#### LEGEND

- PROPERTY LINE
- PROPOSED CURB
- DC PROPOSED DEPRESSED CURB
- FC PROPOSED FLUSH CURB
- PROPOSED RETAINING WALL C/W GUARD RAIL
- PROPOSED WALKWAY
- TACTILE WALKING SURFACE INDICATOR (TWSI) PER CITY DETAIL SC7.3
- PROPOSED CAP
- PROPOSED STORM SEWER AND MANHOLE
- PROPOSED CATCHBASIN MANHOLE
- PROPOSED CATCHBASIN
- PROPOSED LANDSCAPE DRAIN
- PROPOSED AREA DRAIN
- PROPOSED TRENCH DRAIN
- PROPOSED FILTER BAGS AT CATCHBASINS, CATCHBASIN MANHOLES AND TRENCHDRAINS
- PROPOSED MUD MAT
- LIGHT DUTY SILT FENCE (OPSD 219.110)
- PROPOSED BUILDING ENTRANCE
- BOREHOLE LOCATION (REFER TO GEOTECH REPORT)
- EXISTING STORM MANHOLE
- EXISTING CATCHBASIN
- EXISTING LIGHT STANDARD
- EXISTING FENCE

LIGHT DUTY SILT FENCE  
AS PER OPSD 219.110



TEMPORARY CATCHBASIN INSERT DETAIL - SILT SACK  
BY TERRAFIX (OR APPROVED EQUIVALENT)  
N.T.S.

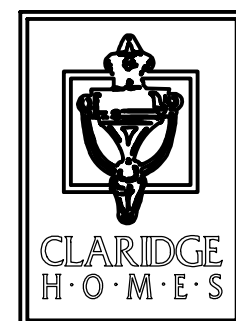


MUD MAT DETAIL  
NOT TO SCALE

REFER TO 121009-NDGP1 FOR ADDITIONAL NOTES & DETAILS

NOTE:  
THE POSITION OF ALL POLE LINES, CONDUITS,  
WATERMANS, SEWERS AND OTHER  
UNDERGROUND AND OVERGROUND UTILITIES AND  
STRUCTURES IS NOT NECESSARILY SHOWN ON  
THE CONTRACT DRAWINGS, AND WHERE SHOWN,  
THE ACCURACY OF THE POSITION OF SUCH  
UTILITIES AND STRUCTURES IS NOT GUARANTEED.  
BEFORE STARTING WORK, DETERMINE THE EXACT  
LOCATION OF ALL SUCH UTILITIES AND  
STRUCTURES AND ASSUME ALL LIABILITY FOR  
DAMAGE TO THEM.

CLARIDGE HOMES  
CLARIDGE HOMES  
505 PRESTON STREET,  
2ND FLOOR  
OTTAWA, ONTARIO  
K1S 4N7

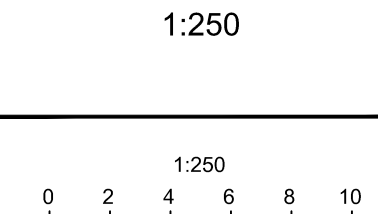


NOT FOR  
CONSTRUCTION

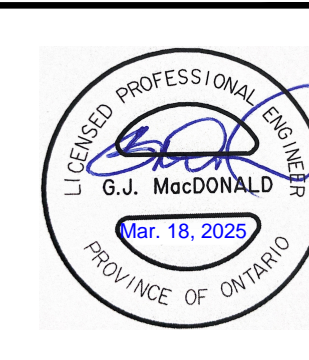
No.	REVISION	DATE	BY
7.	REVISED PER CITY COMMENTS	MAR 18/2025	ARM
6.	REVISED PER CITY COMMENTS	NOV 29/2024	GJM
5.	REVISED PER CITY COMMENTS	SEPT 27/2024	GJM
4.	REVISED PER CITY COMMENTS	MAR 21/2024	GJM
3.	REISSUED PHASE 1 ONLY	OCT 27/2023	GJM
2.	REVISED AND ISSUED FOR CITY APPROVAL	DEC 09/2022	GJM
1.	ISSUED WITH SITE PLAN APPLICATION	SEPT 03/2021	JAG

#### SCALE

1:250



DESIGN	ARM
CHECKED	GJM
DRAWN	CJF/ARM
CHECKED	ARM
APPROVED	GJM



**NOVATECH**  
Engineers, Planners & Landscape Architects  
Suite 200, 240 Michael Cowpland Drive  
Ottawa, Ontario, Canada K2M 1P6  
Telephone (613) 254-9643  
Facsimile (613) 254-5867  
Website www.novatech-eng.com

LOCATION  
1500 MERIVALE  
1500 MERIVALE, CITY OF OTTAWA  
DRAWING NAME  
EROSION AND SEDIMENT  
CONTROL (PHASE 1)

PROJECT No.	121009
REV	REV#7
DRAWING No.	121009-ESC1

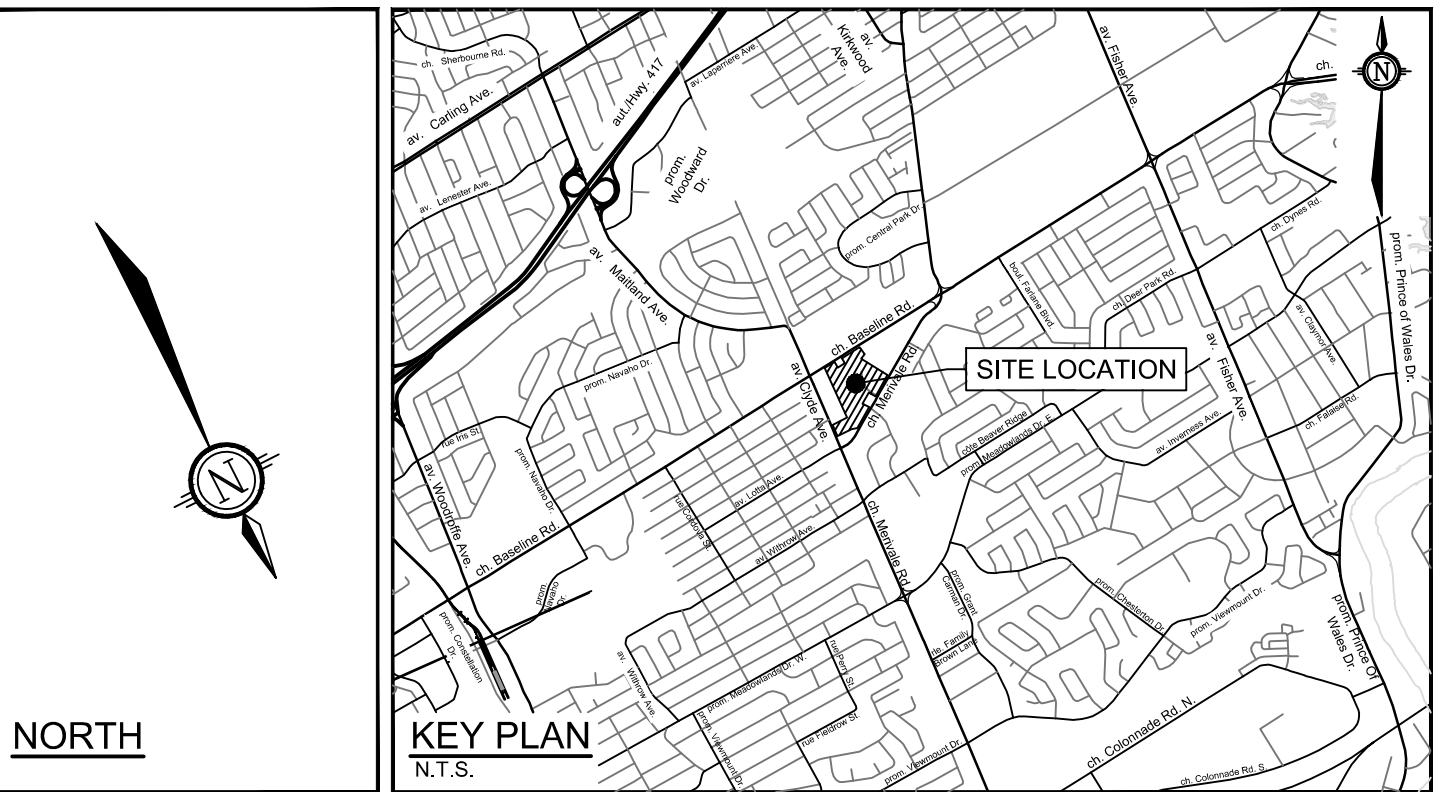
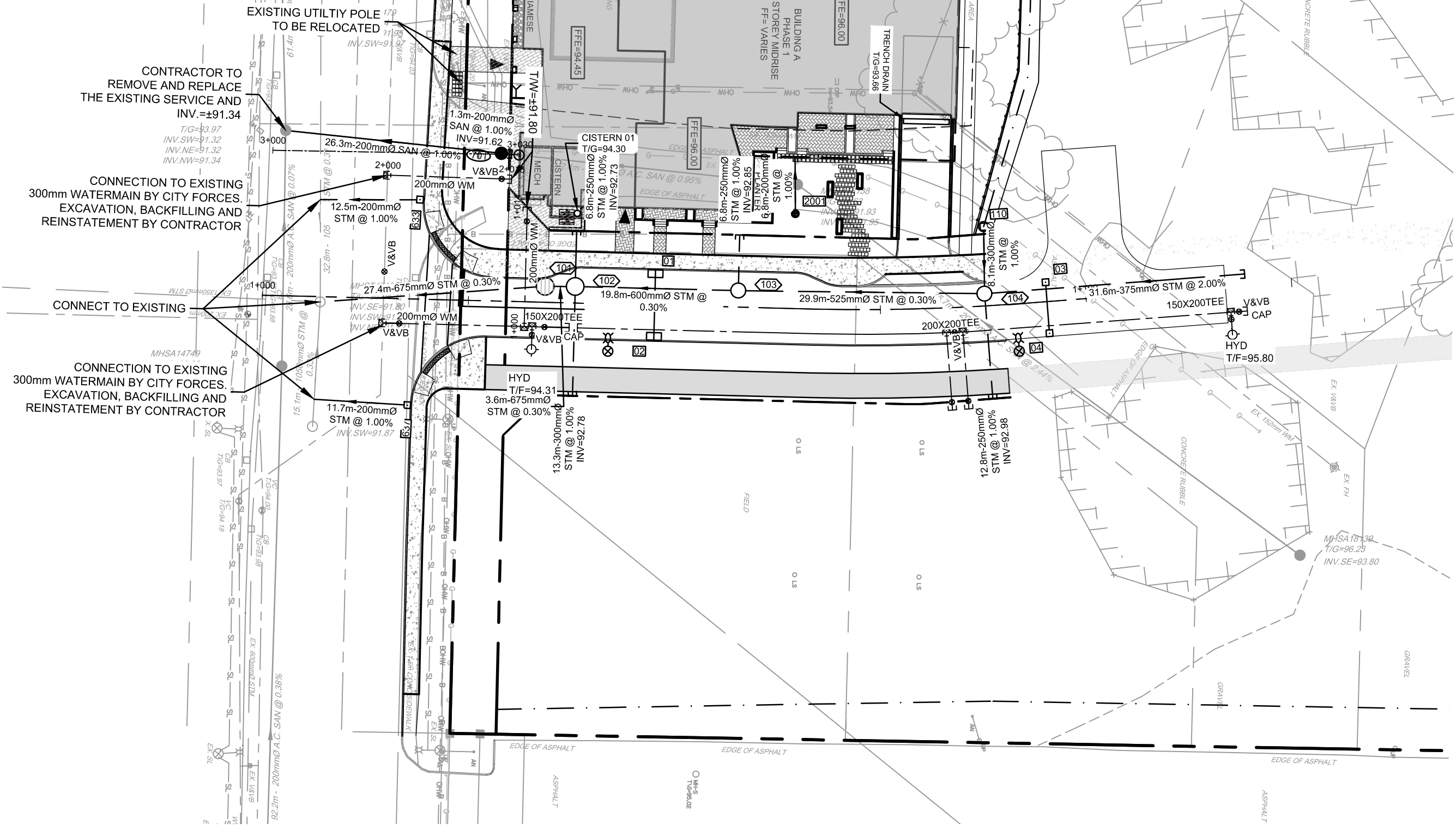






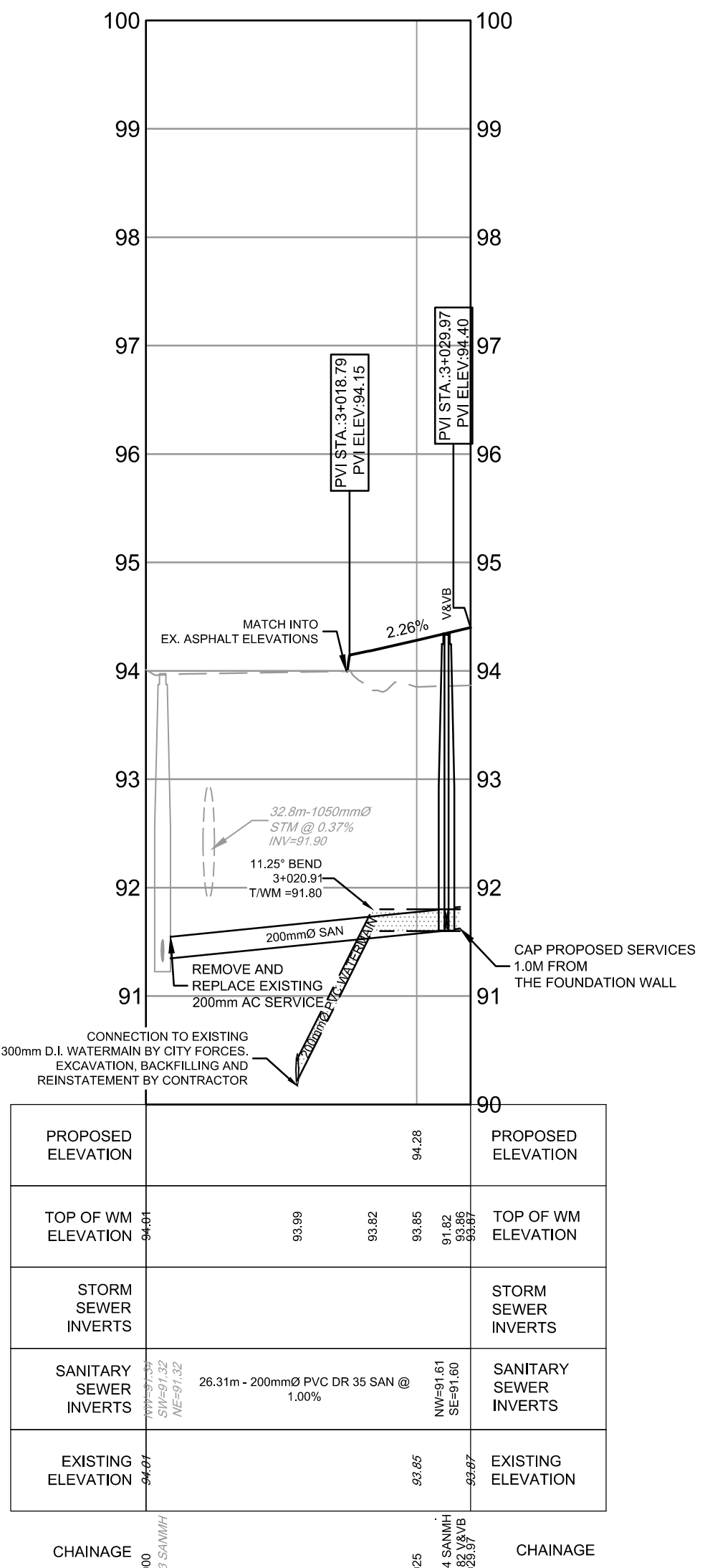
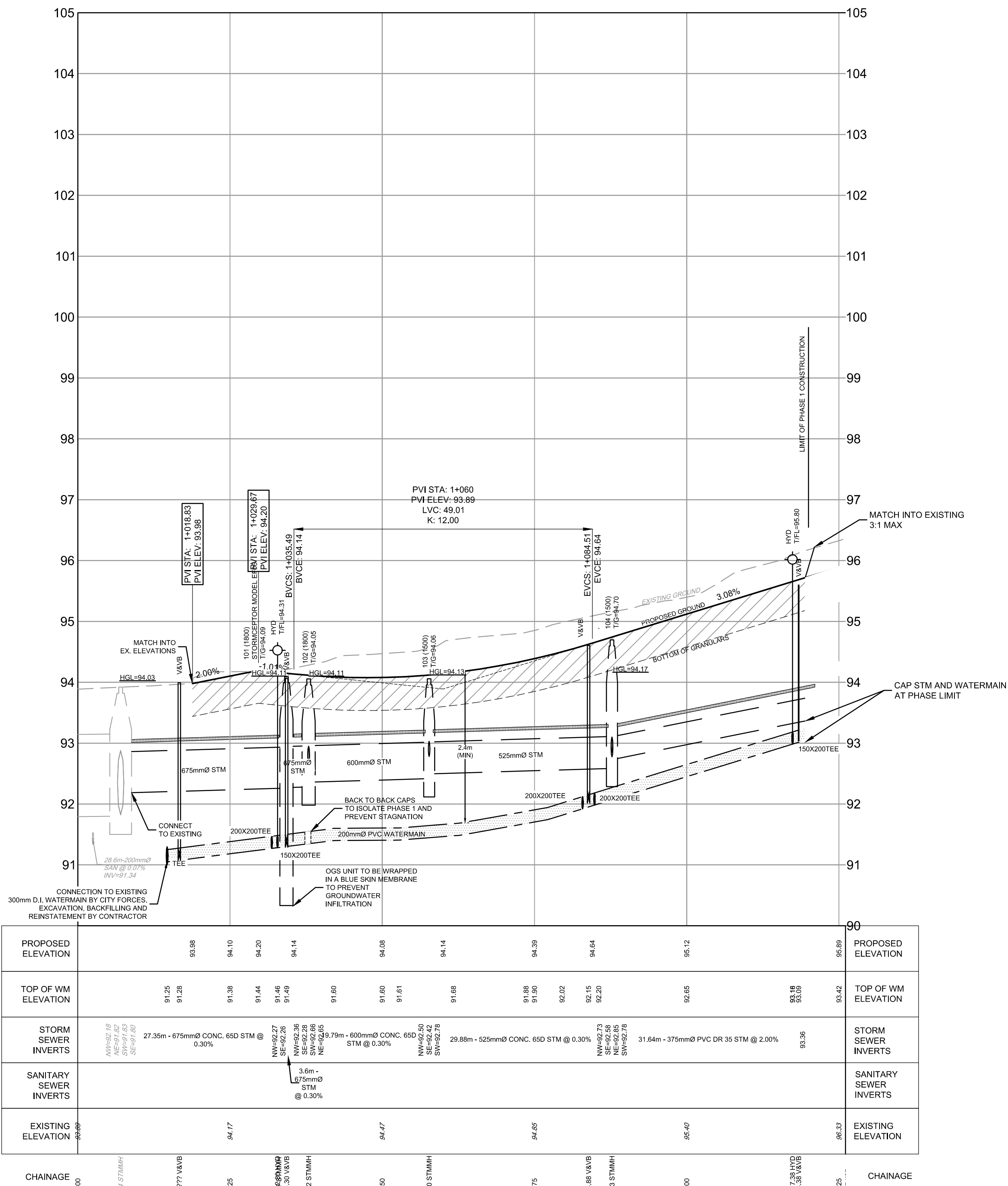






**APPROVED**  
By Kersten Nitsche at 2:49 pm, May 12, 2025

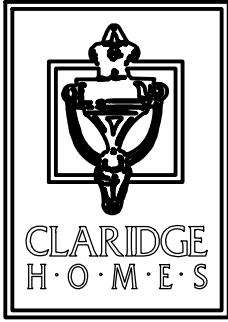
**KERSTEN NITSCHKE, MCIP RPP**  
MANAGER (A), DEVELOPMENT REVIEW WEST  
PLANNING, DEVELOPMENT AND BUILDING SERVICES  
DEPARTMENT, CITY OF OTTAWA



REFER TO 121009-NDGP1 FOR ADDITIONAL NOTES & DETAILS

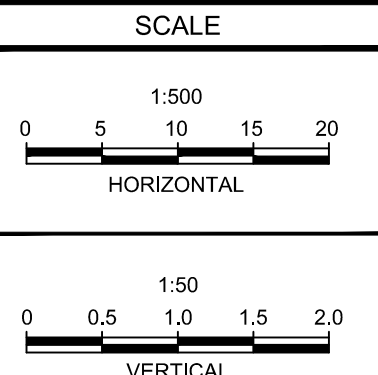
NOTE:  
THE POSITION OF ALL POLE LINES, CONDUITS,  
WATERMAINS, SEWERS AND OTHER  
UNDERGROUND AND OVERGROUND UTILITIES AND  
STRUCTURES IS NOT NECESSARILY SHOWN ON  
THE CONTRACT DRAWINGS, AND WHERE SHOWN,  
THE ACCURACY OF THE POSITION OF SUCH  
UTILITIES AND STRUCTURES IS NOT GUARANTEED.  
BEFORE STARTING WORK, DETERMINE THE EXACT  
LOCATION OF ALL SUCH UTILITIES AND  
STRUCTURES AND ASSUME ALL LIABILITY FOR  
DAMAGE TO THEM.

**CLARIDGE HOMES**  
CLARIDGE HOMES  
505 PRESTON STREET,  
2ND FLOOR  
OTTAWA, ONTARIO  
K1S 4N7

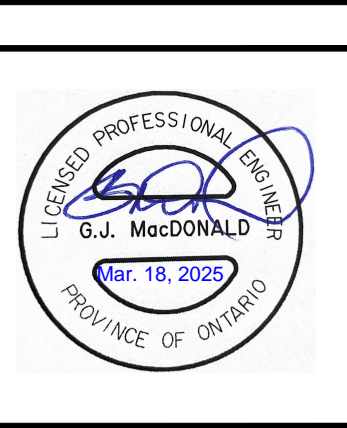
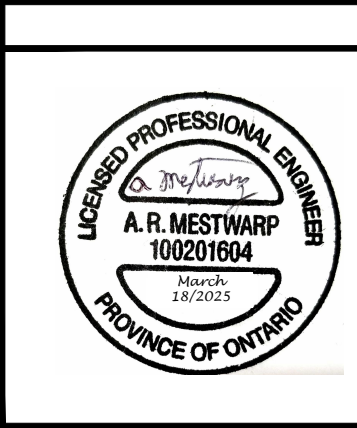


**NOT FOR  
CONSTRUCTION**

No.	REVISION	DATE	BY
7.	REVISED PER CITY COMMENTS	MAR 18/2025	ARM
6.	REVISED PER CITY COMMENTS	NOV 29/2024	GJM
5.	REVISED PER CITY COMMENTS	SEPT 27/2024	GJM
4.	REVISED PER CITY COMMENTS	MAR 21/2024	GJM
3.	REISSUED PHASE 1 ONLY	OCT 27/2023	GJM
2.	REVISED AND ISSUED FOR CITY APPROVAL	DEC 09/2022	GJM
1.	ISSUED WITH SITE PLAN APPLICATION	SEPT 03/2021	JAG



DESIGN  
CHECKED  
DRAWN  
CJF/ARM  
CHECKED  
APPROVED  
GJM



**NOVATECH**  
Engineers, Planners & Landscape Architects  
Suite 200, 240 Michael Cowpland Drive  
Ottawa, Ontario, Canada K2M 1P6  
Telephone (613) 254-9643  
Facsimile (613) 254-5867  
Website www.novatech-eng.com

LOCATION  
1500 MERIVALE  
1500 MERIVALE, CITY OF OTTAWA  
DRAWING NAME  
PLAN AND PROFILE  
STREET 1  
1+000.00 - 1+125.00 &  
SANITARY SERVICE

PROJECT No. 121009  
REV 121009-PR1  
REV#7  
DRAWING No. 121009-PR1