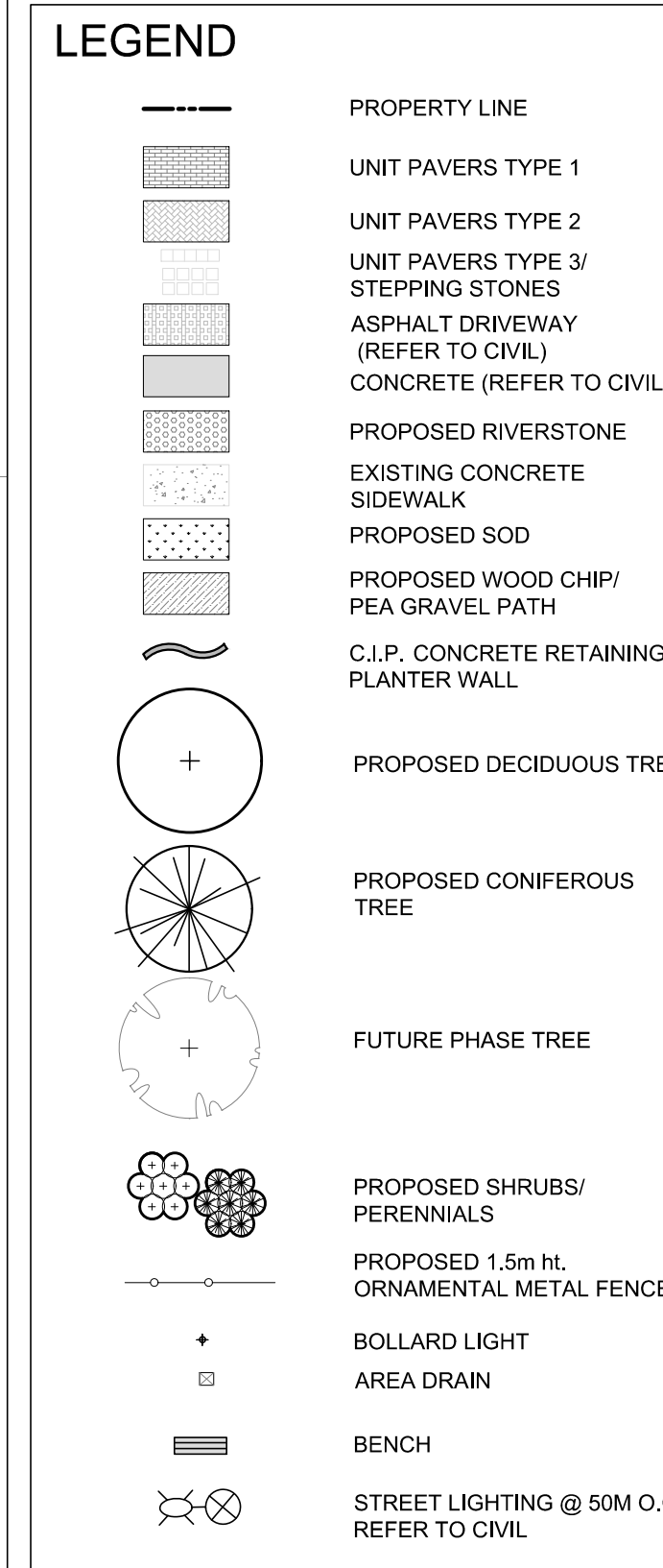


### PROPOSED PLANT LIST (L.2 PLANT LIST)

| KEY           | QTY | BOTANICAL NAME                    | COMMON NAME              | SIZE      | CONDITION | REMARKS      |
|---------------|-----|-----------------------------------|--------------------------|-----------|-----------|--------------|
| <b>TREES</b>  |     |                                   |                          |           |           |              |
| AF            | 6   | <i>Acer Freemanii</i>             | Freemania Maple          | 60mm ø    | B&B       |              |
| AG            | 3   | <i>Acer ginnala</i>               | Amur Maple               | 60mm ø    | B&B       |              |
| AS            | 4   | <i>Acer saccharum</i>             | Sugar Maple              | 60mm ø    | B&B       |              |
| GB            | 2   | <i>Ginkgo biloba</i>              | Ginkgo                   | 60mm ø    | B&B       |              |
| GT            | 1   | <i>Glodisia triacanthos</i>       | Honey Locust             | 60mm ø    | B&B       |              |
| Ma            | 1   | <i>Malus</i>                      | Crabapple                | 60mm ø    | B&B       |              |
| SR            | 2   | <i>Syringa reticulata</i>         | Japanese Tree Lilac      | 60mm ø    | B&B       |              |
| SB            | 2   | <i>Amelanchier</i>                | Serviceberry             | 60mm ø    | B&B       |              |
| <b>SHRUBS</b> |     |                                   |                          |           |           |              |
| AH            | 9   | <i>Hydrangea arborescens</i>      | Annabelle Hydrangea      | 600mm pot | Potted    | 1000 mm o.c. |
| CB            | 8   | <i>Symphoricarpos orbiculatus</i> | Corall Berry             | 600mm ht. | Potted    | 1000 mm o.c. |
| FS            | 27  | <i>Rhus aromatica 'Gro-Low'</i>   | Fragrant Sumac 'Gro-Low' | 600mm pot | Potted    | 1000 mm o.c. |
| SA            | 8   | <i>Symphoricarpos albus</i>       | Snowberry                | 600mm pot | Potted    | 1000 mm o.c. |



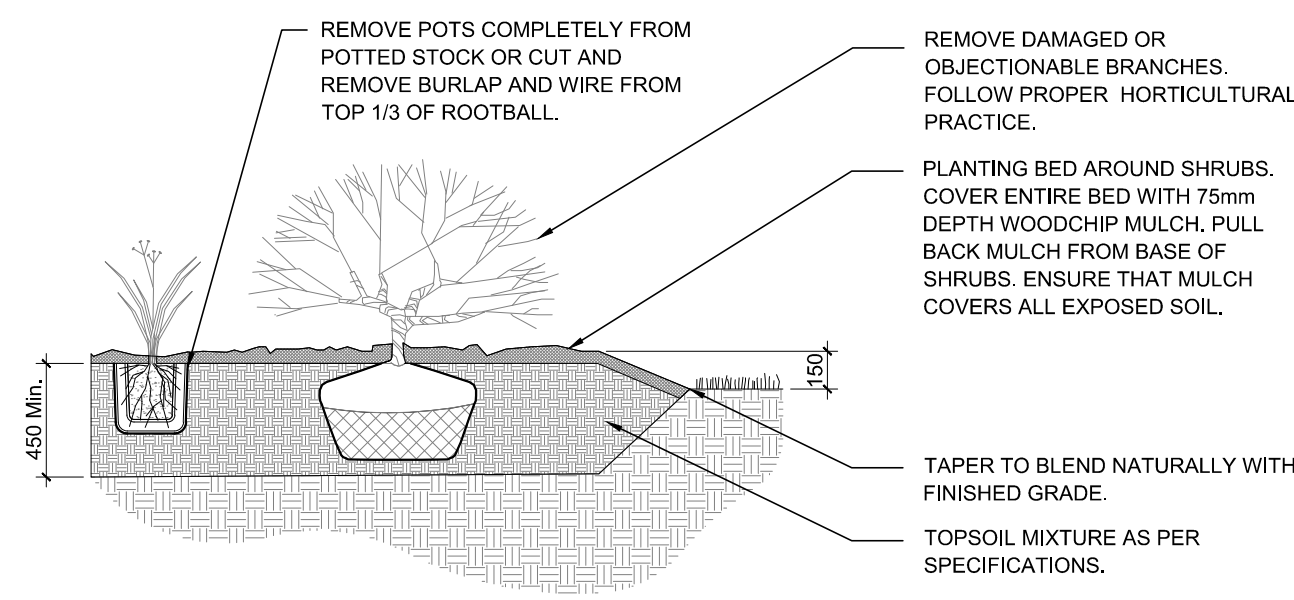
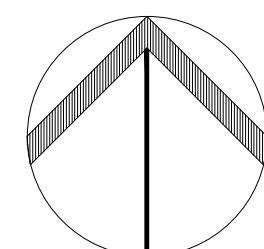
#### GENERAL NOTES:

- It is the responsibility of the appropriate contractor or official to report any errors, omissions or discrepancies on this plan with actual site conditions to the Landscape Architect before proceeding with construction.
- The contractor is to notify all utility companies and authorities prior to any excavation and ascertain locations of underground services.
- The contractor is to reinstale all areas and items damaged as a result of construction activity.
- The contractor is to comply with all pertinent codes and by-laws.
- The contractor is to maintain a positive surface run-off throughout the entire construction period.
- The Landscape Architect is not responsible for subsurface conditions.
- The contractor is to identify all existing trees to remain on site with the Landscape Architect prior to construction.
- The contractor is to stake the proposed location of all plant material in conjunction with the Landscape Architect prior to excavation.
- Minimum distances for selected deciduous trees are as follows:
  - Building Foundations 7.5m
  - Sidewalks 1.5m
  - Public Streets 2.5m
  - Underground Infrastructure 2.0m
- All trees within 1m of underground utility trenches are to be excavated by hand.
- Remove all protective wrapping from tree trunks after installation.
- Staking of trees shall only be performed if necessary.
- Ensure that mulch is pulled back a min. distance of 75mm from base of tree trunk.

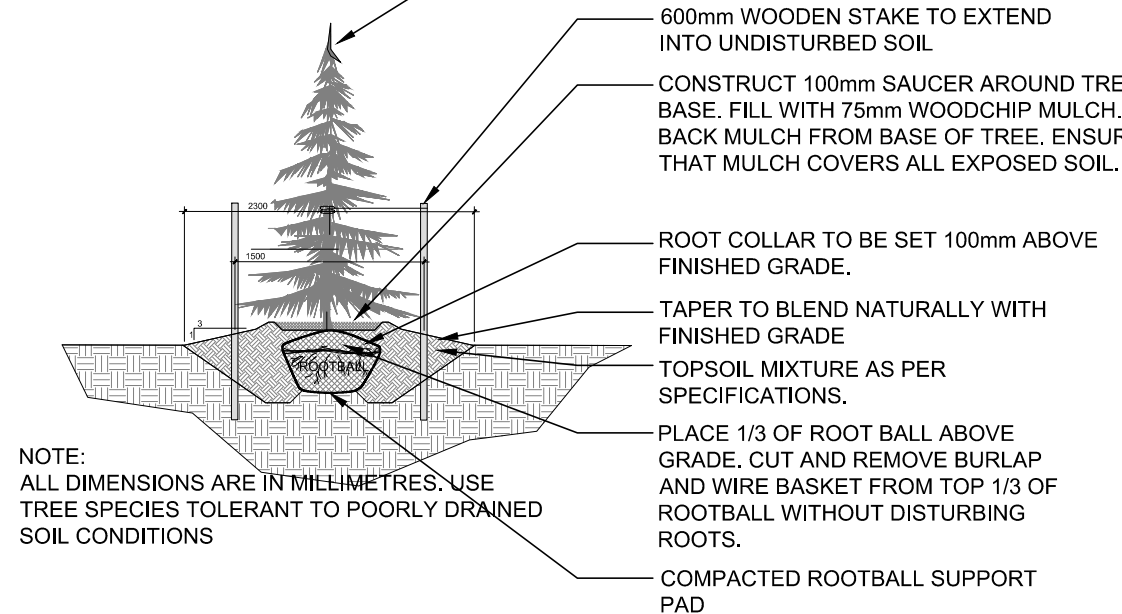
#### NOTES:

- ALL DIMENSIONS ARE IN MILLIMETRES.
- USE TREE SPECIES TOLERANT TO POORLY DRAINED SOIL CONDITIONS.
- REMOVE DAMAGED OR OBJECTIONABLE BRANCHES. FOLLOW PROPER HORTICULTURAL PRACTICE. DO NOT PRUNE LEADER.
- TREE WRAP APPLIED SPIRALLY FROM GROUND UP TO HEIGHT OF SECOND BRANCHES.
- 2 STAKES MIN 2400mm LONG WITH NO. 12 GALVANIZED WIRE ENCASED IN 12mm DIAMETER RUBBER HOSE ALLOWING SLACK IN GALVANIZED WIRE. REMOVE STAKES AFTER ONE YEAR. STAKE BEYOND EDGE OF ROOTBALL.
- CONSTRUCT 100mm SAUCER AROUND TREE BASE. FILL WITH 75mm WOODCHIP MULCH. PULL BACK MULCH FROM BASE OF TREE. ENSURE THAT MULCH COVERS ALL EXPOSED SOIL.
- ROOT COLLAR TO BE SET 100mm ABOVE FINISHED GRADE.
- TAPER TO BLEND NATURALLY WITH FINISH GRADE.
- TOPSOIL MIXTURE (SEE SPECIFICATIONS)
- PLACE 1/3 OF ROOT BALL ABOVE GRADE. CUT AND REMOVE BURLAP AND WIRE BASKET FROM TOP 1/3 OF ROOTBALL WITHOUT DISTURBING ROOTS.
- COMPACTED ROOTBALL SUPPORT PAD

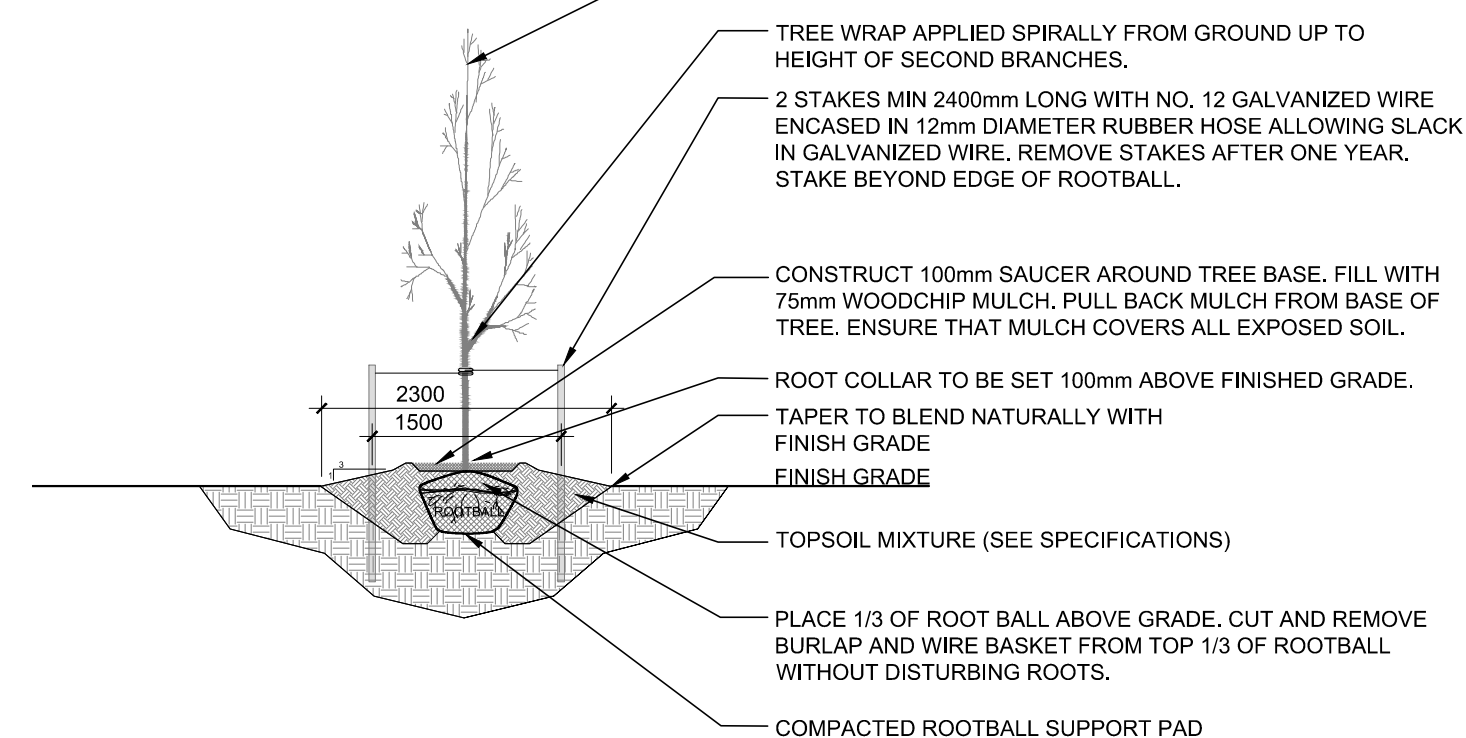
1 LANDSCAPE PLAN  
L.1 SCALE 1:200



4 SHRUB AND PERENNIAL PLANTING  
L.1 N.T.S.

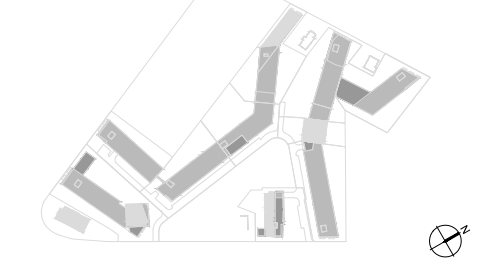


3 CONIFEROUS TREE PLANTING  
L.1 N.T.S.



2 DECIDUOUS TREE PLANTING  
L.1 N.T.S.

#### KEY PLAN:



| Nº | DESCRIPTION             | BY | DATE       |
|----|-------------------------|----|------------|
| 4  | ISSUED FOR COORDINATION | SL | 10/24/2023 |
| 3  | ISSUED FOR COORDINATION | SL | 06/21/2023 |
| 2  | ISSUED FOR COORDINATION | SL | 11/25/2022 |
| 1  | ISSUED FOR COORDINATION | LC | 07/07/2021 |

#### THE GENERAL CONTRACTOR :

- SHALL BE RESPONSIBLE FOR VERIFYING ALL DIMENSIONS ON SITE TO ENSURE COMPLIANCE WITH THE DIMENSIONS GIVEN ON THE DRAWINGS.
- SHALL BE RESPONSIBLE TO IMMEDIATELY SUBMIT A REPORT TO THE ARCHITECT OR ENGINEER OUTLINING ANY INACCURACIES.
- SHALL NOT TAKE SCALED MEASUREMENTS OFF THE DRAWINGS.
- ANY INDIVIDUAL OR FIRM THAT HAVE RECEIVED ELECTRONIC DOCUMENT SHALL USE THEM AT THEIR OWN RISK. ONLY ORIGINAL DRAWINGS, STAMPED BY THE ARCHITECT, MAY BE USED FOR CONSTRUCTION.

#### SEAL

PROJECT:  
**1500 MERIVALE**

DRAWING TITLE:  
**LANDSCAPE PLAN - PHASE 1**

|           |    |           |           |
|-----------|----|-----------|-----------|
| DESIGN:   | JL | APPROVED: | JL        |
| DRAWN:    | SL | DATE:     | NOV. 2022 |
| VERIFIED: | JL | SCALE:    | AS NOTED  |

PROJECT Nº: **21CLG2145** DRAWING Nº: **L.2**