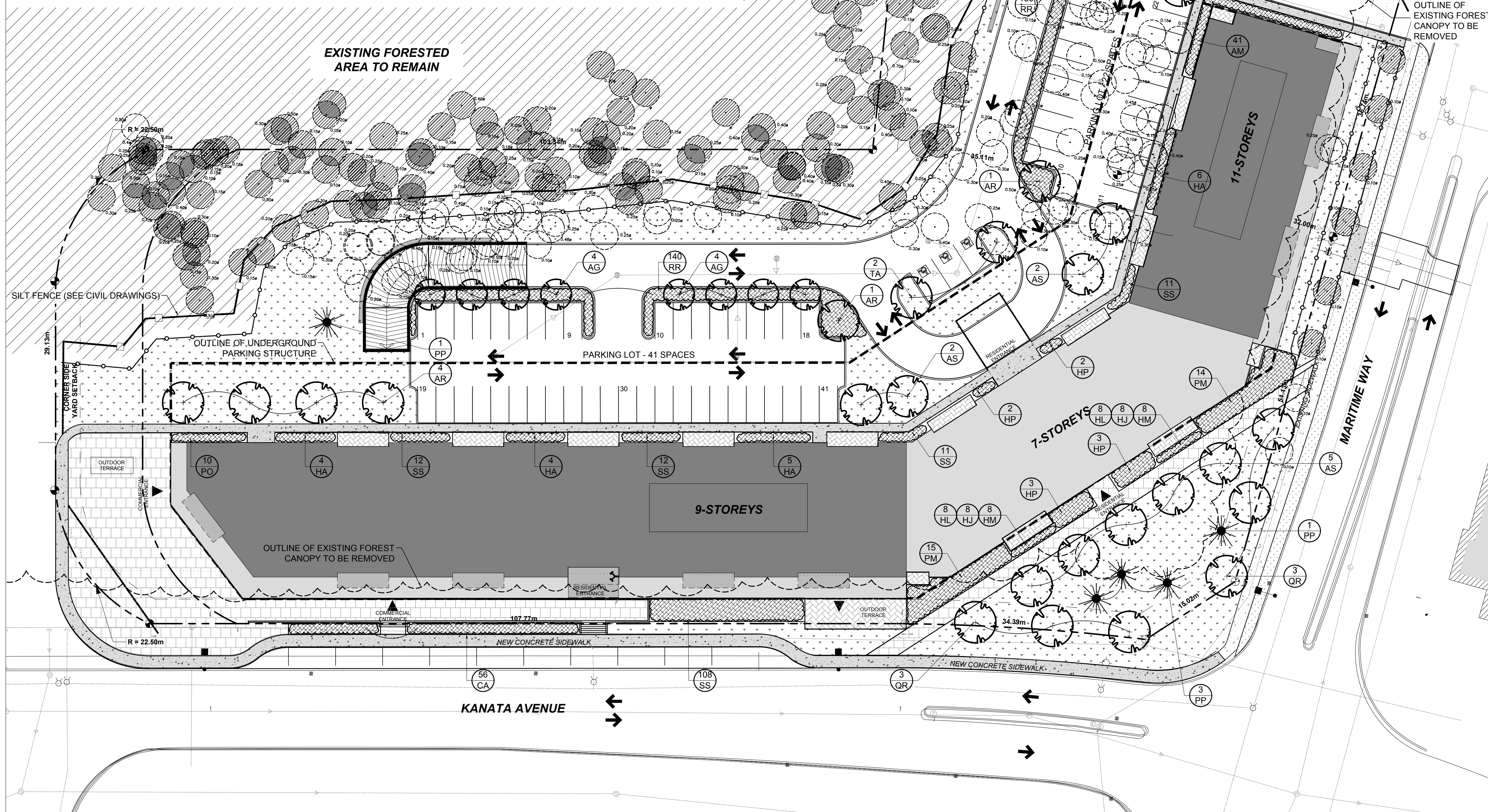


PROPOSED PLANT LIST						
KEY	QTY	BOTANICAL NAME	COMMON NAME	SIZE	CONDITION	SPACING
DECIDUOUS TREES						
AG	4	<i>Amelanchier x grandiflora</i> 'Robin Hill'	Robin Hill Service Berry	60mm dia.	B&B	AS SHOWN
AR	8	<i>Acer rubrum</i> 'Autumn Spire'	Autumn Spire Red Maple	60mm dia.	B&B	AS SHOWN
AS	9	<i>Acer saccharum</i> 'Green Mountain'	Green Mountain Sugar Maple	60mm dia.	B&B	AS SHOWN
TA	2	<i>Tilia americana</i> 'Redmond'	Redmond Linden	60mm dia.	B&B	AS SHOWN
QR	6	<i>Quercus rubra</i>	Red Oak	60mm dia.	B&B	AS SHOWN
CONIFEROUS TREES						
PP	5	<i>Picea pungens</i>	Colorado Blue Spruce	2000mm HT.	B&B	AS SHOWN
DECIDUOUS SHRUBS						
AM	41	<i>Aronia melanocarpa</i> 'Autumn Magic'	Autumn Magic Chokeberry	600mm HT.	Potted	800mm O.C.
HA	19	<i>Hydrangea arborescens</i> 'Incrediball'	Incrediball Hydrangea	1000mm HT.	Potted	2000mm O.C.
HP	10	<i>Hydrangea paniculata</i> 'Little Lime'	Little Lime Hydrangea	900mm HT.	Potted	2000mm O.C.
PO	10	<i>Physocarpus opulifolius</i> 'Little Devil'	Little Devil Ninebark	800mm HT.	Potted	1000mm O.C.
RR	270	<i>Rosa rugosa</i>	Rugosa Rose	800mm HT.	Potted	800mm O.C.
SS	154	<i>Sorbia sorbifolia</i> 'Sem'	Sem False Spiraea	600mm HT.	Potted	800mm O.C.
CONIFEROUS SHRUBS						
PM	29	<i>Pinus mugo</i> 'Mughus'	Mugo Pine	600mm Spread	Potted	1500mm O.C.
PERENNIALS/ GRASSES						
CA	56	<i>Calamagrostis x acutiflora</i> 'Karl Foerster'	Karl Foerster Grass	250mm pot	Potted	800mm O.C.
HL	16	<i>Hemerocallis ilioasphodelus</i>	Yellow Daylily	150mm pot	Potted	400mm O.C.
HJ	16	<i>Hemerocallis</i> 'Joan Senior'	Joan Senior Daylily	150mm pot	Potted	400mm O.C.
HM	16	<i>Hemerocallis</i> 'Moses Fire'	Moses Fire Daylily	150mm pot	Potted	400mm O.C.



- GENERAL NOTES:**
- It is the responsibility of the appropriate contractor or official to report any errors, omissions or discrepancies on this plan with actual site conditions to the Landscape Architect before proceeding with construction.
 - The contractor is to notify all utility companies and authorities prior to any excavation and ascertain locations of underground services.
 - The contractor is to reinstate all areas and items damaged as a result of construction activity.
 - The contractor is to comply with all pertinent codes and by-laws.
 - The contractor is to maintain a positive surface run-off throughout the entire construction period.
 - The Landscape Architect is not responsible for subsurface conditions.
 - The contractor is to identify all existing trees to remain on site with the Landscape Architect prior to construction.
 - The contractor is to stake the proposed location of all plant material in conjunction with the Landscape Architect prior to excavation.
 - Minimum distances for selected deciduous trees are as follows:
 - Building Foundations 7.5m
 - Sidewalks 1.5m
 - Public Streets 2.5m
 - Underground Infrastructure 2.0m
 - All trees within 1m of underground utility trenches are to be excavated by hand.
 - Remove all protective wrapping from tree trunks after installation.
 - Staking of trees shall only be performed if necessary.
 - Ensure that mulch is pulled back a min. distance of 75mm from base of tree trunk.



CONSULTANTS

ARCHITECTS: ROSSMAN ARCHITECTURE
115 St. Joseph Boulevard, Gatineau (Quebec) J8Y 2A5
Tel: (819) 850-1956

SURVEYORS: ANNIS, O'SULLIVAN, VOLLEBECK LTD.
115 St. Joseph Boulevard, Gatineau (Quebec) J8Y 2A5
Tel: (819) 850-1956

CIVIL ENGINEERS: EQUIPE LAURENCE
115 St. Joseph Boulevard, Gatineau (Quebec) J8Y 2A5
Tel: (819) 850-1956

- LEGEND**
- PROPOSED PRECAST CONCRETE PAVERS - TYPE I
 - PROPOSED PRECAST CONCRETE PAVERS - TYPE II
 - PROPOSED CONCRETE
 - EXISTING SIDEWALK TO REMAIN
 - PROPOSED SOD CW 150mm OF TOPSOIL
 - EXISTING GRASS TO REMAIN
 - EXISTING FOREST CANOPY TO REMAIN
 - PROPOSED ORNAMENTAL SHRUBS, PERENNIALS & GRASSES
 - PROPOSED DECIDUOUS TREE
 - PROPOSED CONIFEROUS TREE
 - EXISTING TREE TO REMAIN
 - EXISTING TREE TO BE REMOVED
 - TREE PROTECTION FENCING
 - PROPERTY LINE

3	ISSUED FOR SITE PLAN APPROVAL R1	09/27/2021	SS	JL
2	ISSUED FOR SITE PLAN APPROVAL	09/24/2021	SS	JL
1	ISSUED FOR SPA COORDINATION	09/22/2021	SS	JL
No.	Issue	Date	DR	CK

JAMES B. LENNOX & ASSOCIATES INC.
LANDSCAPE ARCHITECTS
3332 CARLING AVE. OTTAWA, ONTARIO K2H 5A5
Tel: (613) 722-5168 Fax: (613) 722-5192

PROJECT

EMD KANATA
KANATA TOWN CENTRE (PARCELS 2 & 3)
KANATA AVE / MARITIME WAY

DRAWING

LANDSCAPE PLAN

STAMP

SCALE: AS SHOWN
START DATE: AUGUST 2021
PROJECT NO.: 21-MIS-2192

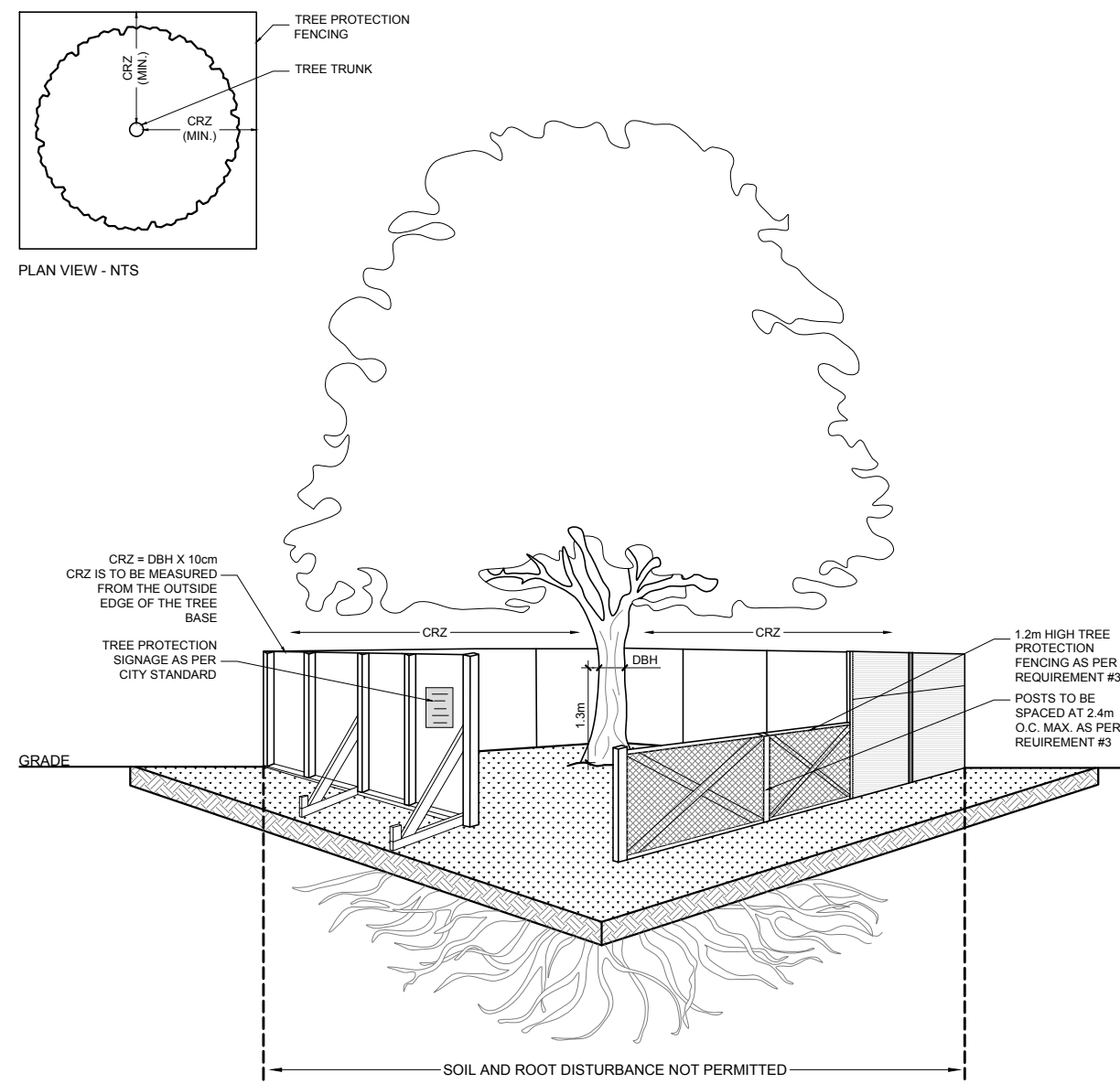
PROJECT NORTH

DRAWING NO.

L.1

PLOT SIZE ARCH-D

1 LANDSCAPE PLAN
L.1 SCALE 1:350



TREE PROTECTION REQUIREMENTS:

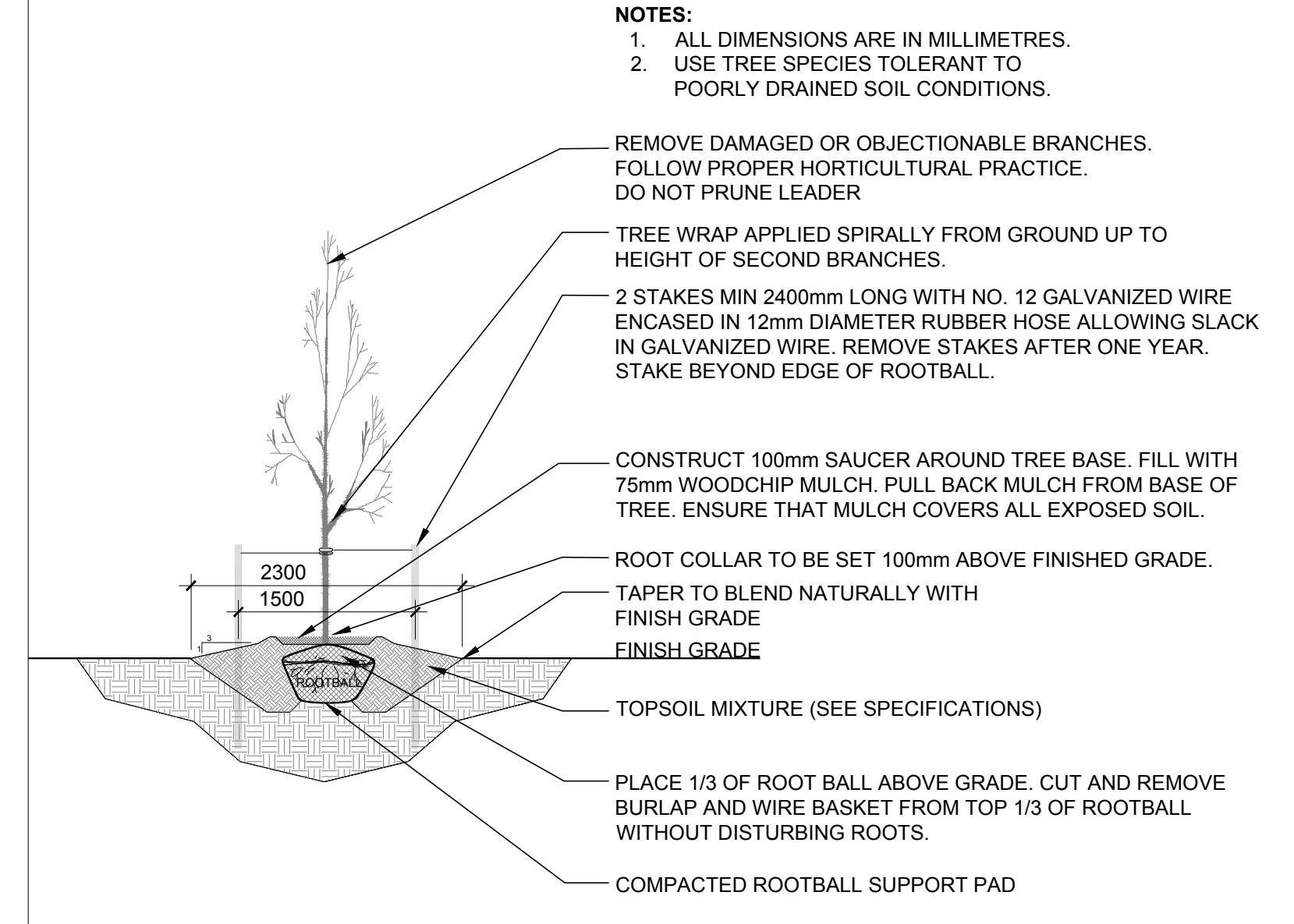
- PRIOR TO ANY WORK ACTIVITY WITHIN THE CRITICAL ROOT ZONE (CRZ = 10X DIAMETER) OF A TREE, TREE PROTECTION FENCING MUST BE INSTALLED SURROUNDING THE CRITICAL ROOT ZONE AND REMAIN IN PLACE UNTIL THE WORK IS COMPLETE.
 - DO NOT PLACE ANY MATERIAL OR EQUIPMENT INCLUDING OUTHOUSES.
 - DO NOT ATTACH ANY SIGNS, NOTICES OR POSTERS TO ANY TREE.
 - DO NOT TRIM OR LOWER THE EXISTING GRADE: - TUNNEL OR BOWE WHEN DIGGING.
 - DO NOT DAMAGE THE ROOT SYSTEM, TRUNK OR BRANCHES OR ANY TREE.
 - ENSURE THAT EXHAUST FUMES FROM ALL EQUIPMENT ARE NOT DIRECTED TOWARD ANY TREE CANOPY.
 - DO NOT EXTEND HARD SURFACE OR SIGNIFICANTLY CHANGE LANDSCAPING.
- UNLESS PLANS ARE APPROVED BY CITY FORESTRY STAFF, FOR WORK WITHIN THE CRZ:
 - DO NOT PLACE ANY MATERIAL OR EQUIPMENT INCLUDING OUTHOUSES.
 - DO NOT TRIM OR LOWER THE EXISTING GRADE: - TUNNEL OR BOWE WHEN DIGGING.
 - DO NOT DAMAGE THE ROOT SYSTEM, TRUNK OR BRANCHES OR ANY TREE.
 - ENSURE THAT EXHAUST FUMES FROM ALL EQUIPMENT ARE NOT DIRECTED TOWARD ANY TREE CANOPY.
 - DO NOT EXTEND HARD SURFACE OR SIGNIFICANTLY CHANGE LANDSCAPING.
- TREE PROTECTION FENCING MUST BE AT LEAST 1.2m IN HEIGHT, AND BE CONSTRUCTED OF RIGID OR FRAMED MATERIALS (E.G. MODULOC - STEEL PLYWOOD HOARDING, OR SNOW FENCE OR A 25X100 WOOD FRAME) WITH POSTS 2.4m APART, SUCH THAT THE FENCE LOCATION CANNOT BE ALTERED. ALL SUPPORTS AND BRACING MUST BE PLACED OUTSIDE OF THE CRZ, AND INSTALLATION MUST MINIMIZE DAMAGE TO EXISTING ROOTS. (SEE DETAIL).
- THE LOCATION OF THE TREE PROTECTION FENCING MUST BE DETERMINED BY AN ARBORIST AND DETAILED ON ANY ASSOCIATED PLANS FOR THE SITE (E.G. TREE CONSERVATION REPORT, TREE DISCLOSURE REPORT, ETC.). THE PLAN AND CONSTRUCTION FENCING MUST BE APPROVED BY CITY FORESTRY STAFF PRIOR TO THE COMMENCEMENT OF WORK.
 - IF THE FENCED TREE PROTECTION AREA MUST BE REDUCED TO FACILITATE CONSTRUCTION, MITIGATION MEASURES MUST BE PRECISED BY AN ARBORIST AND APPROVED BY CITY FORESTRY STAFF. THESE MAY INCLUDE THE PLACEMENT OF PLYWOOD, WOOD CHIPS OR STEEL PLATING OVER THE ROOTS FOR PROTECTION OR THE PROMPT PRUNING AND CARE OF ROOTS WHERE ENCOUNTERED.

BY-LAWS:

ALL CITY-OWNED TREES ARE PROTECTED UNDER THE MUNICIPAL TREES AND NATURAL AREAS PROTECTION BY-LAW (2006-279) WITHIN THE URBAN AREA.

PRIVATELY OWNED TREES GREATER THAN 50cm IN DIAMETER ON LOTS 1 HECTARE IN SIZE OR LESS, AND TREES GREATER THAN 10cm IN DIAMETER ON LOTS GREATER THAN 1 HECTARE, ARE PROTECTED UNDER THE URBAN TREE CONSERVATION BY-LAW (2008-200).

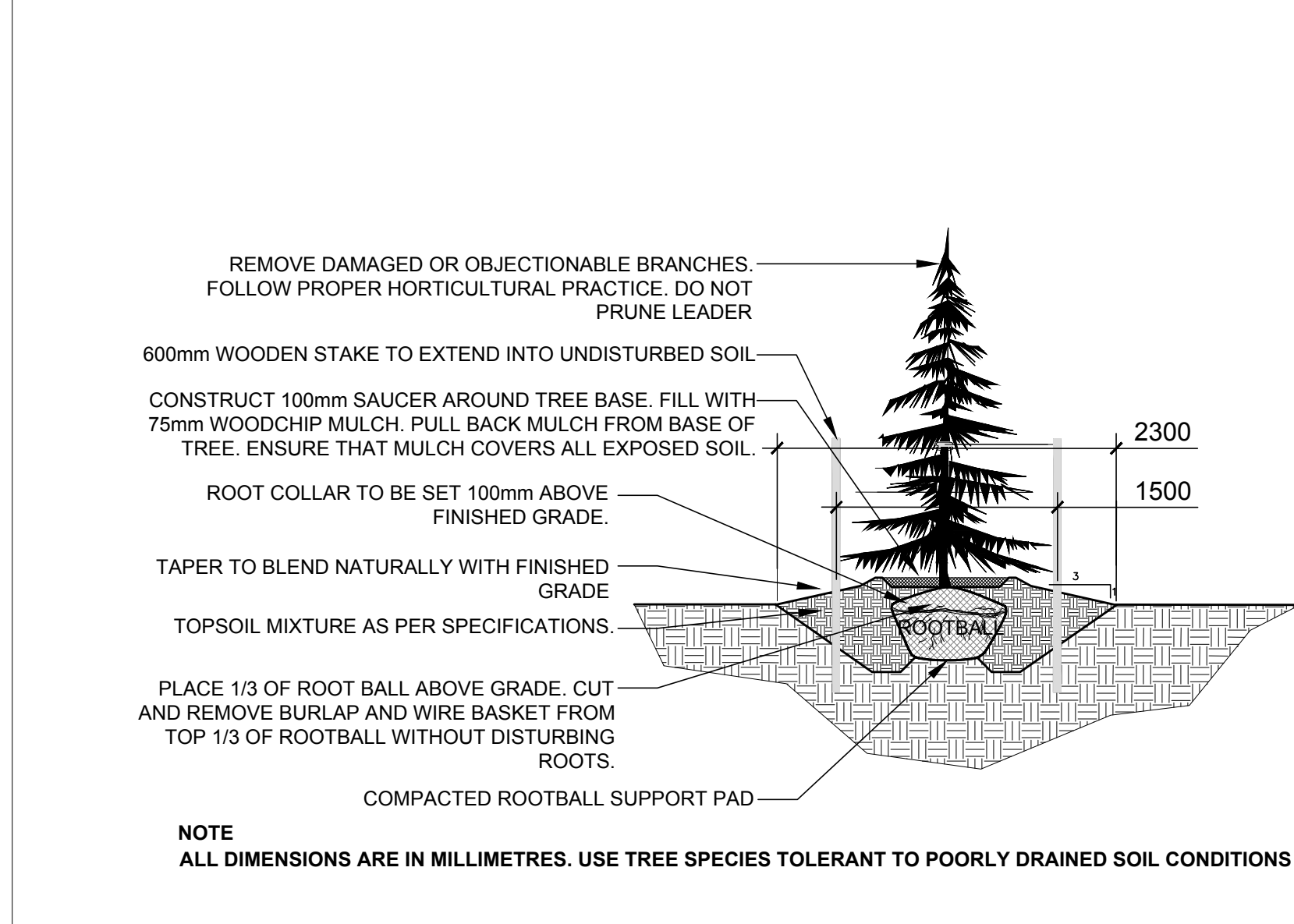
1
L.2 TREE PROTECTION FENCING
N.T.S.



NOTES:

- ALL DIMENSIONS ARE IN MILLIMETRES.
- USE TREE SPECIES TOLERANT TO POORLY DRAINED SOIL CONDITIONS.

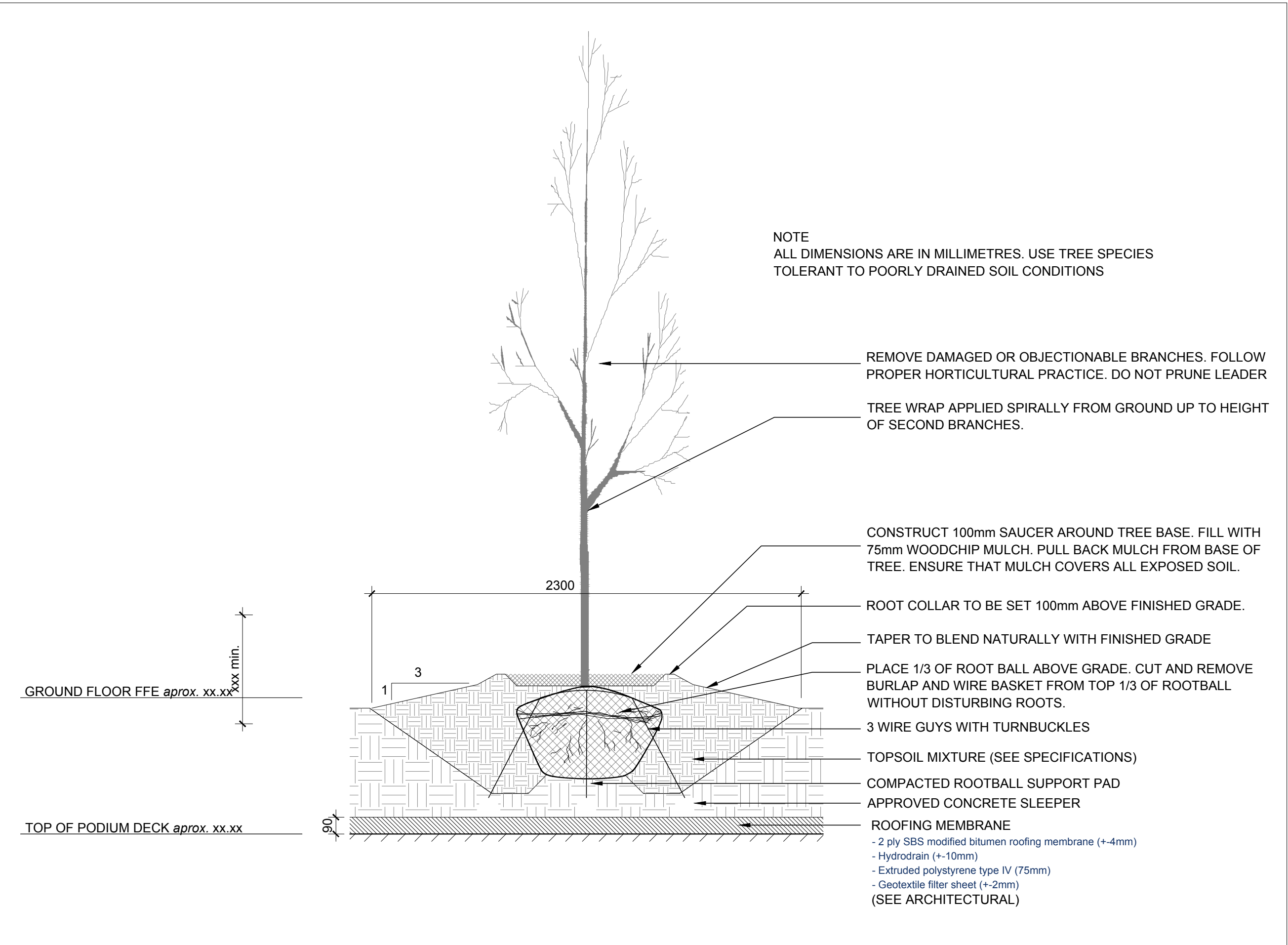
2
L.2 DECIDUOUS TREE PLANTING
N.T.S.



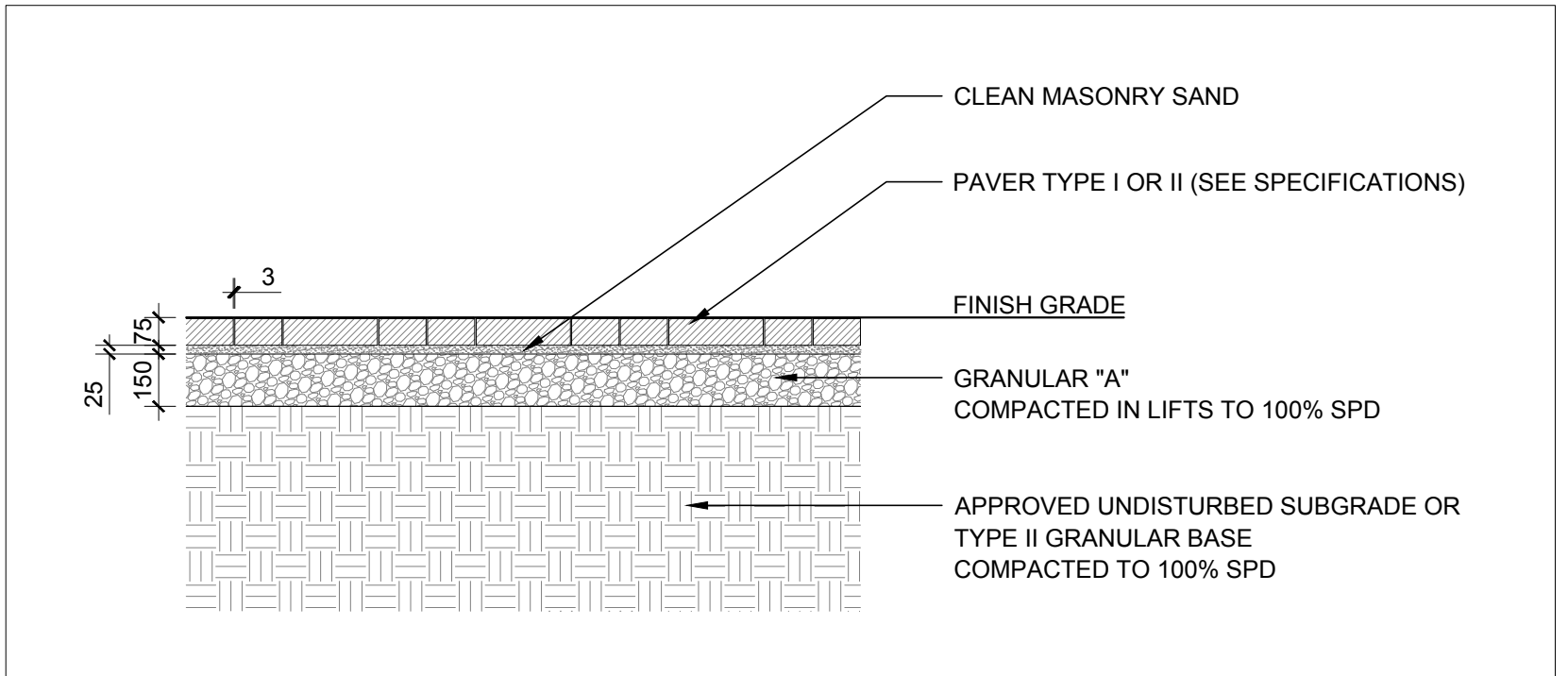
NOTE:

ALL DIMENSIONS ARE IN MILLIMETRES. USE TREE SPECIES TOLERANT TO POORLY DRAINED SOIL CONDITIONS

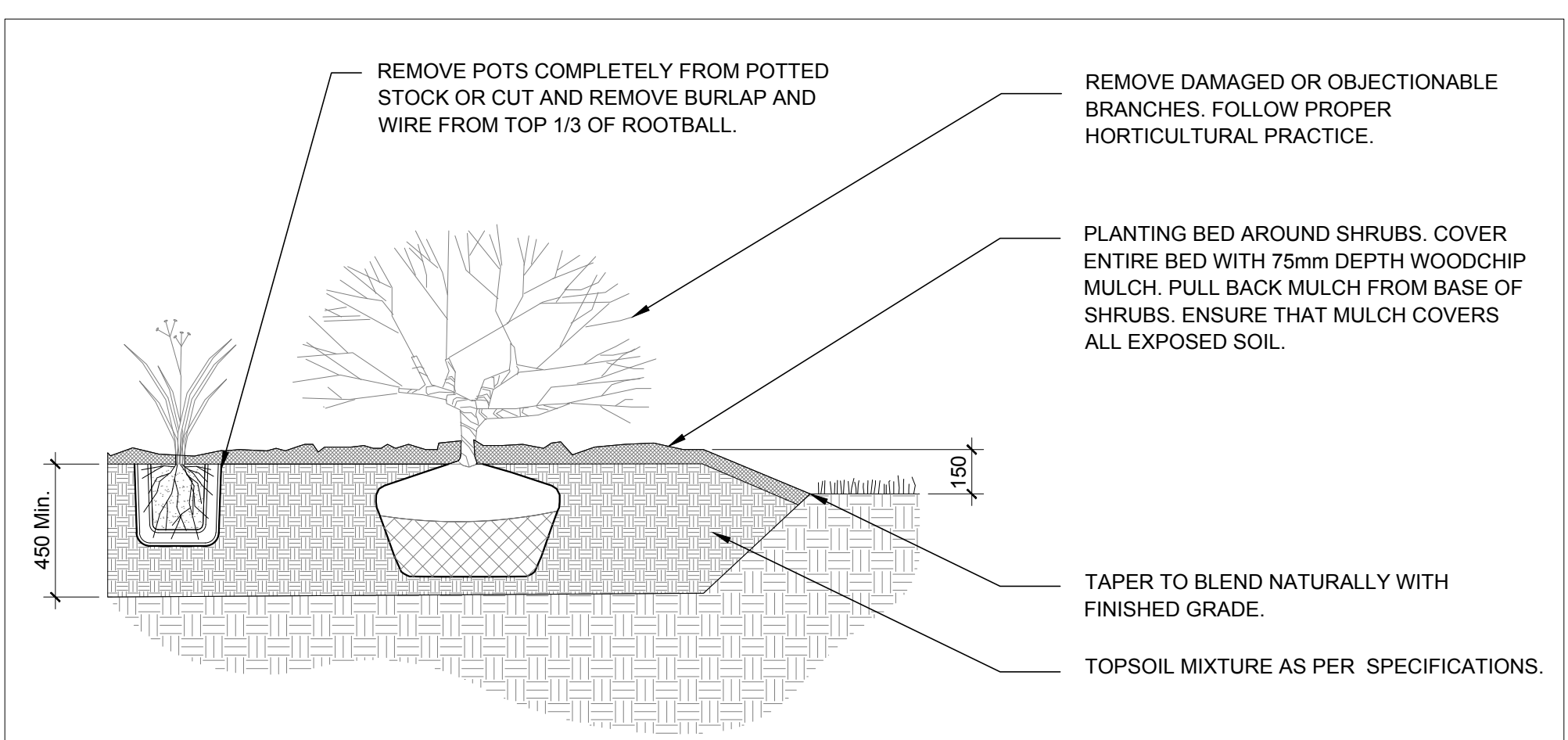
3
L.2 CONIFEROUS TREE PLANTING
N.T.S.



4
L.2 DECIDUOUS TREE PLANTING ON SLAB
N.T.S.



5
L.2 PRECAST CONCRETE PAVERS
N.T.S.



6
L.2 ORNAMENTAL SHRUB, PERENNIAL & GRASS PLANTING
N.T.S.

GENERAL NOTES:

- It is the responsibility of the appropriate contractor or official to report any errors, omissions or discrepancies on this plan with actual site conditions to the Landscape Architect before proceeding with construction.
- The contractor is to notify all utility companies and authorities prior to any excavation and ascertain locations of underground services.
- The contractor is to reinstate all areas and items damaged as a result of construction activity.
- The contractor is to comply with all pertinent codes and by-laws.
- The contractor is to maintain a positive surface run-off throughout the entire construction period.
- The Landscape Architect is not responsible for subsurface conditions.
- The contractor is to identify all existing trees to remain on site with the Landscape Architect prior to construction.
- The contractor is to stake the proposed location of all plant material in conjunction with the Landscape Architect prior to excavation.
- Minimum distances for selected deciduous trees are as follows:
 - Building Foundations 7.5m
 - Sidewalks 1.5m
 - Public Streets 2.5m
 - Underground Infrastructure 2.0m
- All trees within 1m of underground utility trenches are to be excavated by hand.
- Remove all protective wrapping from tree trunks after installation.
- Staking of trees shall only be performed if necessary.
- Ensure that mulch is pulled back a min. distance of 75mm from base of tree trunk.

No.	Issue	Date	DR	CK
3	ISSUED FOR SITE PLAN APPROVAL R1	09/27/2021	SS	JL
2	ISSUED FOR SITE PLAN APPROVAL	09/24/2021	SS	JL
1	ISSUED FOR SPA COORDINATION	09/22/2021	SS	JL

JAMES B. LENNOX & ASSOCIATES INC.
LANDSCAPE ARCHITECTS
3332 CARLING AVE. OTTAWA, ONTARIO K2H 5A5
Tel: (613) 722-5168 Fax: (866) 343-3942

PROJECT

EMD KANATA

KANATA TOWN CENTRE (PARCELS 2 & 3)
KANATA AVE / MARITIME WAY

DRAWING

LANDSCAPE DETAILS

STAMP	SCALE
	AS SHOWN
	START DATE
	AUGUST 2021
PROJECT NO.	21-MIS-2192

PROJECT NORTH

DRAWING NO.

L.2

PLOT SIZE ARCH-D