

GENERAL NOTES

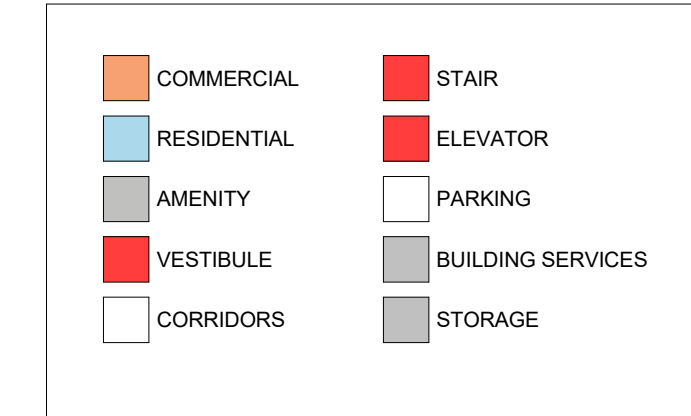
NOTE-A: ALL DRAWINGS ARE TO BE READ IN CONJUNCTION WITH ALL OTHER DRAWINGS AND SPECIFICATIONS, INCLUDING OTHER CONSULTANTS DRAWINGS AND SPECIFICATIONS. ANY DISCREPANCIES BETWEEN DRAWINGS WILL BE REPORTED TO THE PROJECT LEAD IMMEDIATELY FOR CLARIFICATION PRIOR TO COMMENCING ANY CONSTRUCTION.

NOTE-B: ALL GENERAL SITE INFORMATION AND CONDITIONS HAVE BEEN COMPILED FROM EXISTING PLANS AND SURVEYS.

NOTE-C: REFER TO LANDSCAPE PLANN FOR ALL EXTERIOR LANDSCAPING.

NOTE-D: DO NOT SCALE DRAWINGS.

NOTE-E: ALL CONTRACTORS MUST COMPLY WITH ALL APPLICABLE CODES AND REGULATIONS.



DRAWING NOTES

This document and all information herein is confidential and the intellectual property of Rossmann Architects. It is disclosed in confidence on terms that it will not be disclosed to any third party, used, copied, licensed, or reproduced in whole or in any part in any manner or form for manufacturing, rendering or for any other purpose without the written permission of Rossmann Architects.

The copyright is retained by Rossmann Architects and Associates Inc. Ce document, ainsi que tous renseignements contenus à l'intérieur, est la propriété de Rossmann Architects. Il est divulgué en confiance sous les termes qu'il ne sera pas divulgué à aucun tiers, utilisé, vendu, prêté, licencié ou reproduit en son entier ou en partie d'aucune manière pour la manufacture, soumission ou pour autres fins sans la permission écrite de Rossmann Architects.

Le droit d'auteur est retenu par Rossmann Architects.

NOT FOR / PAS POUR CONSTRUCTION

ROSSMANN ARCHITECTURE

88 Saint-Joseph
Boulevard, Gatineau
QC J8Y 3W5
819-600-1555

Drawn by / Dessiné par JDL
Reviewed by / Révisé par ES

TEAM / ÉQUIPE



1 2021-09-22 SITE PLAN CONTROL
Release Date Description

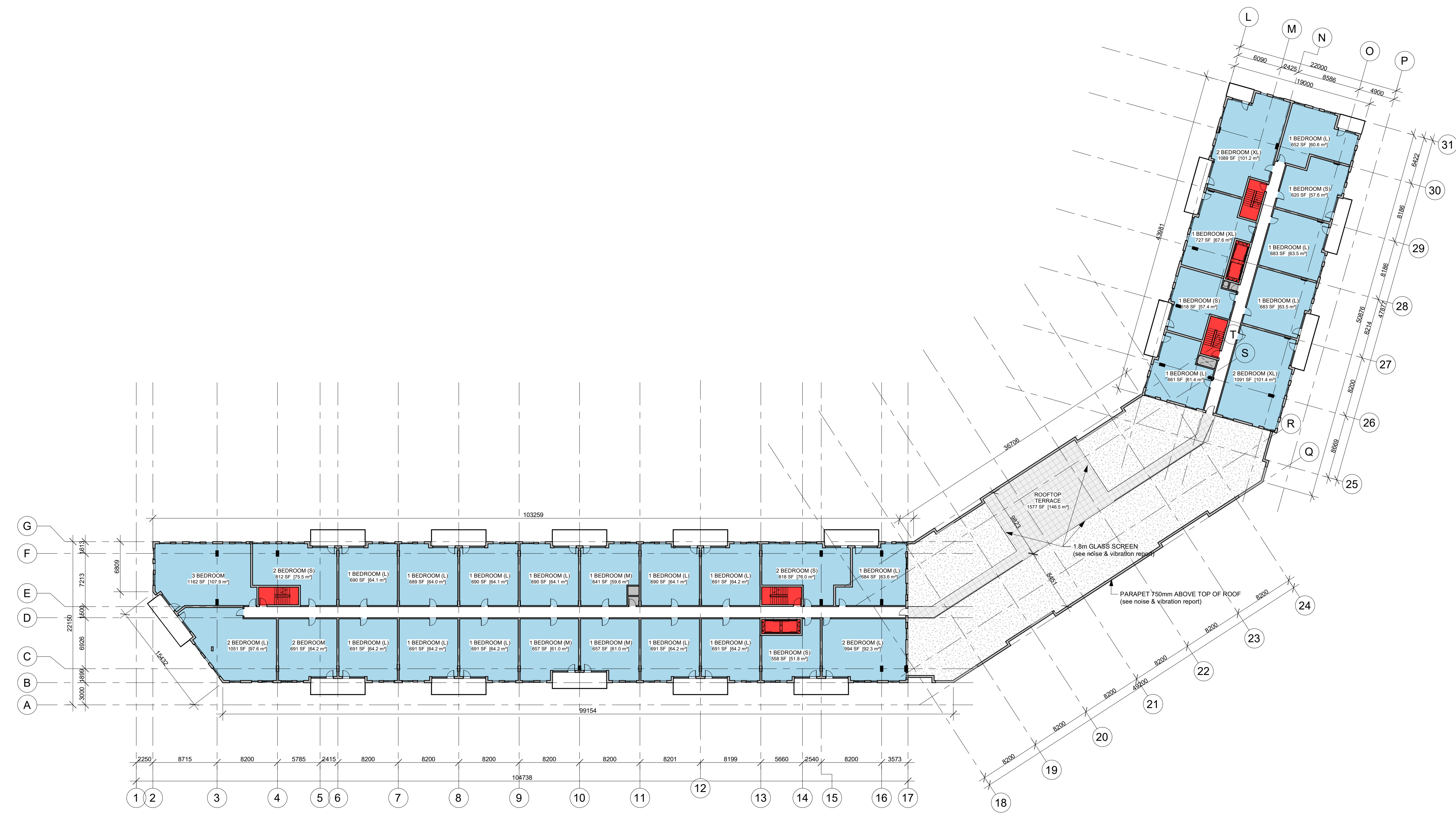
1.0 2021-09-22 SITE PLAN APPLICATION
Revision Date Description



21019
EMD KANATA
Kanata Town Centre [Parcels 2 & 3]
Kanata Ave / Maritime Way

TYPICAL FLOOR PLAN (LEVELS 8-9)

2021-09-22
Scale as indicated / Echelle telle qu'indiquée
Revision 1.0
A106



2 TYPICAL FLOOR PLAN (LEVELS 8-9)
1 : 300