

1 STORM DESIGN REFERENCE SHEET
P-305 SCALE: 1:300

STORM SEWER DESIGN SHEET
436 -8605 Campeau Drive, Ottawa

Runoff Coefficient, C

Pervious Areas	0.20
Landscape Areas	0.20
Roof Areas	0.90
Paved Areas	0.90
Gravel/Unit Paved Areas	0.90
Other Impervious Areas	0.90

Rainfall:

A=	998.071
B=	0.814
C=	6.053

Time of Concentration, min: 10.00
Rainfall Intensity (mm/hr): 104.19 5 year storm

Catchment ID	Area Imper. (m ²)	Area Perv. (m ²)	Composite C-Value	Rainfall Intensity (mm/hr)	Total Area (m ²)	Flow (m ³ /s)
A	1098.30	459.10	0.69	104.19	1557.40	0.031
B	600.80	39.23	0.86	104.19	640.03	0.016
C	375.88	0.00	0.90	104.19	375.88	0.010
D	0.00	1015.52	0.20	104.19	1015.52	0.006
E	287.85	0.00	0.90	104.19	287.85	0.008
F	1027.90	11.01	0.89	104.19	1038.91	0.027
G	375.78	16.91	0.87	104.19	392.69	0.010
H	759.70	0.00	0.90	104.19	759.70	0.020
I	414.98	312.64	0.60	104.19	727.62	0.013
J	0.00	927.13	0.20	104.19	927.13	0.005
K	482.69	0.00	0.90	104.19	482.69	0.013
TOTAL	5423.88	2782	0.66	104.19	8205.41	0.145

Pipe ID	Pipe Dia. (m)	Area (m ²)	Perimeter (m)	Hydraulic Radius (m)	Slope (m/m)	Roughness Coefficient	Velocity (m/s)	Max. Pipe Flow (M) (m ³ /s)	Actual Pipe Flow (A) (m ³ /s)	Percentage of flow	Available Capacity	Servicing area
1	0.250	0.049	0.785	0.063	0.010	0.013	1.211	0.059	0.031	53%	47%	A
2	0.250	0.049	0.785	0.063	0.020	0.013	1.713	0.084	0.016	19%	81%	B
3	0.300	0.071	0.942	0.075	0.010	0.013	1.368	0.097	0.057	59%	41%	A-C
4	0.250	0.049	0.785	0.063	0.010	0.013	1.211	0.059	0.013	23%	77%	D-E
5	0.250	0.049	0.785	0.063	0.010	0.013	1.211	0.059	0.023	39%	61%	D-G except F
6	0.250	0.049	0.785	0.063	0.010	0.013	1.211	0.059	0.020	33%	67%	H
7	0.375	0.110	1.178	0.094	0.010	0.013	1.587	0.175	0.127	72%	28%	A-H
8	0.400	0.126	1.257	0.100	0.010	0.013	1.657	0.208	0.127	61%	39%	A-H
9	0.250	0.049	0.785	0.063	0.010	0.013	1.211	0.059	0.013	21%	79%	K
10	0.375	0.110	1.178	0.094	0.020	0.013	2.245	0.248	0.005	2%	98%	A-I
11	0.250	0.049	0.785	0.063	0.020	0.013	1.713	0.084	0.058	69%	31%	D/S of Orifice
12	0.250	0.049	0.785	0.063	0.020	0.013	1.713	0.084	0.058	69%	31%	U/S of Orifice

All Hamlin

ALLISON HAMLIN
MANAGER (A), DEVELOPMENT REVIEW WEST
PLANNING, REAL ESTATE & ECONOMIC DEVELOPMENT
DEPARTMENT, CITY OF OTTAWA

APPROVED
By Allison Hamlin at 1:23 pm, Nov 23, 2023

PLAN OF SURVEY
PART 1 - PLAN OF SURVEY OF
PART OF BLOCK 6
PLAN 4M-1566
AND
PART OF LOT 3
CONCESSION 1
GEOGRAPHIC TOWNSHIP OF HUNTLEY
CITY OF OTTAWA



KEY PLAN NTS

GENERAL NOTES

- VERIFY ALL DIMENSIONS PRIOR TO CONSTRUCTION.
- DO NOT SCALE DRAWINGS.
- REPORT ALL DISCOVERIES OF ERRORS, OMISSIONS OR DISCREPANCIES TO THE DESIGN ENGINEER AS APPLICABLE.
- USE ONLY LATEST REVISED DRAWINGS OR THOSE THAT ARE MARKED "ISSUED FOR CONSTRUCTION".
- DESIGN AND CONSTRUCTION OF THIS PROJECT SHALL COMPLY WITH THE PROVINCIAL AND LOCAL BUILDING CODES LATEST EDITION.
- ALL WORKS AND MATERIALS USED SHALL COMPLY AS REQUIRED BY THE BUILDING CODE LATEST EDITION.
- THIS DRAWING SHALL BE READ IN CONJUNCTION WITH ALL RELEVANT DRAWINGS & SPECIFICATIONS.
- EVERYTHING IS TO BE CONSIDERED NEW UNLESS SPECIFIED EXISTING OTHERWISE.

LEGEND

- +100.00 EXISTING ELEVATION
- EXISTING CATCHBASIN
- EXISTING C.B./M.H.
- EXISTING MANHOLE
- NEW CATCHBASIN
- NEW C.B./M.H.
- NEW MANHOLE
- EXISTING STORM LINE
- EXISTING SANITARY LINE
- PROPERTY LINE
- SETBACK LINE
- NEW SANITARY LINE
- NEW STORM LINE
- STORM PIPE ID
- CATCHMENT BOUNDARY
- CATCHMENT ID
- CATCHMENT AREA (m²)
- RUNOFF COEFFICIENT

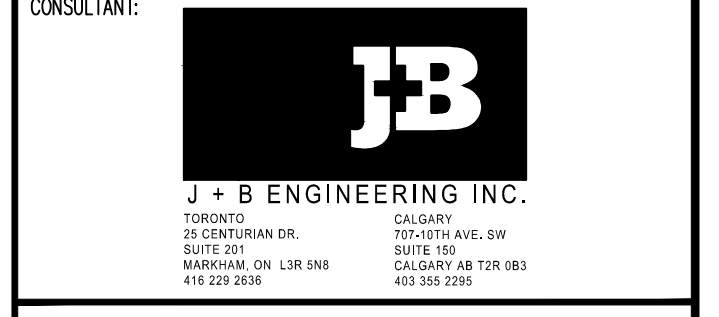
REVISION TABLE

REV.	DESCRIPTION	DRAWN	APP'D.	DATE
0	REVISED AS PER SITE PLAN DEC 15, 2022 AND CITY COMMENTS	MJ	JS	24 FEB 23
1	REVISED AS PER SITE PLAN MAR 14, 2023 AND CITY COMMENTS	MJ	JS	14 MAR 23

ISSUE TABLE

TO	FOR	DATE
CITY	ISSUED FOR SPA	28 JUL 22
SUNCOR	FOR REVIEW	24 FEB 23
CITY	RE-ISSUED FOR SPA	17 MAR 23

METRIC
ALL DIMENSIONS ARE IN MILLIMETRES (U.N.O. CONTRACTOR TO CHECK/VERIFY ALL DIMENSIONS PRIOR TO COMMENCEMENT OF WORK. ALL DISCREPANCIES TO BE REPORTED TO THE PROJECT DESIGNER. DO NOT SCALE DRAWINGS.



DRAWING TITLE:
STORM SEWER REFERENCE SHEET

PROJECT:
PROMENADE PALLADIUM DRIVE @ PROMENADE CAMPEAU DRIVE
OTTAWA, ON

DRAWN BY:	RP	CAD INFO:	SHEET SIZE D (559 x 864)
DRAWING SCALE:	1:300		PETRO-CANADA CAD FILE No.
DATE DRAWN:	2022-07-08		CONSULTANT CAD FILE No. 200258-P305
CHECKED BY:	BR		PLOT SCALE 1:1
APPROVED BY:	JS		PLOT DATE
			PLOT CONFIGURATION
STD No./OUTLET No.	10565		P305