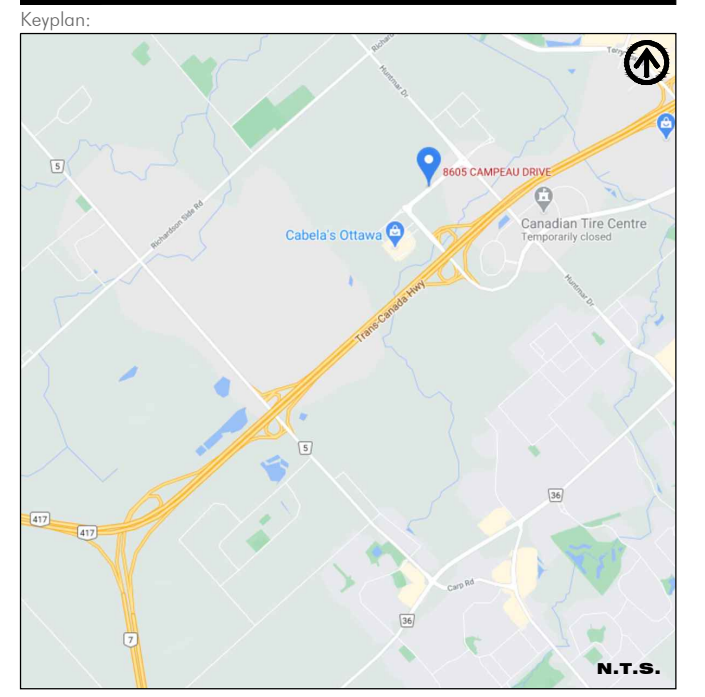


At Hamlin

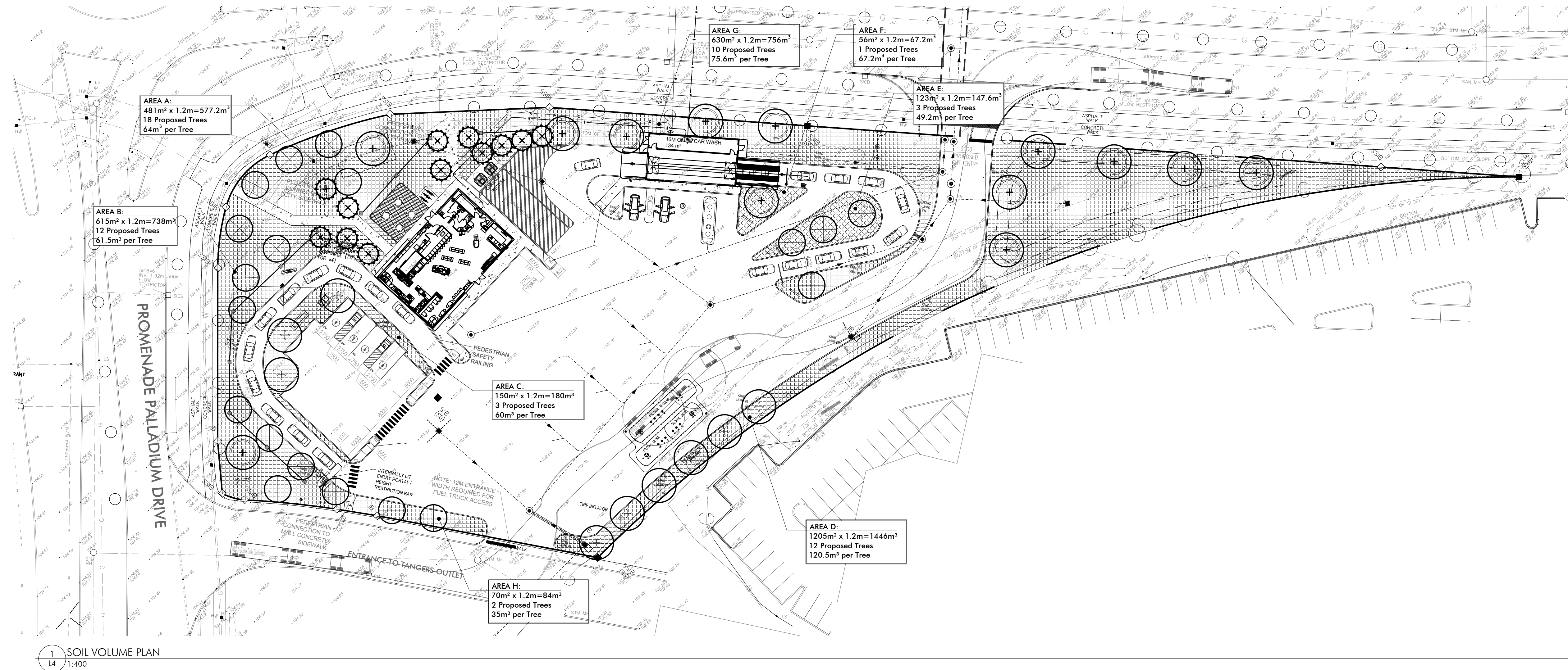
ALLISON HAMLIN  
MANAGER (A), DEVELOPMENT REVIEW WEST  
PLANNING, REAL ESTATE & ECONOMIC DEVELOPMENT  
DEPARTMENT, CITY OF OTTAWA

APPROVED  
By Allison Hamlin at 4:32 pm, Feb 14, 2024



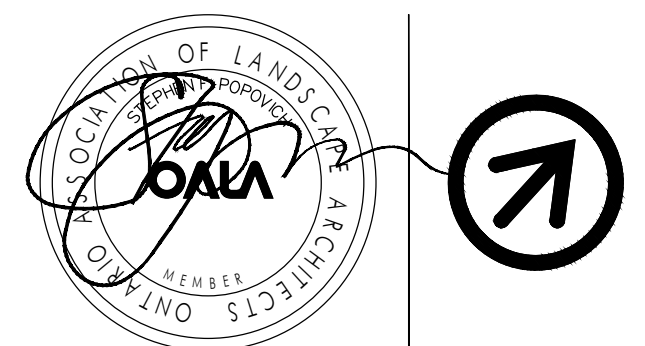
We have relied upon the accuracy and completeness of base & background information provided by the following Consultants in preparing this drawing and performing our professional services.

We are under no obligation or duty to verify the accuracy and/or completeness of this information and have not done so. We shall not be held responsible for any errors or omissions that may arise or be incorporated as a result of erroneous or incomplete information provided by the Client, Consultants and Contractors. The contractor will check and verify all dimensions and job conditions on the site and report any discrepancies to the Landscape Architect prior to the commencement of construction.



|     |              |                                   |    |
|-----|--------------|-----------------------------------|----|
| 8   | 230718       | REVISED PER NEW SITE PLAN         | SX |
| 7   | 230620       | REVISED PER NEW SITE PLAN         | SX |
| 6   | 230608       | REVISED PER COMMENTS              | SX |
| 5   | 230330       | REVISED PER REV. SERVICING PLAN   | YY |
| 4   | 230322       | REVISED PER REV. SITE PLAN        | YY |
| 3   | 221215       | REVISED PER CITY COMMENTS         | SX |
| 2   | 220824       | ISSUED FOR SITE PLAN RESUBMISSION | SX |
| 1   | 220715       | REVISED PER SITE PLAN             | SX |
| No. | Date (MM/DD) | Issue / Revision                  | By |

**POPOVICH**  
ASSOCIATES  
1 Robert Speck Parkway, Suite 100  
Mississauga, Ontario L4Z 3M3  
T. 905.270.2229 F. 905.270.2190  
info@popovich.ca



Landscape Architects electronic or digital seal or signature is effective only as to that version of this document as originally published by the Landscape Architect. Landscape Architect is not responsible for any subsequent modification, corruption, or unauthorized use of such document. To verify that validity or applicability of the seal or signature, contact Landscape Architect. All drawings are the property of the Landscape Architect and may not be copied, reproduced or altered without written permission from the Landscape Architect. DO NOT SCALE DRAWING.

Project Info:  
**SITE DEVELOPMENT**  
8605 CAMPEAU DRIVE, STITTSVILLE, ON

Client Info:  
**PETRO CANADA**  
Suncor Energy Group  
OUTLET #10565

Sheet Title:  
**SOIL VOLUME PLAN**

Project Number: 1504  
Drawn By: SX  
Checked By: SP  
Date: DECEMBER 2020  
Scale: AS NOTED

Sheet Number:  
**L4**

