

We have relied upon the accuracy and completeness of base & background information provided by the following Consultants in preparing this drawing and performing our professional services.

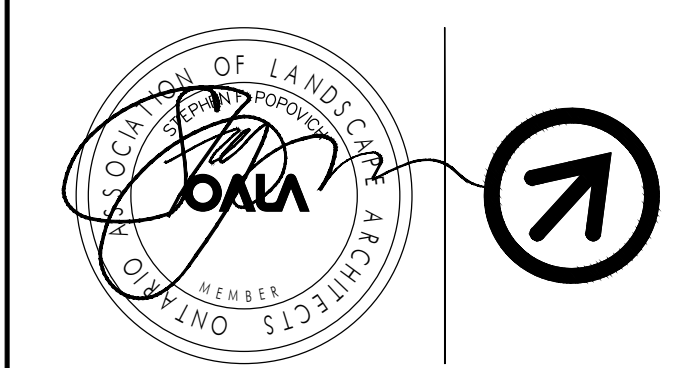
We are under no obligation or duty to verify the accuracy and/or completeness of this information and have not done so. We shall not be held responsible for any errors or omissions that may arise or be incorporated as a result of erroneous or incomplete information provided by the Client, Consultants and Contractors. The contractor will check and verify all dimensions and job conditions on the site and report any discrepancies to the Landscape Architect prior to the commencement of construction.

LEGEND

- PROPOSED PILLAR AND DECORATIVE METAL FENCE
- PROPOSED TREES
- PROPOSED SHRUBS
- PROPOSED GRASSES
- PROPOSED SOD
- PROPOSED SEED

NO.	DATE	REVISION	BY
13	240205	REVISED PER NEW SITE PLAN	SV
12	230718	REVISED PER NEW SITE PLAN	SX
11	230620	REVISED PER NEW SITE PLAN	SX
10	230608	REVISED PER COMMENTS	SX
9	230330	REVISED PER REV. SERVICING PLAN	YY
8	230322	REVISED PER REV. SITE PLAN	YY
7	221215	REVISED PER CITY'S COMMENTS	SX
6	220824	ISSUED FOR SITE PLAN RESUBMISSION	SX
5	220728	REVISED PER COMMENTS	SX
4	220715	REVISED PER SITE PLAN	SX
3	211028	REISSUED FOR SPA	GB
2	210115	ISSUED FOR SITE PLAN APPLICATION	GB
1	201222	ISSUED FOR DISCUSSION	GB

POPOVICH ASSOCIATES
 1 Robert Speck Parkway, Suite 100
 Mississauga, Ontario L4Z 3M3
 T. 905.270.2229 F. 905.270.2190
 info@popovich.ca



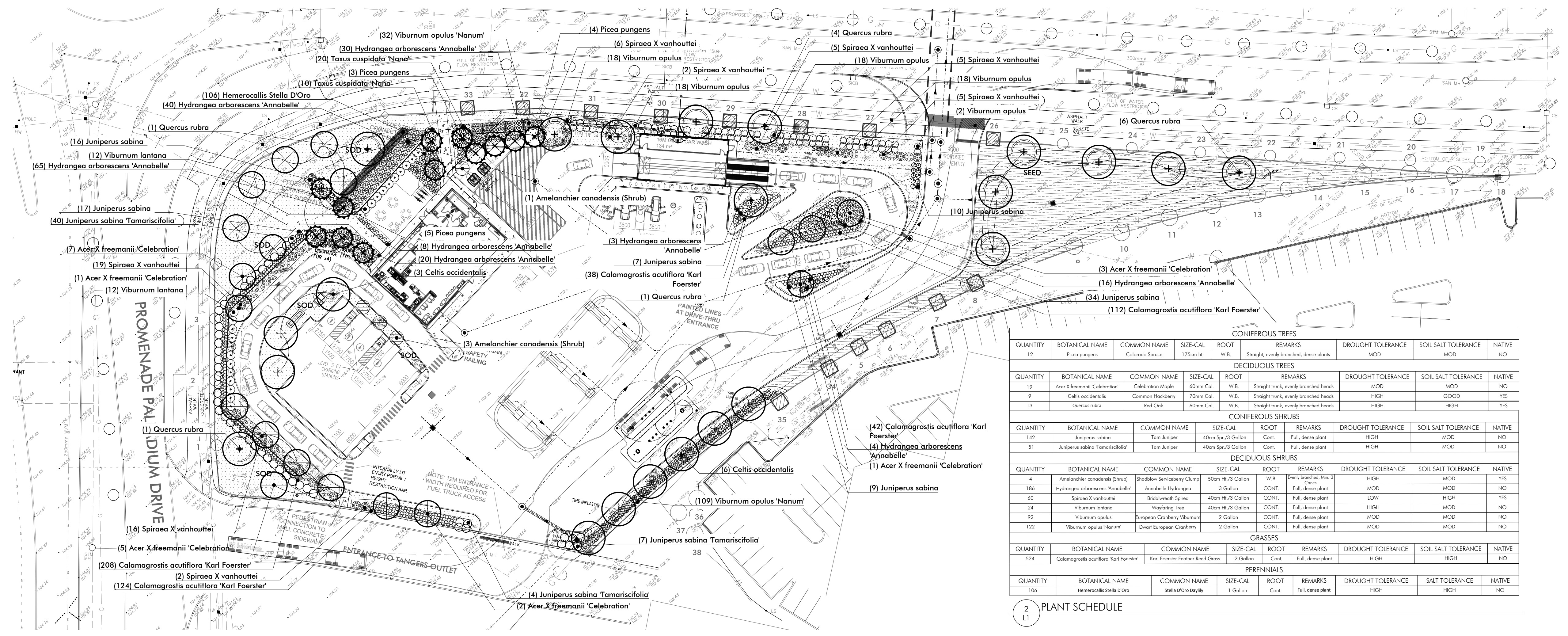
Landscape Architects electronic or digital seal or signature is effective only as to that version of this document as originally published by the Landscape Architect. Landscape Architect is not responsible for any subsequent modification, corruption, or unauthorized use of such document. To verify that validity or applicability of the seal or signature, contact Landscape Architect. All drawings are the property of the Landscape Architect and may not be copied, reproduced or altered without written permission from the Landscape Architect. DO NOT SCALE DRAWING.

Project Info:
SITE DEVELOPMENT
 8605 CAMPEAU DRIVE, STITTSVILLE, ON

Client Info:
PETRO CANADA
 Suncor Energy Group
 OUTLET #10565

Sheet Title:
LANDSCAPE PLAN

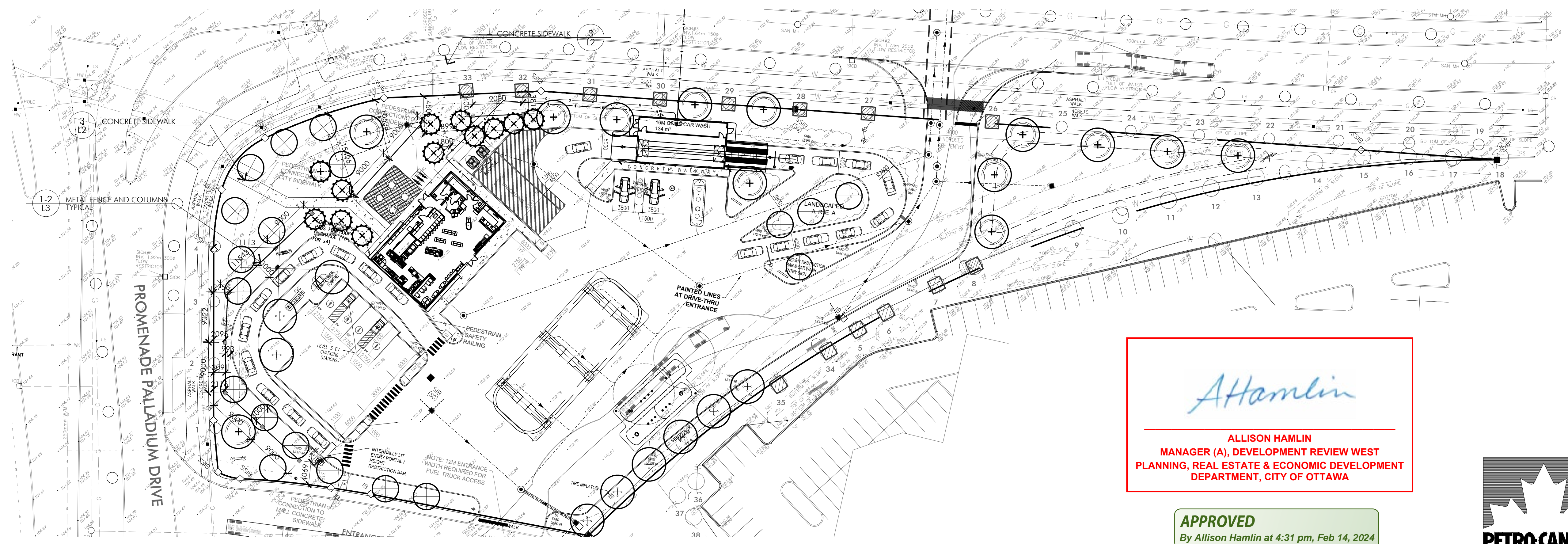
Project Number:	1504	Sheet Number:	
Drawn By:	GB		
Checked By:	SP		
Date:	DECEMBER 2020		
Scale:	AS NOTED		



1 LANDSCAPE CONCEPT PLAN
 1:400

CONIFEROUS TREES									
QUANTITY	BOTANICAL NAME	COMMON NAME	SIZE-CAL	ROOT	REMARKS	DROUGHT TOLERANCE	SOIL SALT TOLERANCE	NATIVE	
12	Picea pungens	Colorado Spruce	175cm Ht.	W.B.	Straight, evenly branched, dense plants	MOD	MOD	NO	
DECIDUOUS TREES									
4	Acer X freemanii 'Celebration'	Celebration Maple	60mm Cal.	W.B.	Straight trunk, evenly branched heads	MOD	MOD	NO	
9	Celtis occidentalis	Common Hackberry	70mm Cal.	W.B.	Straight trunk, evenly branched heads	HIGH	GOOD	YES	
13	Quercus rubra	Red Oak	60mm Cal.	W.B.	Straight trunk, evenly branched heads	HIGH	HIGH	YES	
CONIFEROUS SHRUBS									
142	Juniperus sabina	Tom Juniper	40cm Spr./3 Gallon	Cont.	Full, dense plant	HIGH	MOD	NO	
51	Juniperus sabina 'Tamariscifolia'	Tom Juniper	40cm Spr./3 Gallon	Cont.	Full, dense plant	HIGH	MOD	NO	
DECIDUOUS SHRUBS									
4	Amelanchier canadensis (Shrub)	Shepherd's Tree	50cm Ht./3 Gallon	W.B.	Early blooming, 1st yr.	HIGH	MOD	YES	
186	Hydrangea arborescens 'Annabelle'	Annabelle Hydrangea	3 Gallon	CONT.	Full, dense plant	MOD	MOD	NO	
20	Spiraea X vanhouttei	Bridalwreath Spiraea	40cm Ht./3 Gallon	CONT.	Full, dense plant	LOW	HIGH	YES	
44	Viburnum lantana	Waxleaf Tree	40cm Ht./3 Gallon	CONT.	Full, dense plant	HIGH	MOD	NO	
92	Viburnum opulus	European Cranberry Viburnum	2 Gallon	CONT.	Full, dense plant	MOD	MOD	NO	
122	'Viburnum opulus 'Nanum'	Dwarf European Cranberry	2 Gallon	CONT.	Full, dense plant	MOD	MOD	NO	
GRASSES									
524	Calamagrostis acutiflora 'Karl Foerster'	Karl Foerster Feather Reed Grass	2 Gallon	Cont.	Full, dense plant	HIGH	HIGH	NO	
PERENNIALS									
106	Hemerocallis Stella D'Oro	Stella D'Oro Daylily	1 Gallon	Cont.	Full, dense plant	HIGH	HIGH	NO	

2 PLANT SCHEDULE
 1:1



3 DECORATIVE METAL FENCE LAYOUT
 1:400

Allison Hamlin
ALLISON HAMLIN
 MANAGER (A), DEVELOPMENT REVIEW WEST
 PLANNING, REAL ESTATE & ECONOMIC DEVELOPMENT
 DEPARTMENT, CITY OF OTTAWA

APPROVED
 By Allison Hamlin at 4:31 pm, Feb 14, 2024

