

BLOCK 1
 PLAN 4M-1605
 PIN 04508-0165 (LT)

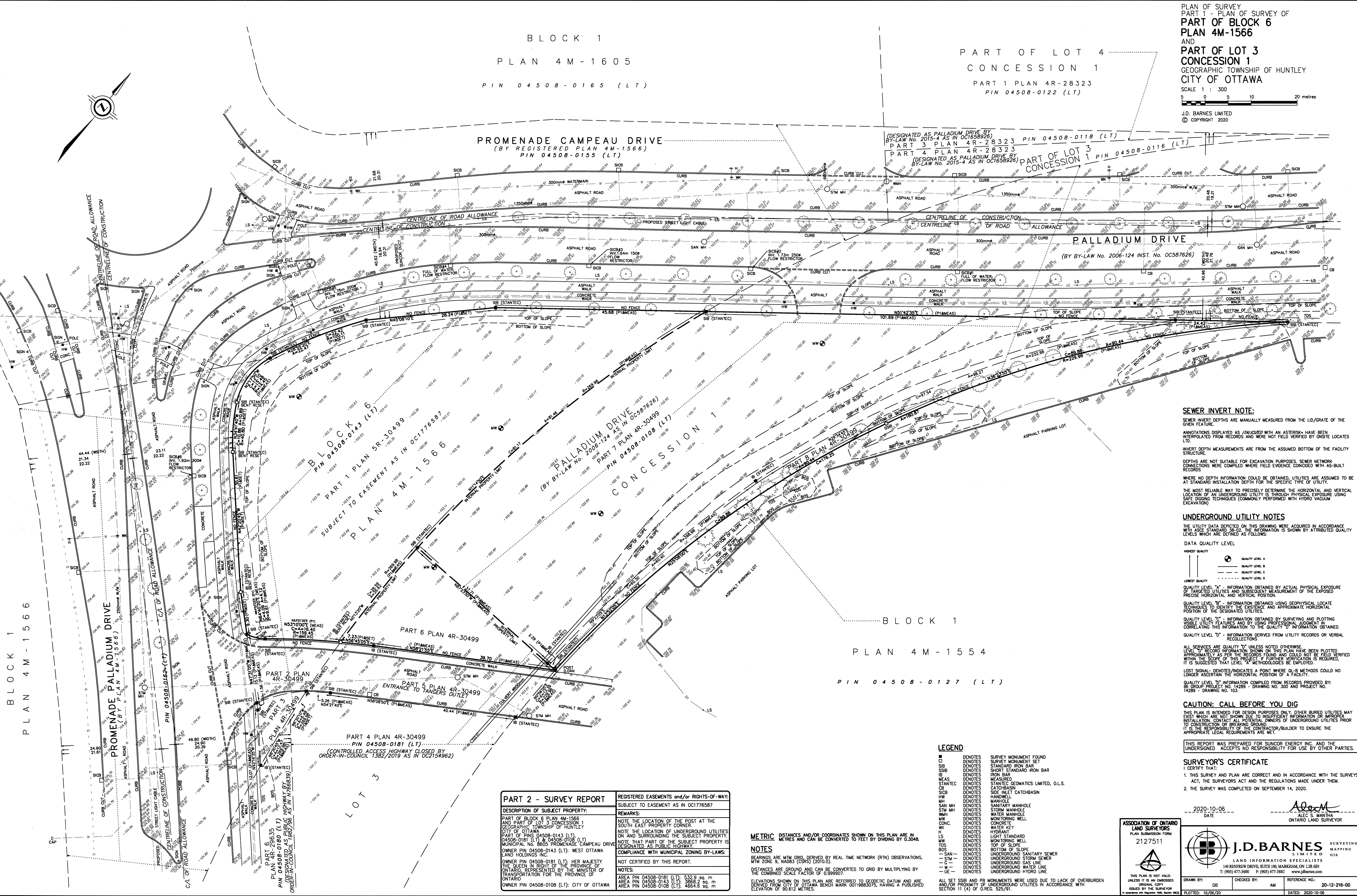
PART OF LOT 4
 CONCESSION 1
 PART 1 PLAN 4R-28323
 PIN 04508-0122 (LT)

PLAN OF SURVEY
 PART 1 - PLAN OF SURVEY OF
 PART OF BLOCK 6
 PLAN 4M-1566
 AND
 PART OF LOT 3
 CONCESSION 1
 GEOGRAPHIC TOWNSHIP OF HUNTLEY
 CITY OF OTTAWA
 SCALE 1 : 300
 5 0 5 10 20 metres
 J.D. BARNES LIMITED
 © COPYRIGHT 2020

PROMENADE CAMPEAU DRIVE
 (BY REGISTERED PLAN 4M-1566)
 PIN 04508-0155 (LT)

(DESIGNATED AS PALLADIUM DRIVE BY
 BY-LAW No. 2015-4 AS IN OC1658926)
 PART 3 PLAN 4R-28323 PIN 04508-0118 (LT)
 PART 4 PLAN 4R-28323
 (DESIGNATED AS PALLADIUM DRIVE BY
 BY-LAW No. 2015-4 AS IN OC1658926)
 PART OF LOT 3
 CONCESSION 1 PIN 04508-0116 (LT)

PALLADIUM DRIVE
 (BY BY-LAW No. 2006-124 INST. No. OC587626)



SEWER INVERT NOTE:
 SEWER INVERT DEPTHS ARE MANUALLY MEASURED FROM THE LID/GRADE OF THE GIVEN FEATURE.
 ANNOTATIONS DISPLAYED AS *italicized* WITH AN ASTERISK* HAVE BEEN INTERPOLATED FROM RECORDS AND WERE NOT FIELD VERIFIED BY ONSITE LOCATES LTD.
 INVERT DEPTH MEASUREMENTS ARE FROM THE ASSUMED BOTTOM OF THE FACILITY STRUCTURE.
 DEPTHS ARE NOT SUITABLE FOR EXCAVATION PURPOSES. SEWER NETWORK CONNECTIONS WERE COMPILED WHERE FIELD EVIDENCE COINCIDED WITH AS-BUILT RECORDS.
 WHERE NO DEPTH INFORMATION COULD BE OBTAINED, UTILITIES ARE ASSUMED TO BE AT STANDARD INSTALLATION DEPTH FOR THE SPECIFIC TYPE OF UTILITY.
 THE MOST RELIABLE WAY TO PRECISELY DETERMINE THE HORIZONTAL AND VERTICAL LOCATION OF AN UNDERGROUND UTILITY IS THROUGH PHYSICAL EXPOSURE USING SAFE DIGGING TECHNIQUES (COMMONLY PERFORMED WITH HYDRO VACUUM EXCAVATION).

UNDERGROUND UTILITY NOTES
 THE UTILITY DATA DEPICTED ON THIS DRAWING WERE ACQUIRED IN ACCORDANCE WITH ASSE STANDARD 38-02. THE INFORMATION IS SHOWN BY ATTRIBUTED QUALITY LEVELS WHICH ARE DEFINED AS FOLLOWS:

DATA QUALITY LEVEL

HIGHEST QUALITY	QUALITY LEVEL A
	QUALITY LEVEL B
	QUALITY LEVEL C
	QUALITY LEVEL D
LOWEST QUALITY	QUALITY LEVEL E

QUALITY LEVEL "A" - INFORMATION OBTAINED BY ACTUAL PHYSICAL EXPOSURE OF TARGETED UTILITIES AND SUBSEQUENT MEASUREMENT OF THE EXPOSED PRECISE HORIZONTAL AND VERTICAL POSITION.
 QUALITY LEVEL "B" - INFORMATION OBTAINED USING GEOPHYSICAL LOCATE TECHNIQUES TO IDENTIFY THE EXISTENCE AND APPROXIMATE HORIZONTAL POSITION OF THE DESIGNATED UTILITIES.
 QUALITY LEVEL "C" - INFORMATION OBTAINED BY SURVEYING AND PLOTTING VISIBLE UTILITY FEATURES AND BY USING PROFESSIONAL JUDGMENT IN CORRELATING THIS INFORMATION TO THE QUALITY "D" INFORMATION OBTAINED.
 QUALITY LEVEL "D" - INFORMATION DERIVED FROM UTILITY RECORDS OR VERBAL RECOLLECTION.
 ALL SERVICES ARE QUALITY "D" UNLESS NOTED OTHERWISE.
 LEVEL "D" RECORD INFORMATION SHOWN ON THIS PLAN HAS BEEN PLOTTED WITH ASSE STANDARD 38-02. THE RECORDS FOUND AND PLOTTED WERE NOT FIELD VERIFIED WITHIN THE SCOPE OF THIS PROJECT. IF FURTHER VERIFICATION IS REQUIRED, IT IS SUGGESTED THAT LEVEL "A" METHODOLOGIES BE EMPLOYED.
 LOST SIGNAL - DENOTES/INDICATES A POINT WHERE Q-L-B METHODS COULD NO LONGER ASCERTAIN THE HORIZONTAL POSITION OF A FACILITY.
 QUALITY LEVEL "D" INFORMATION COMPILED FROM RECORDS PROVIDED BY: BILGROUP PROJECT NO. 14289 - DRAWING NO. 300 AND PROJECT NO. 14289 - DRAWING NO. 103.

CAUTION: CALL BEFORE YOU DIG
 THIS PLAN IS INTENDED FOR DESIGN PURPOSES ONLY. OTHER BURIED UTILITIES MAY EXIST WHICH ARE NOT SHOWN DUE TO INSUFFICIENT INFORMATION OR IMPROPER INSTALLATION. CONTACT ALL POTENTIAL OWNERS OF UNDERGROUND UTILITIES PRIOR TO CONSTRUCTION OR BREAKING GROUND.
 IT IS THE RESPONSIBILITY OF THE CONTRACTOR/BUILDER TO ENSURE THE APPROPRIATE LEGAL REQUIREMENTS ARE MET.

THIS REPORT WAS PREPARED FOR SUNCOR ENERGY INC. AND THE UNDERSIGNED ACCEPTS NO RESPONSIBILITY FOR USE BY OTHER PARTIES.

SURVEYOR'S CERTIFICATE
 I CERTIFY THAT:
 1. THIS SURVEY AND PLAN ARE CORRECT AND IN ACCORDANCE WITH THE SURVEYS ACT, THE SURVEYORS ACT AND THE REGULATIONS MADE UNDER THEM.
 2. THE SURVEY WAS COMPLETED ON SEPTEMBER 14, 2020.

2020-10-06
 DATE
 ALEC S. MANHA
 ONTARIO LAND SURVEYOR

ASSOCIATION OF ONTARIO LAND SURVEYORS
 PLAN SUBMISSION FORM
 2127511

J.D. BARNES LIMITED
 LAND INFORMATION SPECIALISTS
 140 RENFREW DRIVE, SUITE 100, MARKHAM, ON L3R 6B3
 T: (905) 477-3600 F: (905) 477-3882 www.jdbarnes.com

THIS PLAN IS NOT VALID UNLESS IT IS AN EMPLOYED ORIGINAL COPY.
 ISSUED BY THE SURVEYOR
 DRAWN BY: DB CHECKED BY: AM REFERENCE NO: 20-12-216-00
 PLOTTED: 10/08/20 DATED: 2020-10-06

PART 2 - SURVEY REPORT

DESCRIPTION OF SUBJECT PROPERTY: PART OF BLOCK 6 PLAN 4M-1566 AND PART OF LOT 3 CONCESSION 1 GEOGRAPHIC TOWNSHIP OF HUNTLEY CITY OF OTTAWA PART OF PINS 04508-0143 (LT), 04508-0181 (LT) & 04508-0108 (LT) MUNICIPAL NO. 8605 PROMENADE CAMPEAU DRIVE OWNER PIN 04508-0143 (LT): WEST OTTAWA LAND HOLDINGS INC. OWNER PIN 04508-0181 (LT): HER MAJESTY THE QUEEN IN RIGHT OF THE PROVINCE OF ONTARIO REPRESENTED BY THE MINISTER OF TRANSPORTATION FOR THE PROVINCE OF ONTARIO OWNER PIN 04508-0108 (LT): CITY OF OTTAWA	REGISTERED EASEMENTS and/or RIGHTS-OF-WAY: SUBJECT TO EASEMENT AS IN OC1776587 REMARKS: NOTE THE LOCATION OF THE POST AT THE SOUTH EAST PROPERTY CORNER. NOTE THE LOCATION OF UNDERGROUND UTILITIES ON AND SURROUNDING THE SUBJECT PROPERTY. NOTE THAT PART OF THE SUBJECT PROPERTY IS DESIGNATED AS PUBLIC HIGHWAY. COMPLIANCE WITH MUNICIPAL ZONING BY-LAWS: NOT CERTIFIED BY THIS REPORT. NOTES: AREA PIN 04508-0181 (LT): 532.9 sq. m AREA PIN 04508-0143 (LT): 3868.2 sq. m AREA PIN 04508-0108 (LT): 4664.6 sq. m
--	--

METRIC DISTANCES AND/OR COORDINATES SHOWN ON THIS PLAN ARE IN METRES AND CAN BE CONVERTED TO FEET BY DIVIDING BY 0.3048.

NOTES
 BEARINGS ARE MTM GRID, DERIVED BY REAL TIME NETWORK (RTN) OBSERVATIONS, WITH ZONE 9, WADES (CGRS) (2010).
 DISTANCES ARE GROUND AND CAN BE CONVERTED TO GRID BY MULTIPLYING BY THE COMBINED SCALE FACTOR OF 0.999907.
 ELEVATIONS SHOWN ON THIS PLAN ARE REFERRED TO GEODETIC DATUM AND ARE DERIVED FROM CITY OF OTTAWA BENCH MARK 00119883075, HAVING A PUBLISHED ELEVATION OF 90.612 METRES.

LEGEND

■	DENOTES	SURVEY MONUMENT FOUND
□	DENOTES	SURVEY MONUMENT SET
SB	DENOTES	STANDARD IRON BAR
SSB	DENOTES	SHORT STANDARD IRON BAR
IB	DENOTES	IRON BAR
MEAS	DENOTES	MEASURED
STANTEC	DENOTES	STANTEC GEOMATICS LIMITED, O.L.S.
CB	DENOTES	CATCH-BASIN
SCB	DENOTES	SIDE INLET CATCHBASIN
HW	DENOTES	HANDHOLE
MH	DENOTES	MANHOLE
SAN MH	DENOTES	SANITARY MANHOLE
STM MH	DENOTES	STORM MANHOLE
WMH	DENOTES	WATER MANHOLE
MW	DENOTES	MONITORING WELL
CONC.	DENOTES	CONCRETE
WK	DENOTES	WATER KEY
H	DENOTES	HYDRANT
LS	DENOTES	LIGHT STANDARD
MW	DENOTES	MONITORING WELL
TOS	DENOTES	TOP OF SLOPE
— SAN —	DENOTES	BOTTOM OF SANITARY SEWER
— STM —	DENOTES	BOTTOM OF STORM SEWER
— G —	DENOTES	BOTTOM OF GAS LINE
— W —	DENOTES	BOTTOM OF WATER LINE
— UE —	DENOTES	BOTTOM OF HYDRO LINE

ALL SET SSBs AND PB MONUMENTS WERE USED DUE TO LACK OF OVERBURDEN AND/OR PROXIMITY OF UNDERGROUND UTILITIES IN ACCORDANCE WITH SECTION 11 (4) OF O.R.G. 525/01.

BLOCK 1
 PLAN 4M-1566

BLOCK 1
 PLAN 4M-1554
 PIN 04508-0127 (LT)

PART 4 PLAN 4R-30499
 PIN 04508-0181 (LT)
 (CONTROLLED ACCESS HIGHWAY CLOSED BY
 ORDER-IN-COUNCIL 1382/2019 AS IN OC2154962)

BLOCK 6
 PIN 04508-0143 (LT)
 PART 1 PLAN 5R-30499
 SUBJECT TO EASEMENT AS IN OC1776587
 PLAN 4M-1566
 PALLADIUM DRIVE
 (BY BY-LAW No. 2006-124 AS IN OC587626)
 PART 7 PLAN 4R-30499
 PIN 04508-0108 (LT)
 CONCESSION 1

PART 6 PLAN 4R-30499
 PIN 04508-0165 (LT)
 ORDER-IN-COUNCIL 1982/96 AS IN IV188639