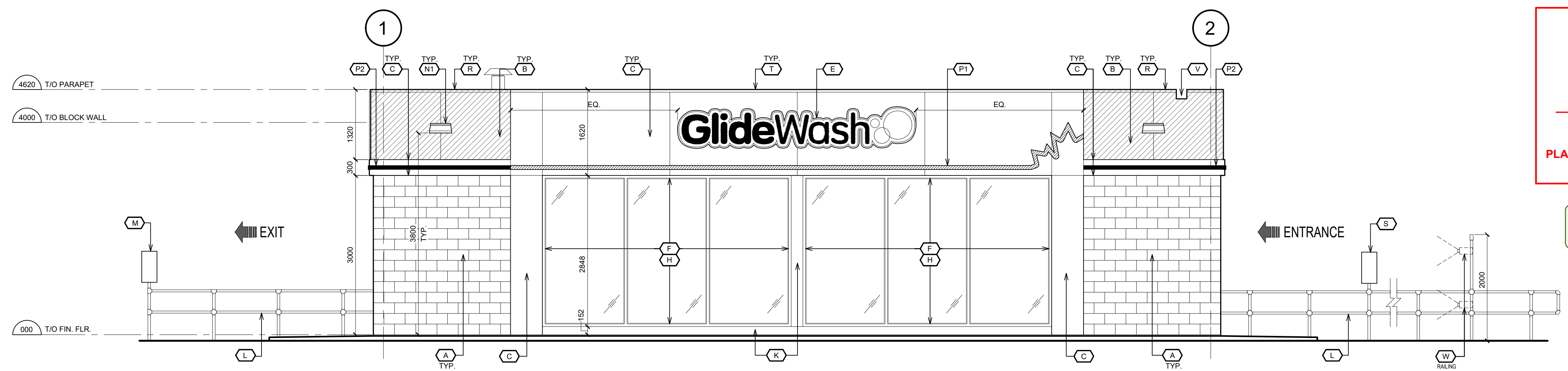


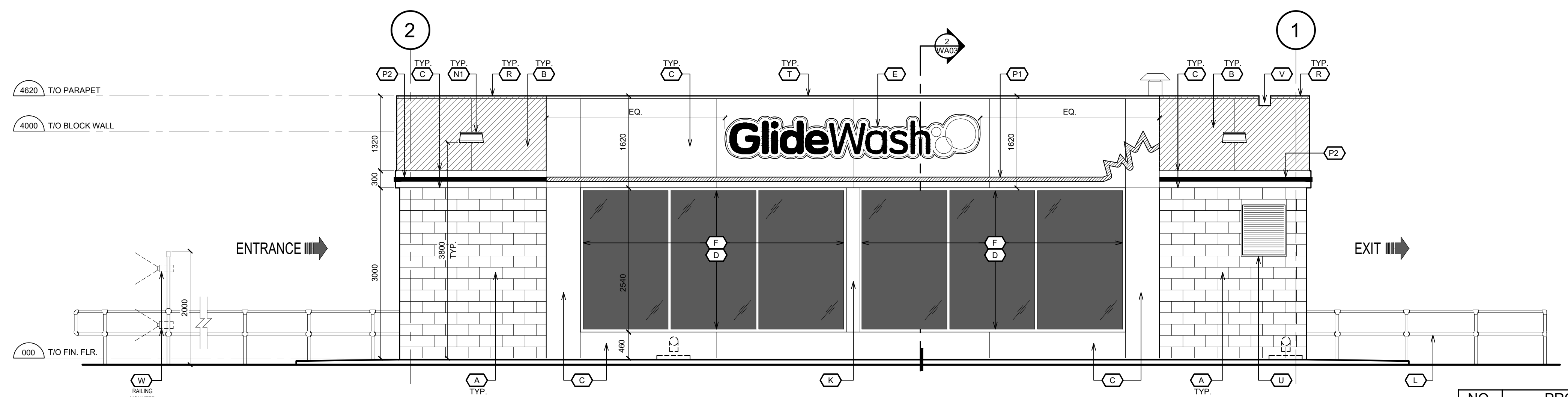
*Allison Hamlin*

ALLISON HAMLIN  
MANAGER (A), DEVELOPMENT REVIEW WEST  
PLANNING, REAL ESTATE & ECONOMIC DEVELOPMENT  
DEPARTMENT, CITY OF OTTAWA

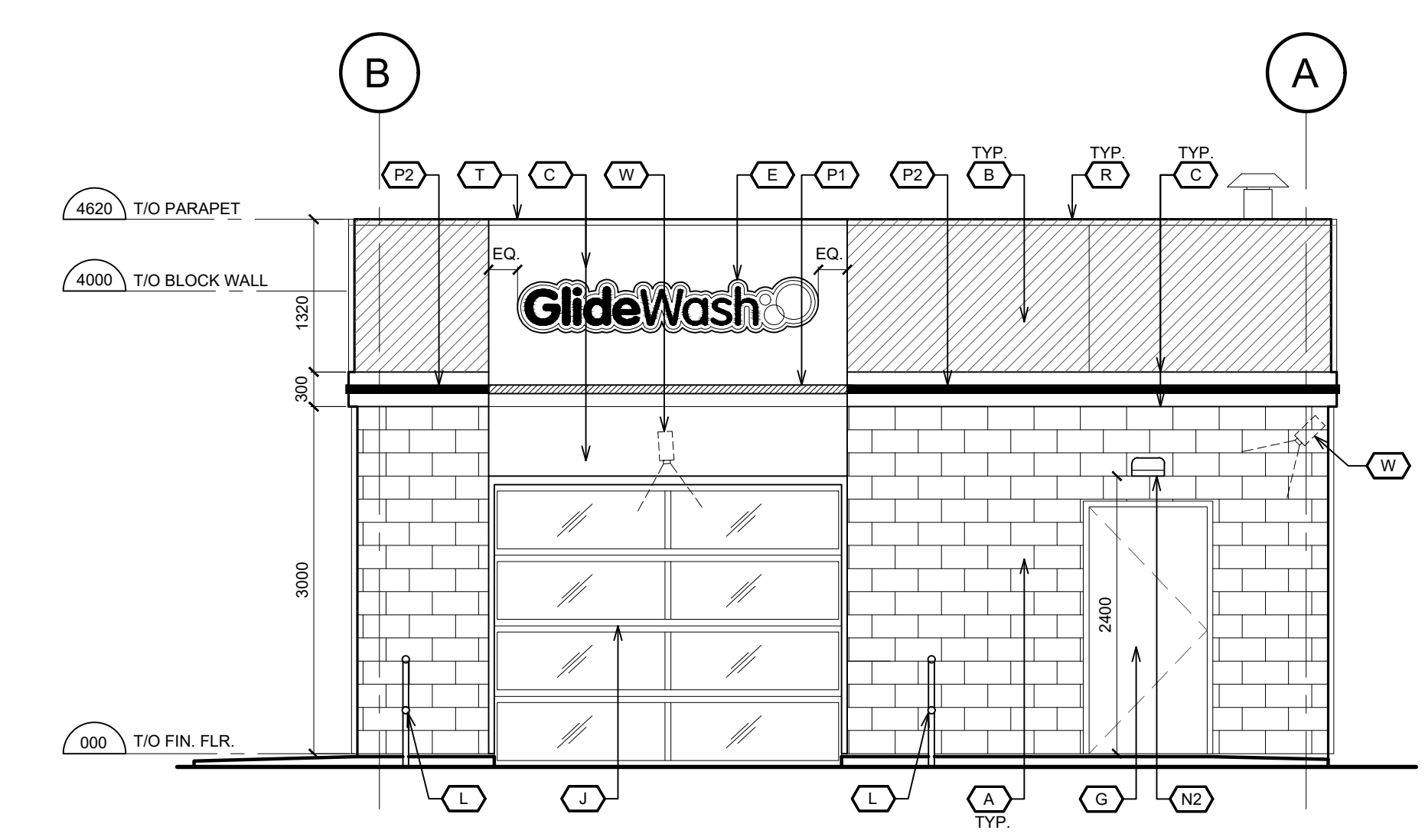
**APPROVED**  
By Allison Hamlin at 1:21 pm, Nov 23, 2023



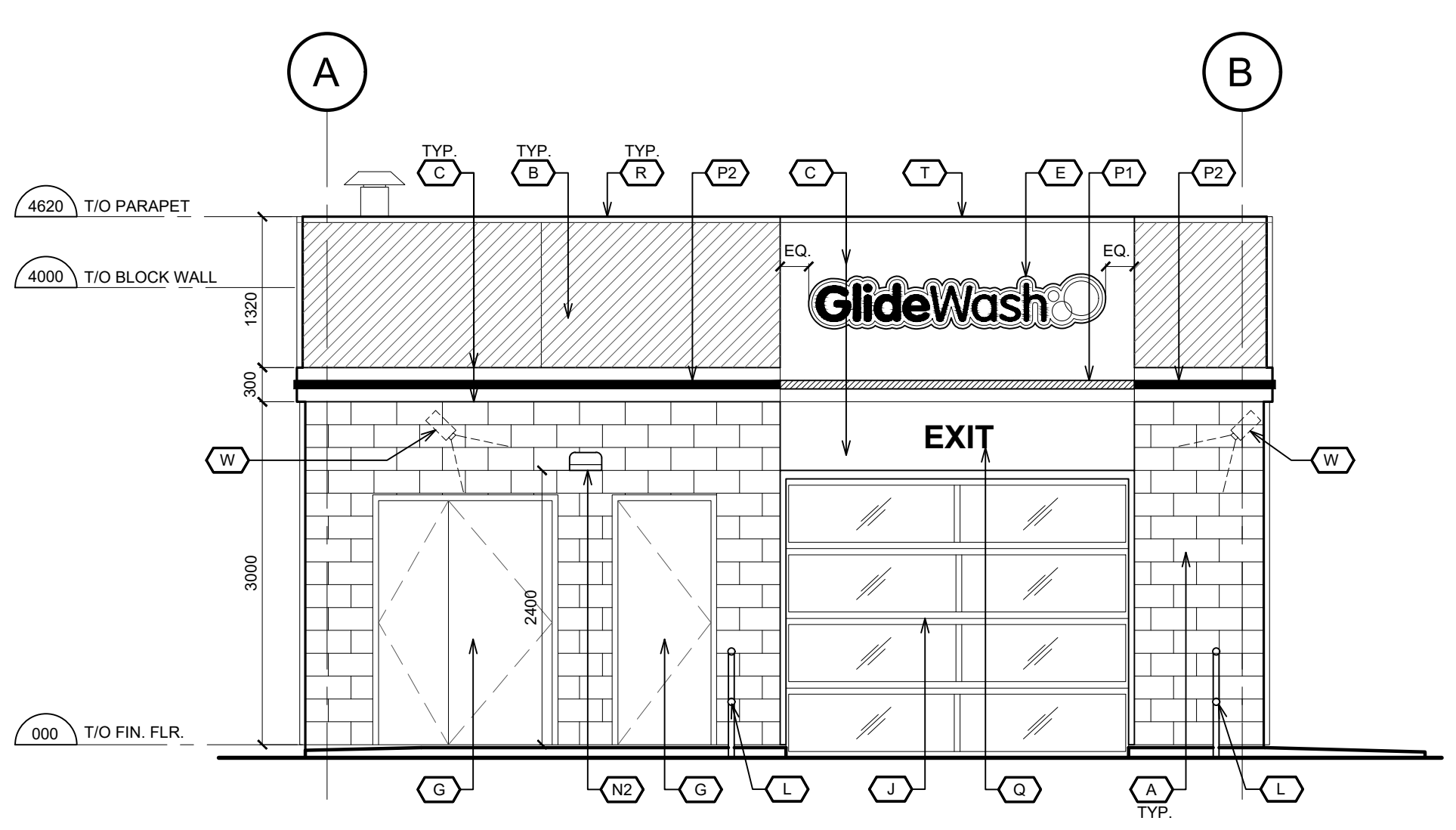
**1 SOUTH ELEVATION**



**2 NORTH ELEVATION**



**3 EAST ELEVATION**



**4 WEST ELEVATION**

NO.	PRODUCT	SPECIFICATION & COLOUR
(A)	ARCHITECTURAL WALL BLOCK	SHOULDICE DESIGNER STONE TEXTURE : <b>TEX STONE</b> COLOUR: <b>GALAXY</b> SIZE: 390mm x 190mm x 190mm H RUNNING BOND APPLICATION
(B)	ACM SYSTEM (50mm DP)	COLOUR: <b>CASTLE GRAY</b> (ALUCOBOND) OR APPROVED EQUAL
(C)	ACM SYSTEM (100mm DP)	COLOUR: <b>PCP WHITE</b> (*) STANDARD WHITE ACM IS ALUCOBOND #815W278, ALPOLIC "SAW WHITE", REYNOBOND "PROGRAM WHITE" OR EQUIVALENT MAY ALSO BE USED
(D)	SPANDREL GLASS PANEL	PPG EXTRUSION COATINGS: DURANAR COATINGS - UC43352 COLONIAL GRAY
(E)	ILLUMINATED SIGNAGE	REFER TO SHOP DRAWINGS PROVIDED BY SIGN COMPANY
(F)	WINDOW FRAMING	COLOUR: CLEAR ANODIZED
(G)	HOLLOW DOOR & FRAME	C/W PAINT COLOUR TO MATCH (A)
(H)	CLEAR GLASS	DOUBLE GLAZED
(J)	'ALASKA' POLYCARBONATE ROLL-UP DOOR BY AIRLIFT DOORS	COLOUR: CLEAR ANODIZED
(K)	ALUMINUM COVER	COLOUR: CLEAR ANODIZED (TO MATCH WINDOW FRAME)
(L)	SAFETY RAILING	GALVANIZED METAL - COLOUR : SILVER
(M)	EXIT TRAFFIC SIGNAL	TO BE SECURED AT RAILING
(N1)	WALL WASHER LIGHT FIXTURE	FC LIGHTING : <b>FCW-1036-120V-LED35K-BK-FL</b>
(N2)	WALL PAK LIGHT FIXTURE	CREE : <b>XSPW-B-WM-3ME-4L-40K-UL-BK</b>
ALL CREE, FC/SSL LIGHT FIXTURES <b>RED LEONARD ASSOCIATES</b> CONTACT : JAYME LEONARD CELL 513-702-6090 OFFICE 513-574-9500		
(P1)	ILLUMINATED RED LED LEAF BAND	COLOUR: PCP RED, PROVIDED BY SIGN COMPANY
(P2)	NON-ILLUMINATED RED BAND	COLOUR: PCP RED, PROVIDED BY SIGN COMPANY
(Q)	8" VINYL LETTER SIGN	COLOUR: PCP RED, PROVIDED BY SIGN COMPANY
(R)	PRE-FINISHED METAL FLASHING	PAINT COLOUR TO MATCH (B)
(S)	ENTRANCE TRAFFIC SIGNAL	TO BE SECURED AT RAILING
(T)	PRE-FINISHED METAL FLASHING	COLOUR : <b>PCP WHITE</b>
(U)	WEATHER PROOF INTAKE LOUVER	REFER TO MECH DWGS (COLOUR: CLEAR ANODIZED)
(V)	ROOF SCUPPER	PAINT COLOUR TO MATCH (B)
(W)	SECURITY CAMERA	FINAL INSTALLATION / POSITION TO BE SET UP BY SUNCOR TEAM ON SITE

**5 FINISH SCHEDULE**

REVISION TABLE		
REV.	DESCRIPTION	DRAWN / APP'D. DATE

ISSUE TABLE		
TO	FOR	DATE
CITY	ISSUED FOR SITE PLAN APPROVAL	20 DEC 22

METRIC  
ALL DIMENSIONS ARE IN MILLIMETRES U.N.O.. CONTRACTOR TO  
CHECK/VERIFY ALL DIMENSIONS PRIOR TO COMMENCEMENT OF WORK.  
ALL DISCREPANCIES TO BE REPORTED TO THE PROJECT DESIGNER.  
DO NOT SCALE DRAWINGS.

SEAL:

CONSULTANT:  
**K PAUL ARCHITECT INC.**  
TORONTO - VANCOUVER - OREGON  
2660 Sherwood Heights Dr. Suite 200, Oakville, Ontario, L6J 7Y8  
www.kpaularchitect.com  
(905)337-9800 fax (905)337-1986



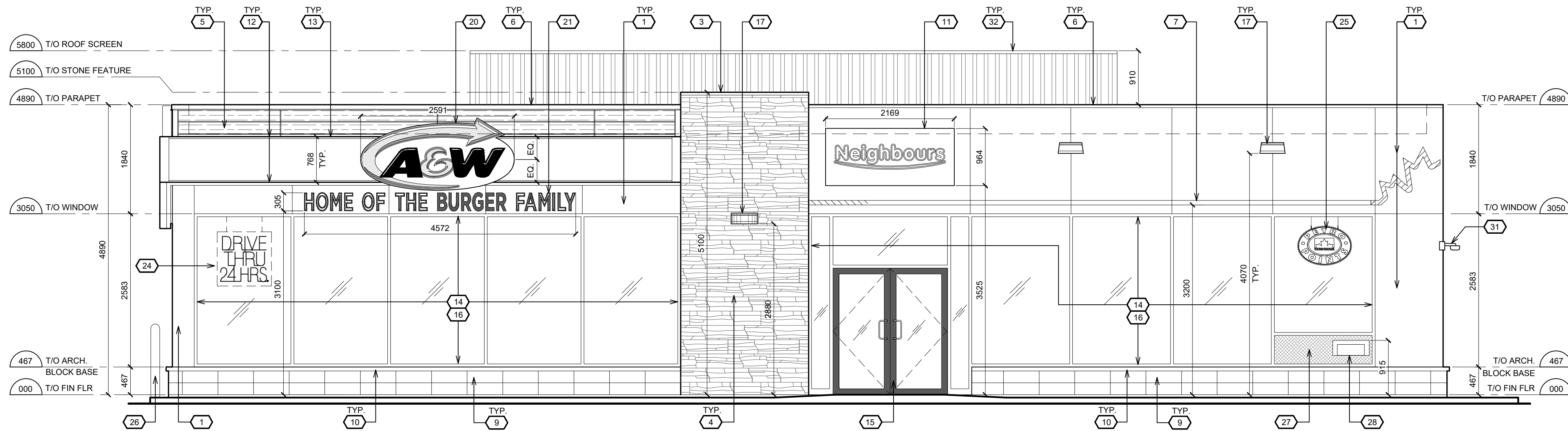
DRAWING TITLE:  
**EXTERIOR ELEVATIONS**

PROJECT:  
16M GLIDE CAR WASH  
**8605 CAMPEAU DRIVE**  
KANATA (OTTAWA), ONTARIO

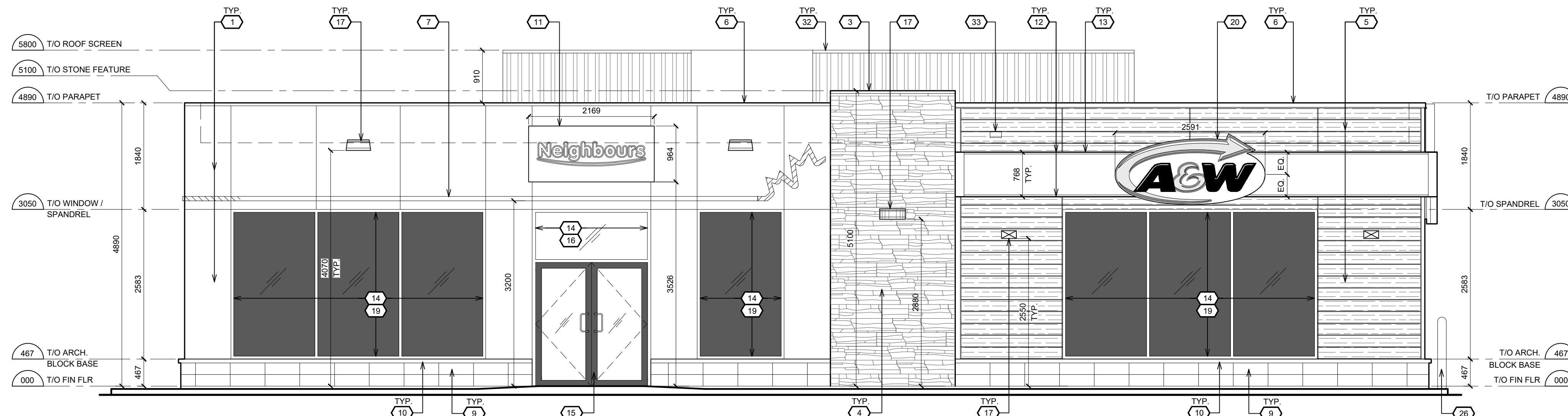
DRAWN BY: CL  
DRAWING SCALE: 1:50  
DATE DRAWN: DEC 2022  
CHECKED BY:  
APPROVED BY:

CAD INFO:  
SHEET SIZE  
D (559 x 864)  
PETRO-CANADA  
CAD FILE No.  
CONSULTANT  
CAD FILE No.  
PLOT SCALE  
PLOT DATE  
PLOT CONFIGURATION

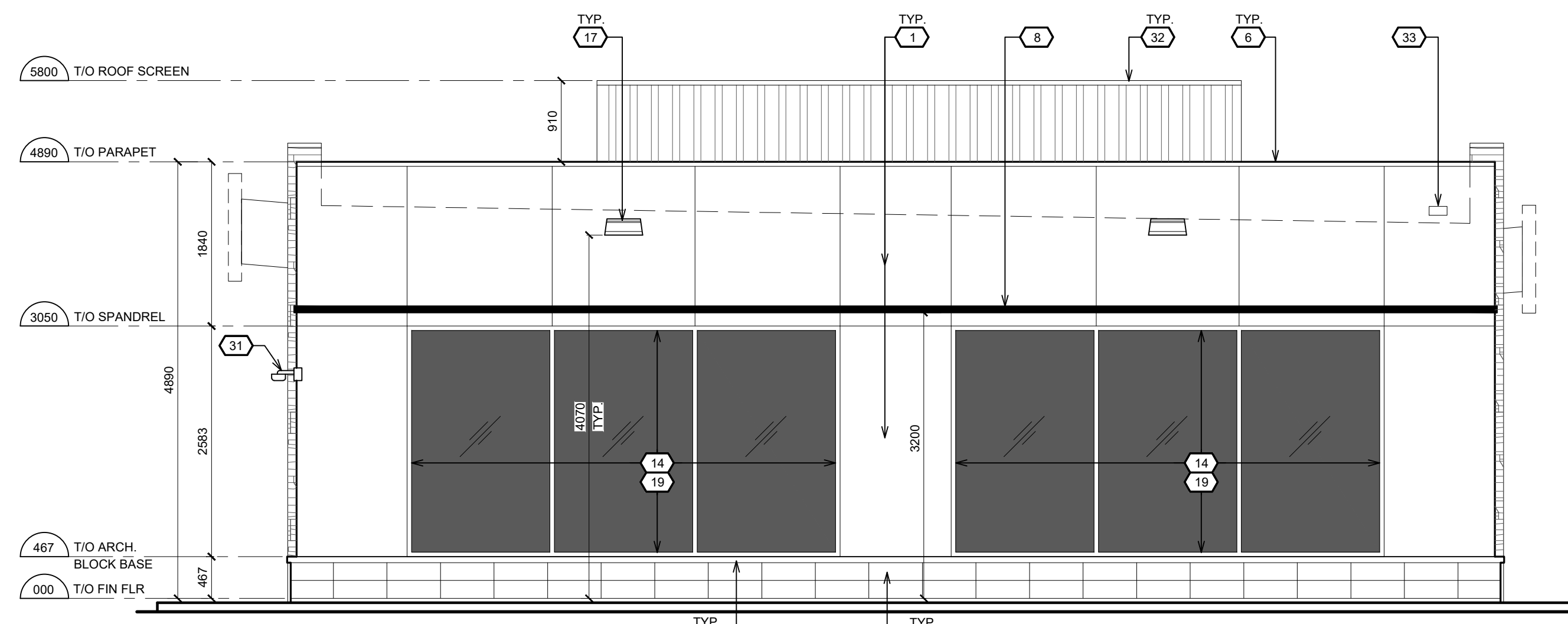
STD No./OUTLET No.:  
**10565** **WA02**



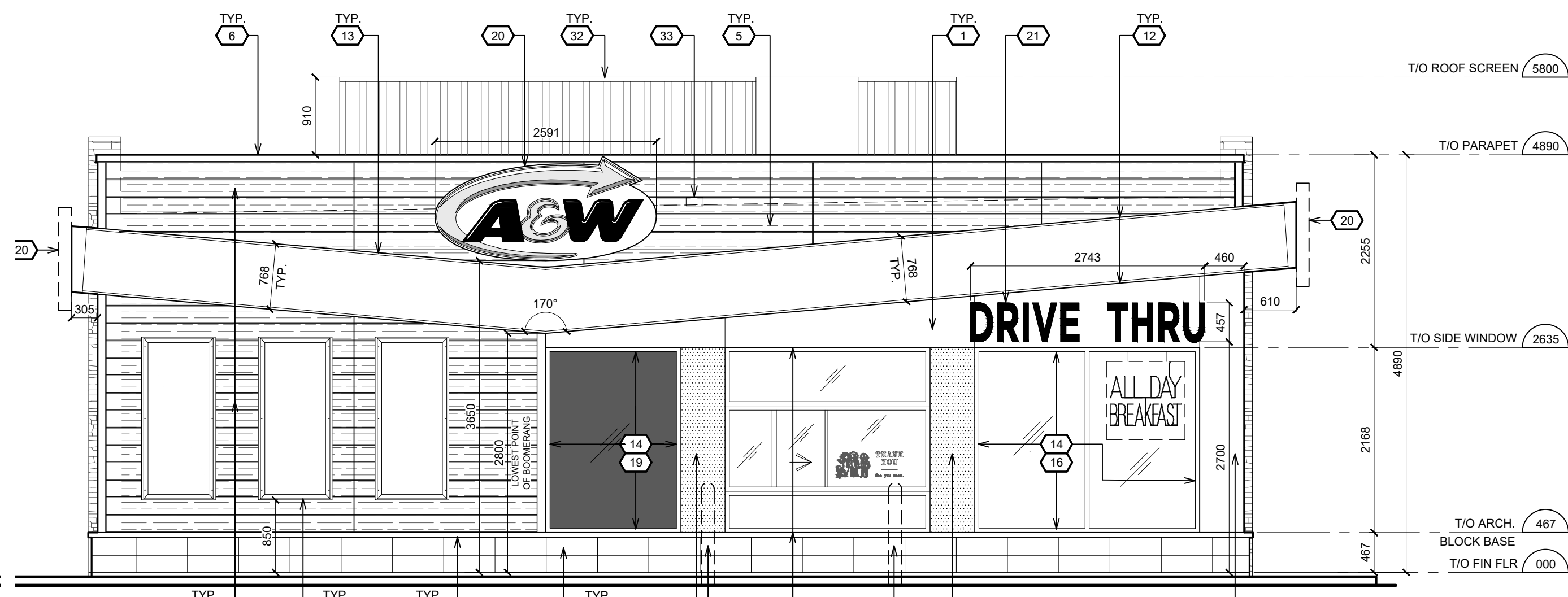
1 EAST ELEVATION



2 WEST ELEVATION



3 NORTH ELEVATION



4 SOUTH ELEVATION

NO.	PRODUCT	SPECIFICATION & COLOUR
1	ACM WALL PANEL SYSTEM	COLOUR : PCP WHITE
2	ALUMINUM COVER	COLOUR : CLEAR ANODIZED
3	METAL FLASHING (STONE WALL)	PAINT COLOUR : BENJAMIN MOORE HC-85 FAIRVIEW TAUPE
4	CULTURED STONE WALL FINISH	PRO-FIT ALPINE LEDGESTONE COL. PHEASANT 420117
5	PRE-FINISHED WOOD GRAIN	KNOTWOOD - KED150 COLOUR : ATLANTIC CEDAR (6" DECKING BOARD)
6	METAL FLASHING (PARAPET)	COLOUR TO MATCH : PCP WHITE
7	ILLUMINATED LED RED LEAF BAND	75mm CONTINUOUS ILLUMINATED LED RED LEAF BAND
8	NON-ILLUMINATED RED BAND	75mm CONTINUOUS NON-ILLUMINATED RED BAND
9	ARCHITECTURAL BLOCK BASE	SHOULDICE DESIGNER STONE TEXTURE : TEK-STONE COLOUR : GALAXY SIZE: 390mm x 90mm x 190mm H. STACKED APPLICATION
10	ARCHITECTURAL SILL CAP	SHOULDICE DESIGNER STONE 224 SLOPED SILL COLOUR : GALAXY
11	INTERNALLY ILLUMINATED SIGN (C-STORE)	
12	ILLUMINATED BOOMERANG LIGHT BOX	COLOUR : A&W ORANGE
13	FLASHING (A&W BOOMERANG)	COLOUR TO MATCH : A&W ORANGE
14	ALUMINUM WINDOW FRAMING	COLOUR : CLEAR ANODIZED
15	ALUMINUM DOOR LEAF FRAME	COLOUR : BLACK ANODIZED
16	THERMAL PANE GLASS	DOUBLE GLAZED
17	EXTERIOR LIGHT FIXTURE	LED FIXTURE, FIXTURE COLOUR: BLACK
18	DRIVE-THRU WINDOW (A&W)	COLOUR : CLEAR ANODIZED
19	SPANDREL GLASS PANEL	PPG EXTRUSION COATINGS: DURANAR COATINGS - UC4352 COLONIAL GRAY
20	ILLUMINATED A&W LOGO SIGN	
21	NON ILLUMINATED A&W LETTER SIGN	
22	A&W POSTER SNAP FRAME	SURFACE MOUNTED
24	A&W 'DRIVE-THRU / BREAKFAST OPEN' ILLUMINATED SIGN	INTERIOR SUSPENDED
25	ILLUMINATED PETRO-POINTS SIGN	INTERIOR SUSPENDED
26	CONC. FILLED BOLLARD	COLOUR : A&W ORANGE
27	INSULATED PANEL	COLOUR : CLEAR ANODIZED
28	SECURITY DRAWER	COLOUR : SILVER ALUMINUM
31	PASS-THRU 360 CAMERA	
32	METAL CLAD ROOF SCREEN	COLOUR : WHITE TO MATCH 1

5 EXTERIOR FINISH SCHEDULE

*Allison Hamlin*  
**ALLISON HAMLIN**  
 MANAGER (A), DEVELOPMENT REVIEW WEST  
 PLANNING, REAL ESTATE & ECONOMIC DEVELOPMENT  
 DEPARTMENT, CITY OF OTTAWA

**APPROVED**  
 By Allison Hamlin at 1:21 pm, Nov 23, 2023

REVISION TABLE		
REV.	DESCRIPTION	DRAWN / APP'D. DATE

ISSUE TABLE		
TO	FOR	DATE
CITY	ISSUED FOR SITE PLAN APPROVAL	20 DEC 22
CITY	RE-ISSUED FOR SITE PLAN APPROVAL	04 APR 23

METRIC  
 ALL DIMENSIONS ARE IN MILLIMETRES U.N.O. CONTRACTOR TO CHECK/VERIFY ALL DIMENSIONS PRIOR TO COMMENCEMENT OF WORK. ALL DISCREPANCIES TO BE REPORTED TO THE PROJECT DESIGNER. DO NOT SCALE DRAWINGS.

CONSULTANT:  
  
 K PAUL ARCHITECT INC.  
 TORONTO • VANCOUVER • ORLANDO  
 2600 Sherwood Heights Dr. Suite 200, Oakville, Ontario, L6J 7Y8  
 www.kpaularchitect.com  
 (905)337-9800 fax (905)337-1986

**PETRO-CANADA**  
 A Suncor business

DRAWING TITLE:  
**C-STORE  
 EXTERIOR ELEVATIONS**

PROJECT:  
 NEIGHBOURS N3000AW  
**8605 CAMPEAU DRIVE  
 KANATA (OTTAWA), ONTARIO**

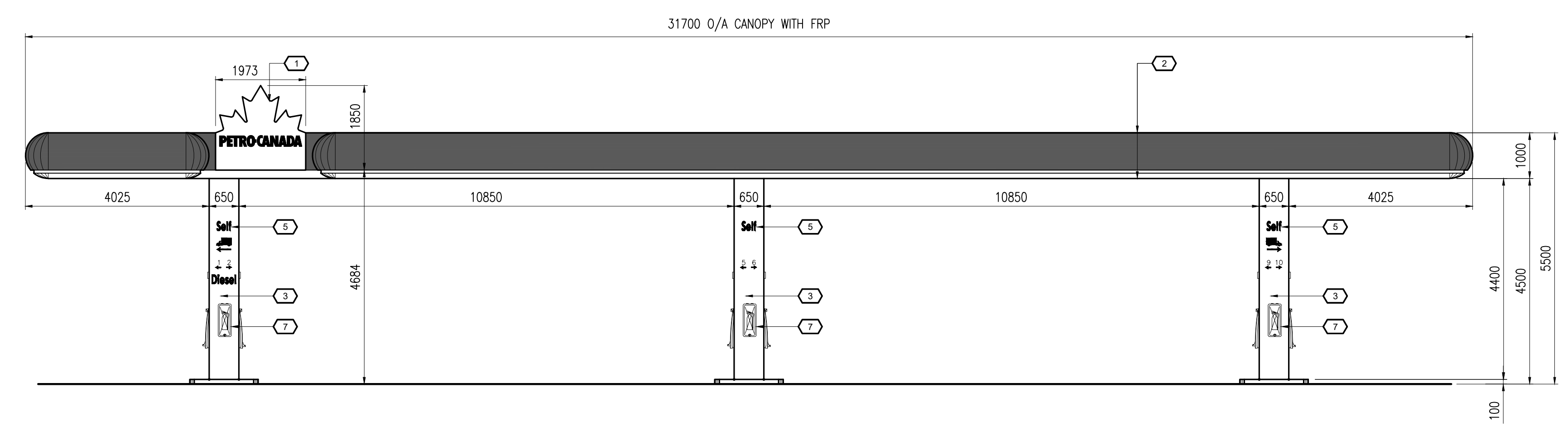
DRAWN BY:	CL	CAD. INFO:	CL
DRAWING SCALE:	AS NOTED	SHEET SIZE:	D (559 x 864)
DATE DRAWN:	APR 2023	PETRO-CANADA	CAD FILE No.
CHECKED BY:		CONSULTANT	CAD FILE No.
APPROVED BY:		PLOT SCALE:	
		PLOT DATE:	
		PLOT CONFIGURATION:	

STD No./OUTLET No.  
**10565** **A2**

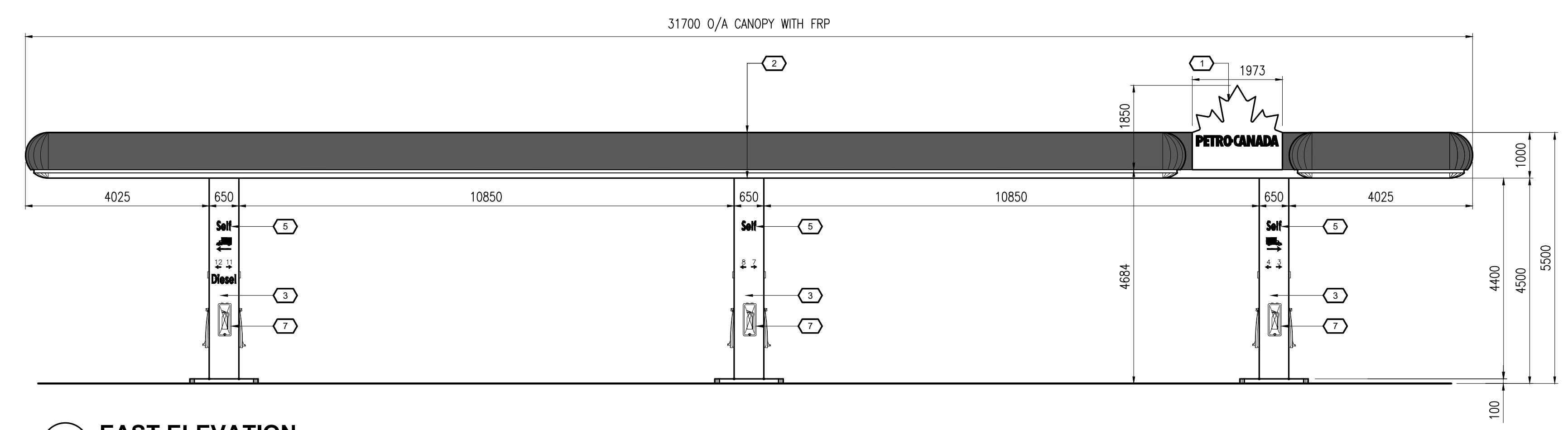
*Allison Hamlin*

ALLISON HAMLIN  
 MANAGER (A), DEVELOPMENT REVIEW WEST  
 PLANNING, REAL ESTATE & ECONOMIC DEVELOPMENT  
 DEPARTMENT, CITY OF OTTAWA

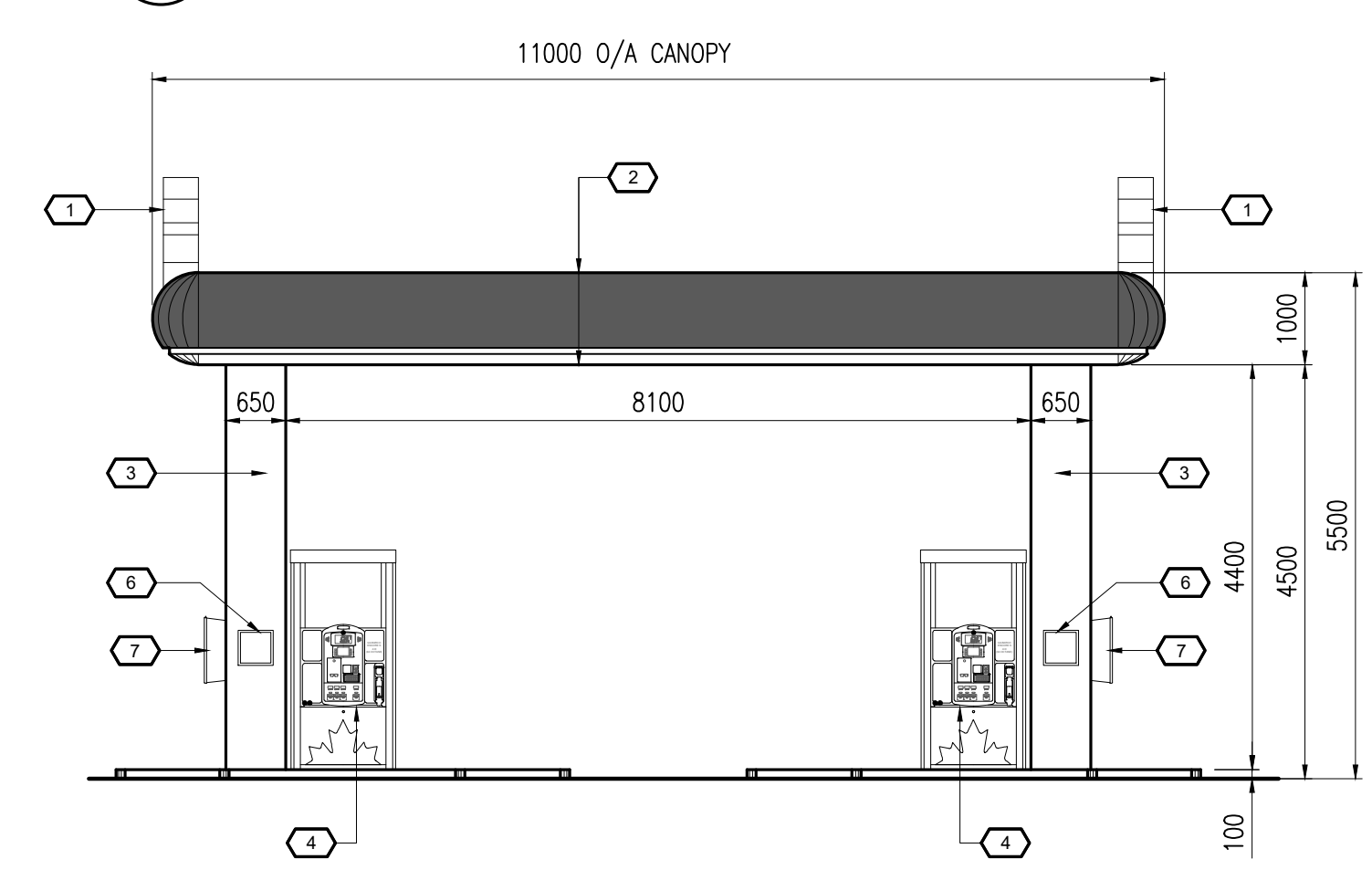
**APPROVED**  
 By Allison Hamlin at 1:21 pm, Nov 23, 2023



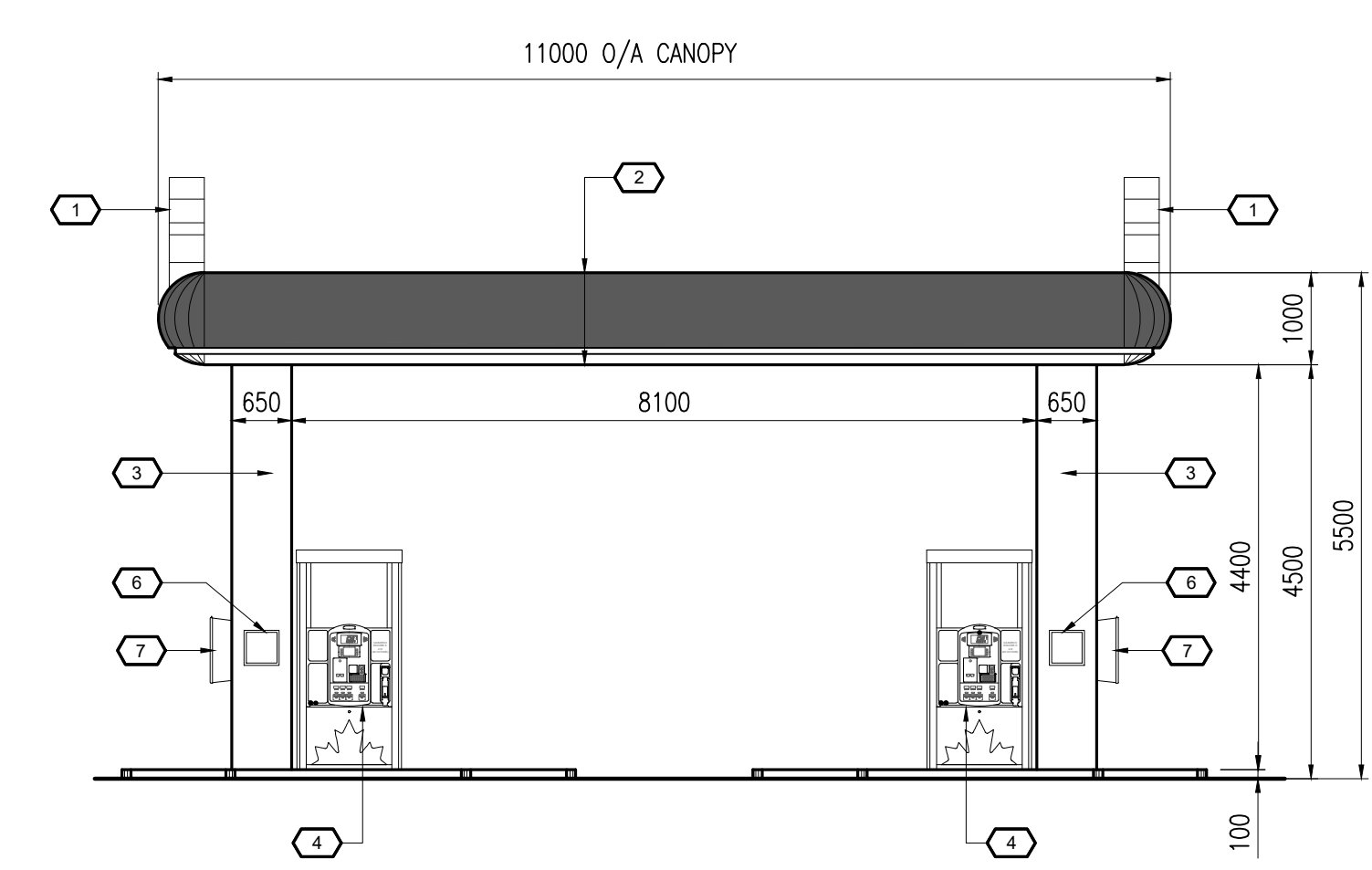
**1 WEST ELEVATION**



**2 EAST ELEVATION**



**3 NORTH ELEVATION**



**4 SOUTH ELEVATION**

NO.	PRODUCT	SPECIFICATION & COLOUR
1	ILLUMINATED SIGNAGE	SUPPLIED BY TRANSWORLD
2	FIBRE REINFORCED PLASTIC	1000mm HALF ROUND FRP WITH INTEGRAL REVEAL GLOSS RED ABOVE REVEAL AND GLOSS WHITE BELOW C/W RED LED LIGHT STRIP IN REVEAL
3	ALUMINUM COMPOSITE METAL PANEL	COLOUR: PCP WHITE
4	GAS DISPENSER UNIT	
5	PIN LETTER / GRAPHIC	COLOUR: MATTE BLACK
6	SNAP FRAME UNITS	
7	FIRE EXTINGUISHER	1 PER CHANNEL

**5 FINISH SCHEDULE**  
 SCALE: N.T.S.

REV.	DESCRIPTION	DRAWN / APP'D.	DATE

TO	FOR	DATE
CITY	ISSUED FOR SITE PLAN APPROVAL	20 DEC 22
CITY	RE-ISSUED FOR SITE PLAN APPROVAL	04 APR 23

**METRIC**  
 ALL DIMENSIONS ARE IN MILLIMETRES U.N.O. CONTRACTOR TO CHECK/VERIFY ALL DIMENSIONS PRIOR TO COMMENCEMENT OF WORK. ALL DISCREPANCIES TO BE REPORTED TO THE PROJECT DESIGNER. DO NOT SCALE DRAWINGS.

CONSULTANT:  
**K. PAUL ARCHITECT INC.**  
 TORONTO • VANCOUVER • ORLANDO  
 2660 Sherwood Heights Dr. Suite 200, Oakville, Ontario, L6J 7Y8  
 www.kpaularchitect.com  
 (905) 337-9800 fax (905) 337-1986



DRAWING TITLE:  
**GAS BAR CANOPY ELEVATIONS**

PROJECT:  
 NEIGHBOURS N3000AW  
**8605 CAMPEAU DRIVE**  
 KANATA (OTTAWA), ONTARIO

DRAWN BY: CL  
 SHEET SIZE: D (559 x 864)  
 DRAWING SCALE: 1:75  
 PETRO-CANADA  
 CAD FILE No.  
 DATE DRAWN: APR 2023  
 CONSULTANT  
 CAD FILE No.  
 CHECKED BY:  
 PLOT SCALE  
 APPROVED BY:  
 PLOT DATE  
 PLOT CONFIGURATION

STD No./OUTLET No.  
**10565**  
**A3**