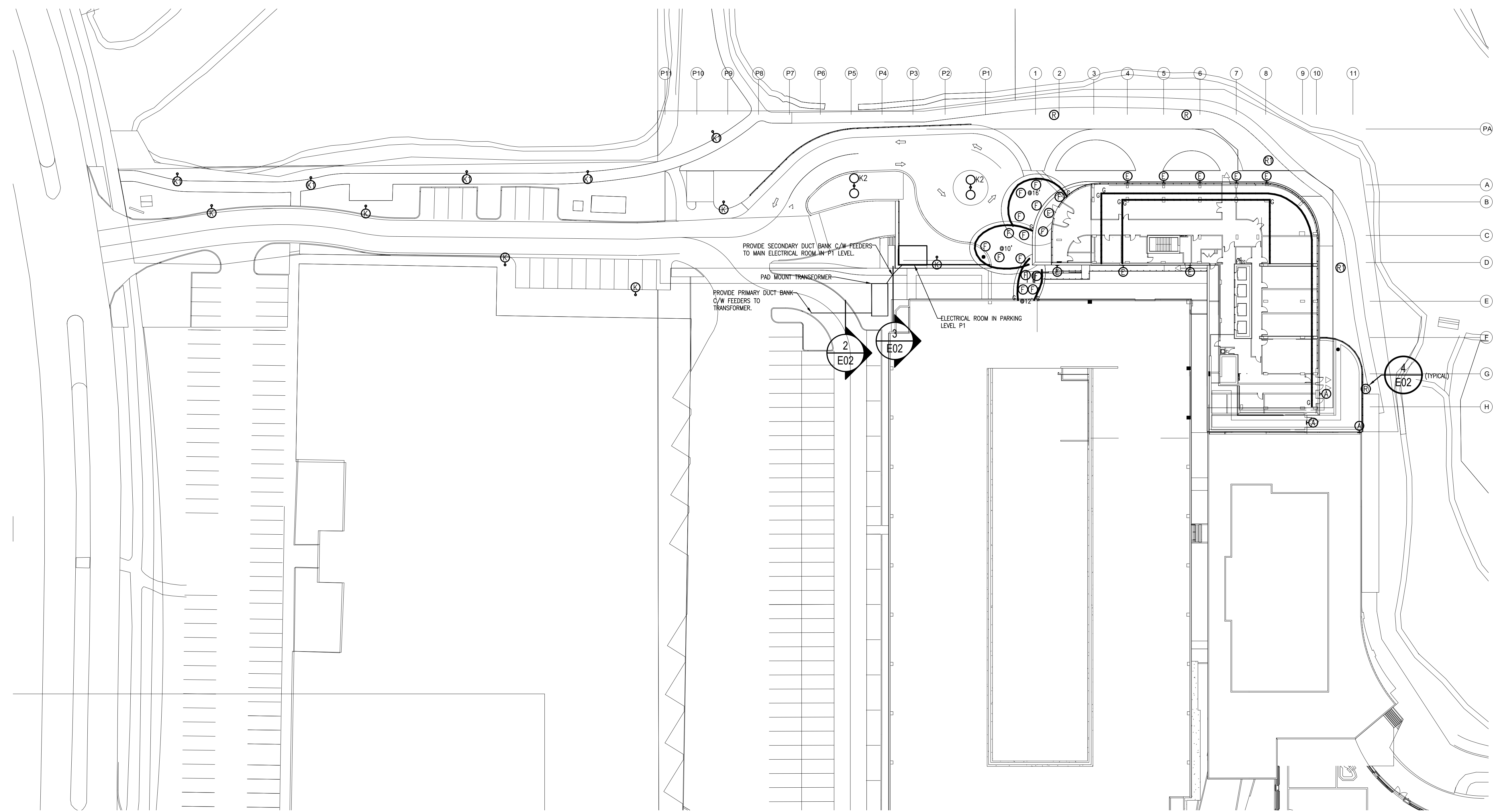


Client



DATE	REVISION	REF
2021-10-04	ISSUED FOR SITE PLAN APPROVAL	-
2021-07-20	ISSUED FOR HYDRO OTTAWA	-

THE ENGINEER WAIVES ANY AND ALL RESPONSIBILITY AND LIABILITY FOR PROBLEMS WHICH ARISE FROM FAILURE TO FOLLOW THESE PLANS, SPECIFICATIONS AND THE DESIGN INTENT THEY CONVEY, OR FOR PROBLEMS WHICH ARISE FROM OTHER FAILURE TO OBTAIN AND / OR FOLLOW THE ENGINEER'S GUIDANCE WITH RESPECT TO ANY ERRORS, OMISSIONS, INCONSISTENCIES, AMBIGUITIES OR CONFLICTS WHICH ARE ALLEGED.

THIS DRAWING IS THE PROPERTY OF GOODKEY WEEDMARK & ASSOCIATES LIMITED AND ALL COPYRIGHTS ARE RESERVED. NO USE OF THIS DRAWING MAY BE MADE WITHOUT EXPRESS WRITTEN CONSENT.

DO NOT SCALE DRAWINGS

L'INGÉNIEUR DÉCLINE TOUTE RESPONSABILITÉ DÉCOULANT DE PROBLÈMES FAISANT SUITE AU NON RESPECT DES PLANS, DES SPÉCIFICATIONS ET DE L'INTENTION DU CONCEPT QU'ILS INDIQUENT OU DE TOUTS LES PROBLÈMES POUVANT RÉSULTER DU DÉFAUT D'OBTENIR ET / OU DE SUIVRE LES CONSEILS DE L'INGÉNIEUR EN CE QUI CONCERNE LES ERREURS, OMISSIONS, INCONSISTENCES, AMBIGUITÉS OU CONFLITS ALLÉGUÉS.

CE Dessin est la propriété littéraire de Goodkey Weedmark & Associates Limited et tous les droits sont réservés. L'utilisation est interdite sans le consentement écrit de l'auteur.

NE PAS MESURER LES Dessins à l'échelle

**Goodkey Weedmark**  
Consulting Engineers

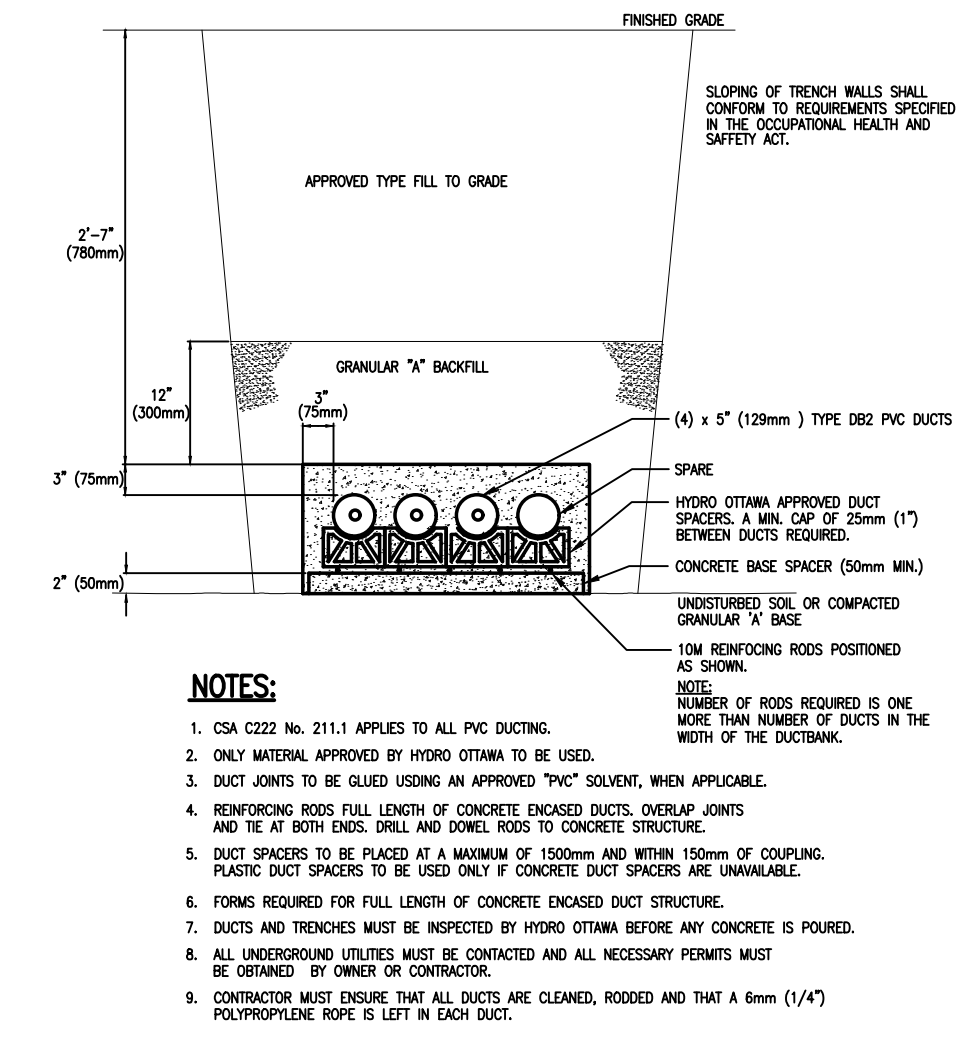
GOODKEY WEEDMARK & ASSOCIATES LIMITED  
1688 Woodward Dr. Ottawa Ontario Canada K2C 3R8  
613 727-5111 Voice 613 727-5115 Fax www.gwal.com Web

Project north  
Nord du projet

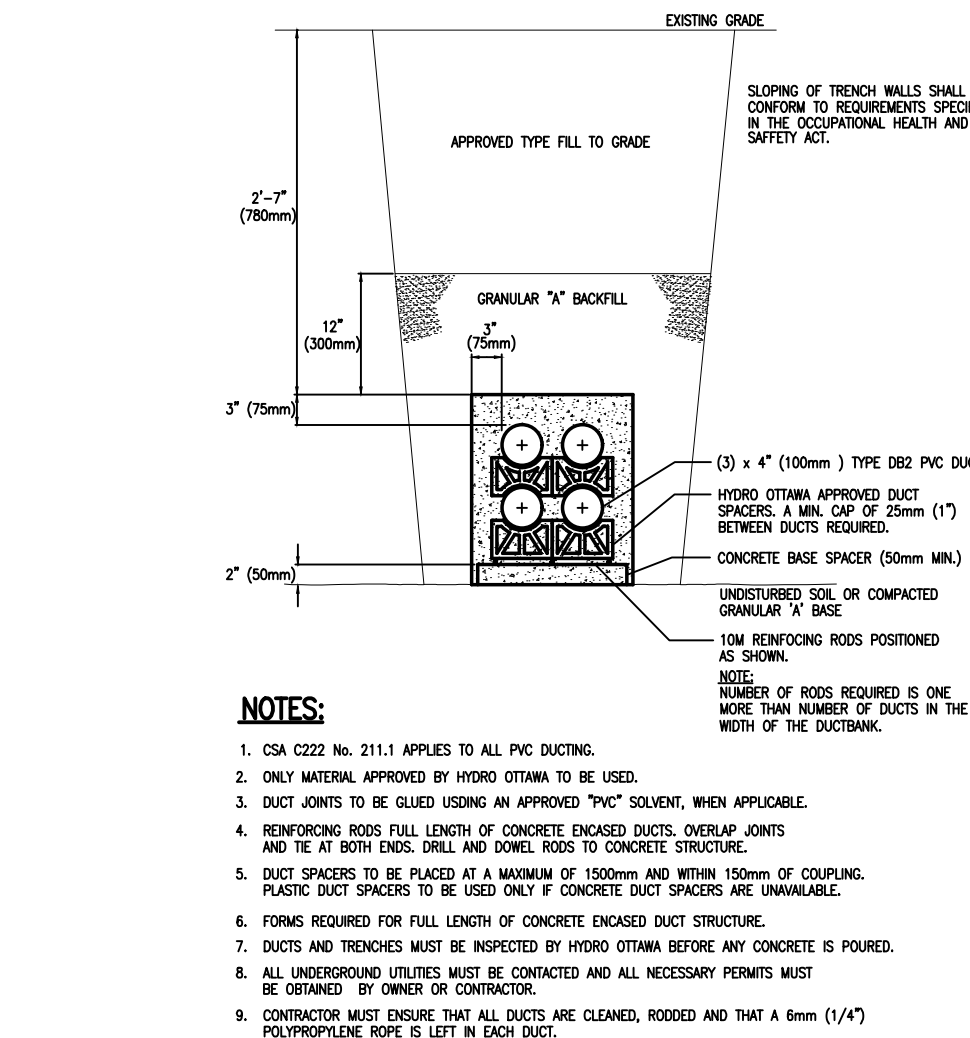
Seal/Scell

LICENSED PROFESSIONAL ENGINEER  
H. ROMANI  
100508102  
OCT 4  
PROVINCE OF ONTARIO

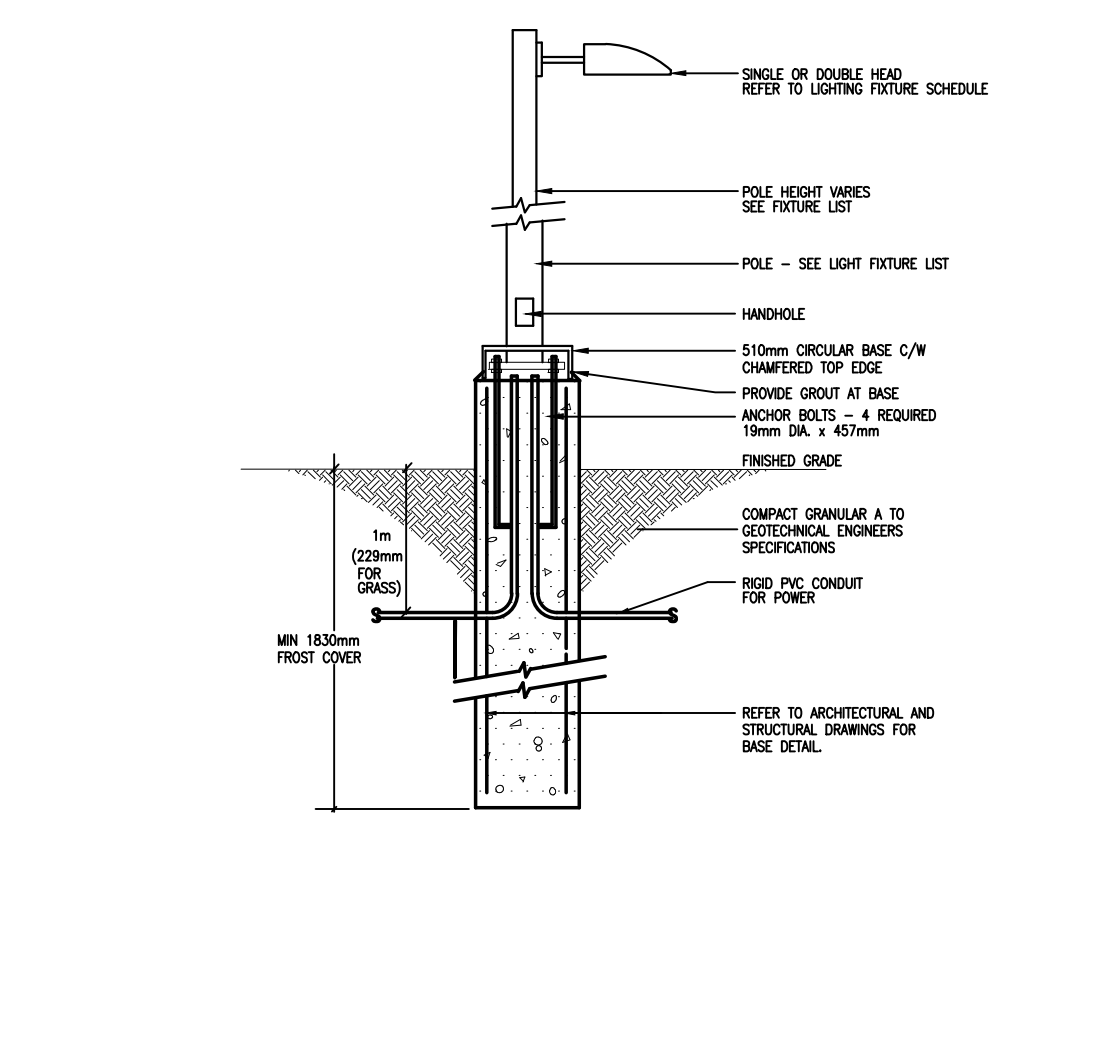
1 ELECTRICAL LAYOUT-SITE PLAN  
1:400



2 4-CELL PRIMARY CONCRETE DUCTBANK  
E02 N.T.S.



3 4-CELL CONCRETE DUCTBANK (SECONDARY)  
E02 N.T.S.



4 TYPICAL BASE DETAIL FOR EXTERIOR LIGHT STANDARD  
E02 N.T.S.

TYPE	DESCRIPTION	CATALOG NUMBER	LAMPS PER FIXTURE			VOLT	MOUNTING	REMARKS
			TYPE	WATTS	COLOUR			
A	EXTERIOR LIGHT LED WALL MOUNTED FIXTURE	BECA USA 2421BK3	LED	11	3000K	120	SURFACE	C/W ACCESSORIES MOUNTED @ 15'
E	EXTERIOR LIGHT LED WALL MOUNTED FIXTURE	BECA USA 33817K3	LED	17	3000K	120	SURFACE	C/W ACCESSORIES MOUNTED @ 15'
F	AMENITIES EXTERIOR LIGHT LED SEMI-RECESSED CEILING DOWNLIGHTS	BECA USA 5694K3	LED	31	3000K	120	RECESSED	C/W ACCESSORIES MOUNTED HEIGHT STATED ON DRAWING
G	AMENITIES EXTERIOR LIGHT LED CEILING DOWNLIGHTS	BECA USA ACL34LH40UHE V.1 & ACL54LH40UHE	LED	38.5	3000K	120	RECESSED	C/W ACCESSORIES MOUNTED HEIGHT STATED ON DRAWING
K	EXTERIOR LIGHT LED POLE MOUNTED FIXTURE	LOUIS POULSEN XPERI LED HI SYMS N UP 3000K US	LED	81	3000K	347	POLE	C/W ACCESSORIES MOUNTED @ 20'
K1	EXTERIOR LIGHT LED POLE MOUNTED FIXTURE	LOUIS POULSEN XPERI LED HI ASY3 N UP 3000K US	LED	81	3000K	347	POLE	C/W ACCESSORIES MOUNTED @ 20'
K2	EXTERIOR LIGHT LED POLE MOUNTED FIXTURE	LOUIS POULSEN XPERI LED HI ASY3 N UP 3000K US	LED	81	3000K	347	POLE	C/W ACCESSORIES MOUNTED @ 19.5'
R	EXTERIOR LIGHT LED POLE MOUNTED FIXTURE	LITHONIA LIGHTING RADPT P3 30K PATH	LED	54	3000K	347	POLE	C/W ACCESSORIES MOUNTED @ 15'
R1	EXTERIOR LIGHT LED POLE MOUNTED FIXTURE	LITHONIA LIGHTING RADPT P3 30K PATH	LED	54	3000K	347	POLE	C/W HOUSING SHIELD MOUNTED @ 15'

Project/Projet  
BROOKSTREET APARTMENTS  
525 LEGGET DRIVE  
KANATA ON K2K 2W2

Drawing title/Titre du dessin  
ELECTRICAL SITE PLAN

Scale  
Echelle  
1:100

Project no./No. du projet  
2020-610

Design by  
Compu par  
H.ROMANI

Drawn by  
Dessiné par  
L.ALI

Reviewed by  
Examiné par  
H.ROMANI

Date  
Date  
OCTOBER 2020

Revision no.  
Acad file/Fichier:  
-

**E02**

OF