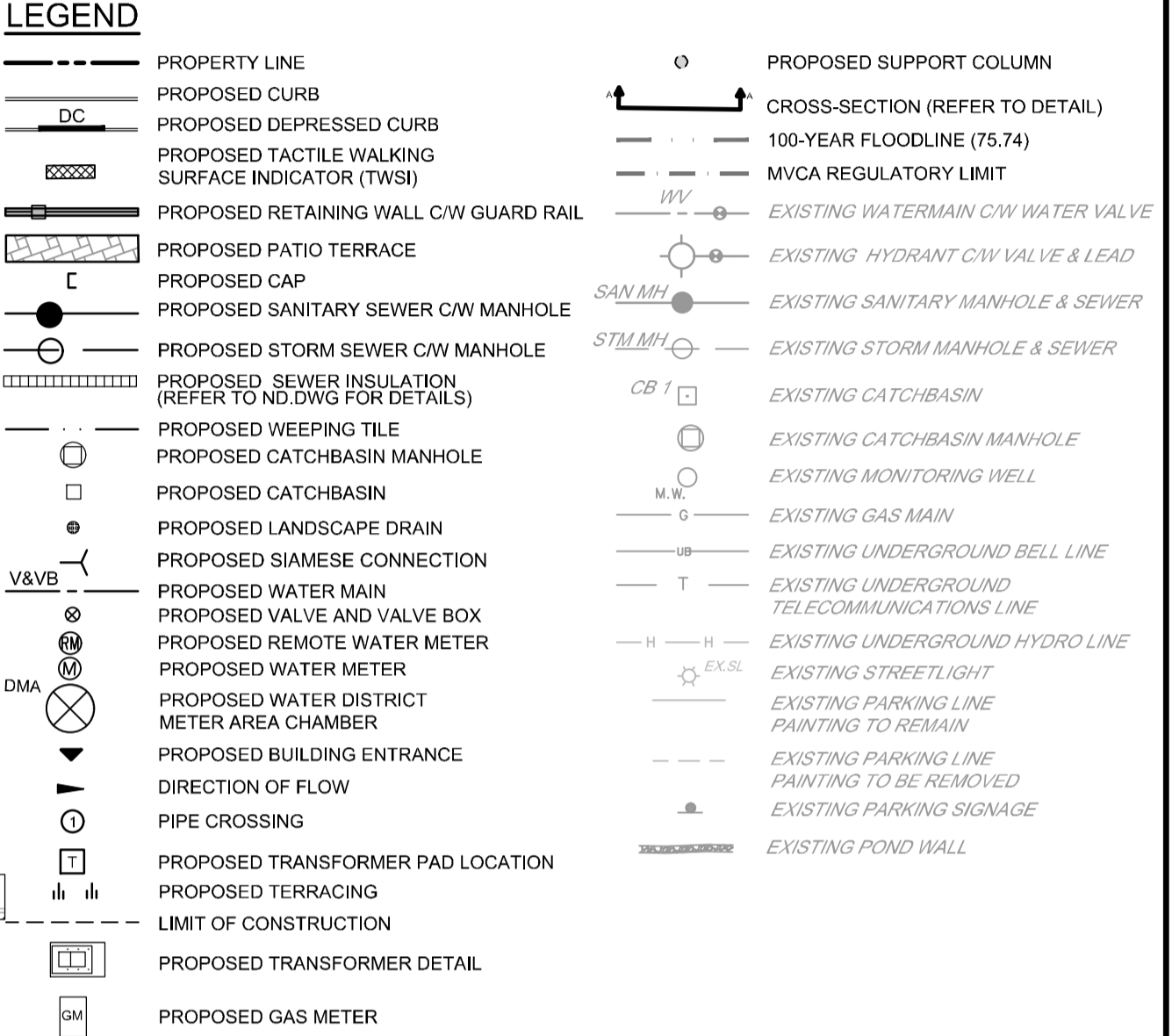
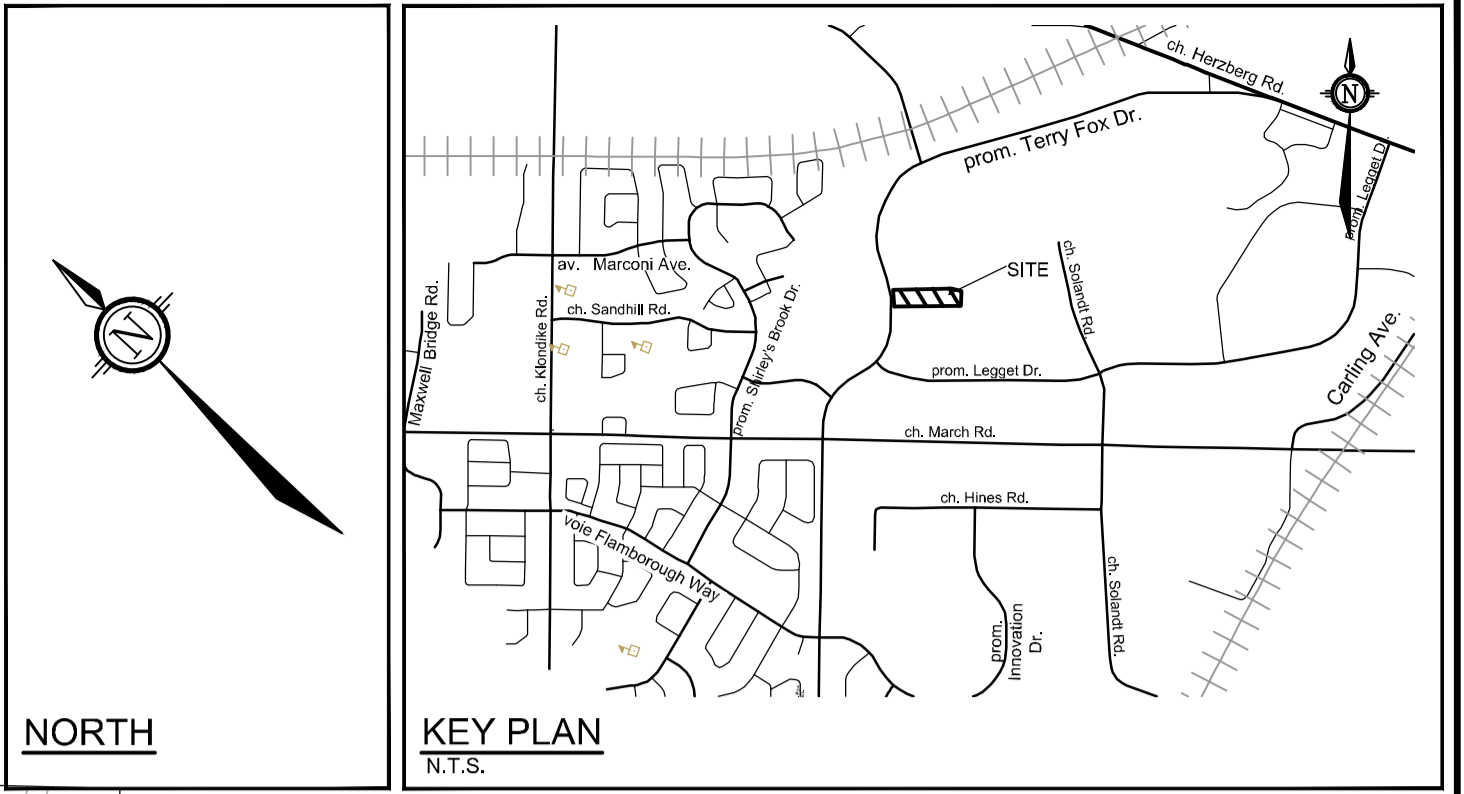


*All Hamlin*

**ALLISON HAMLIN**  
**MANAGER (A), DEVELOPMENT REVIEW WEST**  
**PLANNING, REAL ESTATE & ECONOMIC DEVELOPMENT**  
**DEPARTMENT, CITY OF OTTAWA**

**APPROVED**  
 By Allison Hamlin at 10:46 pm, Oct 12, 2022



MANHOLE ID	SIZE (mm)	T/G ELEV (m)	INVERT (m)
CBMH110	1200mmØ	75.55	SW=74.29 NW=74.15
STM MH 101	2400mmØ	75.72	SE=73.42 NE=73.38
STM MH 102	2400mmØ	75.70	SE=73.30 SW=73.33
STM MH 103	2400mmØ	75.30	NW=73.24 E=73.22
STM MH 104	2400mmØ	75.74	SE=73.87 SW=73.52 NW=73.51 NE=74.68

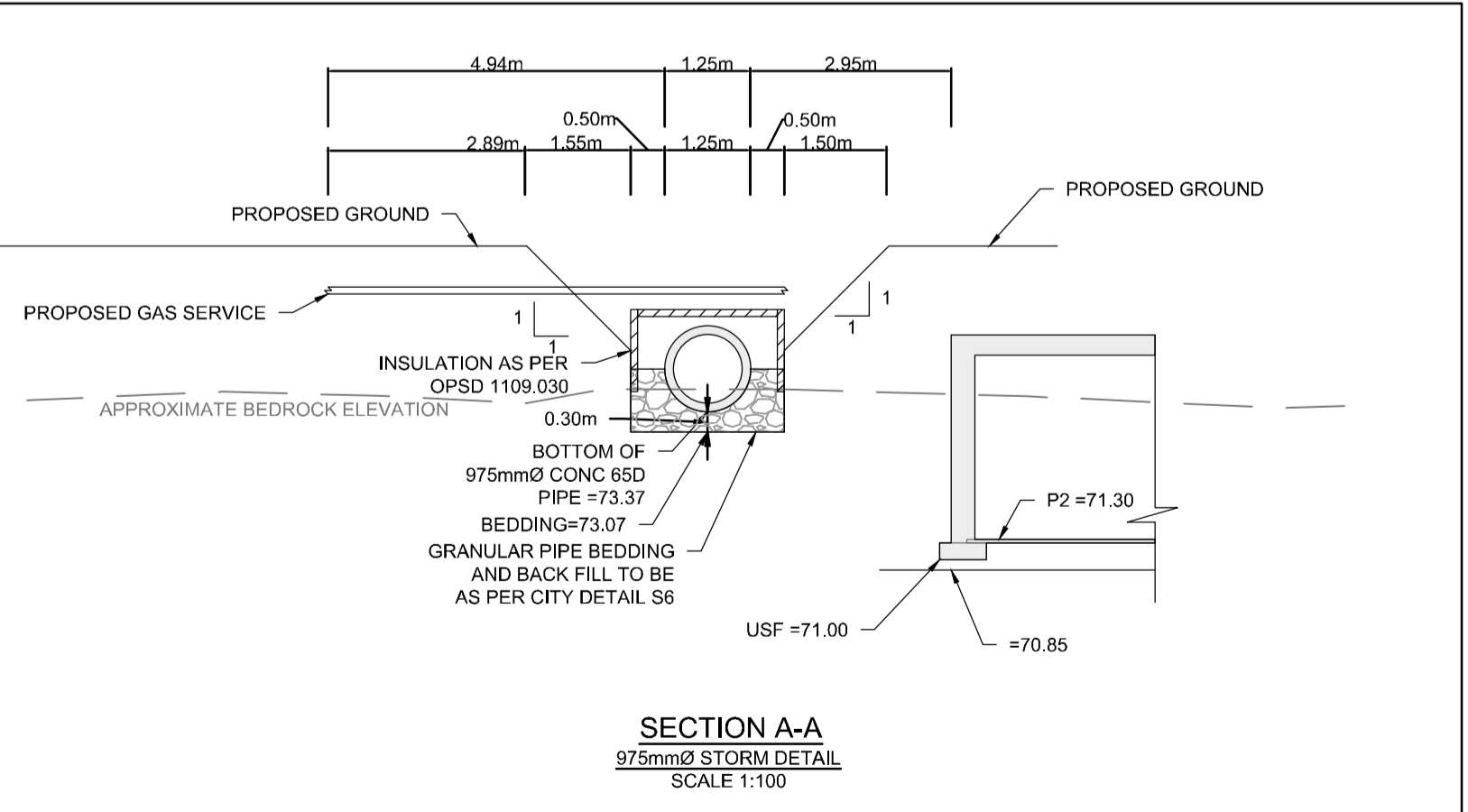
CB No.	T/G ELEVATION	INVERT
CB 01	75.55	NE=74.35

STATION	SURFACE ELEVATION	TOP OF WM ELEVATION*	DESCRIPTION
1+000.00	75.62	73.12	CONNECT TO EXISTING 400mmØ WATERMAIN
1+005.51	75.63	73.23	11.25° HORIZONTAL BEND
1+016.07	76.20	73.80	22.5° HORIZONTAL BEND
1+018.07	76.25	73.85	DISTRICT AREA WATERMETER CHAMBER PER CITY OF OTTAWA DETAIL W3
1+032.50	76.62	73.82	CROSS BELOW 300mmØ STORM SEWER, AS PER CITY DETAIL W25. (CLEARANCE=0.5m)
1+059.74	76.95	74.55	TEE CONNECTION TO HYDRANT LEAD
1+076.85	76.75	74.20	TEE CONNECTION TO HYDRANT LEAD
1+077.90	76.57	74.17	22.5° HORIZONTAL BEND
1+092.30	76.18	73.78	22.5° HORIZONTAL BEND
1+097.22	75.59	73.19	VALVE AND VALVE BOX
1+105.79	75.69	72.76	CROSSING BELOW 975mmØ STORM SEWER, AS PER CITY DETAIL W25.(CLEARANCE=0.5m)
1+107.73	75.59	72.83	CROSSING BELOW 200mm STORM SEWER
1+108.43	75.61	72.86	WATERMAIN CAP 1m FROM BUILDING

STATION	SURFACE ELEVATION	TOP OF WM ELEVATION*	DESCRIPTION
2+000.00	76.60	74.20	CONNECT TO EXISTING 150mmØ WATERMAIN C/W 200X150mm REDUCER
2+001.95	76.58	74.18	22.5° HORIZONTAL BEND
2+015.11	76.29	73.89	22.5° HORIZONTAL BEND
2+030.11	75.66	72.76	CROSSING BELOW 975mmØ STORM SEWER, AS PER CITY DETAIL W25. (CLEARANCE=0.5m)
2+032.04	75.56	72.83	CROSS BELOW 200mmØ STORM SEWER
2+032.75	75.57	72.86	WATERMAIN CAP 1m FROM BUILDING

STATION	SURFACE ELEVATION	TOP OF WM ELEVATION	DESCRIPTION
0+000.00	76.75	74.20	TEE CONNECTION TO HYDRANT LEAD
0+002.28	76.77	74.37	VALVE AND VALVE BOX
0+004.55	76.85	74.45	HYDRANT

CROSSING	STATION	SURFACE ELEVATION	INVERT OF STORM SEWER	TOP OF WM ELEVATION	CLEARANCE
⊙	1+032.50	76.62	74.32	73.82	0.50
⊙	1+105.79	75.69	73.26*	72.76	0.50
⊙	2+030.11	75.66	73.26*	72.76	0.50
⊙	1+107.73	75.59	74.33	72.83	1.50
⊙	2+030.11	75.66	74.34	72.83	1.51



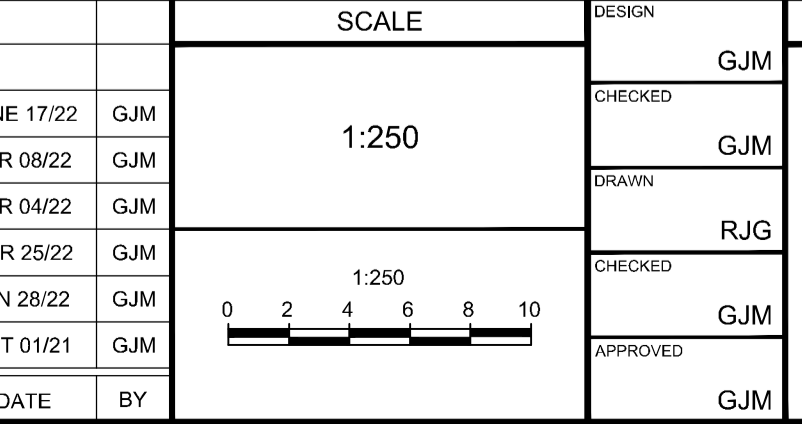
\* EXACT ELEVATION OF EXISTING WATERMAIN TO BE DETERMINED IN THE FIELD. PROVIDE THERMAL INSULATION ON SHALLOW WATERMAIN AS PER THE CITY OF OTTAWA DETAIL W22 WHERE COVER IS LESS THAN 2.4m

REFER TO 120202-ND FOR ADDITIONAL NOTES AND DETAILS

**NOTE:** THE POSITION OF ALL POLE LINES, CONDUITS, WATERMANS, SEWERS AND OTHER UNDERGROUND AND OVERGROUND UTILITIES AND STRUCTURES IS NOT NECESSARILY SHOWN ON THE CONTRACT DRAWINGS, AND WHERE SHOWN, THE ACCURACY OF THE POSITION OF SUCH UTILITIES AND STRUCTURES IS NOT GUARANTEED. BEFORE STARTING WORK, DETERMINE THE EXACT LOCATION OF ALL SUCH UTILITIES AND STRUCTURES AND ASSUME ALL LIABILITY FOR DAMAGE TO THEM.

**Owner:**  
 Wesley Clover International  
 c/o Richard Goldstein  
 KRP Properties  
 300-555 Leggett Drive, Tower B,  
 Kanata, ON K2K 2K3

No.	REVISION	DATE	BY
6.	REVISED PER CITY COMMENTS	JUNE 17/22	GJM
5.	GARAGE PERMIT	APR 08/22	GJM
4.	REVISED PER CITY COMMENTS	APR 04/22	GJM
3.	ISSUED FOR GARAGE COORDINATION	MAR 25/22	GJM
2.	REVISED PER CITY COMMENTS	JAN 28/22	GJM
1.	ISSUED WITH ZONING AND SITE PLAN APPLICATION	OCT 01/21	GJM



DESIGN: GJM  
 CHECKED: GJM  
 DRAWN: RJG  
 CHECKED: GJM  
 APPROVED: GJM

**A. R. MESTWARP**  
 100201604  
 JUNE 17/2022  
 PROVINCE OF ONTARIO

**G.J. MacDONALD**  
 JUNE 17, 2022  
 PROVINCE OF ONTARIO

**NOVATECH**  
 Engineers, Planners & Landscape Architects  
 Suite 200, 240 Michael Cowpland Drive  
 Ottawa, Ontario, Canada K2M 1P6  
 Telephone: (613) 254-9643  
 Facsimile: (613) 254-5867  
 Website: www.novatech-eng.com

LOCATION: CITY OF OTTAWA, BROOKSTREET APARTMENTS  
 DRAWING NAME: GENERAL PLAN OF SERVICES (WEST)  
 PROJECT No.: 120202-00  
 REV: 6  
 DRAWING No.: 120202-GP1  
 PLAN # 18607

M:\2020\120202\CADD\Drawings\120202-GP1.dwg, GP1, Jun 15, 2022, 1:14pm, amestwarp

D07-12-21-0160