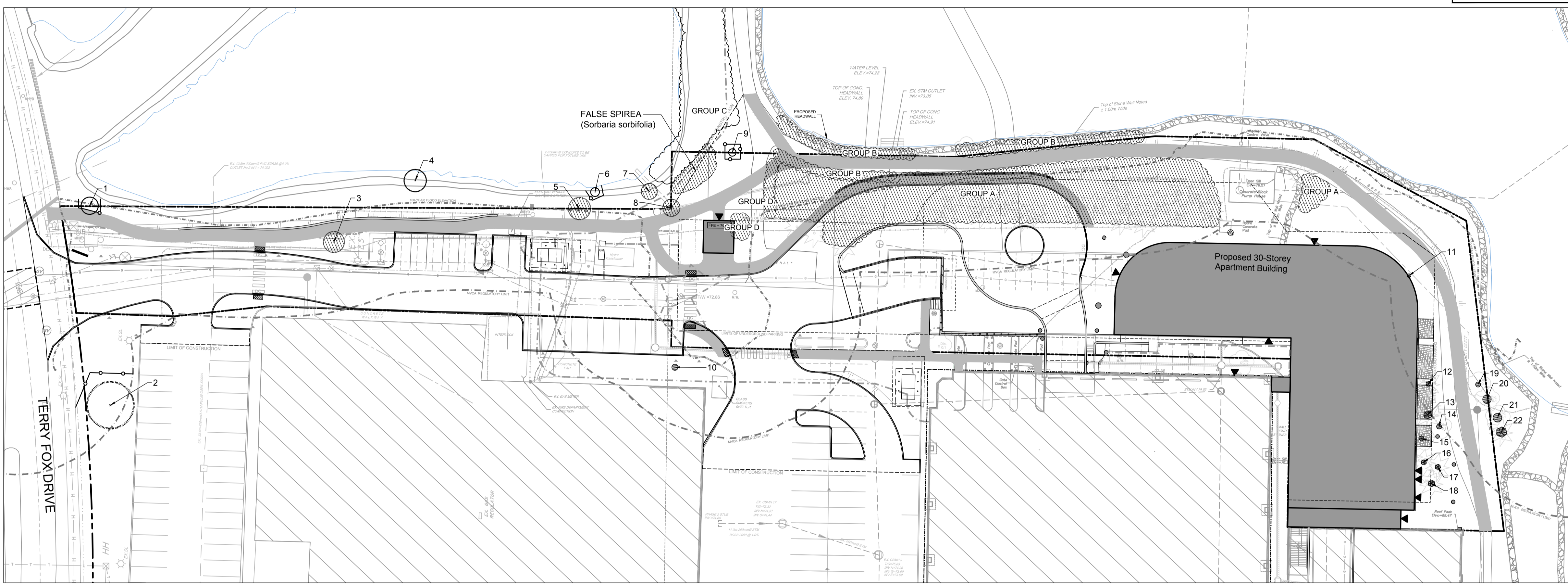
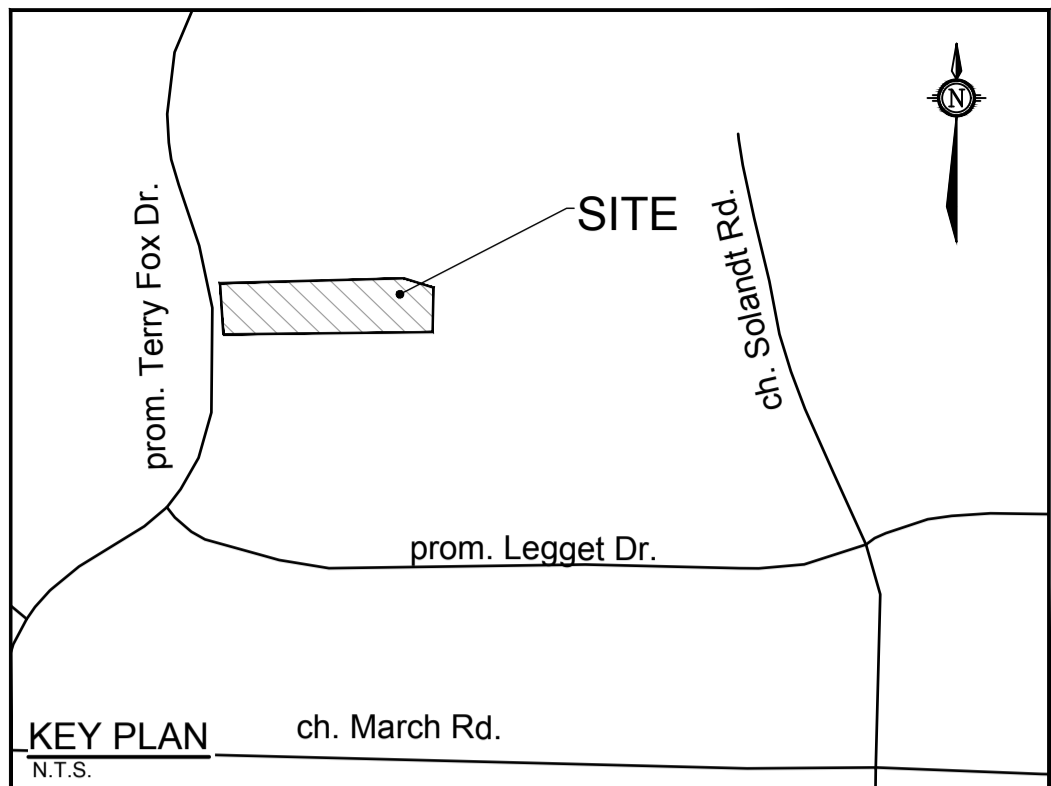
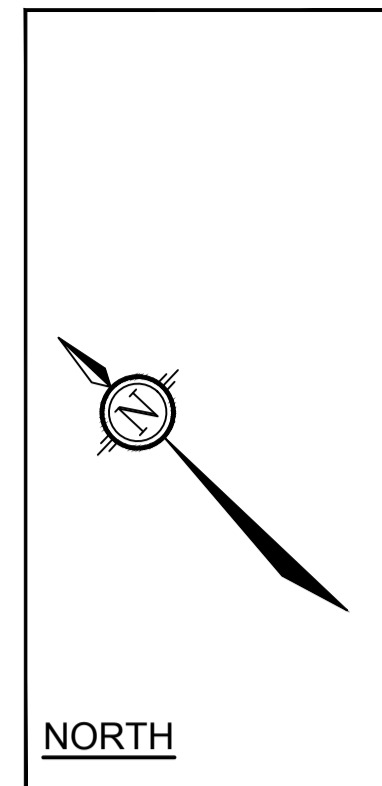


AtHamlin
ALLISON HAMLIN
MANAGER (A), DEVELOPMENT REVIEW WEST
PLANNING, REAL ESTATE & ECONOMIC DEVELOPMENT
DEPARTMENT, CITY OF OTTAWA

APPROVED
 By Allison Hamlin at 10:51 pm, Oct 12, 2022



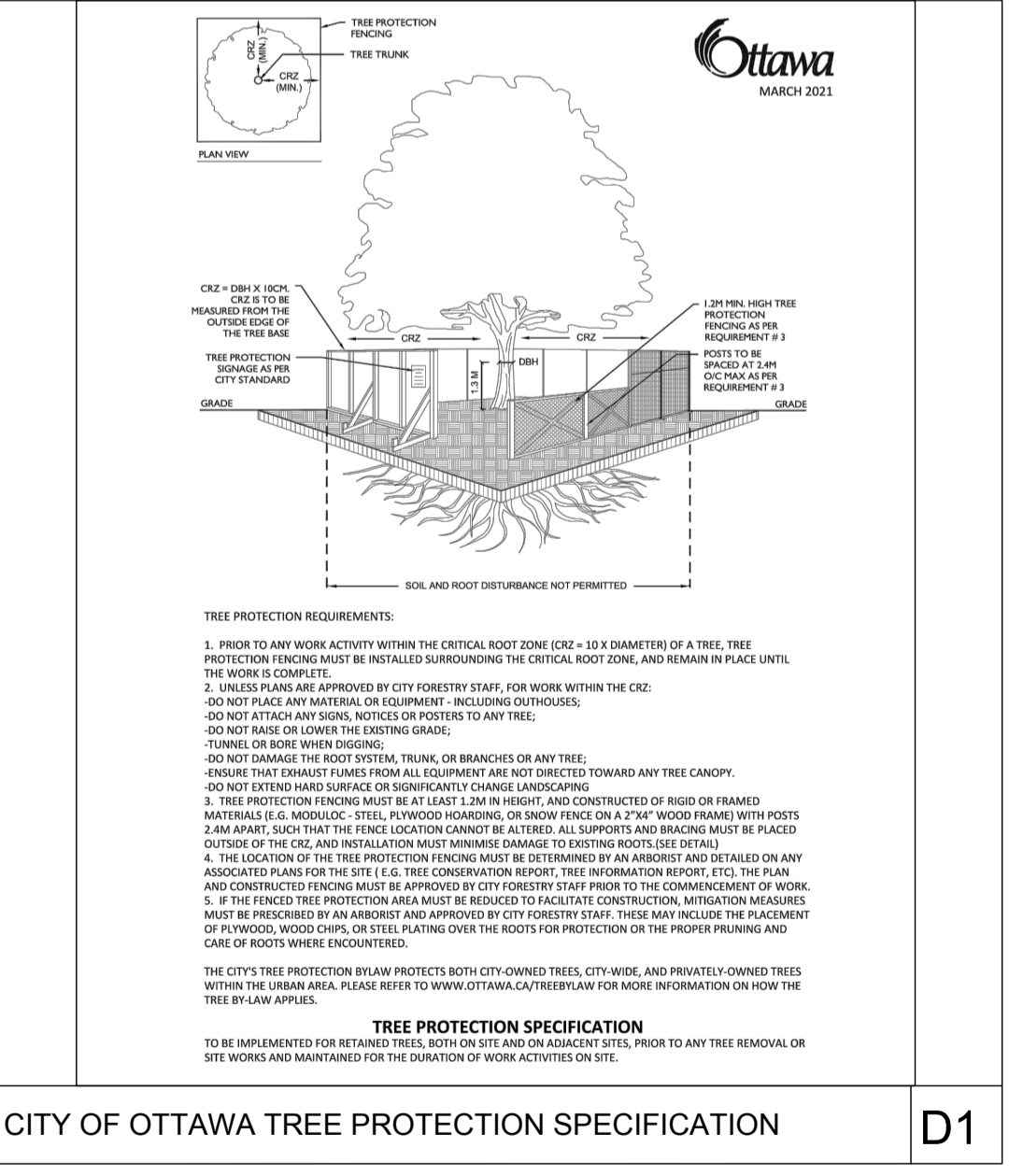
LEGEND

- EXISTING TREE TO REMAIN, SYMBOL SIZE REFLECTS CRZ
- EXISTING TREE TO REMOVE, SYMBOL SIZE REFLECTS CRZ
- EXISTING TREE GROUP TO BE REMOVED
- TREE PROTECTION FENCE

TREE PROTECTION

Implement the following protection measures for retained trees, both on site and on adjacent sites, prior to any work activity, including tree removal. Maintain tree protection fence in place and in good condition for the duration of site works:

1. The Landscape Architect or Certified Arborist is to determine the location of the tree protection fencing and detail it on any associated plans for the site (e.g. tree conservation report, tree disclosure report, etc.)
2. Under the guidance of a Landscape Architect or Certified Arborist, erect a fence at the critical root zone (CRZ) of trees. Diameter at breast height (DBH) is the trunk diameter measured at 1.3m height on the tree trunk. The CRZ is calculated as DBH x 10. Refer to the Tree Protection Fence detail.
3. Refer to the Tree Protection Plan for fence location. City Forestry Staff are to approve both the plan and the installed fence prior to work commencement.
4. Do not place any material or equipment within 2m of the CRZ of any tree, including outhouses.
5. Do not attach any signs, notices, or posters to any tree.
6. Do not disturb, raise, or lower the existing grade within the CRZ without approval.
7. Only tunnel or bore when digging within the CRZ of a tree. Hand work only where required within the CRZ; absolutely no machinery permitted.
8. Do not damage the root system, trunk, or branches, or any tree.
9. Do not extend hard surface or significantly change landscaping away from any tree canopy.
10. Ensure that exhaust fumes from all equipment are directed away from any tree canopy.
11. When trees marked for removal overlap with the CRZ of trees marked for preservation: cut roots at the edge of the CRZ and grind down stumps after tree removals, do not pull out stumps. Ensure there is no root pulling or disturbance of the ground within the CRZ.
12. Prior to work taking place, notify and consult the Landscape Architect and City Forestry Staff if roots must be cut. Roots 20mm or larger should be cut at right angles with clean, sharp horticultural tools without tearing, crushing, or pulling. Refer to City of Ottawa Specification S.P. F-8011 Tree Protection, Excavation of Root Zone.
13. If damaged or objectionable branches are observed, consult the Landscape Architect, before any work is conducted. Do not prune leaders. Do not prune more than 1/4 of crown.
14. Set up a water and fertilizing program, if trees are being affected by site works, to the satisfaction of the Landscape Architect.
15. The Landscape Architect is to prescribe mitigation measures if the protected fenced area must be reduced to facilitate construction. Measures may include the placement of plywood, wood chips, or steel plating over the roots for protection. City Forestry Staff are to approve said measures prior to fence movement.
16. City of Ottawa By-law: Protects municipal trees and municipal natural areas in the City of Ottawa and trees on private property in the urban area of the City of Ottawa (2020-340).



EXISTING TREE GROUP INVENTORY:

Key	Botanical Name	Common Name	% Compos.	DBH Min-Max	Remarks	Recomm.
Group A						
A	Larix laricina	Tamarack	40%	15-20cm		Conflict
A	Picea glauca	White Spruce	20%	5-25cm		Conflict
A	Picea pungens var. glauca	Colorado Spruce	20%	15-25cm		Conflict
A	Pinus nigra	Austrian Pine	20%	5-15cm		Conflict
Group B						
B	Fraxinus americanus	White Ash	85%	5-15cm		Conflict
B	Malus sp.	Crabapple	5%	10cm		Conflict
B	Salix sp.	Willow	10%	8cm		Conflict
Group C						
C	Fraxinus americanus	White Ash	30%	5-25cm	Mostly dead standing	PROTECT
C	Acer negundo	Manitoba Maple	40%	5-25cm		PROTECT
C	Malus sp.	Crabapple	10%	15-20cm		PROTECT
C	Rhamnus cathartica	European Buckthorn	20%	3-8cm	Invasive	Remove
Group D						
D	Syringa vulgaris	Common Lilac	100%	5cm		Conflict

EXISTING SINGLE TREE INVENTORY:

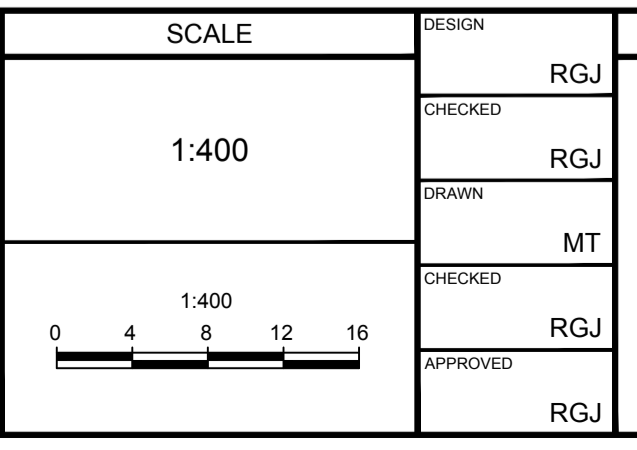
No.	Botanical Name	Common Name	DBH (cm)	CRZ (m)	Condition	Remarks	Recomm.
1	Acer x freemanii	Freeman Maple	14	1.40	G	Lean	PROTECT
2	Quercus rubra	Red Oak	38	3.80	G	Spiral seam	PROTECT
3	Amelanchier sp.	Serviceberry	17	1.70	P	Dieback	Remove
4	Acer ginnala	Amur Maple	18	1.80	G		PROTECT
5	Amelanchier sp.	Serviceberry	18	1.80	P	Severe dieback / Internal rot	Remove
6	Acer ginnala	Amur Maple	7	0.70	G		PROTECT
7	Amelanchier sp.	Serviceberry	13	1.30	P	Severe dieback / Internal rot	Remove
8	Amelanchier sp.	Serviceberry	14	1.40	P	Severe dieback / Internal rot	Remove
9	Acer rubrum	Red Maple	6	0.60	G		PROTECT
10	Gleditsia triacanthos var. inermis	Thornless Honey Locust	5	0.50	G		Conflict
11	Acer x freemanii	Freeman Maple	3	0.30	G		Conflict
12	Picea glauca	White Spruce	4	0.40	F	Low vigour / Double leader	Conflict
13	Pinus strobus	White Pine	6	0.60	G		Conflict
14	Amelanchier sp.	Serviceberry	4	0.40	P	Severe dieback	Conflict
15	Acer x freemanii	Freeman Maple	4	0.40	G	Mechanical damage at base (String trimmer)	Conflict
16	Pinus strobus	White Pine	4	0.40	G		Conflict
17	Picea glauca	White Spruce	4	0.40	F	Thin canopy / Low vigour	Conflict
18	Picea glauca	White Spruce	5	0.50	G		Conflict
19	Quercus rubra	Red Oak	4	0.40	G		Conflict
20	Quercus rubra	Red Oak	7	0.70	F	Large wound at base / Thin canopy	Conflict
21	Acer rubrum	Red Maple	7	0.70	G	Small wounds healing over	Conflict
22	Picea glauca	White Spruce	8	0.80	G		Conflict

NOTE: THE POSITION OF ALL POLE LINES, CONDUITS, WATERMANS, SEWERS AND OTHER UNDERGROUND AND OVERGROUND UTILITIES AND STRUCTURES IS NOT NECESSARILY SHOWN ON THE CONTRACT DRAWINGS, AND WHERE SHOWN, THE ACCURACY OF THE POSITION OF SUCH UTILITIES AND STRUCTURES IS NOT GUARANTEED, BEFORE STARTING WORK, DETERMINE THE EXACT LOCATION OF ALL SUCH UTILITIES AND STRUCTURES AND ASSUME ALL LIABILITY FOR DAMAGE TO THEM.

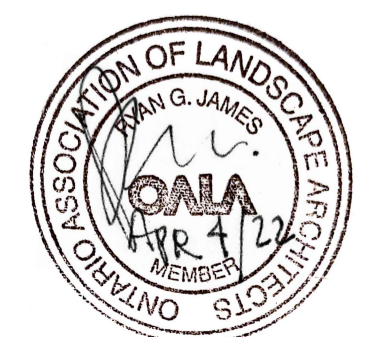
Owner:
 Wesley Clover International
 c/o Richard Colquhoun
 KRP Properties
 300-555 Legget Drive, Tower B,
 Kanata, ON K2W 2K3
 Phone: (613)591-0594

NOT FOR CONSTRUCTION

No.	REVISION	DATE	BY
1.	ISSUED FOR SITE PLAN APPROVAL	OCT 1/21	RGJ



DESIGN	RGJ
CHECKED	RGJ
DRAWN	MT
CHECKED	RGJ
APPROVED	RGJ



NOVATECH
 Engineers, Planners & Landscape Architects
 Suite 200, 240 Michael Cowpland Drive
 Ottawa, Ontario, Canada K2M 1P6
 Telephone (613) 254-9643
 Facsimile (613) 254-5867
 Website www.novatech-eng.com

LOCATION CITY OF OTTAWA BROOKSTREET APARTMENTS	PROJECT No. 120202-00
DRAWING NAME TREE CONSERVATION REPORT	REV # 1
	DRAWING No. 120202-L3

D07-12-21-0160 #18607