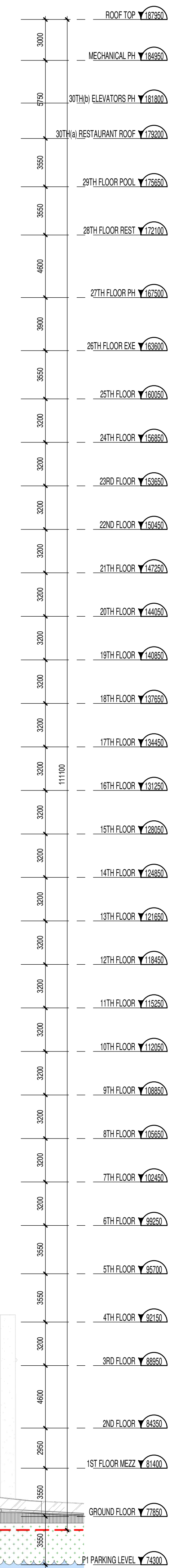
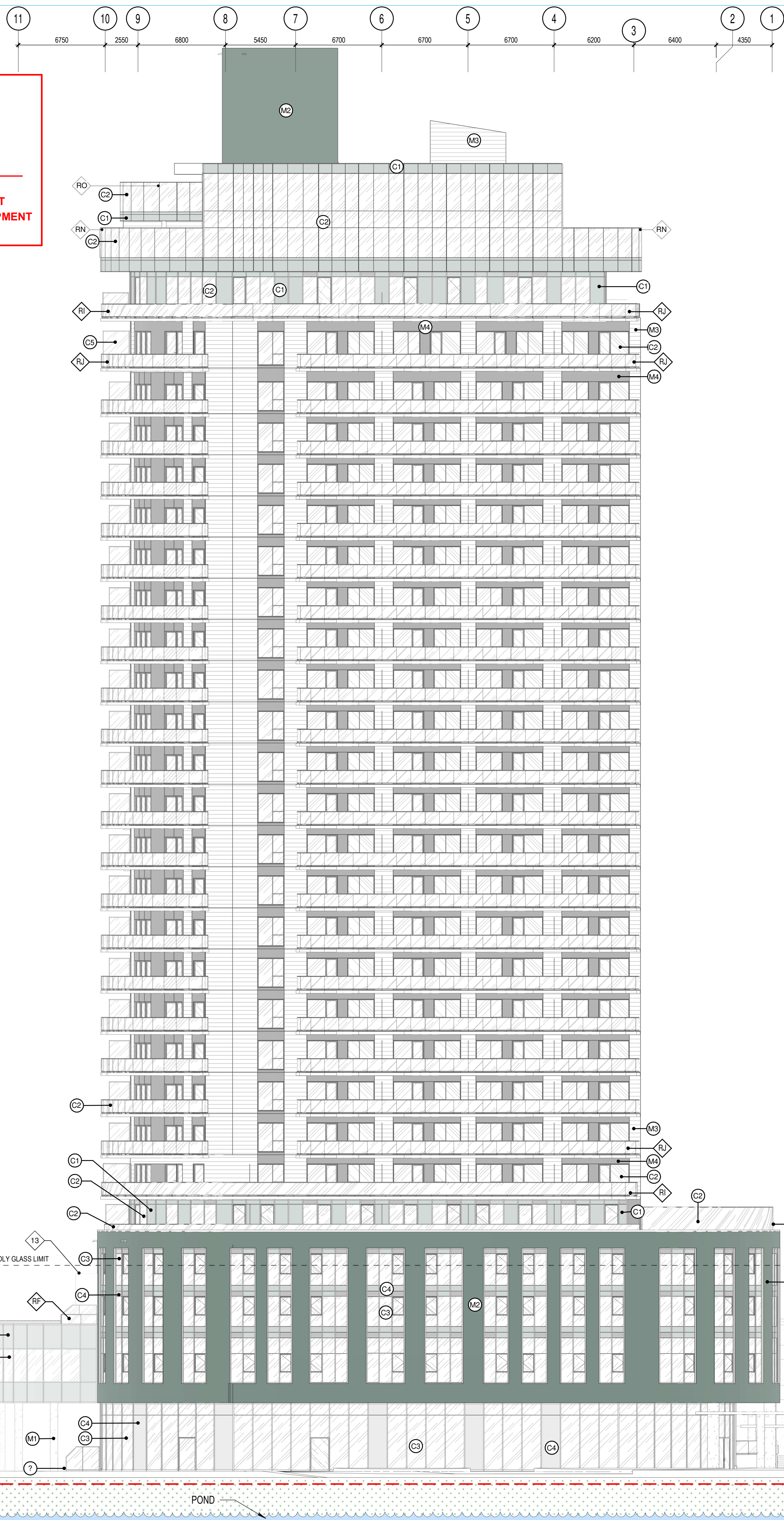


Allison Hamlin

ALLISON HAMLIN
MANAGER (A), DEVELOPMENT REVIEW WEST
PLANNING, REAL ESTATE & ECONOMIC DEVELOPMENT
DEPARTMENT, CITY OF OTTAWA

APPROVED
 By Allison Hamlin at 10:50 pm, Oct 12, 2022



GENERAL NOTES	
# NOTE	DESCRIPTION
1	PROPERTY LINE
2	LEVELS 2 TO 4 FOOTPRINT
3	TOWER FOOTPRINT
4	HOSE BIB FOR LANDSCAPE
5	GROUND FLOOR FOOTPRINT
6	PARKING P2 FOOTPRINT
7	PUBLIC TERRACE
8	28TH FLOOR FOOTPRINT
9	30TH FLOOR ROOF PROFILE
10	GROUND FLOOR DROP OFF ON P1 ROOF (HEATED)
11	EXISTING PARALLEL PARKING ROW
12	WINDOWS ADDED TO MEET 2% OPENING FOR SMOKE CONTROL REQUIREMENT
13	EXISTING BALLROOM
14	MULTI LEVEL EXISTING PARKING GARAGE
15	EXISTING PARKING GARAGE NEW ENTRANCE
16	NEW BALLROOM STAIRS EXIT
17	FIRE ROUTE (ONE WAY AT DROP OFF)
18	MONMOUTH EXISTING BUILDING
19	EXISTING WALL HYDRANT
20	CANOPY PROFILE
21	ELECTRICAL CLOSET, SEE ELECTRICAL ENG.
22	AEDICULE, STAIRS #3 AN EXHAUST AIR FROM P2
23	BALLROOM EXTENSION FOOTPRINT
24	TRENCH DRAIN
25	PATHWAY CW CIRCULATION MEMBRANE
26	COOLING TOWER ON ROOF OF THE 29TH FLOOR, SEE MECHANICAL ENG.
27	SCREEN WALL
28	BIRD-FRIENDLY LOW REFLECTANCE GLASS
29	PRIVATE TERRACE
30	GARBAGE CHUTE
31	ROOF ACCESS
32	SIAMASE
33	SCUPPER WITH SIMPLE DRAIN
34	GENERATOR ON THE ROOF, SEE ELECTRICAL ENG.
35	EXISTING TRANSFORMER TO BE RELOCATED (MONMOUTH BUILDING)
36	RESIDENCE TRANSFORMER, SEE ELECTRICAL ENG.
37	GARBAGE COMPACTOR
38	EXISTING HOTEL
39	EXTERIOR SHOWER
40	EXTERIOR BIKE RACKS
41	SNOW STORAGE
42	PARKING P1 FOOTPRINT
43	PAD FOR NEW PUMPHOUSE ELECTRICAL SUPPLY
44	ELECTRIC BASE TO BE RELOCATED
45	PUMP HOUSE TO BE RELOCATED
46	PROJECT SIGNAGE
47	GUARDRAIL
48	TWSI (SEE CIVIL GRADING PLAN)
49	GARBAGE CHUTE
50	GARBAGE CHUTE
51	29TH FLOOR ROOF

GENERAL NOTES

1. Ces documents d'architecture sont la propriété exclusive de NEUF architecte(s) et ne peuvent être utilisés, reproduits ou copiés sans autorisation écrite préalable. / These architectural documents are the exclusive property of NEUF architecte(s) and cannot be used, copied or reproduced without written pre-authorization.

2. Les dimensions apparaissant aux documents doivent être vérifiées par l'entrepreneur avant le début des travaux. / All dimensions which appear on the documents must be verified by the contractor before to start the work.

3. Veuillez aviser l'architecte de toute dimension erronée et/ou divergences entre ces documents et ceux des autres professionnels. / The architect must be notified of all errors, omissions and discrepancies between these documents and those of the others professionals.

4. Les dimensions sur ces documents doivent être lues et non mesurées. / The dimensions on these documents must be read and not measured.

MECHANICAL: Mécanique
 ELECTRICAL: Électrique

GOODKEY, WEEDMARK & ASSOCIATES LIMITED
 1888 Woodbine Dr., Orono, ON N3C 3R6
 T 613 727 5111 gweal.com

STRUCTURAL: Structure

CUNLIFFE & ASSOCIATES
 200-1590 Carling Ave., Ottawa, ON K1Z 8S8
 www.cuncliffe.ca

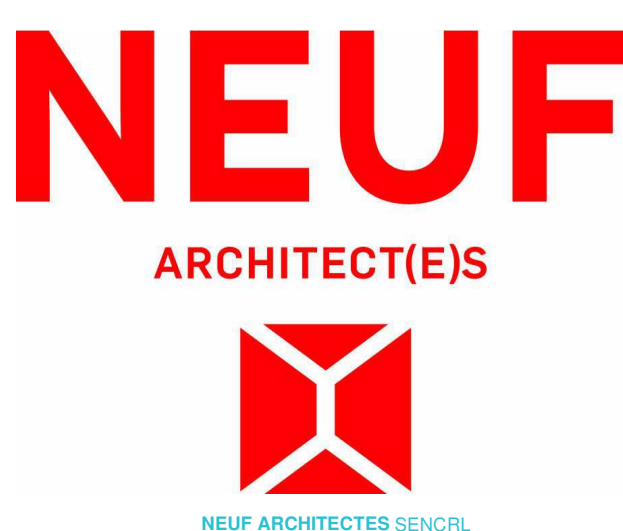
URBANISTE ET CIVIL Urban planner and Civil
 ARCHITECTE DE PAYSAGE Landscape Architect

NOVATECH
 240 Michael Cowland Drive, Suite 200, Ottawa, ON, K2M 1P6
 T 613 254 9643 novatech-eng.com

ARCHITECTE Architect
 DESIGN INTERIEUR Interior Design

NEUF architect(e)s SENCRL
 630, boul. René-Lévesque O., 52e étage, Montréal QC H3B 1S6
 T 514 847 1117 NEUFarchitectes.com

SCEAU / Seal



OUVRAGE Project

BROOKSTREET APARTMENTS

EMPLACEMENT Location NO PROJET No.
 525 Legget Drive Kanata 12347
 Ontario K2K 2W2

NO	REVISION	DATE (aa-mm-ij)
A	FOR INTERNAL REVIEW - ARCHITECT	2021 07 14
B	SITE PLAN APPROVAL	2021 10 04
C	FOR COORDINATION	2021 10 27
D	FOR INTERNAL REVIEW - ARCHITECT	2021 11 23
E	SITE PLAN APPROVAL REV 1	2022 01 28

Preliminary
DO NOT USE FOR CONSTRUCTION

DESSINÉ PAR Drawn by
 AT DM

VERIFIÉ PAR Checked
 KP BSJ

DATE (aa.mm.ij)
 2022 01 28

ÉCHELLE Scale
 1:200

TITRE DU DESSIN Drawing Title

NORTH-EAST ELEVATION POND

REVISION Revision NO. DESSIN Dwg Number
E **A401**
 #18607

BIM 360/12347_BROOKSTREET/BRKST_12347_ARC_INT_R20.rvt

POND ORIENTATION
 1:200