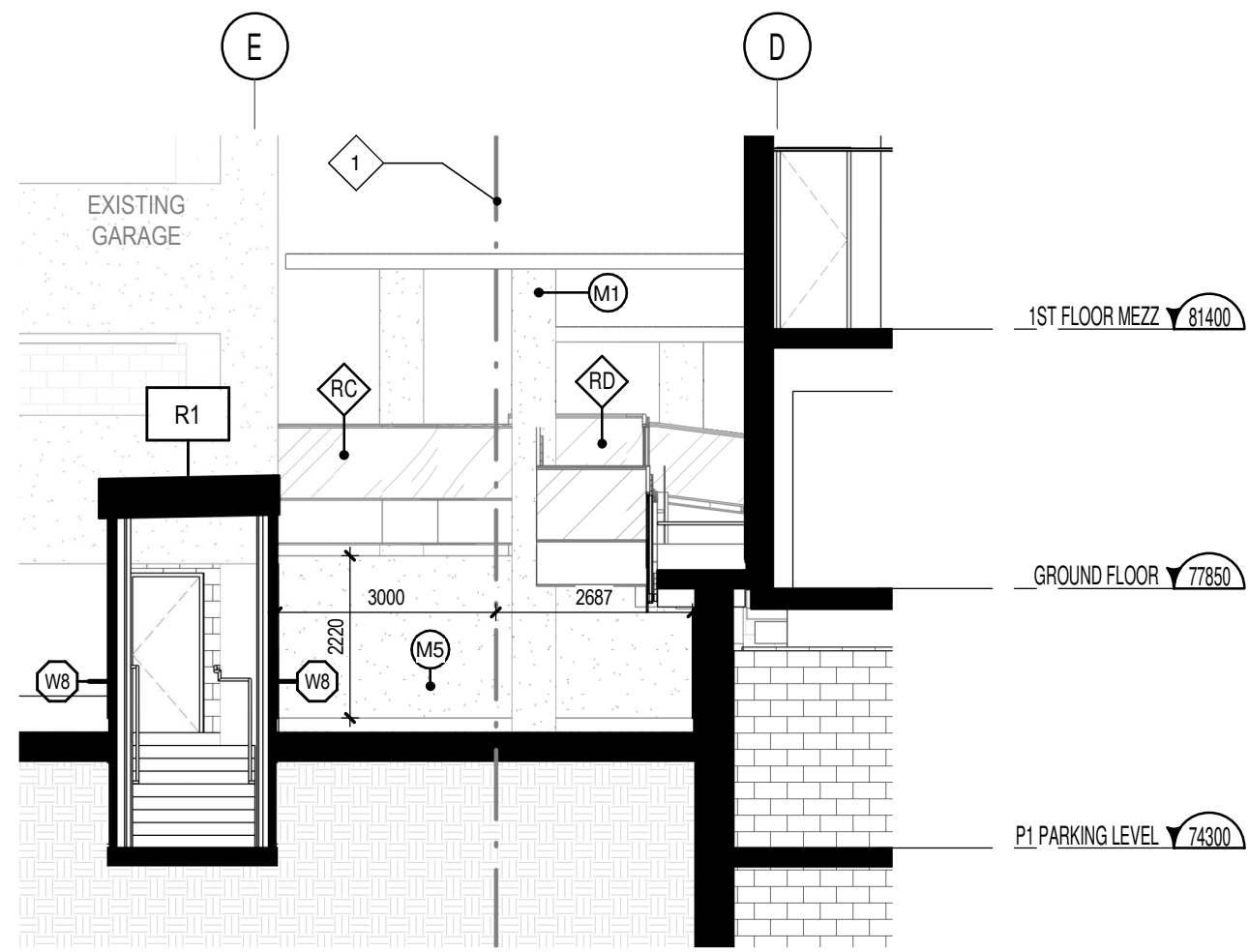


SE ELEVATION - STAIR 2 AEDICULE
1:100
A403



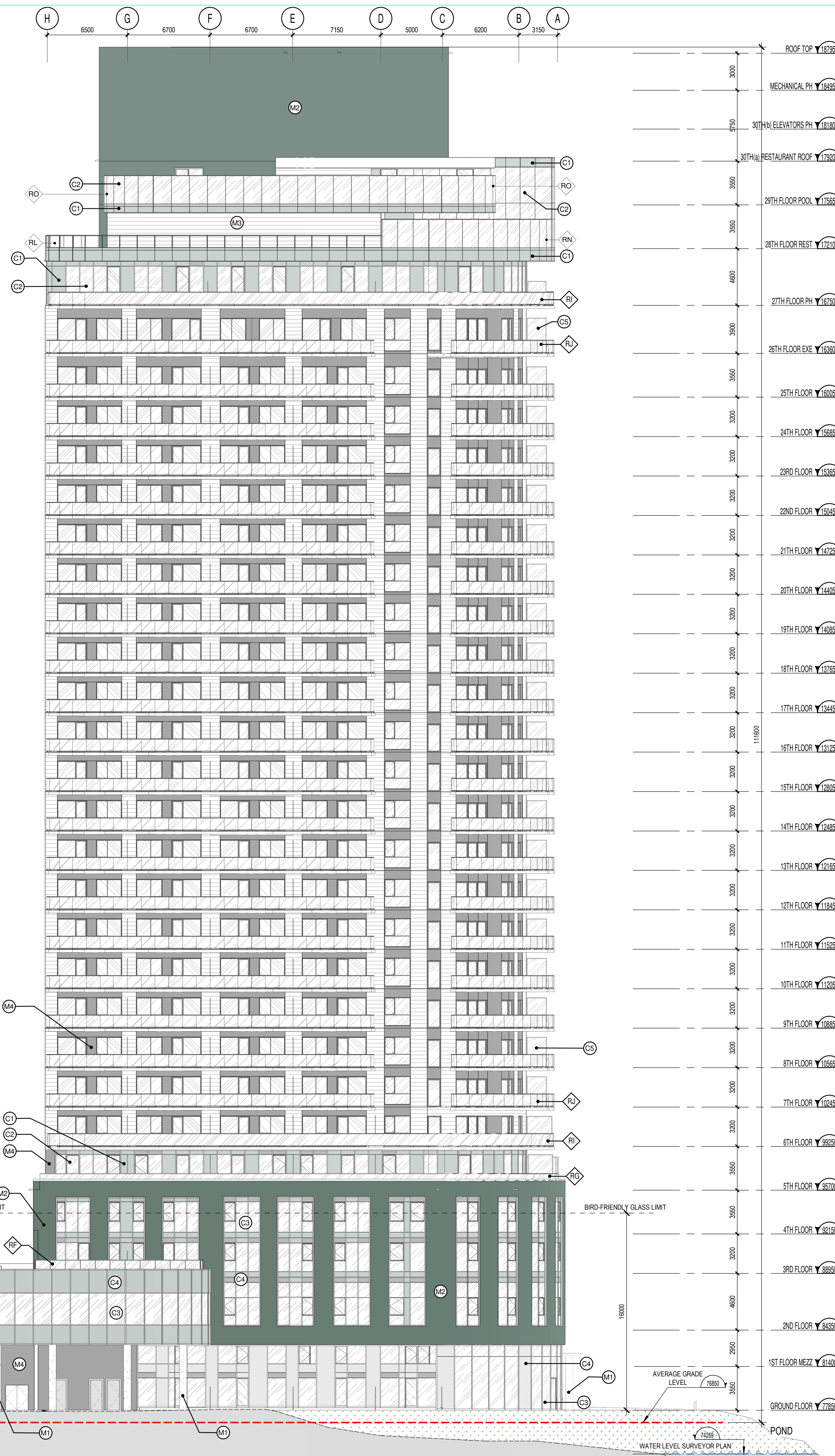
SE ELEVATION - VESTIBULE TO GARAGE
1:100
A403

Allison Hamlin

ALLISON HAMLIN
MANAGER (A), DEVELOPMENT REVIEW WEST
PLANNING, REAL ESTATE & ECONOMIC DEVELOPMENT
DEPARTMENT, CITY OF OTTAWA

APPROVED
By Allison Hamlin at 10:50 pm, Oct 12, 2022

GOLF ORIENTATION
1:200
A403



GENERAL NOTES	
# NOTE	DESCRIPTION
1	PROPERTY LINE
2	LEVELS 2 TO 4 FOOTPRINT
3	TOWER FOOTPRINT
4	HOSE BIB FOR LANDSCAPE
5	GROUND FLOOR FOOTPRINT
6	PARKING P2 FOOTPRINT
7	PUBLIC TERRACE
8	28TH FLOOR FOOTPRINT
9	30TH FLOOR ROOF PROFILE
10	GROUND FLOOR DROP OFF ON P1 ROOF (HEATED)
11	EXISTING PARALLEL PARKING ROW
12	WINDOWS ADDED TO MEET 2% OPENING FOR SMOKE CONTROL REQUIREMENT
13	EXISTING BALLROOM
14	MULTI LEVEL EXISTING PARKING GARAGE
15	EXISTING PARKING GARAGE NEW ENTRANCE
16	NEW BALLROOM STAIRS EXIT
17	FIRE ROUTE (ONE WAY AT DROP OFF)
18	MOMMOUTH EXISTING BUILDING
19	EXISTING WALL HYDRANT
20	CANOPY PROFILE
22	ELECTRICAL CLOSET, SEE ELECTRICAL ENG.
23	AEDICULE STAIRS #3 AN EXHAUST AIR FROM P2
24	BALLROOM EXTENSION FOOTPRINT
25	TRENCH DRAIN
26	PATHWAY CW CIRCULATION MEMBRANE
27	COOLING TOWER ON ROOF OF THE 28TH FLOOR, SEE MECHANICAL ENG.
28	SCREEN WALL
29	BIRD-FRIENDLY LOW REFLECTANCE GLASS
30	PRIVATE TERRACE
31	GARBAGE CHUTE
32	ROOF ACCESS
33	SWIMMING POOL
34	SCUPPER WITH SIMPLE DRAIN
35	GENERATOR ON THE ROOF, SEE ELECTRICAL ENG.
36	EXISTING TRANSFORMER TO BE RELOCATED (MONMOUTH BUILDING)
37	RESIDENCE TRANSFORMER, SEE ELECTRICAL ENG.
38	GARBAGE COMPACTOR
39	EXISTING HOTEL
40	EXTERIOR SHOWER
41	EXTERIOR BIKE RACKS
42	SNOW STORAGE
43	PARKING P1 FOOTPRINT
44	PAD FOR NEW PUMPHOUSE ELECTRICAL SUPPLY
45	ELECTRIC BASE TO BE RELOCATED
46	PUMP HOUSE TO BE RELOCATED
47	PROJECT SIGNAGE
48	GUARDRAIL
49	TWSI (SEE CIVIL GRADING PLAN)
50	GARBAGE CHUTE
51	29TH FLOOR ROOF

EXTERIOR FINISHES LEGEND	
NOTE	DESCRIPTION
M1	CONCRETE PRECAST COLUMN - POLISHED CONCRETE FINISH
M2	PRECAST - COLOUR - GREEN/ GREY AS PER EXISTING BUILDING
M3	HORIZONTAL METAL CLADDING - LIGHT GREY
M4	METAL CLADDING - DARK GREY
M5	EIFS CONCRETE FOUNDATION FINISH - ADEX FINISH COAT - COLOUR - GREEN/ GREY
C1	SPANDREL PANEL - LIGHT GREY
C2	CLEAR GLASS
C3	BIRD SAFE CLEAR GLASS
C4	BIRD SAFE SPANDREL PANEL
C5	TRANSLUCENT GLASS FOR PRIVACY SCREEN

NOTES GÉNÉRALES General Notes

- Ces documents d'architecture sont la propriété exclusive de NEUF architectes et ne peuvent être utilisés, reproduits ou copiés sans autorisation écrite préalable. / These architectural documents are the exclusive property of NEUF architectes and cannot be used, copied or reproduced without written pre-authorization.
- Les dimensions apparaissant aux documents doivent être vérifiées par l'entrepreneur avant le début des travaux. / All dimensions which appear on the documents must be verified by the contractor before to start the work.
- Veuillez aviser l'architecte de toute dimension erreur et/ou divergence entre ces documents et ceux des autres professionnels. / The architect must be notified of all errors, omissions and discrepancies between these documents and those of the other professionals.
- Les dimensions sur ces documents doivent être lues et non mesurées. / The dimensions on these documents must be read and not measured.

MECHANICAL: Mécanique
ELECTRICAL: Électrique

GOODKEY, WEEDMARK & ASSOCIATES LIMITED
1888 Woodbine Dr., Downs, ON M3C 3H6
T 613 727 5111 gweal.com

STRUCTURAL: Structure

CUNLIFFE & ASSOCIATES
200-1550 Carling Ave., Ottawa, ON K1Z 8S8
www.cuncliffe.ca

URBANISTE ET CIVIL: Urban planner and Civil
ARCHITECTE DE PAYSAGE: Landscape Architect

NOVATECH
240 Michael Cowplant Drive, Suite 200, Ottawa, ON, K2M 1P6
T 613 254 9643 novatech-eng.com

ARCHITECTE: Architect
DESIGN INTERIEUR: Interior Design

NEUF architect(e)s SENCRL
630, St-Jacques, Montréal, QC H3B 1S6
T 514 847 1117 NEUFarchitectes.com

SCEAU / Seal



CLIENT: Client

brookstreet APARTMENTS

OUVRAGE: Project

BROOKSTREET APARTMENTS

EMPLACEMENT: Location NO PROJET: No.
525 Legget Drive Kanata 12347
Ontario K2K 2W2

NO	RÉVISION	DATE (aa-mm-ii)
A	FOR INTERNAL REVIEW - ARCHITECT	2021 07 14
B	SITE PLAN APPROVAL	2021 10 04
C	FOR COORDINATION	2021 10 27
D	FOR INTERNAL REVIEW - ARCHITECT	2021 11 23
E	SITE PLAN APPROVAL REV 1	2022 01 28

DESSINÉ PAR: Drawn by
AT DM

DATE (aa.mm.ii):
2022 01 28

TITRE DU DESSIN: Drawing Title

VERIFIÉ PAR: Checked
KP BJS

ÉCHELLE: Scale
1:200

SOUTH-EAST ELEVATION GOLF

RÉVISION: Revision NO. DESSIN: Dwg Number
E A403

BIM 360//12347_BROOKSTREET/BRKST_12347_ARC_INT_R20.rvt

#18607