

METRIC
DISTANCES AND ELEVATIONS SHOWN ON THIS PLAN ARE IN METRES
AND CAN BE CONVERTED TO FEET BY DIVIDING BY 0.3048

TOPOGRAPHIC SURVEY OF
PART OF LOT 23
CONCESSION 12
GEOGRAPHIC TOWNSHIP OF GOULBOURN
CITY OF OTTAWA



FAIRHALL, MOFFATT & WOODLAND LIMITED
ONTARIO LAND SURVEYORS

ELEVATION NOTES

- ELEVATIONS SHOWN HEREON ARE REFERRED TO GEODETIC DATUM (CGVD28).
- ELEVATIONS FOR MANHOLE COVERS AND CATCH BASINS HAVE TO BE INDEPENDENTLY CONFIRMED BEFORE THEY CAN BE ACCEPTED FOR FINAL DESIGN OR CONSTRUCTION PURPOSES.
- IT IS THE RESPONSIBILITY OF THE USER OF THIS INFORMATION TO VERIFY THAT THE JOB BENCHMARK HAS NOT BEEN ALTERED OR DISTURBED AND THAT ITS RELATIVE ELEVATION AND DESCRIPTION AGREE WITH THE INFORMATION SHOWN ON THIS DRAWING.

UTILITY NOTES

- THIS DRAWING CANNOT BE ACCEPTED AS ACKNOWLEDGING ANY UNDERGROUND UTILITIES AND IT WILL BE THE RESPONSIBILITY OF THE USER TO CONTACT THE RESPECTIVE UTILITY AUTHORITIES FOR CONFIRMATION OR LOCATION.
- UNDERGROUND UTILITIES, AS REPORTED ON THIS DRAWING, ARE NOT BASED ON AN ACTUAL 'FIELD LOCATE' BY THE RESPECTIVE UTILITY AGENCIES BUT HAVE BEEN COMPILED FROM DATA OBTAINED FROM THE FOLLOWING SOURCE:
a) CITY OF OTTAWA
- BEFORE ANY WORK INVOLVING PROBING, EXCAVATING, ETC., A FIELD LOCATION OF UNDERGROUND PLANT BY THE PERTINENT UTILITY AUTHORITY IS MANDATORY.

NOTES

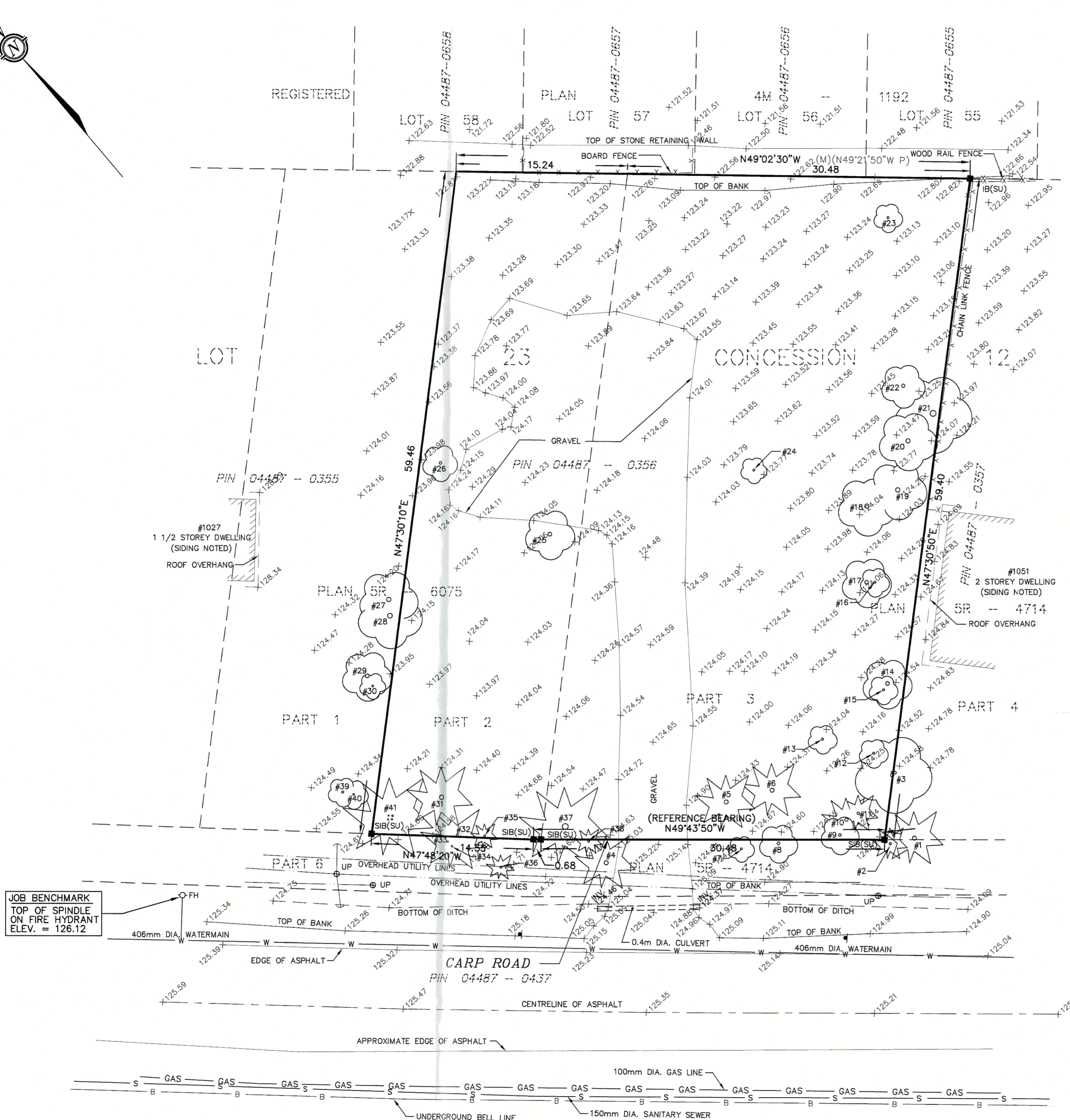
- BEARINGS HEREON ARE ASTRONOMIC AND ARE REFERRED TO THE NORTHERLY LIMIT OF CARP ROAD AS SHOWN ON PLAN SR-4714, HAVING A BEARING OF N49°43'50"W.
- REVISED APRIL 2021 WITH UPDATED ELEVATIONS, NEW GRAVEL DRIVE, AND CULVERT.
- REVISED SEP. 12, 2022 TO ADD SIGNIFICANT TREES.

TREE TABLE					
Point #	Type	Size (Dia.)	Point #	Type	Size (Dia.)
1	Coniferous	0.37	22	Deciduous	0.30
2	Coniferous	0.22	23	Deciduous	0.20
3	Deciduous	0.30, 0.24, 0.18	24	Deciduous	0.18
4	Coniferous	0.35	25	Deciduous	0.35
5	Coniferous	0.31	26	Deciduous	0.25
6	Coniferous	0.30	27	Deciduous	0.40
7	Deciduous	0.15	28	Deciduous	0.44
8	Deciduous	0.35	29	Deciduous	0.35
9	Deciduous	0.20	30	Deciduous	0.18
10	Coniferous	0.30	31	Coniferous	0.42
11	Coniferous	0.25	32	Coniferous	0.20
12	Deciduous	0.20	33	Coniferous	0.15
13	Deciduous	0.28	34	Coniferous	0.15
14	Deciduous	0.34	35	Coniferous	0.17
15	Deciduous	0.20	36	Coniferous	0.20
16	Deciduous	0.21	37	Coniferous	0.50
17	Deciduous	0.32	38	Coniferous	0.15
18	Deciduous	0.40	39	Deciduous	0.20
19	Deciduous	0.40	40	Deciduous	0.15
20	Deciduous	0.38	41	Coniferous	0.16, 0.12,
21	Deciduous	0.60			0.12, 0.14

LEGEND

- -- SURVEY MONUMENT SET
- -- SURVEY MONUMENT FOUND
- SIB -- STANDARD IRON BAR
- IB -- IRON BAR
- CC -- CUT CROSS
- CP -- CONCRETE PIN
- (P) -- PLAN 4M-1192
- (M) -- MEASURED
- (S) -- SET
- (SU) -- SOURCE UNKNOWN
- DIA. -- DIAMETER
- INV. -- INVERT
- PIN -- PROPERTY IDENTIFIER NUMBER
- ⊙ UP -- UTILITY POLE
- ⊖ -- GUY WIRE AND ANCHOR
- ☼ -- CONIFEROUS TREE
- ☼ -- DECIDUOUS TREE
- -- OVERHEAD UTILITY WIRES
- ⊕ FH -- FIRE HYDRANT

THIS IS NOT A
VALID COPY
UNLESS EMBOSSED
WITH SEAL



SURVEYOR'S CERTIFICATE

I CERTIFY THAT:
1. THIS SURVEY AND PLAN ARE CORRECT AND IN ACCORDANCE WITH THE SURVEYS ACT, THE SURVEYORS ACT, THE LAND TITLES ACT AND THE REGULATIONS MADE UNDER THEM.

2. THE SURVEY WAS COMPLETED ON DECEMBER 18, 2018.

2022/09/13
DATE

John H. Gutri
JOHN H. GUTRI
ONTARIO LAND SURVEYOR

Fairhall Moffatt & Woodland ONTARIO LAND SURVEYORS Surveying and Land Information Services 100-600 TERRY FOX DRIVE, KANATA, ONTARIO K2L 4B8 TEL: (613) 591-2580 FAX: (613) 591-1495 www.fmw.on.ca		JOB No. Y35400
		E 348391, N 5014806
REFERENCE No. 449 - 12 GOULB		S:\J085\Y35400\DWG\y354_topo_v3.dwg (kg)