

An exact copy of all working documents including, without limitations, the original of the present document or plan is kept on file by J.R.P. Engineering. Any modification carried out to this document or plan or to accompanying documents without written authorization by the engineer is prohibited.

Authorized modifications must be signed and sealed by an engineer and this engineer will be completely responsible for these modifications. J.R.P. Engineering is not and will not be responsible for the consequences of these modifications or for modifications carried out without its consent.

No	DESCRIPTION	DATE
0	ISSUED FOR REVIEW	DEC 23 2021

REVISIONS

client:

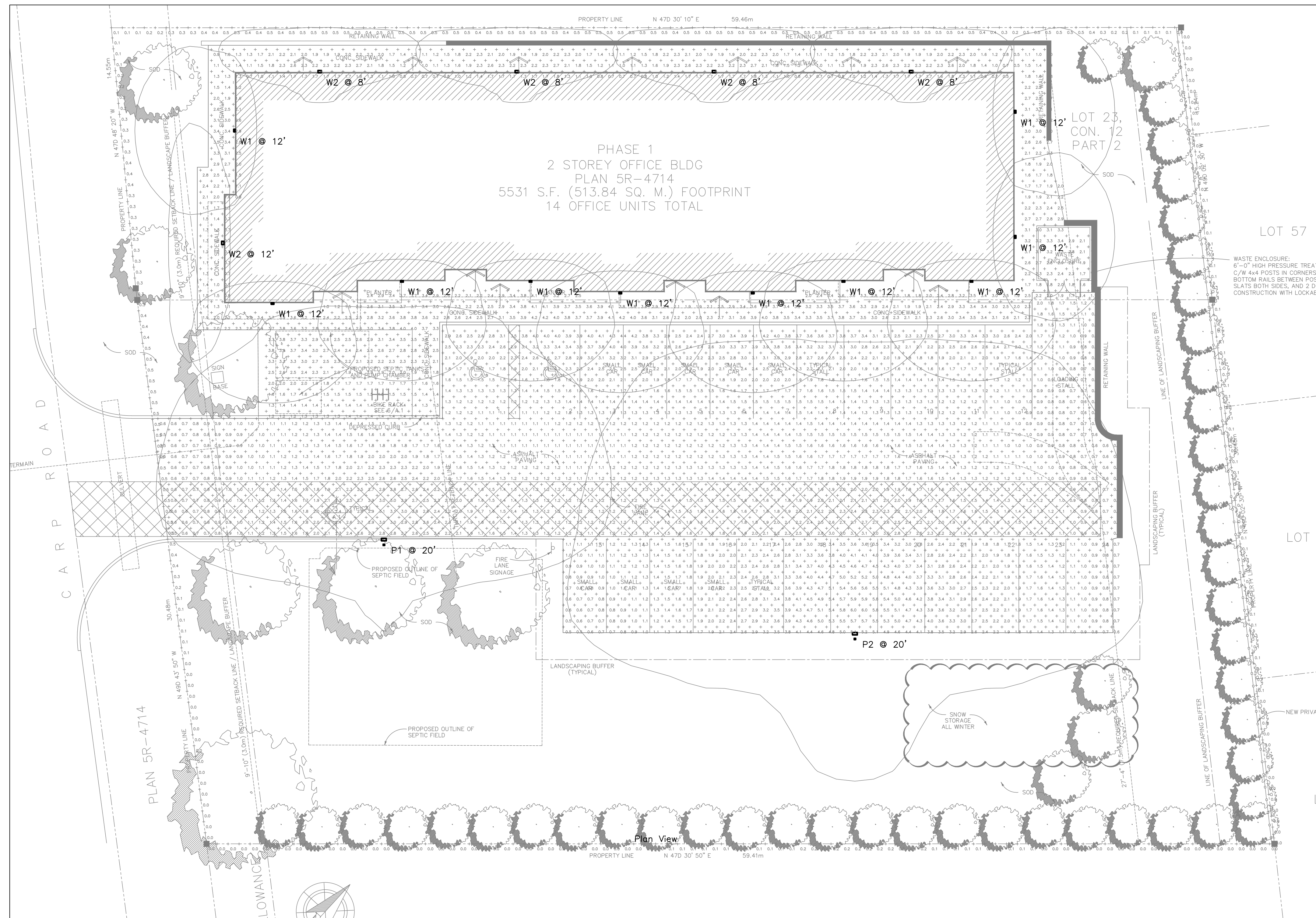
project: **TWO STORY OFFICE BUILDING**

1037 CARP ROAD
 OTTAWA, ONTARIO

drawing title: **ELECTRICAL SITE LIGHTING PLAN**

scale:	AS NOTED	drawn by:	C.M.
designed by:	C.M.	reviewed by:	M.G.
approved by:	M.G.	date:	DEC 2022

project no.: 100-2302
 drawing no.: SP-E1
 of 1



1 SITE LIGHTING PLAN
 SP-E1 3/32" = 1' 0"

LIGHTING FIXTURE SCHEDULE						
TYPE	MAKE/MODEL	VOLTAGE	MOUNT	WATTAGE	TEMPERATURE	NOTES
P1	LITHONIA LIGHTING RSX1 LED P1 30K R4	120V	POLE	52	3000K	ALL LIGHTING TO BE TIED INTO COMMON PHOTOCELL
P2	LITHONIA LIGHTING RSX1 LED P3 30K R4	120V	POLE	110	3000K	
W1	LITHONIA LIGHTING WDGE1 LED P1 30K 80CRI VW	120V	WALL PACK	10	3000K	
W2	LITHONIA LIGHTING WDGE2 LED P0 30K 70CRI T1S	120V	WALL PACK	7	3000K	