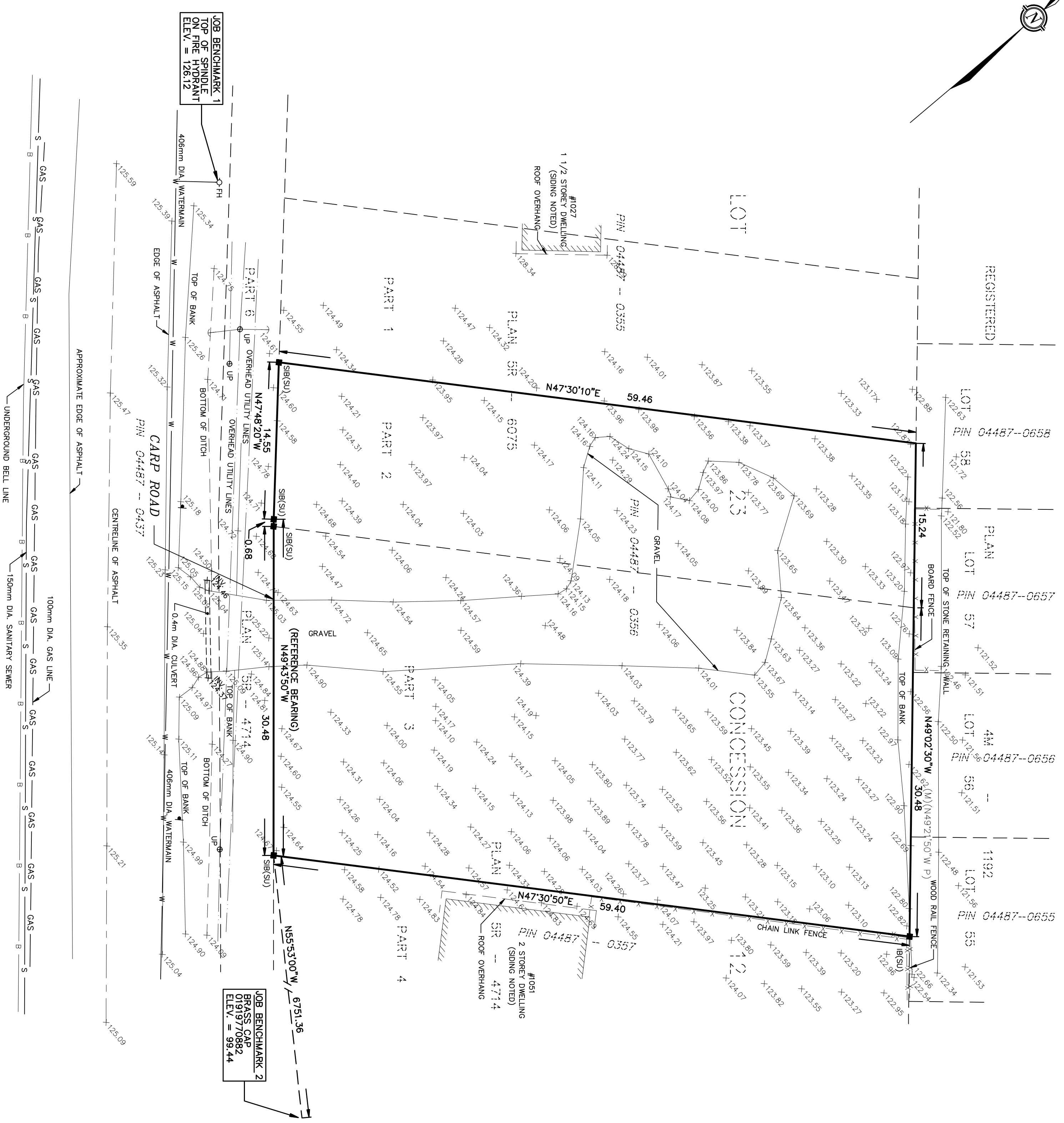
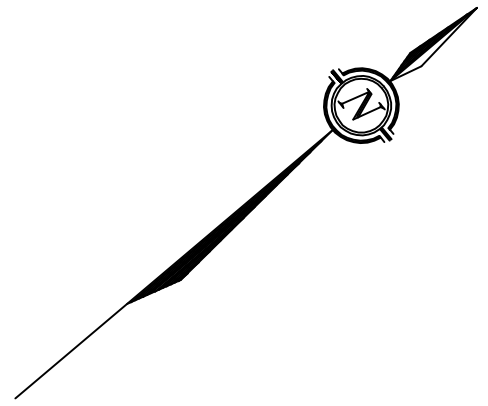
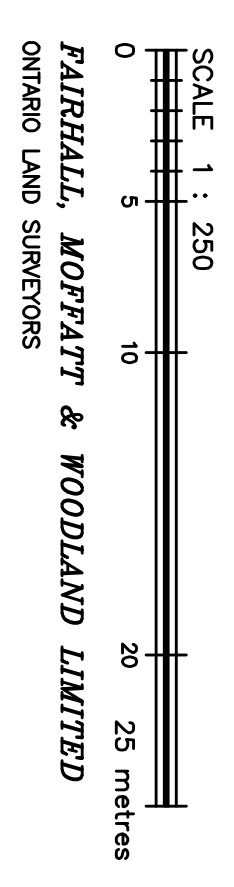


**METRIC**  
DISTANCES AND ELEVATIONS SHOWN ON THIS PLAN ARE IN METRES  
AND CAN BE CONVERTED TO FEET BY DIVIDING BY 0.3048



TOPOGRAPHIC SURVEY OF  
PART OF LOT 23  
CONCESSION 12  
GEOGRAPHIC TOWNSHIP OF GOULBOURN  
CITY OF OTTAWA



**ELEVATION NOTES**

1. ELEVATIONS SHOWN HEREON ARE REFERRED TO GEODETIC DATUM (CGVD28).
2. ELEVATIONS FOR MANHOLE COVERS AND CATCH BASINS HAVE TO BE INDEPENDENTLY CONFIRMED BEFORE THEY CAN BE ACCEPTED FOR FINAL DESIGN OR CONSTRUCTION PURPOSES.
3. IT IS THE RESPONSIBILITY OF THE USER OF THIS INFORMATION TO VERIFY THAT THE JOB BENCHMARKS HAVE BEEN ALTERED OR DESTROYED AND THAT UTILITIES INFORMATION AND DESCRIPTIONS AGREE WITH THE INFORMATION SHOWN ON THIS DRAWING.

**UTILITY NOTES**

1. THIS DRAWING CANNOT BE ACCEPTED AS ACKNOWLEDGING ANY UNDERGROUND UTILITIES AND IT WILL BE THE RESPONSIBILITY OF THE USER TO CONTACT THE RESPECTIVE UTILITY AUTHORITIES FOR CONFIRMATION OR LOCATION.
2. UNDERGROUND UTILITIES, AS REPORTED ON THIS DRAWING, ARE NOT BASED ON AN ACTUAL FIELD LOCATE BY THE RESPECTIVE UTILITY AGENCIES BUT HAVE BEEN COMPILED FROM DATA OBTAINED FROM THE FOLLOWING SOURCE:  
a) CITY OF OTTAWA.
3. BEFORE ANY WORK INVOLVING PROBING, EXCAVATING, ETC., A FIELD LOCATION OF UNDERGROUND PLANT BY THE PERTINENT UTILITY AUTHORITY IS MANDATORY.

**NOTES**

1. BEARINGS HEREON ARE ASTRONOMIC AND ARE REFERRED TO THE NORTHERLY LIMIT OF CARP ROAD AS SHOWN ON PLAN SR-4714, HAVING A BEARING OF N49°43'50\"/>
2. REVISED APRIL 2021 WITH UPDATED ELEVATIONS AND ADDING NEW GRAVEL DRIVE, AND CULVERT.

**LEGEND**

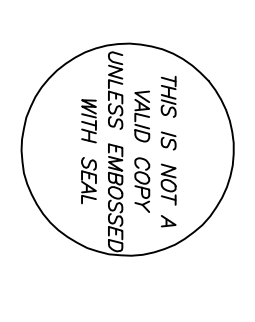
- SURVEY MONUMENT SET
- SURVEY MONUMENT FOUND
- STANDARD IRON BAR
- IRON BAR
- CUT CROSS
- CONCRETE PIN
- (P) PLAN 44-1192
- (M) MEASURED
- (S) SET
- (SU) SOURCE UNKNOWN
- DIAMETER
- INVERT
- INVERT IDENTIFIER NUMBER
- ⊕ UTILITY POLE
- GUY WIRE AND ANCHOR
- CONIFEROUS TREE
- DECIDUOUS TREE
- OVERHEAD UTILITY WIRES
- ⊕ FH — FIRE HYDRANT

**SURVEYOR'S CERTIFICATE**

I CERTIFY THAT:  
1. THIS SURVEY AND PLAN ARE CORRECT AND IN ACCORDANCE WITH THE SURVEY ACT, THE SURVEYORS ACT, THE LAND TITLES ACT AND THE REGULATIONS MADE UNDER THEM.

2. THE SURVEY WAS COMPLETED ON DECEMBER 18, 2018.

DATE \_\_\_\_\_  
JOHN H. GUTRI  
ONTARIO LAND SURVEYOR



ASSOCIATION OF ONTARIO  
LAND SURVEYORS  
PLAN SUBMISSION FORM  
2082681

**Fairhall Moffatt & Woodland**  
L I M I T E D  
Ontario Land Surveyors  
Surveying and Land Information Services  
100-020 TERRY FOX DRIVE, KANATA, ONTARIO K2L 4B6  
TEL: (451) 591-5151 FAX: (451) 591-1459  
WWW.FMWD.COM

OTTAWA

JOB No. Y35400  
E 348391, N 5014806  
REFERENCE No. 449 - 12 00ULB  
S:\Y35400\Y35400\Y35400.dwg  
Y354\_Topo\_V2.dwg (kg)

© COPYRIGHT 2021. REPRODUCTION, ALTERATION OR DISTRIBUTION OF THIS PLAN WITHOUT THE WRITTEN CONSENT OF FAIRHALL, MOPFATT & WOODLAND LIMITED IS PROHIBITED.