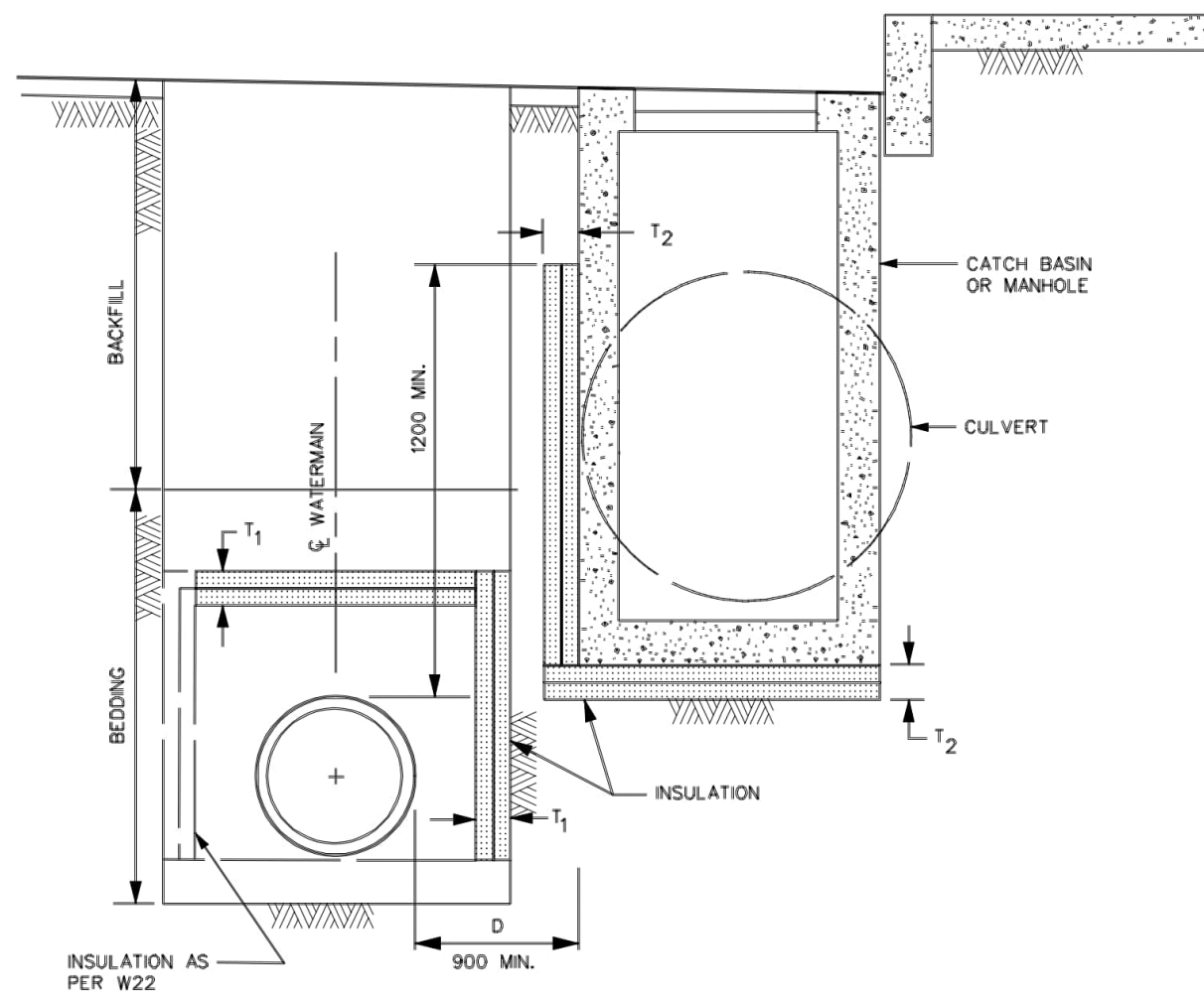


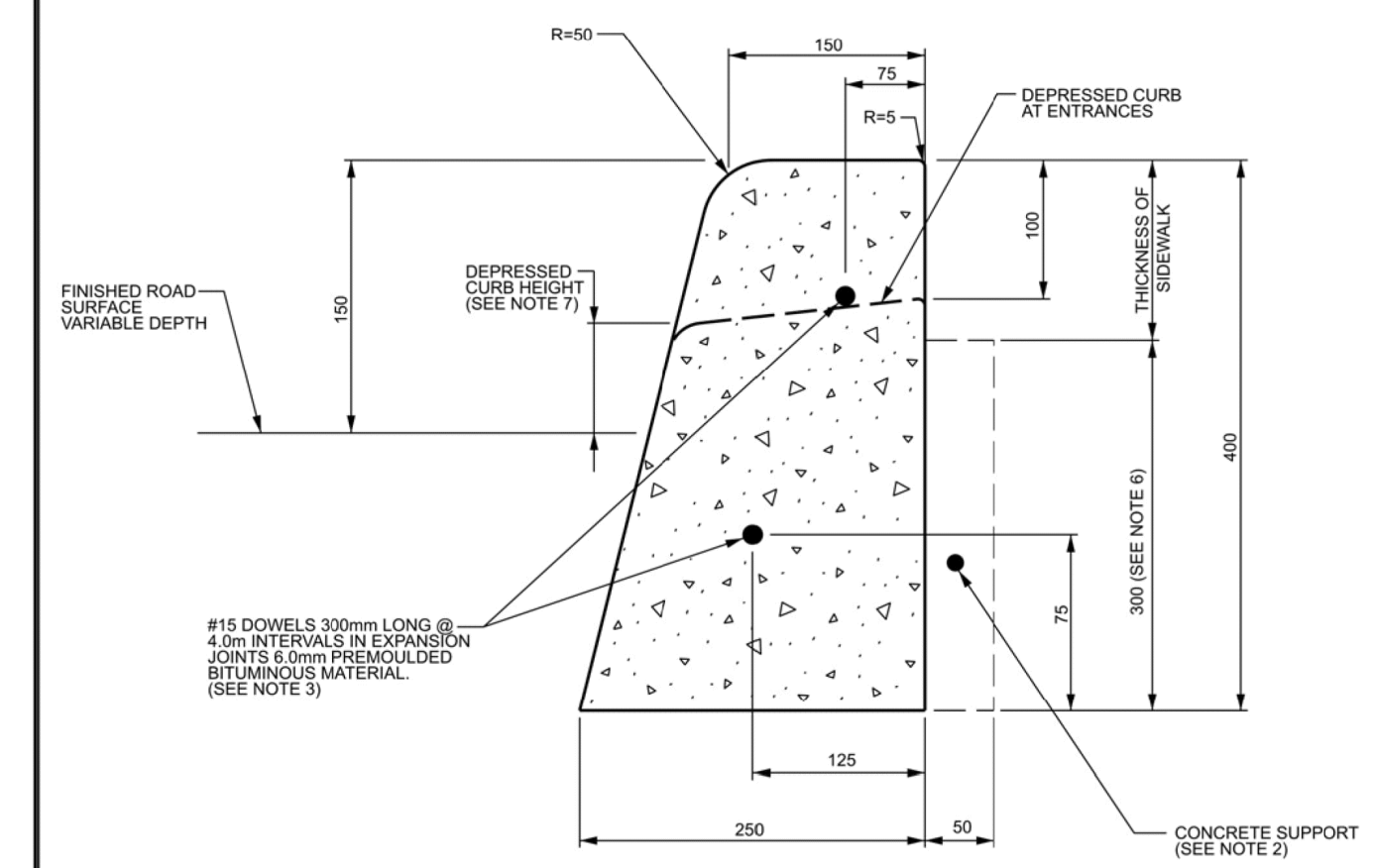
INSULATION REFERENCE TABLE	
D DISTANCE FROM C.B. OR M.H. WALL	T REQUIRED INSULATION THICKNESS T = T <sub>1</sub> + T <sub>2</sub>
2400 - 1800 mm.	50 mm
1800 - 1500 mm.	75 mm
1500 - 1200 mm.	100 mm
1200 - 900 mm.	125 mm



- NOTES
- FOR WATERMANS & SERVICES IN PROXIMITY TO CATCHBASINS MAINTENANCE HOLES, CULVERTS ETC.
- INSULATION SHALL EXTEND 1000 mm EACH WAY FROM THE ENDS OF THE STRUCTURE, PARALLEL TO THE WATERMAN.
  - STAGGER JOINTS OF MULTIPLE SHEETS.
  - ALL DIMENSIONS ARE IN MILLIMETRES UNLESS SHOWN OTHERWISE.
  - INSULATION CAN BE AT EITHER LOCATION OR BOTH.

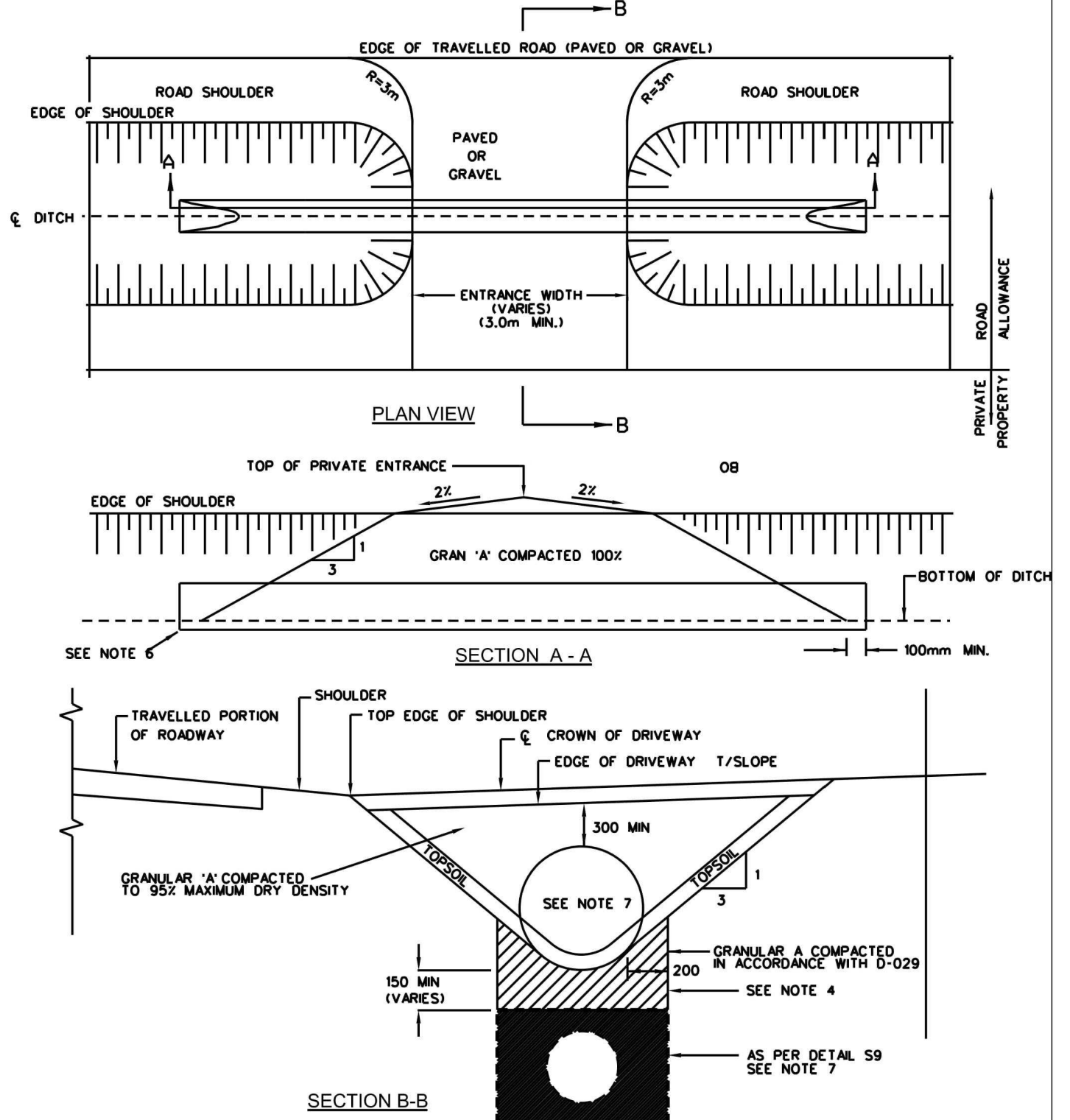
DATE: MAY 2001  
REV. DATE: FEB 2004  
DWG. No.: W2.3

Ottawa THERMAL INSULATION OF WATER-MAINS AT OPEN STRUCTURES



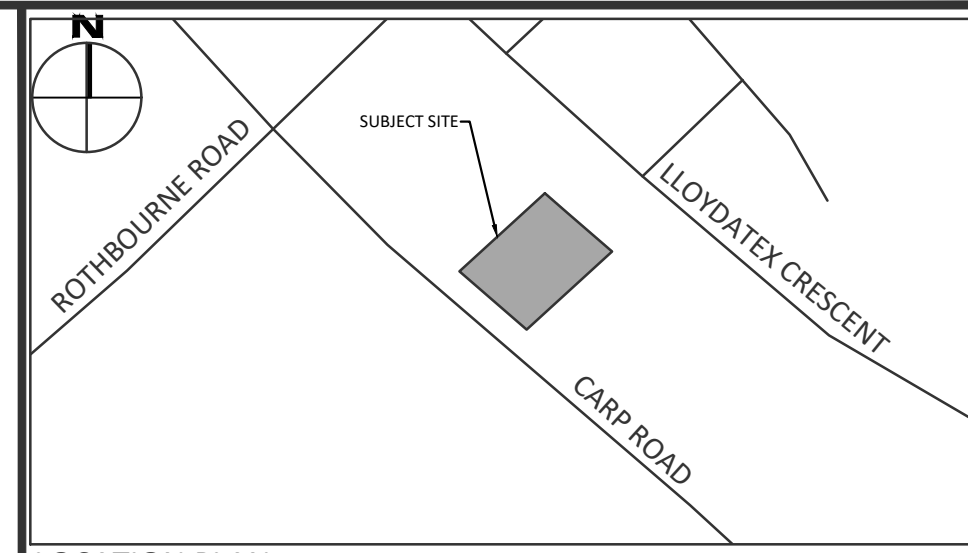
- CONCRETE BARRIER CURB
- NOTES
- THE FULL CURB DEPTH SHALL BE CARRIED THROUGH THE DEPRESSED ACCESS CROSSING.
  - A CONCRETE SUPPORT IS REQUIRED WHEN BUILT ADJACENT TO THE SIDEWALK.
  - IF AN EXTRUSION CURBING MACHINE IS USED, THE EXPANSION BITUMINOUS MATERIAL AND THE #15 DOWELS ARE TO BE PLACED AT THE END OF THE EXTRUSION.
  - ALL DIMENSIONS ARE IN MILLIMETRES UNLESS SHOWN OTHERWISE.
  - DUMMY JOINTS SHALL BE 25mm DEEP, FRONT, BACK AND TOP OF SECTION AT 4m SPACING OR MATCH JOINTING WHERE SIDEWALK IS ADJACENT.
  - FOR DEPRESSED CURB AT ENTRANCES USE 250.
  - DEPRESSED CURB HEIGHT - FOR PEDESTRIAN CURB RAMPS 0 TO 6 mm AND FOR PRIVATE ENTRANCES 0 TO 13mm.
- N.T.S.

Ottawa CONCRETE BARRIER CURB FOR GRANULAR BASE PAVEMENT (MODIFIED OPSD-600.110)  
DATE: JANUARY 2003  
REV. DATE: MARCH 2021  
DWG. No.: SC1.1



- NOTES
- APPROVED NEW CULVERT MATERIAL ONLY, MIN. 500mm UNLESS SPECIFIED OTHERWISE, DITCH AND CULVERT TO BE SIZED ACCORDING TO SEWER DESIGN GUIDELINE MANUAL.
  - LENGTH OF CULVERTS IS DEPENDENT UPON THE DEPTH OF DITCH AND WIDTH OF ENTRANCE.
  - ENTRANCE CULVERTS GREATER THAN 900mm DIA OR MULTIPLE CULVERTS MUST BE APPROVED PRIOR TO INSTALLATION. CULVERTS OVER 12m LONG AND HEADWALLS REQUIRE APPROVAL AND PERMIT BY THE CITY.
  - IN FROST SUSCEPTIBLE SOILS SPECIAL BEDDING CONDITIONS WILL BE REQUIRED.
  - REMOVE ALL ORGANICS FROM SIDE SLOPES AND DITCH BOTTOM PRIOR TO PLACING CULVERT AND GRANULARS.
  - CULVERT TO BE COUNTERSUNK 10% OF ITS DIAMETER BELOW FINISHED DITCH INVERT.
  - WHERE SPECIFIED, APPROVED DITCHED PIPE TO BE AT A MINIMUM GRADE OF 0.5% AND BE NON-PERFORATED TYPE UNDER CULVERTS.
  - SEE MS 22.15 FOR APPROVED PRODUCTS UNLESS OTHERWISE STATED IN THE CONTRACT, CONSTRUCTION AS PER OPS 421.
  - ALL DIMENSIONS ARE IN MILLIMETRES UNLESS SHOWN OTHERWISE.

Ottawa PRIVATE ENTRANCE DETAIL - RURAL  
DATE: MAY 2001  
REV. DATE: MARCH 2016  
DWG. No.: S26

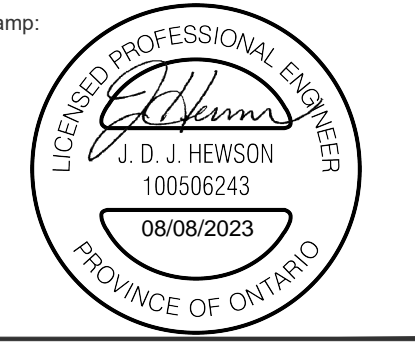


LOCATION PLAN  
LEGEND

No.	Revisions	Date
03	ISSUED FOR SITE PLAN CONTROL	AUG. 04, 2023
02	ISSUED FOR MUNICIPAL REVIEW	MAR. 24, 2023
01	ISSUED FOR MUNICIPAL REVIEW	NOV. 29, 2022
No.	Revisions	Date

Check and verify all dimensions before proceeding with the work Do not scale drawings

McINTOSH PERRY  
115 Walgreen Road, RR3, Carp, ON K0A 1L0  
Tel: 613-836-2184 Fax: 613-836-3742  
www.mcintoshperry.com



Client: JIM BELL ARCHITECTURE DESIGN INC.  
26 BERT G ARGUE DRIVE  
STITTSVILLE, ON K2S 1X9

Project: PHASE 1 - Office Building  
1037 CARP ROAD, OTTAWA, ON

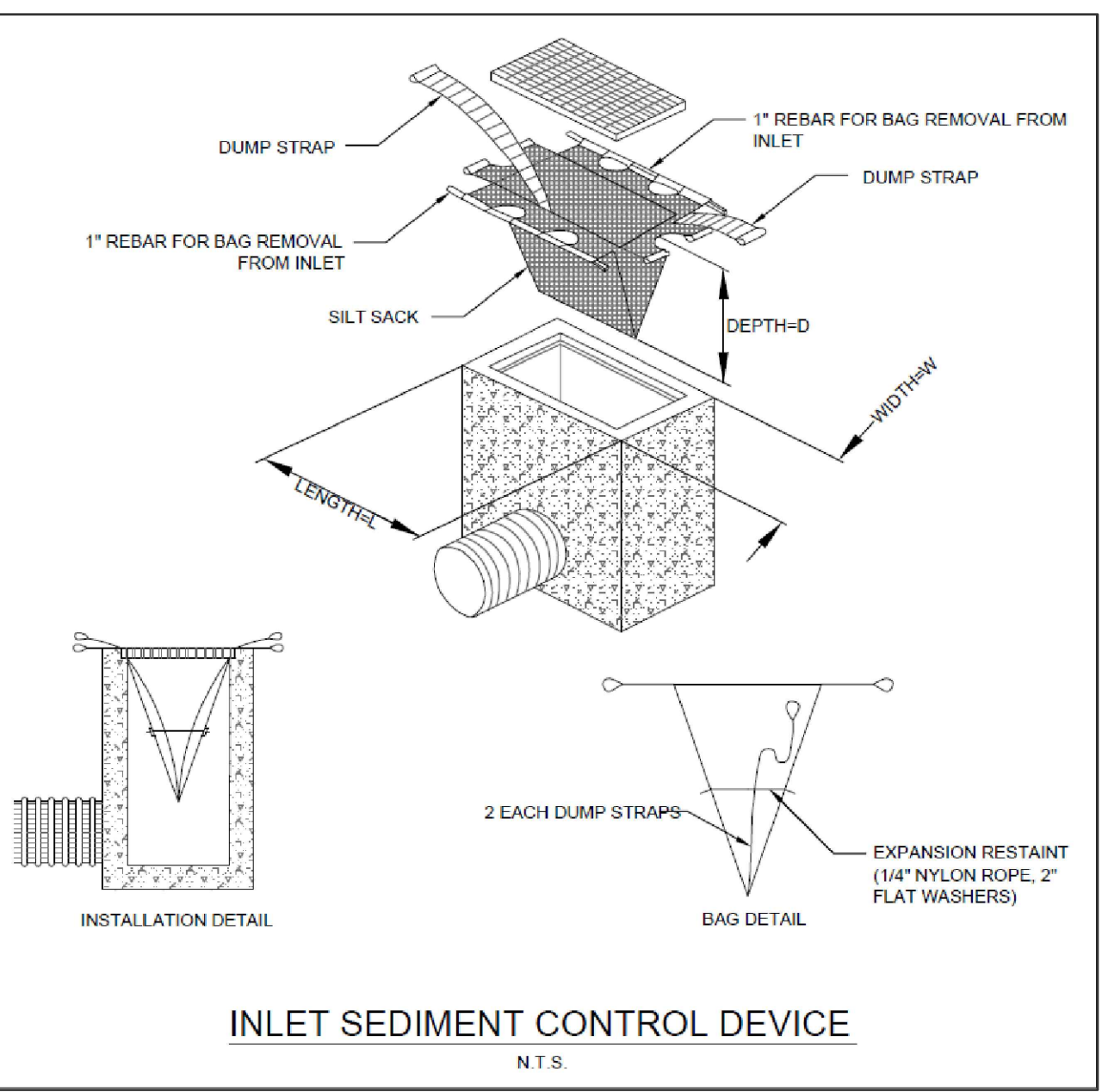
Drawing Title: DETAIL SHEET

Scale: N.T.S. Project Number: CP-19-0125

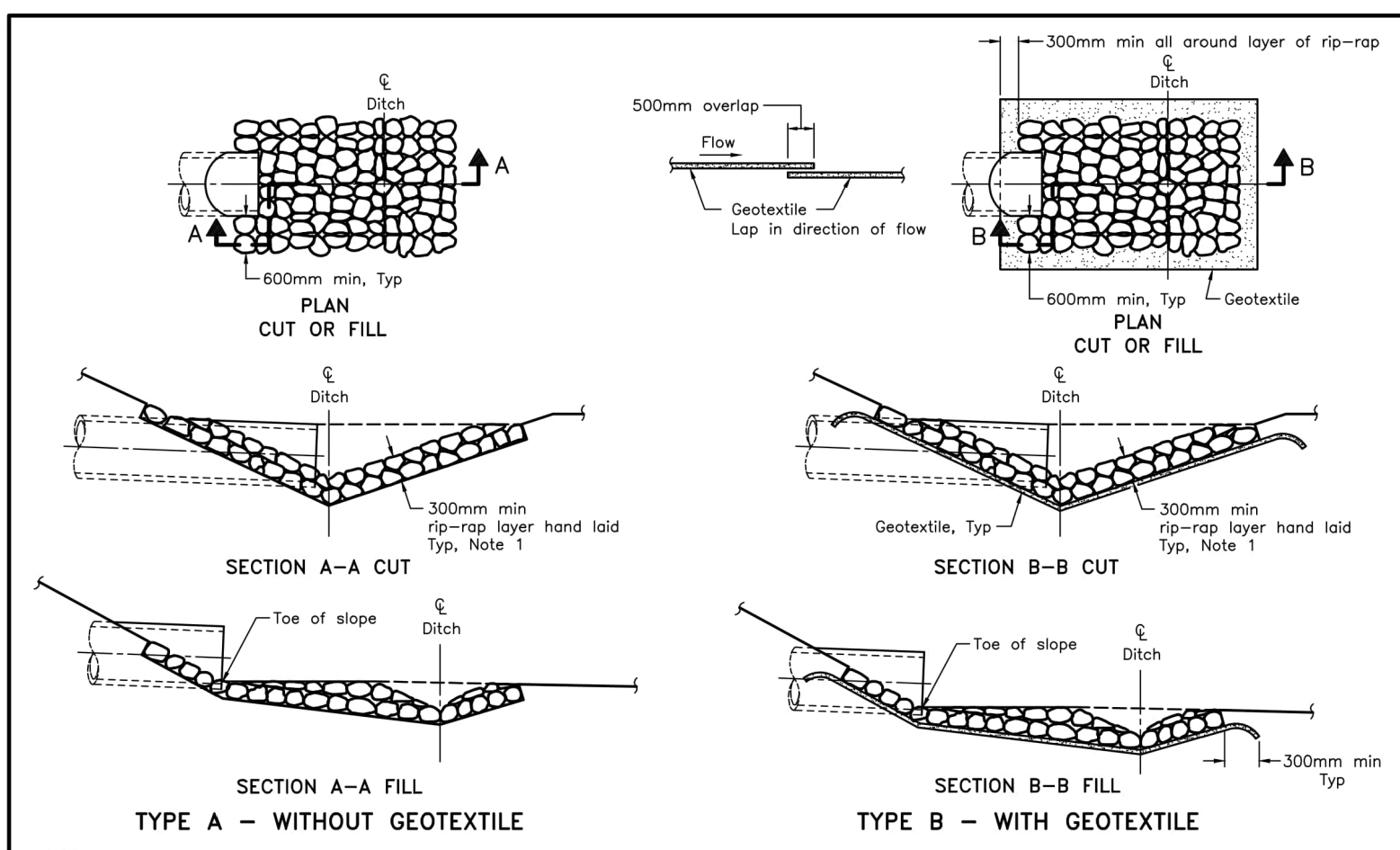
Drawn By: FV Drawing Number: C100

Checked By: R.D.F.

Designed By: B.G.S.



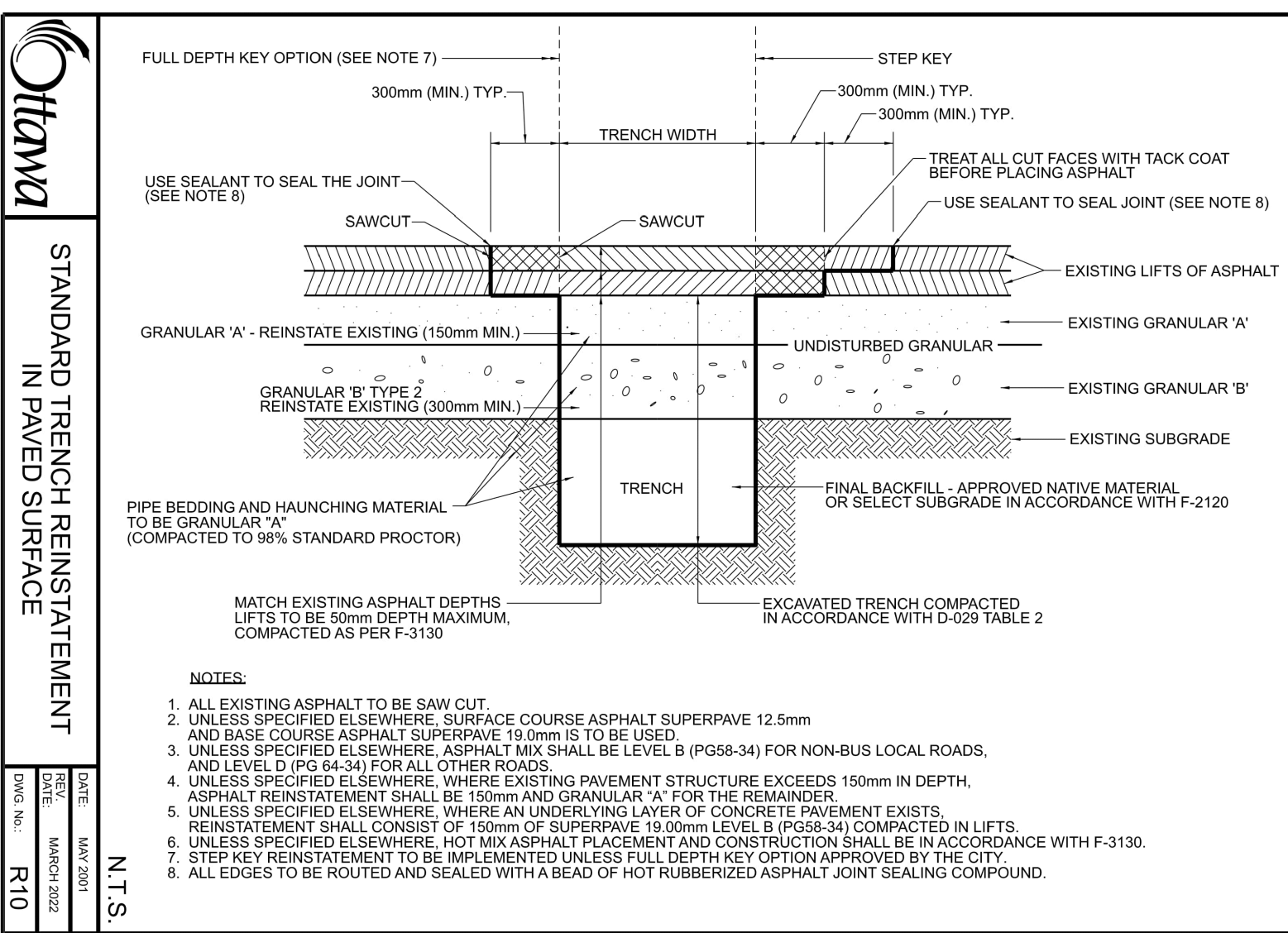
INLET SEDIMENT CONTROL DEVICE  
N.T.S.



NOTES

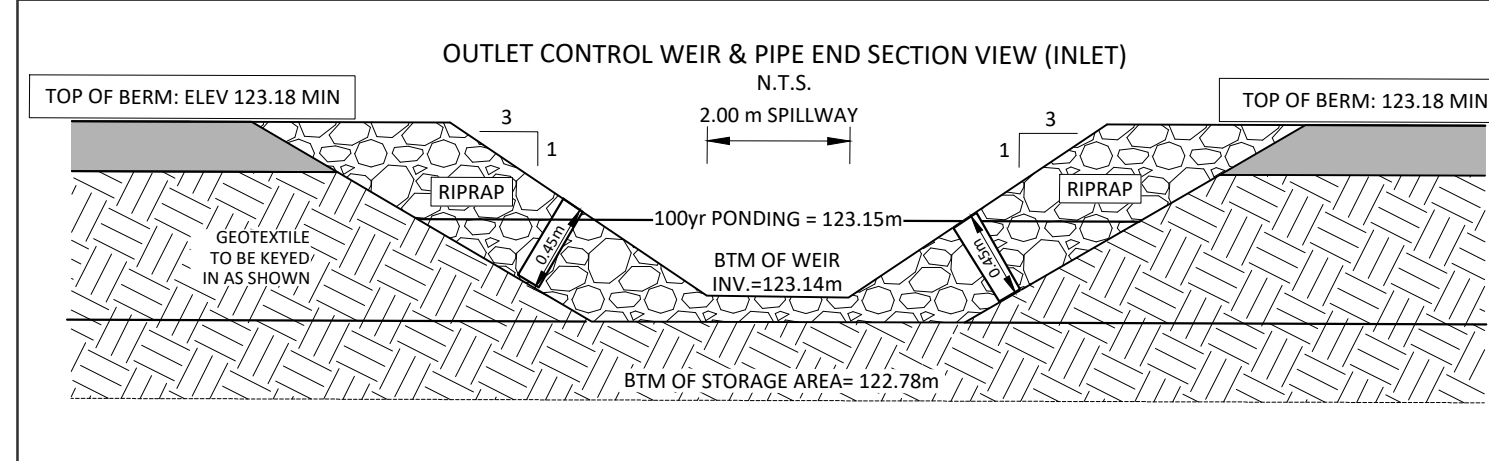
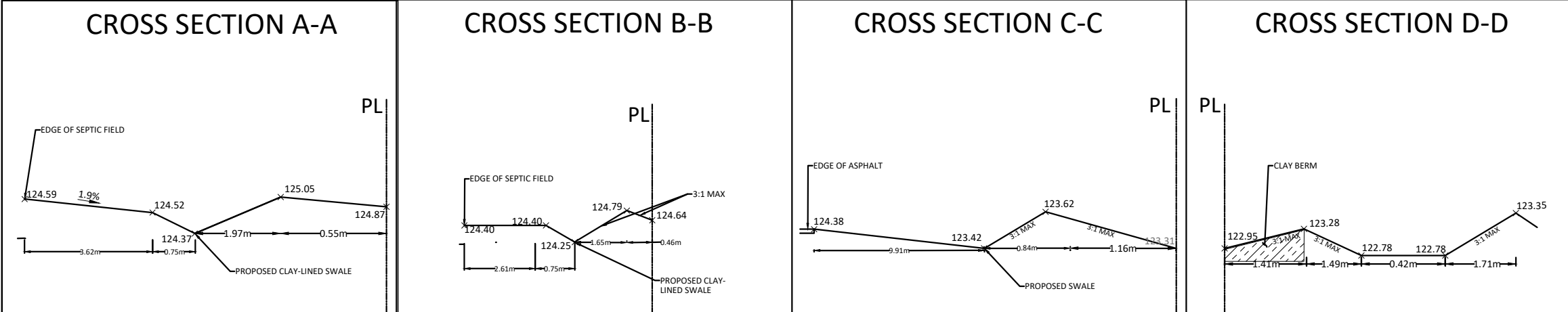
- The thickness of the rip-rap layer shall be at least 1.5 times the rip-rap mean diameter.
- All dimensions are in millimetres unless otherwise shown.

ONTARIO PROVINCIAL STANDARD DRAWING  
Nov 2018 | Rev 3  
GENERAL RIP-RAP LAYOUT FOR SEWER AND CULVERT OUTLETS  
OPSD 810.010



STANDARD TRENCH REINSTATEMENT IN PAVED SURFACE  
N.T.S.  
DATE: MARCH 2002  
DWG. No.: R10

CROSS SECTIONS



FILENAME: (U:\Ottawa\011 Project - Proposed\2019\06\CP19-0125 - Drawings\CP-19-0125\_Presentation.dwg  
DATE PAVED: Tuesday, August 08, 2023 1:45:54 PM  
LAST PLOTTED: Tuesday, August 08, 2023 1:45:54 PM  
C:\Users\jhe\OneDrive\Desktop\CP-19-0125 - Drawings\CP-19-0125\_Presentation.dwg

D07-12-21-0168