

1 ELECTRICAL SITE SERVICES
E-010B 1:400

NOTES:

THESE DESIGN DOCUMENTS ARE PREPARED SOLELY FOR THE USE BY THE PARTY WITH WHOM THE DESIGN PROFESSIONAL HAS ENTERED INTO A CONTRACT AND THERE ARE NO REPRESENTATIONS OF ANY KIND MADE BY THE DESIGN PROFESSIONAL TO ANY PARTY WITH WHOM THE DESIGN PROFESSIONAL HAS NOT ENTERED INTO A CONTRACT.

THE PAPER COPY OF THE DRAWINGS ISSUED FOR BUILDING PERMIT AND/OR TENDER WILL TAKE PRECEDENCE OVER ELECTRONIC COPIES.

THE ENGINEER WAVES ANY AND ALL RESPONSIBILITY AND LIABILITY FOR PROBLEMS THAT ARISE FROM FAILURE TO FOLLOW THESE PLANS, SPECIFICATIONS AND THE DESIGN INTENT THEY CONVEY, OR FOR PROBLEMS WHICH ARISE FROM OTHER FAILURE TO OBTAIN AND / OR FOLLOW ENGINEER'S GUIDANCE WITH RESPECT TO ANY ERRORS, OMISSIONS, INCONSISTENCIES, AMBIGUITIES OR CONFLICTS WHICH ARE ALLEGED.

THIS DRAWING IS THE PROPERTY OF ALFA+ PROJECT LEADERS INC. AND ALL COPYRIGHTS ARE RESERVED. NO USE OF THIS DRAWING MAY BE MADE WITHOUT EXPRESS WRITTEN CONSENT.

DO NOT SCALE DRAWINGS.

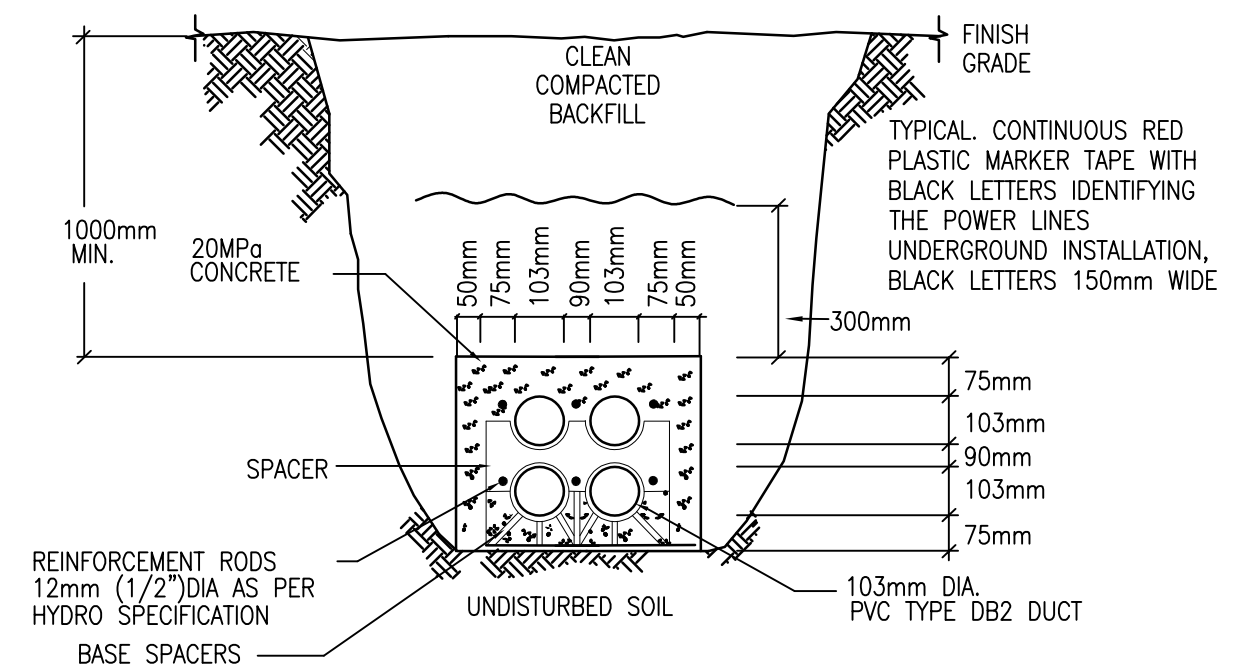
REV.	DESCRIPTION:	DATE:
3.	ISSUED FOR SITE PLAN APPLICATION	AUG 23/21
2.	ISSUED FOR HYDRO OTTAWA REVIEW	JUL 21/21
1.	ISSUED FOR REVIEW	JUL 21/21

ALFA+
PROJECT LEADERS
MECHANICAL AND ELECTRICAL ENGINEERS
OTTAWA, ONTARIO
WWW.ALFAPLUS.CA
(613) 890-1134
HELLO@ALFAPLUS.CA

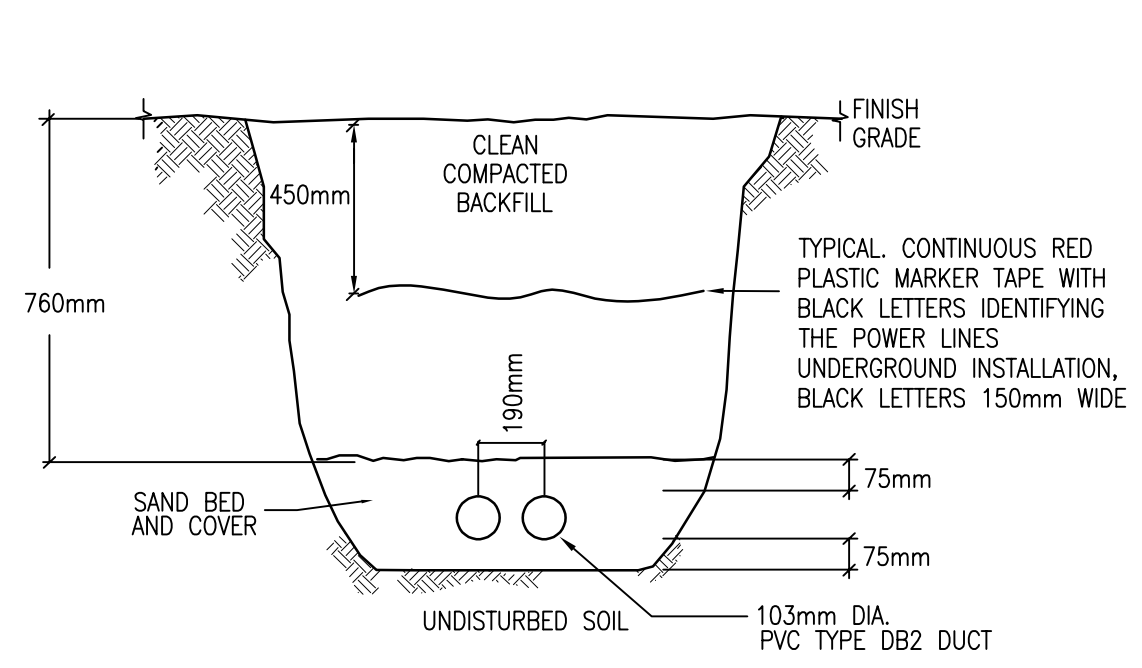
- GENERAL NOTES:**
- THE ELECTRICAL CONTRACTOR SHALL MAKE ARRANGEMENTS FOR A SITE MEETING WITH THE GENERAL CONTRACTOR AND HYDRO OTTAWA PRIOR TO INSTALLATION OF BUILDING POWER SUPPLY INFRASTRUCTURE. THE PURPOSE OF THE MEETING IS TO COORDINATE THE WORK, REVIEW THE RESPONSIBILITIES OF HYDRO OTTAWA, THE GENERAL CONTRACTOR AND THE ELECTRICAL CONTRACTOR TO ENSURE THAT THE INSTALLATION OF THE TRANSFORMER AND CABLE DUCTS ADHERE TO HYDRO OTTAWA SPECIFICATIONS.
 - COORDINATE UNDERGROUND SERVICES WITH ALL OTHER TRADES PRIOR TO COMMENCEMENT OF WORK.
 - GROUNDING FOR PAD MOUNTED TRANSFORMER SHALL BE BY ELECTRICAL CONTRACTOR. GROUNDING SHALL BE AS PER HYDRO OTTAWA STANDARDS, THE ONTARIO ELECTRICAL SAFETY CODE AND SHALL BE APPROVED BY THE ELECTRICAL SAFETY AUTHORITY. ARRANGE GROUNDING TEST WITH HYDRO OTTAWA INSPECTOR. GROUNDING RESISTANCE SHALL BE A MAXIMUM OF 250HMS BEFORE ENERGIZATION OF THE SERVICE SHALL TAKE PLACE.
 - CONTRACTOR SHALL CONFIRM EXACT RUN OF ALL SITE SERVICES AND MARK RECORD DRAWINGS WITH DIMENSIONS TO REFLECT AS BUILT CONDITIONS.
 - CONTRACTOR IS TO PROVIDE PULL BOXES FOR ALL SITE WIRING TO COMPLY TO ONTARIO ELECTRICAL SAFETY CODE, LATEST EDITION. MARK RECORD DRAWINGS WITH DIMENSIONED LOCATION AND SIZE OF PULL BOXES.
 - CONDUCTOR SIZE FOR SITE LIGHTING TO BE MINIMUM #10 AWG. ALL LIGHTING CONDUITS SHALL BE MINIMUM 2" PVC TYPE DB-2.

- DRAWING NOTES:**
- NEW CUSTOMER OWNED MINISUB SIZE AS SHOWN. PROVIDE 2200mm X 3900mm US1 PRECAST BASE AND PAD WITH MANHOLE FOR TRANSFORMER. PROVIDE PRIMARY GROUND AS PER HYDRO OTTAWA DETAIL UGS0002 AND PROTECTIVE BOLLARDS AS PER HYDRO OTTAWA DETAIL UFS0001 AND BOND TO GROUND GRID. COORDINATE WORK WITH HYDRO OTTAWA AND INSPECTION AUTHORITY.
 - PROVIDE 19.8m (65'-0") CLASS 1 WOOD POLE AND 200A LOAD BREAK 3-POLE GANG OPERATED SWITCH WITH 150A FUSES. PROVIDE GROUNDING AND CABLE GUARDS AS PER SPECIFICATIONS AND AS OESC REQUIREMENTS.
 - PROVIDE #2/0 ACSR OVERHEAD 27KV CONDUCTORS FROM HYDRO POLE TO ACROSS BANK STREET TO PRIVATELY OWNED POLE ON PROPERTY AS SHOWN.
 - APPROXIMATE LOCATION OF HYDRO OTTAWA HIGH VOLTAGE POWER POLE AND GUY WIRES.
 - PROVIDE GUY WIRE ANCHOR AND GUY WIRE, AT LEAST 1/3 OF POLE HEIGHT ABOVE GRADE AS PER OESC REQUIREMENTS.
 - PROVIDE 3X(1C, 2/0 COPPER XLPO 27KV, 90°C WITH 33% CONCENTRIC NEUTRAL) IN DUCT BANK, ONE CABLE PER DUCT FROM CUSTOMER OWNED POLE TO TRANSFORMERS AS SHOWN.
 - RUN SECONDARY UNDERGROUND FEEDER TO BUILDING 'A' UTILITY ROOM IN LEVEL 1 PARKING GARAGE.
 - RUN SECONDARY FEEDER TO BUILDING 'B' UTILITY ROOM IN LEVEL 1 PARKING GARAGE.

- DRAWING NOTES (CONT'D):**
- RUN SECONDARY UNDERGROUND FEEDER FROM BUILDING 'A' SWITCHBOARD TO EXISTING BUILDING ELECTRICAL ROOM.
 - RUN SECONDARY UNDERGROUND FEEDER TO BUILDING 'C' UTILITY ROOM IN LEVEL 1 PARKING GARAGE.
 - TERMINATE AND CAP BELL AND ROGERS UNDERGROUND DUCT BANK AT THE PROPERTY LINE RUNNING FROM MAIN TELECOM ROOM.



2 TRENCH DETAIL - 4 CELL CONCRETE ENCASED
E-010B N.T.S.



3 TRENCH DETAIL - 2 CELL
E-010B N.T.S.

STAMP: **ALFA+ PROJECT LEADERS**
A. SALAH
100072517
Aug 23/21
PROVINCE OF ONTARIO
PROJECT NORTH

PROJECT:
UPPER HUNT CLUB CENTRE
2600 BANK STREET
OTTAWA, ONTARIO

DRAWING:
ELECTRICAL:
SITE PLAN SERVICES - NEW

DATE: MAY 2021	DRAWN: F.S.	DESIGNED: F.S./A.S.	CHECKED: A.S.
SCALE: AS SHOWN	PROJECT NO: 21008	DRAWING NO: E-010B	OF 3

NOTES:

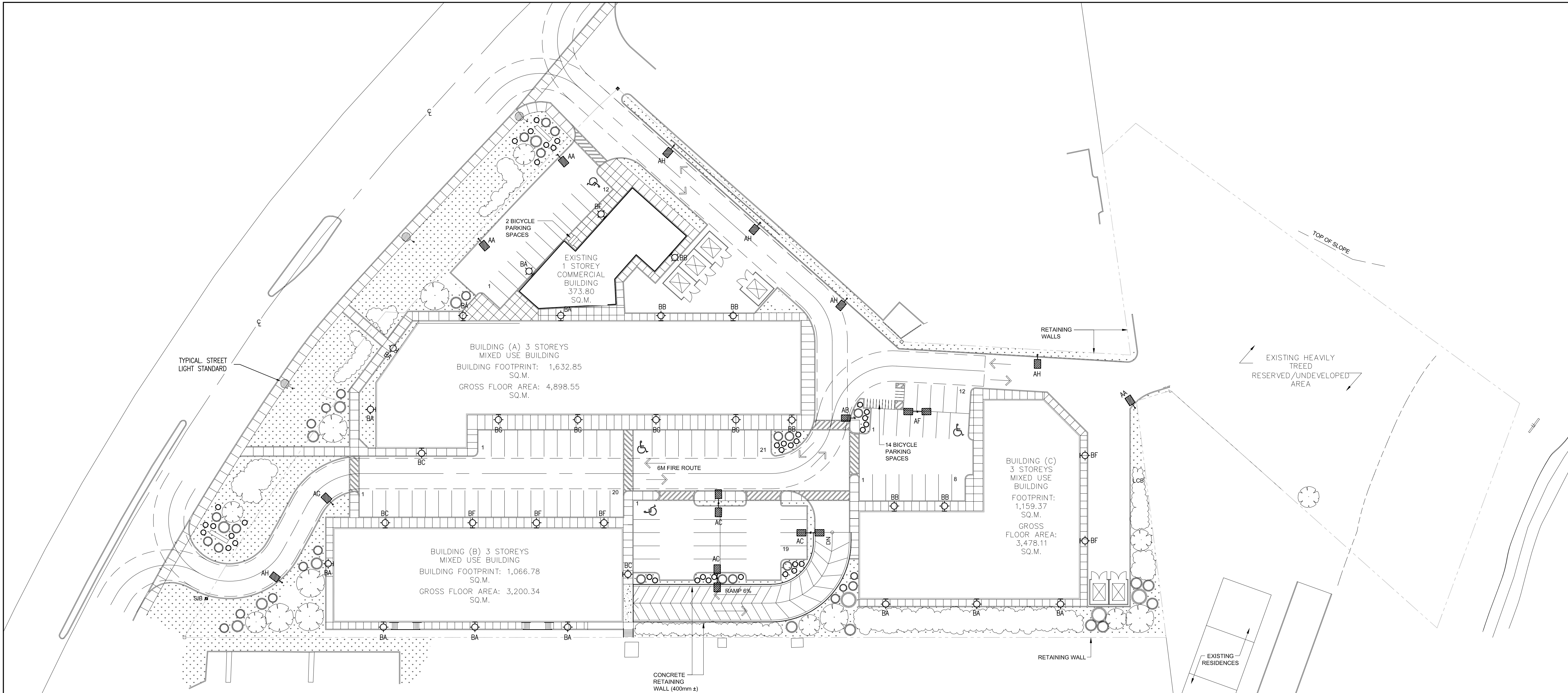
THESE DESIGN DOCUMENTS ARE PREPARED SOLELY FOR THE USE BY THE PARTY WITH WHOM THE DESIGN PROFESSIONAL HAS ENTERED INTO A CONTRACT AND THERE ARE NO REPRESENTATIONS OF ANY KIND MADE BY THE DESIGN PROFESSIONAL TO ANY PARTY WITH WHOM THE DESIGN PROFESSIONAL HAS NOT ENTERED INTO A CONTRACT.

THE PAPER COPY OF THE DRAWINGS ISSUED FOR BUILDING PERMIT AND/OR TENDER WILL TAKE PRECEDENCE OVER ELECTRONIC COPIES.

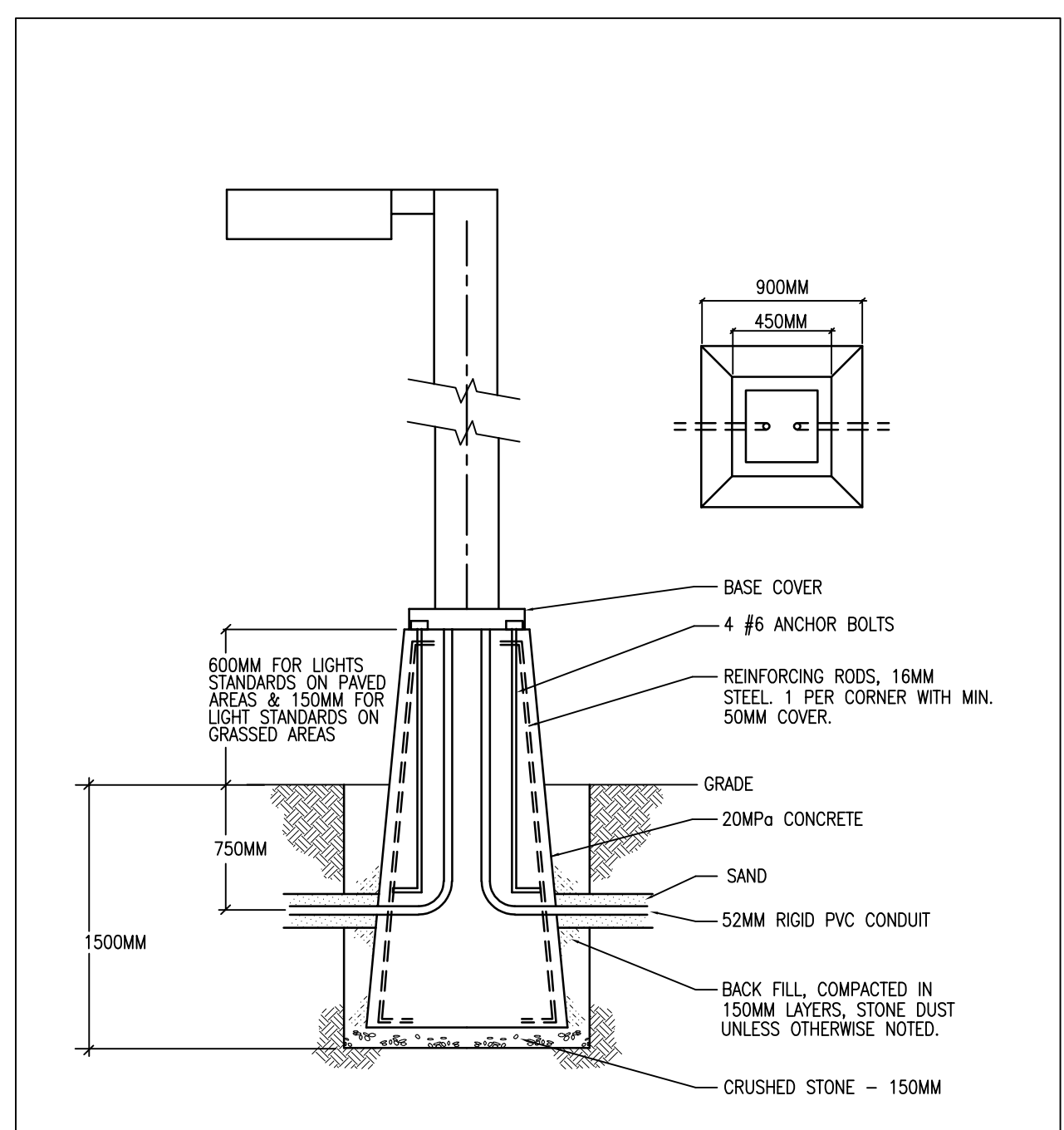
THE ENGINEER WAIVES ANY AND ALL RESPONSIBILITY AND LIABILITY FOR PROBLEMS THAT ARISE FROM FAILURE TO FOLLOW THESE PLANS, SPECIFICATIONS AND THE DESIGN INTENT THEY CONVEY, OR FOR PROBLEMS WHICH ARISE FROM OTHER FAILURE TO OBTAIN AND / OR FOLLOW ENGINEER'S GUIDANCE WITH RESPECT TO ANY ERRORS, OMISSIONS, INCONSISTENCIES, AMBIGUITIES OR CONFLICTS WHICH ARE ALLEGED.

THIS DRAWING IS THE PROPERTY OF ALFA+ PROJECT LEADERS INC. AND ALL COPYRIGHTS ARE RESERVED. NO USE OF THIS DRAWING MAY BE MADE WITHOUT EXPRESS WRITTEN CONSENT.

DO NOT SCALE DRAWINGS.



1 SITE LIGHTING
E-010C 1:400



TYPE	DESCRIPTION	LAMPS						DIMMING OPTION	VOLT	MOUNTING	REMARKS
		QTY	TYPE	WATTS	COLOUR	LUMENS	LUMENS/WATT (L/W)				
AA	LED SITE LIGHT FIXTURE - RATIO HUBBELL RAR1 SERIES NO SUBSTITUTION	1	LED	25.4W	4000K	3467 LM	136		347	POLE MOUNTED AT 18 FEET	- TYPE III DISTRIBUTION - BACKLIGHT CONTROL - FULL CUT-OFF
AB	LED SITE LIGHT FIXTURE - RATIO HUBBELL RAR1 SERIES NO SUBSTITUTION	1	LED	25.4W	4000K	3467 LM	136		347	POLE MOUNTED AT 18 FEET	- TYPE III DISTRIBUTION - FULL CUT-OFF
AC	LED SITE LIGHT FIXTURE - RATIO HUBBELL RAR1 SERIES NO SUBSTITUTION	1	LED	25.4W	4000K	3467 LM	136		347	POLE MOUNTED AT 18 FEET	- TYPE III DISTRIBUTION - BACK TO BACK (2 HEADS) - BACKLIGHT CONTROL - FULL CUT-OFF
AF	LED SITE LIGHT FIXTURE - RATIO HUBBELL RAR1 SERIES NO SUBSTITUTION	1	LED	25.4W	4000K	3412 LM	134		347	POLE MOUNTED AT 18 FEET	- TYPE IV DISTRIBUTION - BACK TO BACK (2 HEADS) - FULL CUT-OFF
AG	LED SITE LIGHT FIXTURE - RATIO HUBBELL RAR1 SERIES NO SUBSTITUTION	1	LED	25.4W	4000K	3412 LM	134		347	POLE MOUNTED AT 18 FEET	- TYPE IV DISTRIBUTION - BACKLIGHT CONTROL - FULL CUT-OFF
AH	LED SITE LIGHT FIXTURE - HUBBELL RATIO RAR1 SERIES NO SUBSTITUTION	1	LED	39W	4000K	5308 LM	140		347	POLE MOUNTED AT 18 FEET	- TYPE III DISTRIBUTION - BACKLIGHT CONTROL - FULL CUT-OFF
BA	LED WALLPACK LIGHT FIXTURE - HUBBELL RATIO WALL RWL1 SERIES NO SUBSTITUTION	1	LED	10.1W	4000K	1355 LM	134		347	WALL MOUNTED AT 12 FEET	- TYPE III DISTRIBUTION - FULL CUT-OFF
BB	LED WALLPACK LIGHT FIXTURE - HUBBELL RATIO WALL RWL1 SERIES NO SUBSTITUTION	1	LED	10.1W	4000K	1336 LM	132		347	WALL MOUNTED AT 12 FEET	- TYPE IV DISTRIBUTION - FULL CUT-OFF
BC	LED WALLPACK LIGHT FIXTURE - HUBBELL RATIO WALL RWL1 SERIES NO SUBSTITUTION	1	LED	14.5W	4000K	1962 LM	135		347	WALL MOUNTED AT 12 FEET	- TYPE III DISTRIBUTION - FULL CUT-OFF
BF	LED WALLPACK LIGHT FIXTURE - HUBBELL RATIO WALL RWL1 SERIES NO SUBSTITUTION	1	LED	19.9W	4000K	2672 LM	134		347	WALL MOUNTED AT 12 FEET	- TYPE IV DISTRIBUTION - FULL CUT-OFF
BG	LED WALLPACK LIGHT FIXTURE - HUBBELL RATIO WALL RWL1 SERIES NO SUBSTITUTION	1	LED	28W	4000K	3680 LM	131		347	WALL MOUNTED AT 12 FEET	- TYPE IV DISTRIBUTION - FULL CUT-OFF

2.	ISSUED FOR SITE PLAN APPLICATION	AUG 23/21
1.	ISSUED FOR REVIEW	JUL 21/21
REV:	DESCRIPTION:	DATE:

ALFA+
PROJECT LEADERS
MECHANICAL AND ELECTRICAL ENGINEERS
OTTAWA, ONTARIO
WWW.ALFAPLUS.CA
(613) 890-1134
HELLO@ALFAPLUS.CA

STAMP: PROFESSIONAL ENGINEER
A. SALAH
100072517
Aug 23/21
PROVINCE OF ONTARIO

PROJECT:
UPPER HUNT CLUB CENTRE
2600 BANK STREET
OTTAWA, ONTARIO

DRAWING:
ELECTRICAL:
SITE PLAN LIGHTING - NEW

DATE: MAY 2021	DRAWN: F.S.	DESIGNED: F.S./A.S.	CHECKED: A.S.
SCALE: AS SHOWN	PROJECT NO: 21008	DRAWING NO: E-010C	OF 3

2 MOUNTING DETAIL FOR LAMP POST
E-010C N.T.S.