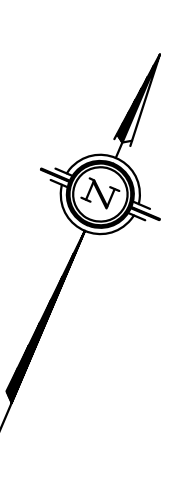
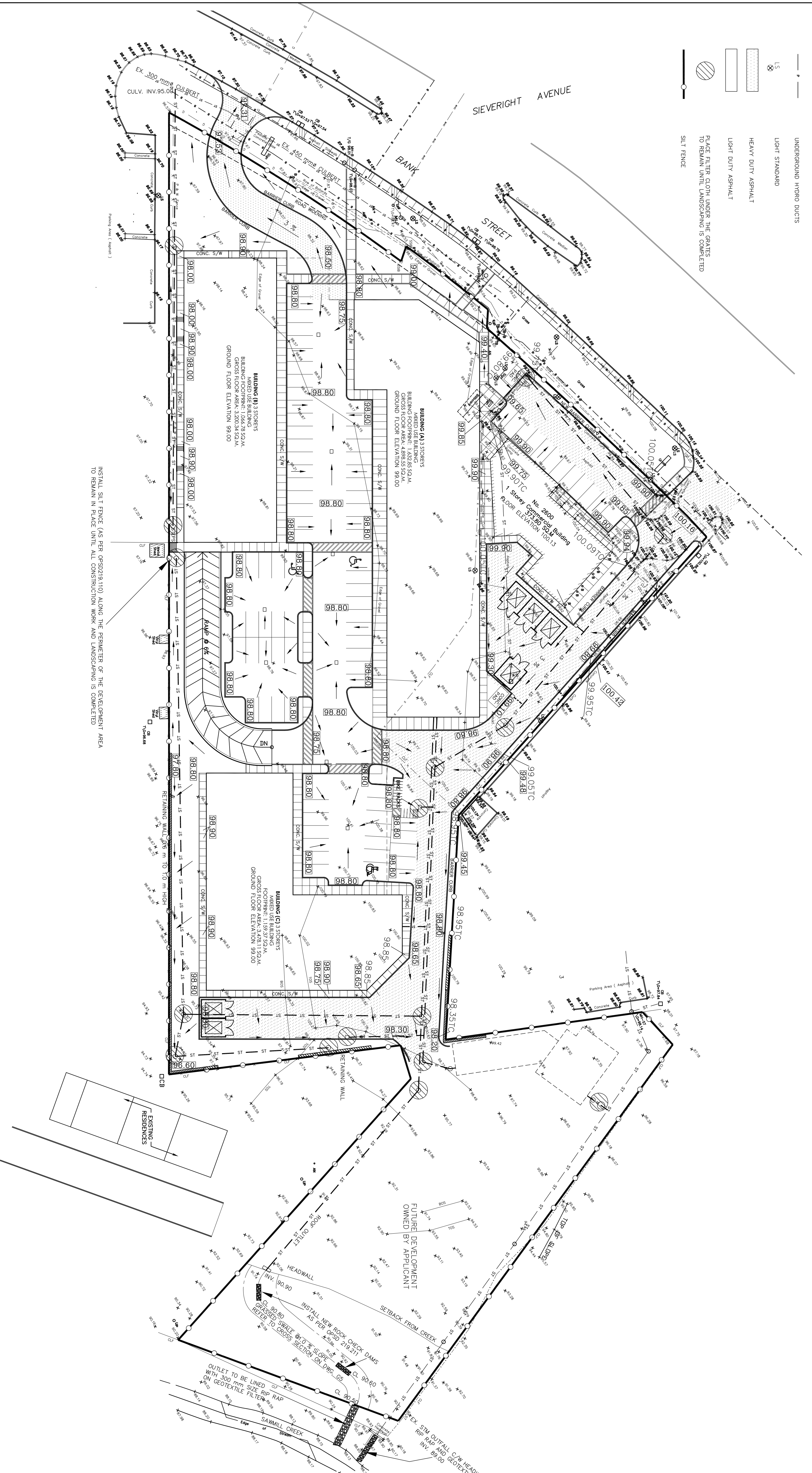


LEGEND

- 99.90 99.40 PROPOSED ELEVATION
- 98.70TC EXISTING ELEVATION
- 98.70TC TOP OF CURB
- > DIRECTION OF FLOW
- UTILITY POLE
- DC DEPRESSURE CURB
- ST STORM SEWER
- SANITARY SEWER
- WATER LINE
- PROPERTY LINE
- BELL CABLE
- GAS MAIN
- OVERHEAD UTILITIES
- UNDERGROUND HOLLOW DUCTS
- LIGHT STANDARD
- LIGHT DUTY ASPHALT
- HEAVY DUTY ASPHALT
- PLACE FILTER CLOTH UNDER THE GRATES TO REMAIN UNTIL LANDSCAPING IS COMPLETED
- SILT FENCE



JOB ENCLOSURE
FILE # 24046
REVISED 10/21/21



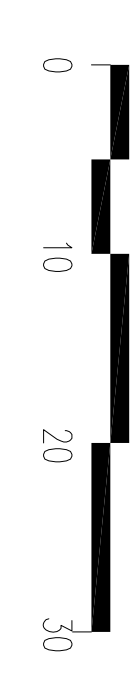
INSTALL SILT FENCE (AS PER OPSD219.110) ALONG THE PERIMETER OF THE DEVELOPMENT AREA TO REMAIN IN PLACE UNTIL ALL CONSTRUCTION WORK AND LANDSCAPING IS COMPLETED

EROSION AND SEDIMENT CONTROL

- THE CONTRACTOR SHALL IMPLEMENT BEST MANAGEMENT PRACTICES TO PROVIDE FOR THE PROTECTION OF THE AREA DRAINAGE SYSTEM AND THE RECEIVING WATER COURSE.
- DURING CONSTRUCTION ACTIVITIES, THIS INCLUDES LIMITING THE AMOUNT OF EXPOSED SOIL, USING FILTER CLOTH UNDER THE GRATES OF CATCHBASINS AND MANHOLES AND INSTALLING SEDIMENT AND EROSION CONTROL MEASURES TO CONFORM TO ANY GUIDELINE B-6 "STANDARDS FOR EVALUATING CONSTRUCTION ACTIVITIES IMPACTING ON WATER RESOURCES", OR LOCAL STANDARDS AND CODES WHICHEVER IS MORE STRINGENT.
- THE MEASURES SHALL MEET THE FOLLOWING OBJECTIVES:
 - PREVENT LOSS OF SOIL DURING CONSTRUCTION BY STORM WINDOFF AND/OR WIND EROSION,
 - INCLUDING PROTECTING TOPSOIL BY STOCKPILING FOR REUSE
 - PREVENT SEDIMENTATION OF STORM SEWERS OR RECEIVING STREAMS
 - PREVENT POLLUTING THE AIR WITH DUST AND PARTICULATE MATTER

NOTES

- DO NOT SCALE DRAWING
- VERIFY LOCATIONS AND ELEVATIONS OF EXISTING SERVICES PRIOR TO CONSTRUCTION. CONTRACTOR IS RESPONSIBLE TO OBTAIN LOCATES
- CONTRACTOR IS TO COMPLY WITH THE CITY OF OTTAWA REQUIREMENTS FOR TRAFFIC CONTROL WHEN WORKING ON MUNICIPAL ROAD.
- ALL WORK AND MATERIALS SHALL BE IN ACCORDANCE WITH CITY OF OTTAWA STANDARDS AND SPECIFICATIONS
- CONTRACTOR IS RESPONSIBLE TO OBTAIN ALL NECESSARY PERMITS PRIOR TO CONSTRUCTION
- RESTORE PAYMENTS TO THEIR ORIGINAL CONDITIONS ON EXISTING ROADS TO CURBS AND SURFACES
- FINISH THE BRUSHES, CURBS OR EXISTING SERVICES WITHIN THE SPECIFIED DIMENSIONS AND LAYOUT INFORMATION SHALL BE CONFIRMED PRIOR TO COMMENCEMENT OF CONSTRUCTION
- REFER TO ARCHITECT'S PLANS FOR ALL DIMENSIONS AND LAYOUT INFORMATION



TOPOGRAPHIC PLAN OF SURVEY OF
**PART OF LOT 7
 CONCESSION 4 (RIDEAU FRONT)**
 Geographic Township of Gloucester
 and
**PART OF LOT 19
 REGISTERED PLAN 141
 CITY OF OTTAWA**
 Surveyed by Amnis, O'Sullivan, Vollebek Ltd.

**Capital Engineering
 Group Ltd**
 Municipal / Land Development
 110 Dosselleur Way
 Ottawa, Ontario K1G 4S5
 T: (613)739-0776 F: (613)735-7302
 E: ce@rogers.com

| NO. | ISSUE & REVISIONS | DATE |
|-----|----------------------------------|------------|
| 1 | Issued for Site Plan Application | 2021/08/25 |

SEAL

PROJECT NORTH

TRUE NORTH

Not for construction unless SEALED and SIGNED

PROJECT
UPPER HUNT CLUB CENTRE
 2600 BANK STREET
 Ottawa, Ontario
**Erosion & Sediment
 Control Plan**

PROJECT NO. PV2-2020
 SCALE - 1 : 400
 DRAWN - ANDREW
 CHECKED - AN
 DRAWING NO. **G4**
 REVISION NO.

GENERAL NOTE:
 THE POSITION OF ALL POLE LINES, CONDUITS, SEWERS AND OTHER UNDERGROUND AND OVERGROUND UTILITIES AND STRUCTURES IS NOT NECESSARILY SHOWN ON THESE DRAWINGS, AND WHERE SHOWN, THE ACCURACY OF THE POSITIONING IS NOT GUARANTEED. THE CONTRACTOR SHALL VERIFY THE EXACT LOCATION OF ALL SUCH UTILITIES AND STRUCTURES AND ASSUME ALL LIABILITY FOR DAMAGE TO THEM.