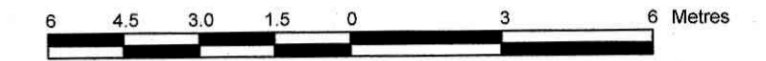


PART OF LOTS 23 AND 24
South Wilbrod Street
REGISTERED PLAN 6
CITY OF OTTAWA

Surveyed by Annis, O'Sullivan, Vollebakk Ltd.

Scale 1 : 150



Metric
DISTANCES SHOWN ON THIS PLAN ARE IN METRES AND
CAN BE CONVERTED TO FEET BY DIVIDING BY 0.3048

Surveyor's Certificate

- I CERTIFY THAT:
- This survey and plan are correct and in accordance with the Surveys Act, the Surveyors Act and the regulations made under them.
 - The survey was completed on the 19th day of February, 2020.

Mar 9/20
Date

T. Hartwick
Ontario Land Surveyor

Notes & Legend

Denotes	
□	Survey Monument Planted
■	Survey Monument Found
SIB	Standard Iron Bar
SSIB	Short Standard Iron Bar
IB	Iron Bar
CC	Cut Cross
CP	Concrete Pin
(WIT)	Witness
Meas.	Measured
Acc.	Accepted
(AOG)	Annis, O'Sullivan, Vollebakk Ltd.
(P1)	(AOG) Plan, September 28th, 2006
(P2)	(1287) Plan, July 23rd, 2002
(P3)	(1319) Plan, December 14th, 1989
(P4)	Stantec Plan, July 31st, 2012
○ MH-ST	Maintenance Hole (Storm Sewer)
○ MH-S	Maintenance Hole (Sanitary)
⊕ VC	Valve Chamber (Watermain)
○ UP	Utility Pole
○ CB	Catch Basin
⊕ FH	Fire Hydrant
⊕ WV	Water Valve
T/G	Top of Grate
○	Deciduous Tree
△ S	Sign
CLF	Chain Link Fence
BF	Board Fence
+ 65.00	Location of Elevations
+ 65.00	Top of Concrete Curb Elevation
C/L	Centreline
∅	Diameter
— OHW	Over Head Wire
Conc.	Concrete
CH	Cedar Hedge

ELEVATION NOTES

- Elevations shown are geodetic and are referred to the CGVD28 geodetic datum.
- It is the responsibility of the user of this information to verify that the job benchmark has not been altered or disturbed and that its relative elevation and description agrees with the information shown on this drawing.

UTILITY NOTES

- This drawing cannot be accepted as acknowledging all of the utilities and it will be the responsibility of the user to contact the respective utility authorities for confirmation.
- Only visible surface utilities were located.
- A field location of underground plant by the pertinent utility authority is mandatory before any work involving breaking ground, probing, excavating etc.

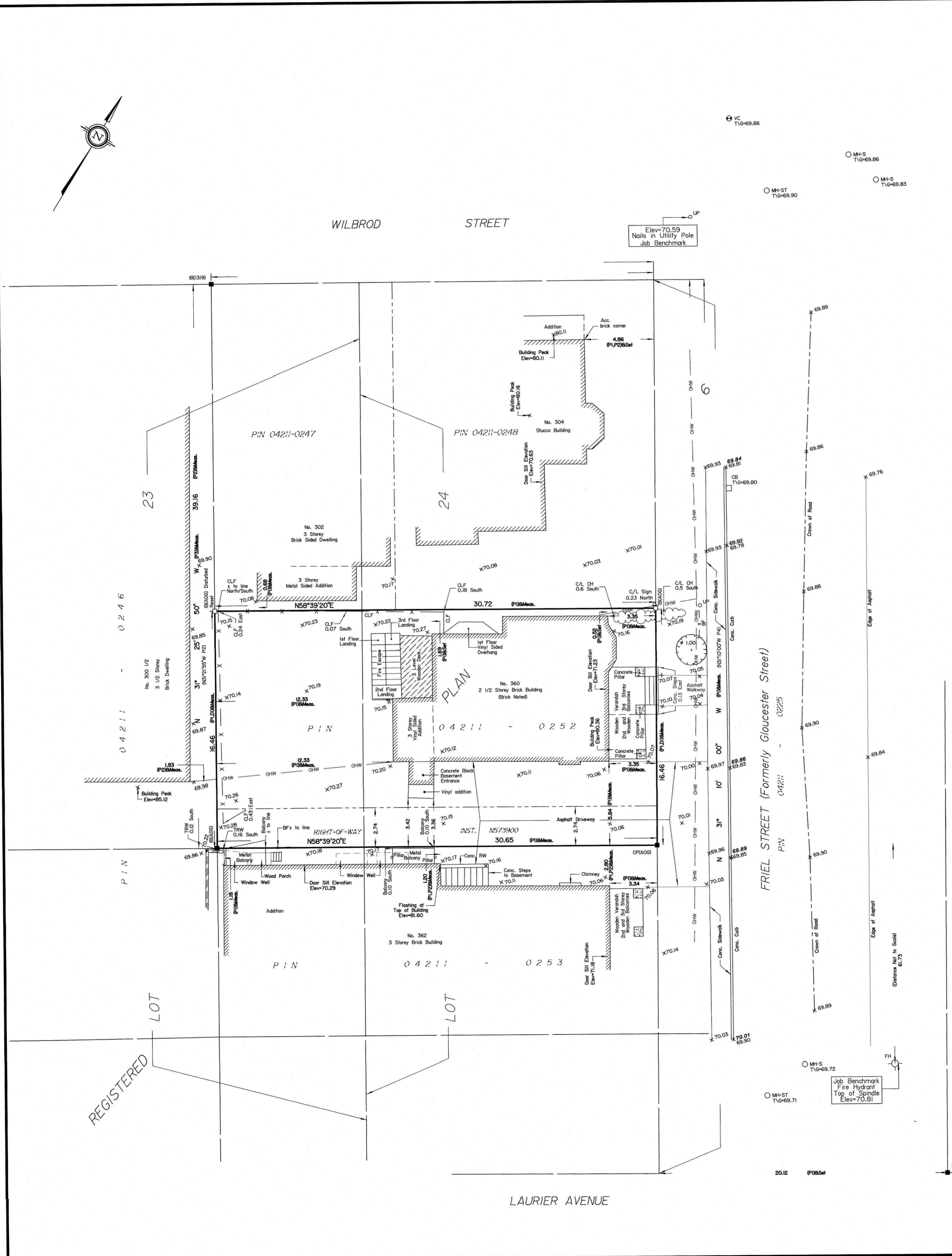
For bearing comparisons, a rotation of 0°01'30" counter-clockwise was applied to bearings on plan (P1), (P2), (P3), (P4) and (D1).

Topographic data was collected under Winter Conditions. Snow cover and ice preclude determining location and elevation of some topographical data that is otherwise visible.

ASSOCIATION OF ONTARIO
LAND SURVEYORS
PLAN SUBMISSION FORM
2121739



THIS PLAN IS NOT VALID UNLESS
IT IS AN EMBOSSED ORIGINAL
COPY ISSUED BY THE SURVEYOR
IN ACCORDANCE WITH
Regulation 1026, Section 29 (3)



LOT 6
REGISTERED
PLAN 8

© Annis, O'Sullivan, Vollebakk Ltd. 2020. THIS PLAN IS PROTECTED BY COPYRIGHT

ANNIS, O'SULLIVAN, VOLLEBEKK LTD.
14 Concourse Gate, Suite 500
Nepean, Ont. K2E 7S6
Phone: (613) 727-0850 / Fax: (613) 727-1079
Email: Nepean@aovltd.com

Ontario
Land Surveyors

Job No. 20095-19 Binte P.L.L.s 23&24 RP6 TOPO D2