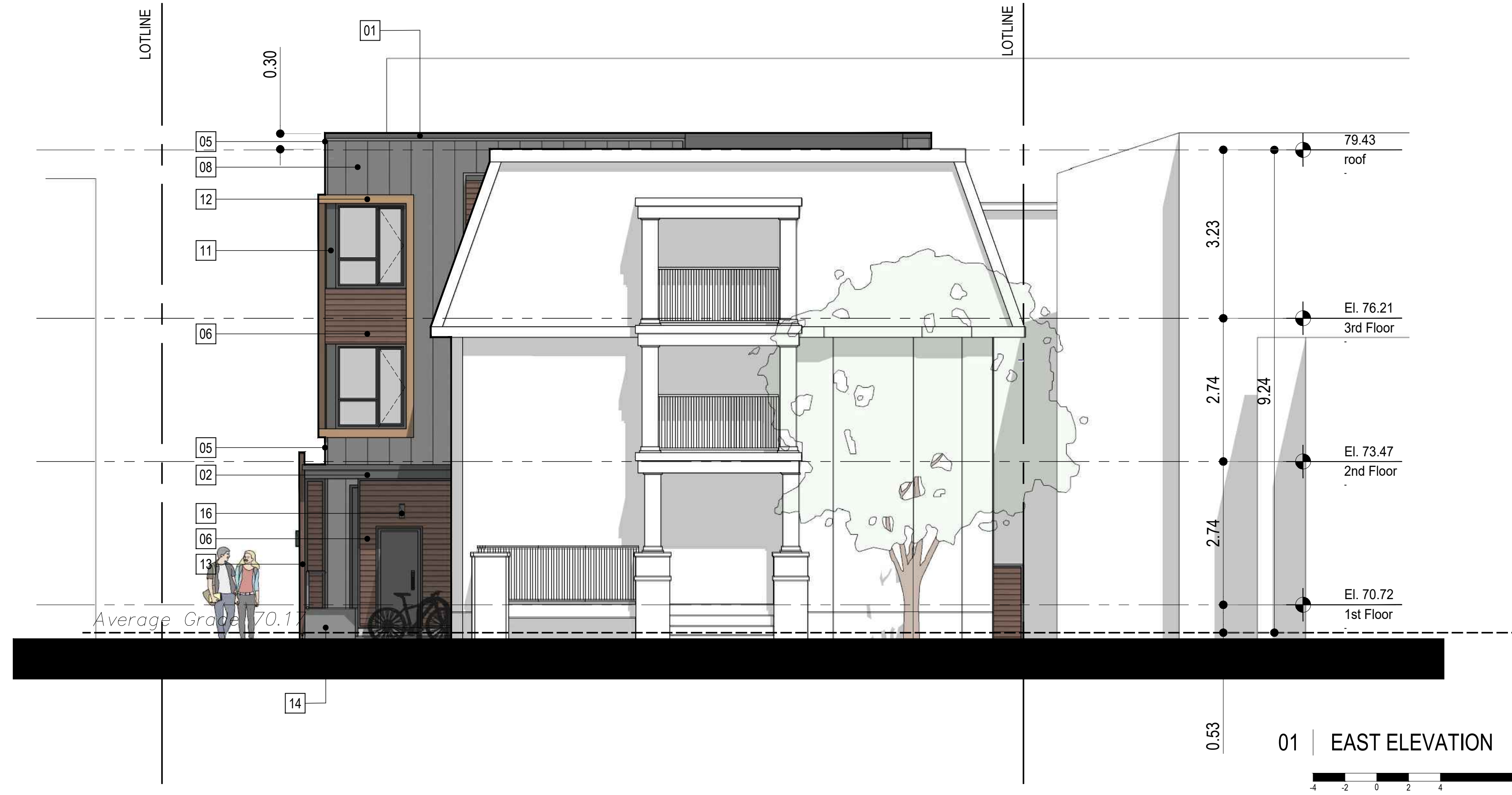


PRODUCTS / MATERIALS:

- 01 PRE-FINISHED METAL PARAPET CAP
COLOUR: CHARCOAL
- 02 PRE-FINISHED METAL FASCIA AND
4" V GROOVE METAL SOFFIT
FASCIA COLOUR: CHARCOAL
SOFFIT COLOUR: CEDAR (LUX Architectural Products)
- 03 ARCHITECTURAL METAL PANELS (OVM)
COLOUR: CHARCOAL
- 04 ARCHITECTURAL METAL PANELS (OVM)
COLOUR: COPPER
- 05 SIDING TRIM
COLOUR: CHARCOAL
- 06 4" V GROOVE METAL SIDING
COLOUR: CEDAR (LUX Architectural Products)
TRIM COLOUR: CHARCOAL
- 07 POURED CONCRETE STEPS
- 08 METAL SIDING (OVM)
COLOUR: REGEND GREY
- 09 ALUMINUM RAIL
- 10 CEMENT PAVING TO A MINIMUM
OF 8" BELOW GRADE
- 11 METAL CAP TRIM
COLOUR: CHARCOAL
- 12 METAL CAP TRIM
COLOUR: COPPER
- 13 6X6 GLULAM POST - STAINED
- 14 POURED CONCRETE RAMP
- 15 NORTWOOD COMPOSITE LOUVER PRIVACY SCREEN
COLOUR: DEEP GREY
- 16 EXTERIOR LIGHT FIXTURE

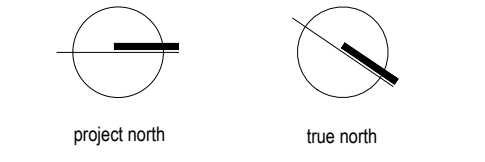


Andrew McCreight
ANDREW MCCREIGHT
MANAGER (A), DEVELOPMENT REVIEW CENTRAL
PLANNING, REAL ESTATE & ECONOMIC DEVELOPMENT
DEPARTMENT, CITY OF OTTAWA

APPROVED
By Andrew McCreight at 4:03 pm, Nov 10, 2022



All drawings and related documents are the copyright of Muzaiko Architecture and must be returned upon request. Reproduction of drawings and related documents in part or whole is unlawful and forbidden without the written permission of Muzaiko Architecture.



G		
F		
E		
D		
C	RE-ISSUED FOR SPA	2022.06.27
B	RE-ISSUED FOR SPA	2022.04.13
A	FOR SITE PLAN APPLICATION	2022.02.17
issue	description	date

**360 Friel Street
Proposed Addition**

drawing title

ELEVATIONS

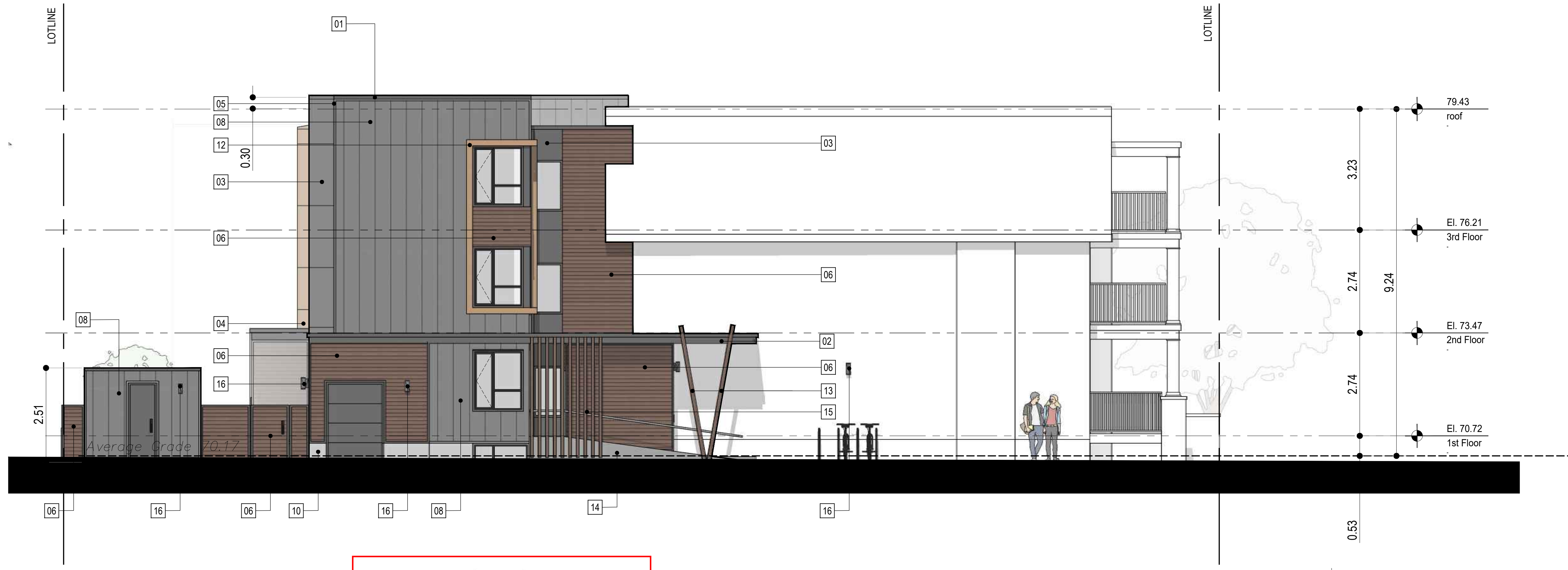
drawn by	P.A.
scale	3/16"=1'-0"
date	2021.05.12
project number	
drawing number	

A2.1 rev C



ANSI D 22 x 34

- PRODUCTS / MATERIALS:**
- 01 PRE-FINISHED METAL PARAPET CAP
COLOUR: CHARCOAL
 - 02 PRE-FINISHED METAL FASCIA AND
4" V GROOVE METAL SOFFIT
FASCIA COLOUR: CHARCOAL
SOFFIT COLOUR: CEDAR (LUX Architectural Products)
 - 03 ARCHITECTURAL METAL PANELS (OVM)
COLOUR: CHARCOAL
 - 04 ARCHITECTURAL METAL PANELS (OVM)
COLOUR: COPPER
 - 05 SIDING TRIM
COLOUR: CHARCOAL
 - 06 4" V GROOVE METAL SIDING
COLOUR: CEDAR (LUX Architectural Products)
TRIM COLOUR: CHARCOAL
 - 07 POURED CONCRETE STEPS
 - 08 METAL SIDING (OVM)
COLOUR: REGEND GREY
 - 09 ALUMINUM RAIL
 - 10 CEMENT PAVING TO A MINIMUM
OF 8" BELOW GRADE
 - 11 METAL CAP TRIM
COLOUR: CHARCOAL
 - 12 METAL CAP TRIM
COLOUR: COPPER
 - 13 6X6 GLULAM POST - STAINED
 - 14 POURED CONCRETE RAMP
 - 15 NORTWOOD COMPOSITE LOUVER PRIVACY SCREEN
COLOUR: DEEP GREY
 - 16 EXTERIOR LIGHT FIXTURE

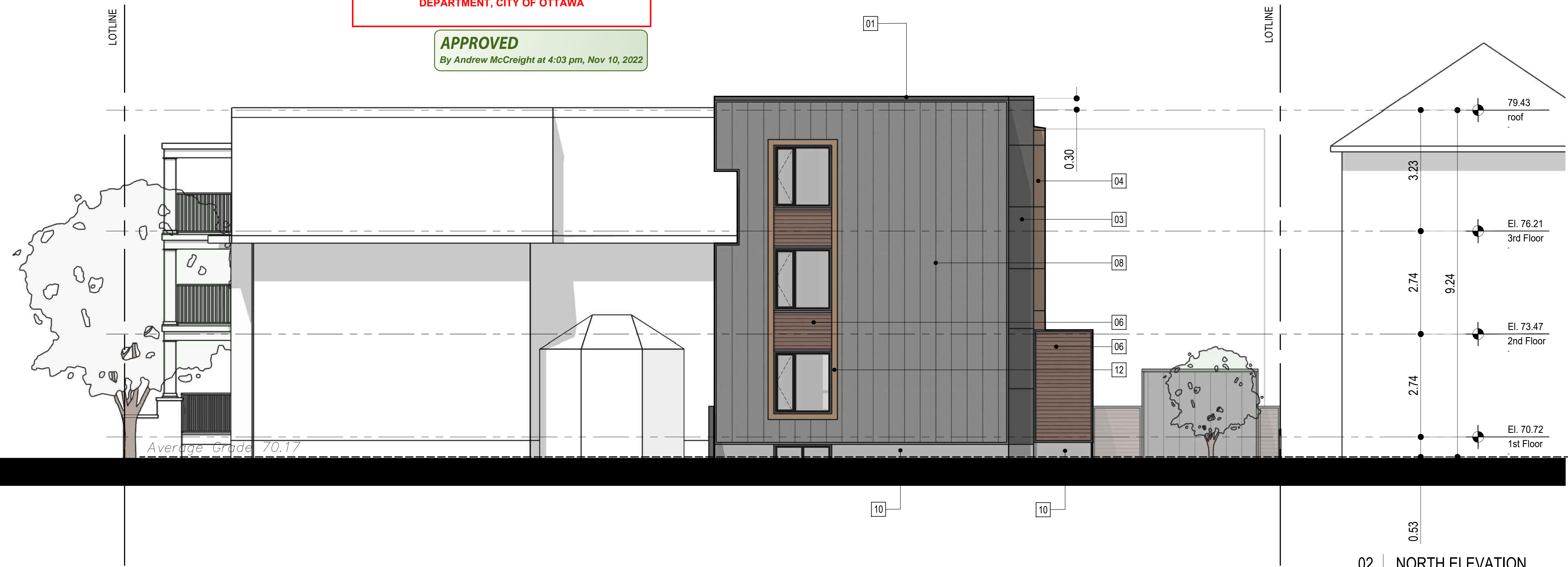


01 | SOUTH ELEVATION

A. McCreight

ANDREW MCCREIGHT
MANAGER (A), DEVELOPMENT REVIEW CENTRAL
PLANNING, REAL ESTATE & ECONOMIC DEVELOPMENT
DEPARTMENT, CITY OF OTTAWA

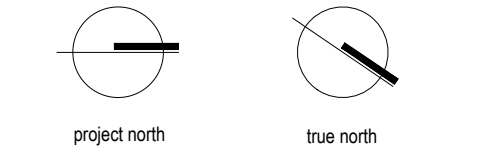
APPROVED
By Andrew McCreight at 4:03 pm, Nov 10, 2022



02 | NORTH ELEVATION



All drawings and related documents are the copyright of Muzaiko Architecture and must be returned upon request. Reproduction of drawings and related documents in part or whole is unlawful and forbidden without the written permission of Muzaiko Architecture.



G		
F		
E		
D		
C	RE-ISSUED FOR SPA	2022.06.27
B	RE-ISSUED FOR SPA	2022.04.13
A	FOR SITE PLAN APPLICATION	2022.02.17
issue	description	date

**360 Friel Street
Proposed Addition**

drawing title

ELEVATIONS

drawn by	P.A.
scale	3/16"=1'-0"
date	2021.05.12
project number	
drawing number	

A2.2 rev C