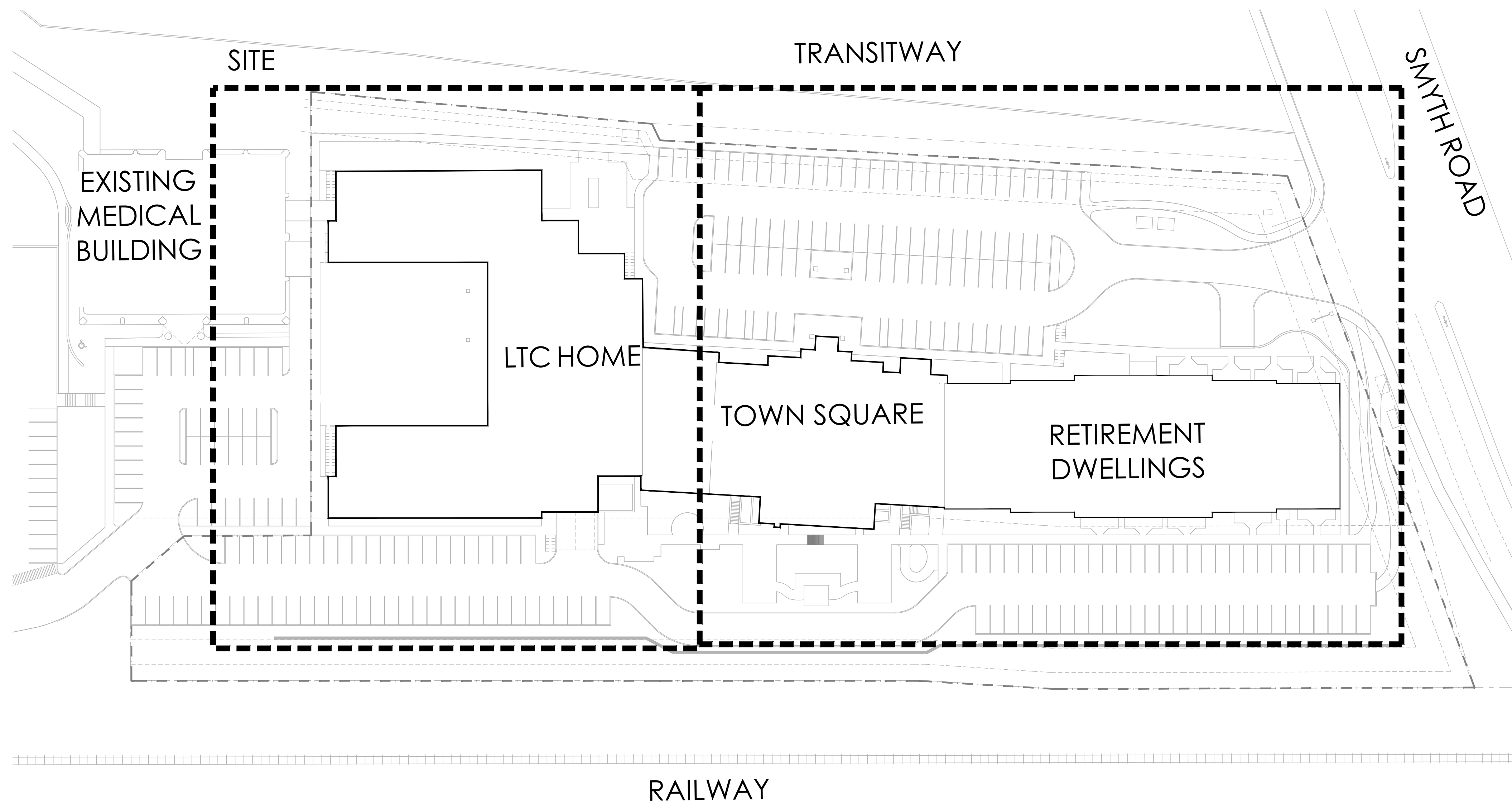


SCHLEGEL VILLAGES CENTRE



NAK PROJECT NO. 21-193

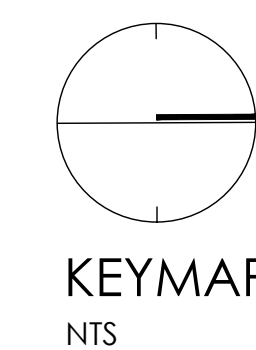
PROJECT ADDRESS:
OTTAWA, ON

ISSUED FOR CLIENT REVIEW
OCTOBER, 2021

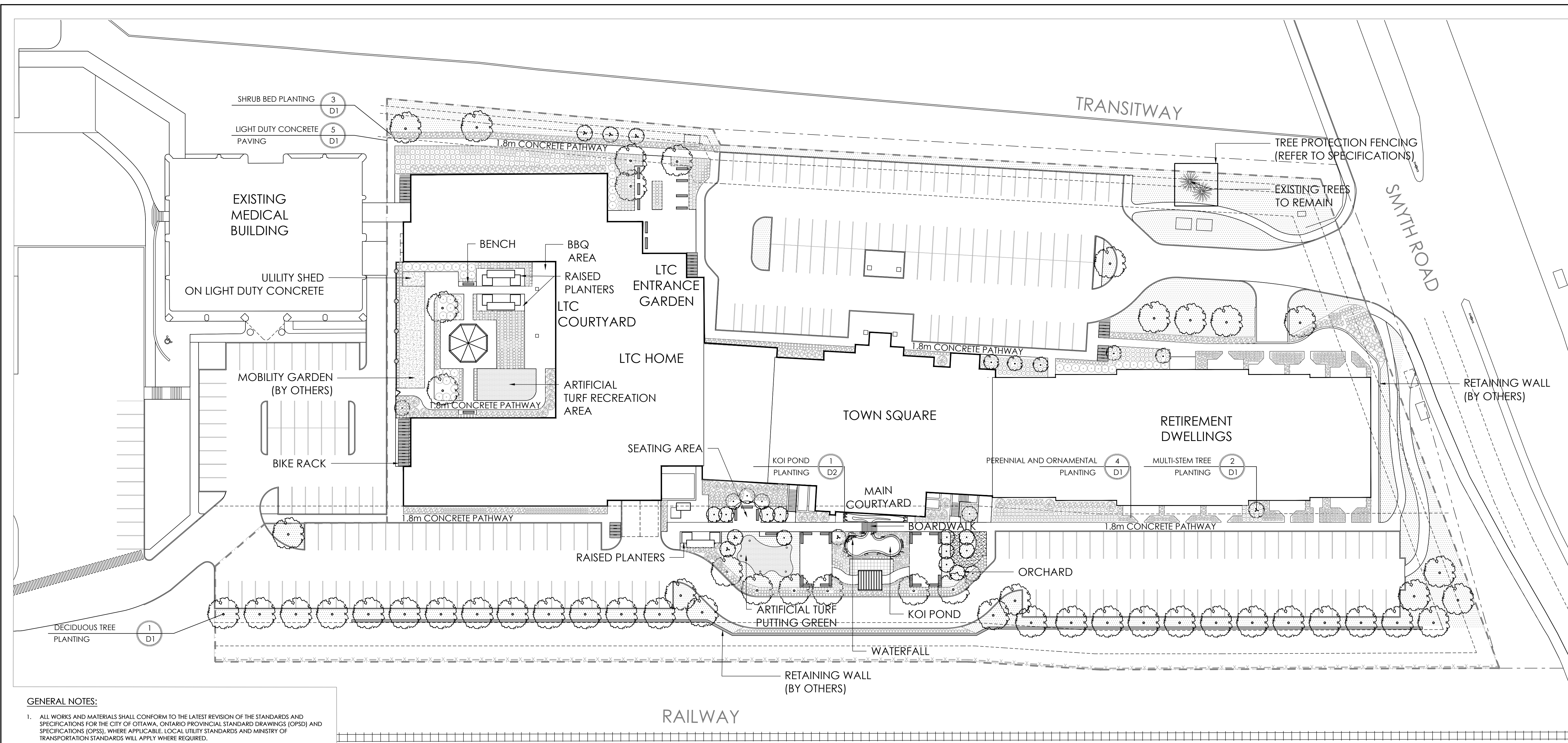
LIST OF DRAWINGS:

- | | | |
|-----|---|----------------|
| NAK | - | |
| L01 | - | LANDSCAPE PLAN |
| L02 | - | LANDSCAPE PLAN |
| L03 | - | LANDSCAPE PLAN |

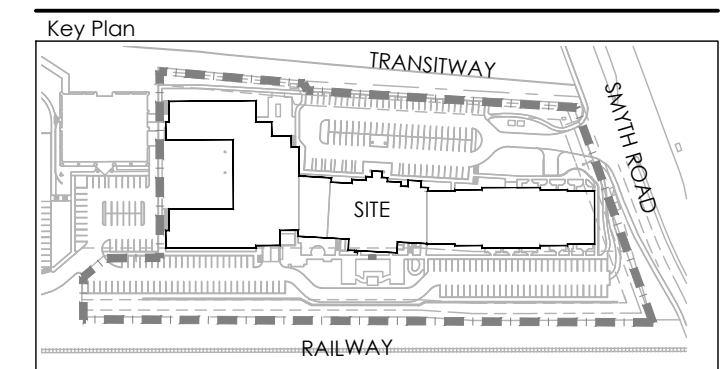
- | | | |
|---------|---|---------|
| DETAILS | - | |
| D01 | - | DETAILS |
| D02 | - | DETAILS |



KEYMAP
NTS



Contractor shall check all dimensions on the work and report any discrepancy to the Landscape Architect before proceeding. All drawings and specifications are the property of the Landscape Architect and must be returned at the completion of the work. This drawing is not to be used for construction until signed by the Landscape Architect.



LEGEND

PROPERTY LINE

FENCING

2.0m HT. METAL FENCE

PLANTING

EXISTING DECIDUOUS TREE

EXISTING CONIFEROUS TREE

LARGE DECIDUOUS TREE

SMALL DECIDUOUS TREE

SOD

ARTIFICIAL TURF

STONEDUST PAVING

CONIFEROUS SHRUB

DECIDUOUS SHRUB

GRASSES / PERENNIALS

SURFACING

C.I.P. CONCRETE

CONCRETE PATH

PLANTING KEY

TREE SPECIES QUANTITY

SHRUB SPECIES QUANTITY

AMENITIES

BENCH

RAISED PLANTERS

BIKE RACK

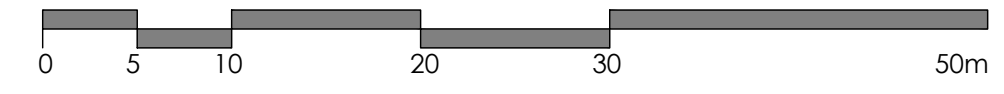
ARMOUR STONE BOULDER

SHADE STRUCTURE

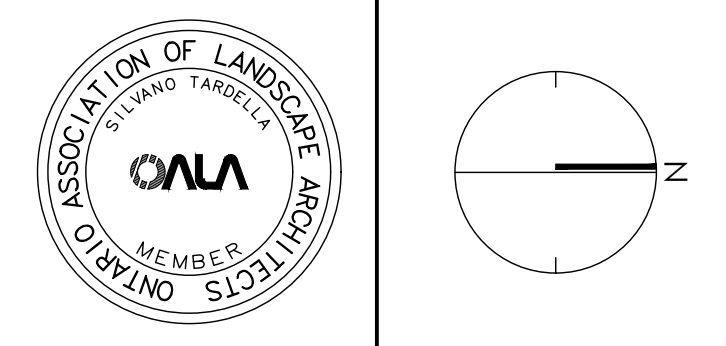
GAZEBO

- GENERAL NOTES:**
- ALL WORKS AND MATERIALS SHALL CONFORM TO THE LATEST REVISION OF THE STANDARDS AND SPECIFICATIONS FOR THE CITY OF OTTAWA, ONTARIO PROVINCIAL STANDARD DRAWINGS (OPSD) AND SPECIFICATIONS (OPS), WHERE APPLICABLE. LOCAL UTILITY STANDARDS AND MINISTRY OF TRANSPORTATION STANDARDS WILL APPLY WHERE REQUIRED.
 - THE CONTRACTOR SHALL CONFIRM THE LOCATION OF ALL EXISTING UTILITIES WITHIN THE SITE AND ADJACENT WORK AREAS. THE CONTRACTOR SHALL BE RESPONSIBLE FOR PROTECTING ALL EXISTING UTILITIES TO THE SATISFACTION OF THE AUTHORITY HAVING JURISDICTION. THE CONTRACTOR SHALL BE RESPONSIBLE FOR THE REPAIR OR REPLACEMENT OF ANY SERVICES OR UTILITIES DISTURBED DURING CONSTRUCTION, TO THE SATISFACTION OF THE AUTHORITY HAVING JURISDICTION.
 - ALL DIMENSIONS SHALL BE CHECKED AND VERIFIED IN THE FIELD BY THE CONTRACTOR PRIOR TO THE START OF CONSTRUCTION. ANY DISCREPANCIES SHALL BE REPORTED IMMEDIATELY TO THE ENGINEER. LOST TIME DUE TO FAILURE OF THE CONTRACTOR TO CONFIRM UTILITY LOCATIONS AND NOTIFY ENGINEER OF POSSIBLE CONFLICTS PRIOR TO CONSTRUCTION WILL BE AT THE CONTRACTOR'S EXPENSE.
 - ANY AREAS BEYOND THE LIMIT OF THE SITE DISTURBED DURING CONSTRUCTION SHALL BE RESTORED TO ORIGINAL CONDITION OR BETTER TO THE SATISFACTION OF THE AUTHORITY HAVING JURISDICTION AT THE CONTRACTOR'S EXPENSE.
 - ALL WORK SHALL BE COMPLETED IN ACCORDANCE WITH THE 'OCCUPATIONAL HEALTH AND SAFETY ACT AND REGULATIONS FOR CONSTRUCTION PROJECTS'. THE GENERAL CONTRACTOR SHALL BE DEEMED TO BE THE 'CONSTRUCTOR' AS DEFINED IN THE ACT.
 - ALL CONSTRUCTION SIGNAGE MUST CONFORM TO THE MINISTRY OF TRANSPORTATION OF ONTARIO MANUAL OF UNIFORM TRAFFIC CONTROL DEVICES PER LATEST AMENDMENT.
 - THE CONTRACTOR IS ADVISED THAT WORKS BY OTHERS MAY BE ONGOING DURING THE PERIOD OF THIS CONTRACT. THE CONTRACTOR SHALL COORDINATE CONSTRUCTION ACTIVITIES TO PREVENT CONFLICTS.
 - ALL DIMENSIONS ARE IN METRES UNLESS SPECIFIED OTHERWISE.
 - THERE WILL BE NO SUBSTITUTION OF MATERIALS UNLESS PRIOR WRITTEN APPROVAL IS RECEIVED FROM THE ENGINEER.
 - ALL CONSTRUCTION SHALL BE CARRIED OUT IN ACCORDANCE WITH THE RECOMMENDATIONS MADE IN THE GEOTECHNICAL REPORT.
 - ALL SEWERS CONSTRUCTED WITH GRADES LESS THAN 1.0% SHALL BE INSTALLED USING LASER ALIGNMENT AND CHECKED WITH LEVEL INSTRUMENT PRIOR TO BACKFILLING.
 - THE CONTRACTOR IS RESPONSIBLE FOR OBTAINING ALL PERMITS REQUIRED AND TO BEAR THE COST OF THE SAME.
 - THE CONTRACTOR WILL BE RESPONSIBLE FOR ADDITIONAL BEDDING, OR ADDITIONAL STRENGTH PIPE IF THE MAXIMUM TRENCH WIDTH AS SPECIFIED BY OPSD IS EXCEEDED.
 - ALL PIPE / CULVERT SECTION SIZES REFER TO INSIDE DIMENSIONS.
 - SHOULD DEEPLY BURIED ARCHAEOLOGICAL REMAINS BE FOUND ON THE PROPERTY DURING CONSTRUCTION ACTIVITIES, THE HERITAGE OPERATIONS UNIT OF THE ONTARIO MINISTRY OF CULTURE MUST BE NOTIFIED IMMEDIATELY.
 - ALL NECESSARY CLEARING AND GRUBBING SHALL BE COMPLETED BY THE CONTRACTOR. REVIEW WITH CONTRACT ADMINISTRATOR AND THE CITY OF OTTAWA PRIOR TO ANY TREE CUTTING / REMOVAL.
 - DRAWINGS SHALL BE READ IN CONJUNCTION WITH THE SITE PLAN.
 - THE CONTRACTOR SHALL PROVIDE THE PROJECT ENGINEER ONE SET OF AS CONSTRUCTED SITE SERVICING AND GRADING DRAWINGS.
 - BENCHMARKS: IT IS THE RESPONSIBILITY OF THE CONTRACTOR TO VERIFY THAT THE SITE BENCHMARK(S) HAS NOT BEEN ALTERED OR DISTURBED AND THAT ITS RELATIVE ELEVATION AND DESCRIPTION AGREES WITH THE INFORMATION DEPICTED ON THIS PLAN.

- PLANTING NOTES:**
- CONTRACTOR TO VERIFY LOCATION OF ALL SERVICES PRIOR TO ANY EXCAVATION.
 - LOCATIONS OF ALL PLANT MATERIALS TO BE STAKED BY THE CONTRACTOR AND VERIFIED IN THE FIELD BY LANDSCAPE ARCHITECT PRIOR TO THE EXCAVATION OF PITS.
 - ALL PLANT MATERIAL SHALL BE NURSERY GROWN STOCK UNLESS OTHERWISE NOTED.
 - DECIDUOUS TREES TO HAVE A MINIMUM 1800 CLEAR STEM ABOVE GRADE.
 - ALL PLANT MATERIAL SHALL BE WARRANTED FOR TWO YEARS FROM THE DATE OF SUBSTANTIAL COMPLETION AS DETERMINED BY THE LANDSCAPE ARCHITECT.
 - ALL STEEL T-BARS TO BE REMOVED AT THE ONE YEAR INTERIM INSPECTION UNLESS OTHERWISE DIRECTED BY THE LANDSCAPE ARCHITECT.
 - CONTRACTOR TO REINSTATE ALL EXISTING AREAS DAMAGED BY HIS WORK TO THE SATISFACTION OF THE LANDSCAPE ARCHITECT.
 - PERIODIC REVIEWS OF PLANTING SHALL BE CARRIED OUT BY THE LANDSCAPE ARCHITECT.
 - ACER RUBRUM, QUERCUS RUBRA AND CELTIS OCCIDENTALIS TO BE SPRING DUG SPECIMENS AND PLANTING IN THE SPRING ONLY.
 - ANY PROPOSED SUBSTITUTIONS OF PLANT SPECIES SHALL BE MADE WITH PLANTS OF EQUIVALENT OVERALL FORM, HEIGHT, BRANCHING HABIT, FLOWER, LEAF, COLOR, FRUIT AND CULTURE AND ONLY AFTER APPROVAL OF THE LANDSCAPE ARCHITECT.
 - TREE STAKING IS NOT RECOMMENDED WITHIN A 10m RADIUS OF THE PLAY EQUIPMENT.
- SOD & SEED NOTES:**
- SODDED AND SEEDED AREAS SHALL HAVE A MINIMUM 150mm TOPSOIL.
 - ALL SEED MUST BE FROM A RECOGNIZED SEED FIRM, MEETING THE REQUIREMENTS FOR THE SEEDS ACT FOR CANADA NO. 1 SEED. SEED SHALL BE CERTIFIED NO. 1 GRADE. A GERMINATION TEST MAY BE REQUESTED AND ALL LAWN SEED MUST COMPLY WITH FEDERAL AND PROVINCIAL SEED LAWS.
 - INSTALL STANDARD MIXTURE BY MECHANICAL SEEDING. USE BIODEGRADABLE EROSION CONTROL MAT AS DIRECTED BY LANDSCAPE ARCHITECT TO RETAIN SEED ON STEEP SLOPES (OVER 3:1 UNTIL ESTABLISHED).
 - PLANT SEED AT A DEPTH EQUAL TO THE WIDEST THICKNESS OF THE SEED. GENERALLY THIS IS 6mm (1/4") OR AS PER SUPPLIER'S RECOMMENDATIONS.
 - GENTLY TAMP OR ROLL THE SEEDBED AND DO NOT COMPACT THE SOIL. EXCESSIVE FORCE WILL DESTROY THE SOIL STRUCTURE AND INHIBIT GERMINATION.
 - CUT THE GRASS TO 50mm WHENEVER IT REACHES THE HEIGHT OF 70mm. REMOVE CLIPPINGS THAT WILL SMOOTHER GRASS.
 - SODDED AND SEEDED AREAS WILL BE ACCEPTED BY THE LANDSCAPE ARCHITECT FOLLOWING PERFORMANCE ACCEPTANCE, PROVIDED:
 - SEEDING AREAS ARE PROPERLY ESTABLISHED.
 - TURF IS FREE OF DEAD SPOTS AND WEEDS.
 - NO SURFACE SOIL IS VISIBLE WHEN GRASS HAS BEEN CUT TO A HEIGHT OF 50mm
 - TURF AREAS HAVE BEEN CUT NO LESS THAN TWICE (MINIMUM), THE LAST CUT BEING CARRIED OUT WITHIN 24 HOURS PRIOR TO THE ACCEPTANCE INSPECTION.



No.	Description	Date
2	Issued for First Submission	Oct/25/21
1	Issued for Coordination	Oct/18/21
Revision		
City Approval Stamp		



NAK design strategies

1285 WELLINGTON STREET, OTTAWA, ON K1Y 3A8 CANADA
 T 613.237.2345 F 613.237.4423 NAKDESIGNSTRATEGIES.COM

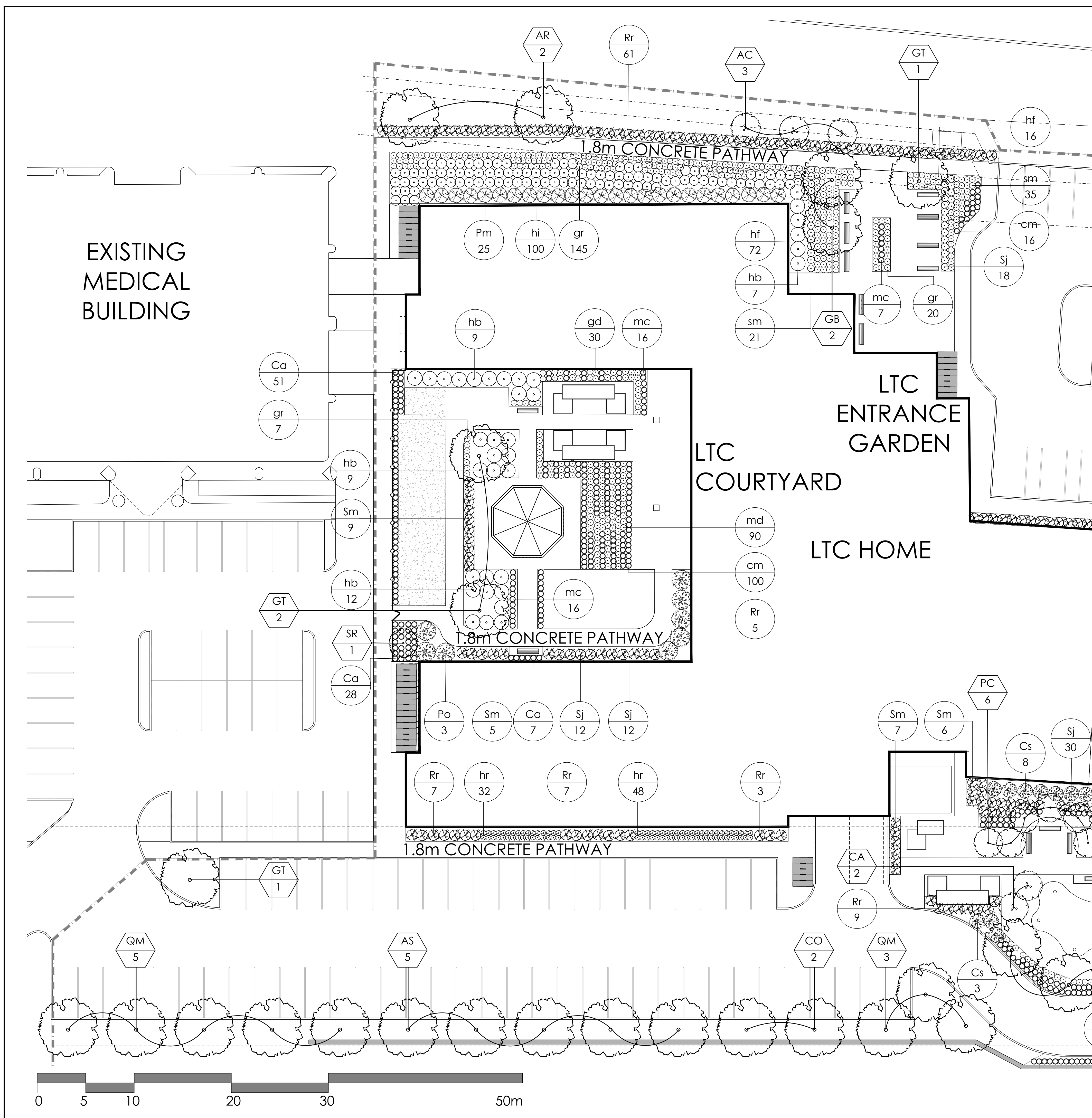
Project

SCHLEGEL VILLAGES CENTRE

Title

LANDSCAPE PLAN

Date	Oct/21	Sheet	L-01
Scale	1:400		
Drawn	Ty, SH		
Checked	TM		
Job No.	21-193		



PLANT LIST

KEY	QTY.	BOTANICAL NAME	COMMON NAME	CAL/HT. (mm/cm)	ROOT
LARGE DECIDUOUS TREES					
AR	4	ACER RUBRUM	RED MAPLE	60	W.B.
AS	8	ACER SACCHARUM	SUGAR MAPLE	60	W.B.
CO	3	CELTIS OCCIDENTALIS	HACKBERRY	60	W.B.
GB	5	GINKGO BILOBATA	GINKGO	60	W.B.
GT	6	GLEDTISIA TRIACANTHOS SHADEMASTER	SHADEMASTER LOCUST	60	W.B.
QR	3	QUERCUS RUBRA	RED OAK	60	W.B.
QM	11	QUERCUS MACROCARPA	BUR OAK	60	W.B.
SMALL DECIDUOUS/MULTI-STEM TREES					
AC	3	AMELANCHIER CANADENSIS	SERVICEBERRY *MULTI-STEM	60	W.B.
CA	4	CORNUS ALTERNIFOLIA	PAGODA DOGWOOD	60	W.B.
MP	4	MALLUS PUMILA	HONEYCRISP APPLE	20mm	7 GAL.
PC	9	PRUNUS CALLERYANA	ORNAMENTAL PEAR	60	W.B.
PM	2	PRUNUS CERASUS 'MONTMORENCY'	MONTMORENCY CHERRY	50	W.B.
PW	5	PRUNUS COMMUNIS WILLIAMS	BARLETT PEAR	20mm	7 GAL.
SR	2	SYRINGA RETICULATA	JAPANESE LILAC	60	W.B.
TREE FORM SHRUBS					
Ck	5	CORNUS KOUSA 'SATOMI'	SATOMI FLOWERING DOGWOOD	175cm	TREEFORM
Hg	5	HYDRANGEA PANICULATA 'GRANDIFLORA'	FEE GEE HYDRANGEA	40	8&B
GRASSES					
ca	338	CALAMAGROSIS ACUTIFOLIA 'KARL FORESTER'	KARL FORESTER REED GRASS	125cm	1 GAL.
cm	244	CAREX MORROWII 'ICE DANCE'	ICE DANCE SEDGE	30cm	1 GAL.
mc	96	MOLINIA CAERULEA 'MOORFLAME'	MOORFLAME GRASS	40cm	1 GAL.
PERENNIALS					
gd	27	DIGITALIS PURPUREA 'CANDY MOUNTAIN'	FOXGLOVE	100cm	1 GAL.
gr	45	GERANIUM MACULATUM	RUIBECKIA HIRTA	40cm	1 GAL.
gr	259	GERANIUM MACULATUM	WILD GERANIUM	25cm	1 GAL.
hp	97	HEMEROCALLIS 'PURPLE DE ORO'	PURPLE DE ORO DAYLILY	50cm	1 GAL.
hp	81	HEMEROCALLIS 'TIGGER'	TIGGER DAYLILY	50cm	1 GAL.
ha	70	HOSTA 'AUGUST MOON'	AUGUST MOON HOSTA	45cm	1 GAL.
hb	109	HOSTA 'BLUE MAMMOTH'	BLUE MAMMOTH HOSTA	80cm	1 GAL.
hi	134	HEUCHERA 'FOREVER PURPLE'	FOREVER PURPLE CORAL BELLS	25cm	1 GAL.
hg	17	HOSTA 'GREAT ARRIVAL'	GREAT ARRIVAL	65cm	1 GAL.
hi	100	HOSTA 'PATRIOT'	FIRE AND ICE HOSTA	35cm	1 GAL.
is	80	IRIS SIBIRICA 'WHITE SWIRL'	SIBERIAN IRIS	50cm	1 GAL.
md	90	NICHKARDA DIDYMA 'GRAND PARADE'	GRAND PARADE BEEBALM	35cm	1 GAL.
sm	128	SEDUM 'MAESTRO'	MAESTRO STONECROP	60cm	1 GAL.
sr	25	SMILACINA RACEMOSA	FALSE SOLOMON'S SEAL	80cm	1 GAL.
DECIDUOUS SHRUBS					
Cs	27	CORNUS STOLONIFERA 'ARCTIC FIRE'	RED OSIER DOGWOOD	200cm	1 GAL.
Ed	4	DWARF BURNING BUSH	EUONYMUS ALATUS 'COMPACTUS'	2m	1 GAL.
Ha	15	HYDRANGEA ARBORESCENS 'ANNABELLE'	ANNABELLE	125cm	1 GAL.
Po	6	PHYSCARPUS OPULENSIS 'DART'S GOLD'	DART'S GOLD NINEBARK	125cm	1 GAL.
Rf	95	ROSA RUGOSA 'NEARLY WILD'	NEARLY WILD ROSE	90cm	1 GAL.
Sj	170	SYRINGA JAPONICA 'NEON FLASH'	NEON FLASH SYRINGA	100cm	1 GAL.
Sm	128	SYRINGA MEYERI 'PALIBIN'	DWARF KOREAN LILAC	200cm	1 GAL.
CONIFEROUS SHRUBS					
Jh	9	JUNIPERUS HORIZONTALIS 'BAR HARBOR'	BAR HARBOR JUNIPER	20cm	1 GAL.
Pm	31	PINUS MUGO VAR. PUMILIO	DWARF MUGO VAR. PUMILIO	125cm	1 GAL.
Tc	28	TAXUS CUSPIDATA 'NANA'	DWARF JAPANESE YEW	125cm	1 GAL.

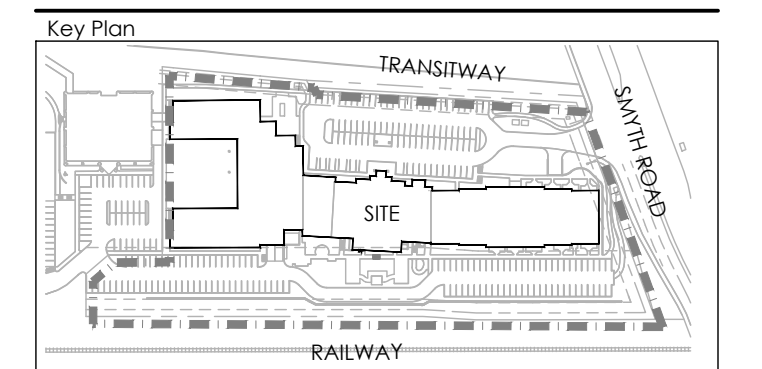
PLANTING NOTES:

- CONTRACTOR TO VERIFY LOCATION OF ALL SERVICES PRIOR TO ANY EXCAVATION.
- LOCATIONS OF ALL PLANT MATERIALS TO BE STAKED BY THE CONTRACTOR AND VERIFIED IN THE FIELD BY LANDSCAPE ARCHITECT PRIOR TO THE EXCAVATION OF PITS.
- ALL PLANT MATERIAL SHALL BE NURSERY GROWN STOCK UNLESS OTHERWISE NOTED.
- DECIDUOUS TREES TO HAVE A MINIMUM 1800 CLEAR STEM ABOVE GRADE.
- ALL PLANT MATERIAL SHALL BE WARRANTED FOR TWO YEARS FROM THE DATE OF SUBSTANTIAL COMPLETION AS DETERMINED BY THE LANDSCAPE ARCHITECT.
- ALL STEEL T-BARS TO BE REMOVED AT THE ONE YEAR INTERIM INSPECTION UNLESS OTHERWISE DIRECTED BY THE LANDSCAPE ARCHITECT.
- CONTRACTOR TO REINSTATE ALL EXISTING AREAS DAMAGED BY HIS WORK TO THE SATISFACTION OF THE LANDSCAPE ARCHITECT.
- PERIODIC REVIEWS OF PLANTING SHALL BE CARRIED OUT BY THE LANDSCAPE ARCHITECT.
- ACER RUBRUM, QUERCUS RUBRA AND CELTIS OCCIDENTALIS TO BE SPRING DUG SPECIMENS AND PLANTING IN THE SPRING ONLY.
- ANY PROPOSED SUBSTITUTIONS OF PLANT SPECIES SHALL BE MADE WITH PLANTS OF EQUIVALENT OVERALL FORM, HEIGHT, BRANCHING HABIT, FLOWER, LEAF, COLOR, FRUIT AND CULTURE AND ONLY AFTER APPROVAL OF THE LANDSCAPE ARCHITECT.
- TREE STAKING IS NOT RECOMMENDED WITHIN A 10m RADIUS OF THE PLAY EQUIPMENT.

SOD & SEED NOTES:

- SODDED AND SEEDED AREAS SHALL HAVE A MINIMUM 150mm TOPSOIL.
- ALL SEED MUST BE FROM A RECOGNIZED SEED FIRM, MEETING THE REQUIREMENTS FOR THE SEEDS ACT FOR CANADA NO. 1 SEED. SEED SHALL BE CERTIFIED NO. 1 GRADE. A GERMINATION TEST MAY BE REQUESTED AND ALL LAWN SEED MUST COMPLY WITH FEDERAL AND PROVINCIAL SEED LAWS.
- INSTALL STANDARD MIXTURE BY MECHANICAL SEEDING. USE BIODEGRADABLE EROSION CONTROL MAT AS DIRECTED BY LANDSCAPE ARCHITECT TO RETAIN SEED ON STEEP SLOPES (OVER 3:1 UNTIL ESTABLISHED).
- PLANT SEED AT A DEPTH EQUAL TO THE WIDEST THICKNESS OF THE SEED. GENERALLY THIS IS 6mm (1/4") OR AS PER SUPPLIERS RECOMMENDATIONS.
- GENTLY TAMP OR ROLL THE SEEDBED AND DO NOT COMPACT THE SOIL. EXCESSIVE FORCE WILL DESTROY THE SOIL STRUCTURE AND INHIBIT GERMINATION.
- CUT THE GRASS TO 50mm WHENEVER IT REACHES THE HEIGHT OF 70mm. REMOVE CLIPPINGS THAT WILL SMOOTHER GRASS.
- SODDED AND SEEDED AREAS WILL BE ACCEPTED BY THE LANDSCAPE ARCHITECT FOLLOWING PERFORMANCE ACCEPTANCE, PROVIDED:
 - SEEDED AREAS ARE PROPERLY ESTABLISHED.
 - TURF IS FREE OF DEAD SPOTS AND WEEDS.
 - NO SURFACE SOIL IS VISIBLE WHEN GRASS HAS BEEN CUT TO A HEIGHT OF 50mm.
 - TURF AREAS HAVE BEEN CUT NO LESS THAN TWICE (MINIMUM), THE LAST CUT BEING CARRIED OUT WITHIN 24 HOURS PRIOR TO THE ACCEPTANCE INSPECTION.

Contractor shall check all dimensions on the work and report any discrepancy to the Landscape Architect before proceeding. All drawings and specifications are the property of the Landscape Architect and must be returned at the completion of the work. This drawing is not to be used for construction until signed by the Landscape Architect.



LEGEND

PROPERTY LINE

FENCING

2.0m HT. METAL FENCE

PLANTING

EXISTING DECIDUOUS TREE

EXISTING CONIFEROUS TREE

LARGE DECIDUOUS TREE

SMALL DECIDUOUS TREE

SOD

ARTIFICIAL TURF

STONEDUST PAVING

CONIFEROUS SHRUB

DECIDUOUS SHRUB

GRASSES / PERENNIALS

SURFACING

C.I.P CONCRETE

CONCRETE PATH

PLANTING KEY

TREE SPECIES QUANTITY

SHRUB SPECIES QUANTITY

AMENITIES

BENCH

RAISED PLANTERS

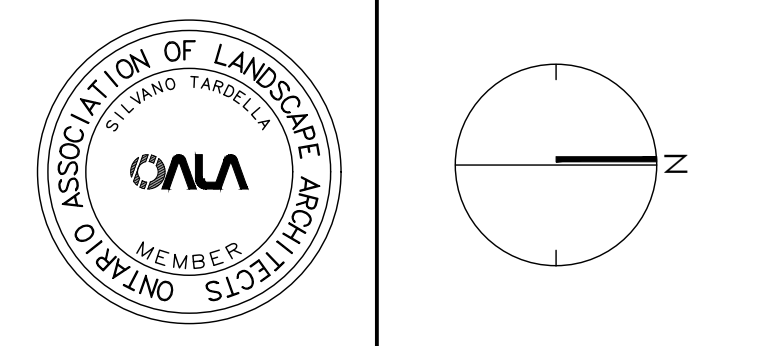
BIKE RACK

ARMOUR STONE BOULDER

SHADE STRUCTURE

GAZEBO

2	Issued for First Submission	Oct/25/21
1	Issued for Coordination	Oct/18/21
No.	Description	Date
Revision		
City Approval Stamp		



NAK design strategies

1285 WELLINGTON STREET, OTTAWA, ON K1Y 3A8 CANADA
 T 613.237.2345 F 613.237.6423 NAKDESIGNSTRATEGIES.COM

Project

SCHLEGEL VILLAGES CENTRE

Title

LANDSCAPE PLAN

Date Oct/21

Scale 1:200

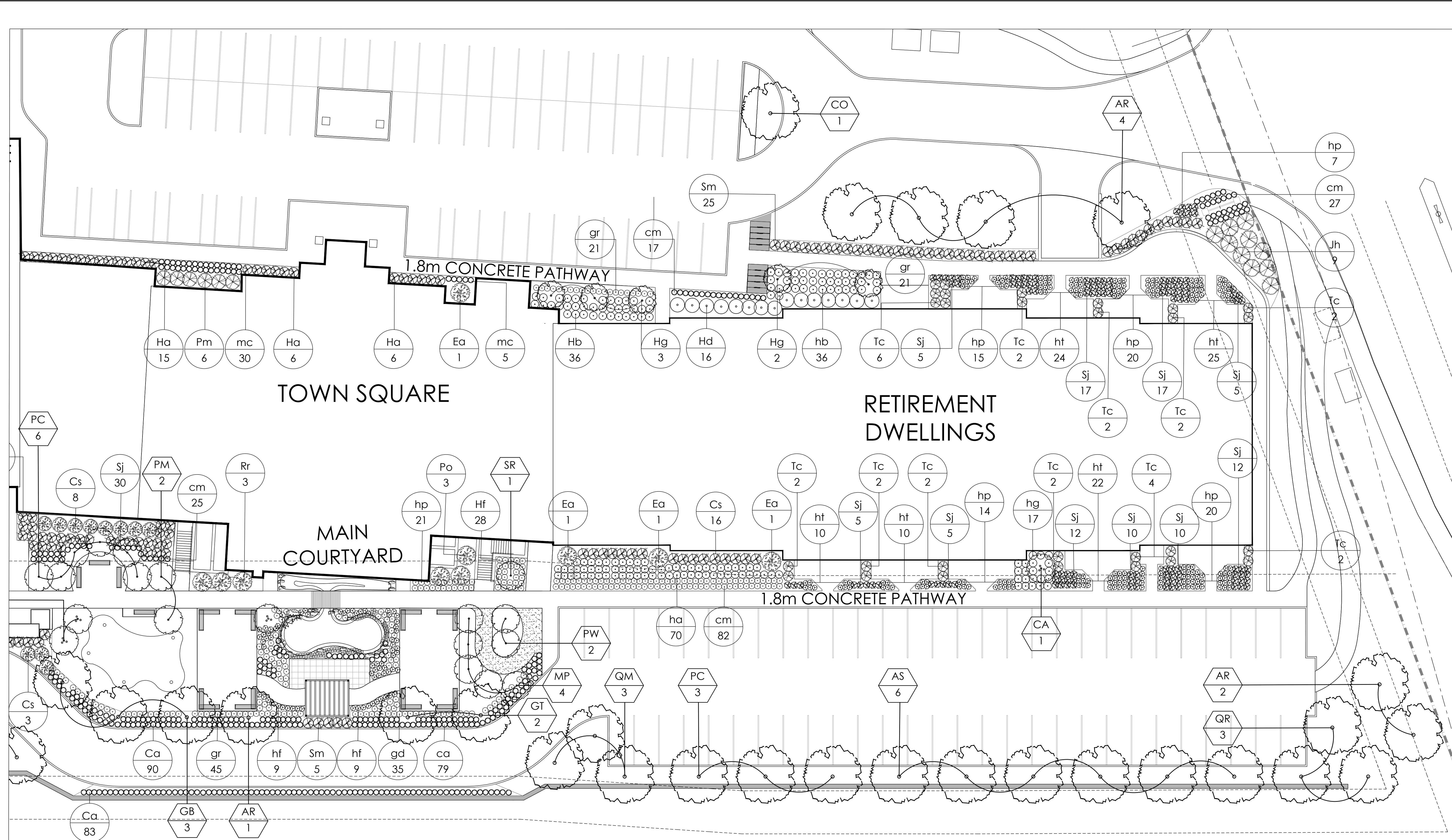
Drawn Ty, SH

Checked TM

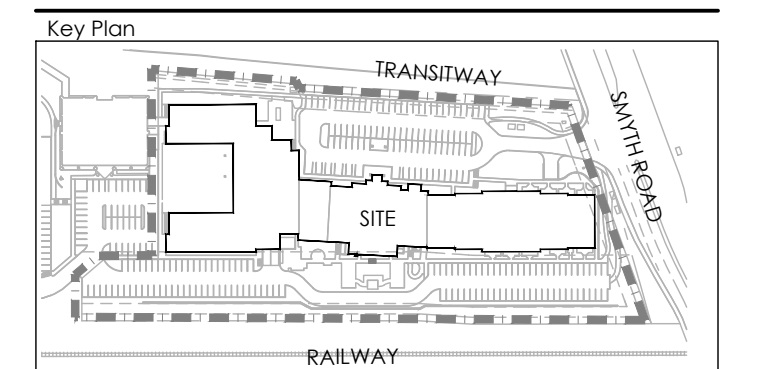
Job No. 21-193

Sheet

L-02



Contractor shall check all dimensions on the work and report any discrepancy to the Landscape Architect before proceeding. All drawings and specifications are the property of the Landscape Architect and must be returned at the completion of the work. This drawing is not to be used for construction until signed by the Landscape Architect.



LEGEND

- PROPERTY LINE
- FENCING: 2.0m HT. METAL FENCE
- PLANTING:
 - EXISTING DECIDUOUS TREE
 - EXISTING CONIFEROUS TREE
 - LARGE DECIDUOUS TREE
 - SMALL DECIDUOUS TREE
 - SOD
 - ARTIFICIAL TURF
 - STONEDUST PAVING
 - CONIFEROUS SHRUB
 - DECIDUOUS SHRUB
 - GRASSES / PERENNIALS
- SURFACING:
 - C.I.P. CONCRETE
 - CONCRETE PATH
- PLANTING KEY:
 - TREE SPECIES QUANTITY
 - SHRUB SPECIES QUANTITY
- AMENITIES:
 - BENCH
 - RAISED PLANTERS
 - BIKE RACK
 - ARMOUR STONE BOULDER
 - SHADE STRUCTURE
 - GAZEBO

2	Issued for First Submission	Oct/25/21
1	Issued for Coordination	Oct/18/21
No.	Description	Date
Revision		
City Approval Stamp		

NAK
design strategies
1285 WELLINGTON STREET, OTTAWA, ON K1Y 3A8 CANADA
T 613.237.2345 F 613.237.4423 NAKDESIGNSTRATEGIES.COM

SCHLEGEL VILLAGES CENTRE

Title: LANDSCAPE PLAN

Date: Oct/21
Scale: 1:200
Drawn: Ty, SH
Checked: TM
Job No.: 21-193

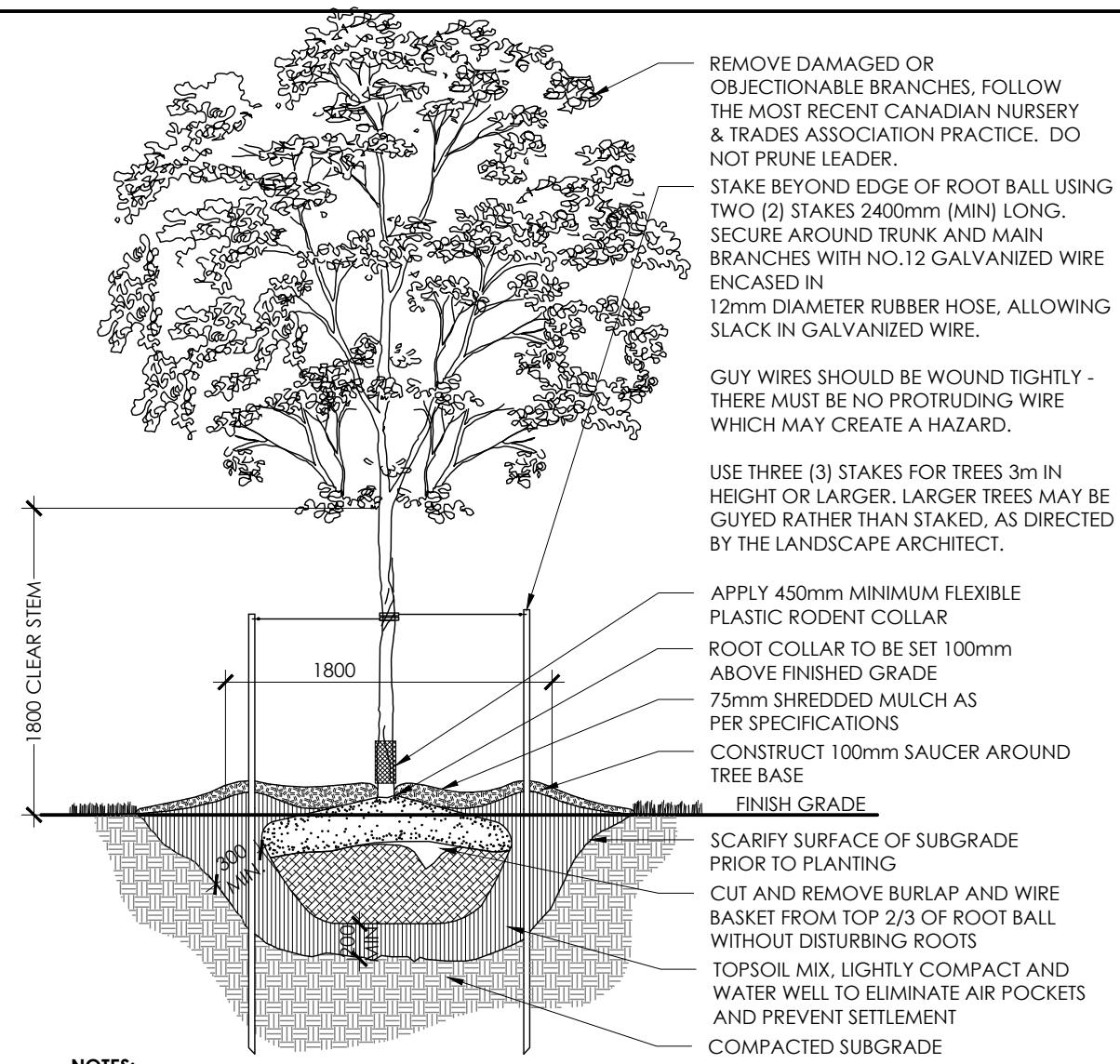
Sheet: L-03

PLANT LIST

KEY	QTY	BOTANICAL NAME	COMMON NAME	CAL/HT.	ROOT
LARGE DECIDUOUS TREES					
AR	4	ACER RUBRUM	RED MAPLE	60	W.B.
AS	8	ACER SACCHARUM	SUGAR MAPLE	60	W.B.
CO	3	CELTIS OCCIDENTALIS	HACKBERRY	60	W.B.
GB	5	GINKGO BILBOBA	GINKGO	60	W.B.
GT	6	GLEDISIA TRIACANTHOS 'SHADEMASTER'	SHADEMASTER LOCUST	60	W.B.
QR	3	QUERCUS RUBRA	RED OAK	60	W.B.
QM	11	QUERCUS MACROCARPA	BUR OAK	60	W.B.
SMALL DECIDUOUS/MULTI-STEM TREES					
AC	3	AMELANCHIER CANADENSIS	SERVICEBERRY 'MULTI-STEM'	60	W.B.
CA	4	CORNUS ALTERNIFOLIA	PAGODA DOGWOOD	60	W.B.
MP	4	MALUS PUMILA	HONEYCRISP APPLE	20mm	7 GAL.
PC	9	PYRUS CALLERYANA	ORNAMENTAL PEAR	60	W.B.
PM	2	PRUNUS CERASUS 'MONTMORENCY'	MONTMORENCY CHERRY	50	W.B.
PW	5	PRUNUS COMMUNIS WILLIAMS	BARTLETT PEAR	20mm	7 GAL.
SR	2	SYRINGA RETICULATA	JAPANESE LILAC	60	W.B.
TREE FORM SHRUBS					
Ck	3	CORNUS KOUSA 'SATOMI'	SATOMI FLOWERING DOGWOOD	175cm	TREEFORM
Hg	5	HYDRANGEA PANICULATA 'GRANDIFLORA'	PEE GEE HYDRANGEA	40	B&B
GRASSES					
ca	338	CALAMAGROSTIS ACUTIFOLIA 'KARL FORESTER'	KARL FORESTER REED GRASS	125cm	1 GAL.
cm	244	CAREX MORROWII 'ICE DANCE'	ICE DANCE SEDGE	30cm	1 GAL.
mc	96	MOLINIA CAERULEA 'MOORFLAMME'	MOORFLAME GRASS	40cm	1 GAL.

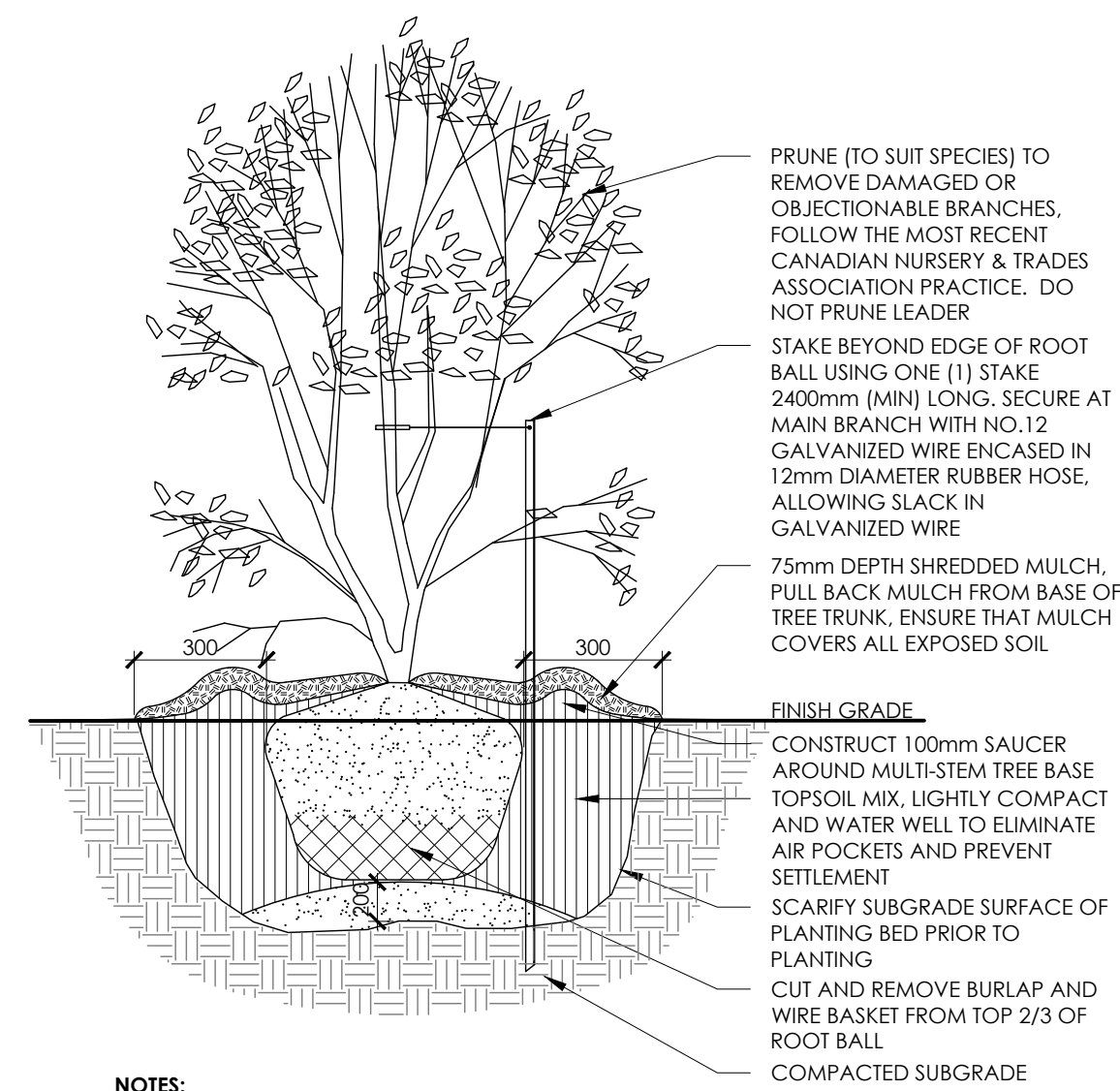
PERENNIALS					
dp	27	DIGITALIS PURPUREA 'CANDY MOUNTAIN'	FOXGLOVE	100cm	1 GAL.
gd	65	GERANIUM MACULATUM	RUDBECKIA HIRTA	25cm	1 GAL.
gr	239	HEMEROCALLIS 'PURPLE DE ORO'	WILD GERANIUM	25cm	1 GAL.
hp	97	HEMEROCALLIS 'TIGGER'	PURPLE DE ORO DAYLILY	50cm	1 GAL.
ht	81	HOSTA 'AUGUST MOON'	TIGGER DAYLILY	50cm	1 GAL.
hb	70	HOSTA 'BLUE MAMMOTH'	AUGUST MOON HOSTA	45cm	1 GAL.
hc	109	HEUCHERA X 'FOREVER PURPLE'	BLUE MAMMOTH HOSTA	80cm	1 GAL.
hf	134	HOSTA 'PATRIOT'	FOREVER PURPLE CORAL BELLS	25cm	1 GAL.
hg	17	MONARDA DIDYMA 'GRAND PARADE'	GREAT ARRIVAL	65cm	1 GAL.
hi	100	HOSTA 'PATRIOT'	FIRE AND ICE HOSTA	35cm	1 GAL.
is	80	IRIS SIBIRICA 'WHITE SWIRL'	SIBIRIAN IRIS	50cm	1 GAL.
md	90	MONARDA DIDYMA 'GRAND PARADE'	GRAND PARADE BEEBALM	35cm	1 GAL.
sm	128	SEDUM 'MAESTRO'	MAESTRO STONECROP	60cm	1 GAL.
sr	25	SMLACINA RACEMOSA	FALSE SOLOMON'S SEAL	80cm	1 GAL.
DECIDUOUS SHRUBS					
Ca	22	CORNUS STOLONIFERA 'ARCTIC FIRE'	RED OSIER DOGWOOD	200cm	1 GAL.
Ea	4	DWARF BURNING BUSH	EUONYMUS ALATUS 'COMPACTUS'	2m	1 GAL.
Ha	15	ANNABELLE HYDRANGEA	HYDRANGEA ARBORESCENS 'ANNABELLE'	125cm	1 GAL.
Po	6	PHYSOCARPUS OPULIFOLIUS 'DARTS GOLD'	DARTS GOLD NINEBARK	125cm	1 GAL.
Rr	95	ROSA RUGOSA 'NEARLY WILD'	NEARLY WILD ROSE	90cm	1 GAL.
Sj	170	SPIRAEA JAPONICA 'NEON FLASH'	NEON FLASH SPIREA	100cm	1 GAL.
Sm	128	SYRINGA MEYERI 'PAUBIN'	DWARF KOREAN LILAC	200cm	1 GAL.
CONIFEROUS SHRUBS					
Jh	9	JUNIPERUS HORIZONTALIS 'BAR HARBOR'	BAR HARBOR JUNIPER	20cm	1 GAL.
Pm	31	PINUS MUGO VAR. PUMILIO	DWARF MUGO VAR. PUMILIO	125cm	1 GAL.
Tc	28	TAXUS CUSPIDATA 'NANA'	DWARF JAPANESE YEW	125cm	1 GAL.





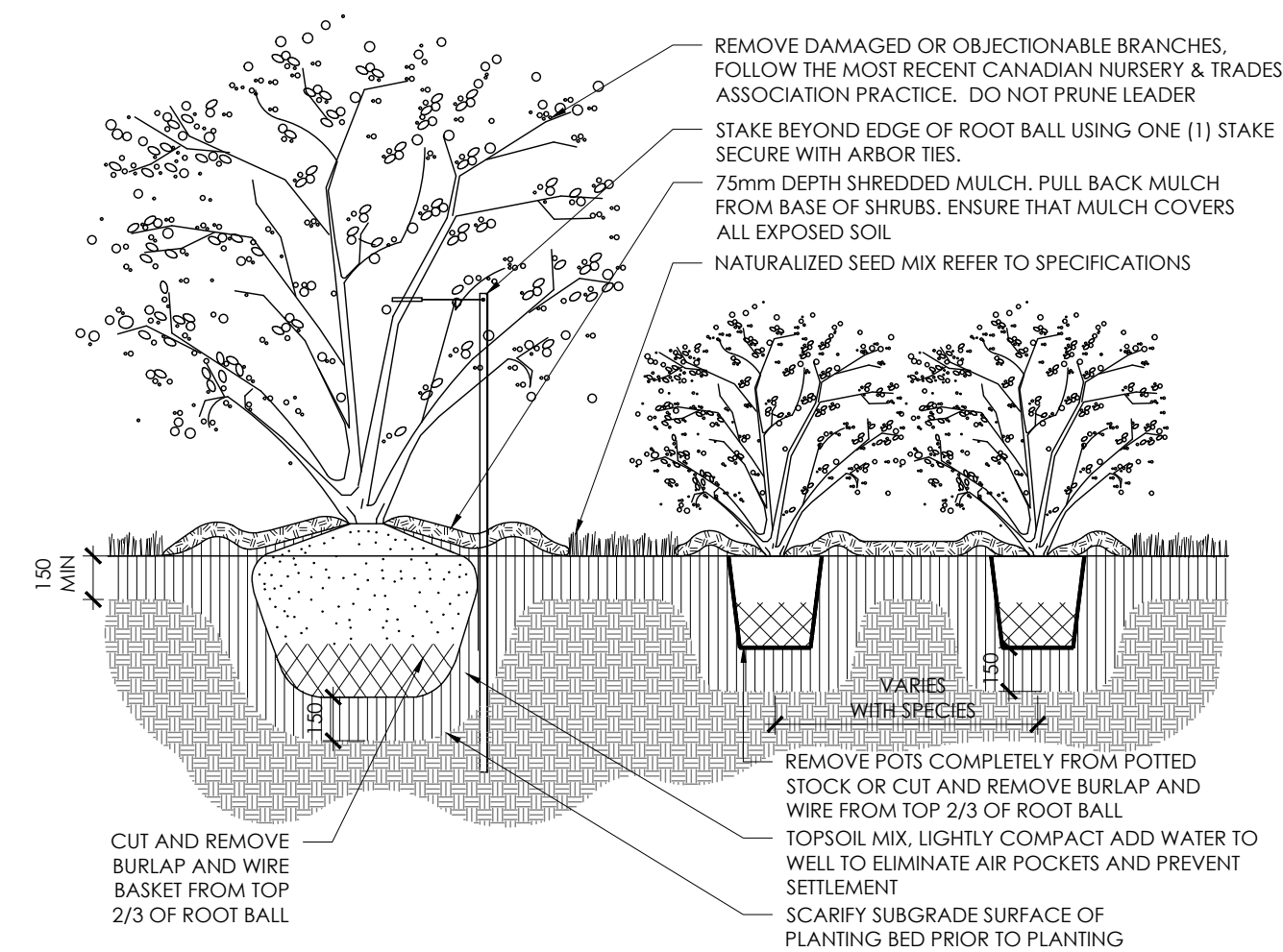
- NOTES:**
1. REMOVE STAKES AND RODENT GUARD AFTER ONE YEAR OR UNTIL TAKEOVER, UNLESS OTHERWISE DIRECTED BY THE LANDSCAPE ARCHITECT.
 2. TOPSOIL MIXTURE AND SHREDDED MULCH AS PER SPECIFICATION
 3. REMOVE TREE WRAP AFTER PLANTING
 4. CALIPER TO BE MEASURED AT THE BASE OF TREE AT ROOT BALL

1 DECIDUOUS TREE PLANTING
N.T.S.



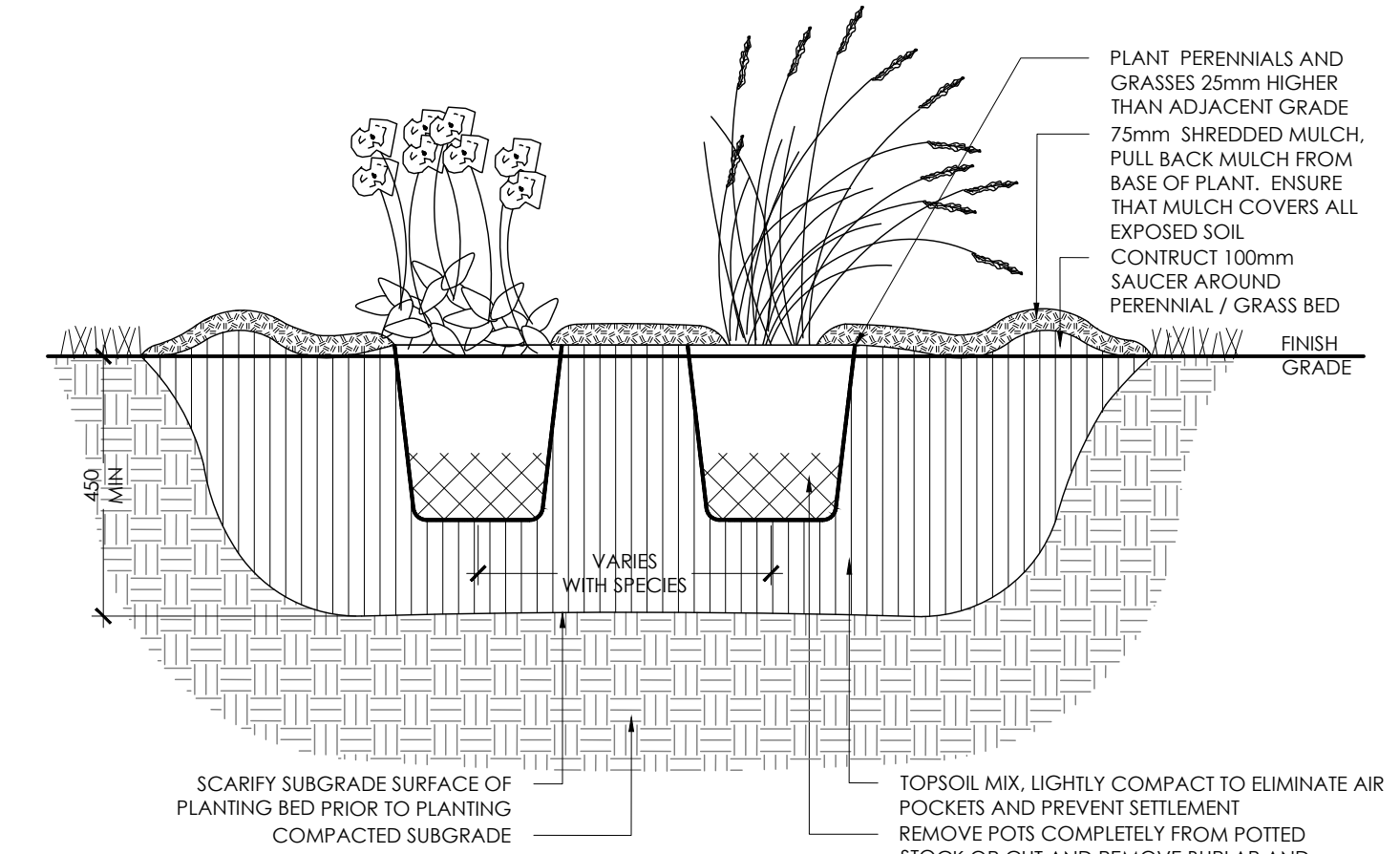
- NOTES:**
1. TOPSOIL MIXTURE AND SHREDDED MULCH AS PER SPECIFICATION.
 2. PROVIDE 100mm HIGH EARTH SAUCER AROUND SHRUB BED.
 3. STAKES TO BE REMOVED AFTER ONE YEAR OR UNTIL TAKEOVER UNLESS OTHERWISE DIRECTED BY LANDSCAPE ARCHITECT.

2 MULTI-STEM TREE PLANTING
N.T.S.



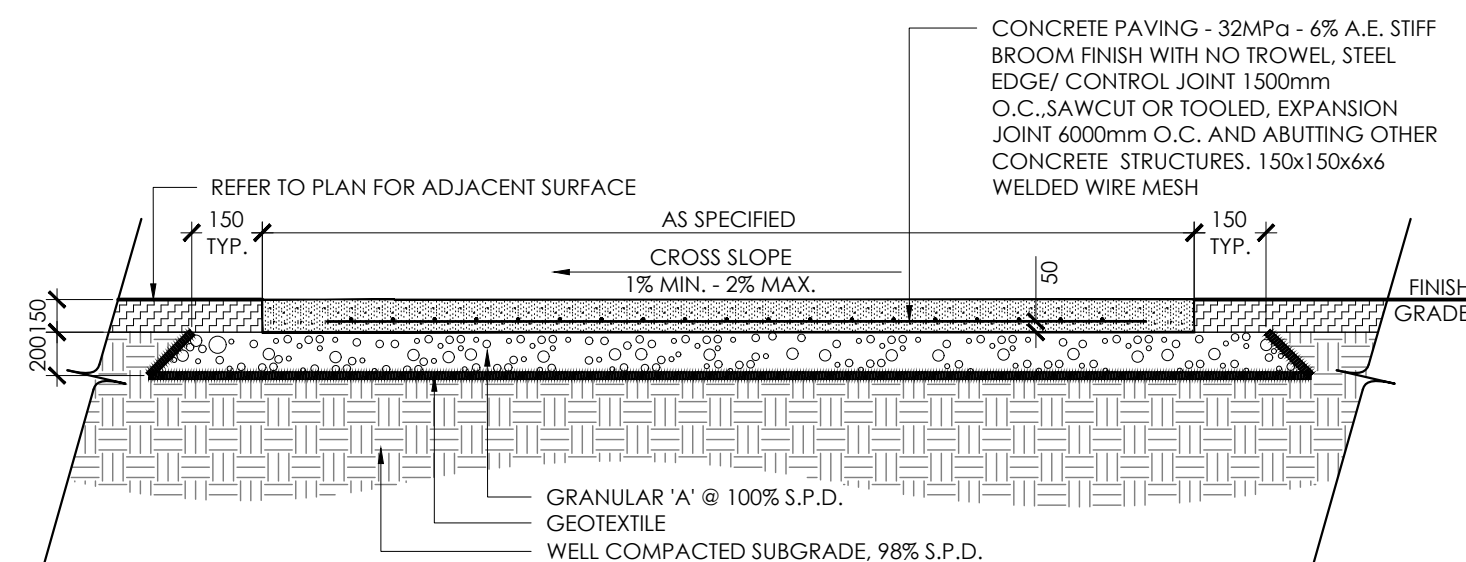
- NOTES:**
1. TOPSOIL MIXTURE AND SHREDDED MULCH AS PER SPECIFICATION.
 2. SHRUBS SPECIFIED TO BE PLANTED SO THAT ROOTS ARE FULLY EXTENDED IN PLANTING HOLE WITH SOIL MIX BACKFILLED CAREFULLY TO PREVENT ROOT DAMAGE.
 3. PROVIDE 100mm HIGH EARTH SAUCER AROUND SHRUB BED.
 4. STAKES TO BE REMOVED AFTER ONE YEAR OR UNTIL TAKEOVER UNLESS OTHERWISE DIRECTED BY LANDSCAPE ARCHITECT.

3 SHRUB BED PLANTING
N.T.S.



- NOTES:**
1. TOPSOIL MIXTURE AND SHREDDED MULCH AS PER SPECIFICATION.
 2. PROVIDE 100mm HIGH EARTH SAUCER AROUND PERENNIAL/GRASS BED.

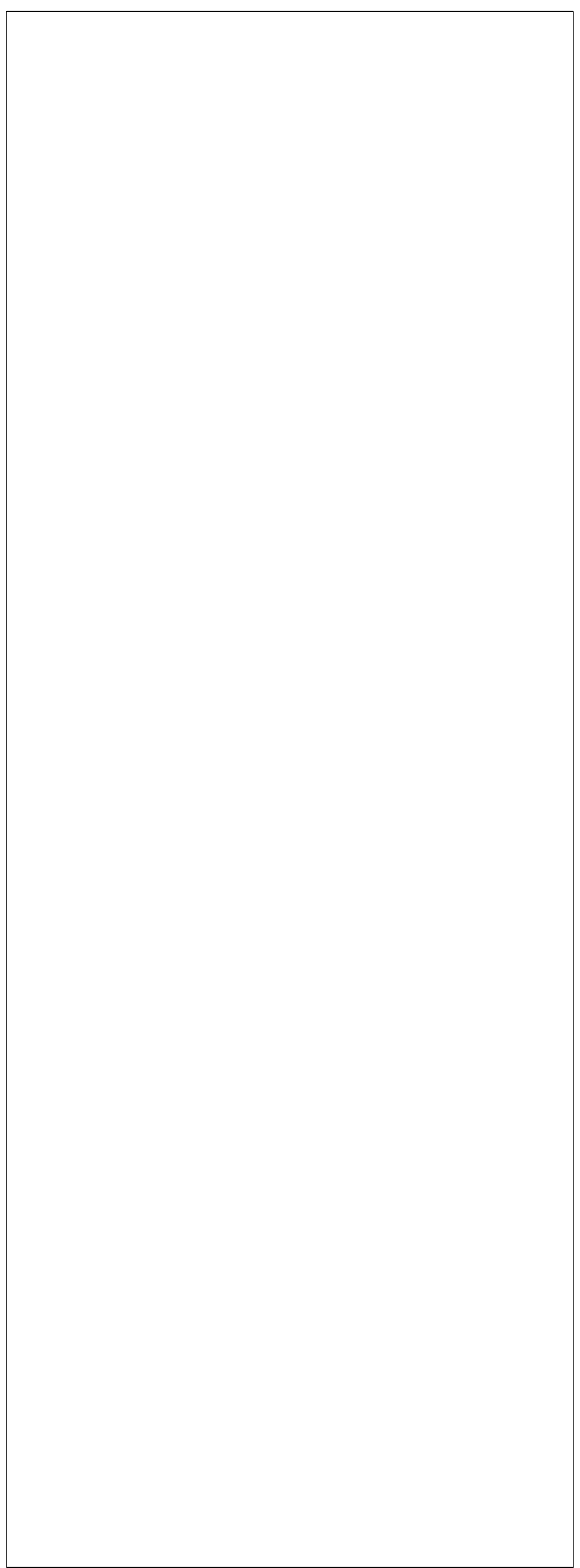
4 PERENNIAL AND ORNAMENTAL GRASS PLANTING
N.T.S.



- NOTES:**
1. CONCRETE TO BE 32 MPa CLASS C-2 MEETING THE REQUIREMENTS OF S.P. F-3510 AND PLACED IN ACCORDANCE WITH S.P. F-9040. REFER TO SPECIFICATIONS.
 2. GRANULAR 'A' SHALL MEET THE REQUIREMENTS OF OPS5 1010.
 3. APPROVED NON-WOVEN CLASS 1 GEOTEXTILE AS PER MS-22.15 WHEN WARRANTED BY SOIL CONDITION, SUBJECT TO APPROVAL BY THE LANDSCAPE ARCHITECT.

5 LIGHT DUTY CONCRETE PAVING
N.T.S.

Contractor shall check all dimensions on the work and report any discrepancy to the Landscape Architect before proceeding. All drawings and specifications are the property of the Landscape Architect and must be returned at the completion of the work. This drawing is not to be used for construction until signed by the Landscape Architect.



No.	Description	Date
2	Issued for First Submission	Oct/25/21
1	Issued for Coordination	Oct/18/21
Revision		
City Approval Stamp		

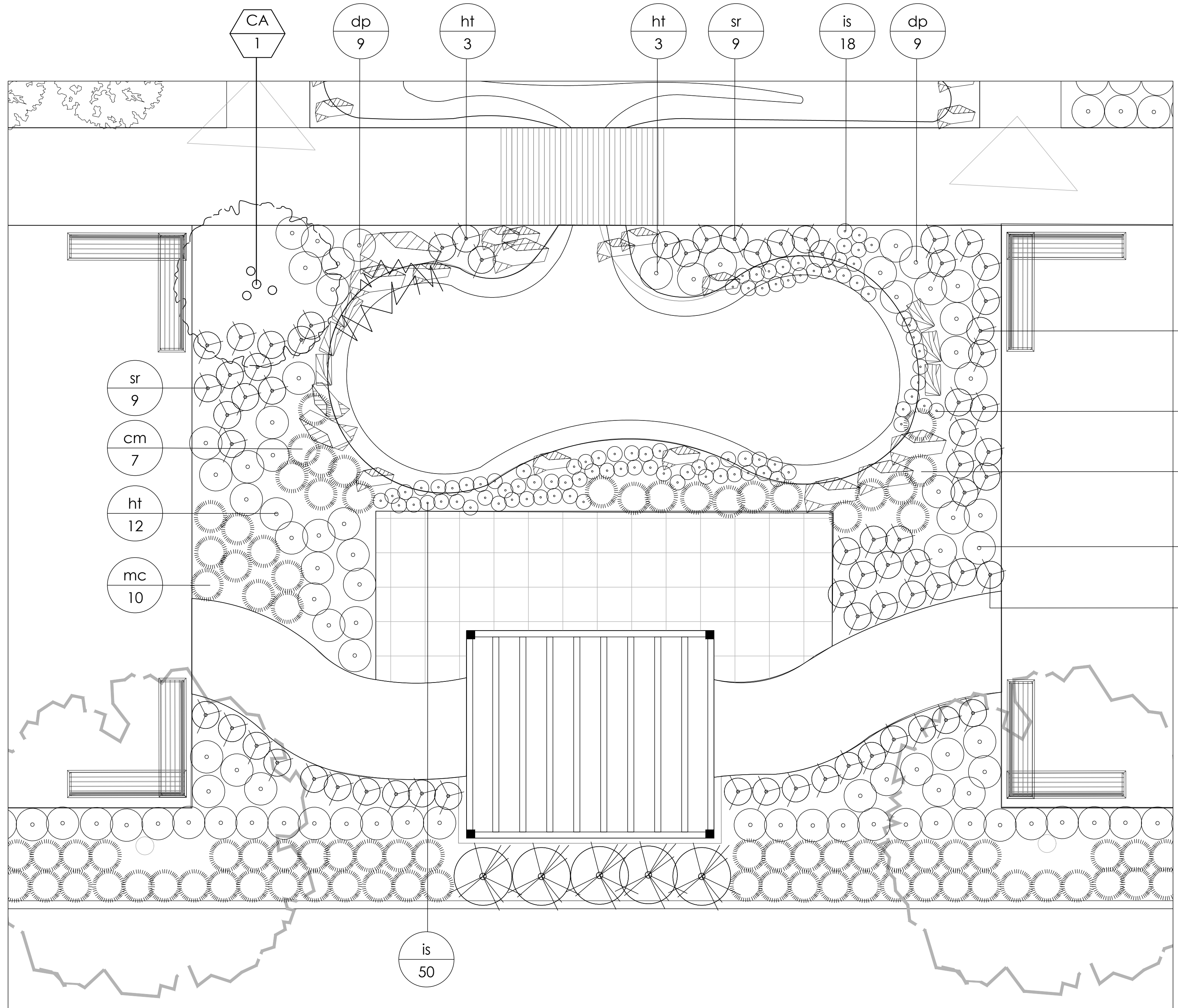


NAK design strategies
1285 WELLINGTON STREET, OTTAWA, ON K1Y 3A8 CANADA
T 613.237.2345 F 613.237.4423 NAKDESIGNSTRATEGIES.COM
Project

SCHLEGEL VILLAGES CENTRE

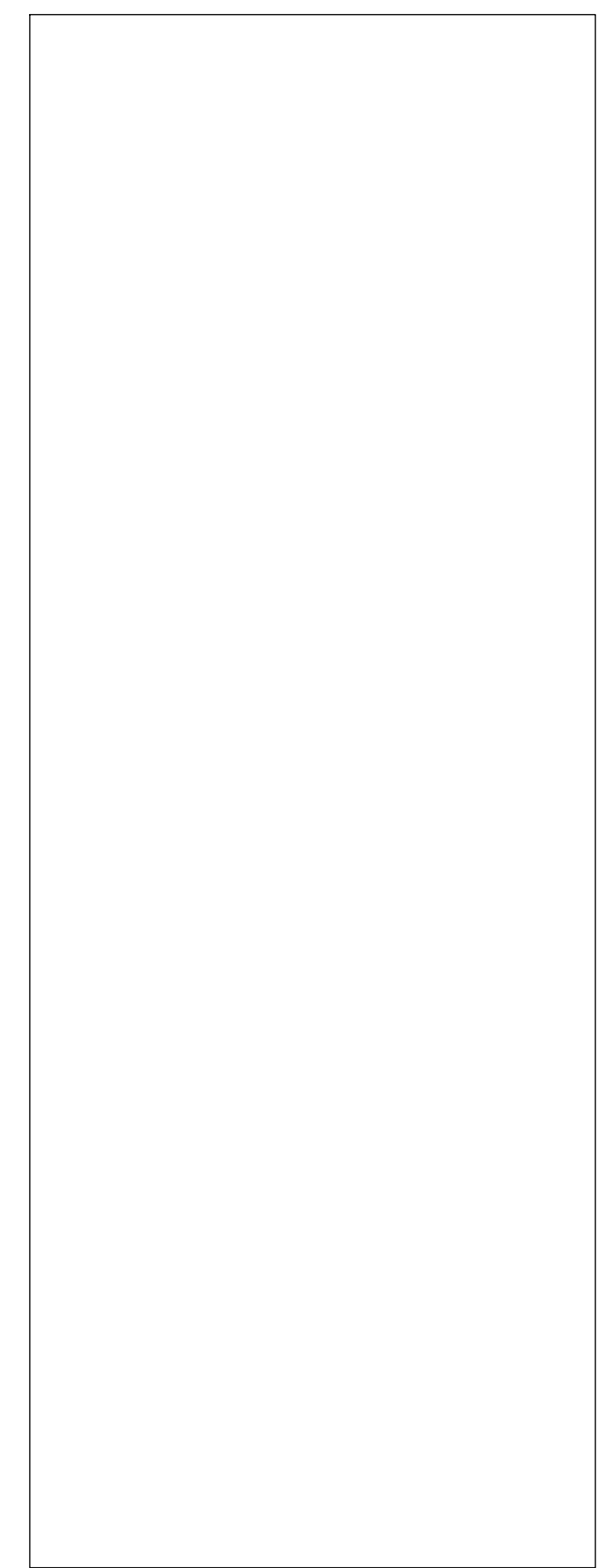
Title	DETAILS
Date	Oct/21
Scale	N.T.S.
Drawn	Ty, SH
Checked	TM
Job No.	21-193
Sheet	D-01

Contractor shall check all dimensions on the work and report any discrepancy to the Landscape Architect before proceeding. All drawings and specifications are the property of the Landscape Architect and must be returned at the completion of the work. This drawing is not to be used for construction until signed by the Landscape Architect.



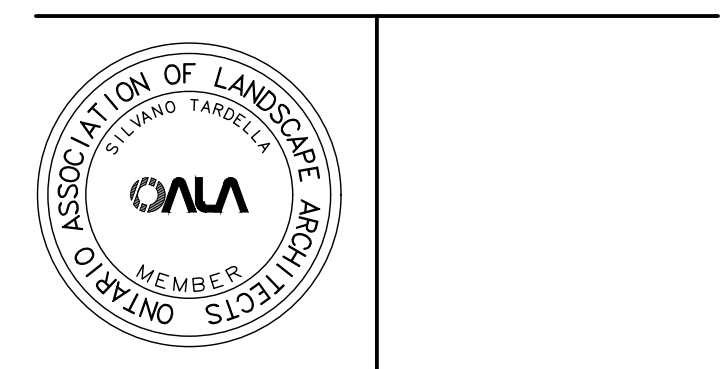
KEY	QTY	BOTANICAL NAME	COMMON NAME	CAL/HT (mm/cm)	ROOT
LARGE DECIDUOUS TREES					
AR	4	ACER RUBRUM	RED MAPLE	60	W.B.
AS	8	ACER SACCHARUM	SUGAR MAPLE	60	W.B.
CO	3	CELTIS OCCIDENTALIS	HACKBERRY	60	W.B.
GB	5	GINKGO BILOBA	GINKGO	60	W.B.
GT	4	GLEDITSIA TRIACANTHOS SHADEMASTER	SHADEMASTER LOCUST	60	W.B.
QR	3	QUERCUS RUBRA	RED OAK	60	W.B.
QM	11	QUERCUS MACROCARPA	BUR OAK	60	W.B.
SMALL DECIDUOUS/MULTI-STEM TREES					
AC	3	AMELANCHIER CANADENSIS	SERVICEBERRY *MULTI-STEM	60	W.B.
CA	4	CORNUS ALTERNIFOLIA	PAGODA DOGWOOD	60	W.B.
MP	4	MALUS PUMILA	HONEYCRISP APPLE	20mm	7 GAL.
PC	9	PYRUS CALLERYANA	ORNAMENTAL PEAR	60	W.B.
PM	2	PRUNUS CERASUS 'MONTMORENCY'	MONTMORENCY CHERRY	50	W.B.
PW	5	PYRUS COMMUNIS WILLIAMS	BARTLETT PEAR	20mm	7 GAL.
SR	2	SYRINGA RETICULATA	JAPANESE LILAC	60	W.B.
TREE FORM SHRUBS					
CS	5	CORNUS KOUSA 'SATOMI'	SATOMI FLOWERING DOGWOOD	175cm	TREEFORM
Hg	5	HYDRANGEA PANICULATA 'GRANDIFLORA'	PEE GEE HYDRANGEA	40	B&B
GRASSES					
ca	338	CALAMAGROSIS ACUTIFOLIA 'KARL FORESTER'	KARL FORESTER REED GRASS	125cm	1 GAL.
cm	244	CAREX MORROWII 'ICE DANCE'	ICE DANCE SEDGE	30cm	1 GAL.
mc	96	MOLINIA CAERULEA 'MOORFLAMME'	MOORFLAME GRASS	40cm	1 GAL.
PERENNIALS					
dp	27	DIGITALIS PURPUREA 'CANDY MOUNTAIN'	FOXGLOVE	100cm	1 GAL.
gd	65	GERANIUM MACULATUM	RUDBECKIA HIRTA	25cm	1 GAL.
gr	259	HEMEROCALLIS 'PURPLE DE ORO'	WILD GERANIUM	50cm	1 GAL.
hp	97	HEMEROCALLIS 'TIGER'	PURPLE DE ORO DAYLILY	50cm	1 GAL.
ht	81	HOSTA 'AUGUST MOON'	TIGER DAYLILY	50cm	1 GAL.
ha	70	HOSTA 'BLUE MAMMOTH'	AUGUST MOON HOSTA	45cm	1 GAL.
hb	109	HEUCHERA 'FOREVER PURPLE'	BLUE MAMMOTH HOSTA	80cm	1 GAL.
hf	134	HOSTA 'GREAT ARRIVAL'	FOREVER PURPLE CORAL BELLS	25cm	1 GAL.
hg	17	HOSTA 'PATRIOT'	GREAT ARRIVAL	65cm	1 GAL.
hi	100	IRIS SIBIRICA 'WHITE SWIRL'	FIRE AND ICE HOSTA	35cm	1 GAL.
is	80	IRIS SIBIRICA 'NEON FLASH'	SIBERIAN IRIS	50cm	1 GAL.
md	90	MONARDA DIDYMA 'GRAND PARADE'	GRAND PARADE BEEBALM	35cm	1 GAL.
sm	128	SEDUM 'MAESTRO'	MAESTRO STONECROP	60cm	1 GAL.
sr	25	SMILACINA RACEMOSA	FALSE SOLOMON'S SEAL	80cm	1 GAL.
DECIDUOUS SHRUBS					
CS	27	CORNUS STOLONIFERA 'ARCTIC FIRE'	RED OSIER DOGWOOD	200cm	1 GAL.
Ec	4	DWARF BURNING BUSH	EUONYMUS ALATUS 'COMPACTUS'	2m	1 GAL.
Ha	15	ANNABELLE HYDRANGEA	HYDRANGEA ARBORESCENS 'ANNABELLE'	125cm	1 GAL.
Po	6	PHYSOCARPUS OPULIFOLIUS 'DARTS GOLD'	DART'S GOLD NINEBARK	125cm	1 GAL.
Rf	95	ROSA RUGOSA 'NEARLY WILD'	NEARLY WILD ROSE	90cm	1 GAL.
Sj	170	SPIRAEA JAPONICA 'NEON FLASH'	NEON FLASH SPIREA	100cm	1 GAL.
Sm	128	SYRINGA MEYERI 'PALBIN'	DWARF KOREAN LILAC	200cm	1 GAL.
CONIFEROUS SHRUBS					
Jh	9	JUNIPERUS HORIZONTALIS 'BAR HARBOR'	BAR HARBOR JUNIPER	20cm	1 GAL.
Pm	31	PINUS MUGO VAR. PUMILIO	DWARF MUGO VAR. PUMILIO	125cm	1 GAL.
Tc	28	TAXUS CUSPIDATA 'NANA'	DWARF JAPANESE YEW	125cm	1 GAL.

1 KOI POND
1:50



No.	Description	Date
2	Issued for First Submission	Oct/25/21
1	Issued for Coordination	Oct/18/21

Revision
City Approval Stamp



NAK
design strategies

1285 WELLINGTON STREET, OTTAWA, ON K1Y 3A8 CANADA
T 613.237.2345 F 613.237.4423 NAKDESIGNSTRATEGIES.COM

Project

SCHLEGEL VILLAGES CENTRE

Title
DETAILS

Date	Oct/21	Sheet	
Scale	N.T.S.		
Drawn	Ty, SH		
Checked	TM		
Job No.	21-193		

D-02