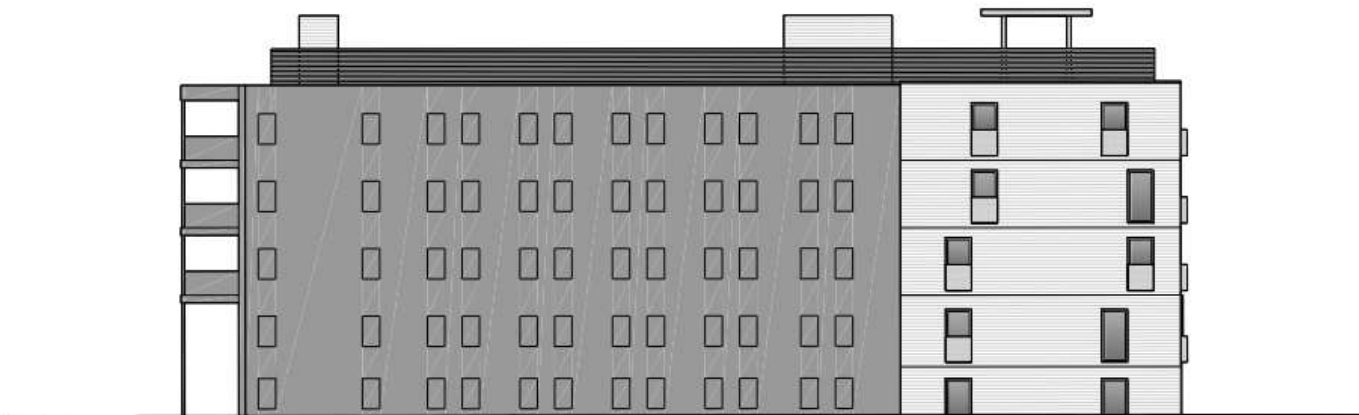


SERVICING & STORMWATER MANAGEMENT REPORT

330 MCLEOD STREET



Project No.: CCO-22-1647

City File No.: D07-12-XX-XXXX

Prepared for:

Smart Living Properties

226 Argyle Avenue

Ottawa, ON K2P 1B9

Prepared by:

McIntosh Perry Consulting Engineers Ltd.

115 Walgreen Road

Carp, ON K0A 1L0

2021-10-04

TABLE OF CONTENTS

1.0	PROJECT OVERVIEW.....	1
1.1	<i>Purpose.....</i>	1
1.2	<i>Site Description.....</i>	1
1.3	<i>Proposed Development and Statistics.....</i>	2
1.4	<i>Existing Conditions and Infrastructure.....</i>	2
1.5	<i>Approvals.....</i>	2
2.0	BACKGROUND STUDIES, STANDARDS AND REFERENCES.....	3
2.1	<i>Background Reports / Reference Information.....</i>	3
2.2	<i>Applicable Guidelines and Standards.....</i>	3
3.0	PRE-CONSULTATION SUMMARY.....	4
4.0	WATERMAIN.....	5
4.1	<i>Existing Watermain.....</i>	5
4.2	<i>Proposed Watermain.....</i>	5
5.0	SANITARY DESIGN.....	7
5.1	<i>Existing Sanitary Sewer.....</i>	7
5.2	<i>Proposed Sanitary Sewer.....</i>	7
6.0	STORM SEWER & STORMWATER MANAGEMENT DESIGN.....	8
6.1	<i>Existing Storm Sewers.....</i>	8
6.2	<i>Proposed Storm Sewers.....</i>	8
7.0	STORMWATER MANAGEMENT.....	9
7.1	<i>Design Criteria and Methodology.....</i>	9
7.2	<i>Quality Control.....</i>	9
7.2.1	<i>Runoff Calculations.....</i>	9
7.3	<i>Pre-Development Drainage.....</i>	10
7.4	<i>Post-Development Drainage.....</i>	10
8.0	EROSION AND SEDIMENT CONTROL.....	12
8.1	<i>Temporary Measures.....</i>	12
8.2	<i>Permanent Measures.....</i>	12
9.0	SUMMARY.....	14
10.0	RECOMMENDATION.....	15
11.0	STATEMENT OF LIMITATIONS.....	16

LIST OF TABLES

Table 1: Water Supply Design Criteria	5
Table 2: Summary of Estimated Water Demand	5
Table 3: Boundary Conditions Results	6
Table 4: Fire Protection Confirmation	6
Table 5: Sanitary Design Criteria	7
Table 6: Summary of Estimated Sanitary Flow	7
Table 7: Pre-Development Runoff Summary	10
Table 8: Post-Development Runoff Summary	10

APPENDICES

Appendix A: Site Location Plan

Appendix B: Background Documents

Appendix C: Watermain Calculations

Appendix D: Sanitary Calculations

Appendix E: Pre-Development Drainage Area Plan

Appendix F: Post-Development Drainage Area Plan

Appendix G: Stormwater Management Calculations

1.0 PROJECT OVERVIEW

1.1 Purpose

McIntosh Perry (MP) has been retained by Smart Living Properties to prepare this Servicing and Stormwater Management Report in support of the Zoning By-law Amendment (ZBLA) and Site Plan Control (SPC) application process for the proposed development at 330 McLeod Street, within the City of Ottawa.

The main purpose of this report is to present a servicing and stormwater management design for the development in accordance with the recommendations and guidelines provided by the City of Ottawa (City), the Rideau Valley Conservation Authority (RVCA), and the Ministry of the Environment, Conservation and Parks (MECP). This report will address the water, sanitary, and storm sewer servicing for the development, ensuring that existing infrastructure available will adequately service the proposed development.

This report should be read in conjunction with the following drawing:

- CCO-22-1647, C101 – Grading & Sediment and Erosion Control Plan
- CCO-22-1647, C102 – Servicing Plan
- CCO-22-1647, PRE – Pre-Development Drainage Area Plan (**Appendix E**)
- CCO-22-1647, POST – Post-Development Drainage Area Plan (**Appendix F**)

1.2 Site Description



Figure 1: Site Map

The subject property, herein referred to as the site, is located at 330 McLeod Street within the Somerset Ward in the City of Ottawa. The site covers approximately **0.11 ha** and is located west of the McLeod Street and O'Connor Street intersection, as shown by **Figure 1**, above. The site is zoned for Residential Use (R4UD). Additional details are included on the Site Location Plan included in **Appendix A**.

1.3 Proposed Development and Statistics

The proposed development incorporates a building addition to the existing residential building. 30 additional residential units to the existing 47 units are proposed, with street access from McLeod Street. The development is proposed within **0.042 ha** of the site. Refer to **Site Plan** prepared by Open Plan Architects and included in **Appendix B** for further details.

1.4 Existing Conditions and Infrastructure

The property is located within the City of Ottawa's Central Sub-Watershed. A residential building exists within the site and is proposed to be retained. The existing building is currently serviced via the City's infrastructure within McLeod Street. The asphalt parking area is proposed to be removed as part of the development.

Sewer and watermain mapping collected from the City of Ottawa indicate that the following services exist across the property frontages within the adjacent municipal right-of-ways:

◆ McLeod Street

- 203 mm diameter PVC watermain; and
- 525 mm diameter concrete combined sewer, tributary to the Rideau Canal Interceptor and tributary to the Ottawa River, in the event of an overflow event.

1.5 Approvals

The proposed development is subject to the City of Ottawa site plan control approval and zoning by-law amendment processes. Site plan control requires the City to review, provided concurrence and approve the engineering design package. Permits to construct can be requested once the City has issued a site plan agreement.

Based on pre-consultation with the City of Ottawa, an Environmental Compliance Approval (**ECA**) through the Ministry of Environment, Conservation and Parks (**MECP**) may be required since the site is located within a combined sewer area and is tributary to the existing combined sewer within McLeod Street.

2.0 BACKGROUND STUDIES, STANDARDS AND REFERENCES

2.1 Background Reports / Reference Information

As-built drawings of existing services, provided by the City of Ottawa Information centre, within the vicinity of the site were reviewed in order to identify infrastructure available to service the proposed development.

A topographic survey (19839-19) of the site was completed by Annis, O’Sullivan, Vollebakk Ltd. dated October 23rd, 2019.

The Site Plan (A001) was prepared by Open Plan Architects dated July 15th, 2021 (*Site Plan*).

2.2 Applicable Guidelines and Standards

City of Ottawa:

- ◆ Ottawa Sewer Design Guidelines, City of Ottawa, SDG002, October 2012. (*Ottawa Sewer Guidelines*)
 - Technical Bulletin ISTB-2014-01 City of Ottawa, February 2014. (*ISTB-2014-01*)
 - Technical Bulletin PIEDTB-2016-01 City of Ottawa, September 2016. (*PIEDTB-2016-01*)
 - Technical Bulletin ISTB-2018-01 City of Ottawa, January 2018. (*ISTB-2018-01*)
 - Technical Bulletin ISTB-2018-03 City of Ottawa, March 2018. (*ISTB-2018-03*)
 - Technical Bulletin ISTB-2019-01 City of Ottawa, January 2019. (*ISTB-2019-01*)
 - Technical Bulletin ISTB-2019-02 City of Ottawa, February 2019. (*ISTB-2019-02*)
- ◆ Ottawa Design Guidelines – Water Distribution City of Ottawa, July 2010. (*Ottawa Water Guidelines*)
 - Technical Bulletin ISD-2010-2 City of Ottawa, December 15, 2010. (*ISD-2010-2*)
 - Technical Bulletin ISDTB-2014-02 City of Ottawa, May 2014. (*ISDTB-2014-02*)
 - Technical Bulletin ISTB-2018-03 City of Ottawa, March 2018. (*ISTB-2018-03*)

Ministry of Environment, Conservation and Parks:

- ◆ Stormwater Planning and Design Manual, Ministry of the Environment, March 2003. (*MECP Stormwater Design Manual*)
- ◆ Design Guidelines for Sewage Works, Ministry of the Environment, 2008. (*MECP Sewer Design Guidelines*)

3.0 PRE-CONSULTATION SUMMARY

A pre-consultation meeting was conducted on February 10th, 2021 regarding the proposed development at 330 McLeod Street. Specific design parameters to be incorporated within this design are noted by the City of Ottawa pre-consultation found in **Appendix B** and are noted below.

- ◆ Control 5 through 100-year post-development flows to the 2-year storm event with a combined C value to a maximum of 0.40.
- ◆ Quality control are not required since the site is tributary to a combined sewer, ultimately tributary to Robert O. Pickard Environmental Centre (ROPEC).

4.0 WATERMAIN

4.1 Existing Watermain

The subject site is located within the 1W pressure zone, as shown by the Water Distribution figure located in **Appendix C**. There is an existing 203 mm diameter watermain, that runs the entire length of the property along McLeod Street. There are three public hydrants within 150 m of the site, as discussed in *Section 4.2*.

4.2 Proposed Watermain

It is proposed to service the proposed building addition through the existing building. A mechanical consultant will need to review and confirm whether upgrades to the existing building are required to accommodate the addition.

Table 1, below, summarizes the water supply design criteria obtained from the **Ottawa Water Guidelines** and utilized for the water analysis.

Table 1: Water Supply Design Criteria

Site Area	0.106 ha
Residential	280 L/day/person
Residential Apartment - Bachelor	1.4 person/unit
Max Day Peaking Factor - Residential	9.5 x avg. day
Peak Hour Peaking Factor - Residential	14.3 x avg. day

The water analysis results have been summarized in **Table 2**, below. The fire flow demand accounted for both the existing above-ground floor area and the proposed area.

Table 2: Summary of Estimated Water Demand

Design Parameter	Total Flow (L/s) Existing	Total Flow (L/s) Proposed	Total Flow (L/s) Total
Average Daily Demand	0.21	0.14	0.35
Max Day Demand	2.03	1.29	3.33
Max Day + Fire Flow Demand (150 L/s)	-	-	153.33
Peak Hour Demand	3.06	1.95	5.01

The Fire Underwriters Survey 1999 (FUS) method was utilized to estimate the required fire flow for the site. Fire flow requirements were calculated per City of Ottawa Technical Bulletin **ISTB-2018-03**.

The following parameters were coordinated with the architect:

- ◆ Type of construction – Non-Combustible Construction;
- ◆ Occupancy type – Limited Combustibility;
- ◆ Sprinkler Protection – Standard Sprinkler system.

The results of the calculations yielded a required fire flow of **150 L/s** (9,000 L/min). The detailed calculations for the FUS can be found in **Appendix C**.

The City provided the estimated water pressures at both for the average day scenario, peak hour scenario and the max day plus fire flow scenario for the demands indicated by the correspondence in **Appendix C**. The resulting pressures for the boundary conditions results are shown in **Table 3**, below.

Table 3: Boundary Conditions Results

Scenario	Proposed Demands (L/s)	Connection 1 HGL (m H ₂ O)* /kPa
Average Day Demand	0.35	45.1 / 442.0
Maximum Daily + Fire Flow Demand	153.33	35.4 / 346.9
Peak Hourly Demand	5.01	36.6 / 358.7

**Adjusted for an estimated ground elevation of 70.24m above the connection point for connection.*

The normal operating pressure range is anticipated to be 359 kPa to 442 kPa and will not be less than 275 kPa (40 psi) or exceed 689 kPa (100 psi). The proposed watermains will meet the minimum required 20 psi (140 kPa) from the **Ottawa Water Guidelines** at the ground level under maximum day demand and fire flow conditions.

To confirm the adequacy of fire flow to protect the proposed development, public fire hydrants within 150 m of the proposed building were accounted for per **ISTB 2018-03 Appendix I**. As demonstrated by **Table 4**, below.

Table 4: Fire Protection Confirmation

Fire Flow Demand (L/min.)	Fire Hydrant(s) within 75m	Fire Hydrant(s) within 150m	Combined Fire Flow (L/min)
9,000 L/min (150 L/s)	1 public	2 public	12,900 (215 L/s)

Based on City guidelines the existing hydrants located in the vicinity can provide adequate fire protection to the site.

5.0 SANITARY DESIGN

5.1 Existing Sanitary Sewer

The subject site lies within the Rideau Canal Interceptor combined sewer area, tributary to ROPEC. There is an existing 525 mm diameter combined sewer within McLeod Street, tributary to the Rideau River Interceptor sewer approximately 140 m downstream.

5.2 Proposed Sanitary Sewer

It is proposed to service the proposed building addition through the existing building. A mechanical consultant will need to review and confirm whether upgrades to the existing building are required to accommodate the addition.

Table 5, below, summarizes the wastewater design criteria identified by the *Ottawa Sewer Guidelines*.

Table 5: Sanitary Design Criteria

Design Parameter	Value
Residential Apartment – Bachelor	1.4 persons/unit
Average Daily Demand – Residential	280 L/day/person
Peaking Factor – Residential	3.59 (Total)
Extraneous Flow Allowance	0.33 L/s/ha

Table 6, below, summarizes the estimated wastewater flow from the proposed development. Refer to **Appendix D** for detailed calculations.

Table 6: Summary of Estimated Sanitary Flow

Design Parameter	Total Flow Existing (L/s)	Total Flow Proposed Addition (L/s)	Total Flow (L/s)
Total Estimated Average Dry Weather Flow	0.22	0.14	0.36
Total Estimated Peak Dry Weather Flow	0.78	0.50	1.26
Total Estimated Peak Wet Weather Flow	0.81	0.53	1.29

6.0 STORM SEWER & STORMWATER MANAGEMENT DESIGN

6.1 Existing Storm Sewers

Stormwater runoff from the site is currently tributary to the Rideau River Interceptor combined sewer area. There is an existing 525 mm diameter combined sewer within McLeod Street, tributary to the Rideau River Interceptor sewer approximately 140 m downstream.

6.2 Proposed Storm Sewers

A new 200 mm diameter storm service is proposed to be extended from 525 mm combined sewer within McLeod Street to the rear of the site. Refer to drawing **C102** for a detailed servicing layout.

Runoff collected on the roof of the proposed building addition will be stored and controlled internally using two roof drains. The roof drains will be used to limit the flow from the roof to the specified allowable release rate. For calculation purposes a Watts Accutrol roof drain was used estimate a reasonable roof flow. Other products maybe specified at detailed building design so long as release rates and storage volumes are respected.

See CCO-22-1647 - *POST* include in **Appendix F** of this report for more details. The Stormwater Management design for the subject property will be outlined in *Section 7.0* of this report.

Foundation drainage is proposed to be connected to the existing building drainage systems. The internal servicing layout is to be reviewed by the mechanical engineer.

7.0 STORMWATER MANAGEMENT

7.1 Design Criteria and Methodology

The following design criteria will need to be employed to develop the stormwater management design for the site, as directed by the City:

Quality Control

- Quality control are not required for this site as the development due to the combined sewer outlet.

Quantity Control

- Post-development to be restricted to the 2-year storm event, based on a calculated time of concentration greater than 10 minutes and a rational method coefficient of 0.40. Refer to *Section 7.2* for further details.

7.2 Quality Control

7.2.1 Runoff Calculations

Runoff calculations presented in this report are derived using the Rational Method, given as:

$$Q = 2.78CIA \text{ (L/s)}$$

Where:	C	= Runoff coefficient
	I	= Rainfall intensity in mm/hr (City of Ottawa IDF curves)
	A	= Drainage area in hectares

It is recognized that the Rational Method tends to overestimate runoff rates. As a result, the conservative calculation of runoff ensures that any SWM facility sized using this method is expected to function as intended.

The following coefficients were used to develop an average C for each area:

Roofs/Concrete/Asphalt	0.90
Undeveloped and Grass	0.20

As per the **Ottawa Sewer Guidelines**, the 5-year balanced 'C' value must be increased by 25% for a 100-year storm event to a maximum of 1.0.

The time of concentration (Tc) used for pre-development shall be calculated and no less than 10 minutes and post-development flows shall be calculated and no less than 10 minutes.

Based on the criteria listed in *Section 7.2.1*, the development will be required to restrict flow to the 2-year storm event. It is estimated that the target release rate during the 100-year event will be **3.56 L/s**, based on the construction limit of **0.042 ha**.

7.3 Pre-Development Drainage

A pre-development drainage area plan has been prepared for the site. As noted by drawing CCO-22-1647 – *PRE*, included in **Appendix E** of this report, rear and side yard drainage currently spill overland towards McLeod Street.

It has been assumed that the existing development contained no stormwater management controls for flow attenuation. The estimated pre-development peak flows for the 5 and 100-year events are summarized below in **Table 7**. See CCO-22-1647 - *PRE* in **Appendix E** and **Appendix G** for calculations.

Table 7: Pre-Development Runoff Summary

Drainage Area	Area (ha)	Q (L/s)	
		5-Year	100-Year
A1	0.042	10.72	20.42

7.4 Post-Development Drainage

To meet the stormwater objectives the development will contain rooftop control.

Based on the criteria listed in *Section 7.2.1*, the development will be required to restrict flow to the 2-year storm event. It is estimated that the target release rate during the 100-year event will be **3.56 L/s** based on the construction limit of **0.042 ha**.

The proposed site drainage limits are demonstrated on the Post-Development Drainage Area Plan. See CCO-22-1647 - *POST* in **Appendix F** of this report for more details. A summary of the Post-Development Runoff Calculations can be found below.

Table 8: Post-Development Runoff Summary

Drainage Area	Area (ha)	5-year Peak Flow (L/s)	100-year Peak Flow (L/s)	100-year Storage Required (m ³)	100-year Storage Available (m ³)
B1	0.021	0.76	1.26	7.6	7.9
B2	0.021	3.37	6.55	-	-
Total	0.042	4.13	7.81	7.6	7.9

Runoff for area B1 will be stored on the roof of the proposed building addition and restricted using two Watts Accutrol roof drains (or equivalent product) to a maximum release rate of **1.26 L/s** and will provide up to **7.9 m³** of storage.

The flow from Area B2 will be collected via a series of drains. Flow attenuation is not proposed within the system due to the storm connection to the building addition. Area B2 is **0.021 ha** and will direct stormwater at a rate of **6.55 L/s** during a 100-year storm event. Refer to **Appendix G** for detailed calculations and drawing *POST*.

As noted above, the target release rate for the site is **3.56 L/s**. Due to the pathway along the west side of the building, meeting the target release rate is not feasible. As noted in **Table 8**, the combined release rate during the 100-year storm is **7.81 L/s**, a reduction of 62% from existing conditions.

Foundation drainage is proposed to be connected to the existing building drainage systems. The internal servicing layout is to be reviewed by the mechanical engineer.

The remaining site area will be undisturbed.

8.0 EROSION AND SEDIMENT CONTROL

8.1 Temporary Measures

Before construction begins, temporary silt fence, straw bale or rock flow check dams will be installed at all-natural runoff outlets from the property. It is crucial that these controls be maintained throughout construction and inspection of sediment and erosion control will be facilitated by the Contractor or Contract Administration staff throughout the construction period.

Silt fences will be installed where shown on the final engineering plans, specifically along the downstream property limits. The Contractor, at their discretion or at the instruction of the City, Conservation Authority or the Contract Administrator shall increase the quantity of sediment and erosion controls on-site to ensure that the site is operating as intended and no additional sediment finds its way off site. The rock flow, straw bale & silt fence check dams and barriers shall be inspected weekly and after rainfall events. Care shall be taken to properly remove sediment from the fences and check dams as required. Fibre roll barriers are to be installed at all existing curb inlet catch basins and filter fabric is to be placed under the grates of all existing catch basins and manholes along the frontage of the site and any new structures immediately upon installation. The measures for the existing/proposed structures is to be removed only after all areas have been paved. Care shall be taken at the removal stage to ensure that any silt that has accumulated is properly handled and disposed of. Removal of silt fences without prior removal of the sediments shall not be permitted.

Although not anticipated, work through winter months shall be closely monitored for erosion along sloped areas. Should erosion be noted, the Contractor shall be alerted and shall take all necessary steps to rectify the situation. Should the Contractor's efforts fail at remediating the eroded areas, the Contractor shall contact the City and/or Conservation Authority to review the site conditions and determine the appropriate course of action. As the ground begins to thaw, the Contractor shall place silt fencing at all required locations as soon as ground conditions warrant. Please see the *Site Grading, Drainage and Sediment & Erosion Control Plan* for additional details regarding the temporary measures to be installed and their appropriate OPSD references.

8.2 Permanent Measures

It is expected that the Contractor will promptly ensure that all disturbed areas receive topsoil and seed/sod and that grass be established as soon as possible. Any areas of excess fill shall be removed or levelled as soon as possible and must be located a sufficient distance from any watercourse to ensure that no sediment is washed out into the watercourse. As the vegetation growth within the site provides a key component to the control of sediment for the site, it must be properly maintained once established. Once the construction is complete, it will be up to

the landowner to maintain the vegetation and ensure that the vegetation is not overgrown or impeded by foreign objects.

9.0 SUMMARY

- The proposed development incorporates a building addition to the existing building within 330 McLeod Street. The **Site Plan** proposes 30 units to the existing 47 residential units, with street access from McLeod Street. The development is proposed within **0.042 ha** of the site.
- The FUS method estimated fire flow indicated that **9,000 L/min** is required for the proposed development;
- The development is estimated to have a combined peak wet weather flow of **1.29 L/s**;
- Based on City of Ottawa guidelines, the development will be required to attenuate post-development 5 and 100-year flows to the 2-year release rate of **3.56 L/s**. This flow rate is based on the limit of work area of **0.042 ha**;
- To meet the stormwater objectives the development will contain **7.90 m³** of rooftop storage for flow attenuation;
- The proposed release rate during the 100-year storm is **7.81 L/s**, a reduction of 62% from existing conditions; and
- Quality control are not required for this site as the development due to the combined sewer outlet.

10.0 RECOMMENDATION

Based on the information presented in this report, we recommend that City of Ottawa approve this Servicing and Stormwater Management report in support of the proposed development at 330 McLeod Street.

This report is respectfully being submitted for approval.

Regards,

McIntosh Perry Consulting Engineers Ltd.



Alison J. Gosling, P.Eng.
Project Engineer – Land Development
T: 613.714.4629
E: a.gosling@mcintoshperry.com

11.0 STATEMENT OF LIMITATIONS

This report was produced for the exclusive use of Smart Living Properties. The purpose of the report is to assess the existing stormwater management system and provide recommendations and designs for the post-construction scenario that are in compliance with the guidelines and standards from the Ministry of the Environment, Parks and Climate Change, City of Ottawa and local approval agencies. McIntosh Perry reviewed the site information and background documents listed in Section 2.0 of this report. While the previous data was reviewed by McIntosh Perry and site visits were performed, no field verification/measures of any information were conducted.

Any use of this review by a third party, or any reliance on decisions made based on it, without a reliance report is the responsibility of such third parties. McIntosh Perry accepts no responsibility for damages, if any, suffered by any third party as a result of decisions or actions made based on this review.

The findings, conclusions and/or recommendations of this report are only valid as of the date of this report. No assurance is made regarding any changes in conditions subsequent to this date. If additional information is discovered or becomes available at a future date, McIntosh Perry should be requested to re-evaluate the conclusions presented in this report, and provide amendments, if required.

**APPENDIX A
KEY PLAN**

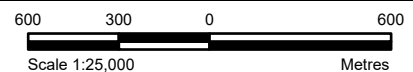


LEGEND

- Site Location
- Local Road
- Major Road
- Railroad
- Watercourse
- Waterbody
- Wooded Area

REFERENCE

GIS data provided by the Ontario Ministry of Natural Resources and Forestry, 2021.



CLIENT:		SMART LIVING PROPERTIES	
PROJECT:		330 MCLEOD STREET, OTTAWA, ON	
TITLE:		SITE LOCATION PLAN	
PROJECT NO: CCO-22-1647		FIGURE:	
Date	Aug., 23, 2021	1	
GIS	EU		
Checked By	AG		

McINTOSH PERRY
 115 Walgreen Road, RR3, Carp, ON K0A1L0
 Tel: 613-836-2184 Fax: 613-836-3742
 www.mcintoshperry.com

APPENDIX B
BACKGROUND DOCUMENTS



Pre-consultation Site Plan Control & Zoning By-Law Amendment Applications

233 Argyle Ave and 330 Mcleod Street

Applicant: Jeremy Silburt

Owner: SMART LIVING ON 233 ARGYLE INC and SMART LIVING ON MCLEOD STREET INC.

Meeting Date: February 10, 2021

Attendees: Applicant Team

Jeremy Silburt, Smart Living Properties
Kris Benes, Architect, Open Plan Architects
Lisa Dalla Rosa, Planner, Fotenn Consultants
Rakan Abushaar, Smart Living Properties
Tamer Abaza, Smart Living Properties

City of Ottawa

Kimberley Baldwin, Development Review Planner
Christopher Moise, Urban Designer
John Wu, Civil Engineering
Luis Juarez, Heritage Planner
Mark Richardson, Forester
Shukufa Sultonmamad, Planning Assistant

Centretown Citizens Community Association

Jack Hanna

Meeting Notes & Comments

Proposal: To extend the current buildings on 233 Argyle Ave and 330 McLeod St toward the rear of the lots.

- 233 Argyle Ave – Proposal to construct a 3-storey rear yard addition to the existing 3-storey office building; addition will contain 13 bachelor residential units.
- 330 McLeod St – Proposal to construct a rear yard addition to the existing 5-storey rooming house; addition will contain 30 additional rooming units.

Development Review Processes (File lead: Kimberley Baldwin)

- Zoning By-law Amendment application
 - We could look at these two developments under one Zoning Bylaw amendment application.
- Site Plan Control Applications
 - We advise filing two site plan control applications, one for each property
 - 330 McLeod St – Site Plan Complex, Manager Approval, Public Consultation
 - 233 Argyle Ave – Site Plan application type to be confirmed.
 - What will be the proposed size this building post-development?

Heritage Process (Fie lead: Luis Juarez)

- The two additions will not function as a single development, and therefore a heritage permit application for each new addition is requested.
- The 'Council-level authority – Minor Application' type and fee of \$ \$2,243.00 is applicable for each addition and must be provided with the heritage permit application submission.

Application Requirements

- Application Form and Payment;
- Detailed description of the Proposed Work including total GFA stats and proposed restoration work;
- Site Plan and Landscape Plan;
- Coloured Elevations – measured, with materials indicated, including the windows, and heights of adjacent buildings illustrated; and,
- A coloured streetscape rendering demonstrating the visual impact, if any, of the additions on the contributing property's streetscape (along Argyle Avenue).
- Based on the proposal, a Cultural Heritage Impact Statement will not be necessary for this application. A description and rationale should be provided to demonstrate how the addition meets the Centretown HCD Guidelines and the Centretown Community Development Plan Heritage policies (Section 6.5) from the Applicant's perspective.

Engineering Comments - John Wu

- This site is located at the combined sewer areas, it has to follow the combined sewer area storm water management requirement, and the ECA will be required. Typical storm water management will require control its storm water on site, using 2 year's storm and a C value of 0.4 to control up to 100 years' storm event.
- We also need a servicing study,
- Geotechnical study is required, phase one ESA will be required, possible Phase two ESA may be required depending on the result of phase one ESA study.
- A noise study may be required, it is within 100 meters to Bank Street, and within 500 meters from Highway 417.

Planning Comments – Kimberley Baldwin

- General comment is that we'll primarily be assessing each addition individually, as they appear as separate projects with no shared elements.
 - The applicant indicated that a shared bicycle storage facility is proposed in 330 Mcleod, to be used by both properties
 - Planning staff expressed a preference to see bicycle, waste storage provided for each individual property.
- Properties are designated General Urban Area in the Official Plan
 - Support for intensification in the General Urban Area where it complements the existing pattern and scale of development and planned function of the area.
 - Staff assess how new development enhances and builds upon desirable established patterns of built form and open spaces
 - There is an opportunity here to extend the existing soft landscape buffer that runs along the rear of adjacent properties.
 - It is also important to maintain adequate open space between properties, especially at the rear.
 - General Urban policies look how new development contributes to the balance of housing types and tenures to provide a full range of housing for a variety of demographic

profiles. In that regard, we encourage a mix of unit sizes, rather than all bachelor and rooming units.

- The applicant noted that buildings containing rooming units are not allowed to provide a mix of units within the same building.
- Properties are also located within the *Centretown Secondary Plan*
 - Central Character Area - 'Residential Mixed Use Designation'
 - Low-rise apartment buildings are permitted uses in this designation
 - Commercial uses are limited to the first two floors of a building [check that the offices currently on the 3rd floor of the 233 Argyle were legally established]
 - 233 Argyle is identified as a Heritage Building in this plan.
- Zoning – Residential Fourth Density Zone, Subzone UD, Urban Exception 479 with a Heritage Overlay and Mature Neighbourhoods Overlay. [R4UD(479)]
 - From a zoning perspective, the built form of both additions suggests an overdevelopment of these lots.
 - Both sites are deficient in providing adequate rear yard and side yard setbacks.
 - Space between the proposed additions should not be viewed as a shared space. As such please provide appropriate rear yard setbacks on each property.
 - Greater rear yard setbacks would the following benefits:
 - Allow for existing trees at the rear to be preserved and new soft landscaping to be established, creating a desirable amenity areas at grade for both future tenants as well as for the neighbouring properties in this block.
 - Allow for more of the units to be oriented towards the rear, rather than the side yards, improving the livability of each unit.
 - Respect privacy and provide adequate separation from existing amenity areas (balconies) on adjacent properties
- *Waste Management*

233 Argyle:

- The adjacent apartment building to the east cantileavers over the driveway. There is also a short retaining wall at the side of the lot. These existing characteristics would present challenges for managing waste (with a large vehicle) on site.

330 Mcleod

- Narrow driveway, which could present challenges to on-site waste management
- How many existing rooms? Where is the existing waste storage for those units?
- In the planning rationale for each development, please look at the needs of existing and proposed uses and demonstrate that an adequate waste management plan is provided.
- Amenity area and bicycle parking – Similarly, existing units should be taken into consideration in designing the amenity area and bicycle parking requirements for each building.
- If no vehicular parking is provided, demonstrate how alternative modes of transportation are being provided [eg. provide more bicycle parking storage, ideally at a 1:1 ratio (1 unit=1 bicycle parking space)]

Urban Design Comments- Christopher Moise

- This proposal exists within one of the City's Design Priority Areas and must attend the City's UDRP. Please consult the City's website for details regarding the UDRP schedule;

Comments/questions/concerns:

- Rear yard set-back/Block pattern reduction is a major concern. It would be helpful to illustrate the line of required set-back to show how much of that is being encroached upon by this proposal. Thirty percent of the lot is required. We recommend that the full rear yard set-back be provided to maintain the block pattern, access to day-light for the existing and future residents and for the residents of neighbouring buildings;
- The proposed units rely on side yards for light and views and when replicability of this proposal is considered (when neighbouring lots proposal similar reductions in set-backs), the resulting condition may further compromise exposure to day-light and negatively impact the proposed buildings;
- Roof top amenity: we question the quality of space proposed and should be further illustrated as over-look and privacy issues arise when adjacent to neighbouring mid and high-rise built form;
- Amenity provided at grade and in the rear yard is important to keep the middle of the block open for access to day-light and views and for new landscaping for this and adjacent buildings;
- Shared uses between buildings is concerning as each property is to provide required bike parking (to support relief from vehicular parking), garbage storage, amenity, etc. especially if ownership of the properties changes in the future;
- No concern about removing the at grade parking, but would recommend that the existing building green the parking lot and provide amenity and soft landscaping at grade instead of asphalt or built form;
- Once the footprint and massing of the proposal has been resolved then the issues of materiality and contextual relationships can be further addressed;
- A Design Brief is a required submittal for all Site Plan/Re-zoning applications. Please see the Design Brief Terms of Reference provided.

This is an exciting project in an area full of potential. We look forward to helping you achieve its goals with the highest level of design resolution. We are happy to assist and answer any questions regarding the above. Good luck.

Heritage Planning Comments – Luis Juarez

The subject properties are located within the Centretown Heritage Conservation District (HCD) and are designated under Part V of the *Ontario Heritage Act*.

- 233 Argyle Avenue is a category 2 property and is considered a 'contributing' property to the cultural heritage value of the Centretown HCD, whereas 330 McLeod Street is a category 4 property and is considered a 'non-contributing' property.
- As per the design brief submitted for the Pre-Consultation meeting, the proposed works include an extension of both buildings towards the rear of the lots for a total of 33 additional residential units (13 on Argyle, and 20 on McLeod).
- A new Centretown Heritage Conservation District Plan is being drafted. The application may be impacted by the new plan and the application will be subject to either the new or the old plan depending on the applications date of submission.
- Staff have provided preliminary comments based on the submitted materials. Should additional drawings or details be provided or should the design change, Staff may require further review and provide additional comments at that time.

Preliminary Comments on the Proposal

- Please review the Centretown HCD Plan guidelines, Section 3.7 of the Centretown Secondary Plan, and Section 6.5 of the Centretown GDP for direction on how additions to

these properties can be compatible within the context of the HCD (Centretown HCD guidelines attached).

- Heritage Staff are conceptually supportive of infill development on these properties. Notwithstanding, Heritage Staff mirror Development Review and Urban Design comments related to the reduction in massing and proper provision of amenity space for each addition to ensure that the proposed infill development is compatible with the character of the HCD.

Massing

- The additions should be distinguishable, secondary and complimentary to the existing buildings.
- The proposed rooftop utilities and/or mechanical penthouse on the Argyle addition exceeds the height of the existing roofline. The applicant will need to demonstrate if additions have a visual impact on the contributing property's streetscape (along Argyle Avenue).

Conservation and Maintenance of Contributing Properties

- Staff encourage restoration of existing heritage attributes for 233 Argyle Avenue as part of this application. Please refer to Section VII.5.3 of the HCD guidelines (The Conservation and Restoration of Heritage Residential Properties) for guidance on proper restoration of building elements.
- Examples of heritage restoration projects for this site include but are not limited to the restoration of wood features including the second-floor balcony and third floor dormer; windows, soffit, and cornice.
- Restoration work may be eligible for a heritage restoration grant of up to \$10,000 (available on a matching basis). Refer to the [Built Heritage Funding page](#) for information on the City's grant program and to review the program guidelines. Heritage grants are available even if the Applicant does not proceed with the proposed development.

Cladding

- The HCD guidelines suggest brick veneer as the primary cladding for infill development, however given that the additions will not be visible from the street, the applicant could consider using a type of horizontal cladding. Possible materials include wood clapboard or composite cladding (i.e. fibre cement board with paint finish) that is distinct but complementary to the original brick of the two existing buildings.

Forester Comments – Mark Richardson

TCR requirements:

- Tree Conservation Report (TCR) must be supplied for review along with the suite of other plans/reports required by the City
 - an approved TCR is a requirement of Site Plan approval.
- As of January 1 2021, any removal of privately or publicly (City) owned trees 10cm or larger in diameter requires a tree permit issued under the Tree Protection Bylaw (Bylaw 2020 – 340); the permit will be based on an approved TCR and made available at or near plan approval.
- The Planning Forester from Planning and Growth Management as well as foresters from Forestry Services will review the submitted TCR
 - If tree removal is required, both municipal and privately-owned trees will be addressed in a single permit issued through the Planning Forester
 - Compensation may be required for city owned trees – if so, it will need to be paid prior to the release of the tree permit
- the TCR must list all trees on site by species, diameter and health condition
- the TCR must list all trees on adjacent sites if they have a critical root zone that extends onto the development site
- If trees are to be removed, the TCR must clearly show where they are, and document the reason they cannot be retained

- All retained trees must be shown and all retained trees within the area impacted by the development process must be protected as per City guidelines available at [Tree Protection Specification](#) or by searching [Ottawa.ca](#)
 - securities may be required for retained trees
 - the location of tree protection fencing must be shown on a plan
 - show the critical root zone of the retained trees
 - if excavation will occur within the critical root zone, please show the limits of excavation
- the City encourages the retention of healthy trees; if possible, please seek opportunities for retention of trees that will contribute to the design/function of the site.
- For more information on the process or help with tree retention options, contact Mark Richardson mark.richardson@ottawa.ca or on [City of Ottawa](#)

LP tree planting requirements:

For additional information on the following please contact Tracy.Smith@Ottawa.ca

Minimum Setbacks

- Maintain 1.5m from sidewalk or MUP/cycle track.
- Maintain 2.5m from curb
- Coniferous species require a minimum 4.5m setback from curb, sidewalk or MUP/cycle track/pathway.
- Maintain 7.5m between large growing trees, and 4m between small growing trees. Park or open space planting should consider 10m spacing.
- Adhere to Ottawa Hydro’s planting guidelines (species and setbacks) when planting around overhead primary conductors.

Tree specifications

- Minimum stock size: 50mm tree caliper for deciduous, 200cm height for coniferous.
- Maximize the use of large deciduous species wherever possible to maximize future canopy coverage
- Tree planting on city property shall be in accordance with the City of Ottawa’s Tree Planting Specification; and include watering and warranty as described in the specification (can be provided by Forestry Services).
- Plant native trees whenever possible
- No root barriers, dead-man anchor systems, or planters are permitted.
- No tree stakes unless necessary (and only 1 on the prevailing winds side of the tree)

Hard surface planting

- Curb style planter is highly recommended
- No grates are to be used and if guards are required, City of Ottawa standard (which can be provided) shall be used.
- Trees are to be planted at grade

Soil Volume

- Please ensure adequate soil volumes are met:

Tree Type/Size	Single Tree Soil Volume (m3)	Multiple Tree Soil Volume (m3/tree)
Ornamental	15	9
Columnar	15	9
Small	20	12
Medium	25	15
Large	30	18

Conifer	25	15
---------	----	----

Please note that these soil volumes are not applicable in cases with Sensitive Marine Clay.

Sensitive Marine Clay

- Please follow the City's 2017 Tree Planting in Sensitive Marine Clay guidelines

Community Association Comments (Jack Hanna, CCCA)

- In favour of density, as Centretown is in desperate need in affordable units
- Maintaining heritage is also good
- If vehicular parking is not provided, and future tenants won't be using cars, what will they be using? These proposal are deficient in providing bicycle parking
- Providing no vehicular parking will probably be a concern for surrounding community.
- Consider providing a car sharing space
- We want more units, but developers have a responsibility to give their tenants some nice amenity space on site. Rooftop amenity not a desirable approach.
- The community will look at Tree Conservation Report very closely
- The walkway to access the 330 McLeod units appears to be a bit of a canyon. Will the people using this walkway be walking past windows?
- Please hold a meeting with community to discuss building materials
- Consider providing space on site for e-scooters, which are becoming a popular alternate method of transportation downtown.

Application Submission Information

For information on Site Plan Control Thresholds under the Site Plan Control By-law, please visit: https://documents.ottawa.ca/sites/documents/files/siteplan_thresholds_en.pdf

For information on Applications, including fees, please visit: <https://ottawa.ca/en/city-hall/planning-and-development/information-developers/development-application-review-process/development-application-submission/fees-and-funding-programs/development-application-fees>

The application processing timeline generally depends on the quality of the submission. For more information on standard processing timelines, please visit: <https://ottawa.ca/en/city-hall/planning-and-development/information-developers/development-application-review-process/development-application-submission/development-application-forms#site-plan-control>

Prior to submitting a formal application, it is recommended that you pre-consult with the Ward Councillor.

Application Submission Requirements

For information on the preparation of Studies and Plans and the City's Planning and Engineering requirements, please visit: <https://ottawa.ca/en/city-hall/planning-and-development/information->

[developers/development-application-review-process/development-application-submission/guide-preparing-studies-and-plans](#)

Please provide electronic copy (PDF) of all plans and studies required.

All plans and drawings must be produced on A1-sized paper and folded to 21.6 cm x 27.9 cm (8½" x 11").

Note that many of the plans and studies collected with this application must be signed, sealed and dated by a qualified engineer, architect, surveyor, planner or designated specialist.

APPLICANT'S STUDY AND PLAN IDENTIFICATION LIST

Legend: **S** indicates that the study or plan is required with application submission.

A indicates that the study or plan may be required to satisfy a condition of approval/draft approval.

For information and guidance on preparing required studies and plans refer [here](#):

S/A	Number of copies	ENGINEERING		S/A	Number of copies
S	15	1. Site Servicing Plan	2. Site Servicing Study / Assessment of Adequacy of Public Services	<input type="checkbox"/>	3
S	15	3. Grade Control and Drainage Plan	4. Geotechnical Study / Slope Stability Study	S	3
<input type="checkbox"/>	2	5. Composite Utility Plan	6. Groundwater Impact Study	<input type="checkbox"/>	3
<input type="checkbox"/>	3	7. Servicing Options Report	8. Wellhead Protection Study	<input type="checkbox"/>	3
<input type="checkbox"/>	9	9. Transportation Impact Assessment (TIA)	10. Erosion and Sediment Control Plan / Brief	S	3
S	3	11. Storm water Management Report / Brief	12. Hydro geological and Terrain Analysis	<input type="checkbox"/>	3
<input type="checkbox"/>	3	13. Hydraulic Water main Analysis	14. Noise / Vibration Study	S	3
<input type="checkbox"/>	PDF only	15. Roadway Modification Functional Design	16. Confederation Line Proximity Study	<input type="checkbox"/>	3

S/A	Number of copies	PLANNING / DESIGN / SURVEY		S/A	Number of copies
<input type="checkbox"/>	15	17. Draft Plan of Subdivision	18. Plan Showing Layout of Parking Garage	<input type="checkbox"/>	2
<input type="checkbox"/>	5	19. Draft Plan of Condominium	20. Planning Rationale	S	3
S	15	21. Site Plan	22. Minimum Distance Separation (MDS)	<input type="checkbox"/>	3
<input type="checkbox"/>	15	23. Concept Plan Showing Proposed Land Uses and Landscaping	24. Agrology and Soil Capability Study	<input type="checkbox"/>	3
<input type="checkbox"/>	3	25. Concept Plan Showing Ultimate Use of Land	26. Cultural Heritage Impact Statement	<input type="checkbox"/>	3
S	15	27. Landscape Plan (can combine with site plan)	28. Archaeological Resource Assessment Requirements: S (site plan) A (subdivision, condo)	<input type="checkbox"/>	3
S	2	29. Survey Plan	30. Shadow Analysis	<input type="checkbox"/>	3
S	3	31. Architectural Building Elevation Drawings (dimensioned)	32. Design Brief (includes the Design Review Panel Submission Requirements)	S	Available online
<input type="checkbox"/>	3	33. Wind Analysis		<input type="checkbox"/>	

S/A	Number of copies	ENVIRONMENTAL		S/A	Number of copies
S	3	34. Phase 1 Environmental Site Assessment	35. Impact Assessment of Adjacent Waste Disposal/Former Landfill Site	<input type="checkbox"/>	3
S	3	36. Phase 2 Environmental Site Assessment (depends on the outcome of Phase 1)	37. Assessment of Landform Features	<input type="checkbox"/>	3
<input type="checkbox"/>	3	38. Record of Site Condition	39. Mineral Resource Impact Assessment	<input type="checkbox"/>	3
S	3	40. Tree Conservation Report	41. Environmental Impact Statement / Impact Assessment of Endangered Species	<input type="checkbox"/>	3
<input type="checkbox"/>	3	42. Mine Hazard Study / Abandoned Pit or Quarry Study	43. Integrated Environmental Review (Draft, as part of Planning Rationale)	<input type="checkbox"/>	3

S/A	Number of copies	ADDITIONAL REQUIREMENTS		S/A	Number of copies
S	1	44. Applicant's Public Consultation Strategy (may be provided as part of the Planning Rationale)	45. Site Lighting Plan and Certification Letter	S	3

Meeting Date: February 10, 2021

Application Type: *Site Plan Control / Zoning By-Law Amendment*

File Lead (Assigned Planner): Kimberley Baldwin

Infrastructure Approvals Project Manager: John Wu

Site Address (Municipal Address): 233 Argyle Ave and 330 Mcleod Street
 4 5

*Preliminary Assessment: 1 2 3

*One (1) indicates that considerable major revisions are required before a planning application is submitted, while five (5) suggests that proposal appears to meet the City's key land use policies and guidelines. **This assessment is purely advisory and does not consider technical aspects of the proposal or in any way guarantee application approval.**

It is important to note that the need for additional studies and plans may result during application review. If following the submission of your application, it is determined that material that is not identified in this checklist is required to achieve complete application status, in accordance with the Planning Act and Official Plan requirements, the Planning, Infrastructure and Economic Development Department will notify you of outstanding material required within the required 30 day period. Mandatory pre-application consultation will not shorten the City's standard processing timelines, or guarantee that an application will be approved. It is intended to help educate and inform the applicant about submission requirements as well as municipal processes, policies, and key issues in advance of submitting a formal development application. This list is valid for one year following the meeting date. If the application is not submitted within this timeframe the applicant must again pre-consult with the Planning, Infrastructure and Economic Development Department.

330 MCLEOD STREET

EXISTING USE:	ROOMING HOUSE (48 ROOMS EXISTING)
PROPOSED USE:	ROOMING HOUSE (TOTAL 78 ROOMS, 48 + 30 NEW)
NUMBER OF STOREYS:	4 + BASEMENT
PROPOSED BUILDING FOOTPRINT:	675.6 m ²
PROPOSED NEW FOOTPRINT AREA:	211.2 m ²

330 MCLEOD STREET

ZONING DATA - R4UD(479)

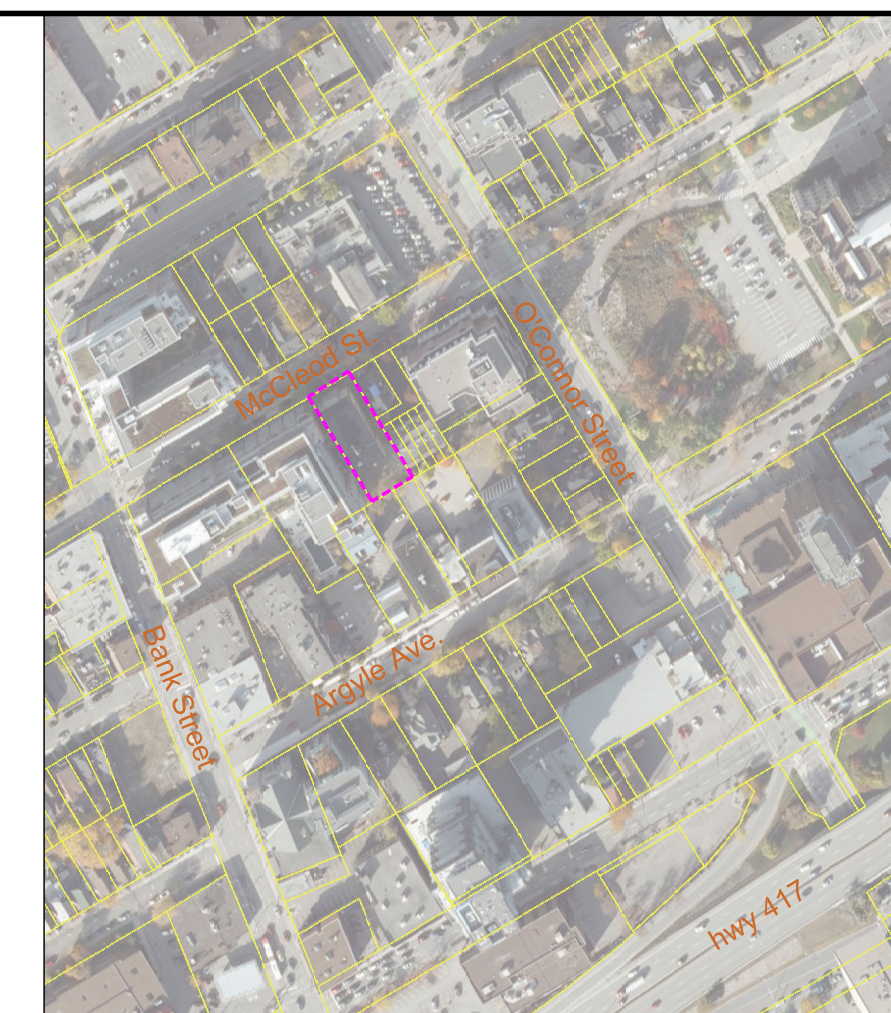
MECHANISM	REQUIRED	PROVIDED	NOTES
LOT WIDTH:	15.0	20.12	
FRONT YARD:	4.5	4.5	
SIDE YARD:	1.5	0.3 & 3.7	PERTAINS TO THE ADDITION ONLY
REAR YARD:	15.4 m	4.2 m	MIN. REAR YARD IS 30% OF LOT DEPTH WHICH MUST COMPRISE AT LEAST 25% OF THE AREA OF THE LOT
BUILDING HEIGHT:	14.5 m	15.0 m	
LOT AREA (MIN.):	450.0 m ²	1058.8 m ²	
LANDSCAPED AREA:	30%	31%	
SOFT LANDSCAPE AREA:	50%	60% AGGREGATED AREA COMPLIES	MUST COMPRISE AT LEAST ONE AGGREGATED RECT ANGULAR AREA OF AT LEAST 25 m ² & WHOSE LONGER DIMENSION IS NOT MORE THAN TWICE ITS SHORTER DIMENSION, FOR THE PURPOSE OF TREE PLANTING
NO. OF BEDROOMS:	25% DU MIN. TO BE 2 BEDROOMS	100% DU ARE BACHELOR SUITES	ZONING CHANGE REQUIRED
MAX PROJECTION OF: EXIT STAIRS INTO R.Y.	2.2 m	N/A	
AMENITY AREA:	270 m ² (7.5 m ² / RU 1ST 8, 3 m ² / RU IN EXCESS OF 8)	87 m ² AT GRADE + 250 m ² ROOF TOP AMENITY	
PRINCIPAL ENTRANCE:	AT LEAST 1 PRINCIPAL ENTRY TO A GND. FLR. UNIT OR COMMON CORR. AT FRONT FACADE	PRINCIPAL ENTRANCE REMAINS THE SAME THROUGH EXISTING BUILDING FROM MCLEOD STREET	

CAR PARKING:	REQUIRED	PROVIDED	NOTES
MIN. PARKING SPACES: TENANTS	17 (AFTER 1ST 12 RU, 0.25 / RU)	0	
MIN. PARKING SPACES: VISITORS	N/A	N/A	
BICYCLE PARKING:	20 (0.25 / RU)	36 STACKED	

WASTE MANAGEMENT

GARBAGE:	18 CY (0.231 CY / DU)	18 CY (9 x 2 CY FEL CONT.)
GMP:	1.4 CY (0.018 CY / DU)	2 CY (1 x 2 CY FEL CONT.)
FIBER:	4.8 CY (0.062 CY / DU)	6 CY (3 x 2 CY FEL CONT.)
ORGANIC:	2 240L BIN (1 240L BIN / 50 DU)	2 240L BIN

WASTE MANAGEMENT IS BASED ON A PRIVATE COLLECTION SERVICE. COLLECTION FREQUENCY SHALL SUIT THE VOLUME GENERATED AND STORAGE CAPACITY.



CLIENT :

SMART LIVING ON MCLEOD INC.
C/O SMART LIVING PROPERTIES
226 ARGYLE STREET,
OTTAWA, ON K2P 1B9

rev. / issue	description	date
01	ISSUED FOR COORDINATION	15 JUL 2021

THE ARCHITECT WAIVES ANY AND ALL RESPONSIBILITY AND LIABILITY FOR PROBLEMS WHICH ARISE FROM FAILURE TO FOLLOW THESE PLANS, SPECIFICATIONS, AND THE DESIGN INTENT THEY CONVEY, OR FOR PROBLEMS WHICH ARISE FROM OTHERS' FAILURE TO OBTAIN AND/OR FOLLOW THE ARCHITECT'S GUIDANCE WITH RESPECT TO ANY ERRORS, OMISSIONS, INCONSISTENCIES, AMBIGUITIES OR CONFLICTS WHICH ARE ALLEGED.

IT IS THE RESPONSIBILITY OF THE APPROPRIATE CONTRACTOR TO CHECK AND VERIFY ALL DIMENSIONS ON SITE AND PROMPTLY REPORT ALL ERRORS AND/OR OMISSIONS TO THE CONSULTANT BEFORE WORK COMMENCES.

ALL WORK IS TO FOLLOW THE OBC 2012 AND ANY OTHER APPLICABLE CODES AND REGULATIONS.

DO NOT SCALE DRAWINGS.

THESE DRAWINGS ARE NOT TO BE USED FOR CONSTRUCTION UNLESS A BUILDING PERMIT IN RESPECT OF THIS PROJECT HAS BEEN GRANTED BY AUTHORITIES AND THEY ARE ISSUED FOR CONSTRUCTION.

COPYRIGHT RESERVED.

professional stamp

project north

Kristopher D. Benes, OAA, MRAIC, LEED AP

OPA open plan architects inc.
architecture | interiors | concepts

2305 HILLARY AVE. | OTTAWA | ON | K1H 7J2
613.883.5090 | info@openplan.ca

project

330 MCLEOD ST. ADDITION
OTTAWA, ON

drawing

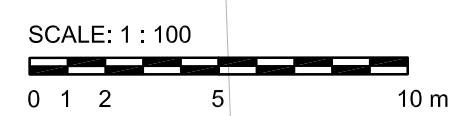
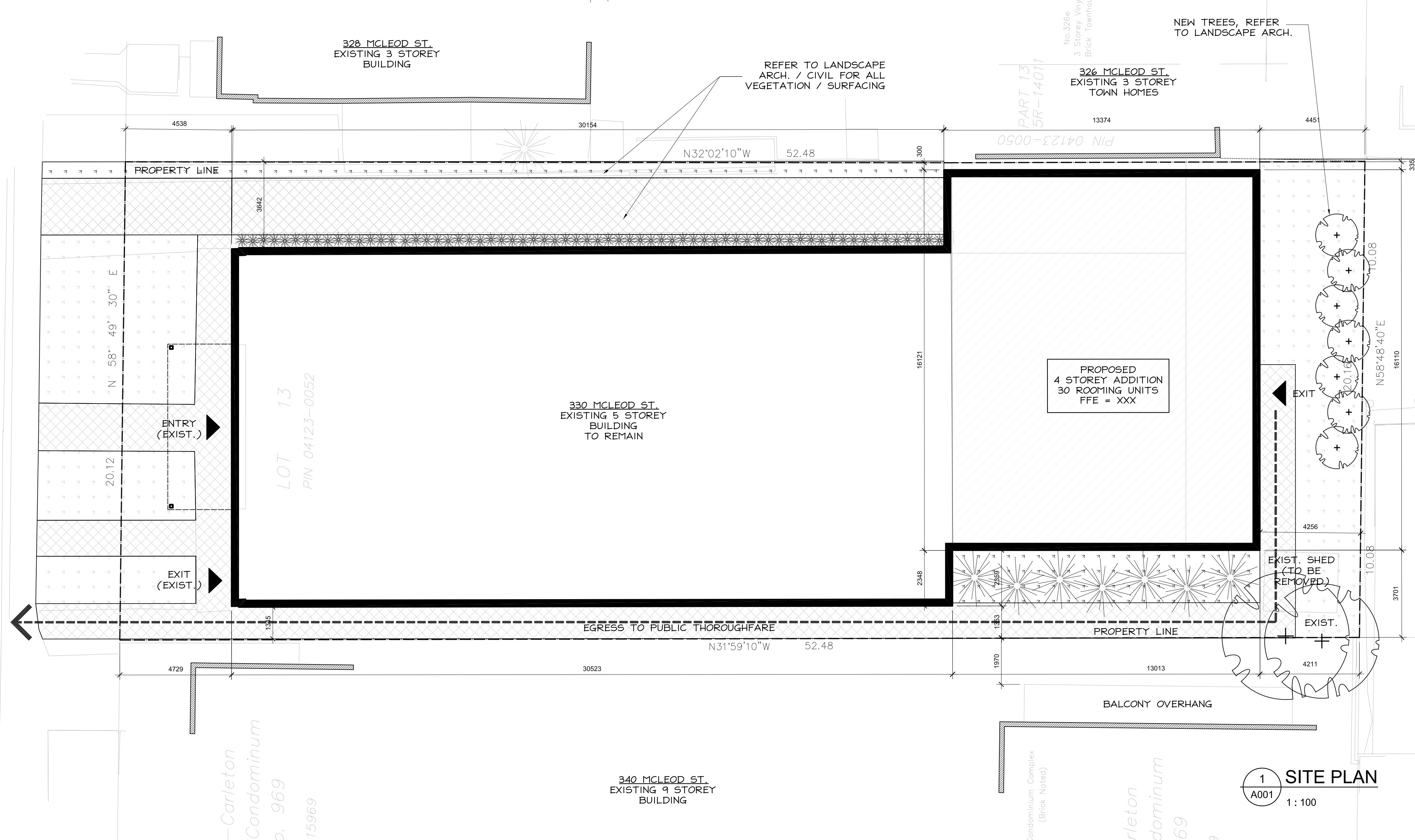
SITE PLAN

drawn	KDB	date	MAY-2021
approved	KDB	revision	0
project no.	2009	scale	AS SHOWN
drawing no.			

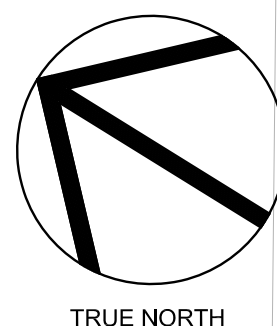
A001

LEGEND:

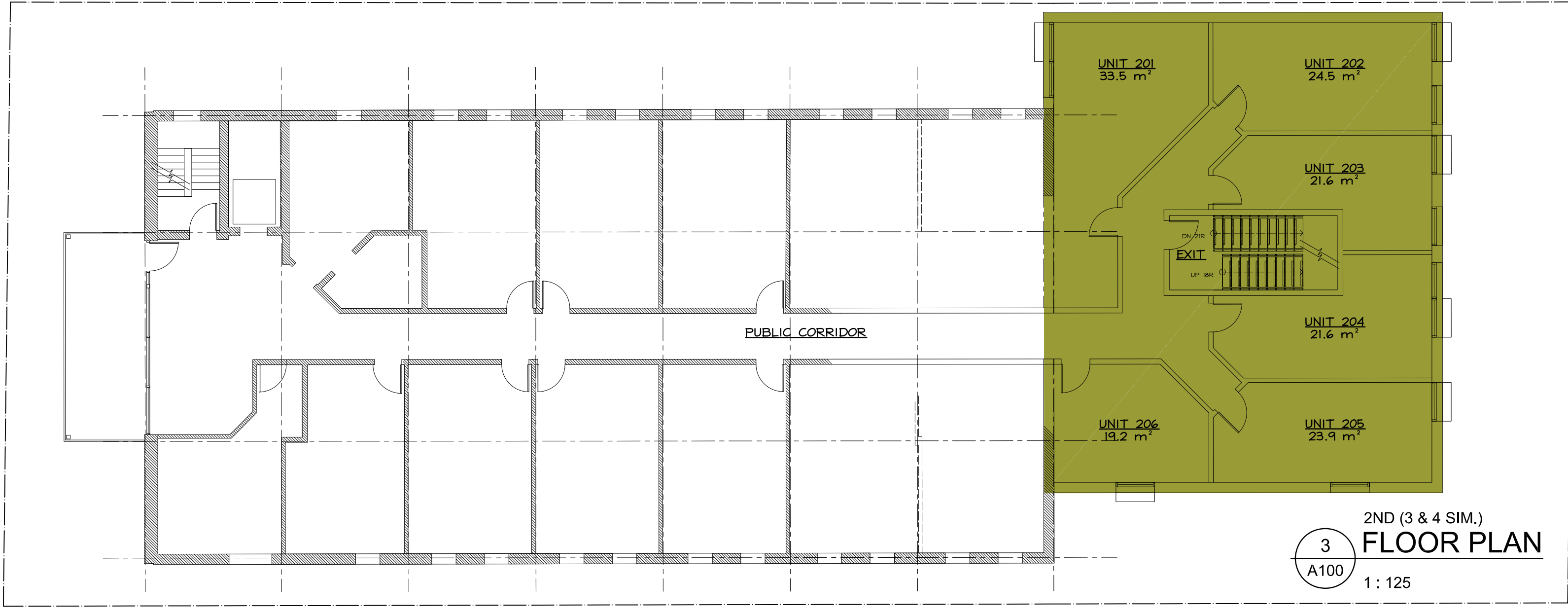
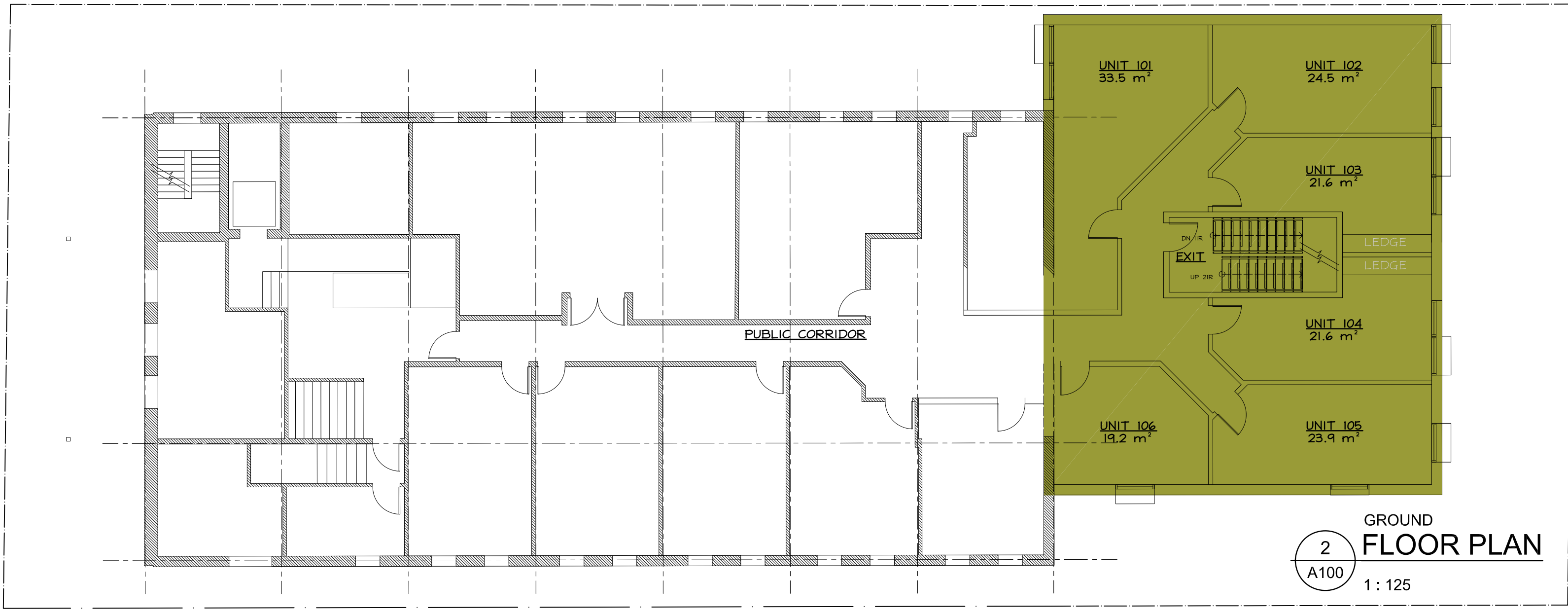
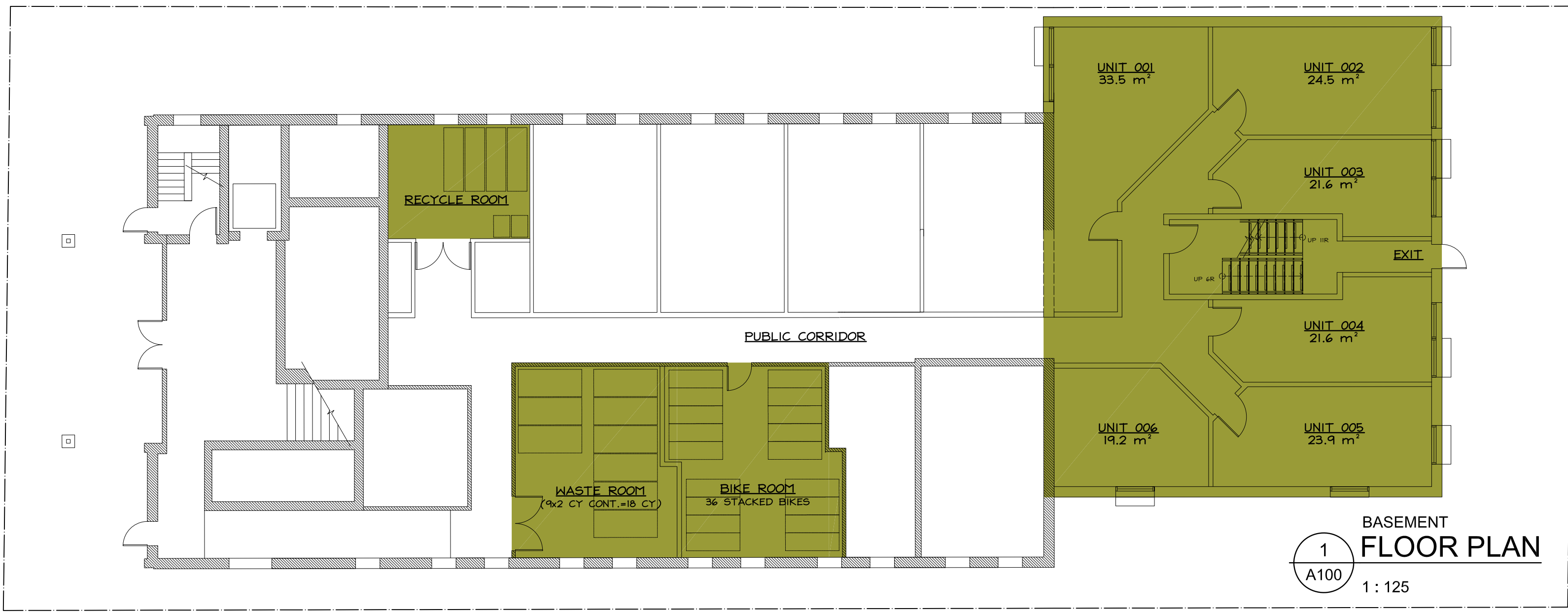
- EXISTING BUILDING
- PROPOSED ADDITION
- GRASS
- CONCRETE
- PAVERS
- SHRUB
- DECIDUOUS TREE
- ENTRANCE/EXIT



SURVEY INFORMATION TAKEN FROM SURVEY PREPARED BY ANNIS O'SULLIVAN VOLLEBECK LTD., DATED JULY 28, 2020, PROJECT NO. 20643-20.



1 SITE PLAN
A001
1:100



CLIENT :
SMART LIVING ON MCLEOD INC.
C/O SMART LIVING PROPERTIES
226 ARGYLE STREET,
OTTAWA, ON K2P 1B9

rev. / issue	description	date
02	ISSUED FOR COORDINATION	15 JUL 2021
01	ISSUED FOR CLIENT INPUT	14 JUL 2021

THE ARCHITECT WAIVES ANY AND ALL RESPONSIBILITY AND LIABILITY FOR PROBLEMS WHICH ARISE FROM FAILURE TO FOLLOW THESE PLANS, SPECIFICATIONS, AND THE DESIGN INTENT THEY CONVEY, OR FOR PROBLEMS WHICH ARISE FROM OTHERS' FAILURE TO OBTAIN AND/OR FOLLOW THE ARCHITECT'S GUIDANCE WITH RESPECT TO ANY ERRORS, OMISSIONS, INCONSISTENCIES, AMBIGUITIES OR CONFLICTS WHICH ARE ALLEGED.

IT IS THE RESPONSIBILITY OF THE APPROPRIATE CONTRACTOR TO CHECK AND VERIFY ALL DIMENSIONS ON SITE AND PROMPTLY REPORT ALL ERRORS AND/OR OMISSIONS TO THE CONSULTANT BEFORE WORK COMMENCES.

ALL WORK IS TO FOLLOW THE OBC 2012 AND ANY OTHER APPLICABLE CODES AND REGULATIONS.

DO NOT SCALE DRAWINGS.

THESE DRAWINGS ARE NOT TO BE USED FOR CONSTRUCTION UNLESS A BUILDING PERMIT IN RESPECT OF THIS PROJECT HAS BEEN GRANTED BY AUTHORITIES AND THEY ARE ISSUED FOR CONSTRUCTION.

COPYRIGHT RESERVED.

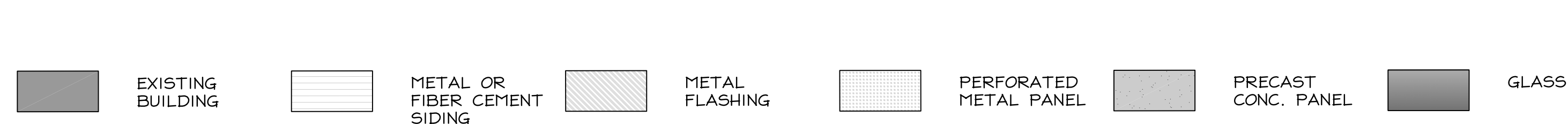
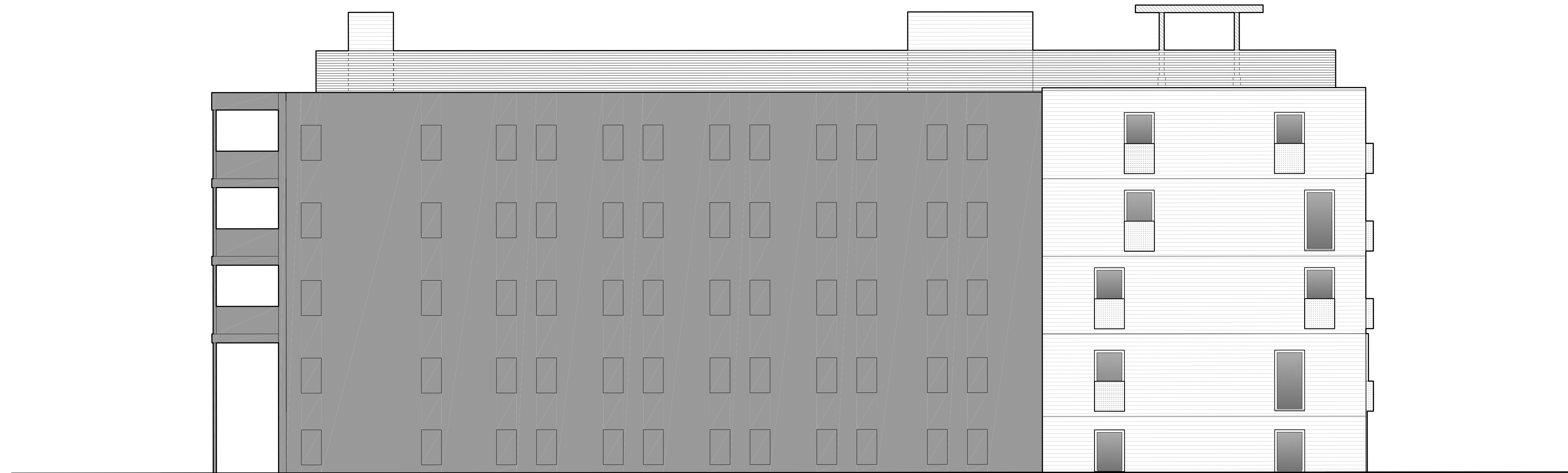
professional stamp
project north

Kristopher D. Benes, OAA, MRAIC, LEED AP
OPA open plan architects inc.
architecture | interiors | concepts
2305 HILLARY AVE. | OTTAWA | ON | K1H 7J2
613.883.5090 | info@openplan.ca

project
330 MCLEOD ST. ADDITION
OTTAWA, ON

drawing
FLOOR PLANS

drawn	KDB	date	MAY-2021
approved	KDB	revision	△
project no.	2009	scale	AS SHOWN
drawing no.	A100		



WEST SIDE
1
 A200
ELEVATION
 1 : 100



EAST SIDE
2
 A200
ELEVATION
 1 : 100

CLIENT :
 SMART LIVING ON MCLEOD INC.
 C/O SMART LIVING PROPERTIES
 226 ARGYLE STREET,
 OTTAWA, ON K2P 1B9

rev. / issue	description	date
01	ISSUED FOR COORDINATION	15 JUL 2021

THE ARCHITECT WAIVES ANY AND ALL RESPONSIBILITY AND LIABILITY FOR PROBLEMS WHICH ARISE FROM FAILURE TO FOLLOW THESE PLANS, SPECIFICATIONS, AND THE DESIGN INTENT THEY CONVEY, OR FOR PROBLEMS WHICH ARISE FROM OTHERS' FAILURE TO OBTAIN AND/OR FOLLOW THE ARCHITECT'S GUIDANCE WITH RESPECT TO ANY ERRORS, OMISSIONS, INCONSISTENCIES, AMBIGUITIES OR CONFLICTS WHICH ARE ALLEGED.

IT IS THE RESPONSIBILITY OF THE APPROPRIATE CONTRACTOR TO CHECK AND VERIFY ALL DIMENSIONS ON SITE AND PROMPTLY REPORT ALL ERRORS AND/OR OMISSIONS TO THE CONSULTANT BEFORE WORK COMMENCES.

ALL WORK IS TO FOLLOW THE OBC 2012 AND ANY OTHER APPLICABLE CODES AND REGULATIONS.
 DO NOT SCALE DRAWINGS.

THESE DRAWINGS ARE NOT TO BE USED FOR CONSTRUCTION UNLESS A BUILDING PERMIT IN RESPECT OF THIS PROJECT HAS BEEN GRANTED BY AUTHORITIES AND THEY ARE ISSUED FOR CONSTRUCTION.
 COPYRIGHT RESERVED.

professional stamp	project north
--------------------	---------------

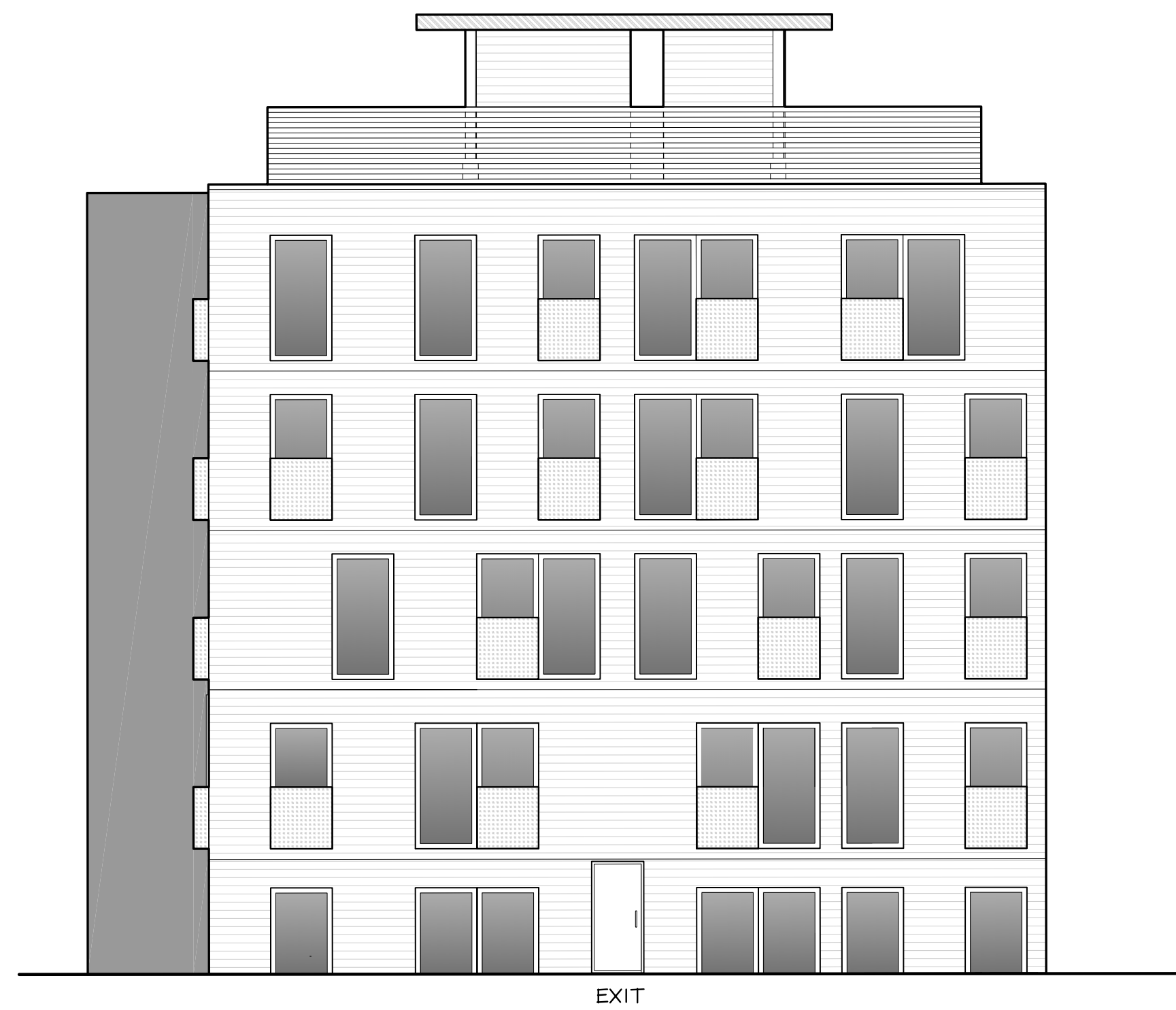
Kristopher D. Benes, OAA, MRAIC, LEED AP
OPA open plan architects inc.
 architecture | interiors | concepts
 2305 HILLARY AVE. | OTTAWA | ON | K1H 7J2
 613.883.5090 | info@openplan.ca

project
330 MCLEOD ST. ADDITION
 OTTAWA, ON

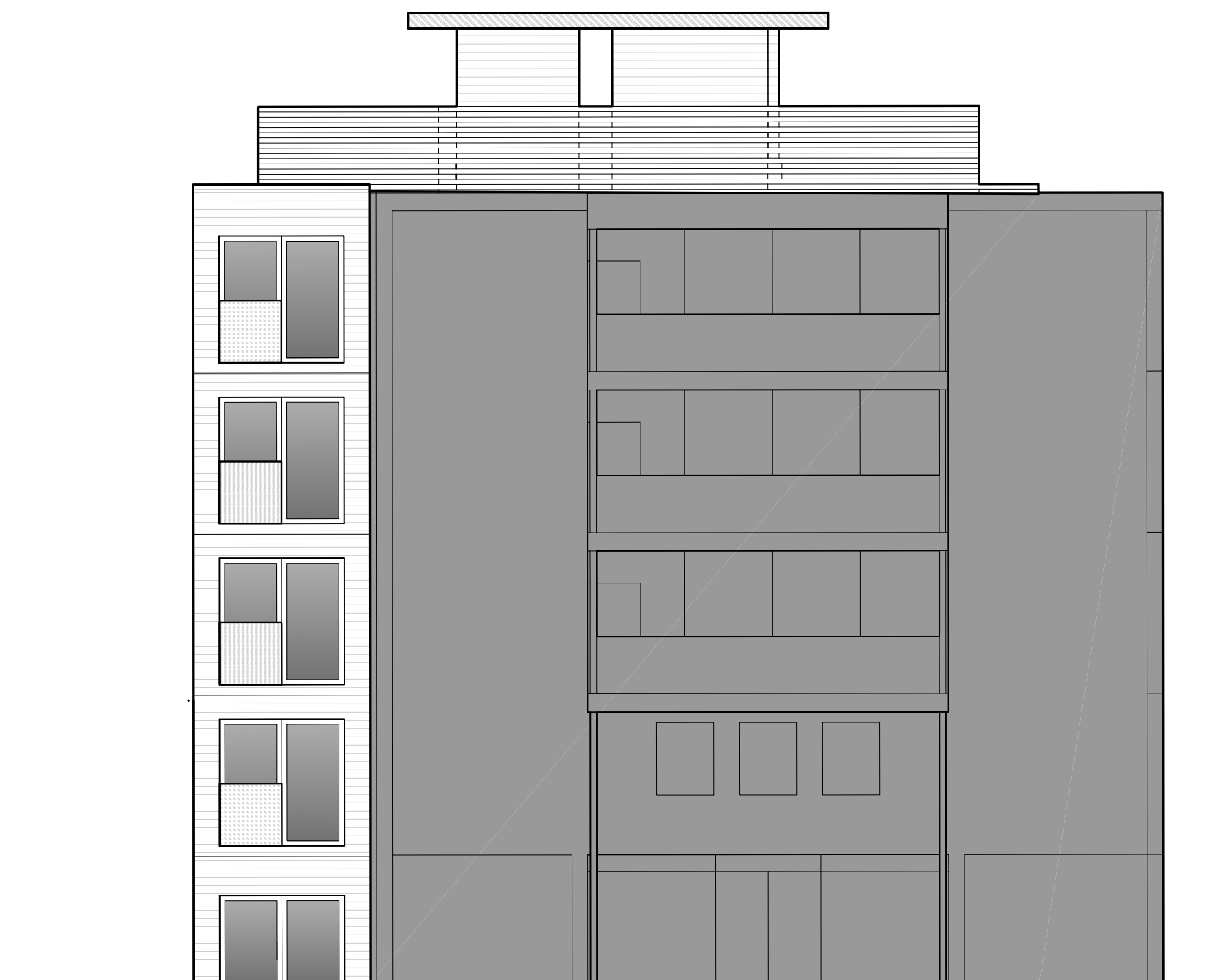
drawing
BUILDING ELEVATIONS

drawn	KDB	date	MAY-2021
approved	KDB	revision	1
project no.	2009	scale	1 : 75

drawing no.
A200



1
A201
REAR (SOUTH)
ELEVATIONS
1 : 100



2
A201
FRONT (NORTH)
ELEVATIONS
1 : 100



CLIENT :

SMART LIVING ON MCLEOD INC.
C/O SMART LIVING PROPERTIES
226 ARGYLE STREET,
OTTAWA, ON K2P 1B9

rev. / issue	description	date
01	ISSUED FOR CLIENT	15 JUL 2021

THE ARCHITECT WAIVES ANY AND ALL RESPONSIBILITY AND LIABILITY FOR PROBLEMS WHICH ARISE FROM FAILURE TO FOLLOW THESE PLANS, SPECIFICATIONS, AND THE DESIGN INTENT THEY CONVEY, OR FOR PROBLEMS WHICH ARISE FROM OTHERS' FAILURE TO OBTAIN AND/OR FOLLOW THE ARCHITECT'S GUIDANCE WITH RESPECT TO ANY ERRORS, OMISSIONS, INCONSISTENCIES, AMBIGUITIES OR CONFLICTS WHICH ARE ALLEGED.

IT IS THE RESPONSIBILITY OF THE APPROPRIATE CONTRACTOR TO CHECK AND VERIFY ALL DIMENSIONS ON SITE AND PROMPTLY REPORT ALL ERRORS AND/OR OMISSIONS TO THE CONSULTANT BEFORE WORK COMMENCES.

ALL WORK IS TO FOLLOW THE OBC 2012 AND ANY OTHER APPLICABLE CODES AND REGULATIONS.

DO NOT SCALE DRAWINGS.

THESE DRAWINGS ARE NOT TO BE USED FOR CONSTRUCTION UNLESS A BUILDING PERMIT IN RESPECT OF THIS PROJECT HAS BEEN GRANTED BY AUTHORITIES AND THEY ARE ISSUED FOR CONSTRUCTION.

COPYRIGHT RESERVED.

professional stamp project north

Kristopher D. Benes, OAA, MRAIC, LEED AP

OPA open plan
architects inc.
architecture | interiors | concepts

2305 HILLARY AVE. | OTTAWA | ON | K1H 7J2
613.883.5090 | info@openplan.ca

project

330 MCLEOD ST. ADDITION
OTTAWA, ON

drawing
BUILDING ELEVATIONS

drawn	KDB	date	MAY-2021
approved	KDB	revision	△
project no.	2009	scale	1 : 75

drawing no.

A201

**PART OF LOT 13
(SOUTH McLEOD STREET)
REGISTERED PLAN 30
CITY OF OTTAWA**

Prepared by Annis, O'Sullivan, Vollebakk Ltd.

Scale 1 : 200



Metric
DISTANCES SHOWN ON THIS PLAN ARE IN METRES AND CAN BE CONVERTED TO FEET BY DIVIDING BY 0.3048

Surveyor's Certificate

- I CERTIFY THAT:
1. This survey and plan are correct and in accordance with the Surveys Act, the Surveyors Act and the Land Titles Act and the regulations made under them.
 2. The survey was completed on the 22nd day of October, 2019.

October 23rd 2019
Date

Richard R. Gauthier
Ontario Land Surveyor

Notes & Legend

Denotes	
	Survey Monument Planted
	Survey Monument Found
SIB	Standard Iron Bar
SSIB	Short Standard Iron Bar
IB	Iron Bar
CC	Cut Cross
CP	Concrete Pin
(WIT)	Witness
Meas.	Measured
(AOG)	Annis, O'Sullivan, Vollebakk Ltd.
(P1)	Registered Plan 30
(P2)	(AOG) Plan March 25, 2004
(P3)	Plan 5R-8481
(P4)	(AOG) Plan December 7, 1989
(P5)	Ottawa-Carleton Standard Condominium Plan No.969
PED	Hydro Pedestal
OHW	Overhead Wires
o UP	Utility Pole
o AN	Anchor
o CB	Catch Basin
o FH	Fire Hydrant
o WV	Water Valve
o GM	Gas Meter
o PM	Parking Meter
	Deciduous Tree
	Coniferous Tree
o B	Bollard
CLF	Chain Link Fence
BF	Board Fence
RWW	Retaining Wall Wood
RWC	Retaining Wall Concrete
o	Diameter
+ 65.00	Location of Elevations
+ 65.00	Top of Concrete Curb Elevation

ASSOCIATION OF ONTARIO LAND SURVEYORS
PLAN SUBMISSION FORM
2104034



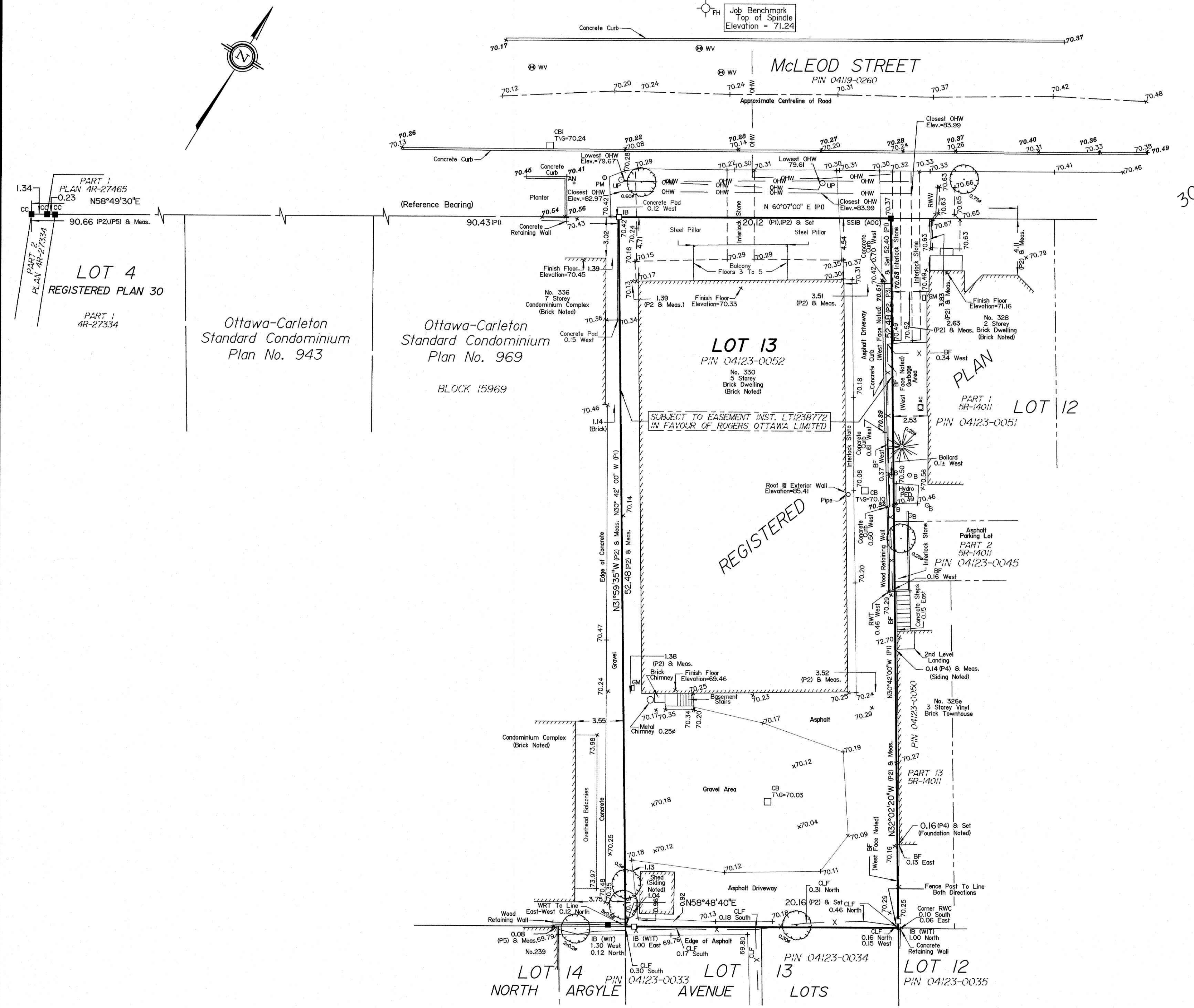
Bearings are astronomic, derived from the Southerly Limit of McLeod Street, shown on to be N58°49'30"E on plan (P2).
Site Area = 1056.9 square metres

THIS PLAN IS NOT VALID UNLESS IT IS AN EMBOSSED ORIGINAL COPY ISSUED BY THE SURVEYOR IN ACCORDANCE WITH Regulation 1026, Section 29 (3)

© Annis, O'Sullivan, Vollebakk Ltd., 2019. THIS PLAN IS PROTECTED BY COPYRIGHT

ANNIS, O'SULLIVAN, VOLLEBEKK LTD.
14 Concourse Gate, Suite 500
Nepean, Ont. K2E 7S6
Phone: (613) 727-0850 / Fax: (613) 727-1079
Email: Nepean@avotl.com

Ontario Land Surveyors
Job No. 19839-19 SmartLiving L13 RP30 T F



ELEVATION NOTES

1. Elevations shown are geodetic and are referred to the CGVD28 geodetic datum.
2. It is the responsibility of the user of this information to verify that the job benchmark has not been altered or disturbed and that its relative elevation and description agrees with the information shown on this drawing.

UTILITY NOTES

1. This drawing cannot be accepted as acknowledging all of the utilities and it will be the responsibility of the user to contact the respective utility authorities for confirmation.
2. Only visible surface utilities were located.
3. A field location of underground plant by the pertinent utility authority is mandatory before any work involving breaking ground, probing, excavating etc.

PART 1
PLAN 4R-27465
0.23
N58°49'30"E
90.66 (P2),(P5) & Meas.
LOT 4
REGISTERED PLAN 30
PART 1
4R-27334

Ottawa-Carleton
Standard Condominium
Plan No. 943

Ottawa-Carleton
Standard Condominium
Plan No. 969
BLOCK 15969

LOT 13
PIN 04123-0052
No. 330
5 Storey
Brick Dwelling
(Brick Noted)

PART 1
5R-14011
LOT 12
PIN 04123-0051

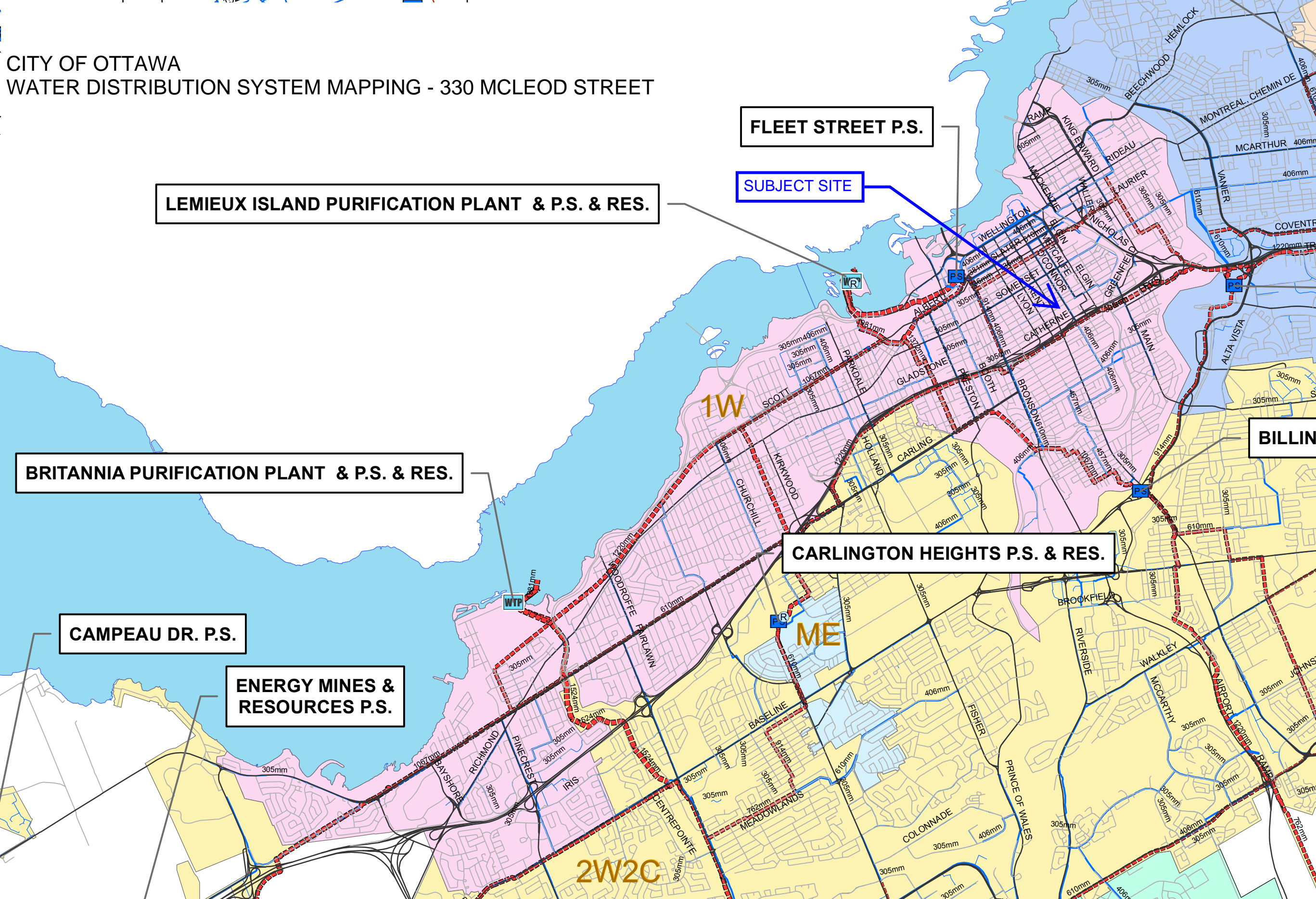
LOT 14
NORTH ARGYLE
PIN 04123-0033

LOT 13
AVENUE
LOTS
PIN 04123-0034

LOT 12
PIN 04123-0035

APPENDIX C
WATERMAIN CALCULATIONS

CITY OF OTTAWA
WATER DISTRIBUTION SYSTEM MAPPING - 330 MCLEOD STREET



LEMIEUX ISLAND PURIFICATION PLANT & P.S. & RES.

FLEET STREET P.S.

SUBJECT SITE

BRITANNIA PURIFICATION PLANT & P.S. & RES.

CAMPEAU DR. P.S.

ENERGY MINES & RESOURCES P.S.

CARLINGTON HEIGHTS P.S. & RES.

BILLIN

2W2C

1W

ME

McINTOSH PERRY

CO-22-1647 - 330 McLeod Street - Existing Water Demands

Project:	330 McLeod Street
Project No.:	CO-22-1647
Designed By:	AJG
Checked By:	AJG
Date:	September 28, 2021
Site Area:	0.106 gross ha

<u>Residential</u>	NUMBER OF UNITS	UNIT RATE	
Single Family	homes	3.4	persons/unit
Semi-detached	homes	2.7	persons/unit
Townhouse	homes	2.7	persons/unit
Bachelor Apartment	47 units	1.4	persons/unit
1 Bedroom Apartment	units	1.4	persons/unit
2 Bedroom Apartment	units	2.1	persons/unit
3 Bedroom Apartment	units	3.1	persons/unit
Average Apartment	units	1.8	persons/unit
Total Population	66 persons		
<u>Commercial</u>	m2		
<u>Industrial - Light</u>	m2		
<u>Industrial - Heavy</u>	m2		

AVERAGE DAILY DEMAND

DEMAND TYPE	AMOUNT	UNITS	
Residential	280	L/c/d	
Industrial - Light	35,000	L/gross ha/d	
Industrial - Heavy	55,000	L/gross ha/d	
Shopping Centres	2,500	L/(1000m ² /d)	
Hospital	900	L/(bed/day)	
Schools	70	L/(Student/d)	
Trailer Parks no Hook-Ups	340	L/(space/d)	
Trailer Park with Hook-Ups	800	L/(space/d)	
Campgrounds	225	L/(campsite/d)	
Mobile Home Parks	1,000	L/(Space/d)	
Motels	150	L/(bed-space/d)	
Hotels	225	L/(bed-space/d)	
Tourist Commercial	28,000	L/gross ha/d	
Othe Commercial	28,000	L/gross ha/d	
AVERAGE DAILY DEMAND	Residential	0.21	L/s
	Commerical/Industrial/Institutional	0.00	L/s

McINTOSH PERRY

MAXIMUM DAILY DEMAND

DEMAND TYPE	AMOUNT		UNITS
<i>Residential</i>	9.5	<i>x avg. day</i>	<i>L/c/d</i>
Industrial	1.5	x avg. day	L/gross ha/d
Commercial	1.5	x avg. day	L/gross ha/d
Institutional	1.5	x avg. day	L/gross ha/d
MAXIMUM DAILY DEMAND	Residential	2.03	L/s
	Commerical/Industrial/ Institutional	0.00	L/s

MAXIMUM HOUR DEMAND

DEMAND TYPE	AMOUNT		UNITS
<i>Residential</i>	14.3	<i>x avg. day</i>	<i>L/c/d</i>
Industrial	1.8	x max. day	L/gross ha/d
Commercial	1.8	x max. day	L/gross ha/d
Institutional	1.8	x max. day	L/gross ha/d
MAXIMUM HOUR DEMAND	Residential	3.06	L/s
	Commerical/Industrial/ Institutional	0.00	L/s

WATER DEMAND DESIGN FLOWS PER UNIT COUNT

CITY OF OTTAWA - WATER DISTRIBUTION GUIDELINES, JULY 2010

AVERAGE DAILY DEMAND	0.21	L/s
MAXIMUM DAILY DEMAND	2.03	L/s
MAXIMUM HOUR DEMAND	3.06	L/s

McINTOSH PERRY

CO-22-1647 - 330 McLeod Street - Proposed Water Demands

Project:	330 McLeod Street
Project No.:	CO-22-1647
Designed By:	AJG
Checked By:	AJG
Date:	September 28, 2021
Site Area:	0.106 gross ha

<u>Residential</u>	NUMBER OF UNITS	UNIT RATE	
Single Family	homes	3.4	persons/unit
Semi-detached	homes	2.7	persons/unit
Townhouse	homes	2.7	persons/unit
Bachelor Apartment	30 units	1.4	persons/unit
1 Bedroom Apartment	units	1.4	persons/unit
2 Bedroom Apartment	units	2.1	persons/unit
3 Bedroom Apartment	units	3.1	persons/unit
Average Apartment	units	1.8	persons/unit
Total Population	42 persons		
<u>Commercial</u>	m2		
<u>Industrial - Light</u>	m2		
<u>Industrial - Heavy</u>	m2		

AVERAGE DAILY DEMAND

DEMAND TYPE	AMOUNT	UNITS	
Residential	280	L/c/d	
Industrial - Light	35,000	L/gross ha/d	
Industrial - Heavy	55,000	L/gross ha/d	
Shopping Centres	2,500	L/(1000m ² /d)	
Hospital	900	L/(bed/day)	
Schools	70	L/(Student/d)	
Trailer Parks no Hook-Ups	340	L/(space/d)	
Trailer Park with Hook-Ups	800	L/(space/d)	
Campgrounds	225	L/(campsite/d)	
Mobile Home Parks	1,000	L/(Space/d)	
Motels	150	L/(bed-space/d)	
Hotels	225	L/(bed-space/d)	
Tourist Commercial	28,000	L/gross ha/d	
Othe Commercial	28,000	L/gross ha/d	
AVERAGE DAILY DEMAND	Residential	0.14	L/s
	Commerical/Industrial/Institutional	0.00	L/s

McINTOSH PERRY

MAXIMUM DAILY DEMAND

DEMAND TYPE	AMOUNT		UNITS
<i>Residential</i>	9.5	<i>x avg. day</i>	<i>L/c/d</i>
Industrial	1.5	x avg. day	L/gross ha/d
Commercial	1.5	x avg. day	L/gross ha/d
Institutional	1.5	x avg. day	L/gross ha/d
MAXIMUM DAILY DEMAND	Residential	1.29	L/s
	Commerical/Industrial/ Institutional	0.00	L/s

MAXIMUM HOUR DEMAND

DEMAND TYPE	AMOUNT		UNITS
<i>Residential</i>	14.3	<i>x avg. day</i>	<i>L/c/d</i>
Industrial	1.8	x max. day	L/gross ha/d
Commercial	1.8	x max. day	L/gross ha/d
Institutional	1.8	x max. day	L/gross ha/d
MAXIMUM HOUR DEMAND	Residential	1.95	L/s
	Commerical/Industrial/ Institutional	0.00	L/s

WATER DEMAND DESIGN FLOWS PER UNIT COUNT

CITY OF OTTAWA - WATER DISTRIBUTION GUIDELINES, JULY 2010

AVERAGE DAILY DEMAND	0.14	L/s
MAXIMUM DAILY DEMAND	1.29	L/s
MAXIMUM HOUR DEMAND	1.95	L/s

McINTOSH PERRY

CO-22-1647 - 330 McLeod Street - Combined Water Demands

Project:	330 McLeod Street
Project No.:	CO-22-1647
Designed By:	AJG
Checked By:	AJG
Date:	September 28, 2021
Site Area:	0.106 gross ha

<u>Residential</u>	NUMBER OF UNITS	UNIT RATE	
Single Family	homes	3.4	persons/unit
Semi-detached	homes	2.7	persons/unit
Townhouse	homes	2.7	persons/unit
Bachelor Apartment	77 units	1.4	persons/unit
1 Bedroom Apartment	units	1.4	persons/unit
2 Bedroom Apartment	units	2.1	persons/unit
3 Bedroom Apartment	units	3.1	persons/unit
Average Apartment	units	1.8	persons/unit
Total Population	108 persons		
<u>Commercial</u>	m2		
<u>Industrial - Light</u>	m2		
<u>Industrial - Heavy</u>	m2		

AVERAGE DAILY DEMAND

DEMAND TYPE	AMOUNT	UNITS	
Residential	280	L/c/d	
Industrial - Light	35,000	L/gross ha/d	
Industrial - Heavy	55,000	L/gross ha/d	
Shopping Centres	2,500	L/(1000m ² /d)	
Hospital	900	L/(bed/day)	
Schools	70	L/(Student/d)	
Trailer Parks no Hook-Ups	340	L/(space/d)	
Trailer Park with Hook-Ups	800	L/(space/d)	
Campgrounds	225	L/(campsite/d)	
Mobile Home Parks	1,000	L/(Space/d)	
Motels	150	L/(bed-space/d)	
Hotels	225	L/(bed-space/d)	
Tourist Commercial	28,000	L/gross ha/d	
Othe Commercial	28,000	L/gross ha/d	
AVERAGE DAILY DEMAND	Residential	0.35	L/s
	Commerical/Industrial/Institutional	0.00	L/s

McINTOSH PERRY

MAXIMUM DAILY DEMAND

DEMAND TYPE	AMOUNT		UNITS
<i>Residential</i>	9.5	<i>x avg. day</i>	<i>L/c/d</i>
Industrial	1.5	x avg. day	L/gross ha/d
Commercial	1.5	x avg. day	L/gross ha/d
Institutional	1.5	x avg. day	L/gross ha/d
MAXIMUM DAILY DEMAND	Residential	3.33	L/s
	Commerical/Industrial/ Institutional	0.00	L/s

MAXIMUM HOUR DEMAND

DEMAND TYPE	AMOUNT		UNITS
<i>Residential</i>	14.3	<i>x avg. day</i>	<i>L/c/d</i>
Industrial	1.8	x max. day	L/gross ha/d
Commercial	1.8	x max. day	L/gross ha/d
Institutional	1.8	x max. day	L/gross ha/d
MAXIMUM HOUR DEMAND	Residential	5.01	L/s
	Commerical/Industrial/ Institutional	0.00	L/s

WATER DEMAND DESIGN FLOWS PER UNIT COUNT

CITY OF OTTAWA - WATER DISTRIBUTION GUIDELINES, JULY 2010

AVERAGE DAILY DEMAND	0.35	L/s
MAXIMUM DAILY DEMAND	3.33	L/s
MAXIMUM HOUR DEMAND	5.01	L/s

McINTOSH PERRY

CO-22-1647 - 330 McLeod Street - OBC Fire Calculations

Project: 330 McLeod Street
 Project No.: CO-22-1647
 Designed By: AJG
 Checked By: AJG
 Date: September 28, 2021

Ontario 2006 Building Code Compendium (Div. B - Part 3)

Water Supply for Fire-Fighting - Residential

Building is classified as Group : **C** (from table 3.2.2.55)

Building is of noncombustible construction with fire separations and fire-resistance ratings provided in accordance with subsections 3.2.2., including loadbearing walls, columns and arches.

From Div. B A-3.2.5.7. of the Ontario Building Code - 3. Building On-Site Water Supply:

(a) $Q = K \times V \times Stot$

where:

Q = minimum supply of water in litres

K = water supply coefficient from Table 1

V = total building volume in cubic metres

Stot = total of spatial coefficient values from the property line exposures on all sides as obtained from the formula:

$Stot = 1.0 + [S_{side1} + S_{side2} + S_{side3} + \dots \text{etc.}]$

K	10	(from Table 1 pg A-31) (Worst case occupancy {E / F2} 'K' value used)
V	6,447	(Total building volume in m ³ .) *Assumed 8 ft ceilings.
Stot	2.0	(From figure 1 pg A-32)
Q =	128,942.59 L	

From Figure 1 (A-32)

Snorth	4.54	m	0.5
Seast	0.30	m	0.5
Ssouth	4.45	m	0.5
Swest	1.35	m	0.5

*approximate distances

From Table 2: Required Minimum Water Supply Flow Rate (L/s)

3600 L/min if Q > 108,000 L and < 135,000 L
951 gpm

McINTOSH PERRY

CO-22-1647 - 330 McLeod Street - Fire Underwriters Survey

Project: 330 McLeod Street
 Project No.: CO-22-1647
 Designed By: AJG
 Checked By: AJG
 Date: September 28, 2021

From the Fire Underwriters Survey (1999)

From Part II – Guide for Determination of Required Fire Flow Copyright I.S.O.:
 Updated per City of Ottawa Technical Bulletin ISTB-2018-02

A. BASE REQUIREMENT (Rounded to the nearest 1000 L/min)

F = 220 x C x √A Where: F = Required fire flow in liters per minute
 C = Coefficient related to the type of construction.
 A = The total floor area in square meters (including all storey's, but excluding basements at least 50 percent below grade) in the building being considered.

Construction Type **Non-Combustible Construction**

C 0.8 A 2,644.0 m²

Calculated Fire Flow 9,049.9 L/min
 9,000.0 L/min

B. REDUCTION FOR OCCUPANCY TYPE (No Rounding)

From note 2, Page 18 of the Fire Underwriter Survey:
 Limited Combustible -15%

Fire Flow 7,650.0 L/min

C. REDUCTION FOR SPRINKLER TYPE (No Rounding)

Standard Water Supply Sprinklered -40%

Reduction -3,060.0 L/min

D. INCREASE FOR EXPOSURE (No Rounding)

	Separation Distance (m)	Cons.of Exposed Wall	Length Exposed Adjacent Wall (m)	Height (Stories)	Length-Height Factor	
Exposure 1	20.1 to 30	Wood frame	21	2	42.0	8%
Exposure 2	3.1 to 10	Wood frame	44	3	132.0	20%
Exposure 3	10.1 to 20	Wood frame	21	2	42.0	13%
Exposure 4	3.1 to 10	Non-Combustible	40	8	320.0	20%
					% Increase*	61%

Increase* 4,666.5 L/min

E. Total Fire Flow (Rounded to the Nearest 1000 L/min)

Fire Flow 9,256.5 L/min
 Fire Flow Required** 9,000.0 L/min

*In accordance with Part II, Section 4, the Increase for separation distance is not to exceed 75%

**In accordance with Section 4 the Fire flow is not to exceed 45,000 L/min or be less than 2,000 L/min

McINTOSH PERRY

CO-22-1647 - 330 McLeod Street - Boundary Condition Unit Conversion

Project: 330 McLeod Street
Project No.: CO-22-1647
Designed By: AJG
Checked By: AJG
Date: September 28, 2021

Boundary Conditions Unit Conversion

MCLEOD STREET

Scenario	Height (m)	Elevation (m)	m H ₂ O	PSI	kPa
Avg. DD	115.3	70.2	45.1	64.1	442.0
Fire Flow (150 L/s or 9,000 L/min)	105.6	70.2	35.4	50.3	346.9
Peak Hour	106.8	70.2	36.6	52.0	358.7

Alison Gosling

From: Wu, John <John.Wu@ottawa.ca>
Sent: September 7, 2021 1:25 PM
To: Alison Gosling
Subject: RE: 22-1647 330 McLeod Street - Boundary Condition Request
Attachments: 330 McLeod Street September 2021.pdf

Follow Up Flag: Follow up
Flag Status: Flagged

Here is the result:

******The following information may be passed on to the consultant, but do NOT forward this e-mail directly.******

The following are boundary conditions, HGL, for hydraulic analysis at 330 McLeod Street (zone 1W) assumed connected to the 203 mm watermain on McLeod Street (see attached PDF for location).

Minimum HGL: 106.8 m

Maximum HGL: 115.3 m

Max Day + FF (150 L/s): 105.6 m

These are for current conditions and are based on computer model simulation.

Disclaimer: The boundary condition information is based on current operation of the city water distribution system. The computer model simulation is based on the best information available at the time. The operation of the water distribution system can change on a regular basis, resulting in a variation in boundary conditions. The physical properties of watermains deteriorate over time, as such must be assumed in the absence of actual field test data. The variation in physical watermain properties can therefore alter the results of the computer model simulation.

John

From: Alison Gosling <a.gosling@mcintoshperry.com>
Sent: August 30, 2021 4:22 PM
To: Wu, John <John.Wu@ottawa.ca>
Subject: 22-1647 330 McLeod Street - Boundary Condition Request

CAUTION: This email originated from an External Sender. Please do not click links or open attachments unless you recognize the source.

ATTENTION : Ce courriel provient d'un expéditeur externe. Ne cliquez sur aucun lien et n'ouvrez pas de pièce jointe, excepté si vous connaissez l'expéditeur.

Good afternoon John,

We would like to request Boundary Conditions for the proposed site located at 330 McLeod Street. The proposed development consists of a 4-storey building addition containing 30 units to the existing building containing 47 units. The proposed connection will be to the existing 203mm dia. watermain within McLeod Street.

- The estimated fire flow is 9,000 L/min based on the FUS
- The estimated fire flow is 2,700 L/min based on the OBC
- Average daily demand: 0.14 L/s OR 0.35 L/s with the existing building
- Maximum daily demand: 1.29 L/s OR 3.33 L/s with the existing building
- Maximum hourly daily demand: 1.95 L/s OR 5.01 L/s with the existing building

Attached is a map showing the proposed connection location along with the calculations prepared for the demands listed above.

Please let me know if you have any questions.

Thank you,

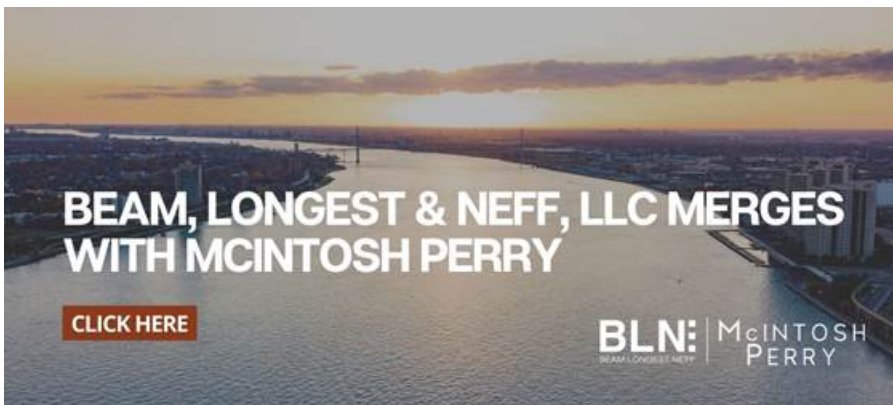
Alison Gosling, P.Eng.

Project Engineer, Land Development
115 Walgreen Road, Carp, ON, K0A 1L0
T. 613.714.4629

a.gosling@mcintoshperry.com | www.mcintoshperry.com

McINTOSH PERRY

Turning Possibilities Into Reality



Platinum member

Confidentiality Notice – If this email wasn't intended for you, please return or delete it. Click [here](#) to read all of the legal language around this concept.

This e-mail originates from the City of Ottawa e-mail system. Any distribution, use or copying of this e-mail or the information it contains by other than the intended recipient(s) is unauthorized. Thank you.

Le présent courriel a été expédié par le système de courriels de la Ville d'Ottawa. Toute distribution, utilisation ou reproduction du courriel ou des renseignements qui s'y trouvent par une personne autre que son destinataire prévu est interdite. Je vous remercie de votre collaboration.

Boundary Conditions for 330 McLeod Street



- PRIVATE
- PUBLIC

APPENDIX D
SANITARY CALCULATIONS

McINTOSH PERRY

CO-22-1647 - 330 McLeod Street - Sanitary Demands - Existing

Project:	330 McLeod Street		
Project No.:	CO-22-1647		
Designed By:	AJG		
Checked By:	AJG		
Date:	September 29, 2021		
Site Area	0.106	Gross ha	
Bachelor	47		1.40 Persons per unit
Total Population	66	Persons	

DESIGN PARAMETERS

Residential Peaking Factor	3.63	* Using Harmon Formula = $1 + (14 / (4 + P^{0.5})) * 0.8$ where P = population in thousands, Harmon's Correction Factor = 0.8
Mannings coefficient (n)	0.013	
Demand (per capita)	280	L/day
Infiltration allowance	0.33	L/s/Ha

EXTRANEOUS FLOW ALLOWANCES

Infiltration / Inflow	Flow (L/s)
Dry	0.005
Wet	0.030
Total	0.035

AVERAGE DAILY DEMAND

DEMAND TYPE	AMOUNT	UNITS	POPULATION / AREA	Flow (L/s)
Residential	280	L/c/d	66	0.214
Industrial - Light**	35,000	L/gross ha/d		0
Industrial - Heavy**	55,000	L/gross ha/d		0
Commercial / Amenity	2,800	L/(1000m ² /d)		0
Hospital	900	L/(bed/day)		0
Schools	70	L/(Student/d)		0
Trailer Parks no Hook-Ups	340	L/(space/d)		0
Trailer Park with Hook-Ups	800	L/(space/d)		0
Campgrounds	225	L/(campsite/d)		0
Mobile Home Parks	1,000	L/(Space/d)		0
Motels	150	L/(bed-space/d)		0
Hotels	225	L/(bed-space/d)		0
Office	75	L/7.0m ² /d		0
Tourist Commercial	28,000	L/gross ha/d		0
Other Commercial	28,000	L/gross ha/d		0

McINTOSH PERRY

AVERAGE RESIDENTIAL FLOW	0.214	L/s
PEAK RESIDENTIAL FLOW	0.777	L/s
AVERAGE ICI FLOW	0.00	L/s
PEAK INSTITUTIONAL/COMMERCIAL FLOW	0.00	L/s
PEAK INDUSTRIAL FLOW	0.00	L/s
TOTAL PEAK ICI FLOW	0.00	L/s

TOTAL SANITARY DEMAND

TOTAL ESTIMATED AVERAGE DRY WEATHER FLOW	0.22	L/s
TOTAL ESTIMATED PEAK DRY WEATHER FLOW	0.78	L/s
TOTAL ESTIMATED PEAK WET WEATHER FLOW	0.81	L/s

McINTOSH PERRY

CO-22-1647 - 330 McLeod Street - Sanitary Demands - Proposed Building Addition

Project:	330 McLeod Street		
Project No.:	CO-22-1647		
Designed By:	AJG		
Checked By:	AJG		
Date:	September 29, 2021		
Site Area	0.106	Gross ha	
Bachelor	30		1.40 Persons per unit
Total Population	42	Persons	

DESIGN PARAMETERS

Residential Peaking Factor	3.66	* Using Harmon Formula = $1 + (14 / (4 + P^{0.5})) * 0.8$ where P = population in thousands, Harmon's Correction Factor = 0.8
Mannings coefficient (n)	0.013	
Demand (per capita)	280	L/day
Infiltration allowance	0.33	L/s/Ha

EXTRANEOUS FLOW ALLOWANCES

Infiltration / Inflow	Flow (L/s)
Dry	0.005
Wet	0.030
Total	0.035

AVERAGE DAILY DEMAND

DEMAND TYPE	AMOUNT	UNITS	POPULATION / AREA	Flow (L/s)
Residential	280	L/c/d	42	0.136
Industrial - Light**	35,000	L/gross ha/d		0
Industrial - Heavy**	55,000	L/gross ha/d		0
Commercial / Amenity	2,800	L/(1000m ² /d)		0
Hospital	900	L/(bed/day)		0
Schools	70	L/(Student/d)		0
Trailer Parks no Hook-Ups	340	L/(space/d)		0
Trailer Park with Hook-Ups	800	L/(space/d)		0
Campgrounds	225	L/(campsite/d)		0
Mobile Home Parks	1,000	L/(Space/d)		0
Motels	150	L/(bed-space/d)		0
Hotels	225	L/(bed-space/d)		0
Office	75	L/7.0m ² /d		0
Tourist Commercial	28,000	L/gross ha/d		0
Other Commercial	28,000	L/gross ha/d		0

McINTOSH PERRY

AVERAGE RESIDENTIAL FLOW	0.14	L/s
PEAK RESIDENTIAL FLOW	0.50	L/s
AVERAGE ICI FLOW	0.00	L/s
PEAK INSTITUTIONAL/COMMERCIAL FLOW	0.00	L/s
PEAK INDUSTRIAL FLOW	0.00	L/s
TOTAL PEAK ICI FLOW	0.00	L/s

TOTAL SANITARY DEMAND

TOTAL ESTIMATED AVERAGE DRY WEATHER FLOW	0.141	L/s
TOTAL ESTIMATED PEAK DRY WEATHER FLOW	0.504	L/s
TOTAL ESTIMATED PEAK WET WEATHER FLOW	0.534	L/s

McINTOSH PERRY

CO-22-1647 - 330 McLeod Street - Sanitary Demands - Total

Project:	330 McLeod Street		
Project No.:	CO-22-1647		
Designed By:	AJG		
Checked By:	AJG		
Date:	September 29, 2021		
Site Area	0.106	Gross ha	
Bachelor	77		1.40 Persons per unit
Total Population	108	Persons	

DESIGN PARAMETERS

Institutional/Commercial Peaking Factor	1.5	
Residential Peaking Factor	3.59	* Using Harmon Formula = $1+(14/(4+P^{0.5})) * 0.8$ where P = population in thousands, Harmon's Correction Factor = 0.8
Mannings coefficient (n)	0.013	
Demand (per capita)	280	L/day
Infiltration allowance	0.33	L/s/Ha

EXTRANEOUS FLOW ALLOWANCES

Infiltration / Inflow	Flow (L/s)
Dry	0.005
Wet	0.030
Total	0.035

yeah

AVERAGE DAILY DEMAND

DEMAND TYPE	AMOUNT	UNITS	POPULATION / AREA	Flow (L/s)
Residential	280	L/c/d	108	0.350
Industrial - Light**	35,000	L/gross ha/d		0
Industrial - Heavy**	55,000	L/gross ha/d		0
Commercial / Amenity	2,800	L/(1000m ² /d)		0
Hospital	900	L/(bed/day)		0
Schools	70	L/(Student/d)		0
Trailer Parks no Hook-Ups	340	L/(space/d)		0
Trailer Park with Hook-Ups	800	L/(space/d)		0
Campgrounds	225	L/(campsite/d)		0
Mobile Home Parks	1,000	L/(Space/d)		0
Motels	150	L/(bed-space/d)		0
Hotels	225	L/(bed-space/d)		0
Office	75	L/7.0m ² /d		0
Tourist Commercial	28,000	L/gross ha/d		0
Other Commercial	28,000	L/gross ha/d		0

McINTOSH PERRY

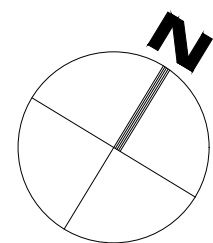
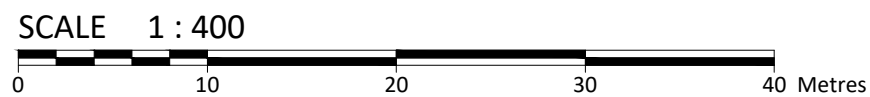
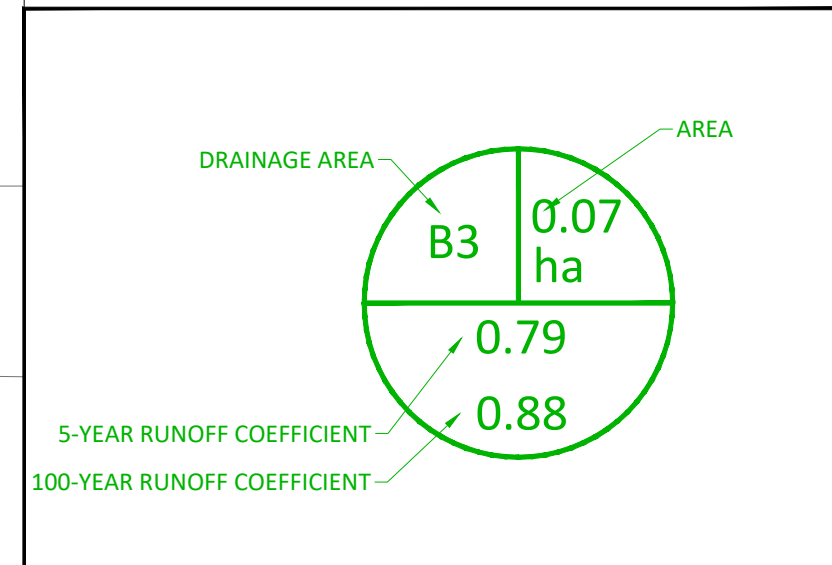
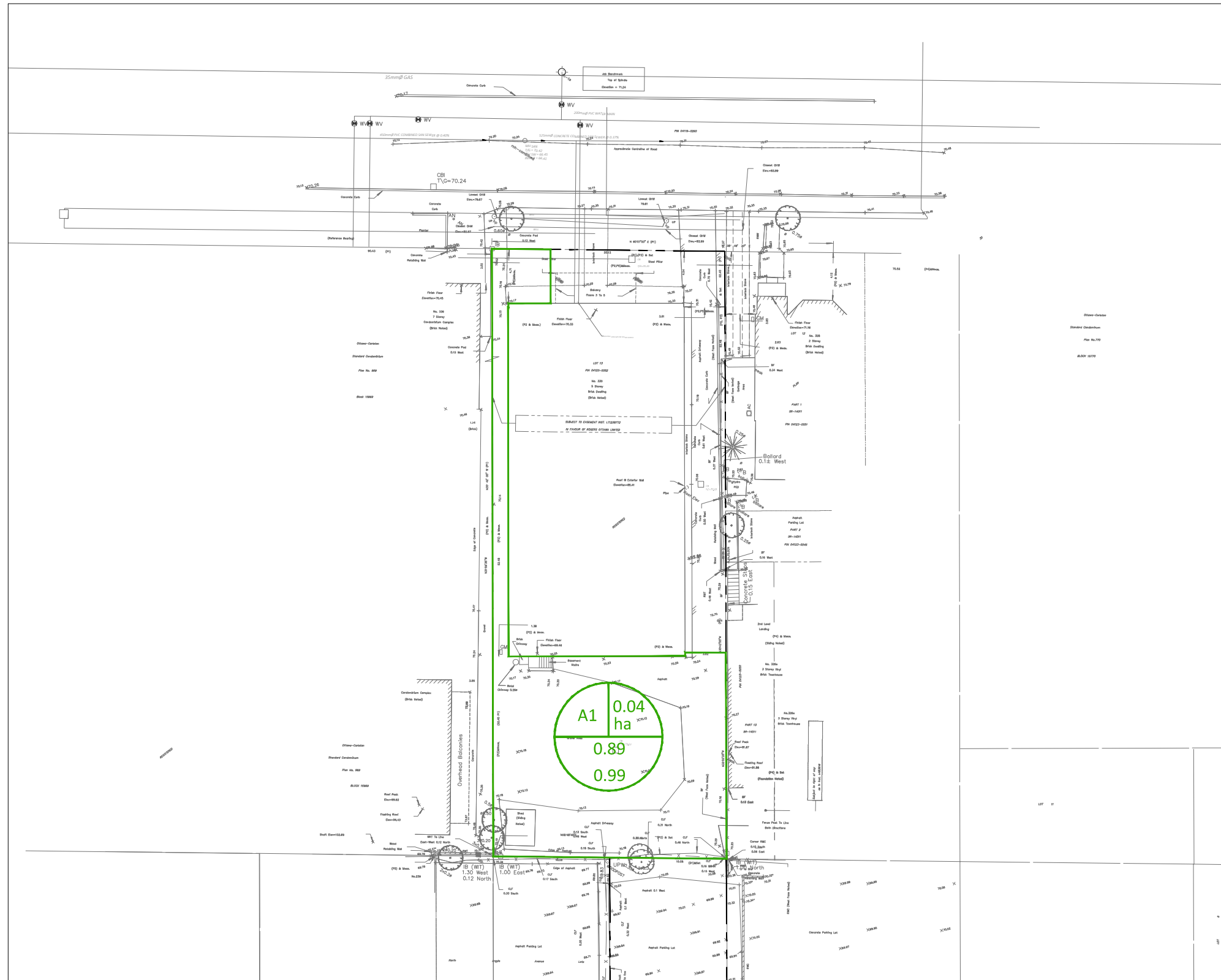
AVERAGE RESIDENTIAL FLOW	0.35	L/s
PEAK RESIDENTIAL FLOW	1.26	L/s
AVERAGE ICI FLOW	0.000	L/s
PEAK INSTITUTIONAL/COMMERCIAL FLOW	0.000	L/s
PEAK INDUSTRIAL FLOW	0.000	L/s
TOTAL PEAK ICI FLOW	0.000	L/s

TOTAL SANITARY DEMAND

TOTAL ESTIMATED AVERAGE DRY WEATHER FLOW	0.36	L/s
TOTAL ESTIMATED PEAK DRY WEATHER FLOW	1.26	L/s
TOTAL ESTIMATED PEAK WET WEATHER FLOW	1.29	L/s

**APPENDIX E
PRE-DEVELOPMENT DRAINAGE PLAN**

FILENAME: U:\Ottawa\01 Project - Proposal\2022 Jobs\CCO\CO-22-1647 Smart Living Apartment - 330 McLeod Street - Grading Plan.dwg
 LAST SAVED: Monday, October 04, 2022 10:04:00 AM LAST SAVED BY: rrobineau
 LAST PLOTTED: Monday, October 04, 2022 10:04:00 AM CIB FILE USED: ---

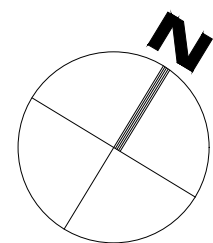
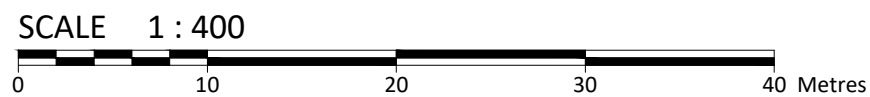
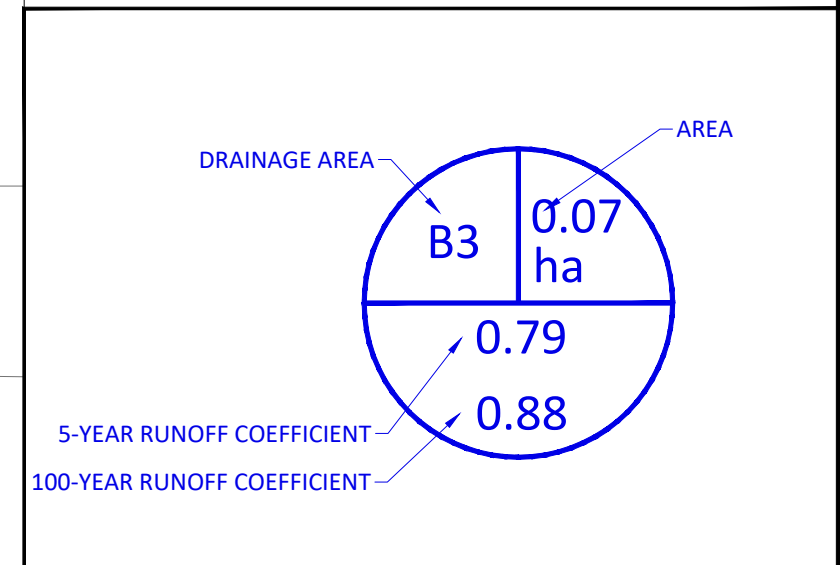
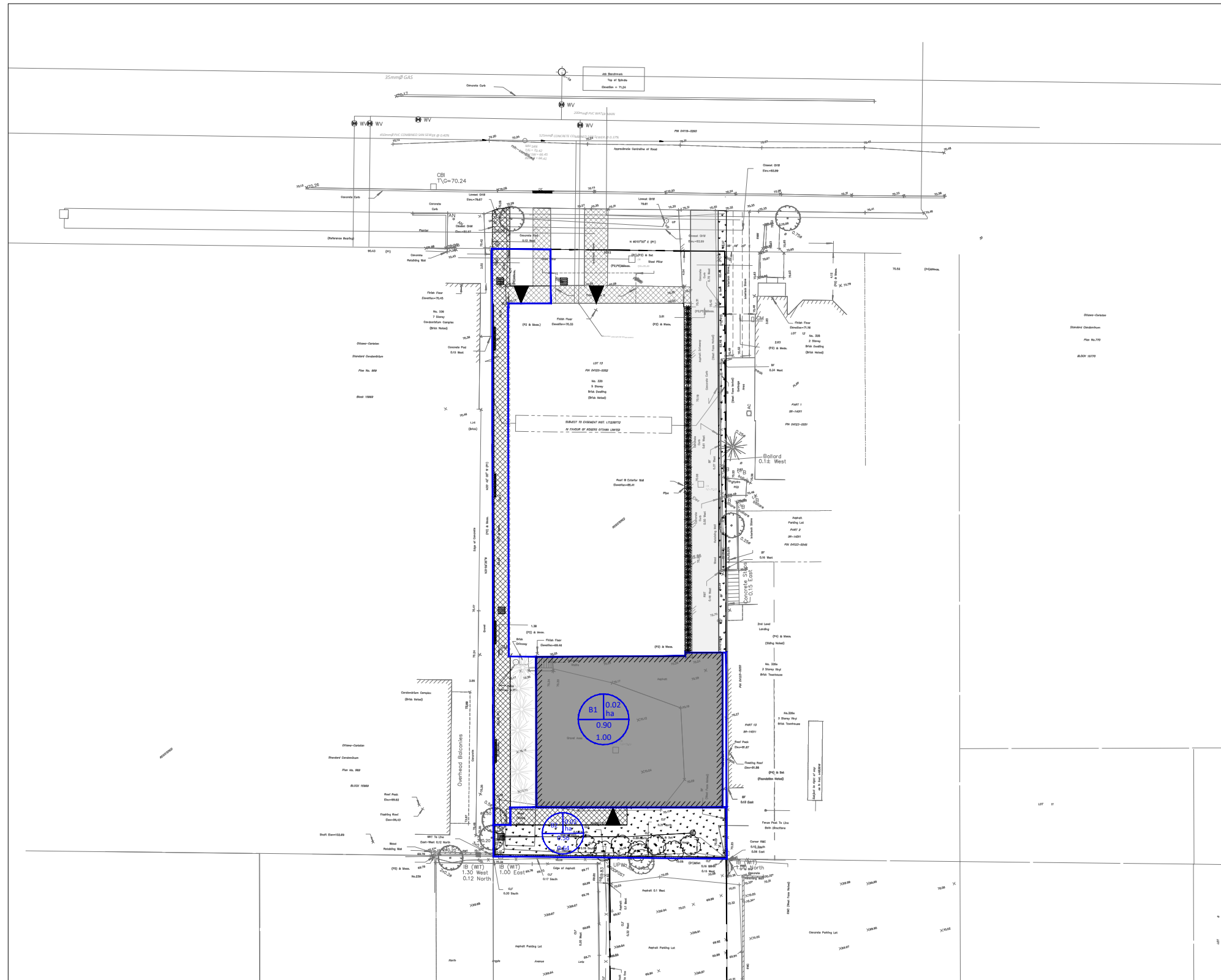


McINTOSH PERRY
 115 Walgreen Road, RR3, Carp, ON K0A 1L0
 Tel: 613-836-2184 Fax: 613-836-3742
 www.mcintoshperry.com

Client:		SMART LIVING PROPERTIES 226 ARGYLE AVE OTTAWA, ON K2P 1B9	
Project:		330 MCLEOD STREET	
Drawing Title:		PRE-DEVELOPMENT DRAINAGE AREA PLAN	
Drawn by:	Checked By:	Drawing Number:	
R.R.R.	A.J.G.	PRE	
Scale:	Project Number:	1 ISSUED FOR REVIEW	2021.10.04
1:400	CCO-22-1647	No. Revisions	Date

APPENDIX F
POST-DEVELOPMENT DRAINAGE PLAN

FILENAME: U:\Ottawa\01 Project - Proposal\2022 Jobs\CCO-22-1647 Smart Living Apartment - 330 McLeod Street - Grading Plan.dwg
 LAST SAVED: Monday, October 04, 2022 10:04:00 AM LAST SAVED BY: rrobineau
 LAST PLOTTED: Monday, October 04, 2022 10:04:00 AM CIB FILE USED: ---



McINTOSH PERRY
 115 Walgreen Road, RR3, Carp, ON K0A 1L0
 Tel: 613-836-2184 Fax: 613-836-3742
 www.mcintoshperry.com

Client: **SMART LIVING PROPERTIES**
 226 ARGYLE AVE OTTAWA, ON K2P 1B9

Project: **330 MCLEOD STREET**

Drawing Title: **POST-DEVELOPMENT DRAINAGE AREA PLAN**

Drawn by: **R.R.R.**
 Scale: **1:400**

Checked By: **A.J.G.**
 Project Number: **CCO-22-1647**

Drawing Number:		POST
1	ISSUED FOR REVIEW	
No.	Revisions	Date
		2021.10.04

APPENDIX G
STORMWATER MANAGEMENT CALCULATIONS

McINTOSH PERRY

CCO-22-1647 - 330 McLeod Street - Runoff Calculations

Pre-Development Runoff Coefficient

Drainage Area	Area (ha)	Impervious Area (m ²)	C	Gravel Area (m ²)	C	Pervious Area (m ²)	C	C _{AVG} 2/5-Year	C _{AVG} 100-Year
A1	0.042	409.67	0.90	0.00	0.60	7.13	0.20	0.89	0.99

Pre-Development Runoff Calculations

Drainage Area	Area (ha)	C 5-Year	C 100-Year	Tc (min)	I (mm/hr)			Q (L/s)		
					2-Year	5-Year	100-Year	2-Year	5-Year	100-Year
A1	0.042	0.89	0.99	10	76.8	104.2	178.6	7.9	10.72	20.42
Total	0.042							7.90	10.72	20.42

Post-Development Runoff Coefficient

Drainage Area	Area (ha)	Impervious Area (m ²)	C	Gravel Area (m ²)	C	Pervious Area (m ²)	C	C _{AVG} 2/5-Year	C _{AVG} 100-Year
B1	0.021	211.00	0.90	0.00	0.60	0.00	0.20	0.90	1.00
B2	0.021	107.29	0.90	0.00	0.60	98.51	0.20	0.56	0.64

Post-Development Runoff Calculations

Drainage Area	Area (ha)	C 2/5-Year	C 100-Year	Tc (min)	I (mm/hr)		Q (L/s)	
					5-Year	100-Year	5-Year	100-Year
B1	0.021	0.90	1.00	10	104.2	178.6	5.50	10.47
B2	0.021	0.56	0.64	10	104.2	178.6	3.37	6.55
Total	0.042						8.87	17.02

Required Restricted Flow

Drainage Area	Area (ha)	C 5-Year	Tc (min)	I (mm/hr)	Q (L/s)
				2-Year	2-Year
A1	0.042	0.40	10	76.8	3.56

Post-Development Restricted Runoff Calculations

Drainage Area	Unrestricted Flow (L/s)		Restricted Flow (L/s)		Storage Required (m ³)		Storage Provided (m ³)		
	5-Year	100-Year	5-Year	100-Year	5-Year	100-Year	5-Year	100-Year	
B1	5.50	10.47	0.76	1.26	3.8	7.6	4.7	7.9	Restricted
B2	3.37	6.55	3.37	6.55					Unrestricted
Total	8.87	17.02	4.13	7.81	3.8	7.6	4.7	7.9	

CCO-22-1647 - 330 McLeod Street - Runoff Calculations

Storage Requirements for Area B1

5-Year Storm Event

Tc (min)	I (mm/hr)	B1 Runoff (L/s)	Allowable Outflow (L/s)	Runoff to be Stored (L/s)	Storage Required (m ³)
10	104.2	5.50	0.76	4.74	2.84
20	70.3	3.71	0.76	2.95	3.54
30	53.9	2.85	0.76	2.09	3.76
40	44.2	2.33	0.76	1.57	3.77
50	37.7	1.99	0.76	1.23	3.68
60	32.9	1.74	0.76	0.98	3.52
70	29.4	1.55	0.76	0.79	3.32
80	26.6	1.40	0.76	0.64	3.08
90	24.3	1.28	0.76	0.52	2.82
100	22.4	1.18	0.76	0.42	2.54

Maximum Storage Required 5-Year (m³) = 3.77

100-Year Storm Event

Tc (min)	I (mm/hr)	B1 Runoff (L/s)	Allowable Outflow (L/s)	Runoff to be Stored (L/s)	Storage Required (m ³)
10	178.6	10.47	1.26	9.21	5.53
20	120.0	7.04	1.26	5.78	6.93
30	91.9	5.39	1.26	4.13	7.43
40	75.1	4.41	1.26	3.15	7.55
50	64.0	3.75	1.26	2.49	7.47
60	55.9	3.28	1.26	2.02	7.27
70	49.8	2.92	1.26	1.66	6.97
80	45.0	2.64	1.26	1.38	6.62

Maximum Storage Required 100-Year (m³) = 7.55

McINTOSH PERRY

Storage Occupied In Area B1

5-Year Storm Event

Roof Storage			
Location	Area*	Depth	Volume (m ³)
Roof	158.25	0.030	4.7
Total			4.7

Storage Available (m ³) =	4.7
Storage Required (m ³) =	3.8

100-Year Storm Event

Roof Storage			
Location	Area*	Depth	Volume (m ³)
Roof	158.25	0.050	7.9
Total			7.9

Storage Available (m ³) =	7.9
Storage Required (m ³) =	7.6

*Storage area is 75% of the total roof area

McINTOSH PERRY

CCO-22-1647 - 330 McLeod Street - Runoff Calculations

4 of 11

Roof Drain Flow (B1)

Roof Drains Summary		
Type of Control Device	Watts Drainage - Accutrol Weir	
Number of Roof Drains	2	
	5-Year	100-Year
Rooftop Storage (m ³)	4.75	7.91
Storage Depth (m)	0.030	0.050
Flow (Per Roof Drain) (L/s)	0.38	0.63
Total Flow (L/s)	0.76	1.26

Flow Rate Vs. Build-Up (One Weir)	
Depth (mm)	Flow (L/s)
15	0.19
20	0.25
25	0.32
30	0.38
35	0.44
40	0.50
45	0.57
50	0.63
55	0.69

*Roof Drain model to be Accutrol Weirs, See attached sheets

*Roof Drain Flow information taken from Watts Drainage website

CALCULATING ROOF FLOW EXAMPLES

2 roof drains during a 5 year storm

elevation of water = 30mm

Flow leaving 2 roof drains = (2 x 0.36 L/s) = 0.72 L/s

2 roof drains during a 100 year storm

elevation of water = 45mm

Flow leaving 2 roof drains = (2 x 0.54 L/s) = 1.08 L/s

Roof Drain Flow			
	Flow (l/s)	Storage Depth (mm)	Drains Flow (l/s)
	0.19	15	0.38
	0.25	20	0.50
	0.32	25	0.64
5-Year	0.38	30	0.76
	0.44	35	0.88
	0.50	40	1.00
100-Year	0.63	50	1.26
	0.69	55	1.38
	0.76	60	1.52
	0.82	65	1.64
	0.88	70	1.76
	0.95	75	1.90
	1.01	80	2.02
	1.07	85	2.14
	1.13	90	2.26
	1.20	95	2.40
	1.26	100	2.52
	1.32	105	2.64
	1.39	110	2.78
	1.45	115	2.90
	1.51	120	3.02
	1.58	125	3.16
	1.64	130	3.28
	1.70	135	3.40
	1.76	140	3.52
	1.83	145	3.66
	1.89	150	3.78

Note: The flow leaving through a restricted roof drain is based on flow vs. head information

McINTOSH PERRY

CCO-22-1647 - 330 McLeod Street - Runoff Calculations

11 of 11

Time of Concentration Pre-Development

Drainage Area ID	Sheet Flow Distance (m)	Slope of Land (%)	Tc (min) (5-Year)	Tc (min) (100-Year)
A1	65	1.20	5	5

**Therefore, a Tc of 10 can be used*

$$T_c = (3.26(1.1-c)L^{0.5}/S^{0.33})$$

c= Balanced Runoff Coefficient

L= Length of Drainage Area

S= Average Slope of Watershed

**APPENDIX H
CITY OF OTTAWA DESIGN CHECKLIST**

City of Ottawa

4. Development Servicing Study Checklist

The following section describes the checklist of the required content of servicing studies. It is expected that the proponent will address each one of the following items for the study to be deemed complete and ready for review by City of Ottawa Infrastructure Approvals staff.

The level of required detail in the Servicing Study will increase depending on the type of application. For example, for Official Plan amendments and re-zoning applications, the main issues will be to determine the capacity requirements for the proposed change in land use and confirm this against the existing capacity constraint, and to define the solutions, phasing of works and the financing of works to address the capacity constraint. For subdivisions and site plans, the above will be required with additional detailed information supporting the servicing within the development boundary.

4.1 General Content

Criteria	Location (if applicable)
<input type="checkbox"/> Executive Summary (for larger reports only).	N/A
<input type="checkbox"/> Date and revision number of the report.	On Cover
<input type="checkbox"/> Location map and plan showing municipal address, boundary, and layout of proposed development.	Appendix A
<input type="checkbox"/> Plan showing the site and location of all existing services.	Site Servicing Plan (C102)
<input type="checkbox"/> Development statistics, land use, density, adherence to zoning and official plan, and reference to applicable subwatershed and watershed plans that provide context to which individual developments must adhere.	1.1 Purpose 1.2 Site Description 6.0 Stormwater Management
<input type="checkbox"/> Summary of pre-consultation meetings with City and other approval agencies.	Appendix B
<input type="checkbox"/> Reference and confirm conformance to higher level studies and reports (Master Servicing Studies, Environmental Assessments, Community Design Plans), or in the case where it is not in conformance, the proponent must provide justification and develop a defensible design criteria.	1.1 Purpose 1.2 Site Description 6.0 Stormwater Management
<input type="checkbox"/> Statement of objectives and servicing criteria.	3.0 Pre-Consultation Summary

<input type="checkbox"/> Identification of existing and proposed infrastructure available in the immediate area.	N/A
<input type="checkbox"/> Identification of Environmentally Significant Areas, watercourses and Municipal Drains potentially impacted by the proposed development (Reference can be made to the Natural Heritage Studies, if available).	Site Grading Plan (C101)
<input type="checkbox"/> Concept level master grading plan to confirm existing and proposed grades in the development. This is required to confirm the feasibility of proposed stormwater management and drainage, soil removal and fill constraints, and potential impacts to neighbouring properties. This is also required to confirm that the proposed grading will not impede existing major system flow paths.	Site Grading Plan (C101)
<input type="checkbox"/> Identification of potential impacts of proposed piped services on private services (such as wells and septic fields on adjacent lands) and mitigation required to address potential impacts.	N/A
<input type="checkbox"/> Proposed phasing of the development, if applicable.	N/A
<input type="checkbox"/> Reference to geotechnical studies and recommendations concerning servicing.	Section 2.0 Background Studies, Standards and References
<input type="checkbox"/> All preliminary and formal site plan submissions should have the following information: <ul style="list-style-type: none"> ○ Metric scale ○ North arrow (including construction North) ○ Key plan ○ Name and contact information of applicant and property owner ○ Property limits including bearings and dimensions ○ Existing and proposed structures and parking areas ○ Easements, road widening and rights-of-way ○ Adjacent street names 	Site Grading Plan (C101)

4.2 Development Servicing Report: Water

Criteria	Location (if applicable)
<input type="checkbox"/> Confirm consistency with Master Servicing Study, if available	N/A
<input type="checkbox"/> Availability of public infrastructure to service proposed development	N/A
<input type="checkbox"/> Identification of system constraints	N/A
<input type="checkbox"/> Identify boundary conditions	Appendix C
<input type="checkbox"/> Confirmation of adequate domestic supply and pressure	N/A
<input type="checkbox"/> Confirmation of adequate fire flow protection and confirmation that fire flow is calculated as per the Fire Underwriter’s Survey. Output should show available fire flow at locations throughout the development.	Appendix C
<input type="checkbox"/> Provide a check of high pressures. If pressure is found to be high, an assessment is required to confirm the application of pressure reducing valves.	N/A
<input type="checkbox"/> Definition of phasing constraints. Hydraulic modeling is required to confirm servicing for all defined phases of the project including the ultimate design	N/A
<input type="checkbox"/> Address reliability requirements such as appropriate location of shut-off valves	N/A
<input type="checkbox"/> Check on the necessity of a pressure zone boundary modification.	N/A
<input type="checkbox"/> Reference to water supply analysis to show that major infrastructure is capable of delivering sufficient water for the proposed land use. This includes data that shows that the expected demands under average day, peak hour and fire flow conditions provide water within the required pressure range	Appendix C, Section 4.2

<input type="checkbox"/> Description of the proposed water distribution network, including locations of proposed connections to the existing system, provisions for necessary looping, and appurtenances (valves, pressure reducing valves, valve chambers, and fire hydrants) including special metering provisions.	Site Servicing Plan (C101)
<input type="checkbox"/> Description of off-site required feeder mains, booster pumping stations, and other water infrastructure that will be ultimately required to service proposed development, including financing, interim facilities, and timing of implementation.	N/A
<input type="checkbox"/> Confirmation that water demands are calculated based on the City of Ottawa Design Guidelines.	Appendix C
<input type="checkbox"/> Provision of a model schematic showing the boundary conditions locations, streets, parcels, and building locations for reference.	N/A

4.3 Development Servicing Report: Wastewater

Criteria	Location (if applicable)
<input type="checkbox"/> Summary of proposed design criteria (Note: Wet-weather flow criteria should not deviate from the City of Ottawa Sewer Design Guidelines. Monitored flow data from relatively new infrastructure cannot be used to justify capacity requirements for proposed infrastructure).	N/A
<input type="checkbox"/> Confirm consistency with Master Servicing Study and/or justifications for deviations.	N/A
<input type="checkbox"/> Consideration of local conditions that may contribute to extraneous flows that are higher than the recommended flows in the guidelines. This includes groundwater and soil conditions, and age and condition of sewers.	N/A
<input type="checkbox"/> Description of existing sanitary sewer available for discharge of wastewater from proposed development.	Section 5.2 Proposed Sanitary Sewer

<input type="checkbox"/> Verify available capacity in downstream sanitary sewer and/or identification of upgrades necessary to service the proposed development. (Reference can be made to previously completed Master Servicing Study if applicable)	Section 5.3 Proposed Sanitary Design
<input type="checkbox"/> Calculations related to dry-weather and wet-weather flow rates from the development in standard MOE sanitary sewer design table (Appendix 'C') format.	N/A
<input type="checkbox"/> Description of proposed sewer network including sewers, pumping stations, and forcemains.	Section 5.2 Proposed Sanitary Sewer
<input type="checkbox"/> Discussion of previously identified environmental constraints and impact on servicing (environmental constraints are related to limitations imposed on the development in order to preserve the physical condition of watercourses, vegetation, soil cover, as well as protecting against water quantity and quality).	N/A
<input type="checkbox"/> Pumping stations: impacts of proposed development on existing pumping stations or requirements for new pumping station to service development.	N/A
<input type="checkbox"/> Forcemain capacity in terms of operational redundancy, surge pressure and maximum flow velocity.	N/A
<input type="checkbox"/> Identification and implementation of the emergency overflow from sanitary pumping stations in relation to the hydraulic grade line to protect against basement flooding.	N/A
<input type="checkbox"/> Special considerations such as contamination, corrosive environment etc.	N/A

4.4 Development Servicing Report: Stormwater Checklist

Criteria	Location (if applicable)
<input type="checkbox"/> Description of drainage outlets and downstream constraints including legality of outlets (i.e. municipal drain, right-of-way, watercourse, or private property)	Section 6.0 Stormwater Sewer Design & Section 7.0 Proposed Stormwater Management
<input type="checkbox"/> Analysis of available capacity in existing public infrastructure.	N/A
<input type="checkbox"/> A drawing showing the subject lands, its surroundings, the receiving watercourse, existing drainage patterns, and proposed drainage pattern.	Pre & Post-Development Plans
<input type="checkbox"/> Water quantity control objective (e.g. controlling post-development peak flows to pre-development level for storm events ranging from the 2 or 5-year event (dependent on the receiving sewer design) to 100-year return period); if other objectives are being applied, a rationale must be included with reference to hydrologic analyses of the potentially affected subwatersheds, taking into account long-term cumulative effects.	Section 6.0 Stormwater Sewer Design & Section 7.0 Proposed Stormwater Management
<input type="checkbox"/> Water Quality control objective (basic, normal or enhanced level of protection based on the sensitivities of the receiving watercourse) and storage requirements.	Section 6.0 Stormwater Sewer Design & Section 7.0 Proposed Stormwater Management
<input type="checkbox"/> Description of the stormwater management concept with facility locations and descriptions with references and supporting information.	Section 6.0 Stormwater Sewer Design & Section 7.0 Proposed Stormwater Management
<input type="checkbox"/> Set-back from private sewage disposal systems.	N/A
<input type="checkbox"/> Watercourse and hazard lands setbacks.	N/A
<input type="checkbox"/> Record of pre-consultation with the Ontario Ministry of Environment and the Conservation Authority that has jurisdiction on the affected watershed.	N/A
<input type="checkbox"/> Confirm consistency with sub-watershed and Master Servicing Study, if applicable study exists.	N/A
<input type="checkbox"/> Storage requirements (complete with calculations) and conveyance capacity for minor events (1:5-year return period) and major events (1:100-year return period).	Appendix G

<input type="checkbox"/> Identification of watercourses within the proposed development and how watercourses will be protected, or, if necessary, altered by the proposed development with applicable approvals.	Site Grading Plan
<input type="checkbox"/> Calculate pre-and post development peak flow rates including a description of existing site conditions and proposed impervious areas and drainage catchments in comparison to existing conditions.	Section 7.0 Proposed Stormwater Management Appendix G
<input type="checkbox"/> Any proposed diversion of drainage catchment areas from one outlet to another.	Section 6.0 Stormwater Sewer Design & Section 7.0 Proposed Stormwater Management
<input type="checkbox"/> Proposed minor and major systems including locations and sizes of stormwater trunk sewers, and stormwater management facilities.	Section 6.0 Stormwater Sewer Design & Section 7.0 Proposed Stormwater Management
<input type="checkbox"/> If quantity control is not proposed, demonstration that downstream system has adequate capacity for the post-development flows up to and including the 100-year return period storm event.	N/A
<input type="checkbox"/> Identification of potential impacts to receiving watercourses	N/A
<input type="checkbox"/> Identification of municipal drains and related approval requirements.	N/A
<input type="checkbox"/> Descriptions of how the conveyance and storage capacity will be achieved for the development.	Section 6.0 Stormwater Sewer Design & Section 7.0 Proposed Stormwater Management
<input type="checkbox"/> 100-year flood levels and major flow routing to protect proposed development from flooding for establishing minimum building elevations (MBE) and overall grading.	Site Grading Plan (C101)
<input type="checkbox"/> Inclusion of hydraulic analysis including hydraulic grade line elevations.	N/A

<input type="checkbox"/> Description of approach to erosion and sediment control during construction for the protection of receiving watercourse or drainage corridors.	Section 8.0 Sediment & Erosion Control
<input type="checkbox"/> Identification of floodplains – proponent to obtain relevant floodplain information from the appropriate Conservation Authority. The proponent may be required to delineate floodplain elevations to the satisfaction of the Conservation Authority if such information is not available or if information does not match current conditions.	N/A
<input type="checkbox"/> Identification of fill constraints related to floodplain and geotechnical investigation.	N/A

4.5 Approval and Permit Requirements: Checklist

The Servicing Study shall provide a list of applicable permits and regulatory approvals necessary for the proposed development as well as the relevant issues affecting each approval. The approval and permitting shall include but not be limited to the following:

Criteria	Location (if applicable)
<input type="checkbox"/> Conservation Authority as the designated approval agency for modification of floodplain, potential impact on fish habitat, proposed works in or adjacent to a watercourse, cut/fill permits and Approval under Lakes and Rivers Improvement Act. The Conservation Authority is not the approval authority for the Lakes and Rivers Improvement Act. Where there are Conservation Authority regulations in place, approval under the Lakes and Rivers Improvement Act is not required, except in cases of dams as defined in the Act.	N/A
<input type="checkbox"/> Application for Certificate of Approval (CofA) under the Ontario Water Resources Act.	N/A
<input type="checkbox"/> Changes to Municipal Drains.	N/A
<input type="checkbox"/> Other permits (National Capital Commission, Parks Canada, Public Works and Government Services Canada, Ministry of Transportation etc.)	N/A

4.6 Conclusion Checklist

Criteria	Location (if applicable)
<input type="checkbox"/> Clearly stated conclusions and recommendations	Section 9.0 Summary Section 10.0 Recommendations
<input type="checkbox"/> Comments received from review agencies including the City of Ottawa and information on how the comments were addressed. Final sign-off from the responsible reviewing agency.	All are stamped
<input type="checkbox"/> All draft and final reports shall be signed and stamped by a professional Engineer registered in Ontario	All are stamped