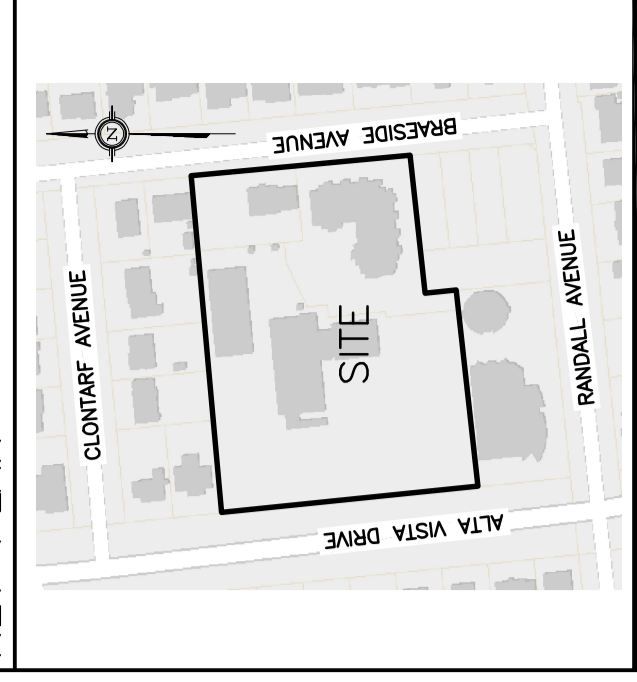


LEGEND

- CB CATCH-BASIN
- MH STORM MANHOLE
- CB/MH CATCH-BASIN/MANHOLE
- MH SANITARY MANHOLE
- VC VALVE CHAMBER
- CS CURB STOP & STANDPOST
- VB VALVE & VALVE BOX
- FH FIRE HYDRANT
- SAN SANITARY SEWER
- ST STORM SEWER
- WS/WM WATER SERVICE/WATERMAIN
- SPL SPRINKLINE OF PIPE
- INV INVERT OF PIPE
- WATER METER WATER METER
- REMO WATER METER REMOVE WATER METER
- FLL FINISHED FLOOR ELEVATION
- TOP TOP OF FOUNDATION
- BFL BASEMENT FLOOR ELEVATION
- USF UNDERSIDE OF FOOTING
- PROPERTY LINE PROPERTY LINE
- ROAD CUT REINSTATEMENT ROAD CUT REINSTATEMENT

KEY PLAN



No.	DATE	REVISION
2	OCT 25-21	ISSUED FOR APPROVAL
1	OCT 15-21	PRELIMINARY

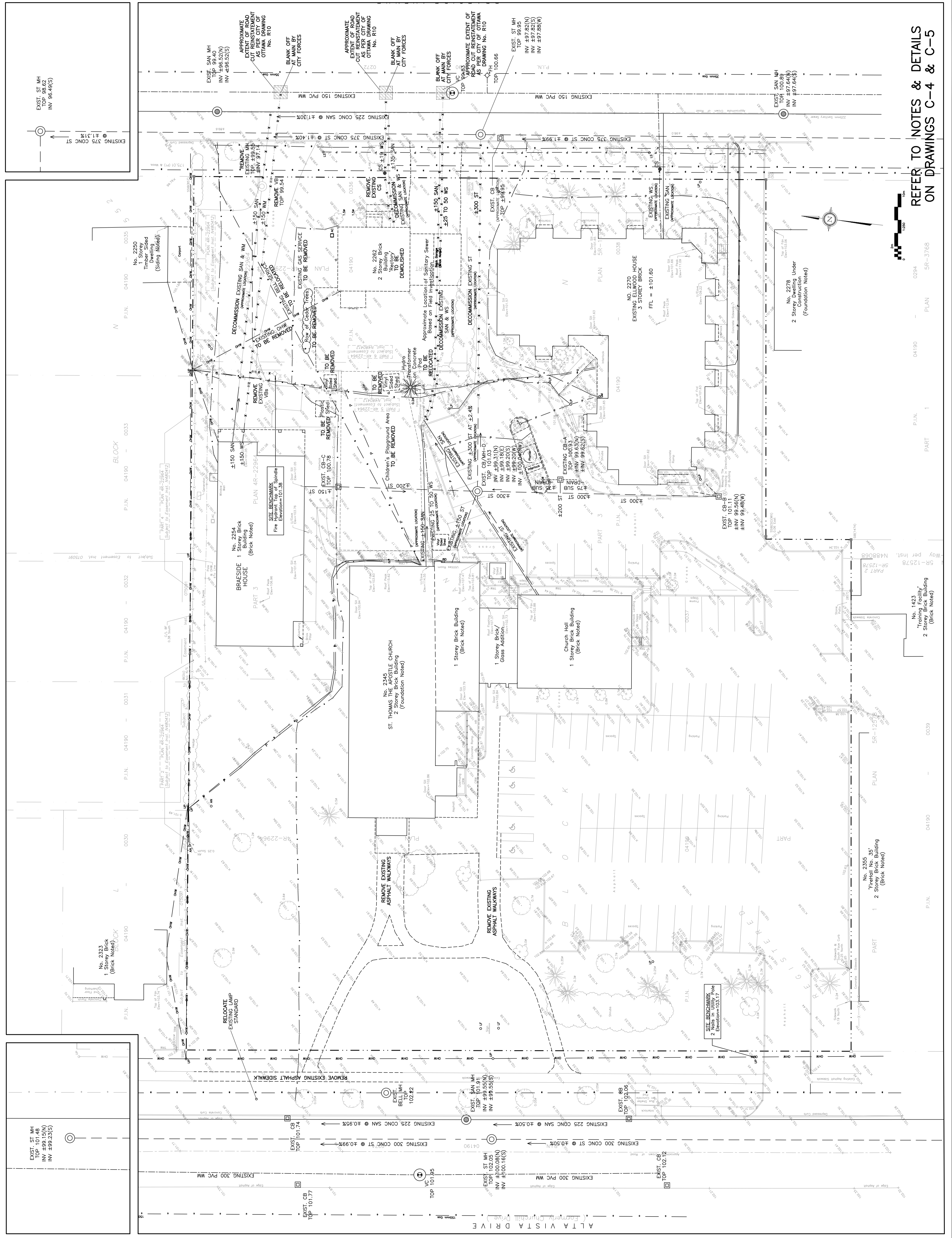
D. B. GRAY ENGINEERING INC.
 700 Long Point Circle
 Ottawa, Ontario K1G 4G4
 613-425-8044
 d.gray@dbgrayengineering.com

ELLWOOD HOUSE EXTENSION & SITE IMPROVEMENTS
 38-UNIT 3-STORY APARTMENT BUILDING
 2262 BRAESIDE AVENUE
 & 2345 ALTA VISTA DRIVE
 OTTAWA, ONTARIO

EXISTING CONDITIONS, REMOVALS & DECOMMISSIONING

Engineer's Seal

 Drawn: D.B.G.
 H. Scale: 1:250
 V. Scale: 1:100
 Date: OCT 15-21
 Job No.: 21023
 Drawing No.: C-2 of 7
 NOT VALID UNLESS SIGNED & DATED



REFER TO NOTES & DETAILS ON DRAWINGS C-4 & C-5

0294 5R-3768 PLAN 04190 PART 1

0039 5R-12578 PLAN 04190 PART 1

0039 5R-12578 PLAN 04190 PART 1

0039 5R-12578 PLAN 04190 PART 1

0039 5R-12578 PLAN 04190 PART 1

0039 5R-12578 PLAN 04190 PART 1

0039 5R-12578 PLAN 04190 PART 1

0039 5R-12578 PLAN 04190 PART 1

0039 5R-12578 PLAN 04190 PART 1

0039 5R-12578 PLAN 04190 PART 1

0039 5R-12578 PLAN 04190 PART 1

0039 5R-12578 PLAN 04190 PART 1

0039 5R-12578 PLAN 04190 PART 1

0039 5R-12578 PLAN 04190 PART 1

0039 5R-12578 PLAN 04190 PART 1

0039 5R-12578 PLAN 04190 PART 1

0039 5R-12578 PLAN 04190 PART 1

0039 5R-12578 PLAN 04190 PART 1