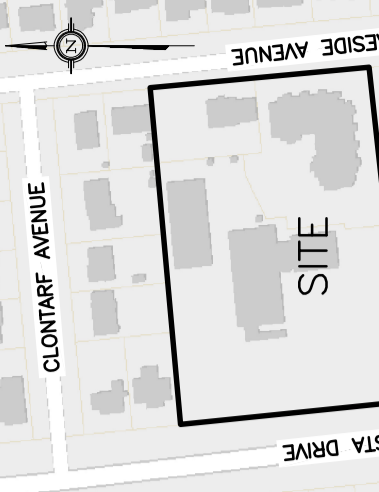


LEGEND

- CB CATCH-BASIN
- MH STORM MANHOLE
- CB/MH CATCH-BASIN/MANHOLE
- MH SANITARY MANHOLE
- VC VALVE CHAMBER
- CS CURB STOP & STANPOST
- VB VALVE & VALVE BOX
- FH FIRE HYDRANT
- SAN SANITARY SEWER
- ST STORM SEWER
- WS/WM WATER SERVICE/WATERMAIN
- SPL SPRINGLINE OF PIPE
- INV INVERT OF PIPE
- WATER METER
- REMOVAL WATER METER
- FIL FINISHED FLOOR ELEVATION
- TOP TOP OF FOUNDATION
- BFL BASEMENT FLOOR ELEVATION
- USF UNDERSIDE OF FOOTING
- PROPERTY LINE
- ROAD CUT REINSTATEMENT

KEY PLAN



No.	DATE	REVISION
2	OCT 25-21	ISSUED FOR APPROVAL
1	OCT 15-21	PRELIMINARY

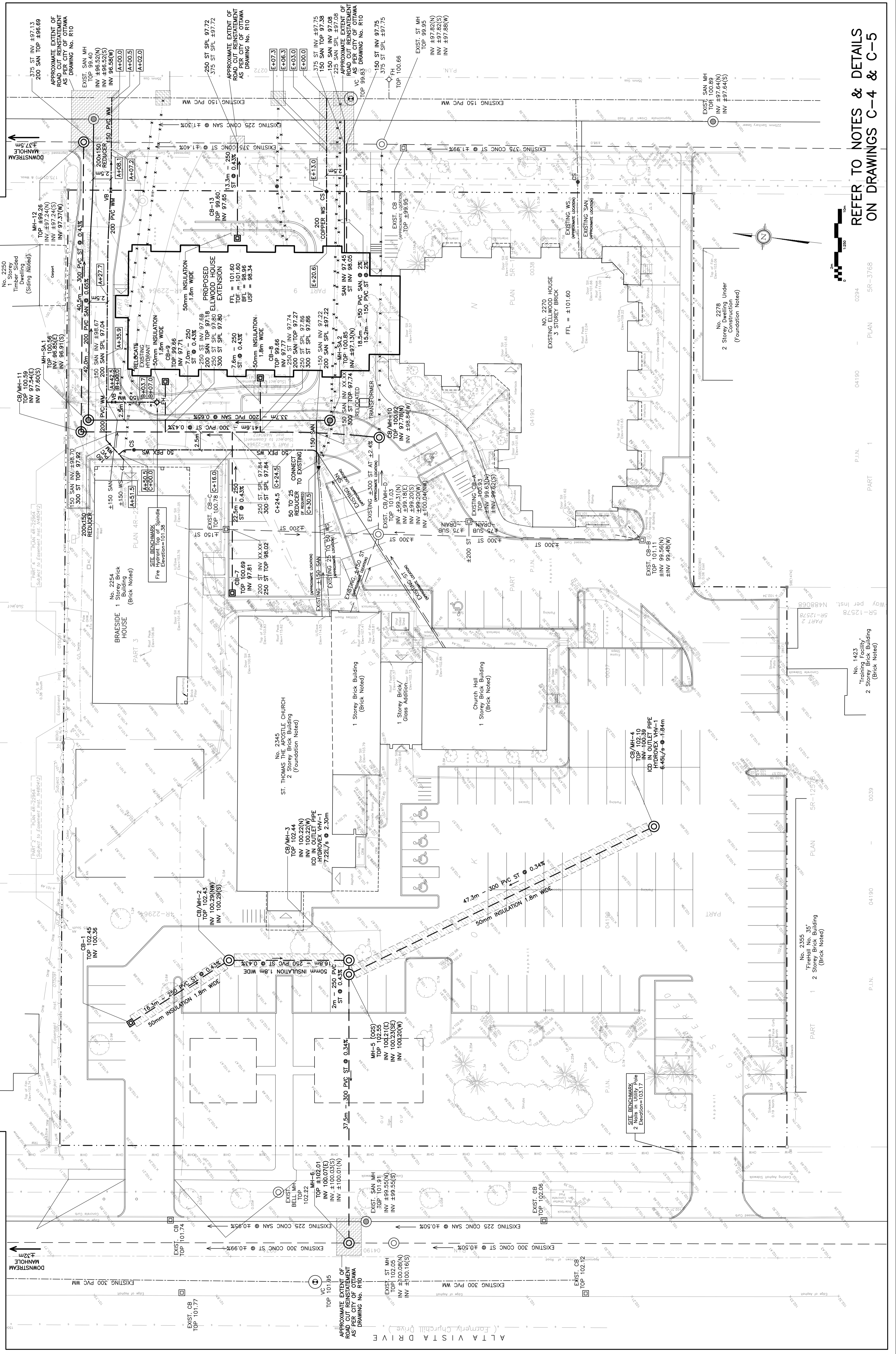
**D. B. GRAY ENGINEERING INC.**  
Professional Engineers  
700 Long Point Circle  
Ottawa, Ontario K1L 1A4  
613-425-8044  
d.gray@dbgreyengineering.com

**ELLWOOD HOUSE EXTENSION  
& SITE IMPROVEMENTS**  
38-UNIT 3-STORY APARTMENT BUILDING  
2262-2270 BRAESIDE AVENUE  
& 2345 ALTA VISTA DRIVE  
OTTAWA, ONTARIO

**SITE SERVICING PLAN**

Engineer's Seal  
D.B.G.  
H. Scale 1:250  
V. Scale 1:250  
Date OCT 15-21  
Job No. 21023  
Drawing No. **C-1** of 7  
NOT VALID UNLESS SIGNED & DATED

SIZE, DEPTH AND LOCATION OF EXISTING SERVICES, UTILITIES AND STRUCTURES AS INDICATED ARE FOR INFORMATION ONLY. THESE ARE DERIVED FROM AVAILABLE INFORMATION AND MUST BE CONFIRMED ON SITE. UNDERGROUND LOCATES SHALL BE CONDUCTED PRIOR TO THE COMMENCEMENT OF ANY EXCAVATION. CONFIRM LOCATES CAREFULLY AND REPORT ANY DIFFERENCES TO THE ENGINEER.



REFER TO NOTES & DETAILS ON DRAWINGS C-4 & C-5

PLAN 04190 PART 1

PLAN 04190 PART 1

PLAN 04190 PART 1

PLAN 04190 PART 1

PLAN 04190 PART 1

PLAN 04190 PART 1

PLAN 04190 PART 1

PLAN 04190 PART 1

PLAN 04190 PART 1

PLAN 04190 PART 1

PLAN 04190 PART 1