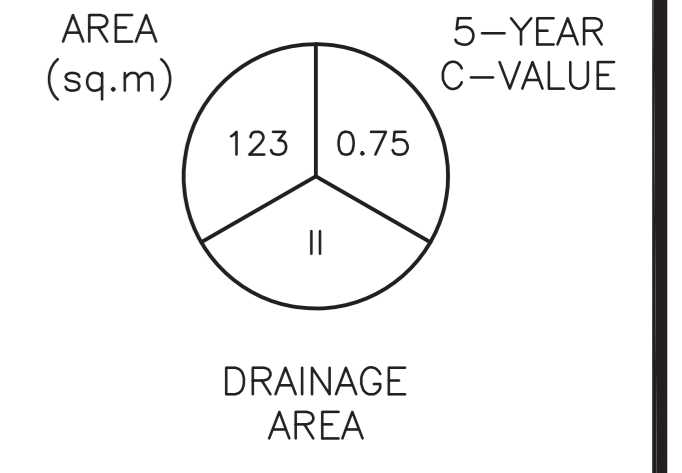


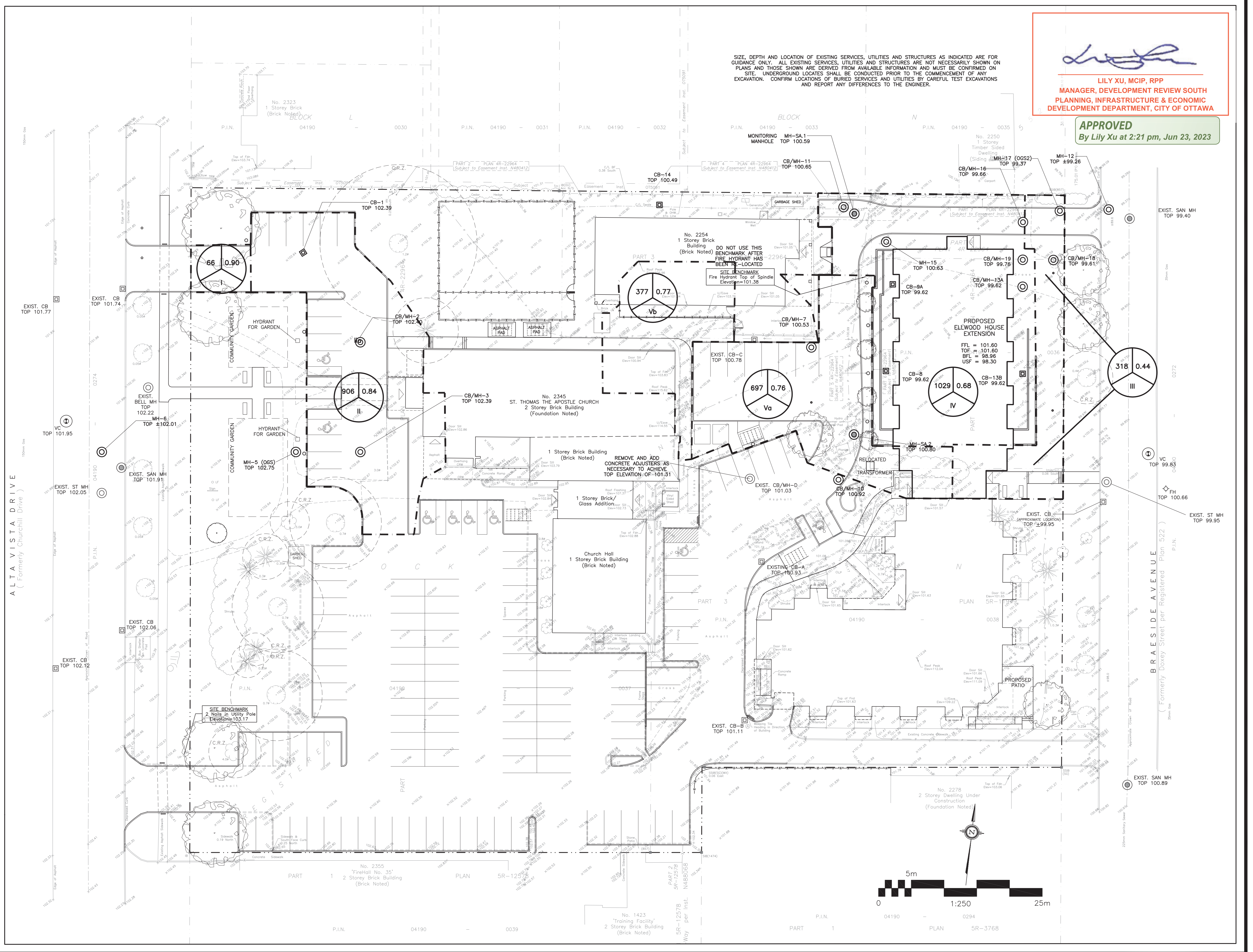
LEGEND



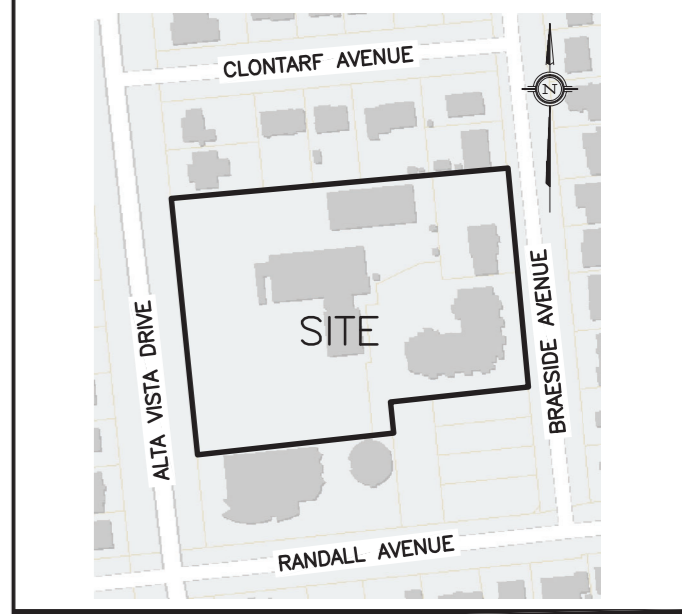
Lily Xu
LILY XU, MCIP, RPP
MANAGER, DEVELOPMENT REVIEW SOUTH
PLANNING, INFRASTRUCTURE & ECONOMIC
DEVELOPMENT DEPARTMENT, CITY OF OTTAWA

APPROVED
 By Lily Xu at 2:21 pm, Jun 23, 2023

SIZE, DEPTH AND LOCATION OF EXISTING SERVICES, UTILITIES AND STRUCTURES AS INDICATED ARE FOR GUIDANCE ONLY. ALL EXISTING SERVICES, UTILITIES AND STRUCTURES ARE NOT NECESSARILY SHOWN ON PLANS AND THOSE SHOWN ARE DERIVED FROM AVAILABLE INFORMATION AND MUST BE CONFIRMED ON SITE. UNDERGROUND LOCATES SHALL BE CONDUCTED PRIOR TO THE COMMENCEMENT OF ANY EXCAVATION. CONFIRM LOCATIONS OF BURIED SERVICES AND UTILITIES BY CAREFUL TEST EXCAVATIONS AND REPORT ANY DIFFERENCES TO THE ENGINEER.



KEY PLAN



No.	DATE	REVISION
3	NOV 30-22	RE-ISSUED FOR APPROVAL
2	AUG 10-22	RE-ISSUED FOR APPROVAL
1	APR 14-22	ISSUED FOR APPROVAL

D. B. GRAY ENGINEERING INC.
 Stormwater Management - Grading & Drainage - Storm & Sanitary Sewers - Wetlands
 700 Long Point Circle 613-425-8044
 Ottawa, Ontario d.gray@dbgrayengineering.com

Project
ELLWOOD HOUSE EXTENSION
 38-UNIT 3-STORY APARTMENT BUILDING
 2262 BRAESIDE AVENUE
& SITE IMPROVEMENTS
 2262-2270 BRAESIDE AVENUE
 & 2345 ALTA VISTA DRIVE
 OTTAWA, ONTARIO

Drawing Title
STORMWATER MANAGEMENT DRAINAGE PLAN

Engineer's Seal

 NOT VALID UNLESS SIGNED & DATED

Drawn D.B.G.
 H. Scale 1:250
 V. Scale
 Date OCT 15-21
 Job No. 21028

Drawing No.
C-9
 of 10