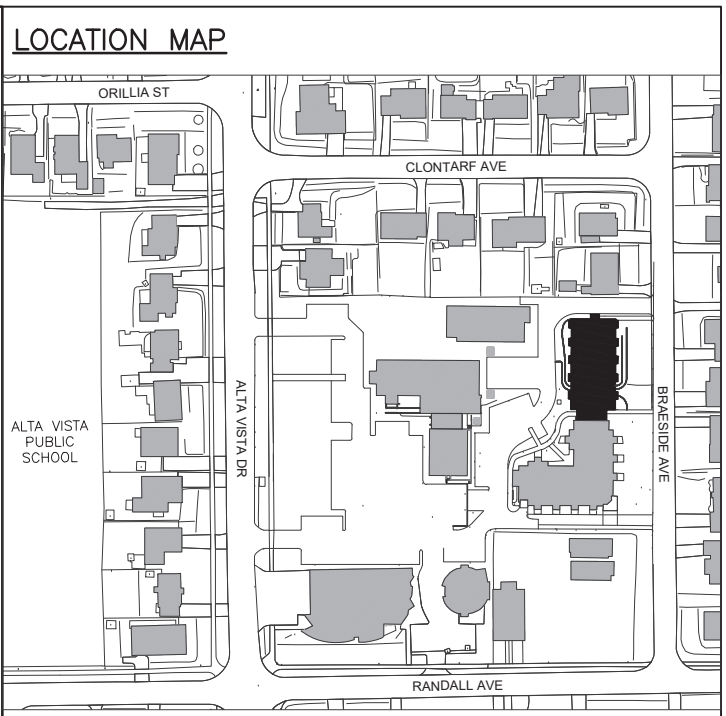


**GENERAL NOTES**

- THE CONTRACTOR SHALL VERIFY AND LOCATE ALL EXISTING SERVICES / UTILITIES IN THE FIELD PRIOR TO ANY CONSTRUCTION.
- THE CONTRACTOR SHALL INSTALL AND MAINTAIN TREE PROTECTION FENCING AS NOTED ON THE DRAWING DURING CONSTRUCTION PHASE.
- ALL LAYOUT FOR PROPOSED PLANT MATERIAL TO BE VERIFIED AND APPROVED ON SITE BY PROJECT MANAGER PRIOR TO ANY PLANTING.
- REPORT ANY DISCREPANCIES PRIOR TO COMMENCING WORK. NO RESPONSIBILITY IS BORN BY THE OWNER AND PROJECT MANAGER FOR UNKNOWN SUBSURFACE CONDITIONS.
- REINSTATE ALL AREAS AND ITEMS THAT ARE DAMAGED ON SITE AND REPORT ANY ERRORS AND/OR OMISSIONS TO THE PROJECT MANAGER.
- WITH THE EXCEPTION OF THE CITY OF OTTAWA CONSTRUCTION SPECIFICATION & STANDARD DETAILS, ONTARIO PROVINCIAL STANDARDS (OPSD) & STANDARD SPECIFICATIONS (OPSD) SHALL APPLY.
- THIS DRAWING IS TO BE READ AND INTERPRETED IN CONJUNCTION WITH THE CONTRACT DRAWINGS AND SPECIFICATIONS.

**PLANTING NOTES**

- CONTRACTOR TO VERIFY LOCATION OF ALL UTILITIES PRIOR TO EXCAVATION.
- LOCATION OF ALL PLANT MATERIAL TO BE STAKED BY THE CONTRACTOR AND VERIFIED IN THE FIELD BY THE PROJECT MANAGER PRIOR TO THE EXCAVATION OF TREE PITS.
- ALL PLANT MATERIAL SHALL BE NURSERY GROWN STOCK UNLESS OTHERWISE NOTED.
- DECIDUOUS TREES TO HAVE A MINIMUM 1800 CLEAR STEM ABOVE GRADE.
- ALL PLANT MATERIAL SHALL BE WARRANTED FOR TWO YEARS FROM THE DATE OF PERFORMANCE ACCEPTANCE AS DETERMINED BY THE PROJECT MANAGER.
- ALL STEEL STAKING POSTS TO BE REMOVED AFTER ONE GROWING SEASON UNLESS OTHERWISE DIRECTED BY THE PROJECT MANAGER.
- CONTRACTOR TO MAKE GOOD ALL EXISTING AREAS DAMAGED BY HIS OR HER WORK TO THE SATISFACTION OF THE PROJECT MANAGER.
- QUERCUS SPECIES TO BE SPRING DUG SPECIMENS.
- ANY PROPOSED PLANT MATERIAL SUBSTITUTIONS SHALL BE MADE WITH PLANTS OF EQUIVALENT OVERALL FORM, HEIGHT, HABIT, FLOWER, LEAF, COLOUR AND CULTURE AND ONLY AFTER WRITTEN APPROVAL FROM THE PROJECT MANAGER.



NO.	DATE	DESCRIPTION
03	APR 19/22	RESUBMISSION #1 FOR SPA
02	OCT 13/21	SPA SUBMISSION
01	SEP 21/21	CONCEPT SITE PLAN APPROVED BY CLIENT



COLIZZA BRUNI architecture

78 CHAMBERLAIN AVE • OTTAWA • ONTARIO • K1S 1V9  
T 613.236.2944 • F 613.236.6777 • www.colizzabruni.com

PROJECT NAME  
**ELLWOOD HOUSE EXTENSION**

2262 BRAESIDE AVENUE, OTTAWA, ON  
DRAWING TITLE  
**LANDSCAPE PLAN**

SCALE  
AS NOTED  
DRAWN BY  
DATE  
4/25/22  
PROJECT NO.  
#001-16

**D07-12-21-0174**  
**PLAN NO.: 18637**

**APPROVED**  
By Lily Xu at 1:21 pm, Jun 23, 2023

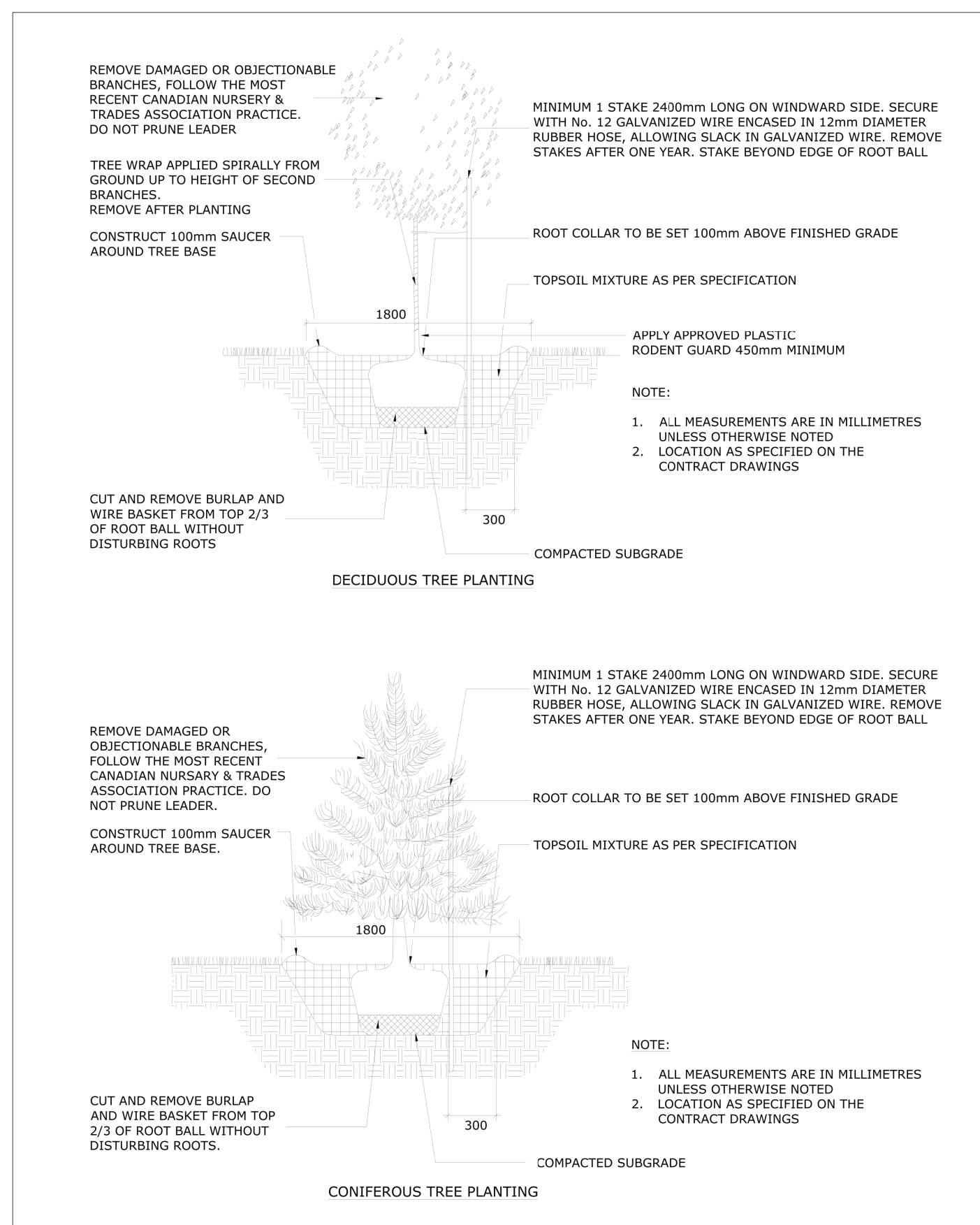
*Lily Xu*  
**LILY XU, MCIP, RPP**  
MANAGER, DEVELOPMENT REVIEW SOUTH  
PLANNING, INFRASTRUCTURE & ECONOMIC  
DEVELOPMENT DEPARTMENT, CITY OF OTTAWA

**1 LANDSCAPE PLAN**  
1:250

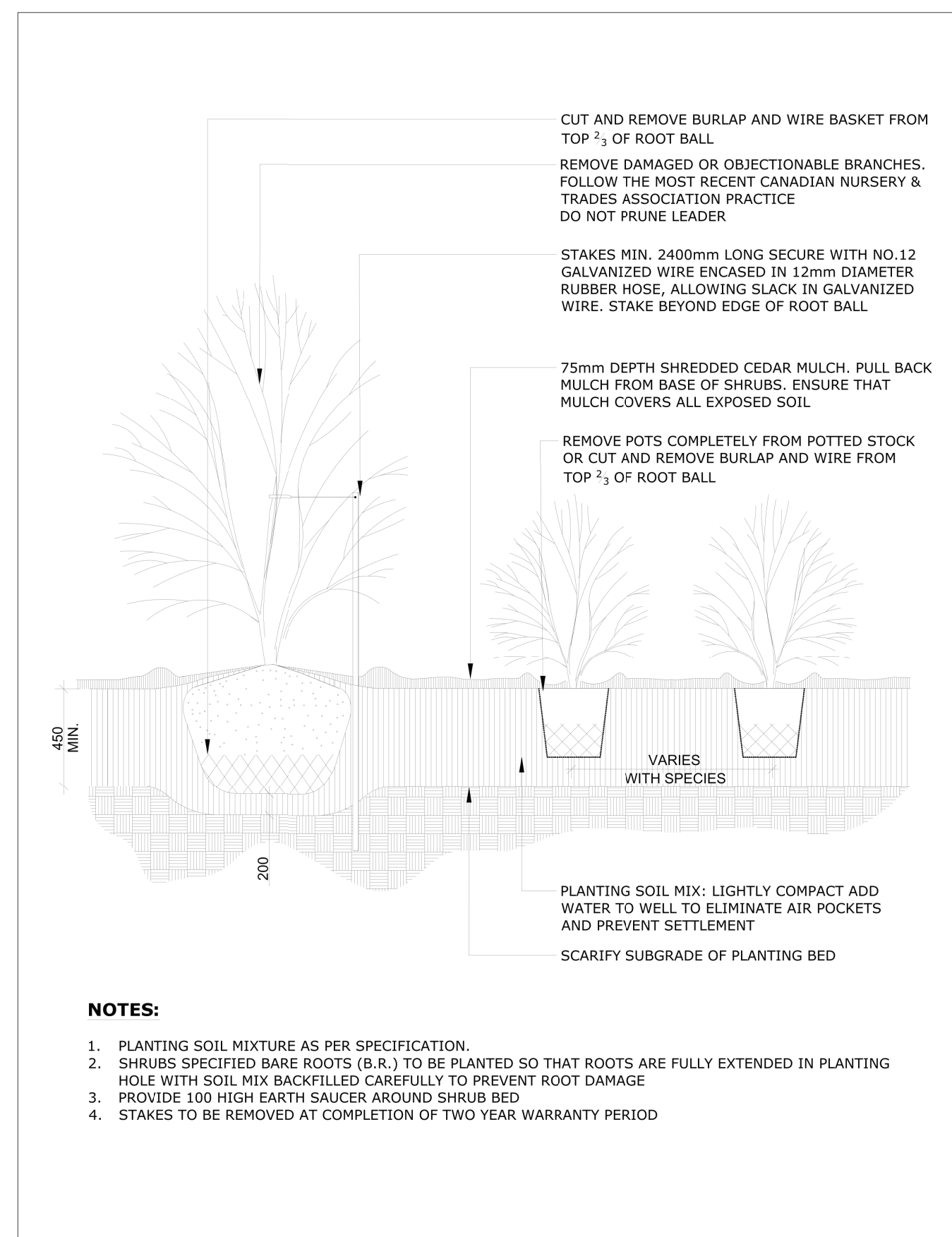
- DRAWING LEGEND:**
- EXISTING TREE TO BE RETAINED AND PROTECTED - REFER TO TREE CONSERVATION REPORT
  - TREES TO BE REMOVED: TOTAL 11 - REFER TO TREE CONSERVATION REPORT
  - TREES TO BE RELOCATED: TOTAL 1\* - REFER TO TREE CONSERVATION REPORT
  - EXISTING SHRUB PLANTING BED TO BE RETAINED AND PROTECTED
  - EXISTING SHRUB PLANTING BED TO BE REMOVED
  - PROPOSED CONIFEROUS TREE: TOTAL 12 (SEE DETAIL 1/L2)
  - PROPOSED DECIDUOUS TREE: TOTAL 12 (SEE DETAIL 1/L2)

- PROPOSED SHRUB PLANTING BED WITH DECORATIVE RIVER ROCK MULCH & WEED BARRIER FABRIC (SEE DETAIL 2/L2)
- PROPOSED PERENNIAL PLANTING BED WITH DECORATIVE RIVER ROCK MULCH & WEED BARRIER FABRIC (SEE DETAIL 3/L2)
- VINES
- EXISTING TURF TO BE RETAINED
- PROPOSED TURF - SOD
- DECORATIVE RIVERSTONE GROUND COVER TO BE LOCALLY SUPPLIED 1" RIVER WASHED STONE (WITH A WEED BARRIER OR LANDSCAPE FILTER FABRIC) SUPPLIED AND INSTALLED AT DEPTH OF 4"
- PROPOSED INTERLOCK PAVING
- EXISTING INTERLOCK PAVING
- PROPOSED BIKE RACK ON ASPHALT OR CONCRETE PAD
- EXISTING FENCE
- PROTECTIVE FENCING (TEMPORARY)
- RETAINING WALL (SEE GRADING PLAN)
- DEPRESSED CURB AND TWSI
- CROSSWALK

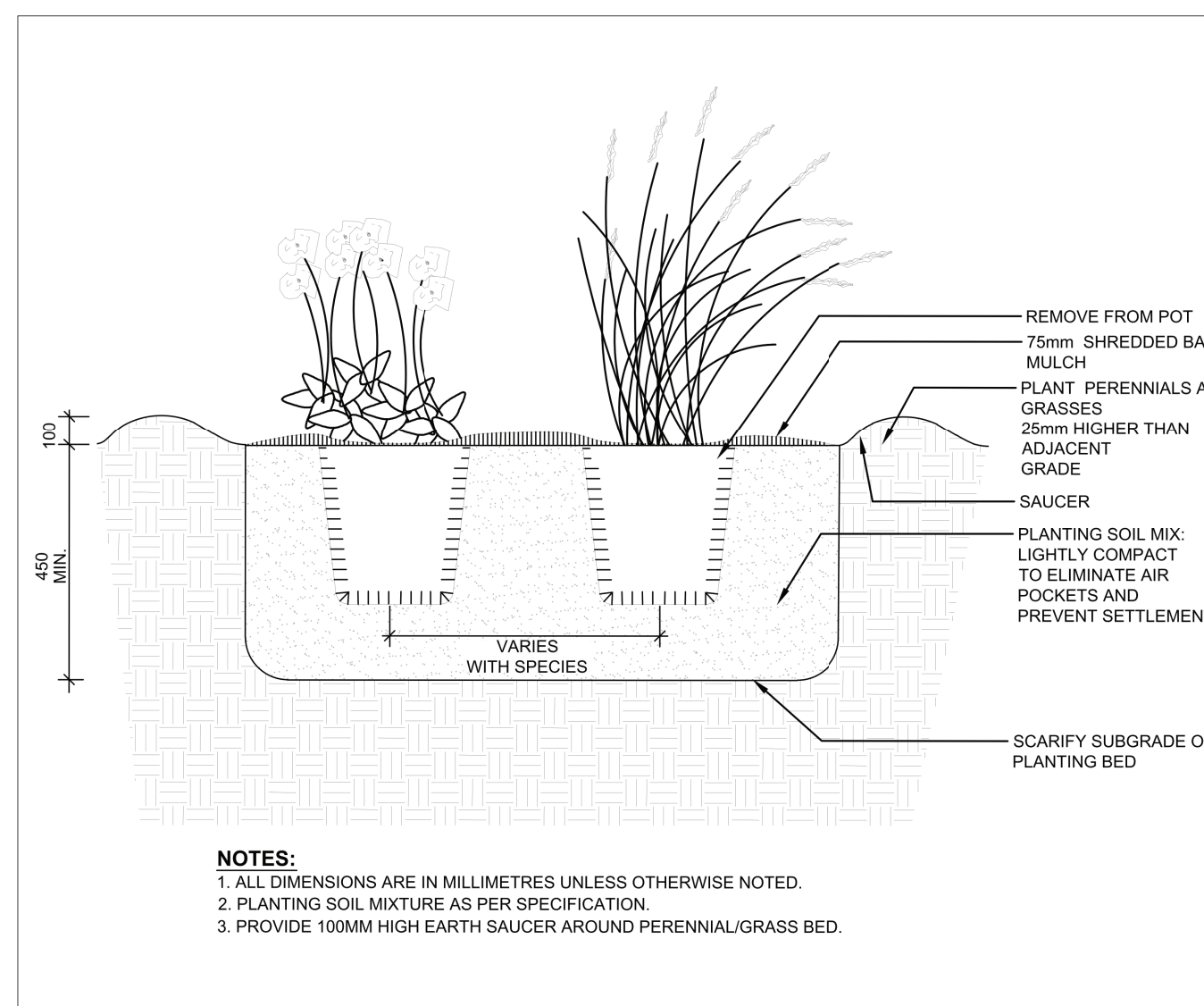
KEY	QTY	BOTANICAL NAME	COMMON NAME	CAL./HT.	CONDITION/REMARKS	KEY	QTY	BOTANICAL NAME	COMMON NAME	CAL./HT.	CONDITION/REMARKS
<b>DECIDUOUS TREES</b>											
Ar	1	ACER RUBRUM	RED MAPLE (RELOCATED EXISTING TREE)	125MM	W/B	Ca	6	CARAGANA ARBORESCENS 'SUTHERLAND'	SUTHERLAND CARAGANA	180CM HT.	CONTAINER
Co	1	CELTIS OCCIDENTALIS	COMMON HACKBERRY	70MM	W/B	Ea	3	EUONYMUS ALATUS 'COMPACTUS'	DWARF BURNING BUSH	30CM HT.	CONTAINER
Ot	2	GLEDITSIA TRIACANTHOS 'SHADEMASTER'	SHADEMASTER HONEY LOCUST	50MM	W/B	Js	32	JUNIPERUS SABINA 'TAMARISCIFOLIA'	TAM JUNIPER	30CM HT.	CONTAINER
Om	1	QUERCUS MACROCARPA	BUR OAK	70MM	W/B	Po	3	PHYSCARPUS OPULEFOLIUS	COMMON NINEBARK	50CM HT.	CONTAINER
Qr	1	QUERCUS RUBRA	RED OAK	70MM	W/B	RaL	36	RHUS ARMATA 'ORO-LOW'	GRO-LOW FRAGRANT SUMAC	30CM HT.	CONTAINER
Tc	2	TILIA CORDATA	LITTLELEAF LINDEN	70MM	W/B	Rr	12	ROSA RUGOSA	RUGOSA ROSE	30CM HT.	CONTAINER
Sr	4	SYRINGA RETICULATA	JAPANESE TREE LILAC	50MM	W/B	Ra	44	RIBES ALPINUM	ALPINE CURRANT	50CM HT.	CONTAINER
						Sv	2	SYRINGA VULGARIS	COMMON LILAC	180CM HT.	CONTAINER
<b>PERENNIALS</b>											
Cx	39	CALAMAGROSTIS x ACUTIFLORA 'KARL FOERSTER'	KARL FOERSTER REED GRASS	1 GAL.	CONTAINER	Ep	45	ECHINACEA PURPURA	CONEFLOWER	15CM HT.	CONTAINER
He	100	HEMEROCALLIS	DAYLILY	15CM HT.	CONTAINER	Dy	15	DAYLILY	DAYLILY	15CM HT.	CONTAINER
Ho	40	HOSTA	PLANTAIN LILY	15CM HT.	CONTAINER	Pv	13	PANICUM VIRGATUM 'HEAVY METAL'	BLUE SWITCH GRASS	1 GAL.	CONTAINER
Rh	15	RUDBECKIA HIRTA	BLACKED-EYED SUSAN	15CM HT.	CONTAINER						
<b>CONIFEROUS TREES</b>											
To	22	THUJA OCCIDENTALIS	EASTERN WHITE CEDAR	1.8M HEIGHT	W/B						
ToS	3	THUJA OCCIDENTALIS 'SMARAGO'	EMERALD GREEN CEDAR	1.8M HEIGHT	W/B						
<b>VINES</b>											
Pq	30	PARTHENOISSIS QUINQUEFOLIA	VIRGINIA CREEPER	1 GAL.	CONTAINER						



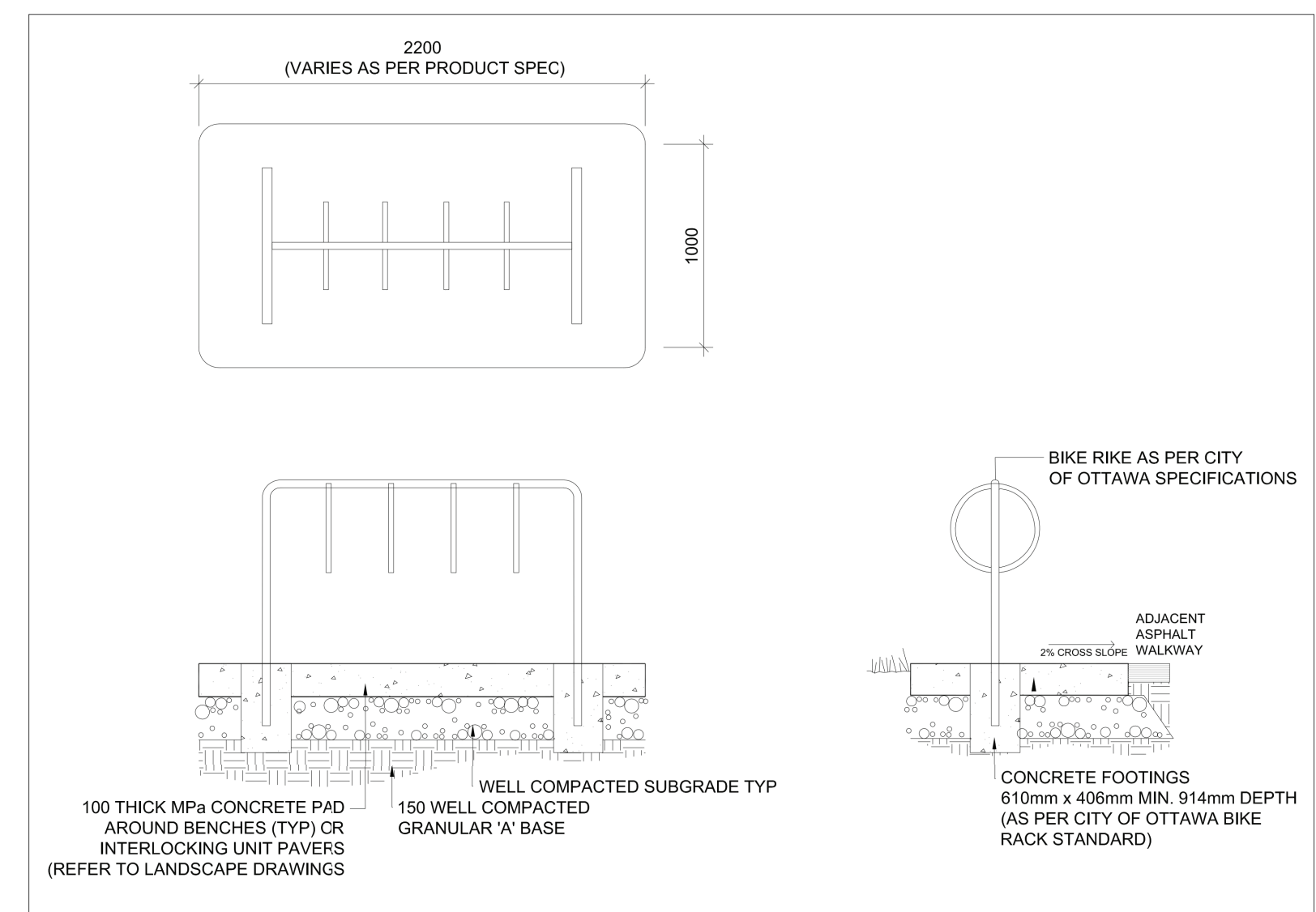
1 PLANTING TRENCH WELL DRAINED SOILS (LOT)  
NTS



2 CONTINUOUS SHRUB BED PLANTING  
NTS



3 PERENNIAL AND ORNAMENTAL GRASS PLANTING  
NTS



4 CONCRETE PAD FOR CITY OF OTTAWA STANDARD BIKE RACK  
NTS

**SPECIFICATIONS:**

**A. SEGMENTAL LANDSCAPE PLANTER WALL**

- 1.0 GENERAL
1. SCOPE OF WORK
1. THE WORK COVERED BY THIS SECTION INCLUDES THE FURNISHING OF ALL LABOUR, MATERIALS, EQUIPMENT, INSPECTION AND CONSTRUCTION OF A MODULAR CONCRETE SEGMENTAL RETAINING WALL ("SRW") INCLUDING DRAINAGE SYSTEM AND GEOSYNTHETIC REINFORCEMENT. THE WORK INCLUDED IN THIS SECTION CONSISTS OF, BUT IS NOT LIMITED, TO THE FOLLOWING:
- EXCAVATION AND FOUNDATION SOIL PREPARATION.
  - FURNISH AND PLACEMENT OF THE LEVELING BASE.
  - FURNISH AND PLACEMENT OF THE CONCRETE STARTER UNITS.
  - FURNISH AND PLACEMENT OF GEOTEXTILE.
  - FURNISH AND PLACEMENT OF SRW UNITS.
  - FURNISH AND PLACEMENT OF ROOT BARRIER.
  - FURNISH FINAL GRADING.

2.0 REFERENCES

1. ALL REFERENCES TO LATEST EDITION OF STANDARDS:
- ONTARIO PROVINCIAL STANDARD SPECIFICATIONS (OPSS)
    - OPSS 1010, AGGREGATES – GRANULAR A, B, M, AND SELECT SUBGRADE MATERIALS
  - AMERICAN SOCIETY FOR TESTING AND MATERIALS (ASTM):
    - ASTM C131, TEST METHOD FOR RESISTANCE TO DEGRADATION OF SMALL SIZE COURSE AGGREGATES BY ABRASION AND IMPACTS IN THE LOS ANGELES MACHINE
    - ASTM C 140, SAMPLING AND TESTING CONCRETE MASONRY UNITS
    - ASTM C 979, STANDARD SPECIFICATION FOR PIGMENTS FOR INTEGRALLY COLOURED CONCRETE.
    - ASTM C 1372, STANDARD SPECIFICATIONS FOR SEGMENTAL RETAINING WALL UNITS
    - ASTM D 698, STANDARD TEST METHOD FOR LABORATORY COMPACTION CHARACTERISTICS OF SOIL USING STANDARD EFFORT (12,000 FT-LBF/FT<sup>3</sup> (600 KN-M/M<sup>3</sup>)).
  - NATIONAL CONCRETE MASONRY ASSOCIATION (NCMA):
    - NCMA DESIGN MANUAL FOR SEGMENTAL RETAINING WALLS, SECOND EDITION.
    - NCMA TEK 2-4 – SPECIFICATIONS FOR SEGMENTAL RETAINING WALL UNITS.
    - NCMA SRW-2 – DETERMINATION OF SHEAR STRENGTH BETWEEN SEGMENTAL CONCRETE UNITS.

3.0 SUBMITTALS

1. SEGMENTAL RETAINING WALL:
- SAMPLES FOR VERIFICATION: THREE REPRESENTATIVE FULL-SIZE SAMPLES OF SRW. THICKNESS, COLOR AND FINISH THAT INDICATE THE RANGE OF COLOR VARIATION AND TEXTURE EXPECTED UPON PROJECT COMPLETION.
  - ACCEPTED SAMPLES BECOME THE STANDARD OF ACCEPTANCE FOR THE PRODUCT PRODUCED.
  - TEST RESULTS FROM AN INDEPENDENT TESTING LABORATORY FOR COMPLIANCE OF CONCRETE PAVERS WITH ASTM C1372.
  - MANUFACTURER'S CATALOG PRODUCT DATA, INSTALLATION INSTRUCTIONS, AND MATERIAL SAFETY DATA SHEETS FOR THE SAFE HANDLING OF THE SPECIFIED MATERIALS AND PRODUCTS.
2. LEVELING BASE:
- TEST RESULTS FROM AN INDEPENDENT TESTING LABORATORY FOR SIEVE ANALYSIS PER ASTM C136.

3.0 GEOTEXTILE FABRIC:

- PROVIDE PRODUCT DATA SHEETS.
- PROVIDE ONE (1) REPRESENTATIVE SAMPLE 150MM X 150MM

4.0 MATERIAL

1. SEGMENTAL RETAINING WALL ("SRW"), AND COPING
- BASIS-OF-DESIGN PRODUCT: SRW MODULAR, SOLID, DRY-CAST CONCRETE BLOCKS BASED ON:
    - PERMACON, LAFITT TANDEM WALL (OR APPROVED EQUIVALENT)
    - THE SPECIFIED PRODUCT NOTED ESTABLISH THE MINIMUM REQUIREMENTS THAT SUBSTITUTIONS MUST MEET TO BE CONSIDERED ACCEPTABLE.
    - REQUESTS FOR ALTERNATIVE PRODUCTS WILL NOT BE CONSIDERED DURING TENDER.
  - PRODUCT REQUIREMENTS:
    - SRW: LAFITT TANDEM WALL
    - COLOUR: AMBOISE BEIGE
    - FINISH: CHISELED
    - PROVIDE SRW MEETING THE REQUIREMENTS SET FORTH IN ASTM C1372.
    - PROVIDE SRW MEETING THE PHYSICAL PROPERTIES LISTED BELOW AS TESTED USING ASTM C140:
      - DIMENSIONAL TOLERANCE SHALL BE +/- 3 MM (1/8") FOR HEIGHT, WIDTH, AND LENGTH.
      - THE MINIMUM 28-DAY COMPRESSIVE STRENGTH OF 35 MPA (5000 PSI).
      - THE MAXIMUM MOISTURE ABSORPTION SHALL BE 1.0 KN/M<sup>3</sup>.
      - PROVIDE SRW UTILIZING AN INTEGRAL SHEAR KEY CONNECTION WITH OFFSET TO CREATE A VERTICAL WALL.
      - PROVIDE CONCRETE STARTER UNITS AS PART OF INSTALLATION.

1.1 ACCEPT ONLY PIGMENTS IN CONCRETE PAVERS CONFORMING TO ASTM C 979.

1. LEVELING BASE

- LEVELING BASE AGGREGATE TO BE COMPOSED OF INERT, CLEAN, TOUGH AND DURABLE PARTICLES OF NATURAL OR CRUSHED ROCK CAPABLE OF WITHSTANDING THE DELETERIOUS EFFECTS OF EXPOSURE TO WATER, FREEZE-THAW, HANDLING AND SPREADING.
- MATERIAL TO BE CAPABLE OF COMPACTING TO MINIMUM REQUIRED DENSITY.
- AGGREGATE SHALL HAVE A PERCENTAGE OF WEAR, BY THE LOS ANGELES TEST (ASTM C 131), OF NOT MORE THAN 50.
- THE AGGREGATE PARTICLES SHALL BE UNIFORM IN QUALITY, FREE FROM EXCESS OF FLAT AND ELONGATED PARTICLES.
- THE PARTICLES SHALL HAVE A GRADATION FALLING WITHIN THE STANDARD LIMITS FOR GRANULAR A AS OUTLINED IN MTO OPSS 1010.

2. GEOTEXTILE

- PROVIDE GEOTEXTILE MATERIAL CONFORMING TO THE FOLLOWING PERFORMANCE CHARACTERISTICS, MEASURED PER THE TEST METHODS REFERENCED:
  - 4 OZ., NONWOVEN NEEDLE PUNCHED GEOTEXTILE COMPOSED OF 100% POLYPROPYLENE STAPLE FIBERS THAT ARE INERT TO BIOLOGICAL DEGRADATION AND RESISTS NATURALLY ENCOUNTERED CHEMICALS, ALKALIS, AND ACIDS.
  - GRAB TENSILE STRENGTH: ASTM D 4632: 115 LBS.
  - GRAB TENSILE ELONGATION: ASTM D 4632: 50%
  - TRAPEZOIDAL TEAR: ASTM D4533: 50 LBS.
  - PUNCTURE: ASTM D4833: 65 LBS.
  - APPARENT OPENING SIZE: ASTM D 4751: 0.212 MM, 70 U.S. SIEVE
  - PERMITTIVITY: ASTM D 4491: 2.0 SEC -1
  - FLOW RATE: ASTM D 4491: 140 GAL/MIN/S.F.

3. CONCRETE ADHESIVE

- PROVIDE A CONCRETE ADHESIVE MANUFACTURED BY THE FOLLOWING (OR APPROVED EQUIVALENT):
  - LEPAGE: PL 9000 HEAVY DUTY CONSTRUCTION ADHESIVE
  - ALLIANCE: GATOR GLUE XP POLYURETHANE CONSTRUCTION ADHESIVE.

5.0 CONSTRUCTION

- EXAMINE AREAS INDICATED TO RECEIVE SRW FOR COMPLIANCE WITH REQUIREMENTS FOR INSTALLATION TOLERANCES AND OTHER CONDITIONS AFFECTING PERFORMANCE FOR THE FOLLOWING ITEMS:
  - VERIFY THAT SUBGRADE PREPARATION, COMPACTED DENSITY AND ELEVATIONS CONFORM TO SPECIFIED REQUIREMENTS.
  - VERIFY ALL SITE SERVICES ARE LOCATED OUTSIDE OF SRW CONSTRUCTION AREA UNLESS OTHERWISE NOTED.

3. VERIFY THE SRW STRUCTURE OR EXCAVATION LIMITS ARE WITHIN PROPERTY BOUNDARIES AND DO NOT CROSS INTO ADJACENT PROPERTIES UNLESS APPROVED PRIOR TO CONSTRUCTION.

4. VERIFY THE SRW AND ASSOCIATED EXCAVATION REMAINS OUTSIDE OF THE LOADING INFLUENCE OF OTHER ADJACENT STRUCTURES AND ENSURE STABILITY OF EXCAVATIONS AND CONFORMANCE WITH APPLICABLE REGULATIONS.

2. GEOTECHNICAL INSPECTION

- VERIFY SOIL PARAMETERS AND GROUNDWATER CONDITIONS ARE ACCEPTABLE FOR SRW.
- VERIFY SUBGRADE BEARING CAPACITY MEETS OR EXCEEDS VALUES REQUIRED FOR AREA TO RECEIVE SRW.
- IDENTIFY GROUNDWATER CONDITIONS AND/OR OTHER WATER SOURCE PRIOR TO SRW INSTALLATION.
- ENSURE THAT SURFACE WATER RUNOFF AND/OR OTHER SOURCES OF WATER ARE BEING CONTROLLED DURING CONSTRUCTION AND DIRECTED AWAY FROM THE SRW TO A FUNCTIONING DRAIN.
- PROCEED WITH INSTALLATION ONLY AFTER UNSATISFACTORY CONDITIONS HAVE BEEN CORRECTED TO THE SATISFACTION OF THE CONTRACT ADMINISTRATOR.
- EXCAVATION
  - THE FOUNDATION SOIL SHALL BE EXCAVATED AS REQUIRED TO THE GRADES AND DIMENSIONS SHOWN ON THE CONSTRUCTION DRAWINGS.

5. LEVELING BASE PLACEMENT

- THE MINIMUM THICKNESS OF THE LEVELING BASE SHALL BE 300MM
- THE LEVELING BASE SHALL EXTEND A MINIMUM OF 150MM FROM THE FRONT, AND 300MM FROM THE BACK, OF THE PROPOSED WALL.
- THE MATERIAL SHALL BE COMPACTED TO >99% STANDARD PROCTOR DENSITY.
- CONCRETE STARTER UNITS
  - CONCRETE STARTER UNITS PER AS PER WALL SUPPLIER REQUIREMENTS.
- PLACING GEOTEXTILE
  - PLACE GEOTEXTILE SO THAT THE LENGTHS ARE SUFFICIENTLY LONG TO BE SET AGAINST THE BACK OF THE FIRST RETAINING WALL UNIT, RUN OVER THE PREPARED FOUNDATION, EXTEND TOWARDS THE BACK OF THE EXCAVATION, AND UP THE EXCAVATION FACE AS SHOWN IN THE CONTRACT DRAWINGS.
  - GEOTEXTILE OVERLAPS SHALL BE A MINIMUM OF 300MM.
  - START INSTALLATION BY LAYING THE GEOTEXTILE ALONG THE BOTTOM OF THE EXCAVATION, ALLOWING EXTRA MATERIAL TO BE SET AGAINST THE BACK OF THE FIRST RETAINING WALL UNIT WHEN INSTALLED. RUN LENGTHS UP THE BACK OF THE EXPOSED CUT FACE AND STAKE AGAINST THE SLOPE DURING CONSTRUCTION.

8. INSTALLATION OF SEGMENTAL RETAINING WALL UNITS.

- INSTALL UNITS IN ACCORDANCE WITH THE MANUFACTURER'S INSTRUCTIONS AND RECOMMENDATIONS FOR THE SPECIFIC CONCRETE WALL UNIT, AND AS SPECIFIED HEREIN.
- THE BOTTOM ROW OF WALL MODULES SHALL BE PLACED ON THE PREPARED STARTER FOOTING AS SHOWN ON THE CONTRACT DRAWINGS. CARE SHALL BE TAKEN TO ENSURE THAT THE WALL MODULES ARE ALIGNED PROPERLY, LEVELED FROM SIDE TO SIDE AND FRONT TO BACK AND ARE IN COMPLETE CONTACT WITH THE BASE.
- THE WALL MODULES ABOVE THE BOTTOM COURSE SHALL BE PLACED SUCH THAT THE TONGUE AND GROVE ARRANGEMENT PROVIDE A VERTICAL WALL FACE.
- VENEER AND STRUCTURAL WALL UNITS TO BE PRE-ASSEMBLED PRIOR TO PLACING.
- SUCCESSIVE COURSES SHALL BE PLACED TO CREATE A RUNNING BOND PATTERN.
- THE WALL MODULES SHALL BE SWEEP CLEAN BEFORE PLACING ADDITIONAL LEVELS TO ENSURE THAT NO DIRT, CONCRETE OR OTHER FOREIGN MATERIALS BECOME LODGED BETWEEN SUCCESSIVE LIFTS OF THE WALL MODULES.
- THE CONTRACTOR SHALL CHECK THE LEVEL OF WALL MODULES WITH EACH LIFT TO ENSURE THAT NO GAPS ARE FORMED BETWEEN SUCCESSIVE LIFTS.
- CARE SHALL BE TAKEN TO ENSURE THAT THE WALL ARE NOT BROKEN OR DAMAGED DURING HANDLING AND PLACEMENT.
- FINAL COURSE OF THE STRUCTURAL UNITS SHALL BE SECURED TO THE UNITS BELOW USING CONCRETE ADHESIVE PRIOR TO PLACING COPING.
- INSTALLATION OF WALL COPING
  - THE COPING UNITS SHALL BE SECURED TO THE TOP OF THE WALL WITH TWO 10MM BEADS OF THE APPROVED FLEXIBLE CONCRETE ADHESIVE POSITIONED 50MM IN FRONT AND BEHIND THE TONGUE OF THE LAST COURSE OF RETAINING WALL UNITS.
  - FINISH GRADING BEHIND THE WALL TO DIRECT SURFACE RUN OFF WATER AWAY FROM THE SEGMENTAL RETAINING WALL.

6.0 CONSTRUCTION TOLERANCES

- INSTALLATION OF SRW FACIA SHALL BE WITHIN ALL THE FOLLOWING ACCEPTABLE TOLERANCES:
  - VERTICAL CONTROL: +/- 32MM OVER A 3.0M DISTANCE
  - HORIZONTAL CONTROL: STRAIGHT LINES: +/- 32MM OVER 3.0M DISTANCE
  - ROTATION OF THE SRW FACE: MAXIMUM 2.0 DEGREES FROM VERTICAL.

7.0 MEASUREMENT FOR PAYMENT AND BASIS OF PAYMENT

- PAYMENT AT THE CONTRACT LUMP SUM PRICE FOR THE TENDER ITEM "SEGMENTAL LANDSCAPE PLANTER WALL" SHALL BE FULL COMPENSATION FOR ALL LABOUR, EQUIPMENT AND MATERIAL REQUIRED FOR SUPPLY AND INSTALLATION OF THE WALL SYSTEM.

B. BICYCLE RACK

1.0 ACCEPTABLE MATERIALS:

- MODEL #BU-4RING AS MODIFIED TO CITY OF OTTAWA SPECIFICATIONS. SURFACE MOUNT AS SUPPLIED BY JOHNSONS ENVIRONMENTAL PRODUCTS INC. TEL: 1-800-653-1222. METAL FRAMEWORK TO BE POWDER COATED WITH "INFINGUARD" PROFESSIONAL ANTIRUST CORROSION SYSTEM.
- BIKE-UP STANDARD 4-RING 'RING BACK', AS SUPPLIED BY BIKE-UP BICYCLE PARKING SYSTEMS INC., TEL: 800-661-3506. METAL TO BE POWDER-COATED OR GALVANIZED, FASTENED WITH STAINLESS STEEL ANTI-VANDAL HARDWARE.



NO.	DATE	DESCRIPTION
03	APR 19/22	RESUBMISSION #1 FOR SPA
02	OCT 13/21	SPA SUBMISSION
01	SEP 21/21	CONCEPT SITE PLAN APPROVED BY CLIENT



**COLIZZA BRUNI**  
architecture

78 CHAMBERLAIN AVE. • OTTAWA • ONTARIO • K1S 1V9  
T 613.236.2944 • F 613.236.6777 • www.colizzabruni.com

PROJECT NAME

**ELLWOOD HOUSE  
EXTENSION**

2262 BRAESIDE AVENUE, OTTAWA, ON

DRAWING TITLE  
**LANDSCAPE  
DETAILS**

SCALE  
AS NOTED  
DRAWN BY  
DATE  
4/25/22  
PROJECT NO.  
#001-16

DRAWING NO.  
**L2**

**APPROVED**  
By Lily Xu at 1:21 pm, Jun 23, 2023

**LILY XU, MCIP, RPP**  
MANAGER, DEVELOPMENT REVIEW SOUTH  
PLANNING, INFRASTRUCTURE & ECONOMIC  
DEVELOPMENT DEPARTMENT, CITY OF OTTAWA