

LEGEND

- AREAS CHANGING FROM SOFT TO HARD SURFACES
- TOTAL SOFT TO HARD AREAS = 1671 sq.m**
- AREAS CHANGING FROM HARD TO SOFT SURFACES
- TOTAL HARD TO SOFT AREAS = 637 sq.m**
- NET INCREASE IN HARD AREAS = 1,034 sq.m**

KEY PLAN



No.	DATE	REVISION
2	OCT 25-21	ISSUED FOR APPROVAL
1	OCT 15-21	PRELIMINARY

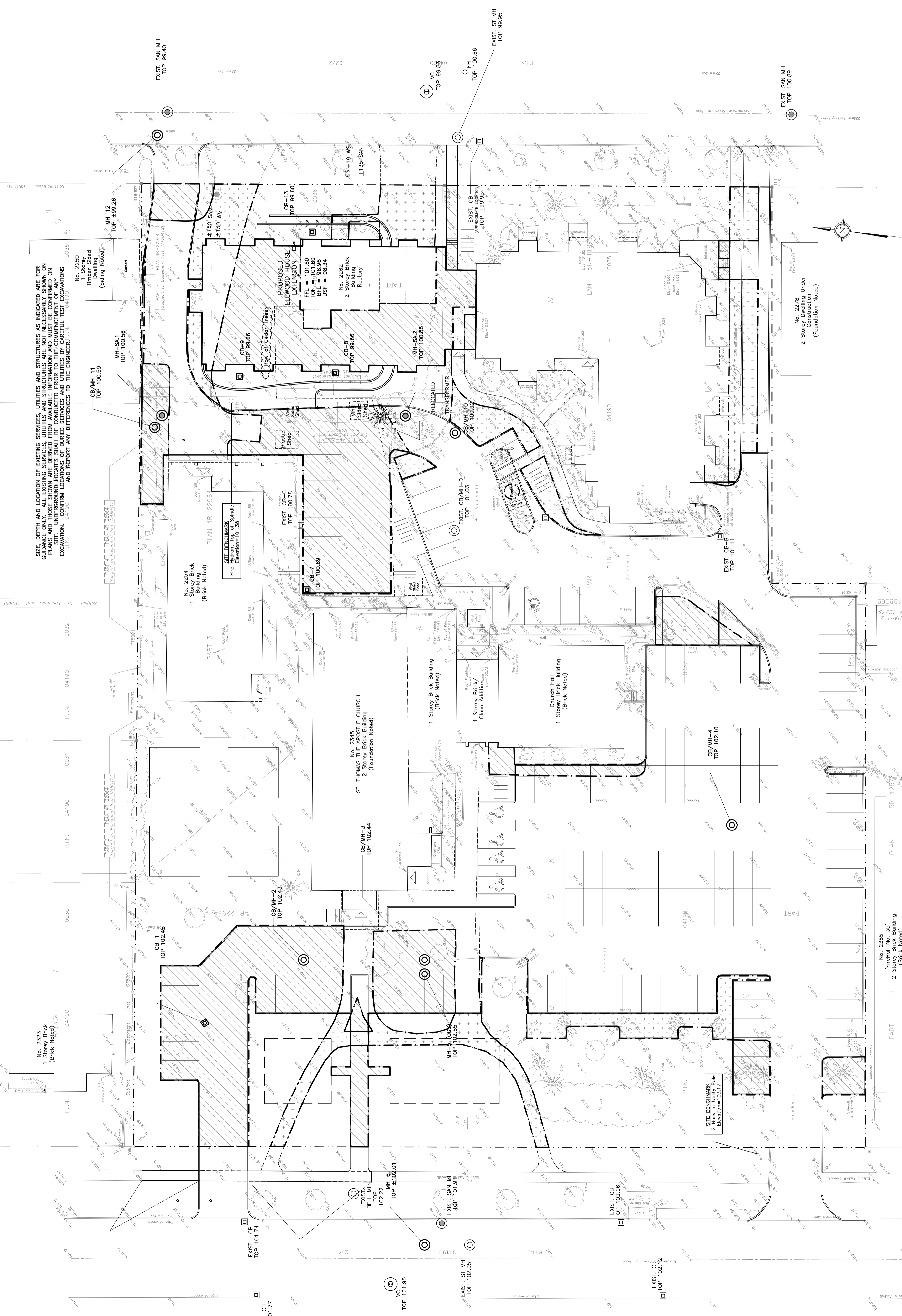
D. B. GRAY ENGINEERING INC.
 700 Long Point Circle
 Ottawa, Ontario K1G 0T6
 613-425-8044
 d.gray@dbgrayengineering.com

ELLWOOD HOUSE EXTENSION & SITE IMPROVEMENTS
 2262 BRAESIDE AVENUE
 & 2345 ALTA VISTA DRIVE
 OTTAWA, ONTARIO

AREAS CHANGING FROM SOFT TO HARD SURFACES AND HARD TO SOFT SURFACES

Engineer's Seal
 D.B.G.
 Drawn Scale 1:250
 V. Scale
 Date OCT 15-21
 Job No. 21023
 Drawing No. **C-6**
of 7

SIZE, DEPTH AND LOCATION OF EXISTING SERVICES, UTILITIES AND STRUCTURES AS INDICATED ARE FOR GENERAL INFORMATION ONLY. PLANS AND THOSE SHOWN ARE DERIVED FROM AVAILABLE INFORMATION AND MUST BE CONFIRMED ON SITE. UNDERGROUND LOCATES SHALL BE CONDUCTED PRIOR TO THE COMMENCEMENT OF ANY EXCAVATION. CONFIRM LOCATIONS OF EXISTING UTILITIES AND STRUCTURES TO THE ENGINEER, AND REPORT ANY DIFFERENCES TO THE ENGINEER.



REFER TO NOTES & DETAILS ON DRAWINGS C-4 & C-5

04190 PLAN 1 PART 1
 04190 PLAN 5R-3768 PART 1

No. 2355
 "Firehall No. 35"
 2 Storey Brick Building
 (Brick Noted)

No. 1423
 "Training Facility"
 2 Storey Brick Building
 (Brick Noted)

No. 2345
 "ST. THOMAS THE APOSTLE CHURCH"
 2 Storey Building
 (Foundation Noted)

No. 2262
 "Church Hall"
 1 Storey Brick Building
 (Brick Noted)

No. 2254
 "1 Storey Brick Building"
 (Brick Noted)