

Drawing Remains the Property of Copyright Reserved by Gino J. Aiello Landscape Architect. Do Not Use or Reproduce Without Approval of Gino J. Aiello.

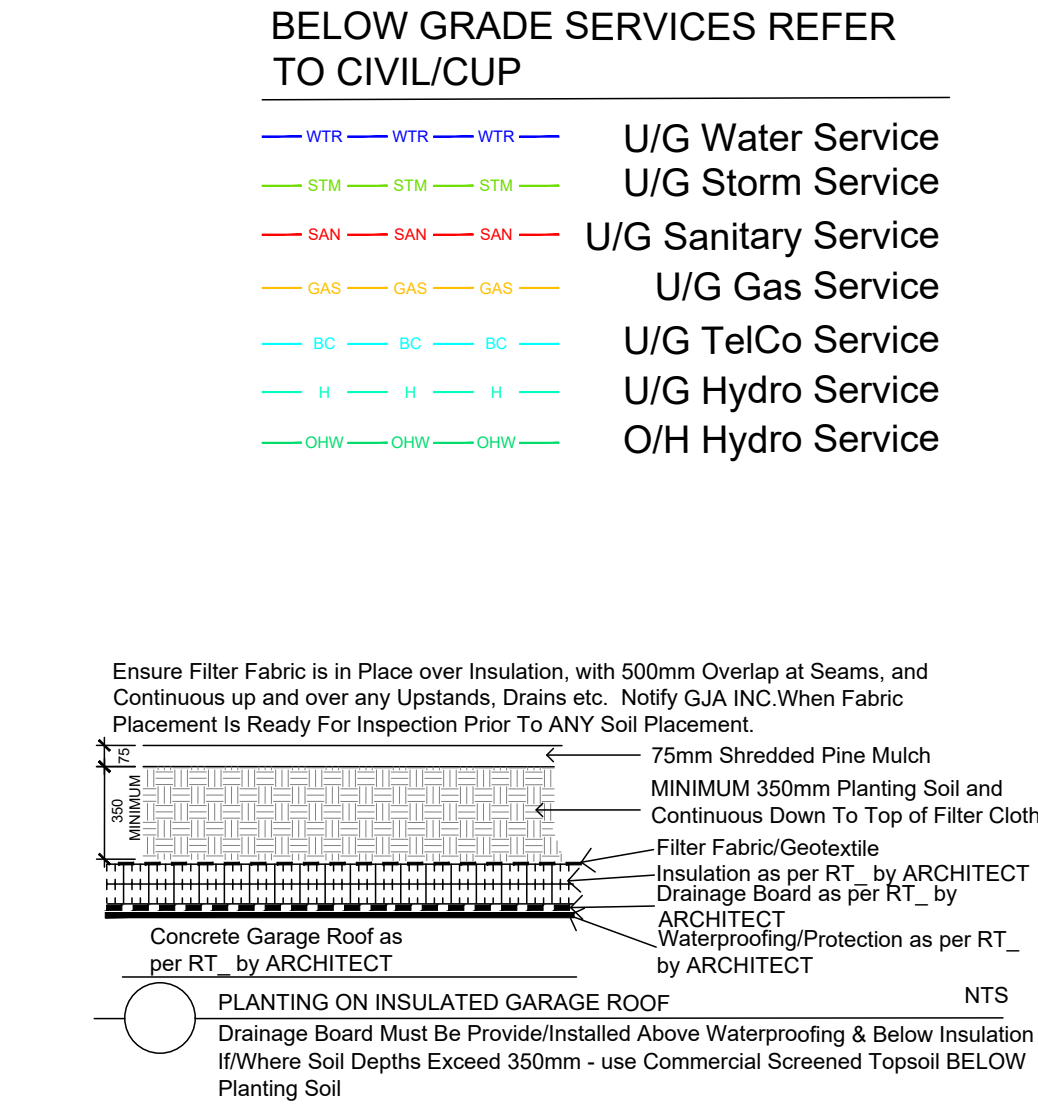
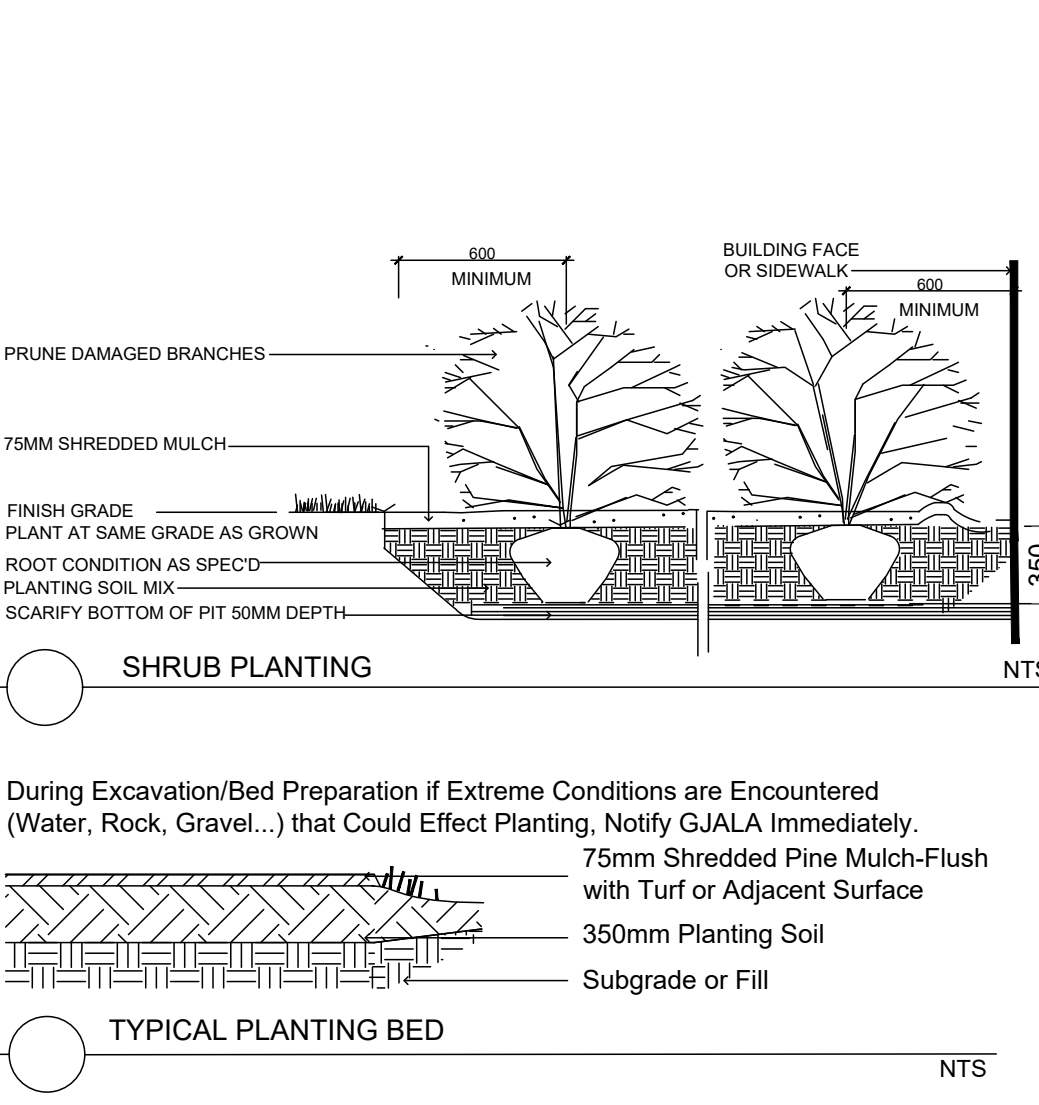
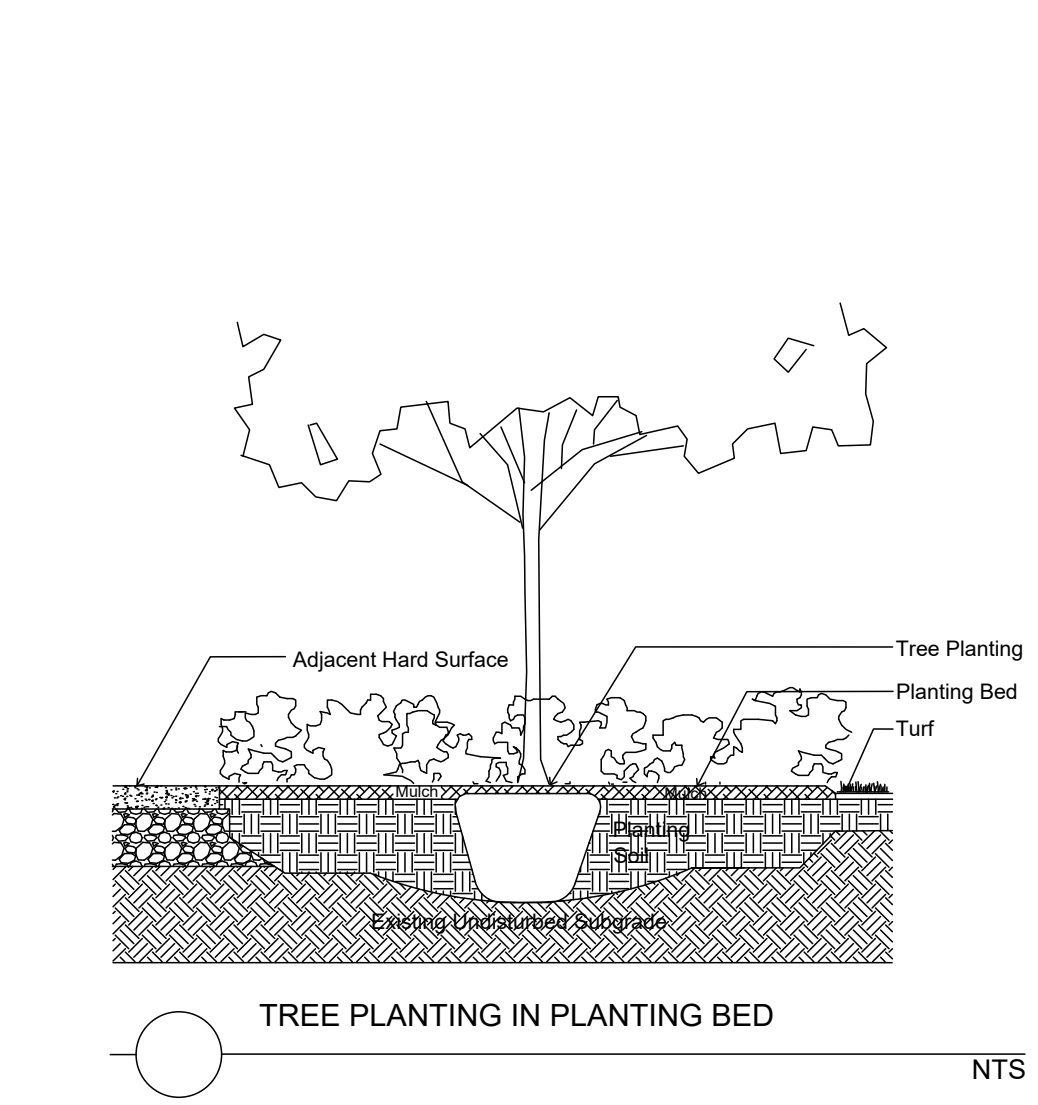
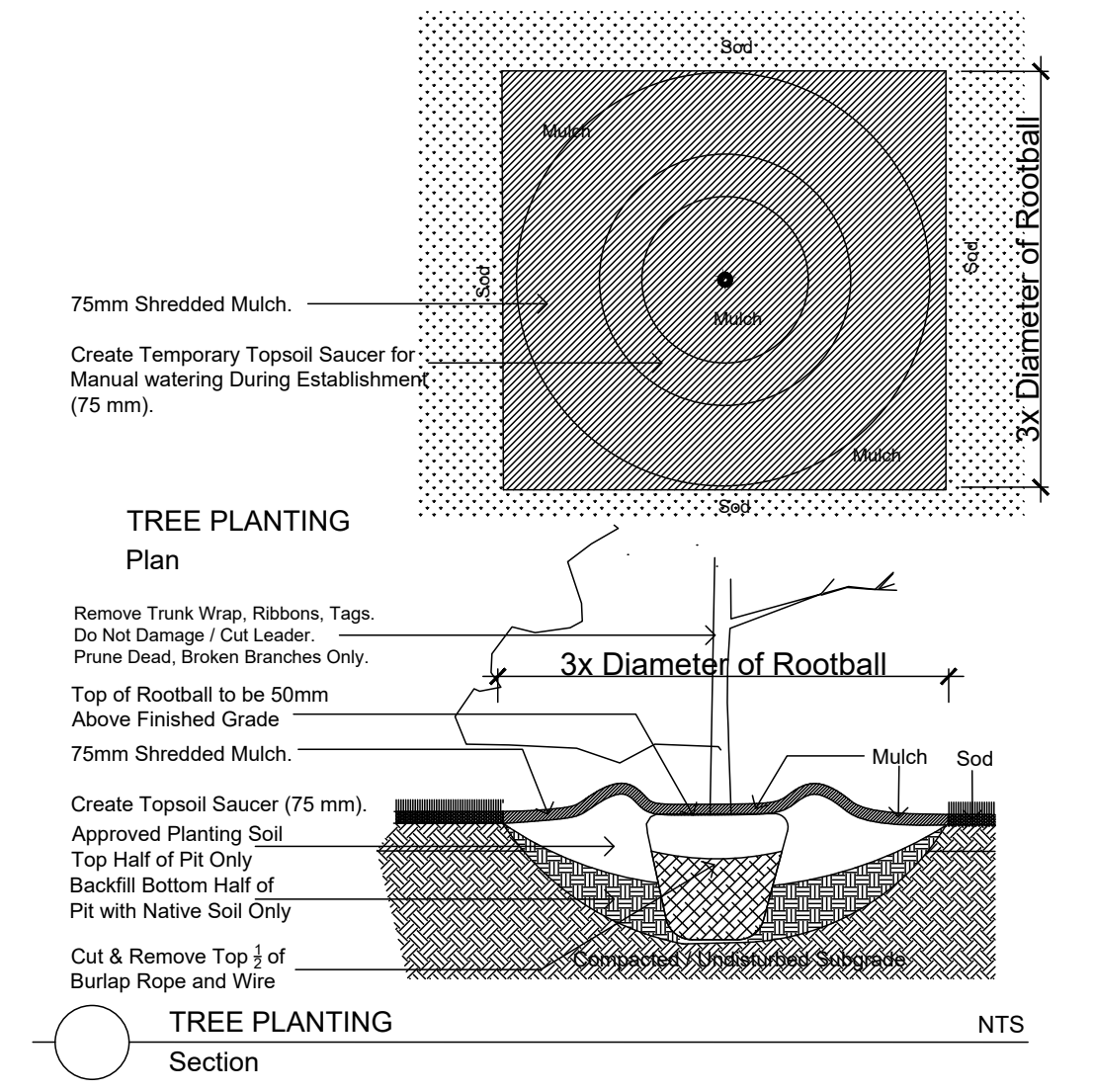
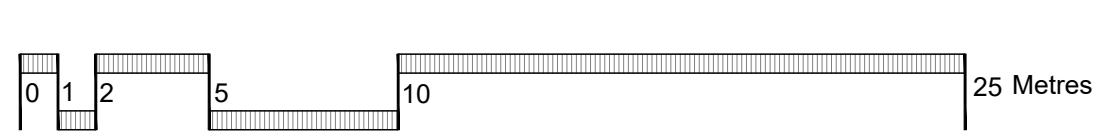
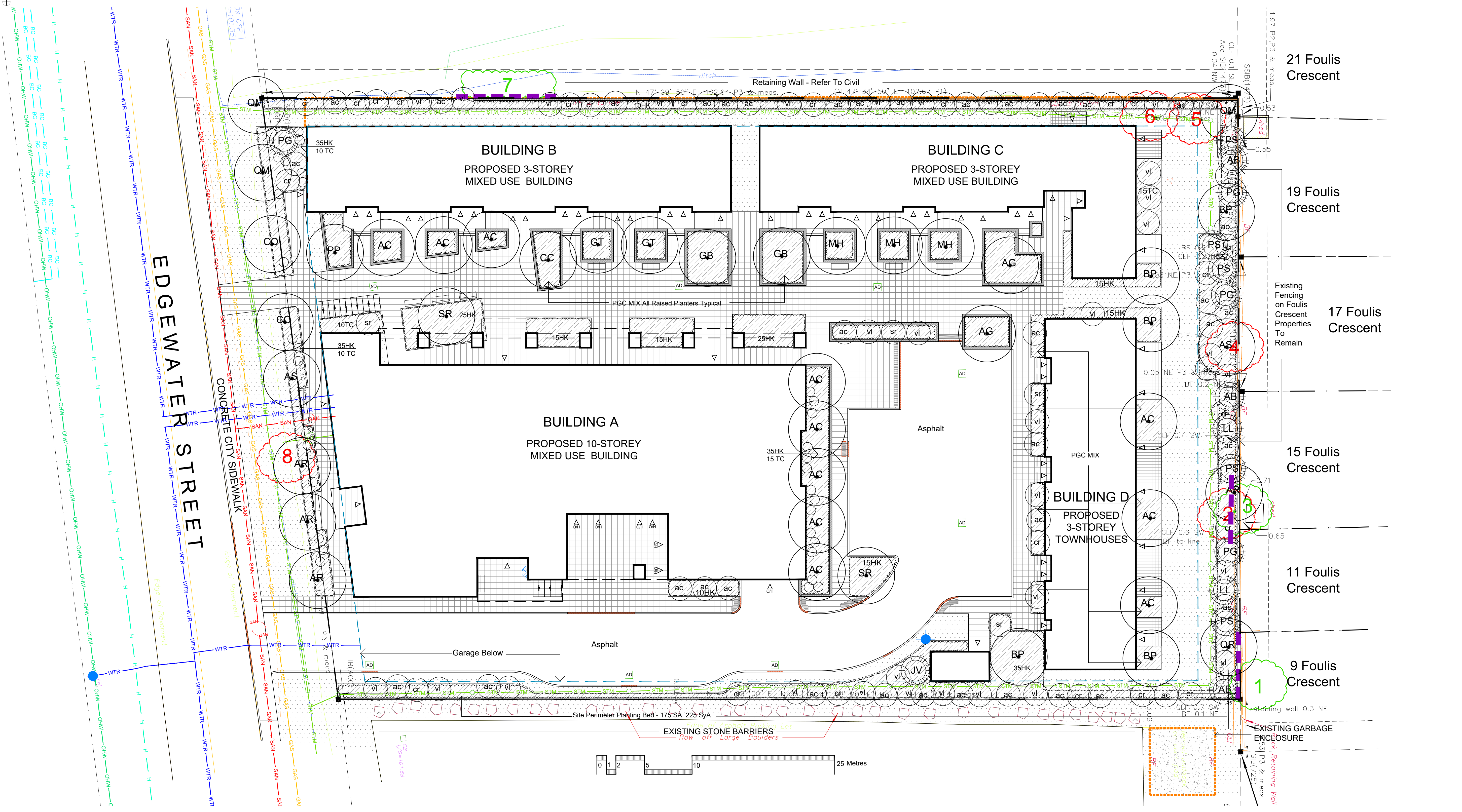
NOT To Be Used For Construction Unless indicated by Revision: **FOR LANDSCAPE CONSTRUCTION**.

Contractor is Responsible for Verification of Site Locations of all Utilities. Report any Discrepancies Between Site and Drawing Immediately to Gino J. Aiello. DO NOT Proceed Until Clarified.

TURF AREAS TO BE SOD CW 150MM DEPTH TOPSOIL ON APPROVED SUBGRADE | SOD TO BE #1 GRADE TURFGRASS NURSERY SOD per NSGA - Fine Fescue/Kentucky Bluegrass Sod | PLANTING MIX TO BE APPROVED BY LANDSCAPE ARCHITECT | PLANT MATERIAL TO MEET CNLA STANDARDS/BE APPROVED BY LANDSCAPE ARCHITECT PRIOR TO PLANTING | ALL MATERIALS & WORK TO BE MAINTAINED UNTIL FINAL ACCEPTANCE. (MOWING TURF, WEEDING BEDS, WATERING TURF & PLANTS) & INCLUDE 1 YEAR WARRANTY FROM DATE OF FINAL ACCEPTANCE | PROVIDE WATERING OF ALL PLANT MATERIAL AS REQUIRED FOR PROPER ESTABLISHMENT, UNTIL END OF WARRANTY PERIOD | REFER TO CIVIL ENGINEER'S DRAWING FOR ELEVATIONS / GRADING |

The Landscape Plan is to be read in conjunction with the grading, servicing, site and survey plan | Bare root material to be planted in season only | All plant material locations to be staked on site by the landscape contractor and checked by the landscape architect prior to planting | All trees to be preserved on or directly adjacent to the site will be protected | Plant material are to be installed a minimum of 3.0m away from any part of any hydro transformer, 3.0m corridor between a fire hydrant and the curb, a 2.5m radius beside or behind a fire hydrant, 2.0m from any servicing/utility line or structure |

- Property Lines
- Depressed Curb
- Proposed Exterior Door (O/H indicates Overhead Door)
- Retaining Wall
- Fence
- Bike Rack Anchor to Concrete
- Bench
- TWSI
- Fire Hydrant
- FD Siamese Connection
- Area Drain
- Catch Basin
- Concrete Monolithic Curb
- Concrete
- Patio Slabs
- Pavers
- Raised Planting Bed/Planter
- Existing Tree to Remain
- Existing Tree to Remove
- Protection for Existing Trees
- Coniferous Tree
- Proposed Deciduous Tree
- Shrub Planting Bed
- Planting Bed
- Turf



- BELOW GRADE SERVICES REFER TO CIVIL/CUP**
- WTR - WTR - WTR U/G Water Service
 - STM - STM - STM U/G Storm Service
 - SAN - SAN - SAN U/G Sanitary Service
 - GAS - GAS - GAS U/G Gas Service
 - BC - BC - BC U/G Tel/Co Service
 - H - H - H U/G Hydro Service
 - OHW - OHW - OHW O/H Hydro Service

CALENDER B AND B TREES - 16 EDGEWATER, KANATA

Code	Qty	Botanical Name	Common Name	Size	Condition
AC	11	Amaranthus canadensis	Tree Serviceberry	50mm cal	B + B specimen
AD	2	Aesculus glabra	Ohio Buckeye	60mm cal	B + B specimen
AR	4	Acer rubrum	Red Maple	70mm cal	B + B specimen
AS	2	Acer saccharum	Sugar Maple	70mm cal	B + B specimen
BF	5	Betula papyrifera	Paper Birch	60mm cal	B + B specimen
CC	1	Carpinus caroliniana	Hornbeam Bluebeech	50mm cal	B + B specimen
CD	2	Celtis occidentalis	Common Nutsberry	70mm cal	B + B specimen
GB	2	Gonopeltis	Madroper Tree	50mm cal	B + B specimen
GD	1	Gymnocladia dioica	Kentucky Coffee Tree	60mm cal	B + B specimen
GI	2	Gonolobus macrodon 'Sagepot'	Sagepot	50mm cal	B + B specimen
MH	3	Malus 'Harvest Gold'	Harvest Gold Crabapple	50mm cal	B + B specimen
PP	1	Prunus pennsylvanica	Pie Cherry	60mm cal	B + B specimen
QM	3	Quercus macrocarpa	Bar Oak	70mm cal	B + B specimen
QR	1	Quercus rubra	Red Oak	60mm cal	B + B specimen
SR	2	Syringa reticulata	Ligustrum Tree Lilac	50mm cal	B + B specimen
AB	3	Abies balsamea	Balsam Fir	1.75m Ht.	B + B specimen
AV	3	Juniperus virginiana	Eastern Red Cedar	1.5m Ht.	B + B specimen
LL	3	Larix laricina	Eastern Larch / Tamarack	1.5m Ht.	B + B specimen
PG	3	Picea glauca	White Spruce	2.0m Ht.	B + B specimen
PI	3	Pinus strobus	White Pine	1.5m Ht.	B + B specimen

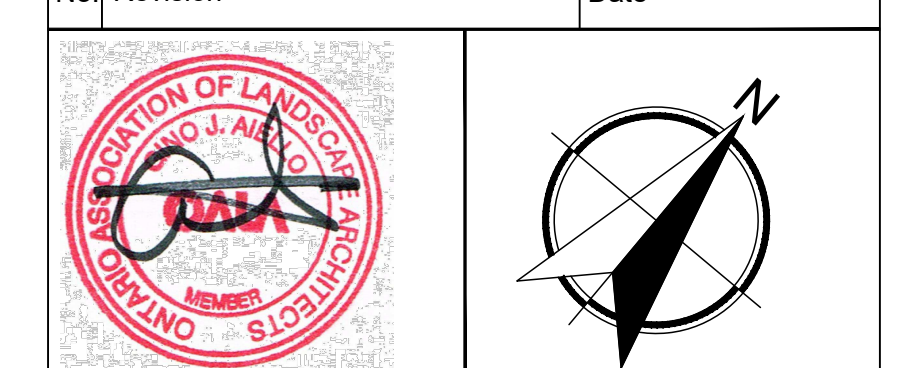
SHRUBS - 16 EDGEWATER, KANATA

Code	Qty	Botanical Name	Common Name	Size	Condition
ac	35	Amaranthus canadensis	Serviceberry	80cm Ht.	Pot
cr	35	Carrus racemosa	Grey Dogwood	80cm Ht.	Pot
hw	300	Hypericum perforatum	St. John's Wort	30cm Pot	Pot
syk	225	Symphoricarpos albus	Snowberry	60cm Ht.	Pot
sa	175	Spiraea alba	Madroper Tree	60cm Ht.	Pot
vt	35	Viburnum lentago	Nannyberry	80cm Ht.	Pot
tc	60	Taxus cuspidata 'Nana'	Dwarf Japanese Yew	40cm spr	Pot

PGC MIX - Layout on Site Buy GJA Inc.

Qty.	Botanical Name	Common Name	Condition
25	Androsace virginica	Partridge	30cm Pot
55	Auga reptans	Algae	30cm Pot
55	Arctostaphylos uva-ursi	Bearberry	30cm Pot
75	Calamagrostis	Feather Reed Grass	30cm Pot
55	Calamagrostis acutiflora 'Overdam'	Feather Reed Grass	30cm Pot
55	Echinacea	Purple Coneflower	30cm Pot
125	Geranium macrorrhizum	Bigleaf Geranium	30cm Pot
125	Geranium psillostemon 'Serafin'	Razanne Geranium	30cm Pot
75	Hemerocallis	Daylily	30cm Pot
125	Panicum virgatum	Switch Grass	30cm Pot
35	Hydrangea arborescens 'Annabelle'	Annabelle Hydrangea	40cm Ht.
55	Potentilla fruticosa 'Albococcinea'	Abnormal Potentilla	30cm Ht.
25	Potentilla fruticosa 'Cocoonation Triumph'	Cocoonation Triumph Potentilla	30cm Ht.
25	Potentilla fruticosa 'Farreri'	Goldtop Potentilla	30cm Ht.
35	Prunella sp. 'amabilis'	Magpie Pine	30cm pot
55	Spiraea bumalda 'Dart's Red'	Dart's Red Spiraea	30cm Ht.
35	Spiraea bumalda 'Magic Carpet'	Magic Carpet Spiraea	30cm Ht.
15	Spiraea bumalda 'Anthony Waterer'	Anthony Waterer Spiraea	40cm Ht.

No.	Revision	Date
3	THIRD SUBMISSION SPC	DECEMBER 12 2022
2	SECOND SUBMISSION SPC	AUGUST 04 2022
1	FIRST SUBMISSION SPC	OCTOBER 26 2021
0	COORDINATION / REVIEW	OCTOBER 2021



PARK RIVER PROPERTIES
206-900 BOULEVARD DE LA CARRIERE,
GATINEAU, QC, J8Y 6T5

Property Owner
Gino J. Aiello | landscape architect GJALA.com
GJA Inc. Gino@GJALA.com (613) 286 5130
110 Deberry Road Unit # 9 | Ottawa Ontario | K2T 0C2

MIXED USE DEVELOPMENT

Project 16 EDGEWATER STREET KANATA

Drawing **Landscape Plan**

Scale: 1:200

City of Ottawa
Dwg - 18623

L1

D07-12-21-0176