



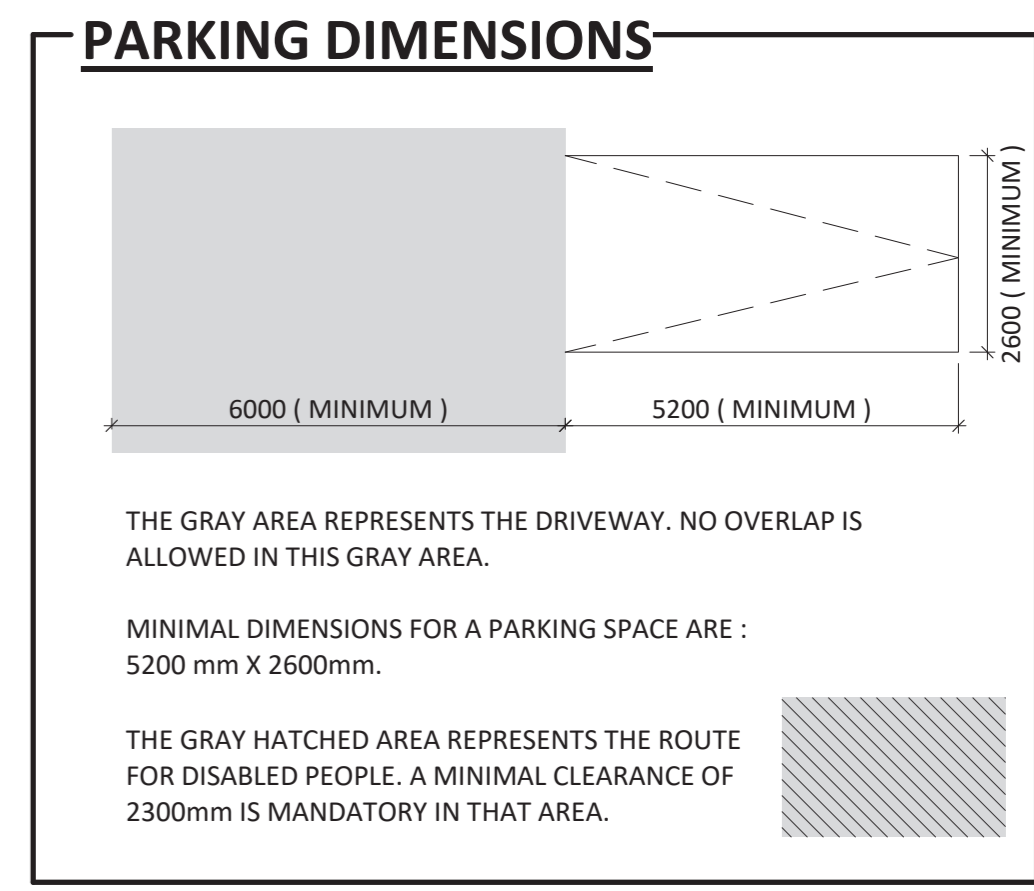
LEGEND

	BULKHEAD		ELEVATION REFERENCE
	OUTPUT AND AIR INTAKE		SECTION REFERENCE
	WINDOW TYPE		TYPICAL COMPOSITION, SEE SHEET A752
	DOOR TYPE		LEVEL
	CURTAIN WALL		STRUCTURAL GRID
	CEILING TYPE		ROOM NAME AND NUMBER
	ADDENDA		PLAN ANNOTATIONS
	NOTICE OF MODIFICATION		ELEVATION ANNOTATIONS
	DIRECTIVE		FINISH ANNOTATIONS
	ARCHITECTURAL ELEVATION		TYPICAL WALL
	GEODESIC ELEVATION		TRANSPOUNDER
	BACKING		FIREFIGHTER PHONE
	SURVEILLANCE CAMERA		PULL STATION
	ELECTRICAL PANEL		INTERCOM
	FIXED PART OF THE PATIO DOOR		PUSH BUTTON FOR UNIVERSAL ACCESS
	OPENING PART OF THE PATIO DOOR		FIRE ALARM PANEL
	THE ACTIVE DOOR IS INDICATED BY THE LOCATION OF THE DOOR NUMBER		CARD READER
	Name of the drawing		DRAINAGE (SEE MECHANICAL ENGINEER)
	Scale of the drawing		VENT (SEE MECHANICAL ENGINEER)
			STORM (SEE MECHANICAL ENGINEER)

- ### GENERAL NOTES
- FOR THE DOORS LOCATED IN A BARRIER-FREE PATH OF TRAVEL, PROVIDE TO RESPECT THE PRESCRIBED SIDE CLEARANCES. LEFT SIDE CLEARANCES OF AT LEAST 600mm IF THE PIVOT DOOR TOWARDS THE APPROACH AND 300mm IF THE PIVOT DOOR TOWARDS THE APPROACH, AS SHOWN IN THE FOLLOWING SKETCH.

COMMUN SPACE & BARRIER-FREE DWELLING UNITS

ENTRANCE DOORS OF NON BARRIER-FREE DWELLING UNITS ONLY REQUIRED THE 300mm RIGHT SIDE CLEARANCE
 - REPLACE THE 15mm TYPE "X" GYPSUM BY A 15mm TYPE "X" SHOCK RESISTANCE GYPSUM, PLASTERED AND PAINTED/JOINTS ON THE PARKING SIDE ONLY.
 - FOR ALL THE DEMISING WALL, ALL THE GYPSUM JOINTS WILL BE ACOUSTICALLY SEALED AT ALL ROWS AS WELL AS AT THE PERIMETER OF THE WALL.
 - ALL PARTITIONS ARE FROM CONCRETE SLAB TO NEXT LEVEL CONCRETE SLAB EXCEPT AS OTHERWISE.
 - A WATER RESISTANT GYPSUM MUST BE INSTALLED ON WALLS, PARTITIONS, BULKHEAD AND GYPSUM CEILINGS IN ALL BATHROOM AND WC.
 - *FOR FIRE-RATED PARTITIONS: ADD THE WATER RESISTANT GYPSUM OVER THE PARTITION.
 - *FOR PARTITIONS WITHOUT FIRE RESISTANCE: REPLACE THE GYPSUM WITH A WATER RESISTANT GYPSUM OF THE SAME THICKNESS AS PREVIOUSLY PROVIDED.
 - THE SPRINKLERS, WATER SUPPLY AND ELECTRICAL WIRING MUST PASS INTO THE INTERIOR PARTITIONS OF THE FLA UNITS.
 - THE SPECIALIZED CONTRACTOR (INTERIOR SYSTEM) MUST PROVIDE THE STRUCTURAL CALCULATIONS OF THE EXTERIOR STUDS BY A SPECIALIZED ENGINEER. IT MUST ALSO PROVIDE ALL THE REINFORCEMENT NECESSARY TO COMPLETE THE EXTERIOR WALL WORK WHILE RESPECTING THE ARCHITECTURAL PLANS.
 - PROVIDE BACKING IN GALVANIZED STEEL SHEET FOR ALL CABINETS AND OTHER FURNITURE (SEE DESIGN)
 - PROVIDE BACKING IN PLYWOOD 19mm FOR ALL GRAB BARS, WALL TELEVISIONS, TOILET PARTITIONS, HANDRAILS (SEE DESIGNER AND TECHNICAL SHEET FOR BATHROOM ACCESSORIES)



PROJECT
ST. LAURENT DEVELOPMENT
1740-1760 St. Laurent boulevard, Ottawa ON K1G 1A2

OWNER
Heafey GROUP INC.

100-788, BOUL SAINT-JOSEPH, GATINEAU, QC J8Y 4B8

ARCHITECTURAL
PMA ARCHITECTES

1881 181-8584 INFO@PMAARCHITECTES.COM
3075, CHEMIN DES QUATRE-BOURGEONS GATINEAU, QC J8Y 3K4 PMAARCHITECTES.COM

LAPALME RHEAULT ARCHITECTES + ASSOCIES
53, SAINT-RAYMOND BOULEVARD, GATINEAU, QC J8Y 1R8

PLANNER
FOTENN Planning + Design
386 Cooper Street, Suite 300, Ottawa ON K2P 2H7 613.726.3706 www.fotenn.com

CIVIL
exp.

2650, QUEENSVIEW DRIVE, SUITE 100, OTTAWA, ON K2B 8H6

LANDSCAPE
JAMES B. LENNOX & ASSOCIATES INC. LANDSCAPE ARCHITECTS
1000, LAURENCE AVENUE EAST, SUITE 100, OTTAWA, ON K1A 0K6 613.746.7878

SURVEYOR
ANNIS, O'SULLIVAN, VOLLEBEKK LTD.
14 CONCOURSE GATE, SUITE 500, NEPEAN, ON K2E 7S6

KEY PLAN

ARCHITECT SEAL

ONTARIO ASSOCIATION OF ARCHITECTS
PIERRE MARTIN LICENCE 8787

ONTARIO ASSOCIATION OF ARCHITECTS
CHRISTIAN RHEAULT LICENCE 7553 2021-10-20

REVISIONS		
NO	DATE	DESCRIPTION

NOTE
IT IS THE RESPONSIBILITY OF THE APPROPRIATE CONTRACTOR TO CHECK AND VERIFY ALL DIMENSIONS ON THE SITE AND TO REPORT ALL ERRORS AND/OR OMISSIONS TO THE ARCHITECT. ALL CONTRACTORS MUST COMPLY WITH ALL PERTINENT CODES AND BY-LAWS. DO NOT SCALE DRAWINGS.

THIS DOCUMENT AND ITS CONTENT IS COPYRIGHTED. ANY REPRODUCTION IS PROHIBITED UNLESS GRANTED BY THE ARCHITECT.

**SITE PLAN APPLICATION
DO NOT USE FOR
CONSTRUCTION
2021-10-19**

DATE 2021-10-19	DESIGNED Concepteur
	DRAWN Auteur
PROJECT No 20055	CHECKED Vérificateur
SHEET TITLE	
FLOOR PLAN - LEVEL 01 - P0	

SHEET No
P201

BIM 360/DEV/ST-LAURENT/OTTAWA/2005_A-SITE-R21.rvt



100-788, BOUL SAINT-JOSEPH, GATINEAU, QC J8Y 4B8



3075, CHEMIN DES QUATRE-BOURGEOIS, GATINEAU, QC J8Y 3W4



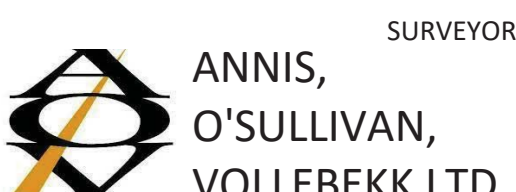
53, SAINT-RAYMOND BOULEVARD, GATINEAU, QC J8Y 1R8



386 Cooper Street, Suite 300, Ottawa ON K2P 2H7



2650, QUEENSVIEW DRIVE, SUITE 100, OTTAWA, ON K2B 8H6



14 CONCOURSE GATE, SUITE 500, NEPEAN, ON K2E 7S6



NO	DATE	DESCRIPTION

IT IS THE RESPONSIBILITY OF THE APPROPRIATE CONTRACTOR TO CHECK AND VERIFY ALL DIMENSIONS ON THE SITE AND TO REPORT ALL ERRORS AND/OR OMISSIONS TO THE ARCHITECT. ALL CONTRACTORS MUST COMPLY WITH ALL PERTINENT CODES AND BY-LAWS. DO NOT SCALE DRAWINGS.

SITE PLAN APPLICATION DO NOT USE FOR CONSTRUCTION 2021-10-19

DATE	DESIGNED
2021-10-19	Concepteur
DATE	DRAWN
PROJECT No	CHECKED
20005	Vérificateur
SHEET TITLE	
FLOOR PLAN - LEVEL P1 & P2	

LEGEND

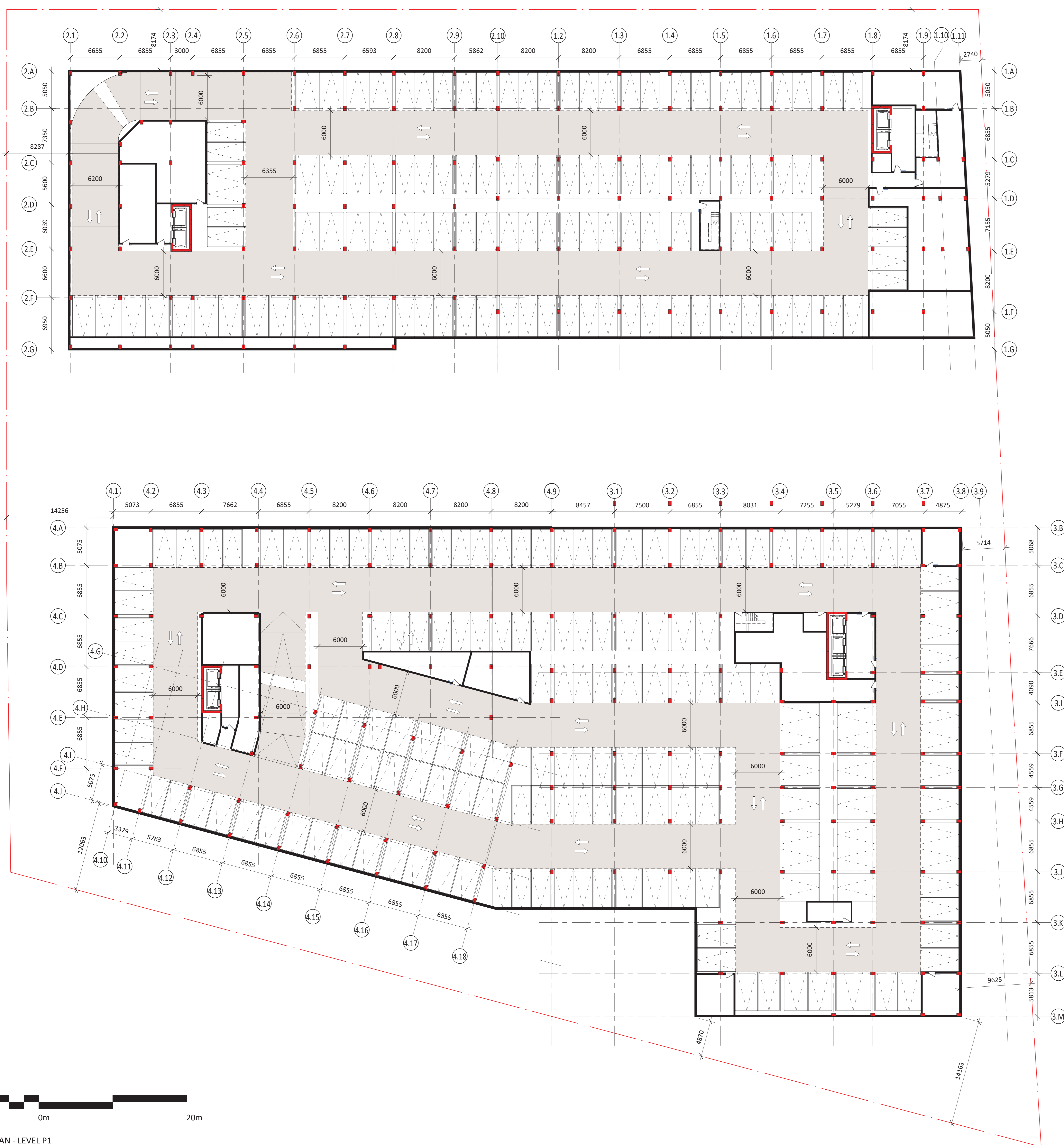
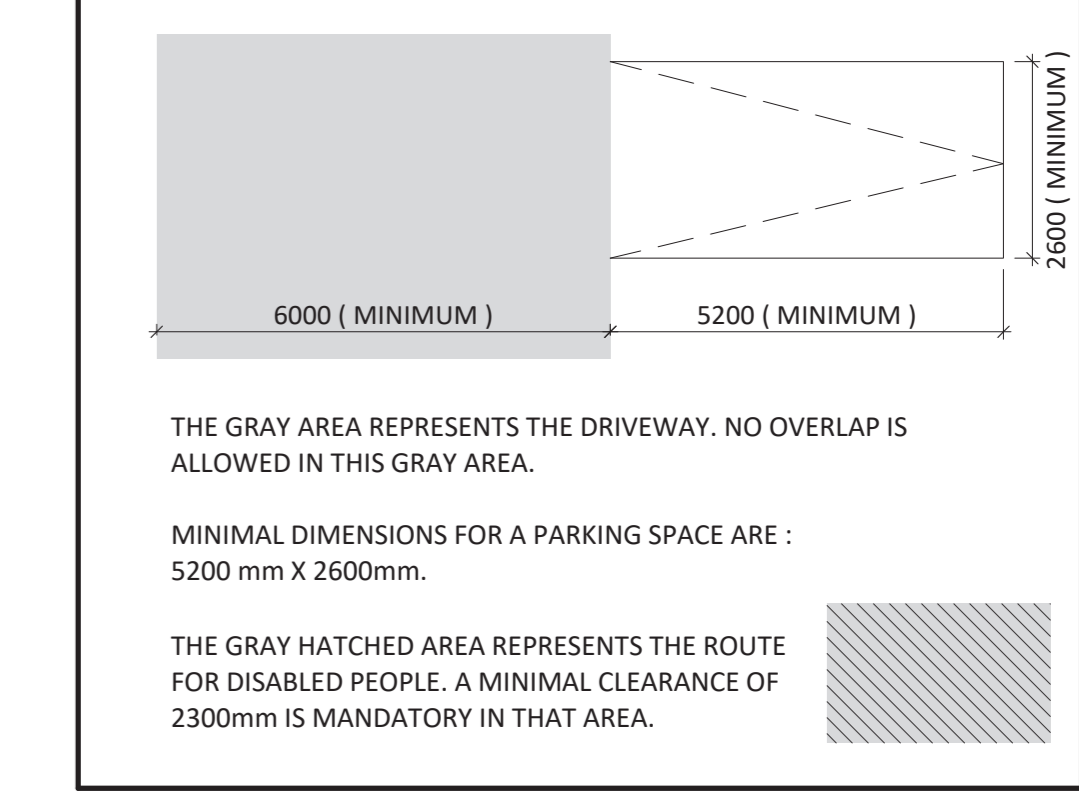
	BULKHEAD		ELEVATION REFERENCE
	OUTPUT AND AIR INTAKE		SECTION REFERENCE
	WINDOW TYPE		TYPICAL COMPOSITION, SEE SHEET A752
	DOOR TYPE		NIVEAU 50000
	CURTAIN WALL		STRUCTURAL GRID
	CEILING TYPE		Name of the room 101
	ADDENDA		PLAN ANNOTATIONS
	NOTICE OF MODIFICATION		ELEVATION ANNOTATIONS
	DIRECTIVE		FINISH ANNOTATIONS
	ARCHITECTURAL ELEVATION		TYPICAL WALL
	GEODESIC ELEVATION		TRANSPONDER
	BACKING		FIREFIGHTER PHONE
	SURVEILLANCE CAMERA		PULL STATION
	ELECTRICAL PANEL		INTERCOM
	FIXED PART OF THE PATIO DOOR		PUSH BUTTON FOR UNIVERSAL ACCESS
	OPENING PART OF THE PATIO DOOR		FIRE ALARM PANEL
	THE ACTIVE DOOR IS INDICATED BY THE LOCATION OF THE DOOR NUMBER		CARD READER
	Name of the drawing 1 A101		DRAINAGE (SEE MECHANICAL ENGINEER)
	Scale of the drawing		VENT (SEE MECHANICAL ENGINEER)
			STORM (SEE MECHANICAL ENGINEER)

GENERAL NOTES

- FOR THE DOORS LOCATED IN A BARRIER-FREE PATH OF TRAVEL PROVIDE TO RESPECT THE PRESCRIBED SIDE CLEARANCES. LEFT SIDE CLEARANCES OF AT LEAST 600mm IF THE PIVOT DOOR TOWARDS THE APPROACH AND 300mm IF THE PIVOT DOOR TOWARDS THE APPROACH, AS SHOWN IN THE FOLLOWING SKETCH.

<p>COMMUN SPACE & BARRIER-FREE DWELLING UNITS</p>	<p>**ENTRANCE DOORS OF NON BARRIER-FREE DWELLING UNITS ONLY REQUIRED THE 300mm RIGHT SIDE CLEARANCE**</p>
---	---
- REPLACE THE 16mm TYPE "X" GYPSUM BY A 16mm TYPE "X" SHOCK RESISTANCE GYPSUM, PLASTERED AND PAINTED/ONIONS ON THE PARKING SIDE ONLY.
- FOR ALL THE DEMISING WALL, ALL THE GYPSUM JOINTS WILL BE ACOUSTICALLY SEALED AT ALL ROWS AS WELL AS AT THE PERIMETER OF THE WALL.
- ALL PARTITIONS ARE FROM CONCRETE SLAB TO NEXT LEVEL CONCRETE SLAB EXCEPT AS OTHERWISE.
- A WATER RESISTANT GYPSUM MUST BE INSTALLED ON WALLS, PARTITIONS, BULKHEAD AND GYPSUM CEILINGS IN ALL BATHROOM AND WC.
 - *FOR FIRE-RATED PARTITIONS: ADD THE WATER RESISTANT GYPSUM OVER THE PARTITION.
 - *FOR PARTITIONS WITHOUT FIRE RESISTANCE: REPLACE THE GYPSUM WITH A WATER RESISTANT GYPSUM OF THE SAME THICKNESS AS PREVIOUSLY PROVIDED.
- THE SPRINKLERS, WATER SUPPLY AND ELECTRICAL WIRING MUST PASS INTO THE INTERIOR PARTITIONS OF THE FLA UNITS.
- THE SPECIALIZED CONTRACTOR (INTERIOR SYSTEM) MUST PROVIDE THE STRUCTURAL CALCULATIONS OF THE EXTERIOR STUBS BY A SPECIALIZED ENGINEER. IT MUST ALSO PROVIDE ALL THE REINFORCEMENT NECESSARY TO COMPLETE THE EXTERIOR WALL WHILE RESPECTING THE ARCHITECTURAL PLANS.
- PROVIDE BACKING IN GALVANIZED STEEL SHEET FOR ALL CABINETS AND OTHER FURNITURE (SEE DESIGN)
- PROVIDE BACKING IN PLYWOOD 19mm FOR ALL GRAB BARS, WALL TELEVISIONS, TOILET PARTITIONS, HANDRAILS (SEE DESIGNER AND TECHNICAL SHEET FOR BATHROOM ACCESSORIES)

PARKING DIMENSIONS





100-788, BOUL SAINT-JOSEPH, GATINEAU, QC J8Y 4B8



INSEE 361-9584 INFO@PMAARCHITECTES.COM
3075, CHEMIN DES QUATRE-BOURGEOIS
QUÉBEC (QC) G1W 3K4
PMAARCHITECTES.COM



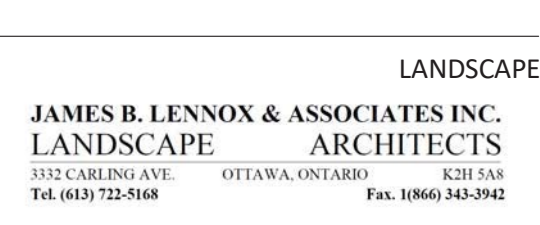
53, SAINT-RAYMOND BOULEVARD, GATINEAU, QC J8Y 1R8



388 Cooper Street, Suite 300, Ottawa ON K2P 2H7
613.276.3700 www.fotenn.com



2650, QUEENSVIEW DRIVE, SUITE 100, OTTAWA, ON K2B 8H6



1440 LANSBURY AVE. OTTAWA, ON K1R 6K7
TEL: 453-7246 FAX: 453-7246



14 CONCOURSE GATE, SUITE 500, NEPEAN, ON K2E 7S6



NO	DATE	DESCRIPTION

IT IS THE RESPONSIBILITY OF THE APPROPRIATE CONTRACTOR TO CHECK AND VERIFY ALL DIMENSIONS ON THE SITE AND TO REPORT ALL ERRORS AND/OR OMISSIONS TO THE ARCHITECT. ALL CONTRACTORS MUST COMPLY WITH ALL PERTINENT CODES AND BY-LAWS. DO NOT SCALE DRAWINGS.

THIS DOCUMENT AND ITS CONTENT IS COPYRIGHTED. ANY REPRODUCTION IS PROHIBITED UNLESS GRANTED BY THE ARCHITECT.

SITE PLAN APPLICATION DO NOT USE FOR CONSTRUCTION 2021-10-19

DATE	DESIGNED
2021-10-19	Concepteur
DATE	DRAWN
	Auteur
PROJECT No	CHECKED
20055	Vérificateur

SHEET TITLE

FLOOR PLAN - LEVEL P3

LEGEND

	BULKHEAD		ELEVATION REFERENCE
	OUTPUT AND AIR INTAKE		SECTION REFERENCE
	WINDOW TYPE		TYPICAL COMPOSITION, SEE SHEET A752
	DOOR TYPE		LEVEL
	CURTAIN WALL		STRUCTURAL GRID
	CEILING TYPE		ROOM NAME AND NUMBER
	ADDENDA		PLAN ANNOTATIONS
	NOTICE OF MODIFICATION		ELEVATION ANNOTATIONS
	DIRECTIVE		FINISH ANNOTATIONS
	ARCHITECTURAL ELEVATION		TYPICAL WALL
	GEODESIC ELEVATION		TRANSPONDER
	BACKING		FIREFIGHTER PHONE
	SURVEILLANCE CAMERA		PULL STATION
	ELECTRICAL PANEL		INTERCOM
	FIXED PART OF THE PATIO DOOR		PUSH BUTTON FOR UNIVERSAL ACCESS
	OPENING PART OF THE PATIO DOOR		FIRE ALARM PANEL
	THE ACTIVE DOOR IS INDICATED BY THE LOCATION OF THE DOOR NUMBER		CARD READER
	Name of the drawing Scale of the drawing		DRAINAGE (SEE MECHANICAL ENGINEER)
			VENT (SEE MECHANICAL ENGINEER)
			STORM (SEE MECHANICAL ENGINEER)

GENERAL NOTES

- FOR THE DOORS LOCATED IN A BARRIER-FREE PATH OF TRAVEL PROVIDE TO RESPECT THE PRESCRIBED SIDE CLEARANCES, LEFT SIDE CLEARANCES OF AT LEAST 600mm IF THE PIVOT DOOR TOWARDS THE APPROACH AND 300mm IF THE PIVOT DOOR TOWARDS THE APPROACH, AS SHOWN IN THE FOLLOWING SKETCH.

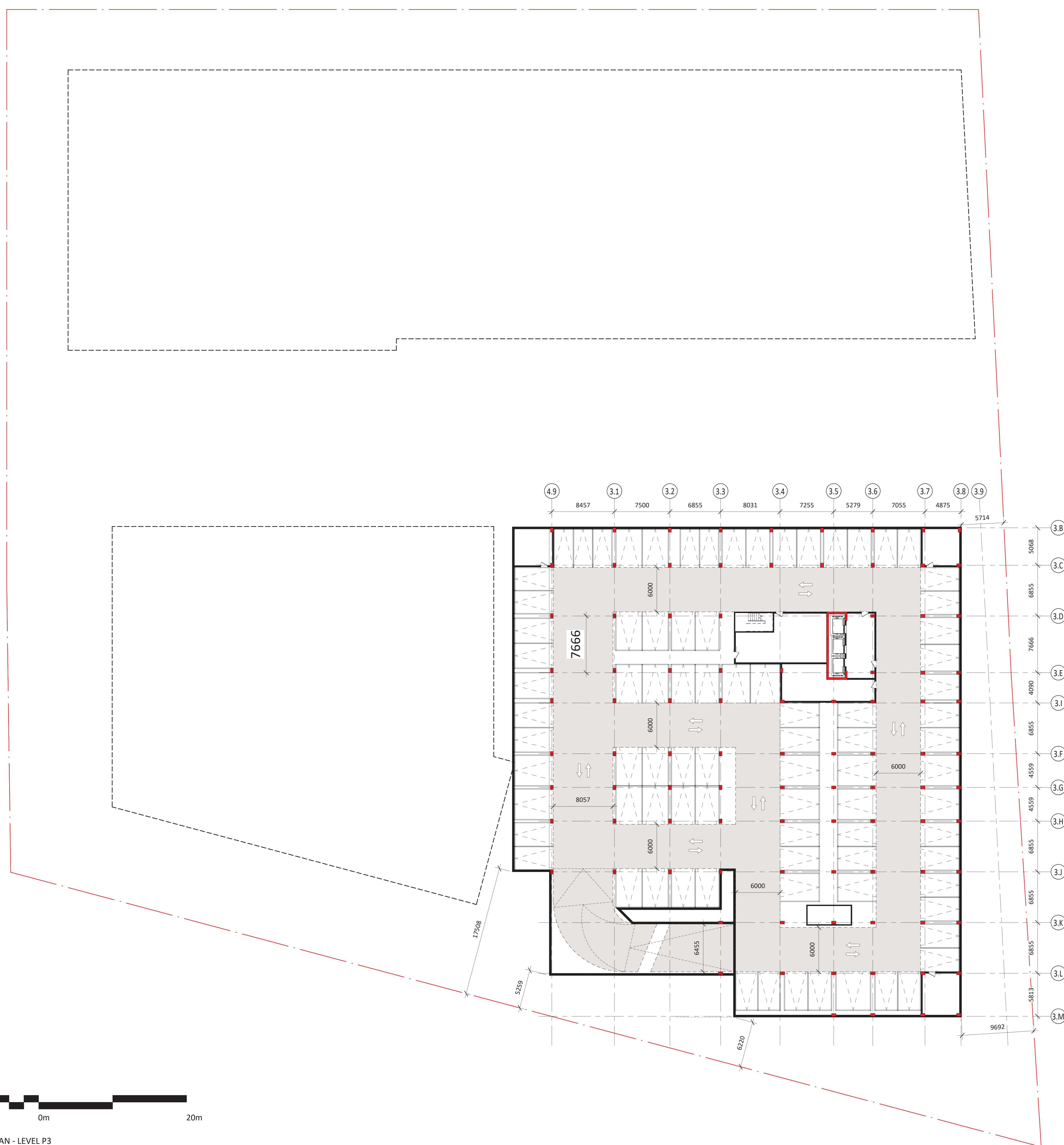
COMMUN SPACE & BARRIER-FREE DWELLING UNITS 	**ENTRANCE DOORS OF NON BARRIER-FREE DWELLING UNITS ONLY REQUIRED THE 300mm RIGHT SIDE CLEARANCE**
---	---
- REPLACE THE 15mm TYPE "X" GYPSUM BY A 15mm TYPE "X" SHOCK RESISTANCE GYPSUM, PLASTERED AND PAINTED/JOINTS ON THE PARKING SIDE ONLY.
- FOR ALL THE DEMISING WALL ALL THE GYPSUM JOINTS WILL BE ACOUSTICALLY SEALED AT ALL ROWS AS WELL AS AT THE PERIMETER OF THE WALL.
- ALL PARTITIONS ARE FROM CONCRETE SLAB TO NEXT LEVEL CONCRETE SLAB EXCEPT AS OTHERWISE.
- A WATER RESISTANT GYPSUM MUST BE INSTALLED ON WALLS, PARTITIONS, BULKHEAD AND GYPSUM CEILINGS IN ALL BATHROOM AND WC.
*FOR FIRE-RATED PARTITIONS: ADD THE WATER RESISTANT GYPSUM OVER THE PARTITION.
*FOR PARTITIONS WITHOUT FIRE RESISTANCE: REPLACE THE GYPSUM WITH A WATER RESISTANT GYPSUM OF THE SAME THICKNESS AS PREVIOUSLY PROVIDED.
- THE SPRINKLERS, WATER SUPPLY AND ELECTRICAL WIRING MUST PASS INTO THE INTERIOR PARTITIONS OF THE FLA UNITS.
- THE SPECIALIZED CONTRACTOR (INTERIOR SYSTEM) MUST PROVIDE THE STRUCTURAL CALCULATIONS OF THE EXTERIOR STUDS BY A SPECIALIZED ENGINEER. IT MUST ALSO PROVIDE ALL THE REINFORCEMENT NECESSARY TO COMPLETE THE EXTERIOR WALL WORK WHILE RESPECTING THE ARCHITECTURAL PLANS.
- PROVIDE BACKING IN GALVANIZED STEEL SHEET FOR ALL CABINETS AND OTHER FURNITURE (SEE DESIGN)
- PROVIDE BACKING IN PLYWOOD 19mm FOR ALL GRAB BARS, WALL TELEVISIONS, TOILET PARTITIONS, HANDRAILS (SEE DESIGNER AND TECHNICAL SHEET FOR BATHROOM ACCESSORIES)

PARKING DIMENSIONS

THE GRAY AREA REPRESENTS THE DRIVEWAY. NO OVERLAP IS ALLOWED IN THIS GRAY AREA.

MINIMAL DIMENSIONS FOR A PARKING SPACE ARE : 5200 mm X 2600mm.

THE GRAY HATCHED AREA REPRESENTS THE ROUTE FOR DISABLED PEOPLE. A MINIMAL CLEARANCE OF 2300mm IS MANDATORY IN THAT AREA.



1 FLOOR PLAN - LEVEL P3
1:200