

DESCRIPTION EXISTING PROPOSED DESCRIPTION EXISTING PROPOSED DESCRIPTION EXISTING PROPOSED

SITE FEATURES

Table with 3 columns: DESCRIPTION, EXISTING, PROPOSED. Rows include PROPERTY LINE, TOP OF SLOPE, TERRACING (3:1 TYPICAL), DITCH/SWALE AND DIRECTION OF FLOW, EDGE OF SHOULDER, EDGE OF PAVEMENT, ROAD/ALIGNMENT, CHAINLINK FENCE, SILT FENCE, SIDEWALK, BARRIER CURB, MOUNTABLE CURB, DEPRESSED CURB, TACTILE WALKING SURFACE INDICATOR 'TWSI', GUARDRAIL, JERSEY BARRIERS, BUILDING ENTRY/EXIT WITH RISERS, BUILDING ENTRY/EXIT BARRIER FREE, BUILDING ENTRY/EXIT OVERHEAD DOOR, POST, SIGN, BOLLARD, VEGETATION.

UTILITY AND STRUCTURES

Table with 3 columns: DESCRIPTION, EXISTING, PROPOSED. Rows include HYDRO (OVERHEAD), HYDRO, POWER, ELECTRICAL, BELL (OVERHEAD), BELL, CABLE (OVERHEAD), CABLE TV, FIBRE OPTIC, STREETLIGHT, GASMAIN, JOINT USE TRENCH - BELL/CABLE TV, JOINT USE TRENCH - HYDRO/BELL/CABLE TV, JOINT USE TRENCH - HYDRO/BELL/CABLE TV/GAS, JOINT USE TRENCH - BELL/CABLE TV/GAS, DUCT CROSSING WITH NUMBER AND TYPE OF DUCTS, STREETLIGHT, STREETLIGHT DISCONNECT, HYDRO TRANSFORMER, HYDRO SWITCHING KIOSK, HYDRO MANHOLE, HYDRO METER, UTILITY POLE AND GUY WIRE, CABLE PEDESTAL, BELL PEDESTAL, BELL MANHOLE, BELL GROUND LEVEL BOX, ENDWALL, COMMUNITY MAILBOX, GAS VALVE, GAS METER, TRAFFIC MANHOLE, TRAFFIC HAND HOLE, TRAFFIC JOINT USE POLE, TRAFFIC MAST ARM, TRAFFIC CONDUIT.

SERVICES AND STRUCTURES

Table with 3 columns: DESCRIPTION, EXISTING, PROPOSED. Rows include SANITARY SEWER, COMBINATION SEWER, STORM SEWER, STORM SUBDRAIN, STORM CULVERT, SANITARY MANHOLE, COMBINATION MANHOLE, STORM MANHOLE, CATCHBASIN MANHOLE, CATCHBASIN, DOUBLE CATCHBASIN, CATCHBASIN TEE (S30), CATCHBASIN ELBOW (S31), AREA DRAIN, DITCH INLET CATCHBASIN, WATERMAIN, IRRIGATION, VALVE AND VALVE BOX, VALVE AND VALVE CHAMBER, FIRE HYDRANT, SIAMSESE CONNECTION, WATER METER, REMOTE WATER METER, 45° BEND, 22.5° BEND, 11.25° BEND, TEE, REDUCER, CROSS, CURB STOP, WATER WELL.

GRADING

Table with 3 columns: DESCRIPTION, EXISTING, PROPOSED. Rows include GROUND ELEVATION, SWALE ELEVATION, TOP OF GRATE ELEVATION, TOP OF WALL ELEVATION, BOTTOM OF WALL ELEVATION, FINISHED FLOOR ELEVATION, TOP OF FOUNDATION ELEVATION, BASEMENT FLOOR ELEVATION, PARKING LEVEL ELEVATION, UNDERSIDE OF FOOTING ELEVATION, ORIGINAL GROUND ELEVATION, TOP OF ROCK ELEVATION, CONTOUR LINES, SLOPE AND DIRECTION OF FLOW, OVERLAND FLOW ROUTE ONSITE, OVERLAND FLOW ROUTE EXTERNAL.

STORMWATER MANAGEMENT

Table with 3 columns: DESCRIPTION, EXISTING, PROPOSED. Rows include STORM DRAINAGE AREA BOUNDARY, STORM DRAINAGE AREA NUMBER, STORM DRAINAGE AREA IN HECTARES, RUN-OFF COEFFICIENT.

SANITARY DRAINAGE

Table with 3 columns: DESCRIPTION, EXISTING, PROPOSED. Rows include SANITARY DRAINAGE AREA BOUNDARY, SANITARY DRAINAGE AREA NUMBER, SANITARY DRAINAGE AREA IN HECTARES, POPULATION.

GEOTECHNICAL

Table with 3 columns: DESCRIPTION, EXISTING, PROPOSED. Rows include BOREHOLE, TEST PIT, COREHOLE, PIEZOMETER, MONITORING WELL.

MISCELLANEOUS

Table with 3 columns: DESCRIPTION, EXISTING, PROPOSED. Rows include REMOVE, RELOCATE, ADJUST, LIGHT DUTY PAVEMENT, HEAVY DUTY PAVEMENT, ROAD REINSTATEMENT AS PER CITY STANDARD R10.

PAVEMENT STRUCTURE:

Table with 3 columns: DESCRIPTION, EXISTING, PROPOSED. Rows include LIGHT DUTY ASPHALT PAVEMENT, HEAVY DUTY ASPHALT PAVEMENT, HEAVY DUTY PAVEMENT STRUCTURE FOR NEW ACCESS LANES OVER EARTH, HEAVY DUTY PAVEMENT STRUCTURE FOR NEW ACCESS LANES AREAS OVER PARKING STRUCTURES, LIGHT DUTY PAVEMENT STRUCTURE FOR NEW PARKING OVER EARTH, LIGHT DUTY PAVEMENT STRUCTURE FOR NEW ACCESS LANES AREAS OVER PARKING STRUCTURES.

GENERAL NOTES

- 1. ALL WORKS AND MATERIALS SHALL CONFORM TO THE LATEST REVISIONS OF THE STANDARDS AND SPECIFICATIONS OF THE CITY OF OTTAWA, ONTARIO PROVINCIAL STANDARD DRAWINGS (OPSD) AND SPECIFICATIONS (OPSS), WHERE APPLICABLE.
2. THE LOCATION OF UTILITIES IS APPROXIMATE ONLY...
3. THE CONTRACTOR SHALL VERIFY THE LOCATION AND ELEVATION OF EXISTING SERVICES PRIOR TO ANY CONSTRUCTION...
4. ALL ELEVATIONS ARE GEODETIC AND UTILIZE METRIC UNITS...
5. THE CONTRACTOR SHALL BE RESPONSIBLE FOR OBTAINING ALL PERMITS...
6. ALL WORK SHALL BE COMPLETED IN ACCORDANCE WITH THE 'OCCUPATIONAL HEALTH AND SAFETY ACT AND REGULATIONS...
7. CONTRACTOR SHALL BE RESPONSIBLE FOR ALL EXCAVATION, BACKFILL AND REINSTATEMENT OF ALL AREAS DISTURBED...
8. ANY AREAS BEYOND THE LIMIT OF THE SITE DISTURBED DURING CONSTRUCTION SHALL BE RESTORED TO ORIGINAL CONDITION...
9. THE CONTRACTOR SHALL COMPLY WITH THE CITY OF OTTAWA REQUIREMENTS FOR TRAFFIC CONTROL WHEN WORKING ON CITY STREETS...
10. THE SUPPORT OF ALL UTILITIES SHALL BE IN ACCORDANCE WITH THE REQUIREMENTS OF THE AUTHORITY HAVING JURISDICTION...
11. THERE WILL BE NO SUBSTITUTION OF MATERIALS UNLESS WRITTEN APPROVAL BY THE ENGINEER HAS BEEN OBTAINED...
12. EXCESS EXCAVATED MATERIAL SHALL BE REMOVED FROM THE SITE...
13. THE SITE LAYOUT IS THE RESPONSIBILITY OF THE CONTRACTOR...
14. ALL EDGES OF DISTURBED PAVEMENT SHALL BE SAW CUT TO FORM A NEAT AND STRAIGHT LINE...
15. FOR GEOTECHNICAL INFORMATION REFER TO GEOTECHNICAL INVESTIGATION REPORT PREPARED BY EXP SERVICES INC...
16. THE CONTRACTOR SHALL APPRAISE HIS/HERSELF OF ALL SURFACE AND SUBSURFACE CONDITIONS...
17. DO NOT CONSTRUCT USING DRAWINGS THAT ARE NOT MARKED 'ISSUED FOR CONSTRUCTION'.
18. FOR TOPOGRAPHICAL INFORMATION REFER TO PLAN PREPARED BY ANIS, O'SULLIVAN, VOLLEBEKK SURVEYING LTD.
19. CIVIL DRAWINGS TO BE READ IN CONJUNCTION WITH ARCHITECTURAL, MECHANICAL, ELECTRICAL, STRUCTURAL, LANDSCAPE AND LEGAL DRAWINGS.

STORM SEWER NOTES:

- 1. ALL STORM SEWER MATERIALS AND INSTALLATION SHALL CONFORM TO THE LATEST REVISIONS OF THE STANDARDS AND SPECIFICATIONS OF THE CITY OF OTTAWA, ONTARIO PROVINCIAL STANDARD DRAWINGS (OPSD) AND SPECIFICATIONS (OPSS).
2. ALL PVC STORM SEWERS ARE TO BE SDR 35 APPROVED PER C.S.A. B182.2 OR LATEST AMENDMENT...
3. THE CONTRACTOR SHALL CONSTRUCT FLEXIBLE STORM SEWERS IN ACCORDANCE WITH OPSD 802.010 AND 802.013...
4. SEWER BEDDING AS PER CITY STANDARD S6 & S7.
5. ALL ABANDONED EXISTING SEWERS TO BE CAPPED AT THE PROPERTY LINE...
6. WITHIN THE FROST ZONE, THE BACKFILL IN THE SERVICE TRENCHES SHOULD MATCH THE SOIL ON SIDES...
7. ALL STORM SERVICES TO BE EQUIPPED WITH APPROVED BACKWATER VALVES...
8. THE CONTRACTOR SHALL CONDUCT CCTV INSPECTION OF ALL NEWLY INSTALLED STORM SEWERS AND EXISTING SEWERS CONNECTED TO THE TEST SHALL BE PERFORMED IMMEDIATELY AFTER SEWERS INSTALLED.

WATERMAIN NOTES:

- 1. ALL WATERMAIN MATERIALS AND INSTALLATION SHALL CONFORM TO THE LATEST REVISIONS OF THE STANDARDS AND SPECIFICATIONS OF THE CITY OF OTTAWA, ONTARIO PROVINCIAL STANDARD DRAWINGS (OPSD) AND SPECIFICATIONS (OPSS).
2. NO WORK SHALL COMMENCE UNLESS A CITY WATER WORKS INSPECTOR IS ON SITE...
3. WATERMAIN TRENCH AND BEDDING SHALL BE IN ACCORDANCE WITH CITY OF OTTAWA STANDARD W17...
4. WATERMAIN IS TO BE PVC DR18 WITH TRACER WIRE AS PER CITY OF OTTAWA STANDARD W36...
5. VALVE BOXES AS PER CITY OF OTTAWA DETAIL W24.
6. ALL FIRE HYDRANTS TO BE INSTALLED AS PER CITY STANDARD W19 AND LOCATED AS PER CITY STANDARD W18...
7. CATHODIC PROTECTION IS REQUIRED ON ALL METALLIC FITTINGS...
8. ALL WATERMAIN TO BE INSTALLED AT MINIMUM COVER OF 2.4m...
9. IF WATERMAIN MUST BE DEFLECTED TO MEET ALIGNMENT...
10. DISINFECTION AND TESTING OF WATERMAIN TO BE IN ACCORDANCE WITH CITY OF OTTAWA STANDARDS.
11. INSTALLATION OF WATER METER AND REMOTE RECEPTACLE SHALL BE IN ACCORDANCE WITH CITY OF OTTAWA STANDARDS.
12. INSULATION FOR WATERMAIN CROSSING OVER AND BELOW SEWER SHALL BE IN ACCORDANCE WITH CITY OF OTTAWA STD. W25.2 AND W25.

ROAD NOTES:

- 1. PAVEMENT REINSTATEMENT FOR SERVICE AND UTILITY CUTS SHALL BE IN ACCORDANCE WITH CITY OF OTTAWA STD. R10 AND OPSD 509.010, OPSD 310.
2. GRANULAR 'A' SHALL BE PLACED TO A MINIMUM THICKNESS OF 300mm...
3. ALL GRANULAR FOR ROADS SHALL BE COMPACTED TO A MINIMUM OF 100% STANDARD PROCTOR MAXIMUM DRY DENSITY.

SANITARY SEWER NOTES:

- 1. ALL SANITARY SEWER MATERIALS AND INSTALLATION SHALL CONFORM TO THE LATEST REVISIONS OF THE STANDARDS AND SPECIFICATIONS OF THE CITY OF OTTAWA, ONTARIO PROVINCIAL STANDARD DRAWINGS (OPSD) AND SPECIFICATIONS (OPSS).
2. ALL SANITARY SEWERS SHALL BE PVC SDR 35, IPEX 'RING-TITE' (OR EQUIVALENT)...
3. SANITARY SEWER TRENCH AND BEDDING SHALL BE AS PER CITY OF OTTAWA STD. S6 AND S7...
4. THE CONTRACTOR SHALL CONDUCT CCTV INSPECTION OF ALL NEWLY INSTALLED SANITARY SEWERS...
5. THE CONTRACTOR SHALL CONDUCT INFILTRATION/EXFILTRATION (AS PER CURRENT OPSS) TESTING...
6. THE CONTRACTOR SHALL CONSTRUCT FLEXIBLE SANITARY SEWERS IN ACCORDANCE WITH OPSD 802.010 AND 802.013...
7. ALL ABANDONED EXISTING SEWERS TO BE CAPPED AT THE PROPERTY LINE...
8. ALL SANITARY BUILDING CONNECTIONS TO BE EQUIPPED WITH A SANITARY BACKWATER VALVE...
9. WITHIN THE FROST ZONE, THE BACKFILL IN THE SERVICE TRENCHES SHOULD MATCH THE SOIL ON SIDES...
10. ALL UNDERGROUND PARKING FLOOR DRAINAGE IS TO BE DIRECTED TO THE SANITARY SEWER...
11. WITHIN THE FROST ZONE, THE BACKFILL IN THE SERVICE TRENCHES SHOULD MATCH THE SOIL ON SIDES...
12. ALL UNDERGROUND PARKING FLOOR DRAINAGE IS TO BE DIRECTED TO THE SANITARY SEWER...

CAUTION THE POSITION OF ALL POLE LINES, CONDUITS, WATERMANS, SEWERS AND OTHER UNDERGROUND AND OVERGROUND UTILITIES AND STRUCTURES IS NOT NECESSARILY SHOWN ON THE CONTRACT DRAWINGS...

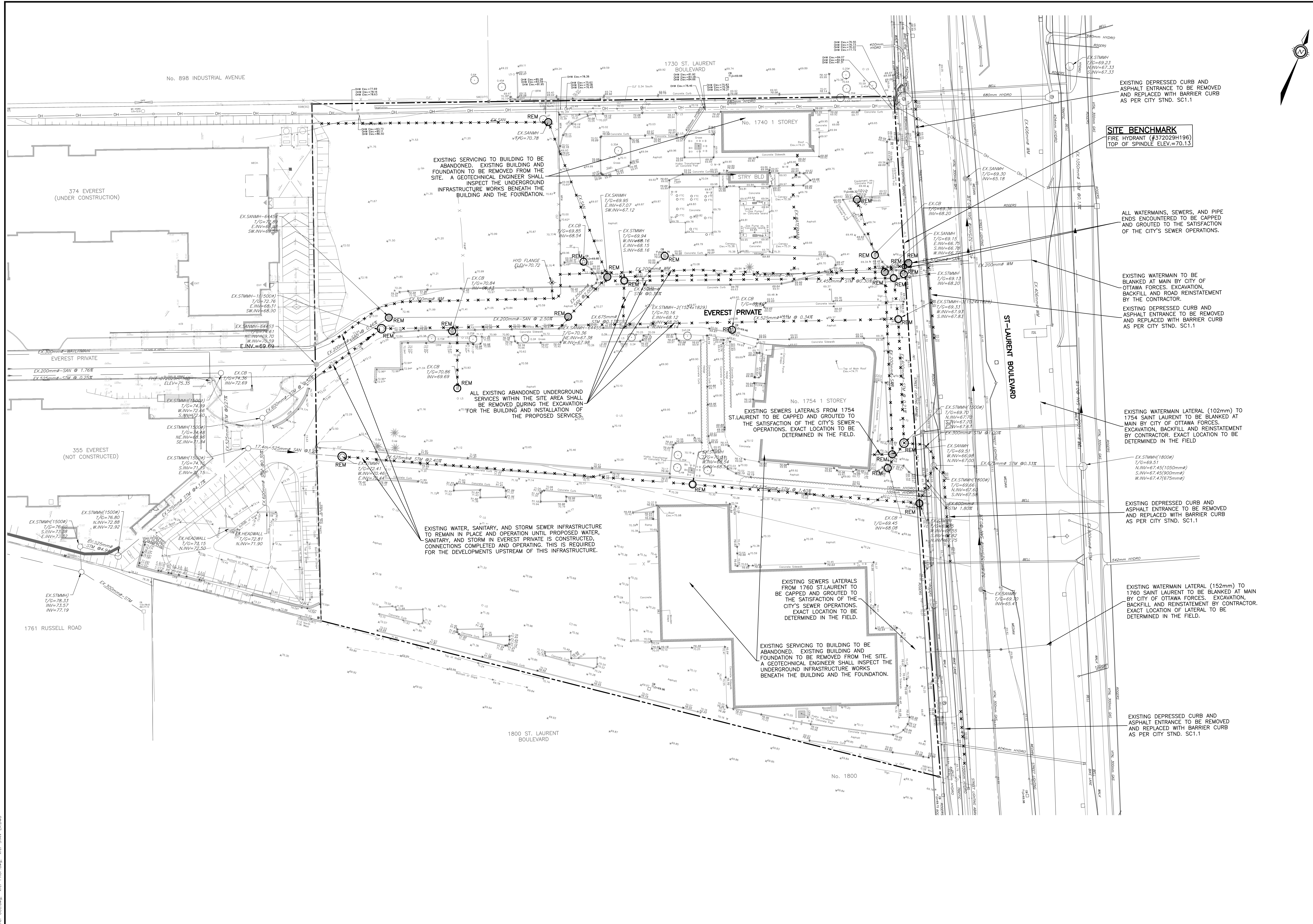
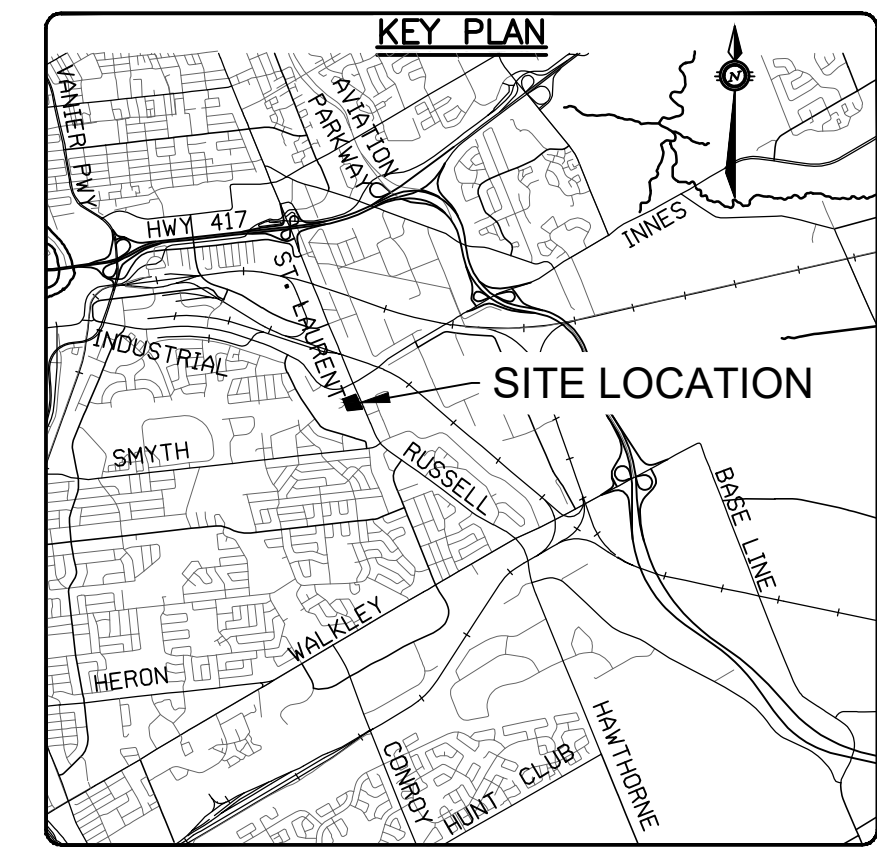
Table with 6 columns: REV, REVISION DESCRIPTION, DATE, BY, APPD, REV, REVISION DESCRIPTION, DATE, BY, APPD. Includes rows for ISSUED FOR APPROVAL, REVISED PER CITY COMMENTS, ISSUED FOR SPA, ISSUED FOR COORDINATION.

Client information: 11421247 CANADA INC., 100-768 ST. JOSEPH BOULEVARD, GATINEAU, QC. J8Y 4B8. Project: ST. LAURENT BOULEVARD DEVELOPMENT, 1740-1760 ST. LAURENT BLVD., OTTAWA, ON. Includes logos for exp. and project details.

LEGEND AND NOTES

Vertical text on the left edge containing drawing file information and dates.

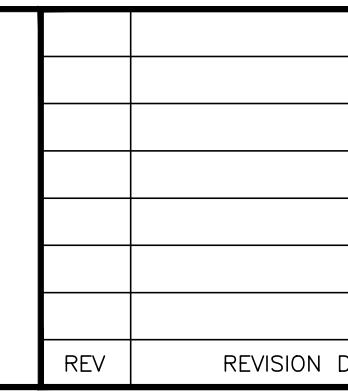
Vertical text on the right edge containing drawing number DOT-12-21-0177.



- NOTES:**
1. THE LOCATION OF UTILITIES IS APPROXIMATE ONLY, AND THE EXACT LOCATION SHOULD BE DETERMINED BY CONSULTING THE MUNICIPAL AUTHORITIES AND UTILITY COMPANIES CONCERNED. THE CONTRACTOR IS RESPONSIBLE TO PROVIDE THE LOCATION AND STATUS OF UTILITIES AND EQUIPMENT FROM DAMAGE UNTIL SUCH TIME AS THE SERVICE PROVIDER HAS CONFIRMED IN WRITING THE SERVICE IS ABANDONED AND CAN BE REMOVED. THE CONTRACTOR SHALL BE RESPONSIBLE FOR REPAIR OR REPLACEMENT OF ANY SERVICES OR UTILITIES DISTURBED DURING CONSTRUCTION, TO THE SATISFACTION OF THE AUTHORITY HAVING JURISDICTION.
 2. THE CONTRACTOR SHALL VERIFY THE LOCATION AND ELEVATION OF EXISTING SERVICES PRIOR TO COMMENCING CONSTRUCTION. THE CONTRACTOR SHALL CONFIRM LOCATIONS AND ELEVATIONS OF EXISTING SERVICES PRIOR TO COMMENCING CONSTRUCTION. ALL DIMENSIONS SHALL BE CHECKED AND VERIFIED IN THE FIELD BY THE CONTRACTOR PRIOR TO THE START OF CONSTRUCTION. ANY DISCREPANCIES, INTERPRETATIONS, CHANGES AND ADDITIONS TO THESE DRAWINGS MUST BE BROUGHT TO THE ATTENTION OF THE ENGINEER, WHEN NOTED AND BEFORE PROCEEDING WITH CONSTRUCTION WORKS. DO NOT CONTINUE CONSTRUCTION IN AREAS WHERE DISCREPANCIES APPEAR UNTIL SUCH DISCREPANCIES HAVE BEEN RESOLVED.
 3. FOR ADDITIONAL PROJECT NOTES REFER TO DRAWING C001.

CAUTION
THE POSITION OF ALL POLE LINES, CONDUITS, WATERMANS, SEWERS AND OTHER UNDERGROUND AND OVERGROUND UTILITIES AND STRUCTURES IS NOT NECESSARILY SHOWN ON THE CONTRACT DRAWINGS, AND WHERE SHOWN, THE ACCURACY OF THE POSITION OF SUCH UTILITIES AND STRUCTURES IS NOT GUARANTEED. BEFORE STARTING WORK, DETERMINE THE EXACT LOCATION OF ALL SUCH UTILITIES AND STRUCTURES AND ASSUME ALL LIABILITY FOR DAMAGE TO THEM.

REV	REVISION DESCRIPTION	DATE	BY	APPROV
4	ISSUED FOR APPROVAL	03/10/23	AC	BMT
3	REVISED PER CITY COMMENTS	31/08/23	SAB	BMT
2	ISSUED FOR SPA	16/08/21	AE	BMT
1	ISSUED FOR COORDINATION	09/07/21	AE	BMT

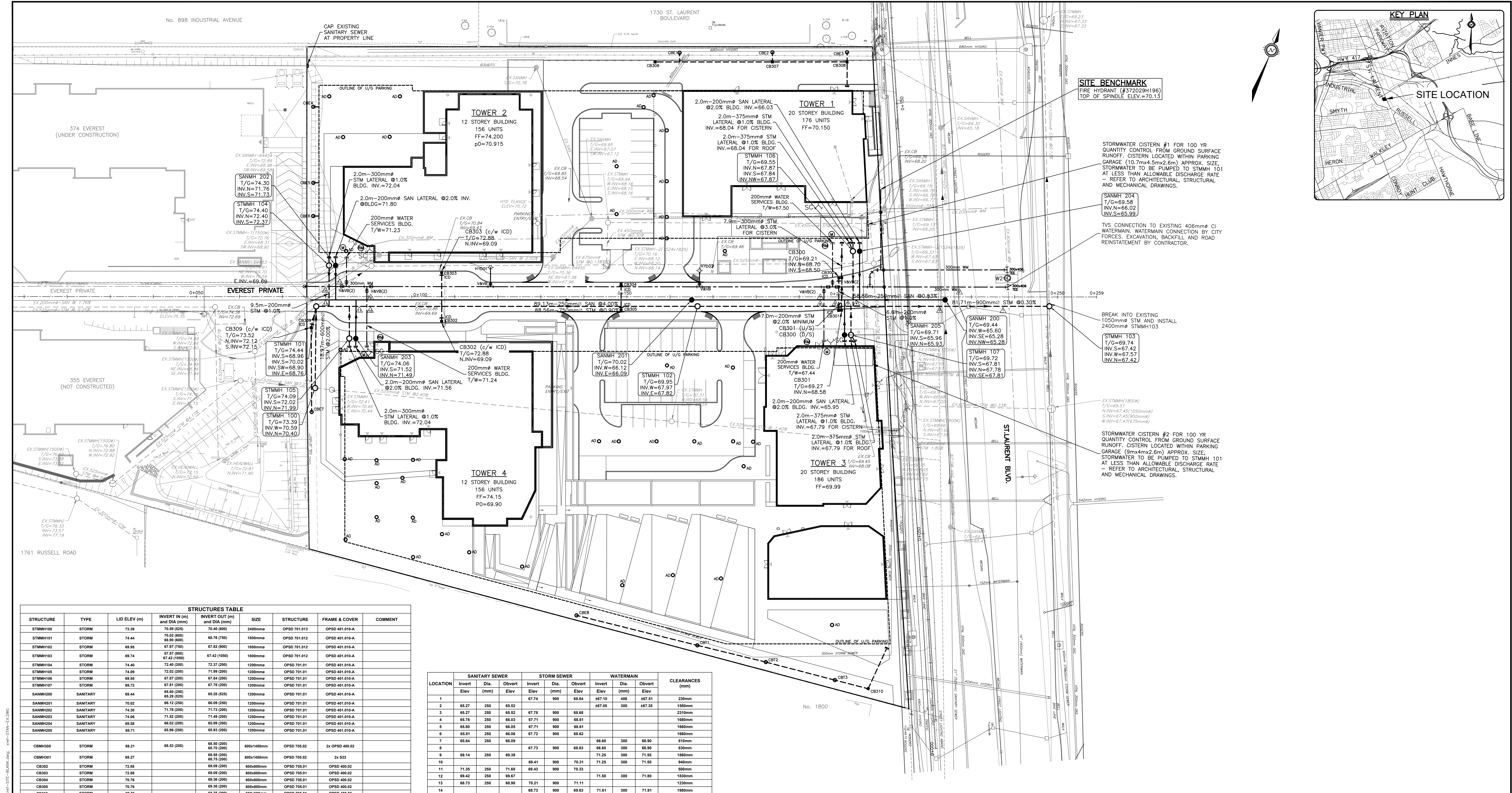


DESIGNED BY	REVIEWED BY	CLIENT
		11421247 CANADA INC. 100-768 ST. JOSEPH BOULEVARD GATINEAU, QC. J8Y 4B8

exp. Services Inc.
1-1-613.688.1899 | F-1-613.225.7330
1000 Wellington Street West, Unit 100
Ottawa, ON K2B 8R6
Canada
www.exp.com

• BUILDINGS • EARTH & ENVIRONMENT • ENERGY •
• INDUSTRIAL • INFRASTRUCTURE • SUSTAINABILITY •

PROJECT No.	PROJECT	PROJECT No.
OTT-260579-B0	ST. LAURENT BOULEVARD DEVELOPMENT 1740-1760 ST. LAURENT BLVD., OTTAWA, ON	OTT-260579-B0
DATE	DATE	DATE
OCT 2020		OCT 2020
DRAWING No.	DRAWING No.	DRAWING No.
C002	EXISTING CONDITIONS AND REMOVALS PLAN	C002



SITE BENCHMARK
FIRE HYDRANT (#372029H196)
TOP OF SPINDLE ELEV.=70.13

STORMWATER CISTERN #1 FOR 100 YR QUANTITY CONTROL FROM GROUND SURFACE RUNOFF. CISTERN LOCATED WITHIN PARKING GARAGE (10.7m x 4.5m x 2.6m) APPROX. SIZE. STORMWATER TO BE PUMPED TO STMMH 101 AT LESS THAN ALLOWABLE DISCHARGE RATE AND MECHANICAL DRAWINGS.

SANMH 204
T/G=69.58
INV.N=66.02
INV.S=65.99

TVS CONNECTION TO EXISTING 406mm Ø CI WATERMAIN. WATERMAIN CONNECTION BY CITY FORCES. EXCAVATION, BACKFILL AND ROAD REINSTATEMENT BY CONTRACTOR.

BREAK INTO EXISTING 1050mm Ø STM AND INSTALL 2400mm Ø STMMH103

STMMH 103
T/G=69.74
INV.S=67.42
INV.N=67.42

STORMWATER CISTERN #2 FOR 100 YR QUANTITY CONTROL FROM GROUND SURFACE RUNOFF. CISTERN LOCATED WITHIN PARKING GARAGE (9m x 4m x 2.6m) APPROX. SIZE. STORMWATER TO BE PUMPED TO STMMH 101 AT LESS THAN ALLOWABLE DISCHARGE RATE - REFER TO ARCHITECTURAL, STRUCTURAL AND MECHANICAL DRAWINGS.

STRUCTURES TABLE							
STRUCTURE	TYPE	LID ELEV (m)	INVERT IN (m) and DIA (mm)	INVERT OUT (m) and DIA (mm)	SIZE	STRUCTURE	FRAME & COVER
STMMH100	STORM	73.39	70.59 (825)	70.40 (600)	2400mm	OPSD 701.013	OPSD 401.016A
STMMH101	STORM	74.44	70.62 (800)	68.76 (750)	1800mm	OPSD 701.012	OPSD 401.016A
STMMH102	STORM	68.95	67.87 (900)	67.82 (900)	1800mm	OPSD 701.012	OPSD 401.016A
STMMH103	STORM	69.74	67.87 (900)	67.42 (1050)	1800mm	OPSD 701.012	OPSD 401.016A
STMMH104	STORM	74.40	72.40 (200)	72.37 (200)	1200mm	OPSD 701.011	OPSD 401.016A
STMMH105	STORM	74.69	72.52 (200)	71.99 (200)	1200mm	OPSD 701.011	OPSD 401.016A
STMMH106	STORM	69.55	67.87 (200)	67.84 (200)	1200mm	OPSD 701.011	OPSD 401.016A
STMMH107	STORM	69.72	67.81 (200)	67.78 (200)	1200mm	OPSD 701.011	OPSD 401.016A
SANMH200	SANITARY	69.44	65.60 (250)	65.28 (825)	1200mm	OPSD 701.011	OPSD 401.016A
SANMH201	SANITARY	70.02	66.12 (250)	66.09 (250)	1200mm	OPSD 701.011	OPSD 401.016A
SANMH202	SANITARY	74.30	71.76 (200)	71.73 (200)	1200mm	OPSD 701.011	OPSD 401.016A
SANMH203	SANITARY	74.06	71.82 (200)	71.49 (200)	1200mm	OPSD 701.011	OPSD 401.016A
SANMH204	SANITARY	69.58	66.02 (200)	65.99 (200)	1200mm	OPSD 701.011	OPSD 401.016A
SANMH205	SANITARY	69.71	65.96 (200)	65.93 (200)	1200mm	OPSD 701.011	OPSD 401.016A
CBMH300	STORM	69.21	68.50 (200)	68.70 (200)	800x1450mm	OPSD 705.02	2x OPSD 400.02
CBMH301	STORM	69.27	68.58 (200)	68.75 (200)	800x1450mm	OPSD 705.02	2x S22
CB302	STORM	72.88	69.09 (200)	69.06 (200)	600x600mm	OPSD 705.01	OPSD 400.02
CB303	STORM	72.88	69.09 (200)	69.06 (200)	600x600mm	OPSD 705.01	OPSD 400.02
CB304	STORM	70.76	69.36 (200)	69.33 (200)	600x600mm	OPSD 705.01	OPSD 400.02
CB305	STORM	70.76	69.36 (200)	69.33 (200)	600x600mm	OPSD 705.01	OPSD 400.02
CB306	STORM	69.71	68.75 (200)	68.72 (200)	600x600mm	OPSD 705.01	OPSD 400.02
CB307	STORM	69.85	68.45 (200)	68.42 (200)	600x600mm	OPSD 705.01	OPSD 400.02
CB308	STORM	69.57	67.85 (200)	67.77 (250)	600x600mm	OPSD 705.01	OPSD 400.02
CB309	STORM	73.62	72.15 (250)	72.12 (250)	600x600mm	OPSD 705.01	OPSD 400.02
CB310	STORM	69.70	68.36 (250)	68.33 (250)	600x600mm	OPSD 705.01	OPSD 400.02
CB1	STORM	69.60	68.33 (250)	300mm	S31	S31	S31
CB2	STORM	69.57	68.11 (250)	300mm	S31	S31	S31
CB3	STORM	69.60	67.90 (250)	300mm	S31	S31	S31
CB4	STORM	72.67	70.67 (250)	300mm	S31	S31	S31
CB5	STORM	72.56	70.56 (250)	300mm	S31	S31	S31
CB6	STORM	72.65	70.65 (250)	300mm	S31	S31	S31
CB7	STORM	73.67	72.34 (250)	300mm	S31	S31	S31
CB8	STORM	69.94	69.22 (250)	300mm	S31	S31	S31
CB11	STORM	69.63	68.62 (250)	300mm	S30	S30	S30
CB12	STORM	69.19	68.76 (250)	300mm	S30	S30	S30
CB13	STORM	69.62	68.99 (250)	300mm	S30	S30	S30

LOCATION	SANITARY SEWER			STORM SEWER			WATERMAIN			CLEARANCES (mm)
	Invert Elev (mm)	Dia. (mm)	Obvert Elev (mm)	Invert Elev (mm)	Dia. (mm)	Obvert Elev (mm)	Invert Elev (mm)	Dia. (mm)	Obvert Elev (mm)	
1	65.27	250	65.82	67.74	900	68.84	67.10	406	267.51	230mm
2	65.27	250	65.82	67.78	900	68.86	67.05	300	267.35	190mm
3	65.27	250	65.82	67.78	900	68.86	67.05	300	267.35	230mm
4	65.78	250	66.03	67.71	900	68.61				160mm
5	65.80	250	66.05	67.71	900	68.61				160mm
6	65.81	250	66.06	67.72	900	68.62				160mm
7	65.84	250	66.09			66.60	300	66.90		510mm
8	69.14	250	69.39	67.73	900	68.83	66.60	300	66.90	830mm
9	69.14	250	69.39			71.25	300	71.55		180mm
10	69.41	250	69.66	69.41	900	70.31	71.25	300	71.55	940mm
11	71.35	250	71.60	69.43	900	70.33				500mm
12	69.42	250	69.67	71.50	300	71.80				180mm
13	68.73	250	68.98	70.21	900	71.11				120mm
14	68.73	250	68.98	68.73	900	69.63	71.61	300	71.91	190mm

STORMWATER MANAGEMENT SUMMARY TABLE							
Control Location	Post-Dev Area No.	Max Flow in Usec	Max Head (m)	Type	Model	Number of Drains	Weir Position
ROOFS	S12 (TOWER 1)	1.89 per drain (30 gpm)	0.15	Flow Controlled Roof Drain	WATTS ACUTROL	10	OPEN
	S04 (TOWER 2)	1.89 per drain (30 gpm)	0.15	Flow Controlled Roof Drain	WATTS ACUTROL	12	OPEN
	S13 (TOWER 3)	1.89 per drain (30 gpm)	0.15	Flow Controlled Roof Drain	WATTS ACUTROL	11	OPEN
	S07 (TOWER 4)	1.89 per drain (30 gpm)	0.15	Flow Controlled Roof Drain	WATTS ACUTROL	14	OPEN
CB302, CB303	S05	5.92	1.40	Inlet Control Device	IPEX LMF-75	N/A	N/A
CB 309	S06	2.5	1.20	Inlet Control Device	IPEX LMF-50	N/A	N/A
CB304, CB305	S11	4.83	1.40	Inlet Control Device	IPEX LMF-80	N/A	N/A
CB300, CB301	S14	16.2	0.80	Inlet Control Device	IPEX TYPE A	N/A	N/A
CISTERN 1 (NORTH)	S01,S02,S03,S09	40	N/A	Pumped to Storm Lateral		N/A	N/A
CISTERN 2 (SOUTH)	S08, S10, S15, S16	60	N/A	Pumped to Storm Lateral		N/A	N/A

REV	REVISION DESCRIPTION	DATE	BY	APPD
4	ISSUED FOR APPROVAL	03/10/23	AC	BMT
3	REVISED PER CITY COMMENTS	31/08/23	SAB	BMT
2	ISSUED FOR SPA	16/08/21	AE	BMT
1	ISSUED FOR COORDINATION	09/07/21	AE	BMT

SCALE	DESIGNED BY	REVIEWED BY	CLIENT
1:400			11421247 CANADA INC. 100-768 ST. JOSEPH BOULEVARD GATINEAU, QC. J8Y 4B8
			exp. Services Inc. 1-813-688-1899 1-613-225-7330 3055 Carleton Place, Unit 100 Ottawa, ON K2B 8H6 Canada www.exp.com
			ST. LAURENT BOULEVARD DEVELOPMENT 1740-1760 ST. LAURENT BLVD., OTTAWA, ON
			SITE SERVICING PLAN
			PROJECT NO. OTT-260579-B0 SURVEY ACV DATE OCT 2020 DRAWING NO. C100

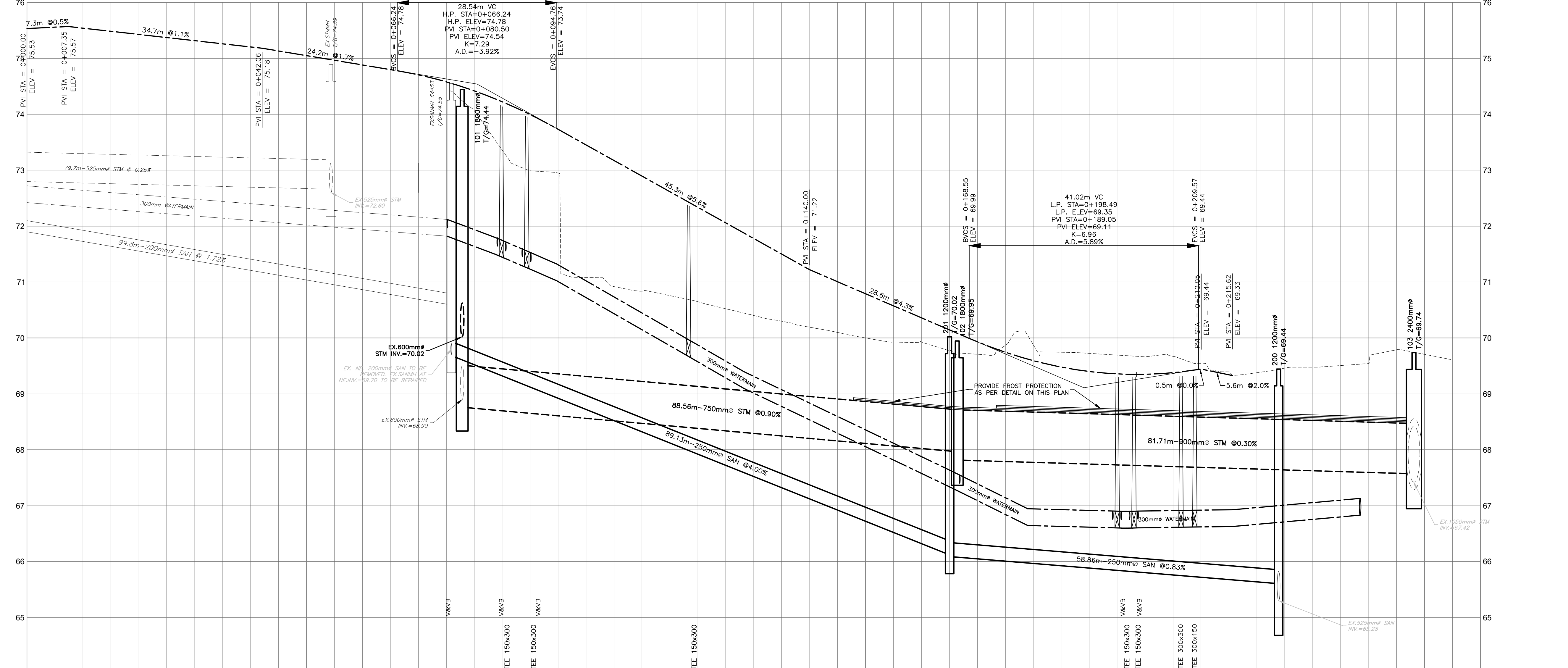
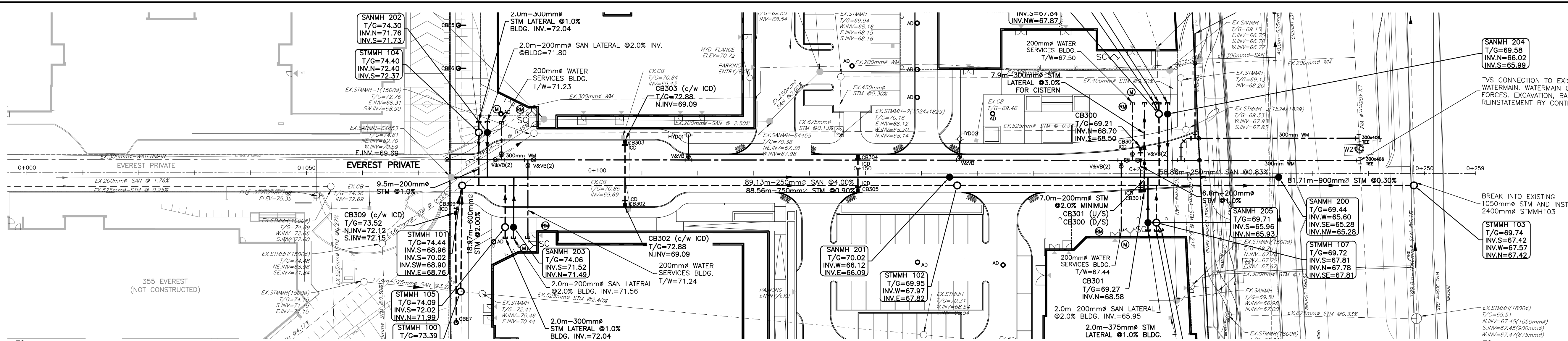
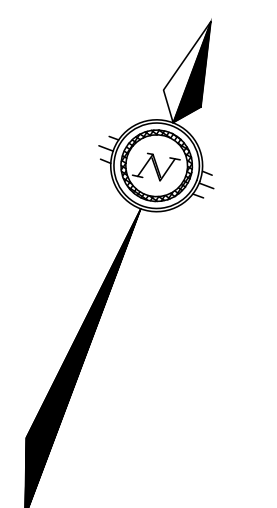
NOTE
REFER TO SERVICING AND SWM REPORT FOR THE ROOF DRAINAGE PLAN

CAUTION
THE POSITION OF ALL POLE LINES, CONDUITS, WATERMANS, SEWERS AND OTHER UNDERGROUND AND OVERGROUND UTILITIES AND STRUCTURES IS NOT NECESSARILY SHOWN ON THE CONTRACT DRAWINGS, AND WHERE SHOWN, THE ACCURACY OF THE POSITION OF SUCH UTILITIES AND STRUCTURES IS NOT GUARANTEED. BEFORE STARTING WORK, DETERMINE THE EXACT LOCATION OF ALL SUCH UTILITIES AND STRUCTURES AND ASSUME ALL LIABILITY FOR DAMAGE TO THEM.

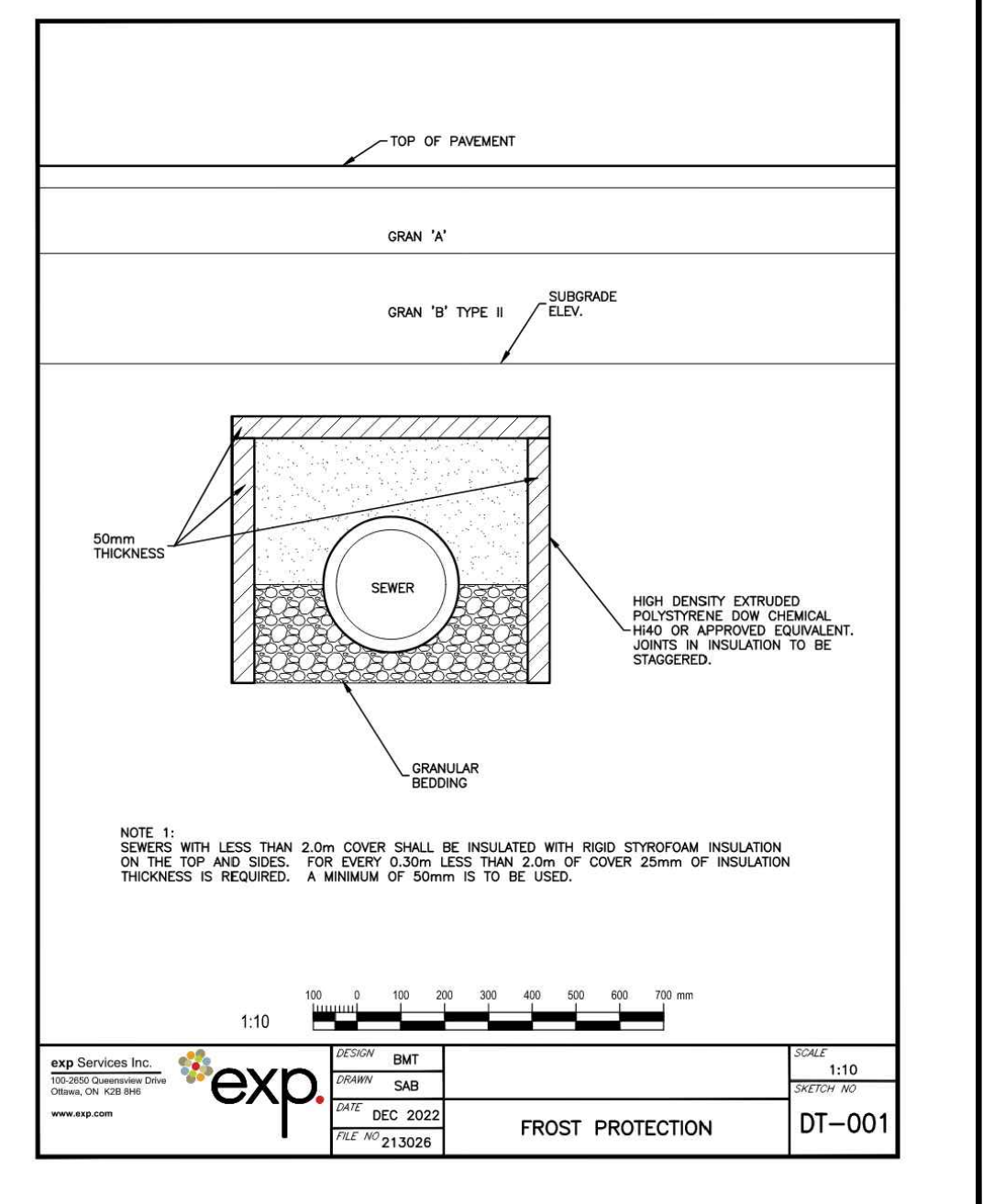
KEY PLAN
SITE LOCATION

BASE PLAN SK
DESIGN JLF/JD
CHECKED BMT
DRAWN SAB
PROJECT MANAGER BMT
APPROVED BMT

• BUILDINGS • EARTH & ENVIRONMENT • ENERGY • INDUSTRIAL • INFRASTRUCTURE • SUSTAINABILITY •



STATION	ELEVATIONS PROPOSED EXISTING	TOP OF WATERMAIN ELEVATION	STORM SEWER INVERTS	SANITARY SEWER INVERTS	CHAINAGE
0+000	75.52				0+000
0+025	75.56				0+025
0+050	75.54				0+050
0+054	75.48				0+054
0+077.8	75.43				0+077.8
0+084.9	75.37				0+084.9
0+086.6	75.32				0+086.6
0+100	75.28				0+100
0+118.3	75.20				0+118.3
0+125	75.13				0+125
0+150	75.05				0+150
0+165	74.97				0+165
0+175	74.88				0+175
0+197.8	74.80				0+197.8
0+200	74.71				0+200
0+204.4	74.58				0+204.4
0+208.9	74.42				0+208.9
0+248.1	74.22				0+248.1
0+250	74.00				0+250
0+260	73.73				0+260



CAUTION
THE POSITION OF ALL POLE LINES, CONDUITS, WATERMANS, SEWERS AND OTHER UNDERGROUND AND OVERGROUND UTILITIES AND STRUCTURES IS NOT NECESSARILY SHOWN ON THE CONTRACT DRAWINGS, AND WHERE SHOWN, THE ACCURACY OF THE POSITION OF SUCH UTILITIES AND STRUCTURES IS NOT GUARANTEED. BEFORE STARTING WORK, DETERMINE THE EXACT LOCATION OF ALL SUCH UTILITIES AND STRUCTURES AND ASSUME ALL LIABILITY FOR DAMAGE TO THEM.

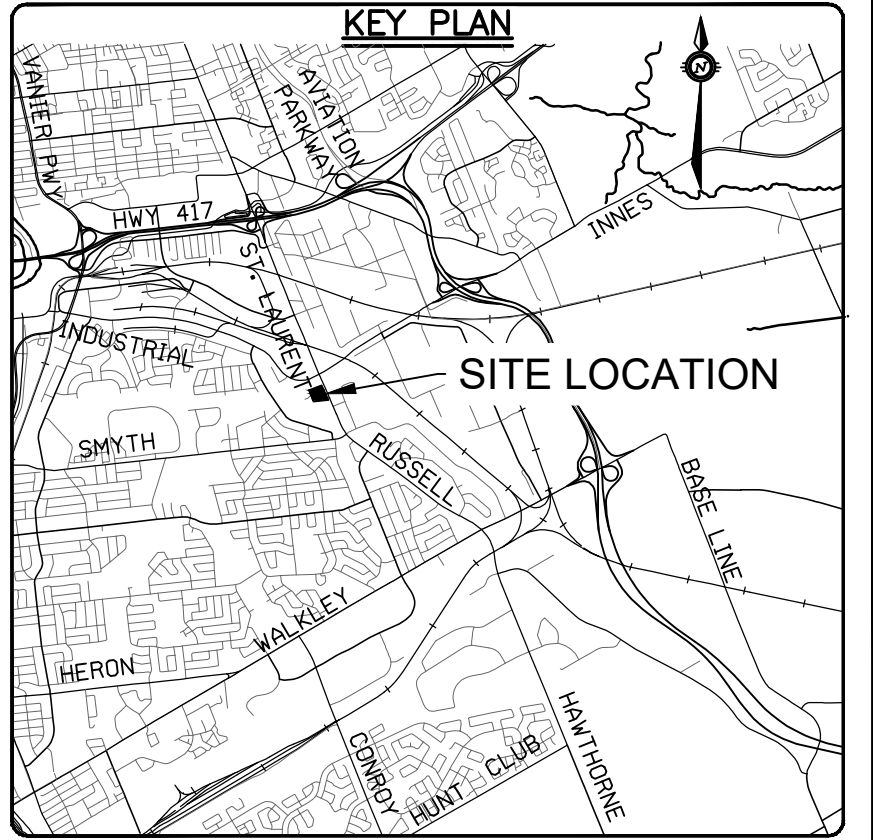
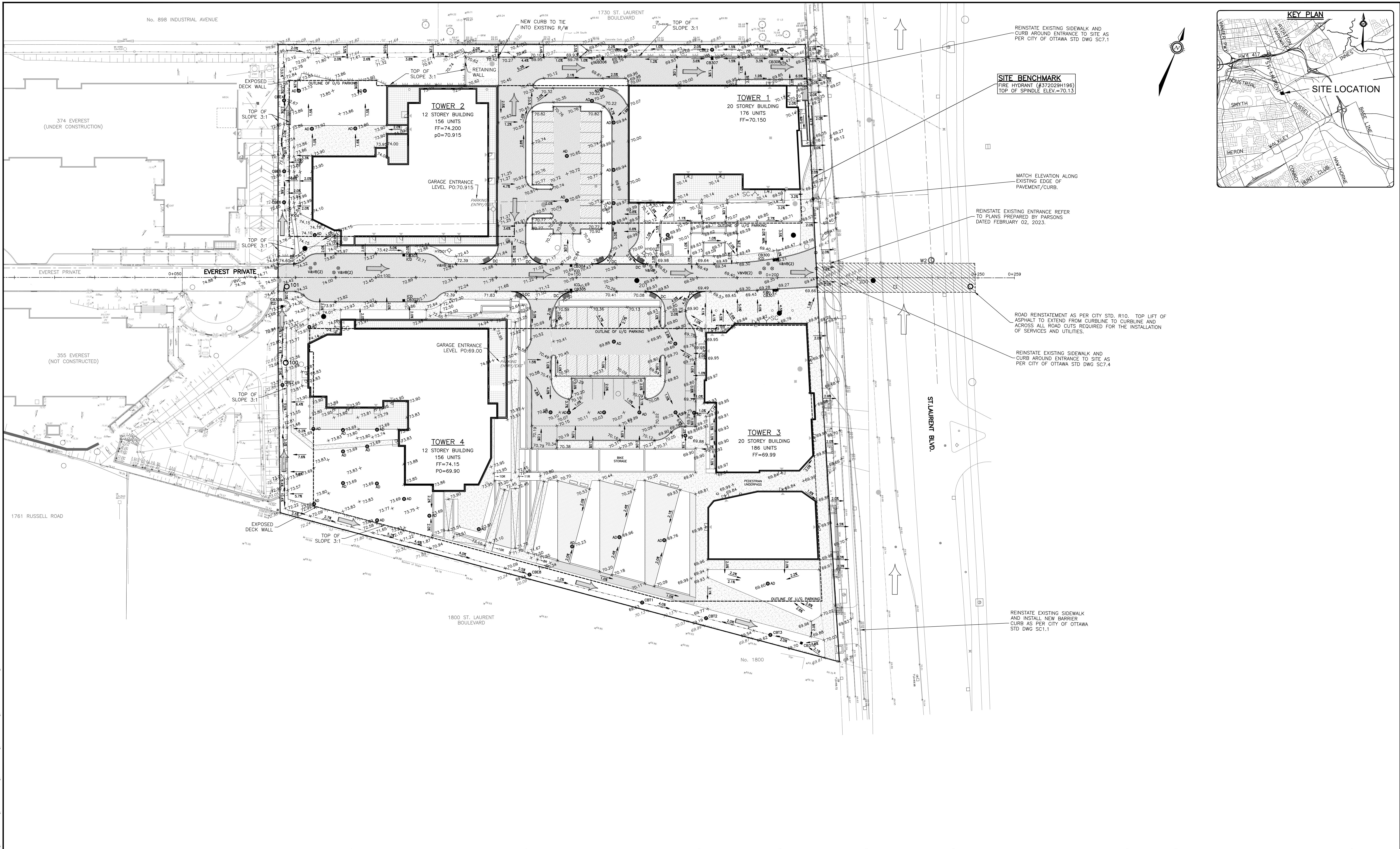
REV	REVISION DESCRIPTION	DATE	BY	APPRO
3	ISSUED FOR APPROVAL	03/10/23	AC	BMT
4	REVISED PER CITY COMMENTS	31/08/23	SAB	BMT
2	ISSUED FOR SPA	16/08/21	AE	BMT
1	ISSUED FOR COORDINATION	09/07/21	AE	BMT

DESIGNED BY	REVIEWED BY	CLIENT
SK	JL/JD	11421247 CANADA INC. 100-768 ST. JOSEPH BOULEVARD GATINEAU, QC. J8Y 4B8

PROJECT	DATE	TITLE
ST. LAURENT BOULEVARD DEVELOPMENT 1740-1760 ST. LAURENT BLVD., OTTAWA, ON	OCT 2020	EVEREST PRIVATE PLAN AND PROFILE

PROJECT NO.	SURVEY	DATE
OTT-260579-B0	ACV	OCT 2020

PROJECT NO.	SURVEY	DATE
OTT-260579-B0	ACV	OCT 2020



CAUTION
 THE POSITION OF ALL POLE LINES, CONDUITS, WATERMAINS, SEWERS AND OTHER UNDERGROUND AND OVERGROUND UTILITIES AND STRUCTURES IS NOT NECESSARILY SHOWN ON THE CONTRACT DRAWINGS, AND WHERE SHOWN, THE ACCURACY OF THE POSITION OF SUCH UTILITIES AND STRUCTURES IS NOT GUARANTEED. BEFORE STARTING WORK, DETERMINE THE EXACT LOCATION OF ALL SUCH UTILITIES AND STRUCTURES AND ASSUME ALL LIABILITY FOR DAMAGE TO THEM.

REV	REVISION DESCRIPTION	DATE	BY	APPD
4	ISSUED FOR APPROVAL	03/10/23	AC	BMT
3	REVISED PER CITY COMMENTS	31/08/23	SAB	BMT
2	ISSUED FOR SPA	16/08/21	AE	BMT
1	ISSUED FOR COORDINATION	09/07/21	AE	BMT

SCALE
 0 4m 8m 16m
 HORIZONTAL 1:400

DESIGNED BY
 REVIEWED BY

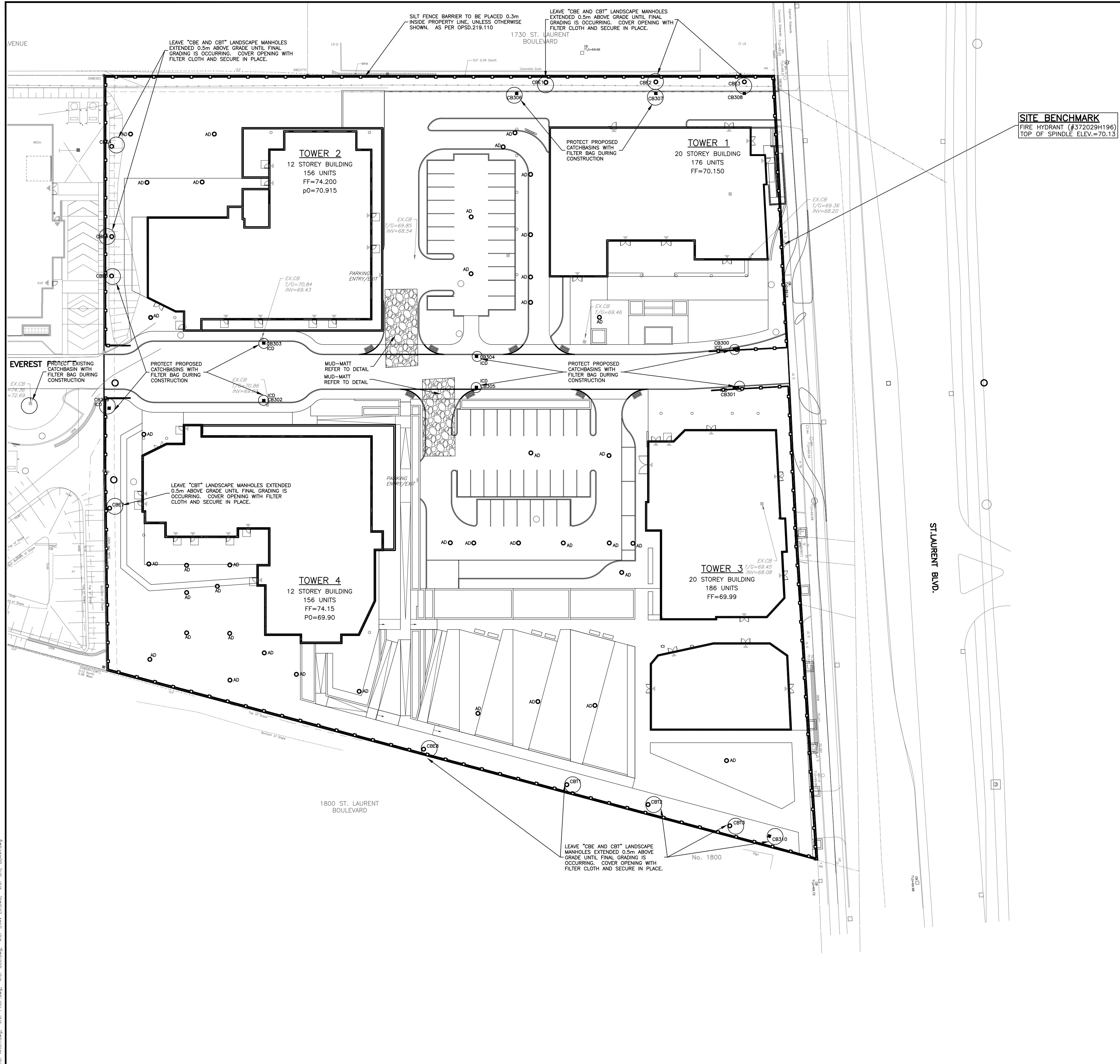
CLIENT
11421247 CANADA INC.
 100-768 ST. JOSEPH BOULEVARD
 GATINEAU, QC. J8Y 4B8

exp Services Inc.
 1-813-688-1899 | 1-613-225-7330
 1000 Carleton Place, Unit 100
 Ottawa, ON K2B 8R6
 Canada
 www.exp.com

• BUILDINGS • EARTH & ENVIRONMENT • ENERGY •
 • INDUSTRIAL • INFRASTRUCTURE • SUSTAINABILITY •

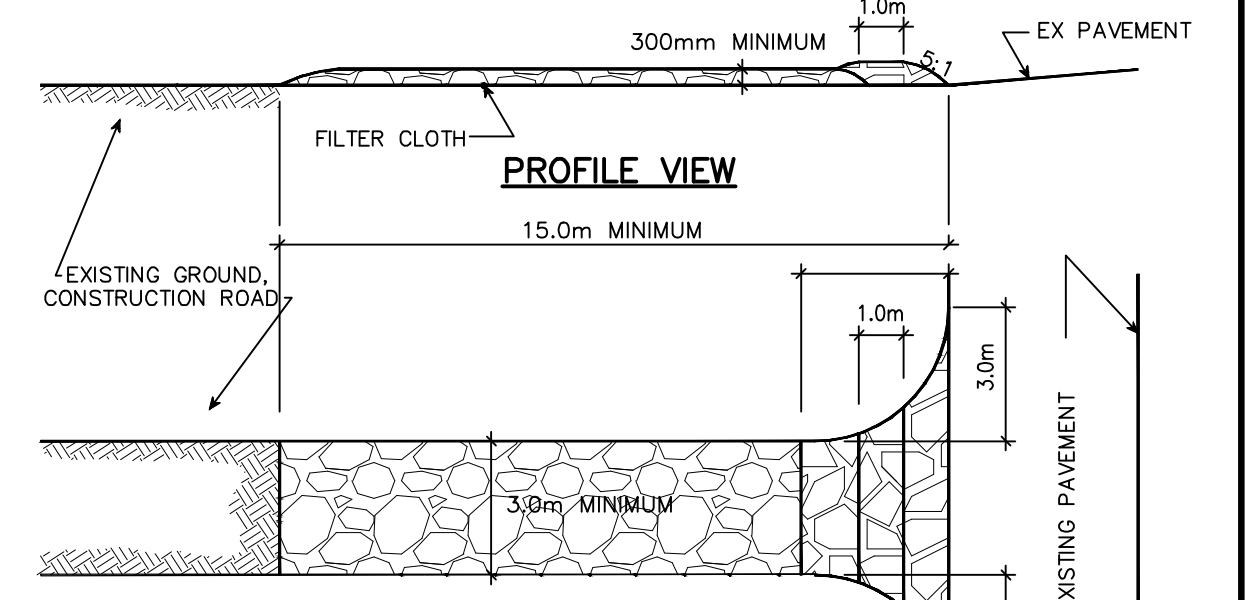
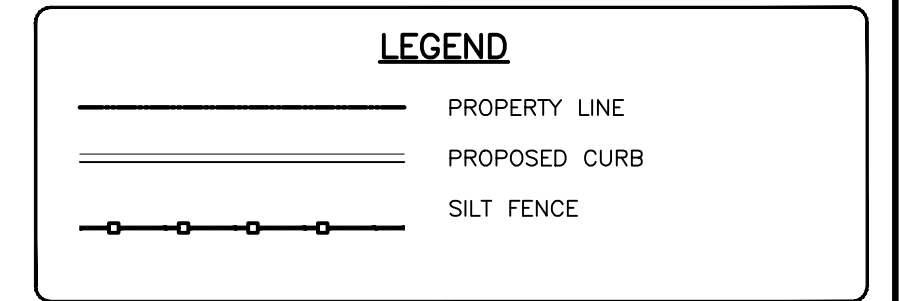
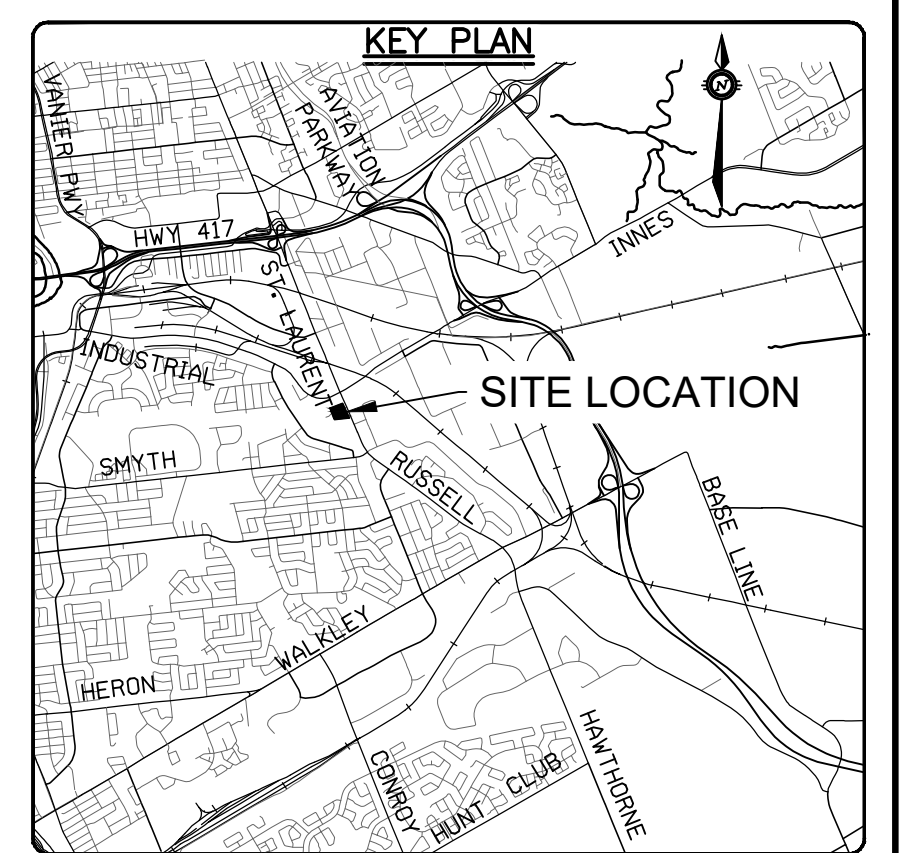
BASE PLAN	PROJECT	PROJECT NO.
SK	ST. LAURENT BOULEVARD DEVELOPMENT	OTT-260579-80
DESIGN	1740-1760 ST. LAURENT BLVD., OTTAWA, ON	SURVEY ACV
CHECKED	SITE GRADING PLAN	DATE OCT 2020
CAD		DRAWING NO. C200
PROJECT MANAGER		
BMT		
APPROVED		
BMT		

#18610

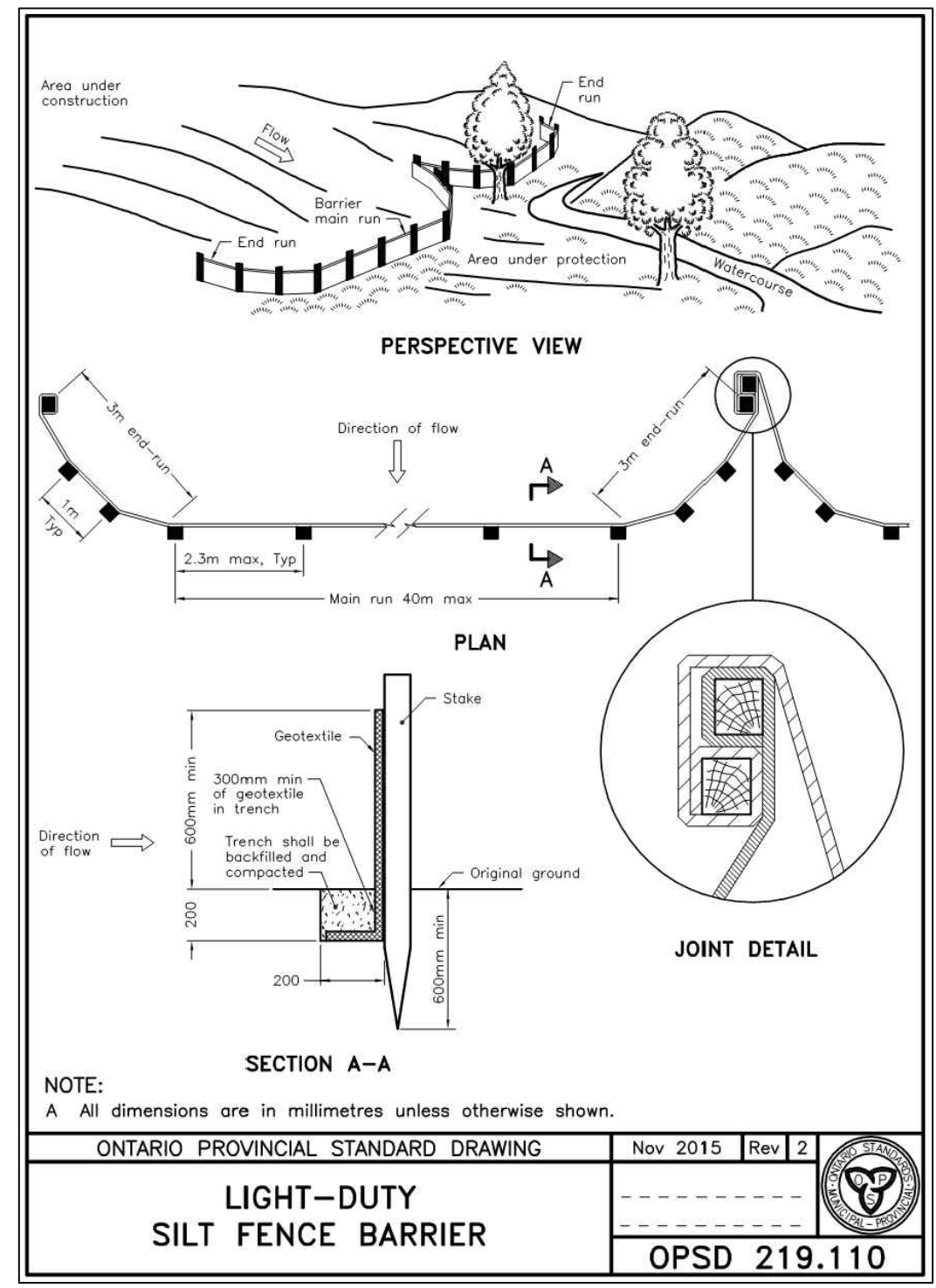


EROSION AND SEDIMENT CONTROLS DURING CONSTRUCTION.

- DURING ALL CONSTRUCTION ACTIVITIES, EROSION AND SEDIMENTATION SHALL BE CONTROLLED BY THE FOLLOWING TECHNIQUES:
1. LIMITING THE EXTENT OF EXPOSED SOILS AT ANY GIVEN TIME.
 2. RE-VEGETATION OF EXPOSED AREAS AS SOON AS POSSIBLE.
 3. MINIMIZING THE AREA TO BE CLEARED AND DISRUPTION TO ADJACENT AREAS.
 4. A SILT FENCE BARRIER (OPSD 219.110) TO BE INSTALLED AS SHOWN ON THIS DRAWING.
 5. A VISUAL INSPECTION SHALL BE COMPLETED DAILY ON SEDIMENT CONTROL BARRIERS AND ANY DAMAGE REPAIRED IMMEDIATELY. CARE WILL BE TAKEN TO PREVENT DAMAGE DURING CONSTRUCTION OPERATIONS.
 6. IN SOME CASES SOME BARRIERS MAY BE REMOVED TEMPORARILY TO ACCOMMODATE THE CONSTRUCTION OPERATIONS. THE AFFECTED BARRIERS WILL BE REINSTATED AT NIGHT WHEN CONSTRUCTION IS COMPLETED.
 7. THE SEDIMENT CONTROL DEVICES WILL BE CLEANED OF ACCUMULATED SILT AS REQUIRED. THE DEPOSITS WILL BE DISPOSED OF AS PER THE REQUIREMENTS OF THE CONTRACT.
 8. DURING THE COURSE OF CONSTRUCTION IF THE ENGINEER BELIEVES THAT ADDITIONAL PREVENTION METHODS ARE REQUIRED TO CONTROL EROSION AND SEDIMENTATION, THE CONTRACTOR WILL INSTALL ADDITIONAL SILT FENCES OR OTHER METHODS AS REQUIRED TO THE SATISFACTION OF THE ENGINEER.
 9. CONSTRUCTION AND MAINTENANCE REQUIREMENTS FOR EROSION AND SEDIMENT CONTROLS TO COMPLY WITH ONTARIO PROVINCIAL STANDARD SPECIFICATION (OPSS) OPSS 805, AND CITY OF OTTAWA SPECIFICATIONS.
 10. MUD MATT TO BE LOCATED AT THE CONSTRUCTION ENTRANCE, AS INDICATED ON THE PLAN, AND SHALL BE INSTALLED AS PER THE MUD MATT DETAIL TO PREVENT MUD TRACKING ON TO MUNICIPAL ROADS. THE ENTRANCE SHALL BE MAINTAINED IN CLEAN CONDITION THROUGHOUT THE CONSTRUCTION PERIOD.
 11. EROSION AND SEDIMENT CONTROL MEASURES MAY BE MODIFIED ON-SITE AT THE DISCRETION OF THE CITY OF OTTAWA INSPECTOR OR THE MISSISSIPPI VALLEY CONSERVATION AUTHORITY. CONTRACTOR IS RESPONSIBLE TO INSTALL MODIFICATIONS AS REQUIRED TO THE SATISFACTION OF THE APPROPRIATE AUTHORITIES.
 12. IN ACCORDANCE WITH BEST MANAGEMENT PRACTICES FOR EROSION AND SEDIMENT CONTROL, GEOSYNTHETIC SYSTEMS SILTSACK OR APPROVED EQUIVALENT IS TO BE PLACED INSIDE ALL STORM MANHOLE CATCHBASINS AND CATCHBASINS. INSTALLATION, INSPECTION AND CLEANOUT ARE AS PER MANUFACTURER'S RECOMMENDATIONS.

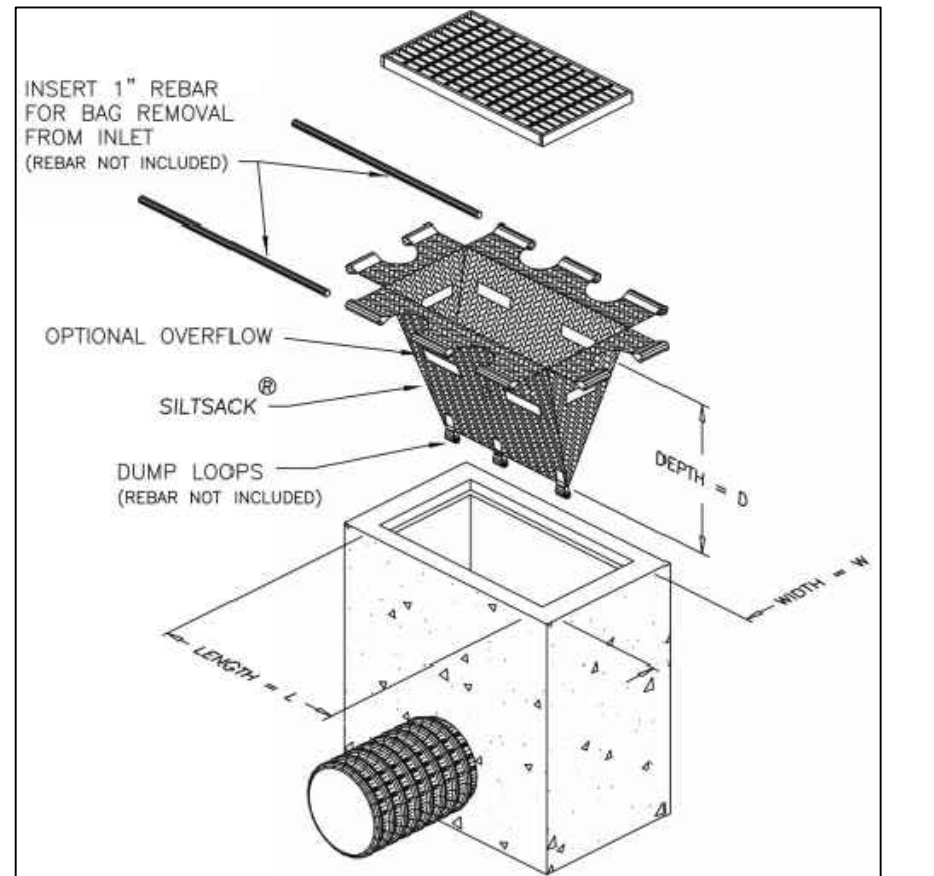


- NOTES:**
1. STONE - USE CLEAR CRUSHED 50mm STONE.
 2. LENGTH - AS REQUIRED BUT NOT LESS THAN 15.0m.
 3. THICKNESS - NOT LESS THAN 300mm.
 4. WIDTH - 3.0m MINIMUM, NOT LESS THAN THE WIDTH AT POINTS WHERE INGRESS OR EGRESS OCCURS.
 5. FILTER CLOTH - WILL BE PLACED OVER THE ENTIRE AREA PRIOR TO PLACING STONE.
 6. MAINTENANCE - THE ENTRANCE SHALL BE MAINTAINED IN A CONDITION WHICH WILL PREVENT TRACKING OR FLOWING OF SEDIMENT ONTO PUBLIC RIGHT-OF-WAY. THIS MAY REQUIRE PERIODIC TOP DRESSING WITH ADDITIONAL STONE AS CONDITIONS DEMAND AND REPAIR AND/OR CLEAN OUT OF ANY MEASURES USED TO TRAP SEDIMENT. ALL SEDIMENT SPILLED, DROPPED, WASHED OR TRACKED ONTO PUBLIC RIGHT-OF-WAY MUST BE REMOVED IMMEDIATELY.
 7. PERIODIC INSPECTION AND NEEDED MAINTENANCE SHALL BE PROVIDED AFTER EACH RAIN.



- NOTE:**
A All dimensions are in millimetres unless otherwise shown.
- ONTARIO PROVINCIAL STANDARD DRAWING Nov 2015 Rev | 2
- LIGHT-DUTY SILT FENCE BARRIER**
- OPSD 219.110
- NOTES:**
1. WOVEN WIRE FENCE TO BE FASTENED SECURELY TO WOOD POSTS WITH WIRE TIES OR STAPLES.
 2. POSTS TO BE SPACED AT 2.3 METRES CENTRE TO CENTRE.
 3. WHEN TWO SECTIONS OF FILTER CLOTH ADJOIN EACH OTHER THEY SHALL BE OVERLAPPED BY A MINIMUM OF 500mm.
 4. MAINTENANCE SHALL BE PERFORMED AS NEEDED AND MATERIAL REMOVED WHEN "BULGES" DEVELOP IN THE SILT FENCE.
 5. WOOD POSTS TO BE HARDWOOD TYPE (50mm x 50mm).
 6. GEOTEXTILE TO BE EMBEDDED 200mm INTO GROUND.
 7. GEOTEXTILE TO CONFORM TO OPSS 805 STANDARDS.
 8. SILT FENCE MUST BE INSTALLED BEFORE COMMENCEMENT OF CONSTRUCTION AND ACCORDANCE WITH DETAIL. SILT FENCE CAN BE REMOVED AFTER LANDSCAPING IS COMPLETE.
 9. SEDIMENTS MUST BE CLEARED AWAY WHEN THEY REACH HALF THE HEIGHT OF THE FENCE.

MUD MAT DETAIL
N.T.S



FILTER BAG DETAIL
N.T.S

CAUTION
THE POSITION OF ALL POLE LINES, CONDUITS, WATERMANS, SEWERS AND OTHER UNDERGROUND AND OVERGROUND UTILITIES AND STRUCTURES IS NOT NECESSARILY SHOWN ON THE CONTRACT DRAWINGS, AND WHERE SHOWN, THE ACCURACY OF THE POSITION OF SUCH UTILITIES AND STRUCTURES IS NOT GUARANTEED. BEFORE STARTING WORK, DETERMINE THE EXACT LOCATION OF ALL SUCH UTILITIES AND STRUCTURES AND ASSUME ALL LIABILITY FOR DAMAGE TO THEM.

REV	REVISION DESCRIPTION	DATE	BY	APPD
4	ISSUED FOR APPROVAL	03/10/23	AC	BMT
3	REVISED PER CITY COMMENTS	31/08/23	SAB	BMT
2	ISSUED FOR SPA	16/08/21	AE	BMT
1	ISSUED FOR COORDINATION	09/07/21	AE	BMT

SCALE
HORIZONTAL 1:400

DESIGNED BY
REVIEWED BY
CLIENT
11421247 CANADA INC.
100-768 ST. JOSEPH BOULEVARD
GATINEAU, QC J8Y 4B8

BASEPLAN SK
DESIGN JLF/JD
CHECKED BMT
CAD SAB
PROJECT MANAGER BMT
APPROVED BMT

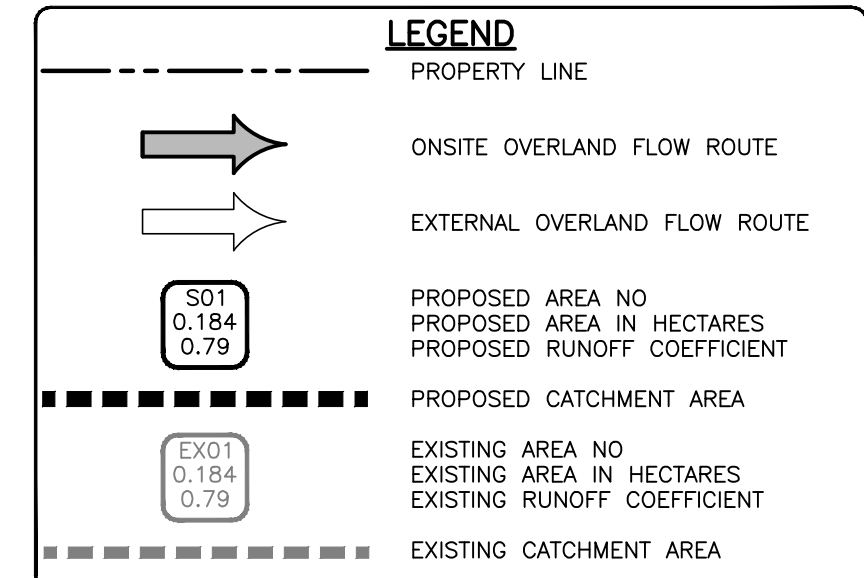
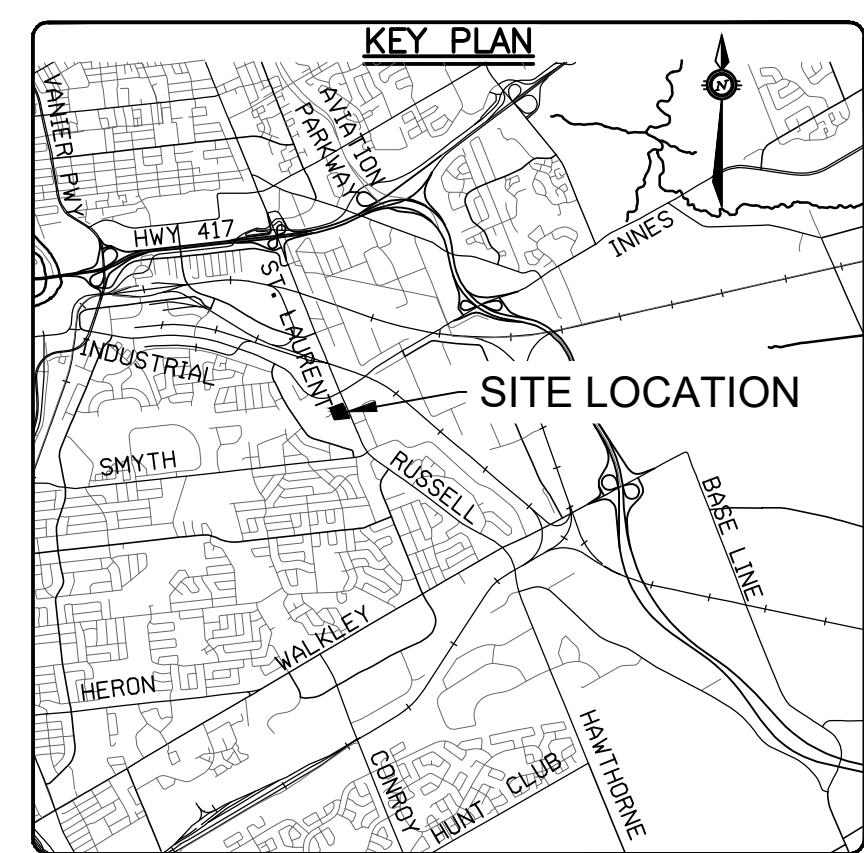
PROJECT
ST. LAURENT BOULEVARD DEVELOPMENT
1740-1760 ST. LAURENT BLVD., OTTAWA, ON

DATE OCT 2020
DRAWING No. **C300**

EROSION AND SEDIMENT CONTROL PLAN

PROJECT No. OTT-260579-B0
SURVEY ACV
DATE OCT 2020
DRAWING No. C300

File name: \\s1\h1\104-00000231-wp040_mechanical.dwg
 User: s104000231
 Date: 2023/07/20 11:53 AM
 Plot: 2023/07/20 11:53 AM
 Plotter: HP DesignJet 5000 Series
 Plot style: HP-Plotter.ctb
 Scale: 1:400
 Sheet: 1 of 1
 Title: ST. LAURENT BOULEVARD DEVELOPMENT - EROSION AND SEDIMENT CONTROL PLAN
 Author: JLF
 Date: 2023/07/20 11:53 AM
 Description: ST. LAURENT BOULEVARD DEVELOPMENT - EROSION AND SEDIMENT CONTROL PLAN
 Project: ST. LAURENT BOULEVARD DEVELOPMENT
 Drawing: ST. LAURENT BOULEVARD DEVELOPMENT - EROSION AND SEDIMENT CONTROL PLAN
 Sheet: 1 of 1



NOTES:
 • REFER TO SERVICING AND SWM REPORT FOR THE ROOF DRAINAGE PLAN

File Name: \\s1\p1\2020\2020-21\11421247 CANADA INC. 100-768 ST. JOSEPH BOULEVARD GATINEAU QC J8Y 4B8.dwg
 User: s1\jld\jld Last Printed: 10/27/2020 3:35:59 PM Plotted by: Colek
 Reference: \\s1\p1\2020\2020-21\11421247 CANADA INC. 100-768 ST. JOSEPH BOULEVARD GATINEAU QC J8Y 4B8.dwg
 Reference: \\s1\p1\2020\2020-21\11421247 CANADA INC. 100-768 ST. JOSEPH BOULEVARD GATINEAU QC J8Y 4B8.dwg

CAUTION
 THE POSITION OF ALL POLE LINES, CONDUITS, WATERMANS, SEWERS AND OTHER UNDERGROUND AND OVERGROUND UTILITIES AND STRUCTURES IS NOT NECESSARILY SHOWN ON THE CONTRACT DRAWINGS, AND WHERE SHOWN, THE ACCURACY OF THE POSITION OF SUCH UTILITIES AND STRUCTURES IS NOT GUARANTEED. BEFORE STARTING WORK, DETERMINE THE EXACT LOCATION OF ALL SUCH UTILITIES AND STRUCTURES AND ASSUME ALL LIABILITY FOR DAMAGE TO THEM.

REV	REVISION DESCRIPTION	DATE	BY	APPD
4	ISSUED FOR APPROVAL	03/10/23	AC	BMT
3	REVISED PER CITY COMMENTS	31/08/23	SAB	BMT
2	ISSUED FOR SPA	16/08/21	AE	BMT
1	ISSUED FOR COORDINATION	09/07/21	AE	BMT

REV	REVISION DESCRIPTION	DATE	BY	APPD
4	ISSUED FOR APPROVAL	03/10/23	AC	BMT
3	REVISED PER CITY COMMENTS	31/08/23	SAB	BMT
2	ISSUED FOR SPA	16/08/21	AE	BMT
1	ISSUED FOR COORDINATION	09/07/21	AE	BMT

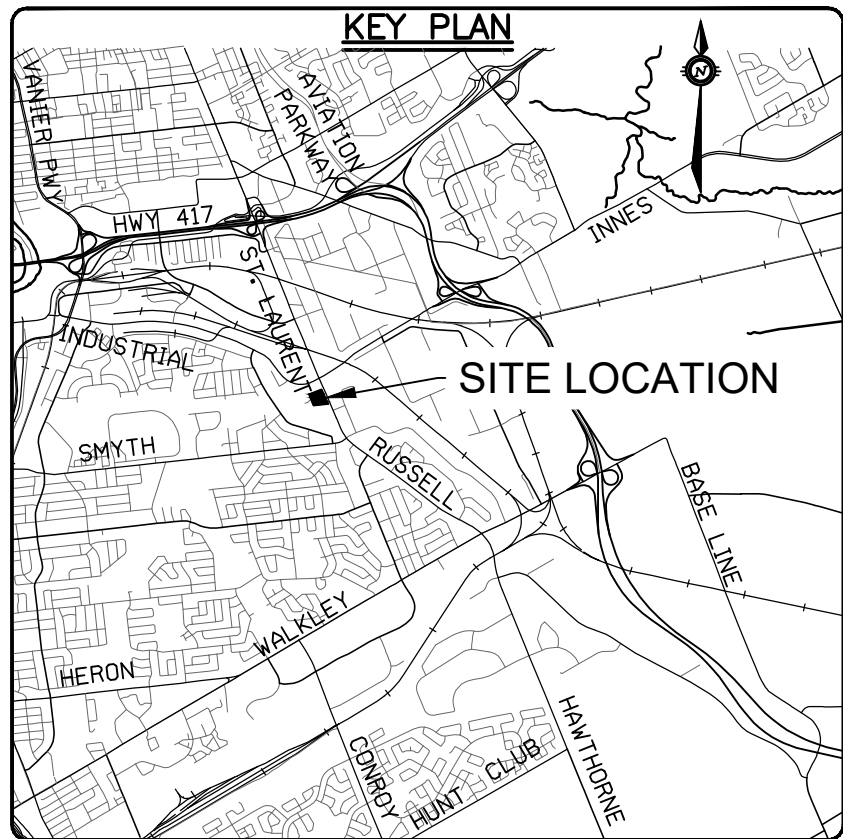
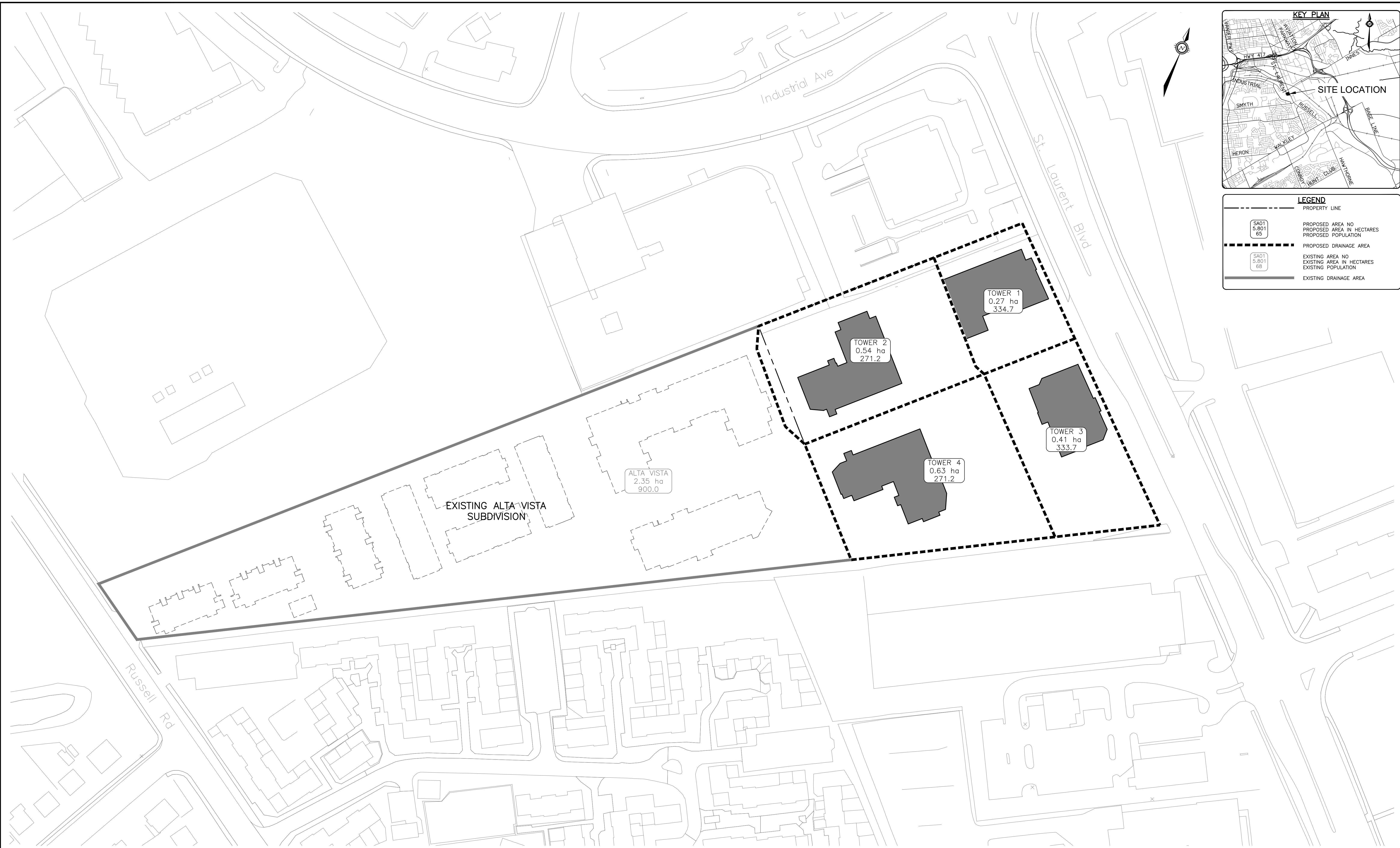
SCALE
 0 5m 10m 30m
 HORIZONTAL 1:750
 NORTH

DESIGNED BY
 REVIEWED BY

CLIENT
11421247 CANADA INC.
 100-768 ST. JOSEPH BOULEVARD
 GATINEAU, QC. J8Y 4B8

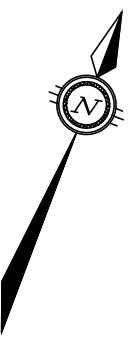
exp Services Inc.
 1-877-668-1899 | 1-613-225-7330
 3025 Deschênes Drive, Unit 100
 Ottawa, ON K2B 8H6
 Canada
 www.exp.com
 • BUILDINGS • EARTH & ENVIRONMENT • ENERGY •
 • INDUSTRIAL • INFRASTRUCTURE • SUSTAINABILITY •

PROJECT No.	PROJECT	PROJECT No.
OTT-260579-B0	ST. LAURENT BOULEVARD DEVELOPMENT	OTT-260579-B0
DATE	1740-1760 ST. LAURENT BLVD., OTTAWA, ON	DATE
OCT 2020		OCT 2020
DRAWING No.	POST DEVELOPMENT STORM DRAINAGE AREA PLAN	DRAWING No.
C400		C400



LEGEND

	PROPERTY LINE
	PROPOSED AREA NO. PROPOSED AREA IN HECTARES PROPOSED POPULATION
	PROPOSED DRAINAGE AREA
	EXISTING AREA NO. EXISTING AREA IN HECTARES EXISTING POPULATION
	EXISTING DRAINAGE AREA

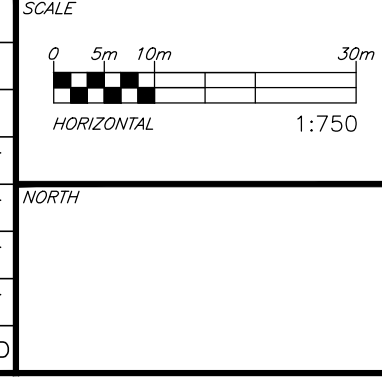


File Name: \\192.168.1.100\planning\2023\07\2023_07_23_15:00 AM - Last Printed: 07/23/2023 3:33:04 PM Printed by: colak
 Reference: www.tloca.com; Drawings: 07-2023-07-23-15:00 AM - Last Printed: 07/23/2023 3:33:04 PM Printed by: colak

CAUTION
 THE POSITION OF ALL POLE LINES, CONDUITS, WATERMANS, SEWERS AND OTHER UNDERGROUND AND OVERGROUND UTILITIES AND STRUCTURES IS NOT NECESSARILY SHOWN ON THE CONTRACT DRAWINGS, AND WHERE SHOWN, THE ACCURACY OF THE POSITION OF SUCH UTILITIES AND STRUCTURES IS NOT GUARANTEED. BEFORE STARTING WORK, DETERMINE THE EXACT LOCATION OF ALL SUCH UTILITIES AND STRUCTURES AND ASSUME ALL LIABILITY FOR DAMAGE TO THEM.

REV	REVISION DESCRIPTION	DATE	BY	APPD
4	ISSUED FOR APPROVAL	03/10/23	AC	BMT
3	REVISED PER CITY COMMENTS	31/08/23	SAB	BMT
2	ISSUED FOR SPA	16/08/21	AE	BMT
1	ISSUED FOR COORDINATION	09/07/21	AE	BMT

REV	REVISION DESCRIPTION	DATE	BY	APPD
4	ISSUED FOR APPROVAL	03/10/23	AC	BMT
3	REVISED PER CITY COMMENTS	31/08/23	SAB	BMT
2	ISSUED FOR SPA	16/08/21	AE	BMT
1	ISSUED FOR COORDINATION	09/07/21	AE	BMT



DESIGNED BY: [Blank]
 REVIEWED BY: [Blank]

CLIENT:
 11421247 CANADA INC.
 100-768 ST. JOSEPH BOULEVARD
 GATINEAU, QC. J8Y 4B8



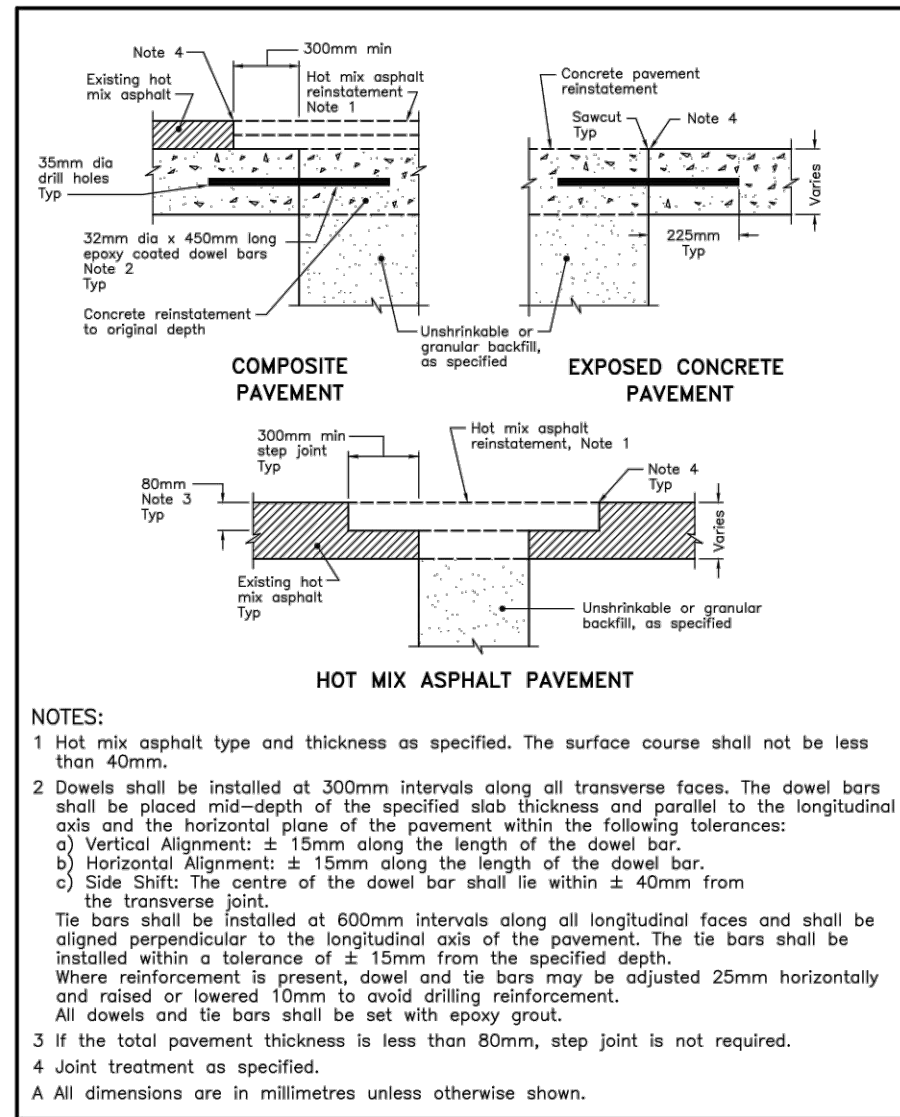
exp Services Inc.
 1-813-668-1899 | 1-613-225-7330
 2025, 2024, 2023, 2022, 2021, 2020
 Ottawa, ON K2B 8H6
 Canada
 www.exp.com

BASEPLAN	SK
DESIGN	JLF/JD
CHECKED	BMT
CAD	SAB
PROJECT MANAGER	BMT
APPROVED	BMT

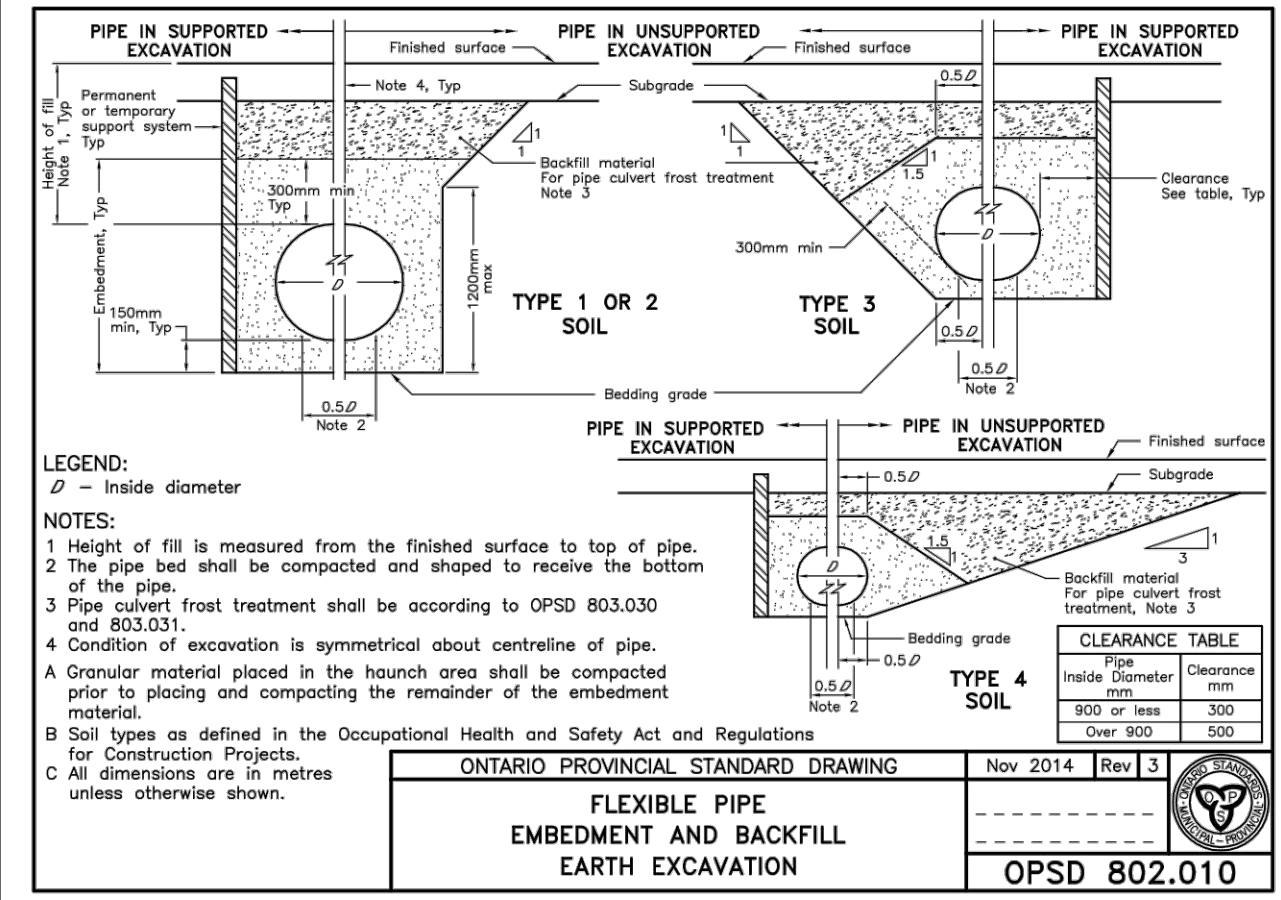
PROJECT:
ST. LAURENT BOULEVARD DEVELOPMENT
 1740-1760 ST. LAURENT BLVD., OTTAWA, ON

TITLE:
SANITARY DRAINAGE AREA PLAN

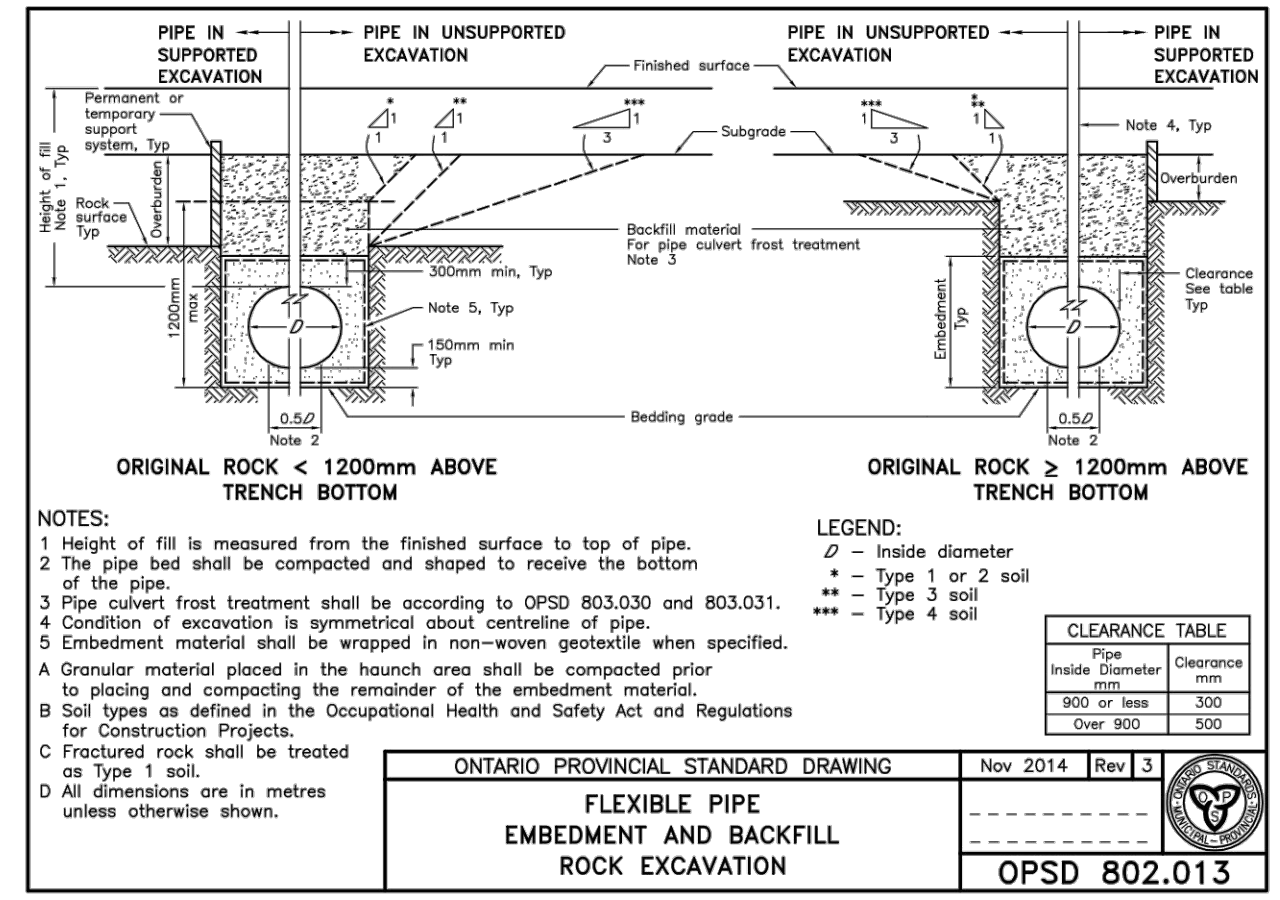
PROJECT No.	OTT-260579-B0
SURVEY	AGV
DATE	OCT 2020
DRAWING No.	C500



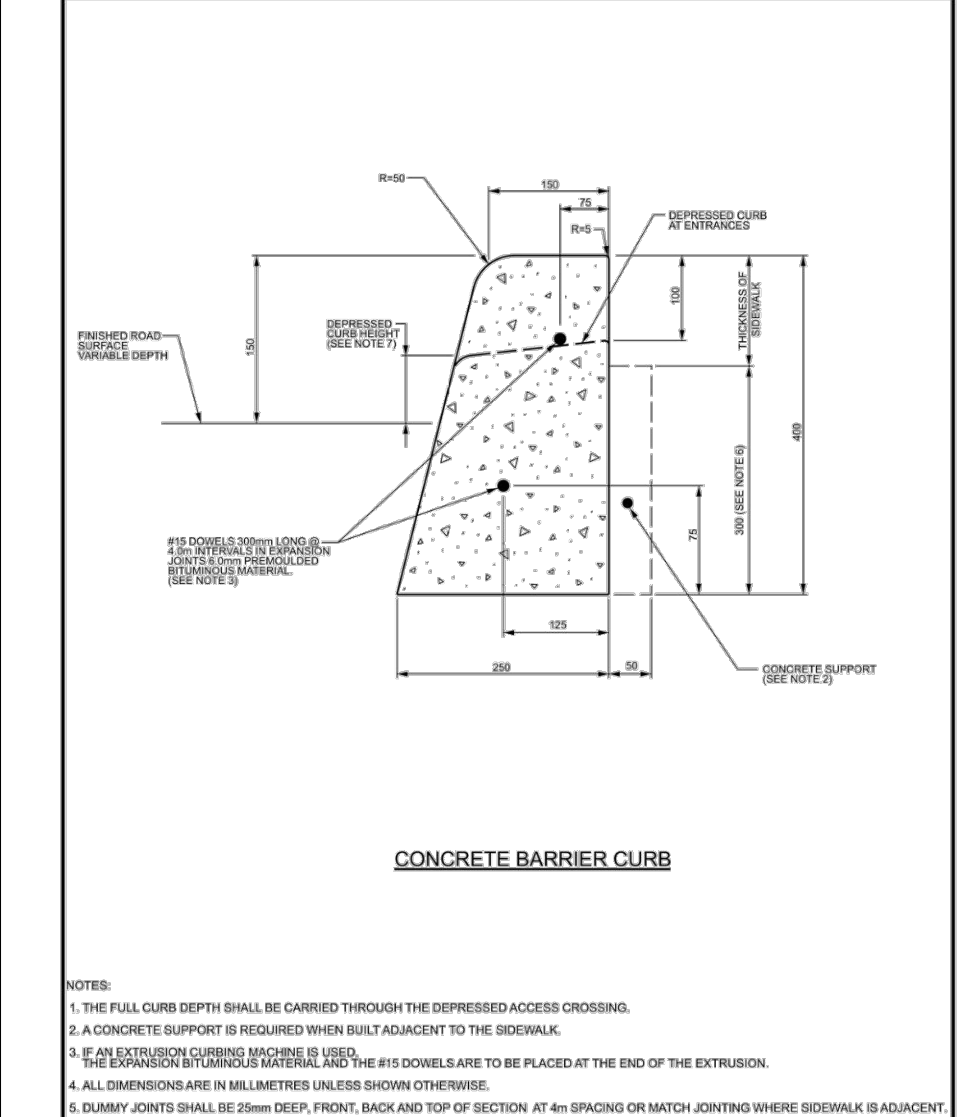
ONTARIO PROVINCIAL STANDARD DRAWING
PAVEMENT REINSTATEMENT FOR UTILITY CUTS
 DATE: NOV 2020
 REV: 3
 DESG. NO.: OPSD 509.010



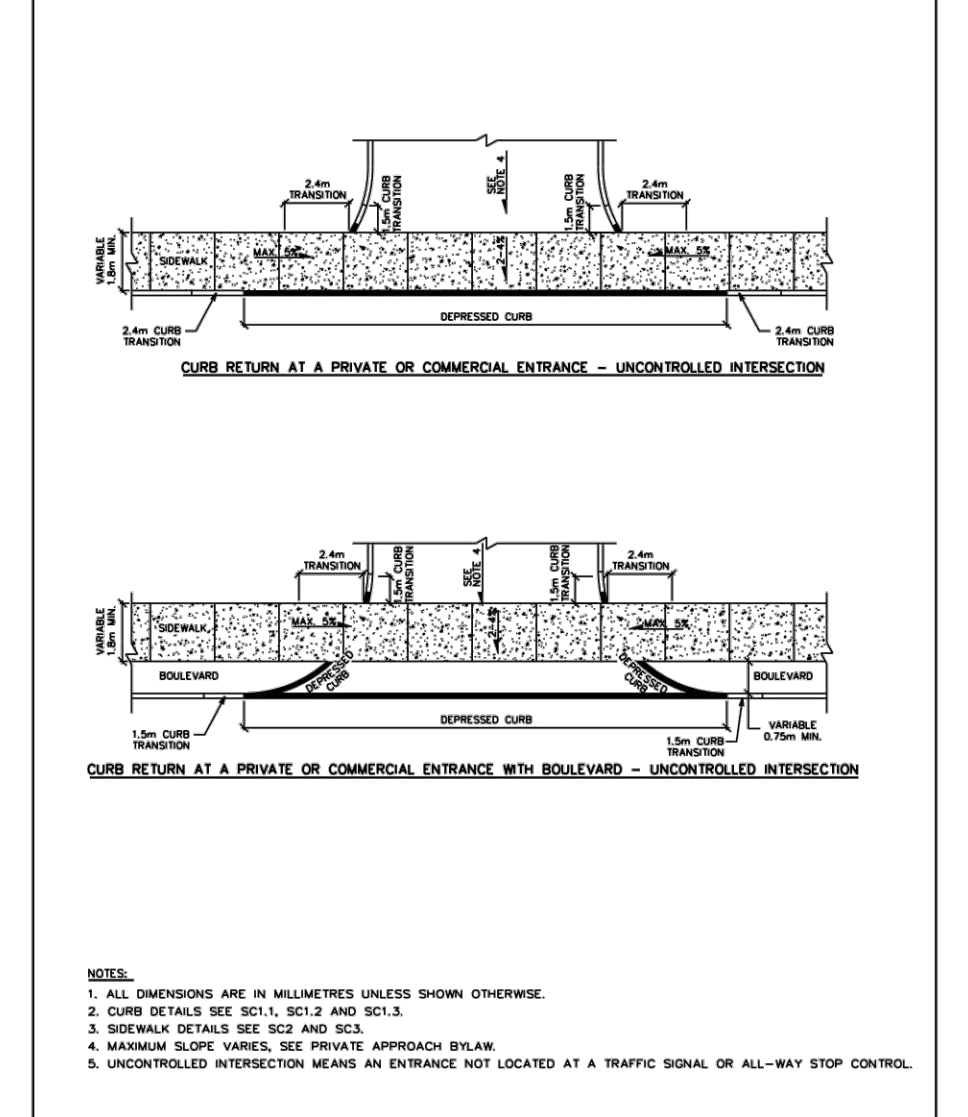
ONTARIO PROVINCIAL STANDARD DRAWING
FLEXIBLE PIPE EMBEDMENT AND BACKFILL EARTH EXCAVATION
 DATE: NOV 2014
 REV: 3
 DESG. NO.: OPSD 802.010



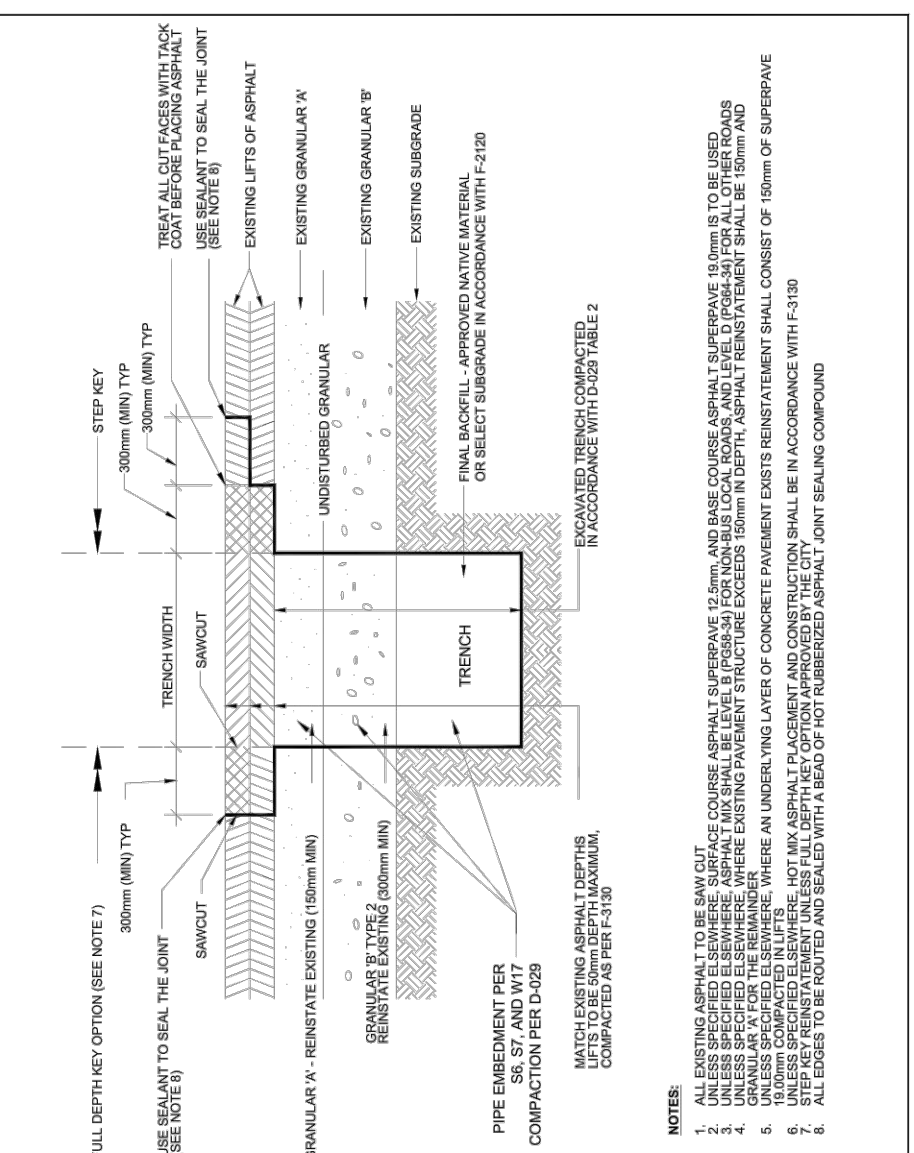
ONTARIO PROVINCIAL STANDARD DRAWING
FLEXIBLE PIPE EMBEDMENT AND BACKFILL ROCK EXCAVATION
 DATE: NOV 2014
 REV: 3
 DESG. NO.: OPSD 802.013



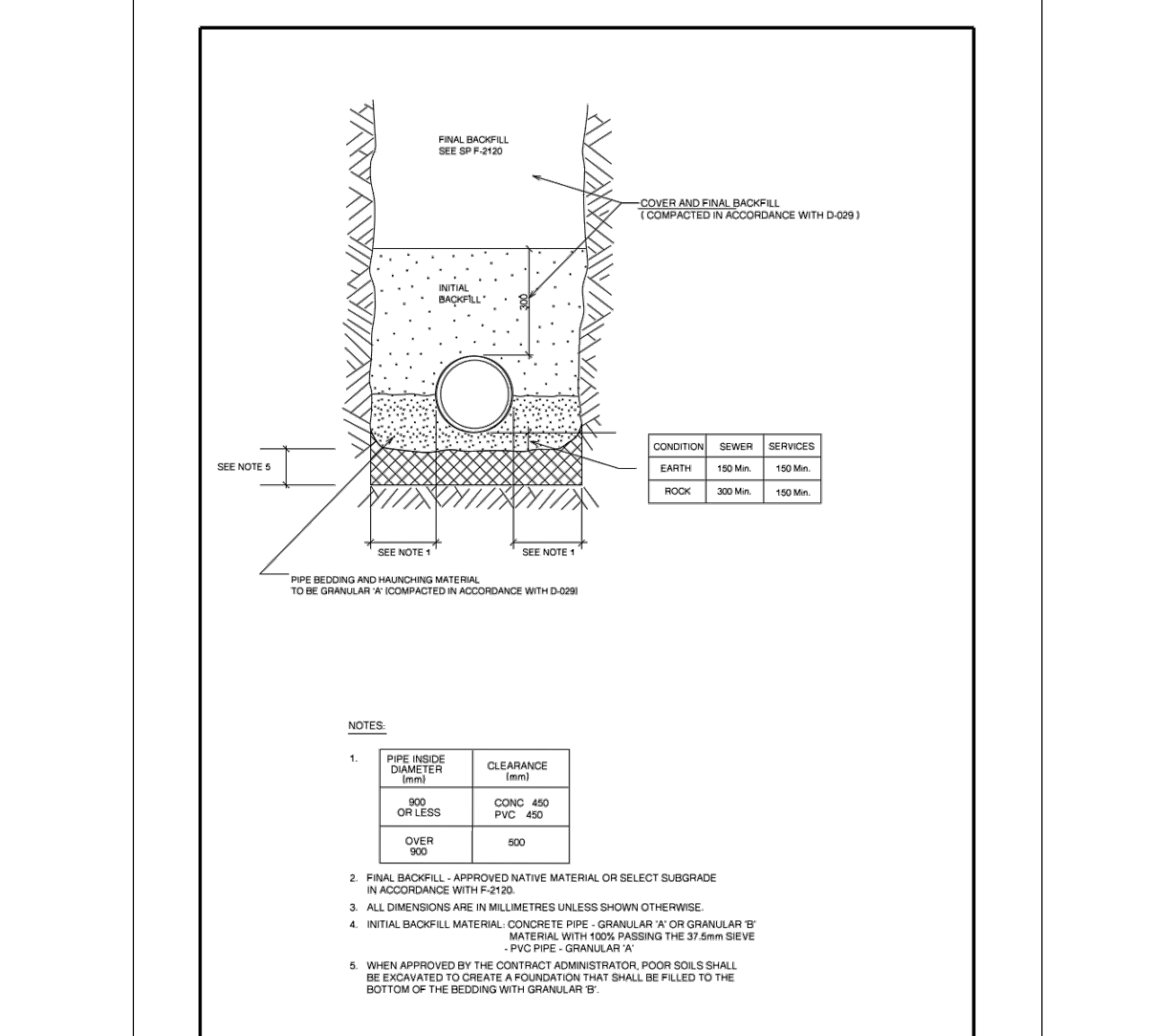
ONTARIO PROVINCIAL STANDARD DRAWING
CONCRETE BARRIER CURB FOR GRANULAR BASE PAVEMENT (MODIFIED OPSD-600.110)
 DATE: JANUARY 2003
 REV: 3
 DESG. NO.: SC1.1



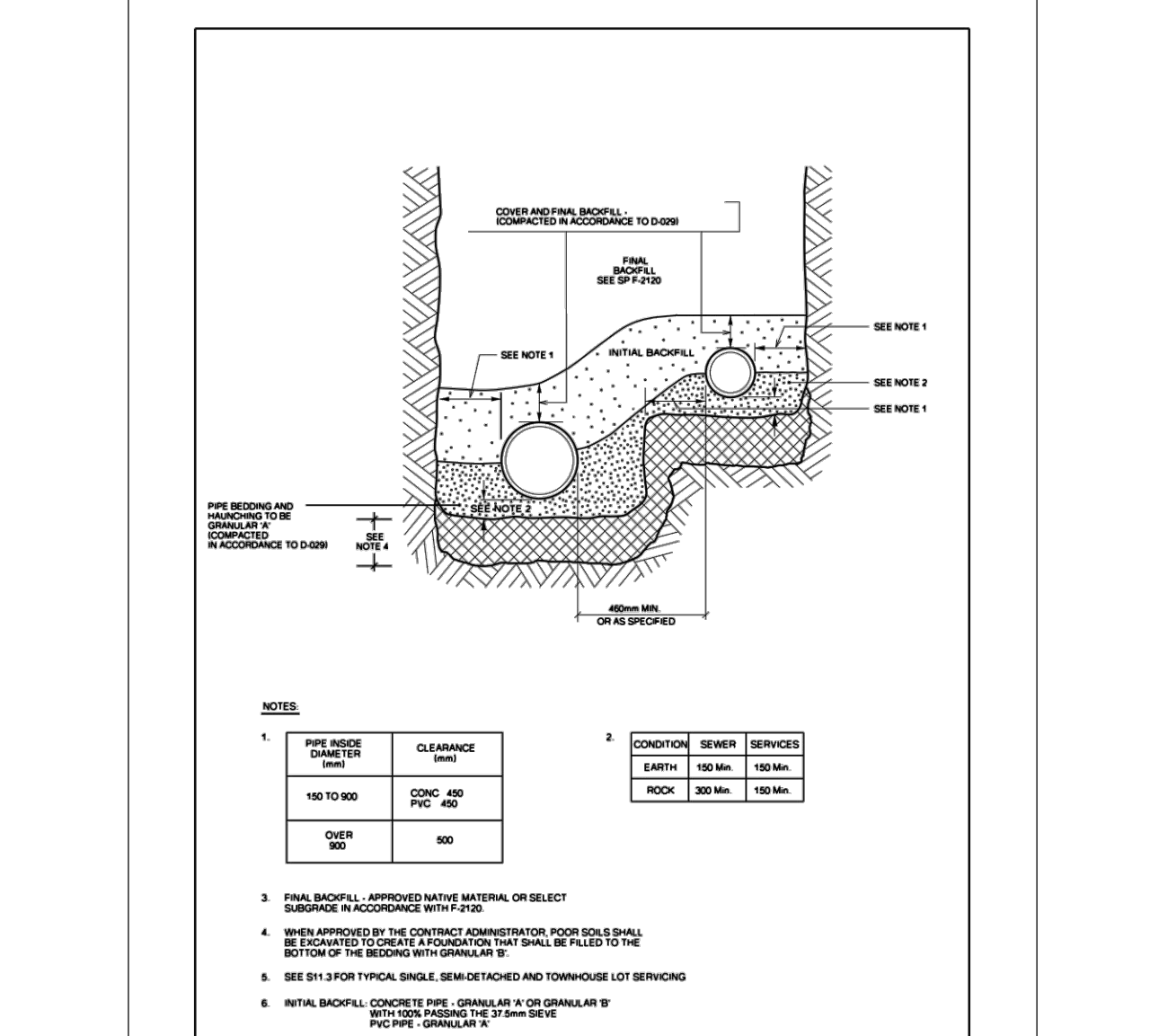
ONTARIO PROVINCIAL STANDARD DRAWING
CURB RETURN ENTRANCES - UNCONTROLLED INTERSECTIONS
 DATE: MARCH 2007
 REV: 1
 DESG. NO.: SC7.1



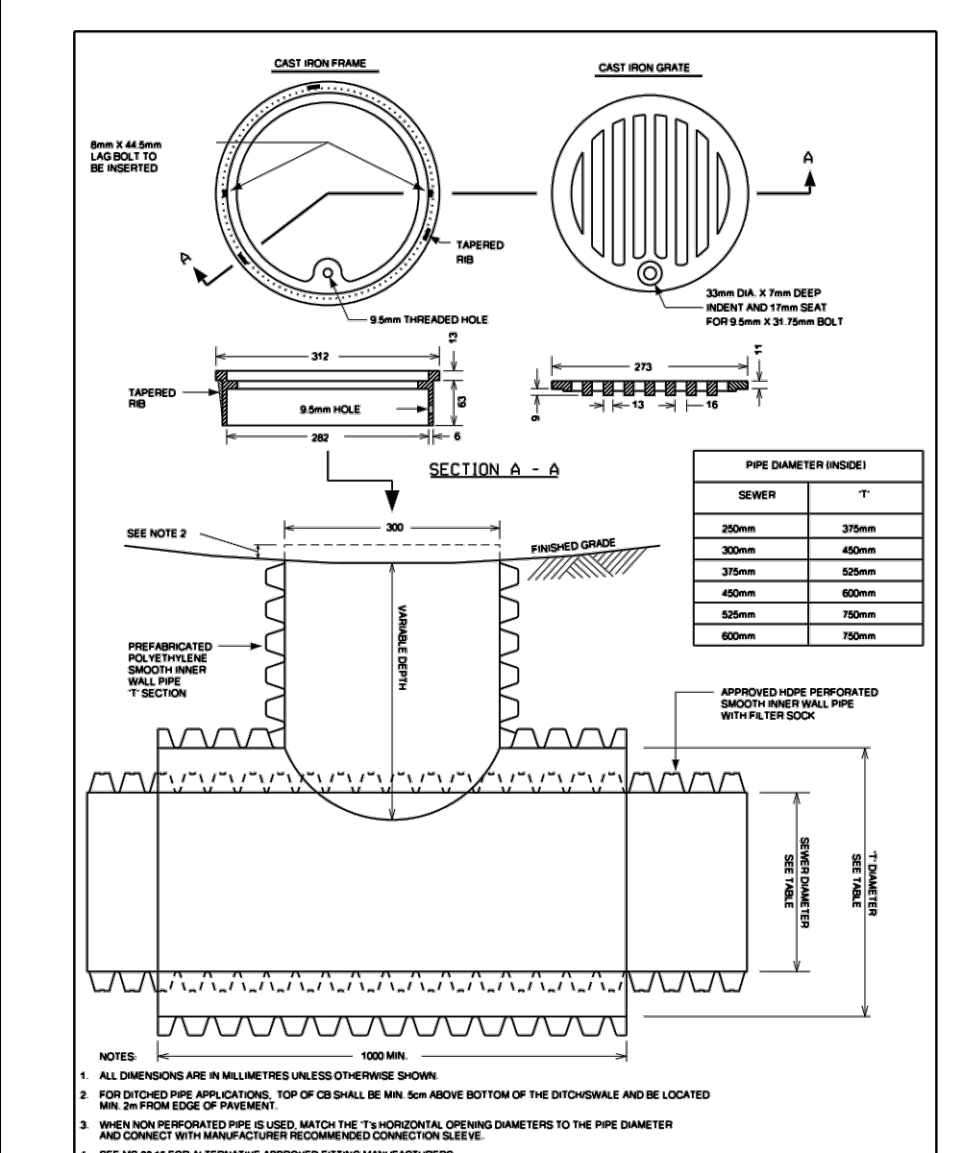
ONTARIO PROVINCIAL STANDARD DRAWING
STANDARD TRENCH REINSTATEMENT IN PAVED SURFACE
 DATE: MAY 2001
 REV: 2023
 DESG. NO.: R10



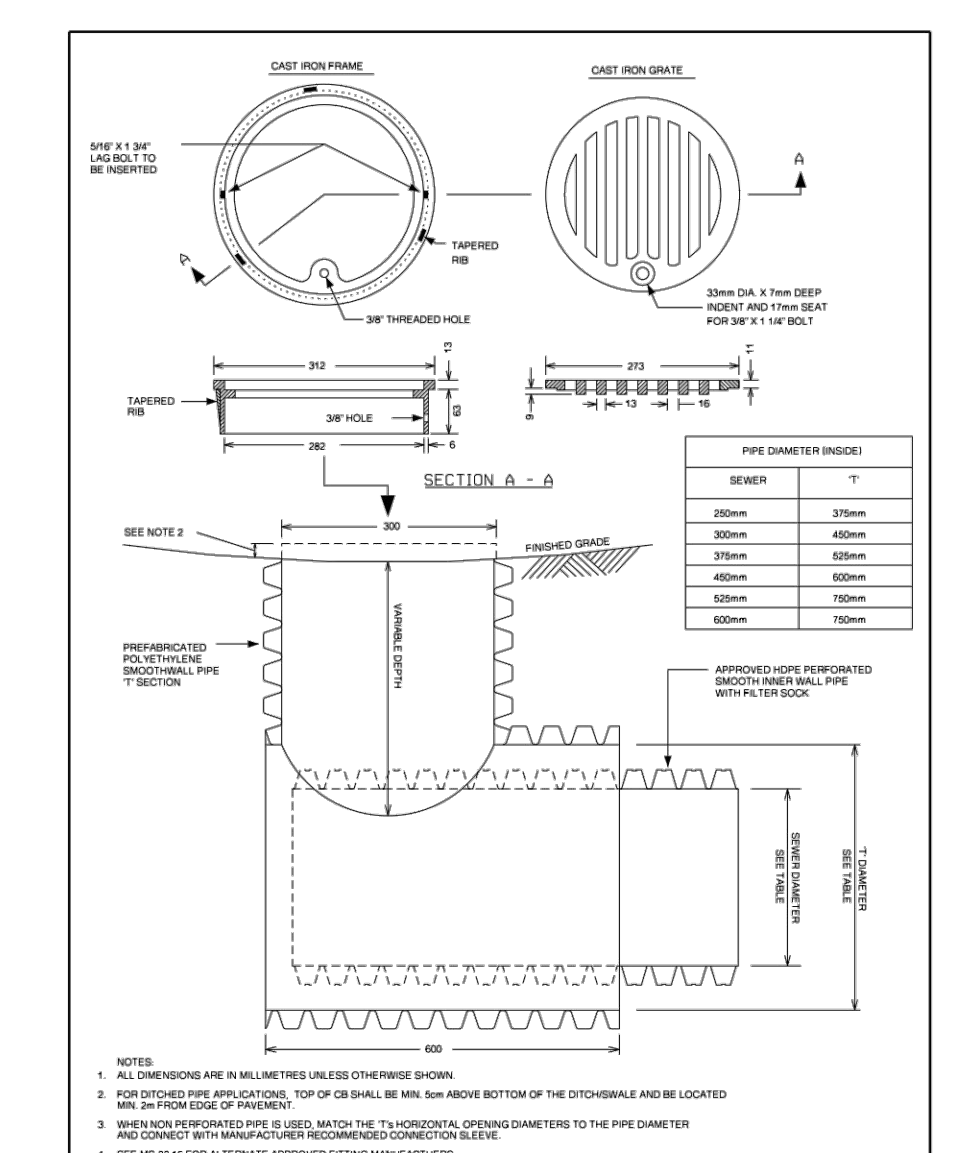
ONTARIO PROVINCIAL STANDARD DRAWING
SINGLE TRENCH (SEWER & SEWER SERVICES)
 DATE: MAY 2001
 REV: 2023
 DESG. NO.: S5



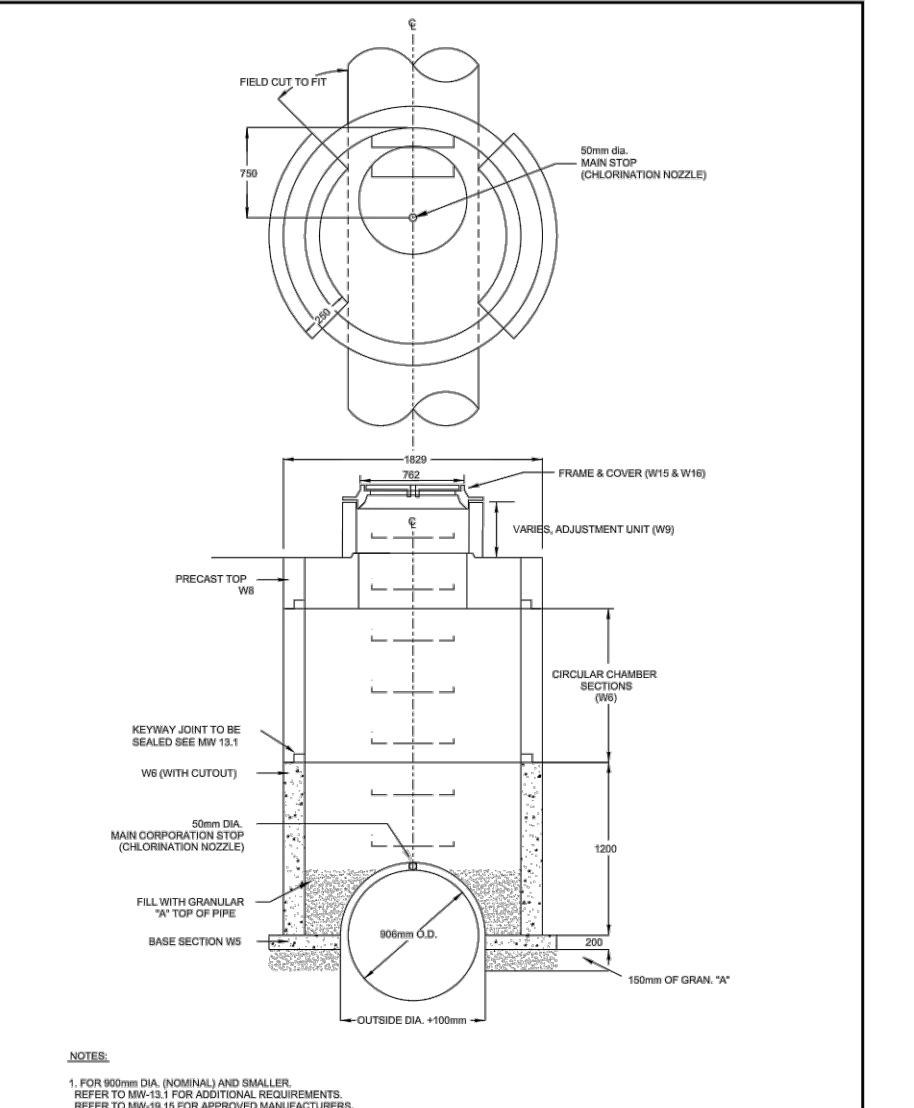
ONTARIO PROVINCIAL STANDARD DRAWING
COMBINED TRENCH (SEWERS & SEWER SERVICES)
 DATE: MAY 2001
 REV: 2023
 DESG. NO.: S7



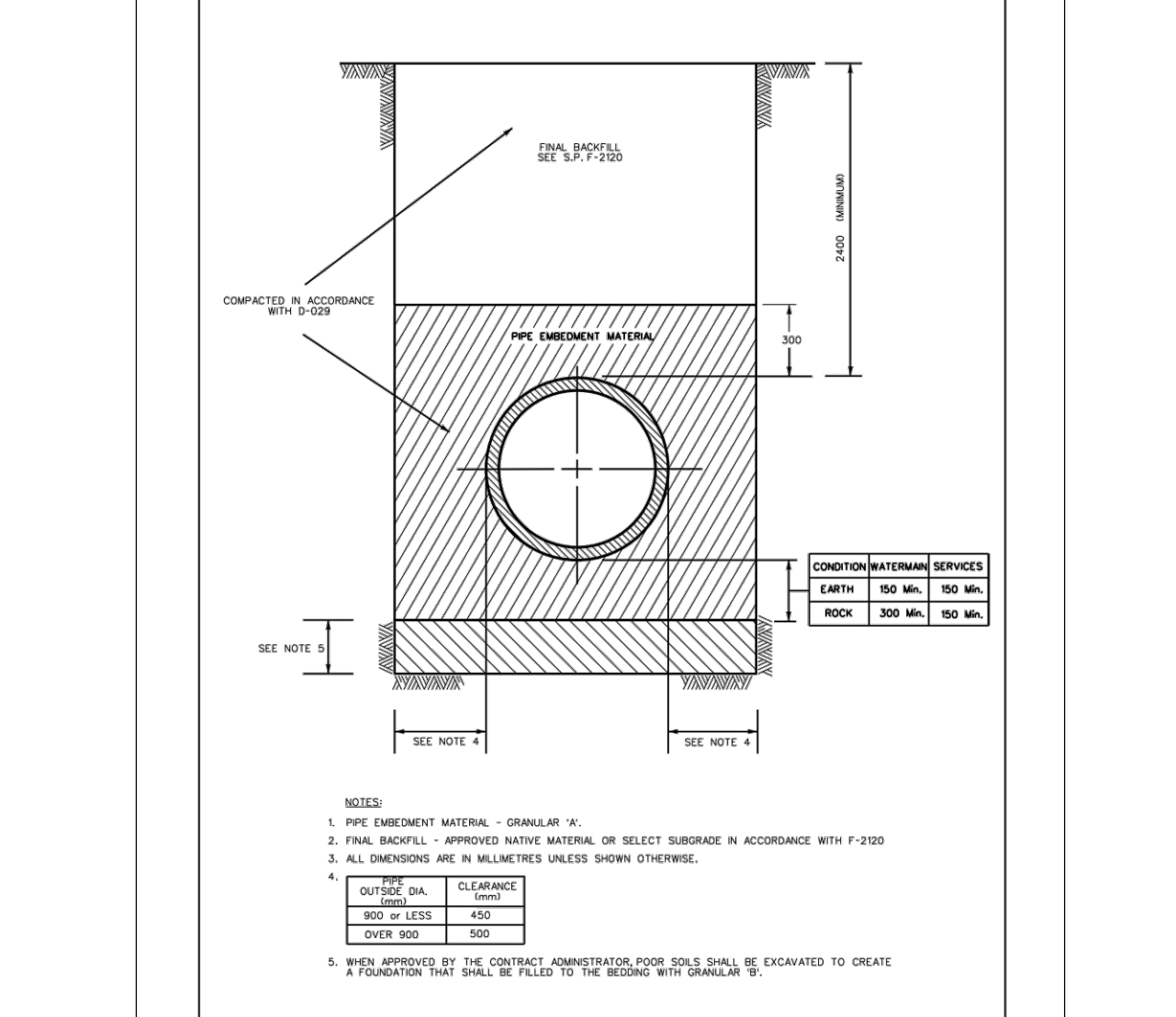
ONTARIO PROVINCIAL STANDARD DRAWING
CATCH BASIN - T FOR REAR YARD, DITCHED PIPE AND LANDSCAPING APPLICATIONS
 DATE: MARCH 2007
 REV: 2023
 DESG. NO.: S10



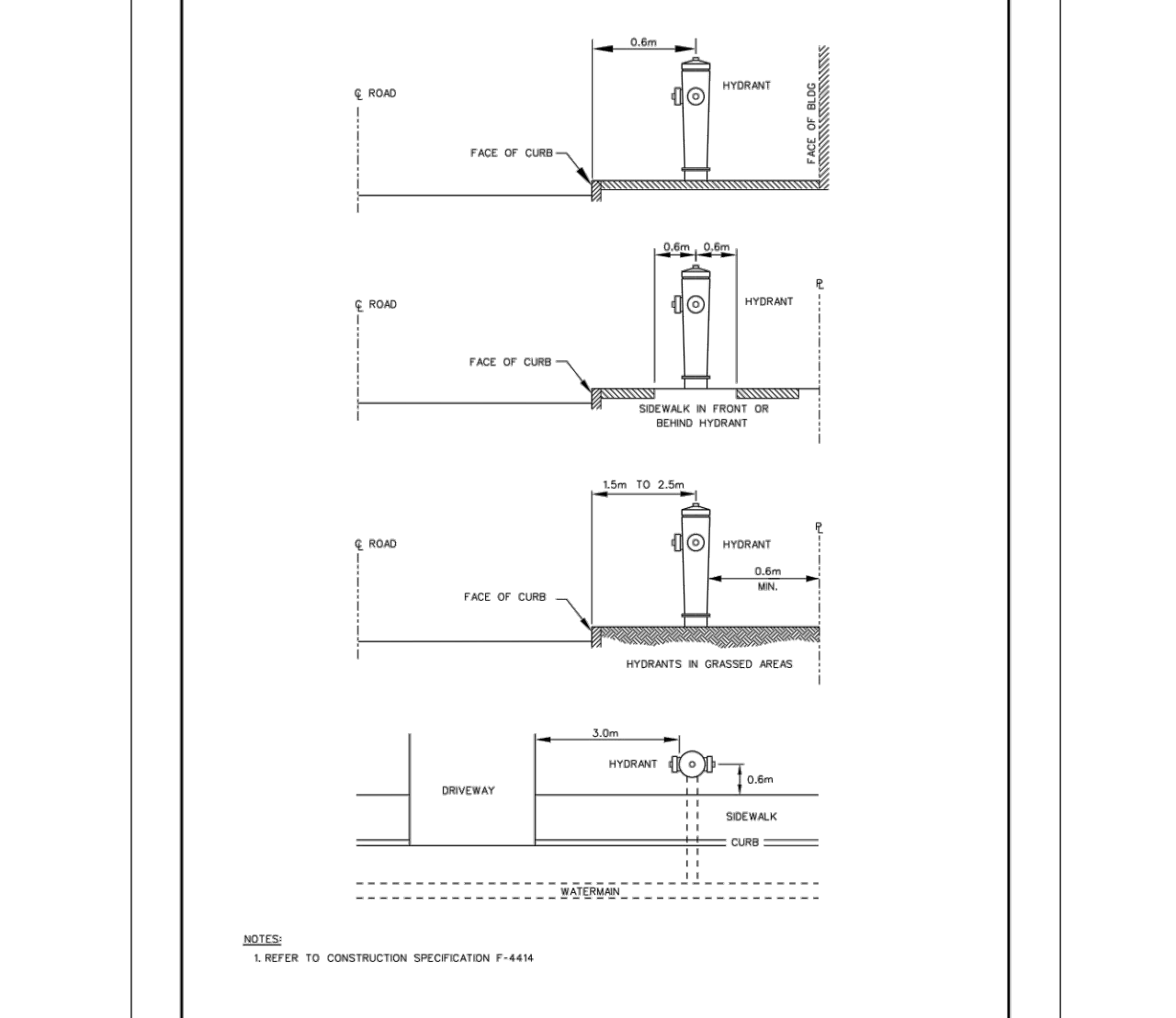
ONTARIO PROVINCIAL STANDARD DRAWING
CATCH BASIN - ELBOW FOR REAR YARD, DITCHED PIPE AND LANDSCAPING APPLICATIONS
 DATE: MARCH 2007
 REV: 2023
 DESG. NO.: S11



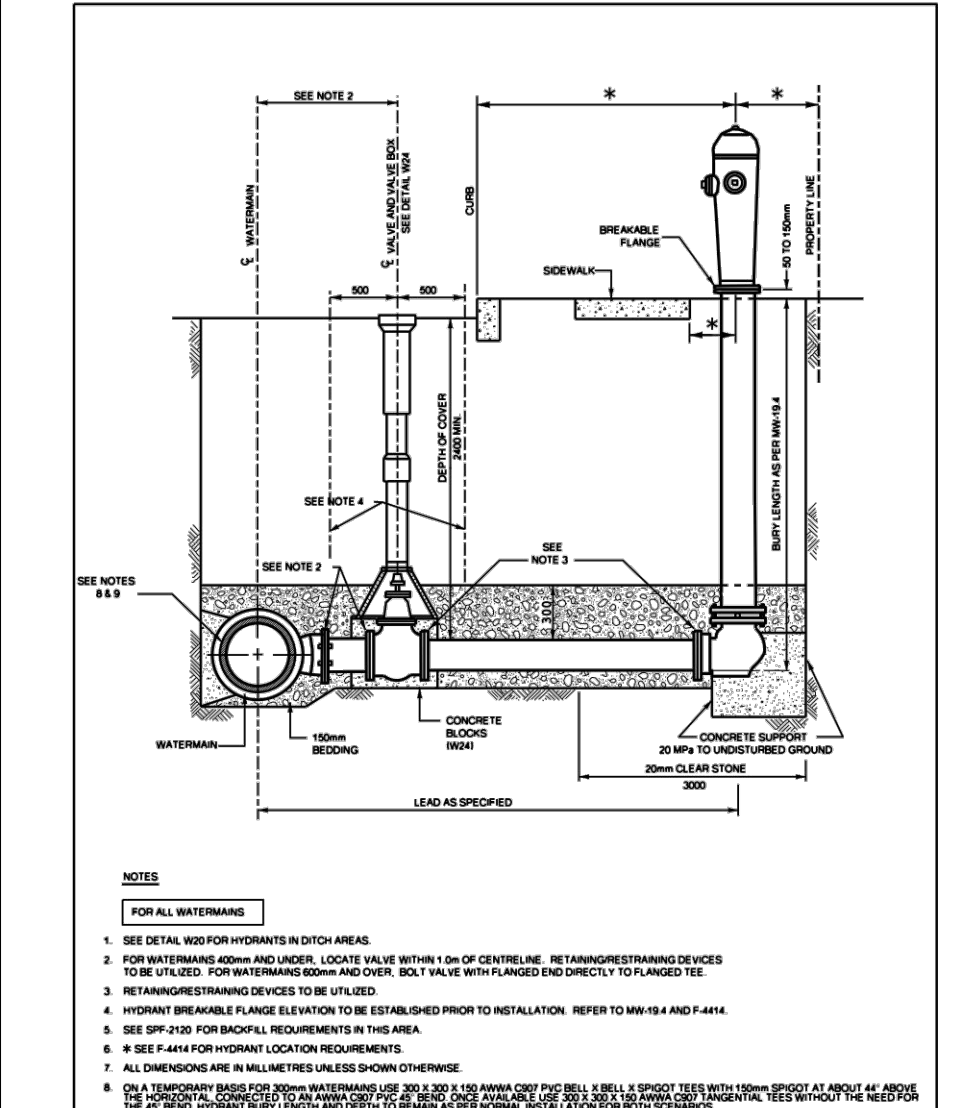
ONTARIO PROVINCIAL STANDARD DRAWING
FLOW MONITORING CHAMBER
 DATE: MAY 2001
 REV: 2023
 DESG. NO.: W3.1



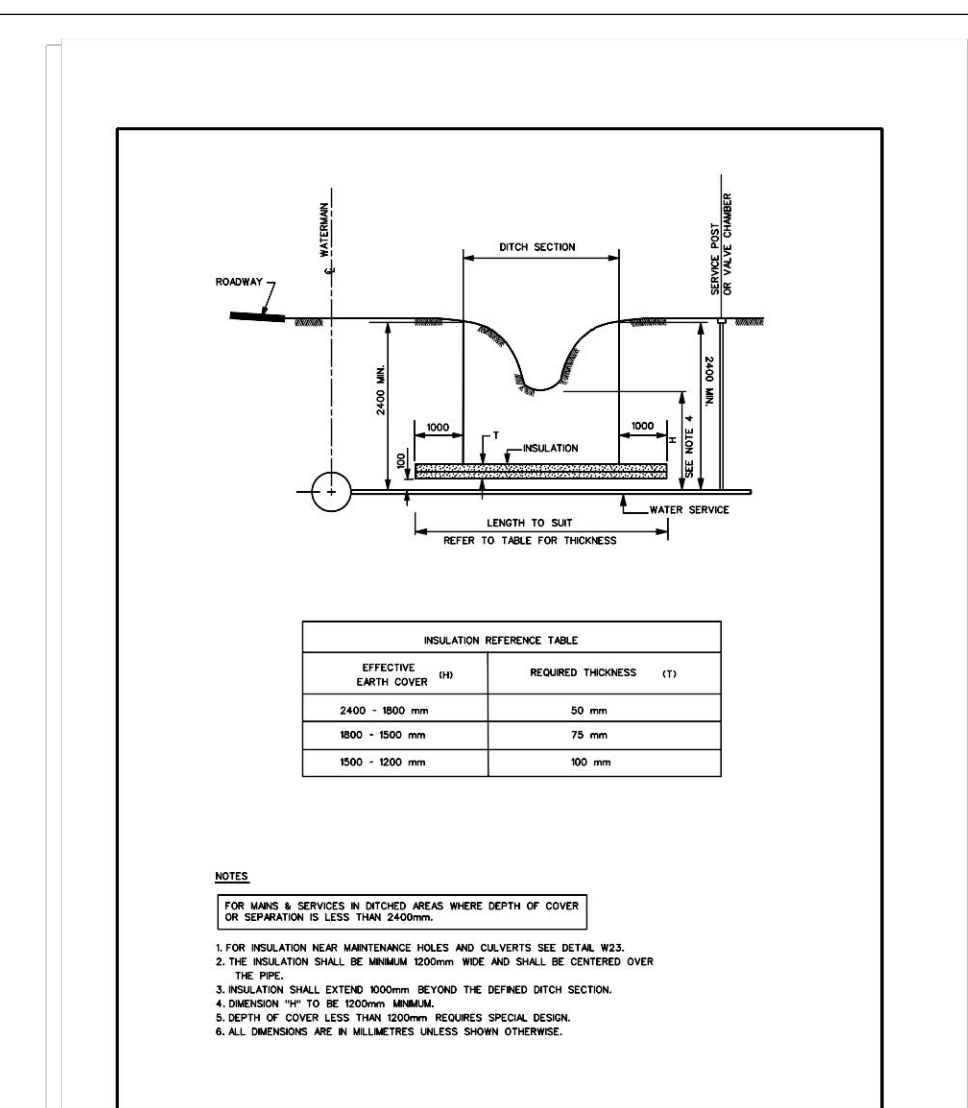
ONTARIO PROVINCIAL STANDARD DRAWING
STANDARD TRENCH DETAIL
 DATE: MAY 2001
 REV: 2023
 DESG. NO.: W17



ONTARIO PROVINCIAL STANDARD DRAWING
HYDRANT LOCATION
 DATE: MAY 2001
 REV: 2023
 DESG. NO.: W18



ONTARIO PROVINCIAL STANDARD DRAWING
HYDRANT INSTALLATION
 DATE: MAY 2001
 REV: 2023
 DESG. NO.: W19



ONTARIO PROVINCIAL STANDARD DRAWING
THERMAL INSULATION IN DITCHED AREAS
 DATE: MAY 2001
 REV: 2023
 DESG. NO.: W21

CAUTION
 THE POSITION OF ALL POLE LINES, CONDUITS, WATERMANS, SEWERS AND OTHER UNDERGROUND UTILITIES AND STRUCTURES IS NOT NECESSARILY SHOWN ON THE CONTRACT DRAWINGS, AND WHERE SHOWN, THE ACCURACY OF THE POSITION OF SUCH UTILITIES AND STRUCTURES IS NOT GUARANTEED. BEFORE STARTING WORK, DETERMINE THE EXACT LOCATION OF ALL SUCH UTILITIES AND STRUCTURES AND ASSUME ALL LIABILITY FOR DAMAGE TO THEM.

REV	REVISION DESCRIPTION	DATE	BY	APPD	REV	REVISION DESCRIPTION	DATE	BY	APPD
1	REVISED PER CITY COMMENTS	31/08/23	SAB	BMT					

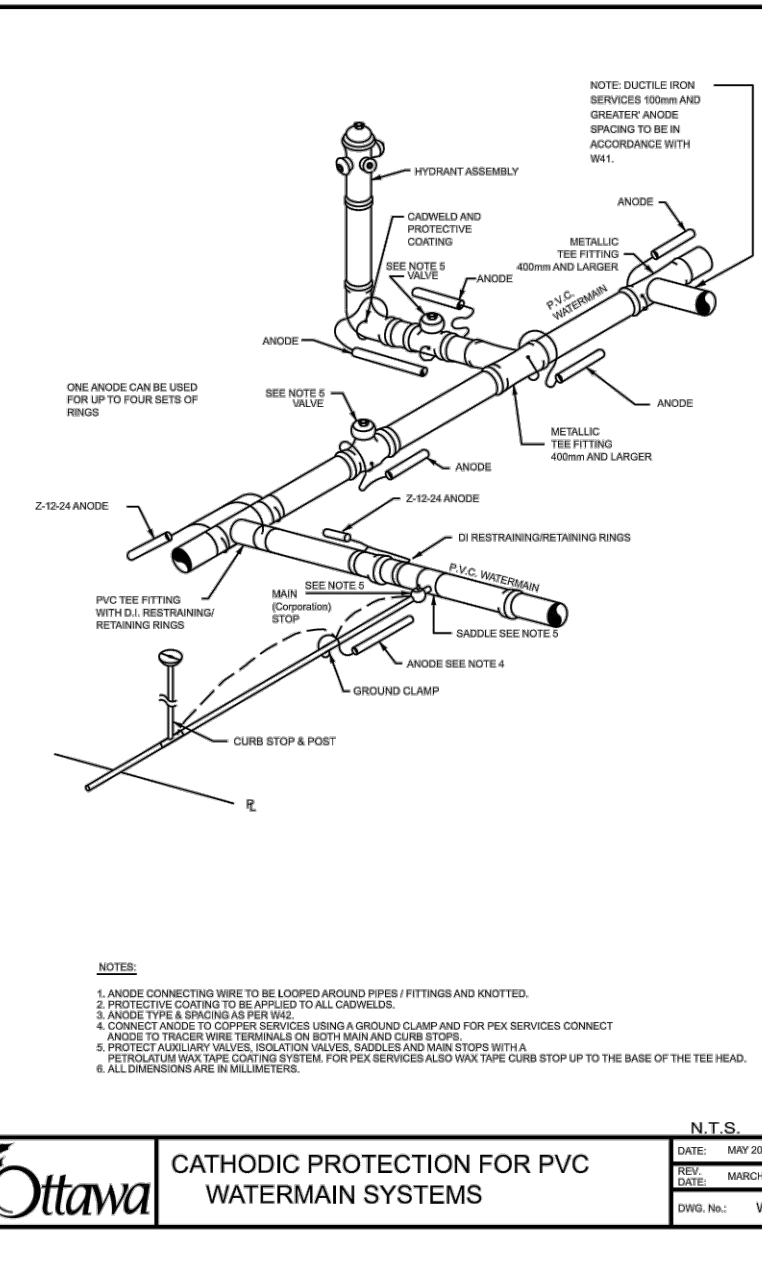
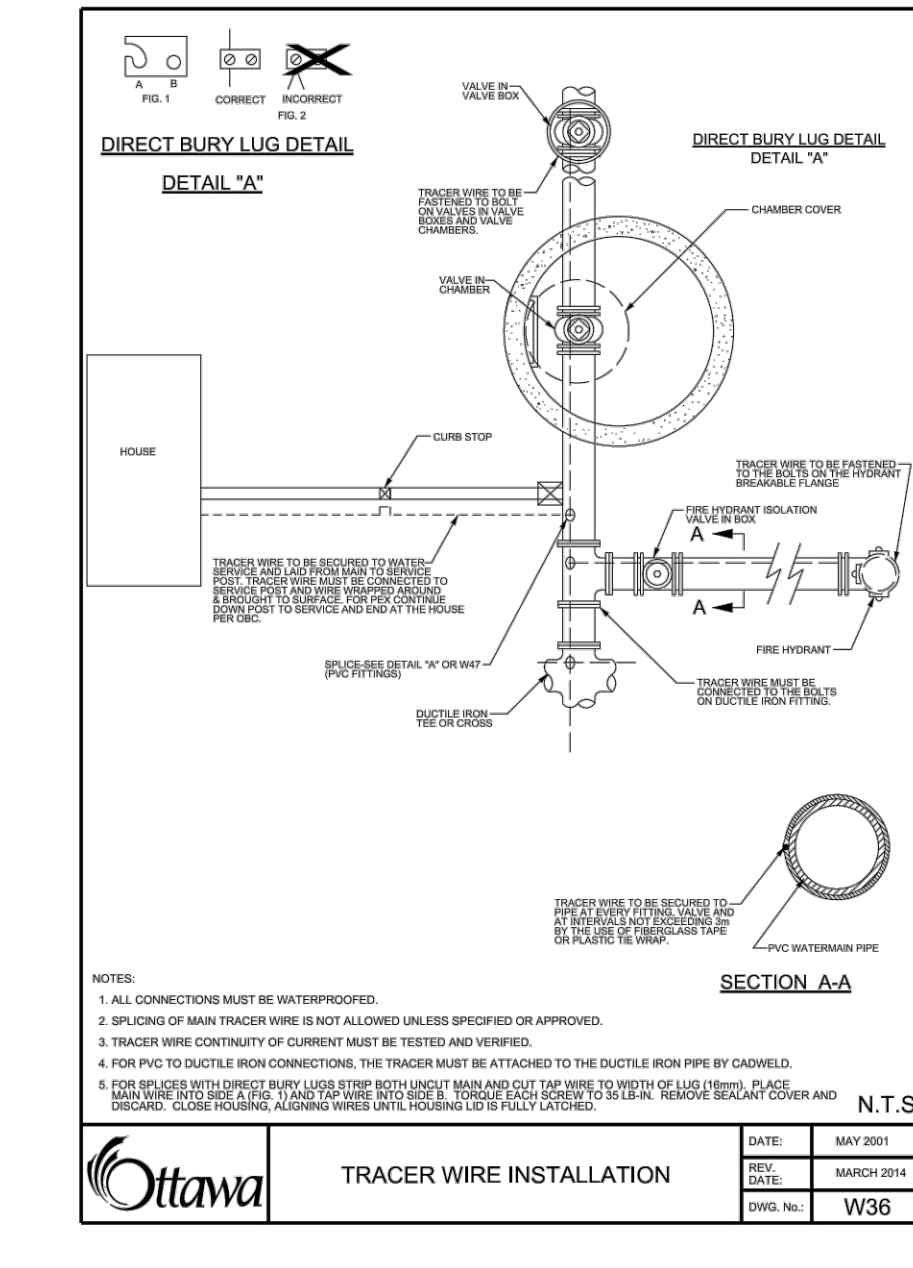
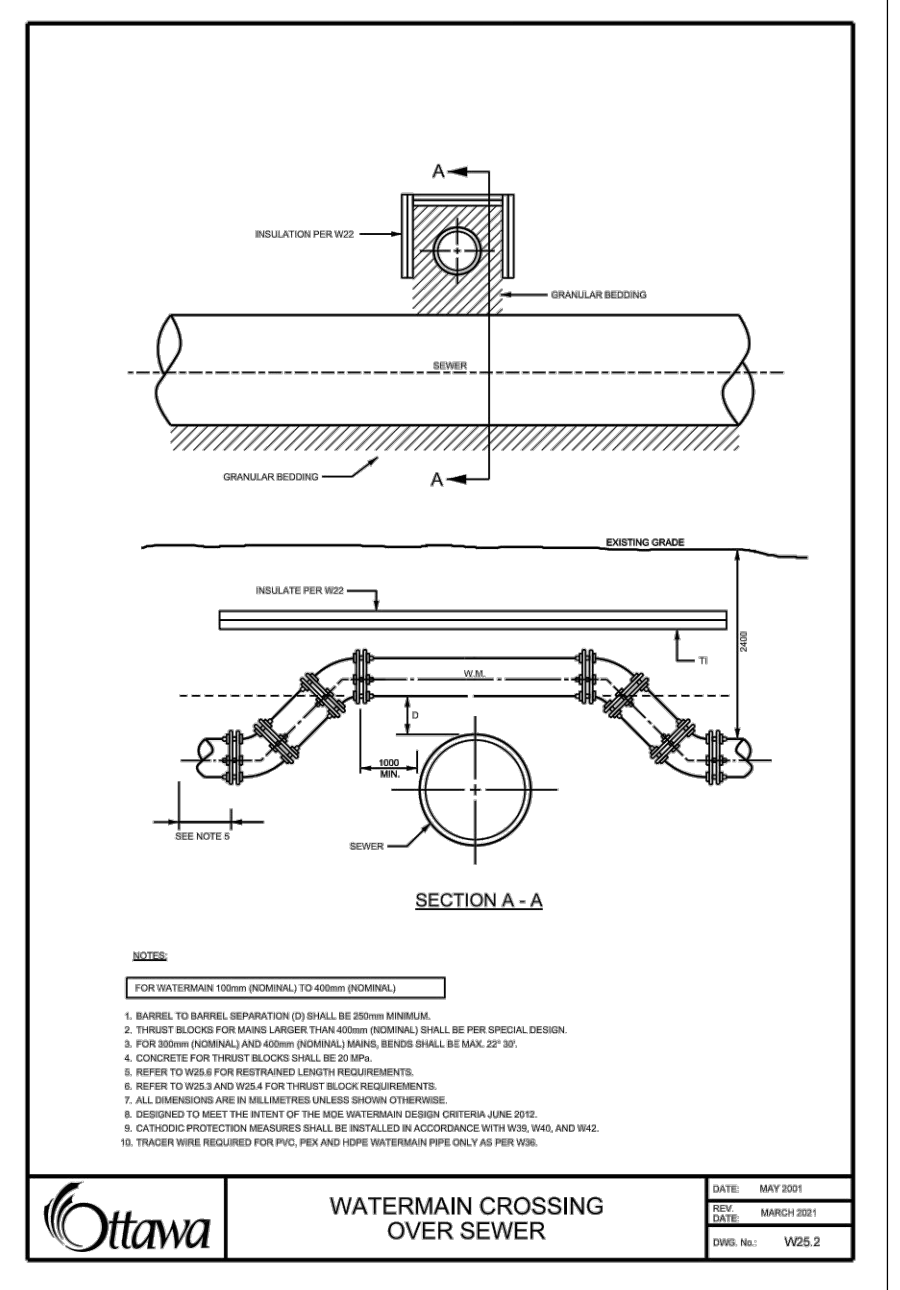
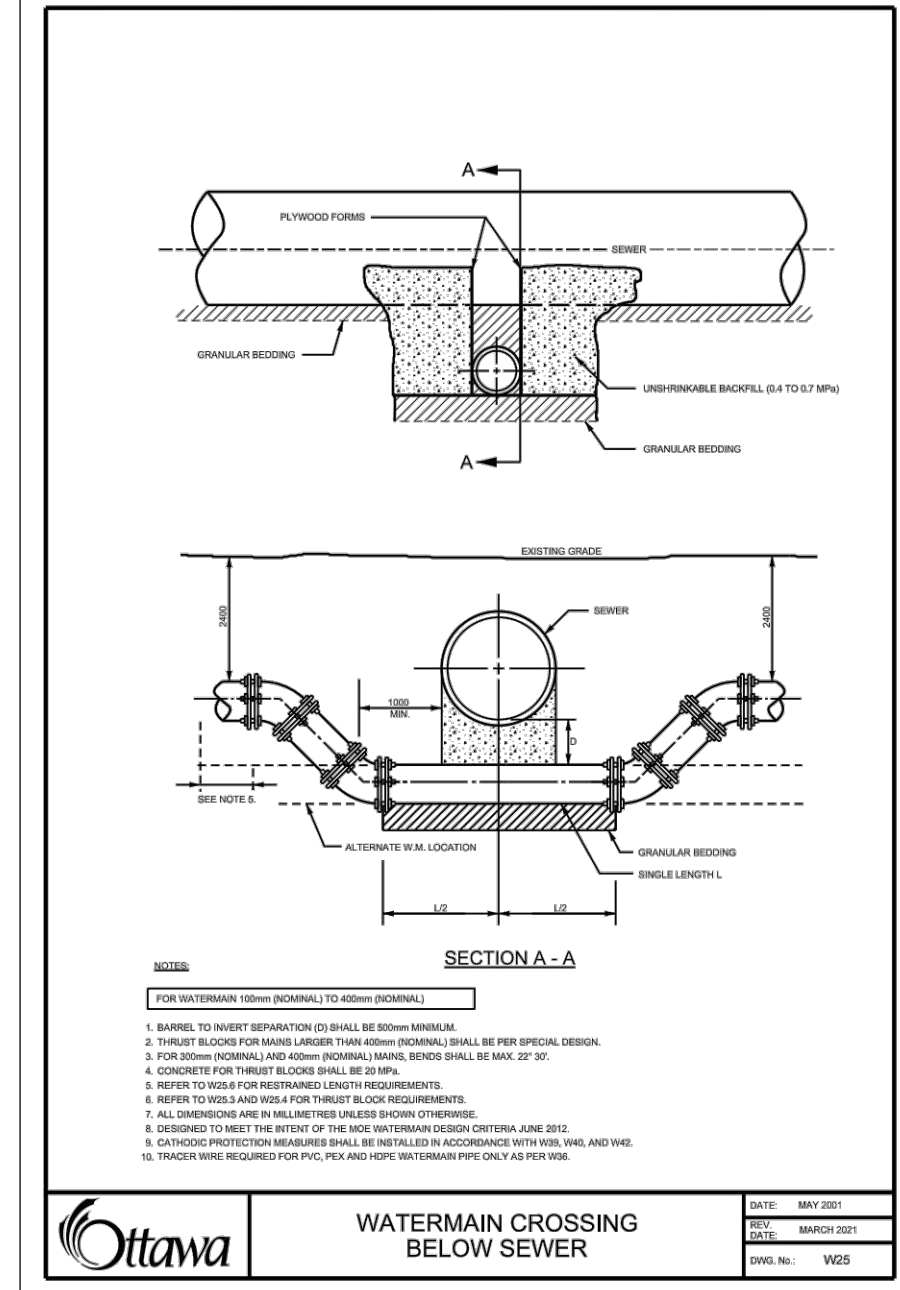
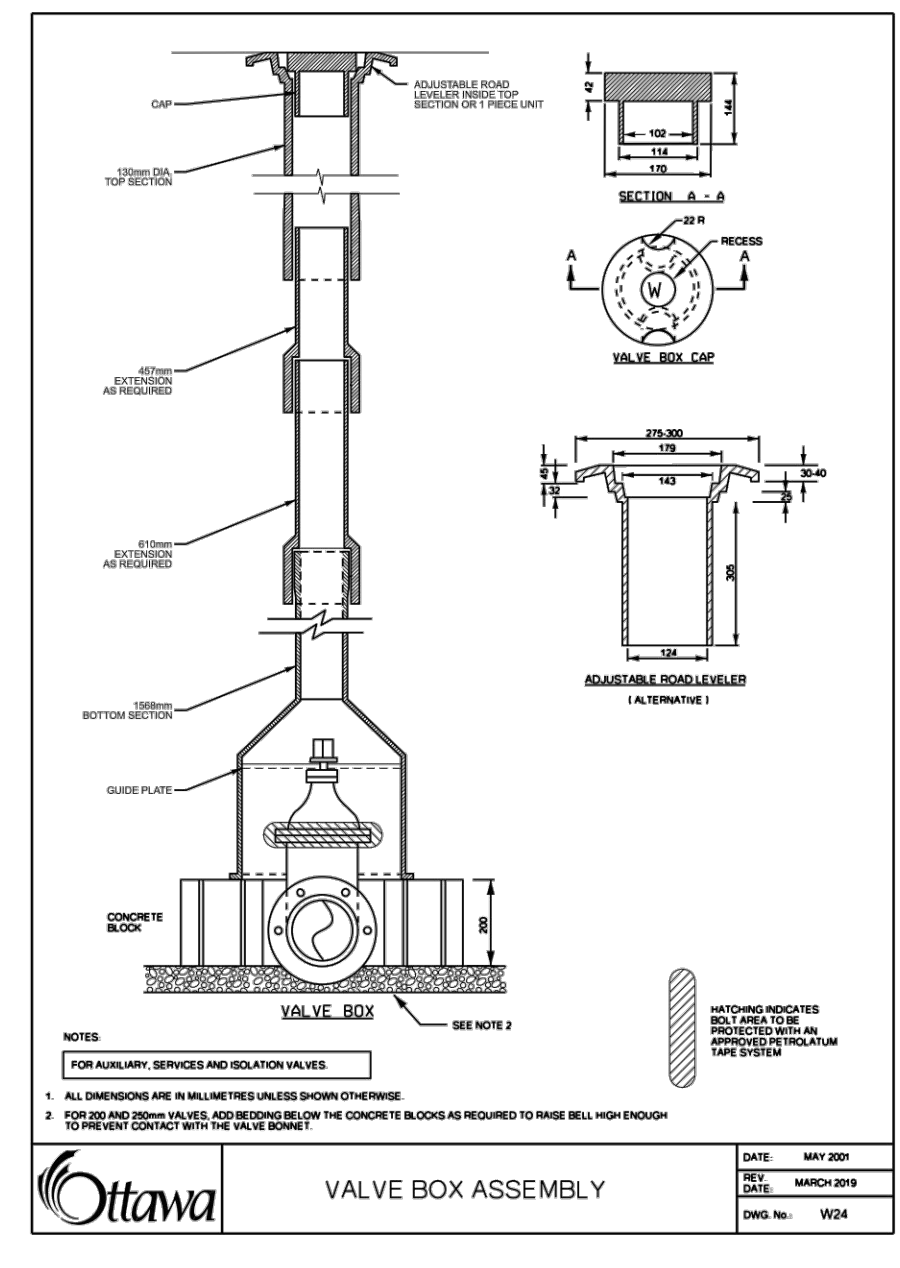
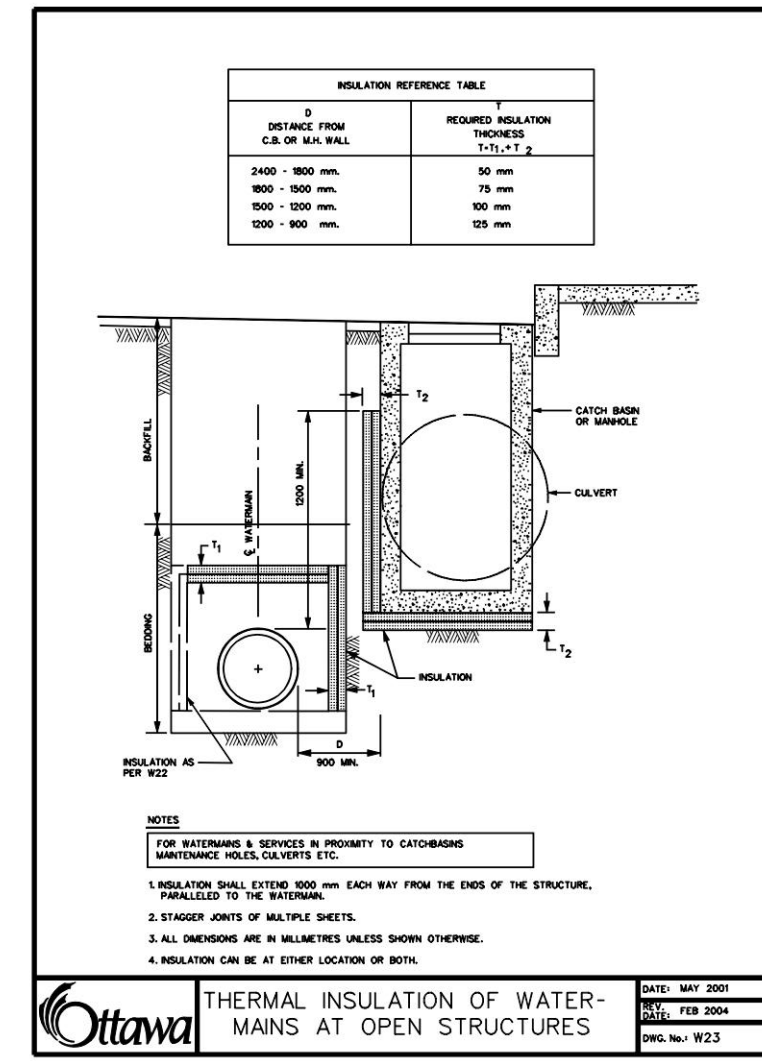
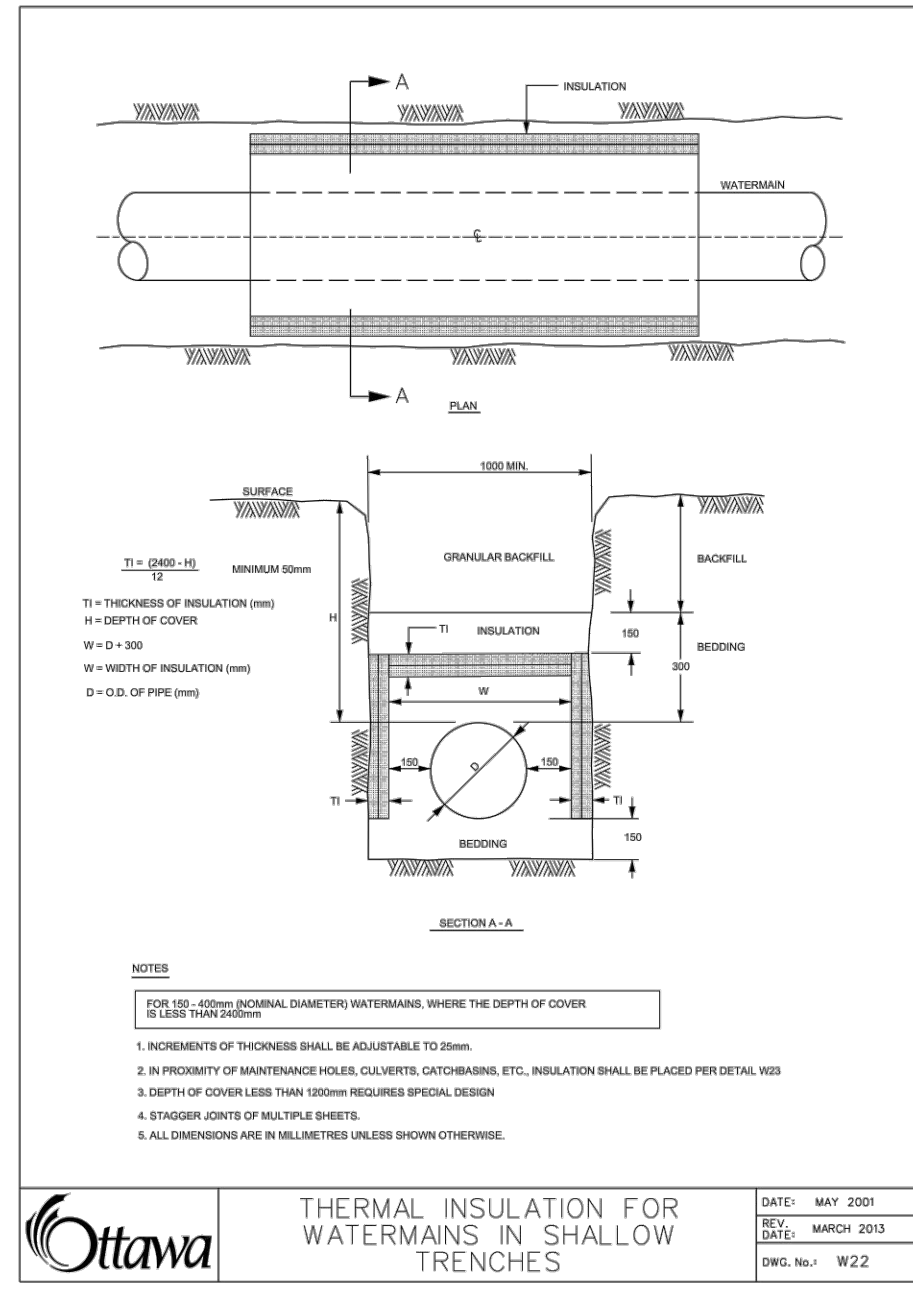
11421247 CANADA INC.
 100-768 ST. JOSEPH BOULEVARD
 GATINEAU, QC. J8Y 4B8

exp.
 • BUILDINGS • EARTH & ENVIRONMENT • ENERGY •
 • INDUSTRIAL • INFRASTRUCTURE • SUSTAINABILITY •

ST. LAURENT BOULEVARD DEVELOPMENT
 1740-1760 ST. LAURENT BLVD., OTTAWA, ON

STANDARD DETAILS SHEET

PROJECT NO.: OTT-260579-80
 SURVEY: ACV
 DATE: OCT 2020
 DRAWING NO.: C600



CAUTION
 THE POSITION OF ALL POLE LINES, CONDUITS, WATERMANS, SEWERS AND OTHER UNDERGROUND AND OVERGROUND UTILITIES AND STRUCTURES IS NOT NECESSARILY SHOWN ON THE CONTRACT DRAWINGS, AND WHERE SHOWN, THE ACCURACY OF THE POSITION OF SUCH UTILITIES AND STRUCTURES IS NOT GUARANTEED. BEFORE STARTING WORK, DETERMINE THE EXACT LOCATION OF ALL SUCH UTILITIES AND STRUCTURES AND ASSUME ALL LIABILITY FOR DAMAGE TO THEM.

REV	REVISION DESCRIPTION	DATE	BY	APPROV
1	REVISED PER CITY COMMENTS	31/08/23	SAB	BMT

SCALE	DESIGNED BY	REVIEWED BY	CLIENT
NORTH			11421247 CANADA INC. 100-768 ST. JOSEPH BOULEVARD GATINEAU, QC. J8Y 4B8

BASEPLAN	PROJECT	PROJECT No.
SK	ST. LAURENT BOULEVARD DEVELOPMENT 1740-1760 ST. LAURENT BLVD., OTTAWA, ON	OTT-260579-B0
DESIGN		SURVEY ACV
CHECKED	BMT	DATE OCT 2020
CAD	SAB	DRAWING No. C601
PROJECT MANAGER	BMT	
APPROVED	BMT	

exp. Services Inc.
 1-877-888-1899 / 1-613-225-7330
 2100 Carleton Place, Unit 100
 Ottawa, ON K2B 8K6
 Canada
 www.exp.com
 • BUILDINGS • EARTH & ENVIRONMENT • ENERGY •
 • INDUSTRIAL • INFRASTRUCTURE • SUSTAINABILITY •

PROJECT MANAGER	TITLE	DATE	PROJECT No.
BMT	STANDARD DETAILS SHEET	OCT 2020	OTT-260579-B0