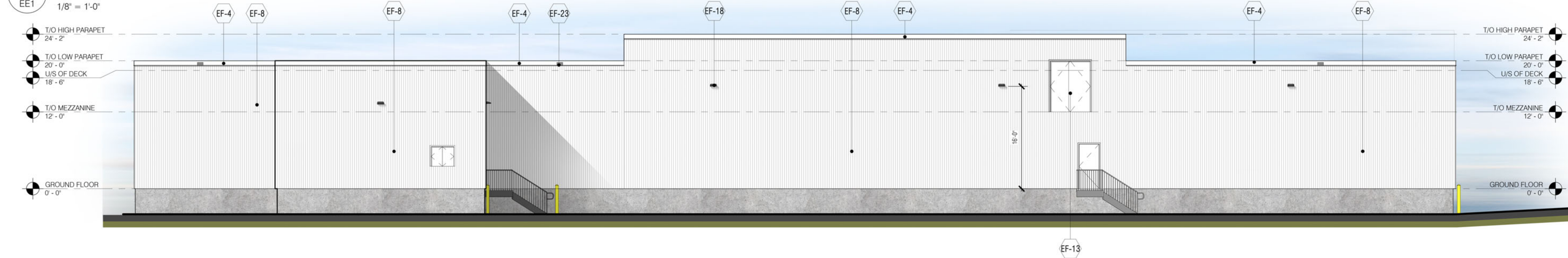
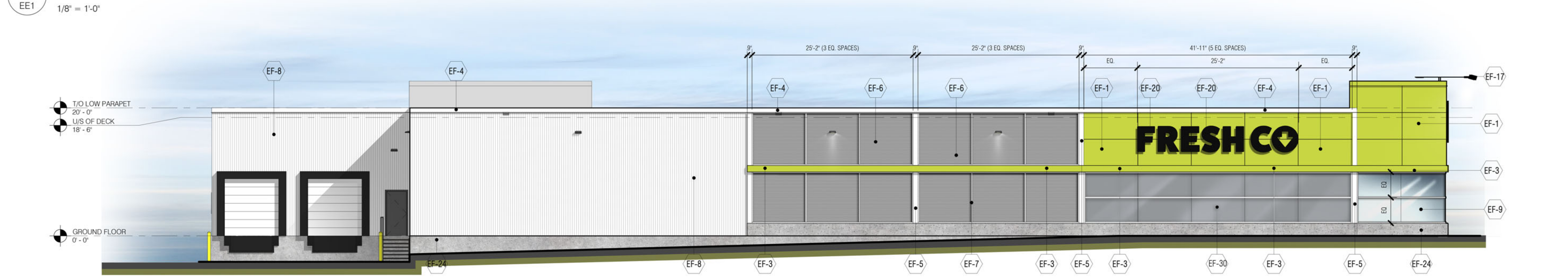


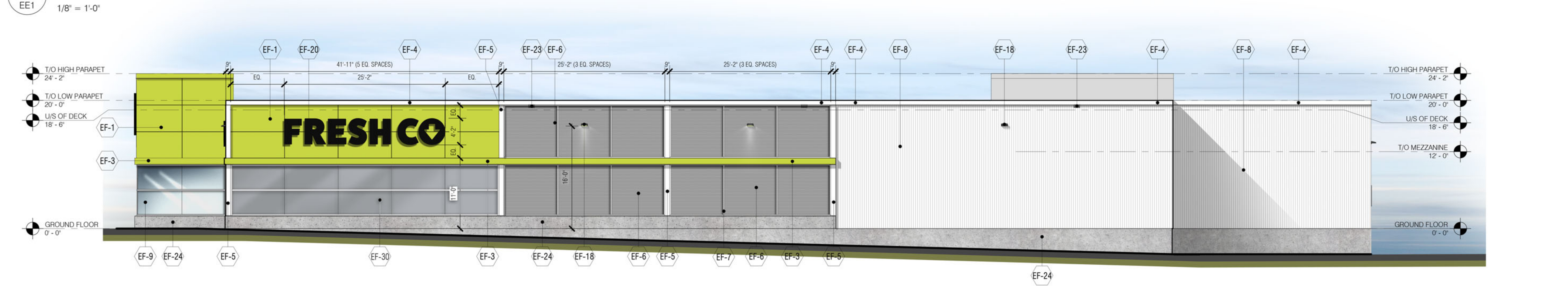
1 NORTH ELEVATION  
EE1 1/8" = 1'-0"



2 SOUTH ELEVATION  
EE1 1/8" = 1'-0"



3 EAST ELEVATION  
EE1 1/8" = 1'-0"



4 WEST ELEVATION  
EE1 1/8" = 1'-0"

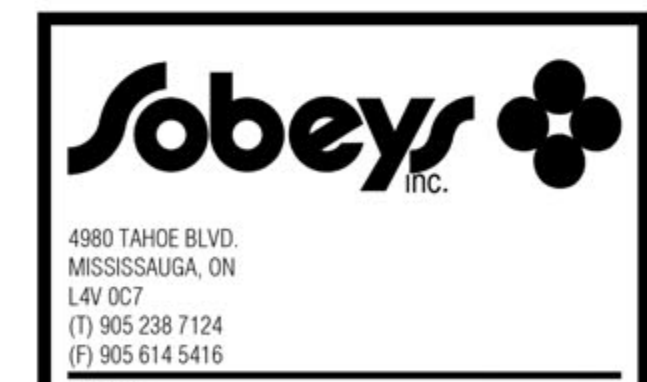
**EXTERIOR MATERIALS & FINISHES**

- EF-1 ALUMINUM COMPOSITE (ACM) PANELS  
SPECIFICATION: SYSTEM 3, DRY JOINT  
MANUFACTURER: VICWEST  
COLOUR: TO MATCH BENJAMIN MOORE 2020-20 'YEW GREEN' (PANTONE MATCH 382C)
- EF-2 ALUMINUM COMPOSITE (ACM) PANELS  
SPECIFICATION: SYSTEM 3, DRY JOINT  
MANUFACTURER: VICWEST  
COLOUR: 4-BNT-30 'BONE WHITE'
- EF-3 12" HIGH ALUMINUM COMPOSITE (ACM) PANEL FEATURE BAND  
PRODUCT: SYSTEM 3, DRY JOINT  
MANUFACTURER: VICWEST  
COLOUR: TO MATCH BENJAMIN MOORE 2020-20 'YEW GREEN' (PANTONE MATCH 382C)
- EF-4 PRE-FINISHED METAL CAP FLASHING  
COLOUR: VICWEST #56161 'CAMBRIDGE WHITE'
- EF-5 PRE-FINISHED VERTICAL BENT SHEET METAL FEATURE BAND  
COLOUR: VICWEST #56161 'CAMBRIDGE WHITE'
- EF-6 PRE-FINISHED METAL SIDING w/ MATCHING TRIM, INSTALLED HORIZONTALLY  
PROFILE: 7/8" CORRUGATED  
COLOUR: VICWEST #16082 'REGENT GREY'
- EF-7 VERTICAL & HORIZONTAL PRE-FINISHED METAL TRIM  
PROFILE: VICWEST PARTITION MOULDING #521  
COLOUR: VICWEST #16082 'REGENT GREY'
- EF-8 VICWEST VERTICAL METAL SIDING  
PROFILE: CL602SSR  
COLOUR: VICWEST CAMBRIDGE WHITE #16161
- EF-9 CLEAR ANODIZED ALUMINUM FRAMES c/w CLEAR GLAZING  
(SEE WINDOW SCHEDULE)
- EF-10 CLEAR ANODIZED ALUMINUM BI-PARTING DOOR c/w CLEAR GLAZING  
(SEE DOOR SCHEDULE)
- EF-11 CLEAR ANODIZED ALUMINUM DOOR c/w CLEAR GLAZING (SEE DOOR SCHEDULE)
- EF-12 CLEAR ANODIZED ALUMINUM COLUMN COVER  
(SEE DOOR SCHEDULE)
- EF-13 HOLLOW METAL DOOR c/w HOLLOW METAL FRAME (SEE DOOR SCHEDULE)  
COLOUR: TO MATCH VICWEST #56161 'CAMBRIDGE WHITE'
- EF-14 INSULATED GARBAGE COMPACTOR ACCESS DOOR c/w PAINTED FINISH  
(SEE DOOR SCHEDULE)  
COLOUR: TO MATCH VICWEST #56161 'CAMBRIDGE WHITE'
- EF-15 PRE-FINISHED INSULATED OVERHEAD SECTIONAL DOOR, SEAL AND BUMPERS.  
(SEE DOOR SCHEDULE)
- EF-16 STEEL STAIR, LANDING, AND RAIL c/w OPEN GRATE TREADS  
ALL TO BE HOT DIPPED GALVANIZED (SEE STRUCTURAL)  
GENERAL CONTRACTOR IS TO SUBMIT SHOP DRAWINGS FOR APPROVAL
- EF-17 ROOF PARAPET MOUNTED RETRACTABLE FASCIA LIGHTING FIXTURE  
(SEE ELECTRICAL, REFLECTED CEILING PLAN AND ROOF PLAN)
- EF-18 EXTERIOR WALL MOUNTED FLOOD LIGHT FIXTURE (SEE ELECTRICAL). PAINTED.  
COLOUR: DARK GREY
- EF-19 'STORE HOURS' SIGN (SEE DECOR DRAWINGS)
- EF-20 ALUMINUM 'FRESH CO.' NON-ILLUMINATED INDIVIDUAL LETTERS BY SIGNAGE CONTRACTOR. COLOUR: BLACK
- EF-21 ALUMINUM 'LOWERING FOOD PRICES' NON-ILLUMINATED INDIVIDUAL LETTERS BY SIGNAGE CONTRACTOR. COLOUR: BLACK
- EF-22 CONTRACTOR TO PROVIDE 1/2" EXTERIOR GRADE PLYWOOD BACKING BEHIND SIGNAGE.
- EF-23 ROOF SCUPPER.
- EF-24 CONCRETE FOUNDATION WALL (SEE STRUCTURAL).  
COLOUR: NATURAL CONCRETE COLOUR.
- EF-25 POURED CONCRETE SIDEWALK
- EF-26 STEEL BOLLARD c/w CONCRETE FILL  
COLOUR: YELLOW
- EF-27 DOCK LEVELLER
- EF-28 WINDOW FILM AND 'ENTRANCE', 'EXIT' LETTERING BY SIGNAGE CONTRACTOR
- EF-29 'WE PRICE MATCH' BANNER. SUPPLIED AND INSTALLED BY SIGNAGE CONTRACTOR
- EF-30 SPANDREL GLAZING  
COLOUR: DPAC-CDA1 300, 3-0770 WARM GREY C/W CLEAR ANODIZED ALUMINUM THERMALLY BROKEN FRAMES  
(GENERAL CONTRACTOR TO SUBMIT SAMPLE TO THE DESIGNER FOR APPROVAL PRIOR TO FABRICATION)

THIS DRAWING, AS AN INSTRUMENT OF SERVICE, IS PROVIDED BY AND IS THE PROPERTY OF THE DESIGNER. THE CONTRACTOR MUST VERIFY AND ACCEPT RESPONSIBILITY FOR ALL DIMENSIONS AND CONDITIONS ON SITE AND MUST NOTIFY THE DESIGNER OF ANY VARIATIONS FROM THE SUPPLIED INFORMATION. THIS DRAWING IS NOT TO BE SCALED. DESIGN SERVICES ARE NOT RESPONSIBLE FOR THE ACCURACY OF SURVEY, STRUCTURAL, MECHANICAL, ELECTRICAL, AND OTHER CONSULTANT INFORMATION SHOWN ON THIS DRAWING. REFER TO THE APPROPRIATE CONSULTANT'S DRAWINGS BEFORE PROCEEDING WITH THE WORK. CONSTRUCTION MUST CONFORM TO ALL APPLICABLE CODES AND REQUIREMENTS OF AUTHORITIES HAVING JURISDICTION. THE CONTRACTOR WORKING FROM DRAWINGS NOT SPECIFICALLY MARKED FOR CONSTRUCTION MUST ASSUME FULL RESPONSIBILITY AND BEAR COSTS FOR ANY CORRECTIONS OR DAMAGES RESULTING FROM HIS WORK.

REV.	DESCRIPTION	DATE
3	ISSUED FOR SPA	2021.10.25
2	ADD SPANDREL GLAZING UNDER FRESH CO SIGN @ EAST & WEST ELEVATION	2021.10.18
1	ADD EXTERIOR DOOR TO SOUTH ELEVATION	2021.09.30
0	NEW EXTERIOR ELEVATIONS AS PER LATEST SITE PLAN DATED 2021.08.09	2021.08.25

REV.	DESCRIPTION	DATE
△	REVISION	
□	ISSUED	
○	APPROVAL	



4080 TANGIE BLVD.  
MISSISSAUGA, ON  
L4W 0C7  
TEL: 905.288.7124  
TEL: 905.614.5416

PROJECT:  
**NEW BUILD**  
**FRESH CO**  
ORLEANS  
TRIM RD. & WATERS RD.  
OTTAWA ONTARIO

DRAWING:  
**EXTERIOR ELEVATIONS**

DRAWN:	CHECKED:	APPROVED:
MS	MS	MS
DATE: 08/23/21	SCALE: As indicated	JOB NUMBER: 21032
DRAWING NUMBER: EE1	REVISION NUMBER: R3	

