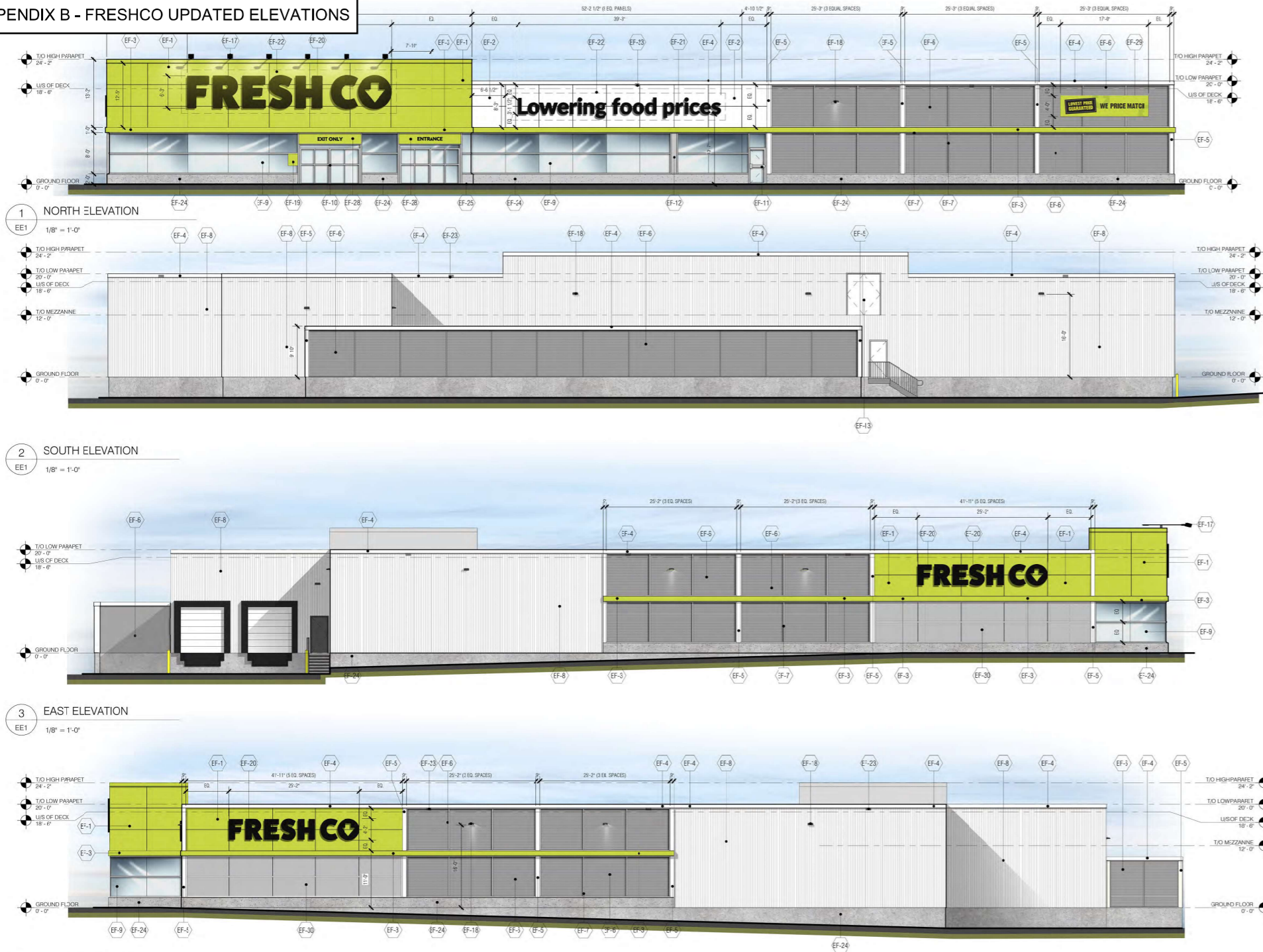


APPENDIX B - FRESHCO UPDATED ELEVATIONS



- EXTERIOR MATERIALS & FINISHES**
- (F-1) ALUMINUM COMPOSITE (ACM) PANELS  
SPECIFICATION: SYSTEM 3, DRY JOINT  
MANUFACTURER: VICWEST  
COLOUR: 4-BNT-50 "BOKE WHITE"
  - (F-2) ALUMINUM COMPOSITE (ACM) PANELS  
SPECIFICATION: SYSTEM 3, DRY JOINT  
MANUFACTURER: VICWEST  
COLOUR: 4-BNT-50 "BOKE WHITE"
  - (F-3) 12" HIGH ALUMINUM COMPOSITE (ACM) PANEL FEATURE BAND  
PRODUCT: SYSTEM 3, DRY JOINT  
MANUFACTURER: VICWEST  
COLOUR: TO MATCH BENJAMIN MOORE 2020-20 "YEW GREEN" (PANTONE MATCH 382C)
  - (F-4) PRE-FINISHED METAL CAP FLASHING  
COLOUR: VICWEST #56161 "CAMBRIDGE WHITE"
  - (F-5) PRE-FINISHED VERTICAL BENT SHEET METAL FEATURE BAND  
PROFILE: 7/8" CORRUGA ED  
COLOUR: VICWEST #56161 "CAMBRIDGE WHITE"
  - (F-6) PRE-FINISHED METAL SIDING w/ MATCHING TRIM, INSTALLED HORIZONTALLY  
PROFILE: 7/8" CORRUGA ED  
COLOUR: VICWEST #1682 "REGENT GREY"
  - (F-7) VERTICAL & HORIZONTAL PRE-FINISHED METAL TRIM  
PROFILE: VICWEST PARTITION MOLDING #421  
COLOUR: VICWEST #1682 "REGENT GREY"
  - (F-8) VICWEST VERTICAL METAL SIDING  
PROFILE: C-ROSSER  
COLOUR: VICWEST CAMBRIDGE WHITE #16161
  - (F-8a) VICWEST VERTICAL METAL SIDING  
PROFILE: C-ROSSER  
COLOUR: VICWEST #1682 "REGENT GREY"
  - (F-9) CLEAR ANODIZED ALUMINUM FRAMES c/w CLEAR GLAZING  
(SEE WINDOW SCHEDULE)
  - (F-10) CLEAR ANODIZED ALUMINUM BI-PARTING DOOR c/w CLEAR GLAZING  
(SEE DOOR SCHEDULE)
  - (F-11) CLEAR ANODIZED ALUMINUM DOOR c/w CLEAR GLAZING (SEE DOOR SCHEDULE)
  - (F-12) CLEAR ANODIZED ALUMINUM COLUMN COVER
  - (F-13) HOLLOW METAL DOOR c/w HOLLOW METAL FRAME (SEE DOOR SCHEDULE)  
COLOUR: TO MATCH VICWEST #56161 "CAMBRIDGE WHITE"
  - (F-14) INSULATED GARBAGE COMPACTOR ACCESS DOOR c/w PAINTED FINISH  
(SEE DOOR SCHEDULE)  
COLOUR: TO MATCH VICWEST #56161 "CAMBRIDGE WHITE"
  - (F-15) PRE-FINISHED INSULATED OVERHEAD SECTIONAL DOOR, SEAL AND BUMPERS  
(SEE DOOR SCHEDULE)
  - (F-16) STEEL STAIR LANDING, AND RAIL c/w OPEN GRATE TREADS  
ALL TO BE HOT DIPPED GALVANIZED (SEE STRUCTURAL).  
GENERAL CONTRACTOR IS TO SUBMIT SHOP DRAWINGS FOR APPROVAL
  - (F-17) ROOF PARAPET MOUNTED RETRACTABLE FASCIA LIGHTING FIXTURE  
(SEE ELECTRICAL, REFLECTED CEILING PLAN AND ROOF PLAN)
  - (F-18) EXTERIOR WALL MOUNTED FLOOD LIGHT FIXTURE (SEE ELECTRICAL). PAINTED.  
COLOUR: DARK GREY
  - (F-19) "STORE HOURS" SIGN (SEE DECOR DRAWINGS)
  - (F-20) ALUMINUM "FRESH CO." NON-ILLUMINATED INDIVIDUAL LETTERS BY SIGNAGE CONTRACTOR. COLOUR: BLACK
  - (F-21) ALUMINUM "LOWERING FOOD PRICES" NON-ILLUMINATED INDIVIDUAL LETTERS BY SIGNAGE CONTRACTOR. COLOUR: BLACK
  - (F-22) CONTRACTOR TO PROVIDE 1/2" EXTERIOR GRADE PLYWOOD BACKING BEHIND SIGNAGE.
  - (F-23) ROOF SCUPPER
  - (F-24) CONCRETE FOUNDATION WALL (SEE STRUCTURAL).  
COLOUR: NATURAL CONCRETE COLOUR.
  - (F-25) POURED CONCRETE SIDEWALK
  - (F-26) STEEL BOLLARD c/w CONCRETE FILL  
COLOUR: YELLOW
  - (F-27) DOCK LEVELLER
  - (F-28) WINDOW FILM AND "ENTRANCE", "EXIT" LETTERING BY SIGNAGE CONTRACTOR
  - (F-29) "WE PRICE MATCH" BANNER, SUPPLIED AND INSTALLED BY SIGNAGE CONTRACTOR
  - (F-30) SPANDREL GLAZING  
COLOUR: CHALK COAT 300, 3/070 WARM GREY C/W CLEAR ANODIZED ALUMINUM  
THERMALLY BROKEN FRAMES  
(GENERAL CONTRACTOR TO SUBMIT SAMPLE TO THE DESIGNER FOR APPROVAL PRIOR TO FABRICATION)

THIS DRAWING AS AN INSTRUMENT OF SERVICE, IS PROVIDED BY AND TO THE PROPERTY OF THE CLIENT. THE CONTRACTOR MUST VERIFY AND ACCEPT RESPONSIBILITY FOR ALL DIMENSIONS AND CONDITIONS ON SITE AND MUST NOTIFY THE DESIGNER OF ANY VARIATIONS FROM THE SUPPLIED INFORMATION. THE DRAWING IS NOT TO BE SCALED. GENERAL CONTRACTOR IS NOT RESPONSIBLE FOR THE ACCURACY OF SURVEY, STRUCTURAL, MECHANICAL, ELECTRICAL AND OTHER CONSULTANT INFORMATION SHOWN IN THIS DRAWING. REFER TO THE APPROPRIATE CONSULTANT DRAWINGS BEFORE PROCEEDING WITH THE WORK. CONSTRUCTION MUST CONFORM TO ALL APPLICABLE CODES AND REQUIREMENTS OF AUTHORITY-HAVING JURISDICTION. THE CONTRACTOR WORKING FROM DRAWINGS NOT SPECIFICALLY MARKED FOR CONSTRUCTION MUST ASSUME FULL RESPONSIBILITY AND BEAR COSTS FOR ANY CORRECTIONS OR DAMAGES RESULTING FROM HIS WORK.

REV	DESCRIPTION	DATE
3	UPDATE TO SPA COMMENTS	2022-02-01
4	UPDATE TO SPA COMMENTS	2022-01-25
5	ISSUED FOR SPA	2022-10-25
2	ADD SPANDREL GLAZING UNDER FRESHCO SIGN @ EAST & WEST ELEVATION	2022-10-18
1	ADD EXTERIOR DOOR TO SOUTH ELEVATION	2022-09-30
0	NEW EXTERIOR ELEVATIONS AS PER LATEST SITE PLAN DATED 2022-08-09	2022-08-25

**APPROVED**  
By wildmange at 12:53 pm, May 23, 2022

*G Wildman*

**GERALDINE WILDMAN**  
ACTING MANAGER, DEVELOPMENT REVIEW EAST  
PLANNING, REAL ESTATE & ECONOMIC DEVELOPMENT  
DEPARTMENT, CITY OF OTTAWA



DRAWN	CHECKED	APPROVED
MS	MS	MS
DATE (MM/DD/YY)	SCALE	JOB NUMBER
08/23/21	As indicated	21032
DRAWING NUMBER	REGION NUMBER	
EE1	R5	