

FRONT ELEVATION - NORTH

- ▼ T/O BLADE ±28'-0"
- ▼ T/O PARAPET ±18'-0"
- ▲ U/S CANOPY ±10'-0"
- ▼ T/O CONCRETE SLAB 0'-0"

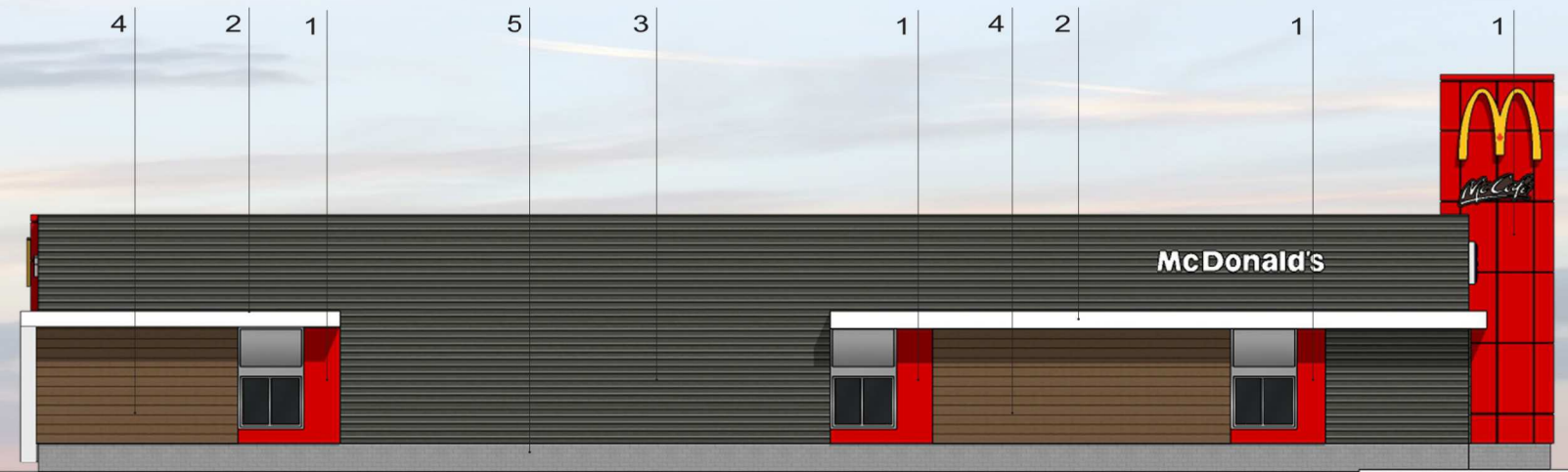


RIGHT SIDE ELEVATION - WEST



REAR ELEVATION - SOUTH

- ▼ T/O BLADE ±28'-0"
- ▼ T/O PARAPET ±18'-0"
- ▲ U/S CANOPY ±10'-0"
- ▼ T/O CONCRETE SLAB 0'-0"



LEFT SIDE ELEVATION - EAST

**LEGEND**

1. CLADDING METAL PANEL , ALPOLIC , "RON RED"
2. CLADDING METAL PANEL , ALPOLIC , "BONE WHITE"
3. VICWEST METAL SIDING , CORRUGATED , " DEEP GREY "
4. LAP SIDING , JAMES HARDIE , " ANCHOR BROWN "
5. MASONRY , RICHVALE , " ONYX "
6. SPANDREL PANEL
7. BRICK RIBBON , RICHVALE YORK , " WHITE "



*G Wildman*

**GERALDINE WILDMAN**  
**ACTING MANAGER, DEVELOPMENT REVIEW EAST**  
**PLANNING, REAL ESTATE & ECONOMIC DEVELOPMENT**  
**DEPARTMENT, CITY OF OTTAWA**

**APPROVED**  
 By wildmange at 12:54 pm, May 23, 2022

