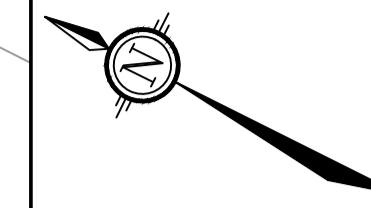


MORGAN'S GRANT SWMF

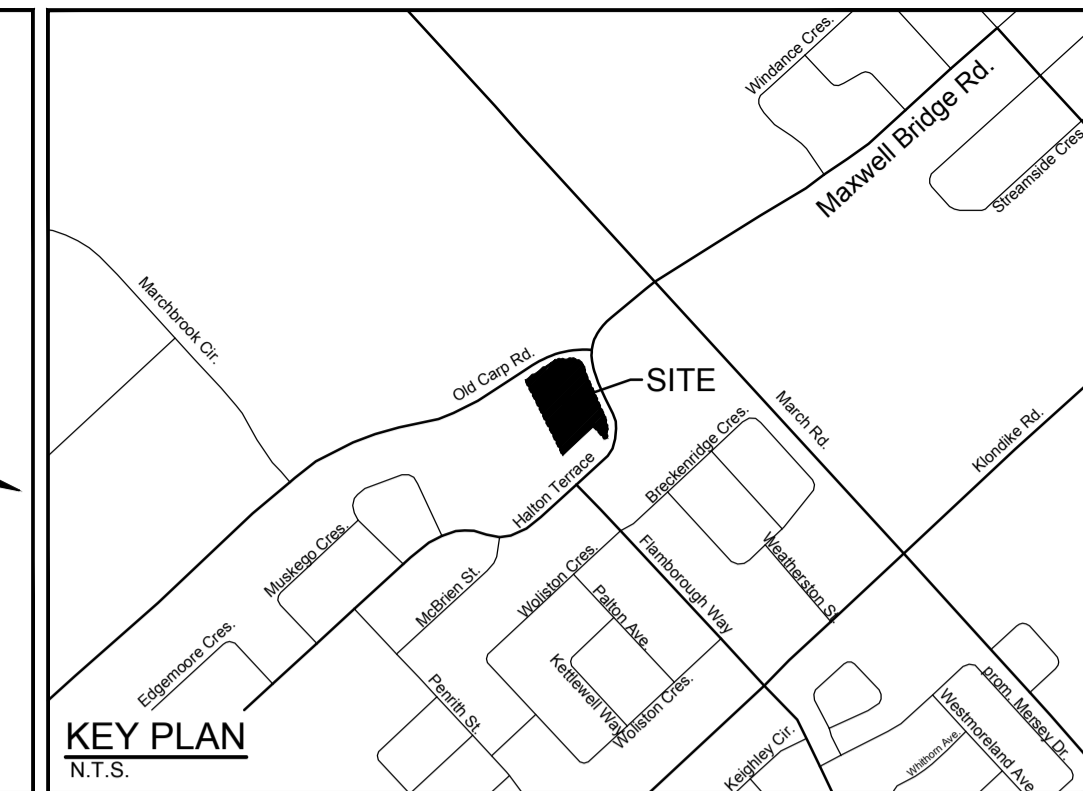
MORGAN'S GRANT SWMF



NORTH

KEY PLAN

N.T.S.



LEGEND

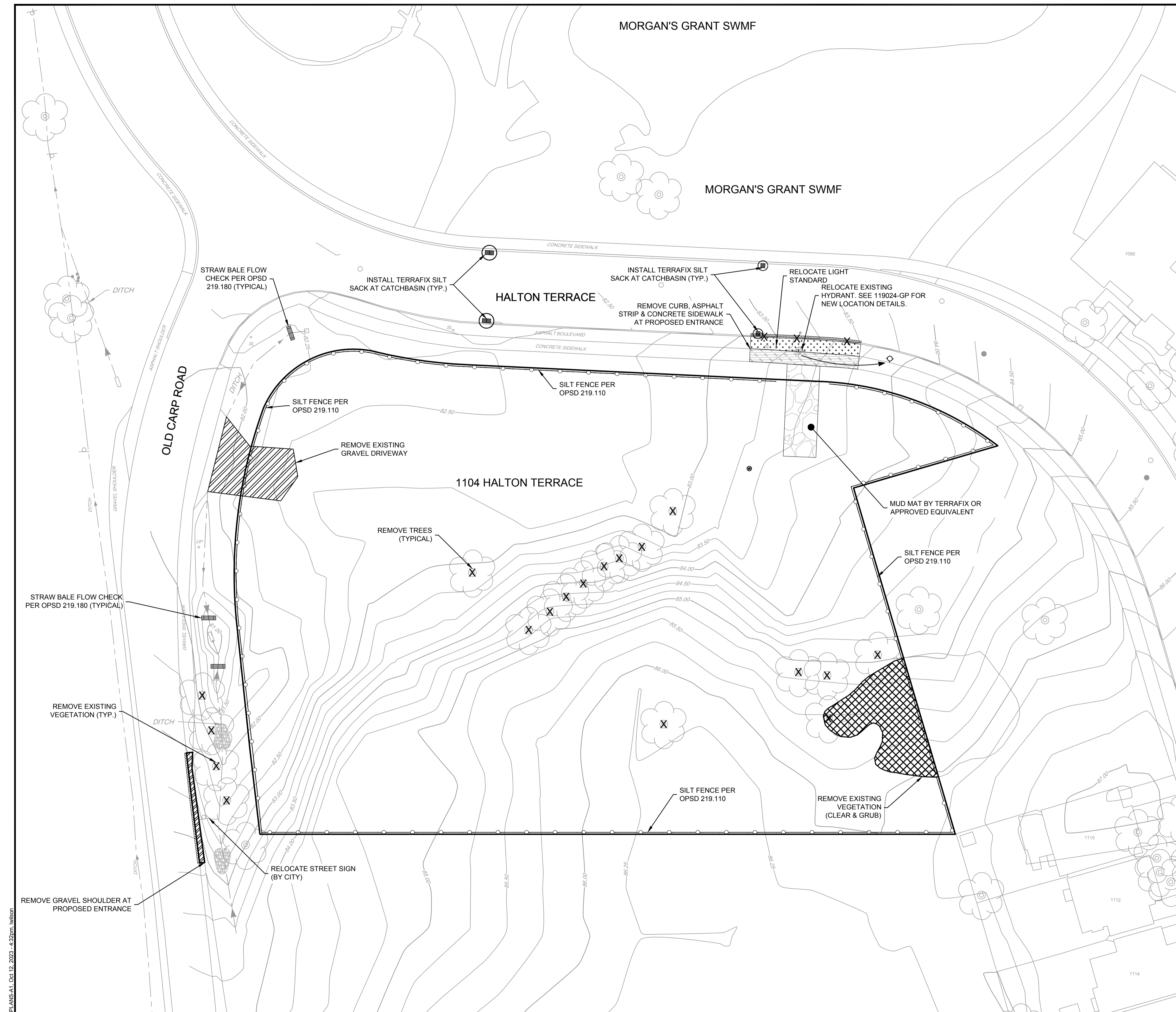
- CLEARING AND GRUBBING
- GRAVEL SHOULDER & DRIVEWAY REMOVAL
- REMOVE ASPHALT
- REMOVALS
- SILT FENCE PER OPSD 219.110
- STRAW BALE FLOW CHECK PER OPSD 219.180
- DRY GRIND EXISTING ASPHALT, AVERAGE DEPTH 50mm AND 0.3m FROM BACK OF FULL DEPTH ASPHALT
- REMOVE CONCRETE SIDEWALK
- EXISTING CONTOUR AND ELEVATION
- MUD MATS
- SILT SACK INSTALLED AT EXISTING CATCHBASIN

EROSION AND SEDIMENT CONTROL NOTES :

- ALL EROSION AND SEDIMENT CONTROLS ARE TO BE INSTALLED TO THE SATISFACTION OF THE ENGINEER, THE MUNICIPALITY AND THE CONSERVATION AUTHORITY. THEY ARE TO BE APPROPRIATE TO THE SITE CONDITIONS, PRIOR TO UNDERTAKING ANY SITE ALTERATIONS (FILLING, GRADING, REMOVAL OF VEGETATION, ETC.) AND DURING ALL PHASES OF SITE PREPARATION AND CONSTRUCTION. THESE PRACTICES ARE TO BE IMPLEMENTED IN ACCORDANCE WITH THE CURRENT BEST MANAGEMENT PRACTICES FOR EROSION AND SEDIMENT CONTROL AND SHOULD INCLUDE AS A MINIMUM THOSE MEASURES INDICATED ON THE PLAN.
- TO PREVENT SURFACE EROSION FROM ENTERING THE DITCH OR STORM SYSTEM DURING CONSTRUCTION, SILT SACKS WILL BE PLACED UNDER GRATES OF ALL PROPOSED AND EXISTING CATCHBASINS AND STRUCTURES. A LIGHT DUTY SILT FENCE BARRIER WILL ALSO BE INSTALLED IN SELECTED LOCATIONS SHOWN ON THIS PLAN, AND STRAW BALE BARRIERS WILL BE INSTALLED WITHIN THE OUTLET DITCHES. THESE CONTROL MEASURES WILL REMAIN IN PLACE UNTIL VEGETATION HAS BEEN ESTABLISHED AND CONSTRUCTION COMPLETE.
- THE SEDIMENT CONTROL MEASURES SHALL ONLY BE REMOVED WHEN, IN THE OPINION OF THE ENGINEER, THE MEASURES ARE NO LONGER REQUIRED. NO CONTROL MEASURES MAY BE PERMANENTLY REMOVED WITHOUT PRIOR AUTHORIZATION FROM THE ENGINEER.
- THE CONTRACTOR SHALL IMMEDIATELY REPORT TO THE ENGINEER ANY ACCIDENTAL DISCHARGES OF SEDIMENT MATERIAL INTO ANY DITCH OR STORM SEWER SYSTEM. APPROPRIATE RESPONSE MEASURES, INCLUDING ANY REPAIRS TO EXISTING CONTROL MEASURES OR THE IMPLEMENTATION OF ADDITIONAL CONTROL MEASURES, SHALL BE CARRIED OUT BY THE CONTRACTOR WITHOUT DELAY.
- THE CONTRACTOR ACKNOWLEDGES THAT FAILURE TO IMPLEMENT EROSION AND SEDIMENT CONTROL MEASURES MAY BE SUBJECT TO PENALTIES IMPOSED BY ANY APPLICABLE REGULATORY AGENCY.
- THE CONTRACTOR SHALL ENSURE PROPER DUST CONTROL IS PROVIDED WITH THE APPLICATION OF WATER (AND IF REQUIRED, CALCIUM CHLORIDE) DURING DRY PERIODS.

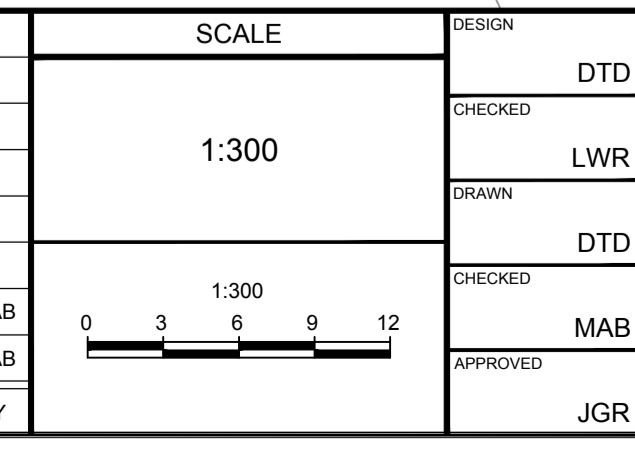
REMOVALS NOTES :

- ALL HYDRANTS, VALVES AND OTHER APPURTENANCES TO BE REMOVED SHALL BE SALVAGED AND DELIVERED TO CITY OF OTTAWA MAINTENANCE YARD AT CLYDE AVENUE.
- THE CONTRACTOR SHALL PROTECT ALL SURVEY MONUMENTS.
- REMOVAL OF ALL ABOVE GROUND TRAFFIC PLANT AND STREETLIGHTING TO BE DONE BY OTHERS. CONTRACTOR SHALL PROTECT AND MAINTAIN EXISTING STREETLIGHTING, HYDRO POLES AND OVERHEAD LINES DURING CONSTRUCTION.
- ALL BELL AND HYDRO OTTAWA MAINTENANCE HOLE ADJUSTMENTS SHALL BE PERFORMED BY AN APPROVED CONTRACTOR ONLY.
- ALL TOPSOIL AND ANY SOFT, WET OR DELETERIOUS MATERIAL SHALL BE REMOVED FROM IMPROVED AREAS UNLESS OTHERWISE DIRECTED BY THE ENGINEER.
- FORESTRY TO BE CONTACTED PRIOR TO ANY SELECTIVE PRUNING OR REMOVALS WITHIN THE AREAS OF TRESS SURROUNDING THE TRANS CANADA TRAIL AND TREES THAT ARE TO REMAIN ARE TO HAVE PROPER TREE PROTECTION FENCING.



NOTE:
THE POSITION OF ALL POLE LINES, CONDUITS, WATERMANS, SEWERS AND OTHER UNDERGROUND AND OVERGROUND UTILITIES AND STRUCTURES IS NOT NECESSARILY SHOWN ON THE CONTRACT DRAWINGS, AND WHERE SHOWN, THE ACCURACY OF THE POSITION OF SUCH UTILITIES AND STRUCTURES IS NOT GUARANTEED. BEFORE STARTING WORK, DETERMINE THE EXACT LOCATION OF ALL SUCH UTILITIES AND STRUCTURES AND ASSUME ALL LIABILITY FOR DAMAGE TO THEM.

| No. | REVISION | DATE | BY |
|-----|-----------------|-----------|-----|
| 2. | CITY SUBMISSION | NOV 3/23 | MAB |
| 1. | CITY SUBMISSION | OCT 19/21 | MAB |



DESIGN

DTD

CHECKED LWR

DRAWN DTD

CHECKED MAB

APPROVED JGR

FOR REVIEW ONLY

NOVATECH

Engineers, Planners & Landscape Architects
Suite 200, 240 Michael Cowpland Drive
Ottawa, Ontario, Canada K2M 1P6

Telephone (613) 254-9643
Facsimile (613) 254-5867
Website www.novatech-eng.com

CITY OF OTTAWA
1104 HALTON TERRACE

PROJECT No. 119024

REV # 2

DRAWING No. 119024-ESC

SITE REMOVALS, EROSION AND SEDIMENT CONTROL PLAN

M:\2019\119024\CAD\Design\119024-ESC.dwg, PLANS-A1, Oct 12, 2023, 4:32pm, Wilson

PLAN #18654 D07-12-21-0186