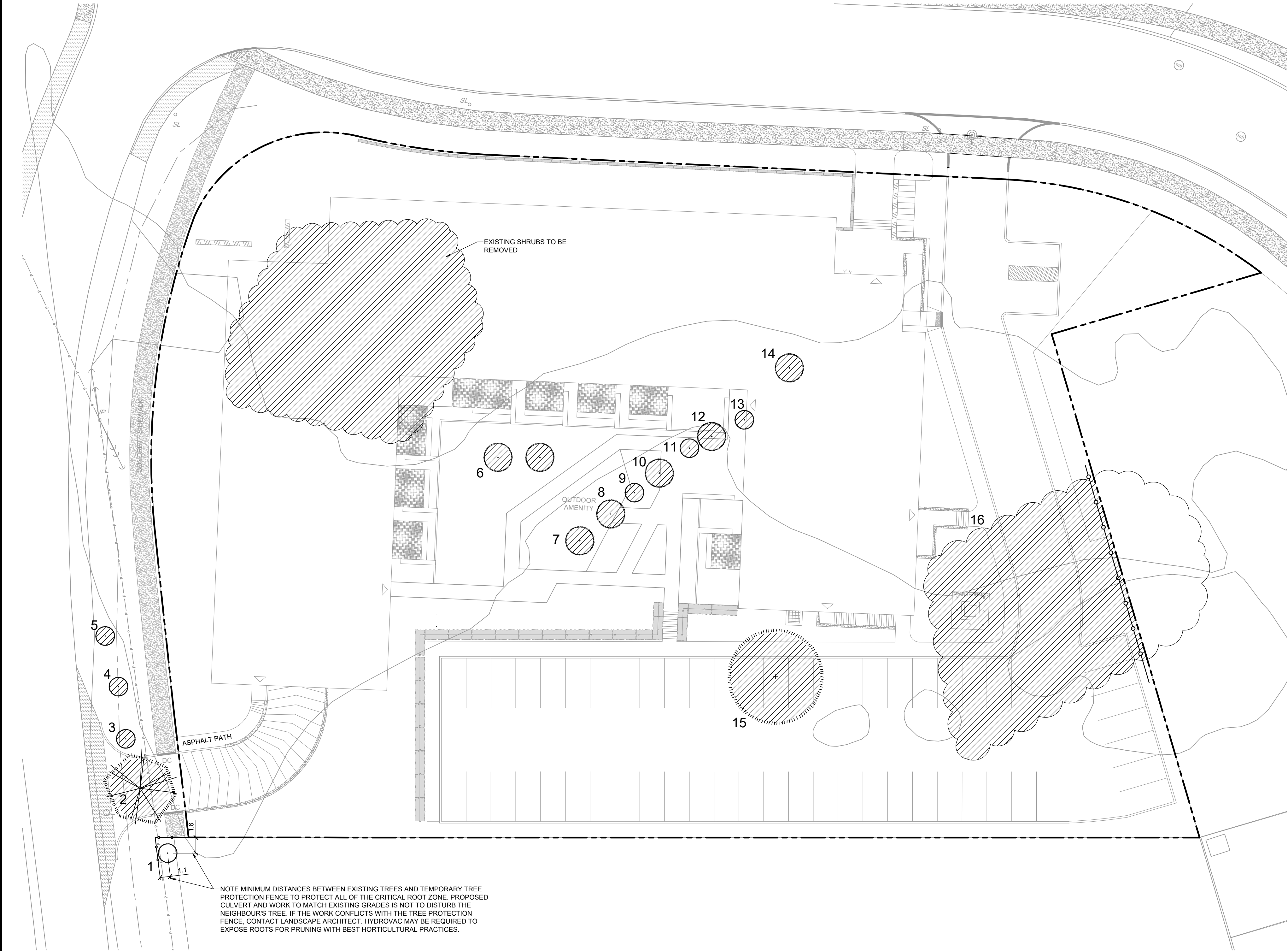
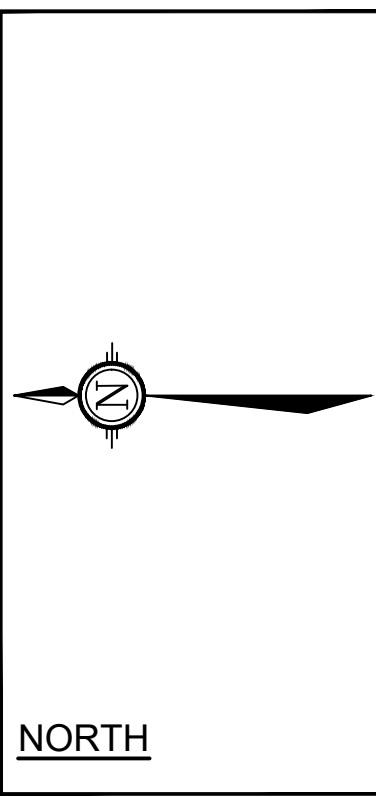


M:\2018\119024\CAD\Landscape\1-Plan\119024_TCR.dwg, TCR Aug 13, 2025 - 5:10pm, m1eiat



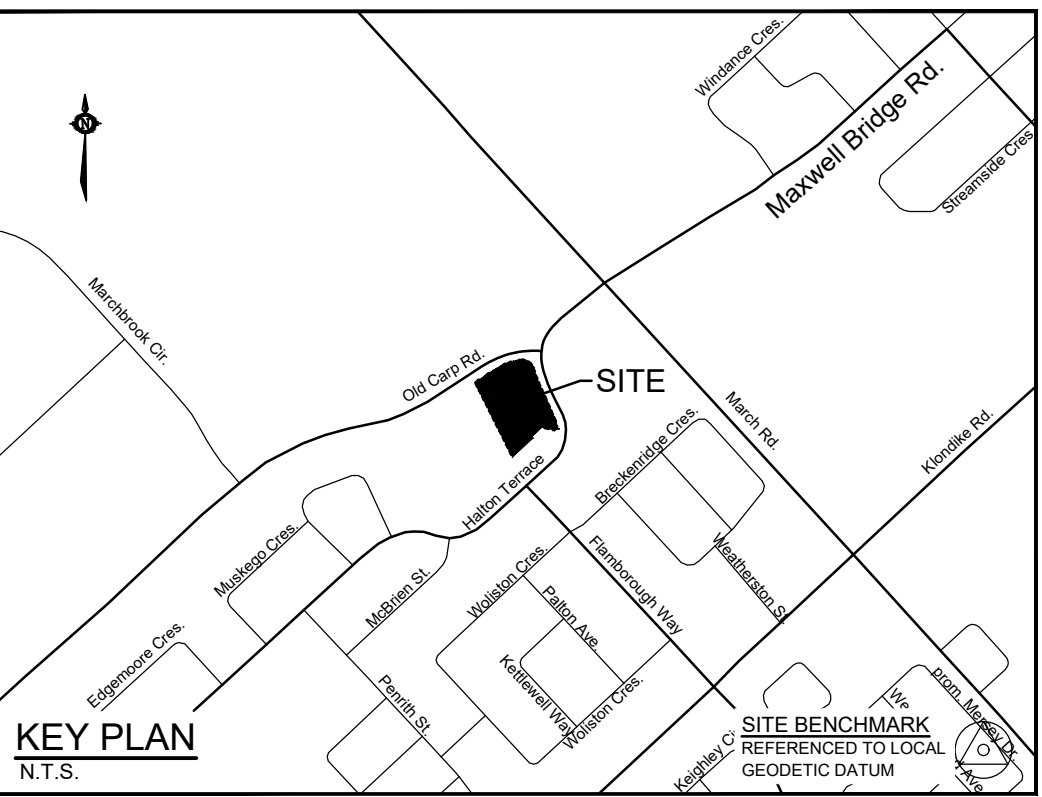
No.	Botanical Name	Common Name	DBH (cm)	CRZ (m)	Condition	Owner	Remarks	Recomm.
1	<i>Syringa vulgaris</i>	Common Lilac	0.10	1.00	G	City	Multi-stem (20+) with no clear dominant stem, shrubby appearance.	PROTECT
2	<i>Picea pungens</i> var. <i>glauca</i>	Colorado Blue Spruce	0.35	3.50	F	City	Topped by Hydro due to conflict with overhead wires.	Conflict
3	DEAD				-	Private	Dead tree with Buckthorn understorey.	Remove
4	DEAD				-	Private	Dead tree with Buckthorn understorey.	Remove
5	DEAD				-	Private	Dead tree with Buckthorn understorey.	Remove
6	<i>Acer negundo</i>	Manitoba Maple	0.15	1.50	F	Private	Multi-stem, extensive suckering at base.	Conflict
6A	<i>Acer negundo</i>	Manitoba Maple	0.12	1.20	P	Private	Multi-stem, extensive suckering at base.	Conflict
7	<i>Acer negundo</i>	Manitoba Maple	0.15	1.50	P	Private	Multi-stem, extensive suckering at base, defoliated.	Conflict
8	<i>Populus balsamifera</i>	Balsam Poplar	0.15	1.50	P	Private	Defoliated, multi-stem with codominant leaders.	Conflict
9	DEAD				-	Private	Dead tree with Buckthorn understorey.	Remove

10	<i>Populus balsamifera</i>	Balsam Poplar	0.15	1.50	F	Private	Defoliated, multi-stem with codominant leaders.	Conflict
11	DEAD				-	Private	Dead tree with Buckthorn understorey.	Remove
12	<i>Populus balsamifera</i>	Balsam Poplar	0.15	1.50	F	Private	Defoliated, multi-stem with codominant leaders.	Conflict
13	DEAD				-	Private	Dead tree with Buckthorn understorey.	Remove
14	<i>Populus balsamifera</i>	Balsam Poplar	0.12	1.20	G	Private	Insect galls observed in branches.	Conflict
15	<i>Populus balsamifera</i>	Balsam Poplar	0.50	5.00	F	Private	Signs of defoliation, multi-stem at base.	Conflict
Number 16 consists of approximately:								
x10	<i>Populus balsamifera</i>	Balsam Poplar	~0.10	~1.00	G	Private		Conflict
x3	<i>Populus balsamifera</i>	Balsam Poplar	~0.25	~2.50	G	Private		Conflict
x2	<i>Populus balsamifera</i>	Balsam Poplar	~0.5	~5.00	G	Private		Conflict
x4	<i>Thuja occidentalis</i>	Eastern White Cedar	~0.15	~1.50	G	Private		Conflict



LEGEND

- EXISTING TREE TO REMAIN, SYMBOL SIZE REFLECTS CRZ
- EXISTING TREE TO REMOVE, SYMBOL SIZE REFLECTS CRZ
- PROPERTY LINE
- TREE PROTECTION FENCE

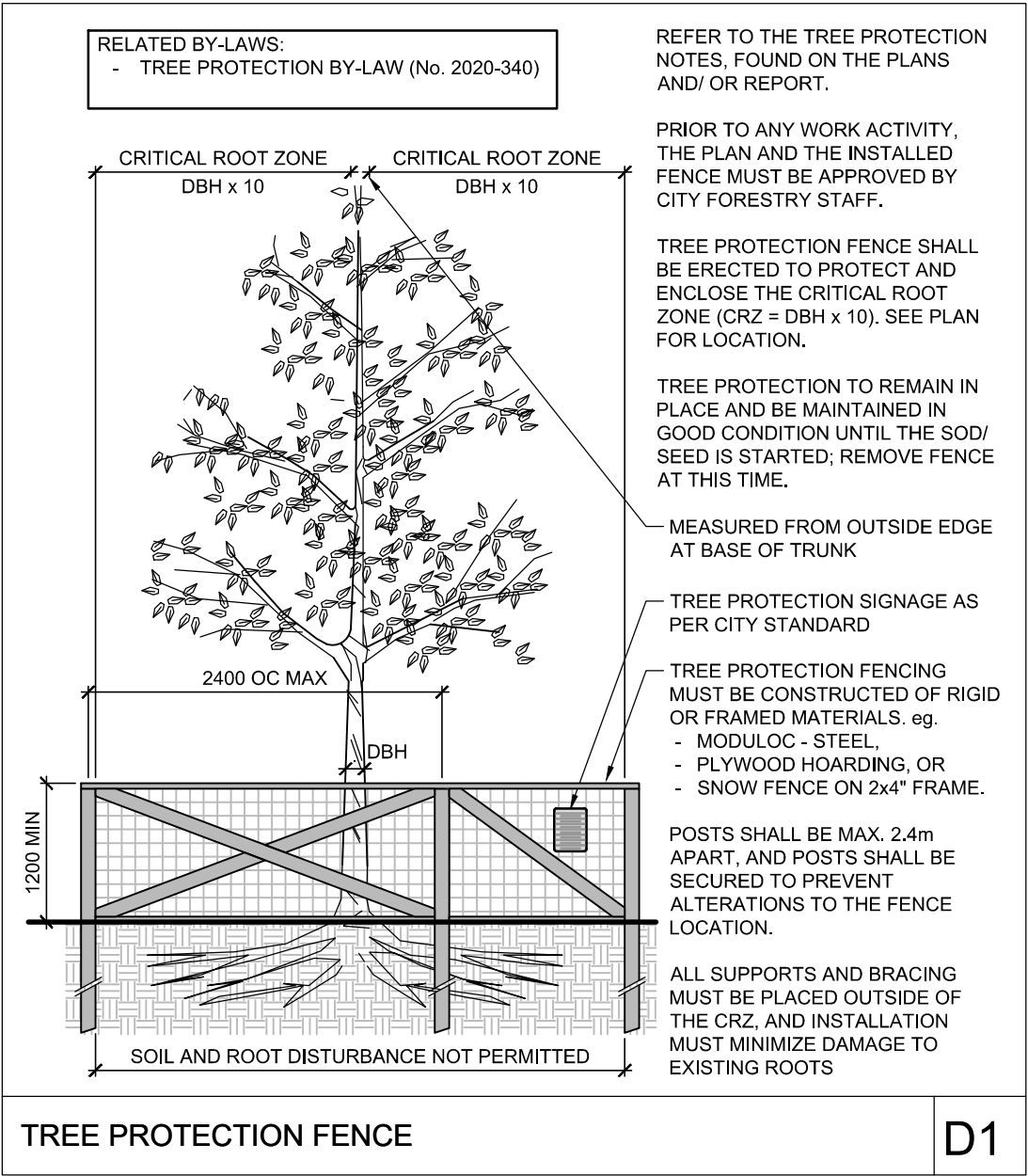


GENERAL

- Read and interpret this drawing/ drawing set in conjunction with all the contract details and specifications, including related civil, utility, structural, architectural, mechanical, electrical, environmental, geotechnical, and survey information.
- The Contractor is to determine the exact location, size, material, and elevation of all existing utilities prior to commencing construction. Protect and assume responsibility for all existing utilities regardless of being shown on the drawings.
- It is essential to use the plans and details in conjunction with the specifications and notes.
- Do not scale drawings. Work to dimensions only.
- Protect all existing and retained vegetation for the duration of construction according to the contract details and specifications.
- Reinstate all areas and items damaged or disturbed, beyond the Limit of Work, because of construction activities, including but not limited to construction staging areas, haul roads, stockpile areas, etc. to the satisfaction of the Consultant. Unless otherwise noted, Contractor is to reinstate all areas to pre-construction condition or better to the satisfaction of the Contract Administrator.

TREE PROTECTION

- Implement the following protection measures for retained trees, both on site and adjacent sites, prior to any work activity, including tree removal. Maintain tree protection fence in place and in good condition for the duration of site works:
- The Landscape Architect or Certified Arborist is to determine the location of the tree protection fencing and detail it on any associated plans for the site (e.g. tree conservation report, tree disclosure report, etc.).
 - Under the guidance of a Landscape Architect or Certified Arborist, erect a fence at the critical root zone (CRZ) of trees. Diameter at breast height (DBH) is the trunk diameter measured at 1.3m height on the tree trunk. The CRZ is calculated as DBH x 10. Refer to the Tree Protection Fence detail.
 - Refer to the Tree Protection Plan for fence location. City Forestry Staff are to approve both the plan and the installed fence prior to work commencement.
 - Do not place any material or equipment within 2m of the CRZ of any tree, including outcrops.
 - Do not attach any signs, notices, or posters to any tree.
 - Do not disturb, raise, or lower the existing grade within the CRZ without approval.
 - Only tunnel or bore when digging within the CRZ of a tree. Hand work only where required within the CRZ; absolutely no machinery permitted.
 - Do not damage the root system, trunk, or branches, or any tree.
 - Do not extend hard surface or significantly change landscaping.
 - Ensure that exhaust fumes from all equipment are directed away from any tree canopy.
 - When trees marked for removal overlap with the CRZ of trees marked for preservation: cut roots at the edge of the CRZ and grind down stumps after tree removals, do not pull out stumps. Ensure there is not root pulling or disturbance of the ground within the CRZ.
 - Prior to work taking place, notify and consult the Landscape Architect and City Forestry Staff if roots must be cut. Roots 20mm or larger should be cut at right angles with clean, sharp horticultural tools without tearing, crushing, or pulling. Refer to City of Ottawa Specification S.P. F-8011 Tree Protection, Excavation of Root Zone.
 - If damaged or objectionable branches are observed, consult the Landscape Architect, before any work is conducted. Do not prune leaders. Do not prune more than 1/4 of crown.
 - The Landscape Architect is to prescribe mitigation measures if the protected fenced area must be reduced to facilitate construction. Measures may include the placement of plywood, wood chips, or steel plating over the roots for protection. City Forestry Staff are to approve said measures prior to fence movement.
 - City of Ottawa By-law: Protects municipal trees and municipal natural areas in the City of Ottawa and trees on private property in the urban area of the City of Ottawa (2020-340).



TREE PROTECTION FENCE

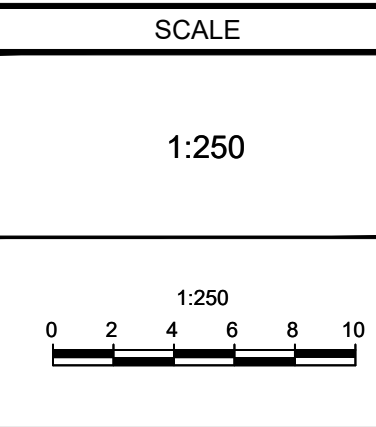
D1

Legend			
G	Good	Conflict	Remove due to conflict with construction.
F	Fair	Remove	Remove due to tree health or invasive status.
P	Poor	PROTECT	Protect as per detail D1 and related notes.

NOTE:
THE POSITION OF ALL POLE LINES, CONDUITS, WATERMAINS, SEWERS AND OTHER UNDERGROUND AND OVERGROUND UTILITIES AND STRUCTURES IS NOT NECESSARILY SHOWN ON THE CONTRACT DRAWINGS, AND WHERE SHOWN, THE ACCURACY OF THE POSITION OF SUCH UTILITIES AND STRUCTURES IS NOT GUARANTEED. BEFORE STARTING WORK, DETERMINE THE EXACT LOCATION OF ALL SUCH UTILITIES AND STRUCTURES AND ASSUME ALL LIABILITY FOR DAMAGE TO THEM.

NOT FOR
CONSTRUCTION

No.	REVISION	DATE	BY
5.	ISSUED FOR CITY SUBMISSION	AUG 14/25	RGJ
4.	ISSUED FOR CITY SUBMISSION	JUL 18/25	RGJ
3.	ISSUED FOR CITY SUBMISSION	NOV 9/23	RGJ
2.	ISSUED FOR SITE PLAN APPLICATION	OCT 18/21	RGJ
1.	ISSUED FOR CLIENT REVIEW	OCT 12/21	RGJ



DESIGN
JK
CHECKED
RGJ
DRAWN
JK
CHECKED
RGJ
APPROVED
RGJ

FOR REVIEW ONLY



NOVATECH
Engineers, Planners & Landscape Architects
Suite 200, 240 Michael Cowpland Drive
Ottawa, Ontario, Canada K2M 1P6
Telephone (613) 254-9643
Facsimile (613) 254-5867
Website www.novatech-eng.com

LOCATION
CITY OF OTTAWA
1104 HALTON TERRACE

DRAWING NAME
TREE CONSERVATION REPORT

PROJECT No.
119024
REV
REV # 5
DRAWING No.
119024-TCR

PLANA1.DWG - 841mmx568mm
#18654

D07-12-21-0186