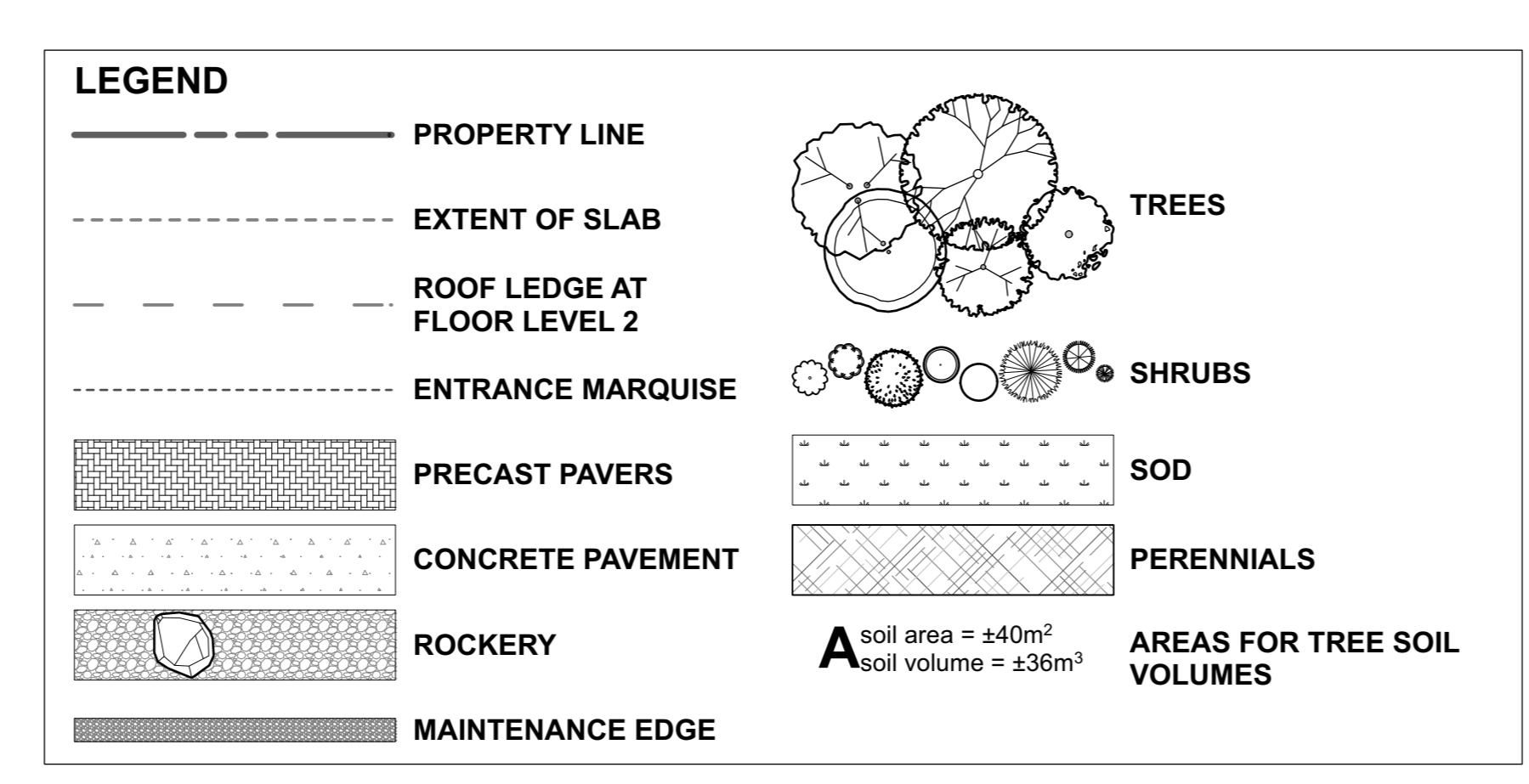


ID	Qty	Botanical Name	Common Name	Sched. Size	Remarks
Plant List					
TREES					
AgRH	3	Amelanchier x grandiflora 'Robin Hill'	Robin Hill Serviceberry	45mm caliper	WB, Staked
BnFV	3	Betula nigra 'Little King'	Fox Valley River Birch	40mm caliper	WB, Staked
CcgC	4	Crataegus crus-galli inermis 'Cruzam'	Thornless Crusader Cockspur Hawthorn	45mm caliper	WB, Staked
MHG	3	Malus 'Harvest Gold'	Harvest Gold Crab Apple	50mm caliper	WB, Staked
MsR	2	Malus sargentii 'Rosea'	Pink Flowering Crabapple	45mm caliper	WB, Staked
SHRUBS					
DI	10	Diervilla lonicera	Dwarf Bush-honeysuckle	50cm ht.	Potted
Hq	14	Hydrangea quercifolia	Oakleaf Hydrangea	2 gallon pot	Potted
JvSR	29	Juniperus virginiana 'Skyrocket'	Skyrocket Juniper	150cm ht.	Potted
Lb	7	Lindera benzoin	Spicebush	50cm ht.	Potted
Pmm	1	Pinus mugo mughus	Mugho Pine	75cm spd	2m o.c.
RaLG	26	Rhus aromatica 'Gro-Low'	Gro-Low Fragrant Sumac	40cm ht.	Potted
Spa	2	Spiraea alba	Meadowsweet	50cm ht.	Bare Root
Sa	11	Symphocarpus albus	Common Snowberry	100cm ht.	Potted
ToH	2	Thuja occidentalis 'Holmstrup'	Holmstrup Eastern Arborvitae	100cm ht.	Potted
PERENNIALS					
PvA	70	PvA	Sun / Shade: American Coral Bells, Blue Woodland Phlox, False Solomon's Seal, Canada Mayflower, Woodland Sunflower, Spotted Geranium		
PvB	16	PvB	Shade Ornamental Grasses: Bottlebrush Grass, Oak Sedge		
PvC	69	PvC	Full Shade: Ferns, Bellwort, Solomon's Seal, False Solomon's Seal, Canada Mayflower, Woodland Sunflower		
PvD	38	PvD	Sun Ornamental Grasses: Switch Grass, June Grass, Prairie Dropseed, Goldenrod		



Soil Volume Area, Tree Quantity and Size (soil to depth of 1m in areas A & B, all other areas to depth of 0.9m)	Tree Quantity	OTTAWA Target Soil Volume (m³)	Design Soil Volume	Soil Adequacy percentage
AREA A - 2 ornamental trees, 2 small ornamental trees (15cm DBH)* plant bed (30 sq m x 1 metre deep)	4	29.2	30.0	102.74%
AREA B - 2 ornamental trees, 2 small ornamental trees (15cm DBH)* plant bed (26 sq m x 1 metre deep)	4	29.2	26.0	89.04%
AREA C - 3 ornamental trees plant bed (29.5 sq m x 1 metre deep)	4	32.6	29.5	90.49%
AREA D - 2 ornamental trees plant bed (17.4 sq m x 1 metre deep)	2	18.0	17.4	96.67%
AREA E - 1 small ornamental tree (10cm DBH)* plant bed (4 sq m x 1.1 metre deep)	1	6.0	4.4	73.33%
AREA F - 1 small ornamental tree (15cm DBH)* plant bed (7.2 sq m x 0.9 metre deep)	1	8.0	6.5	81.00%
AREA G - 1 small ornamental tree (10cm DBH)* plant bed (5.3 sq m x 1 metre deep)	1	6.0	5.3	88.33%

AREAS WHERE SITE CONSTRAINTS (such as parking lot islands, adjacent hard surface areas), 0.9 TO 1.2 METRE DEPTH IMPORTED TOPSOIL (average depth of 1000mm), AREAS WITHIN OR ADJACENT TO LARGER SOFT LANDSCAPE AREAS (such as wide boulevards, lawns, etc), 0.4 METRE AVERAGE DEPTH OF IMPORTED TOPSOIL OVER APPROVED EXISTING SUBSOIL. ADDITIONAL IMPORTED TOPSOIL OR APPROVED SUBSOIL TO BE ADDED WHERE SUBGRADE BELOW THE 400mm IMPORTED TOPSOIL IS NOT CONDUVIVE TO PLANT GROWTH TO A MAXIMUM DEPTH OF 1 METRE.

Ruhland & Associates Ltd
landscape architecture • urban design • site planning
Ph 613-224-4744 Fx 613-224-1331 info@rala.ca www.rala.ca

6			
5	City-requested SPC revisions	2023 12 13	
4	Site plan Control resubmission	2023 11 20	
3	Site plan Control resubmission	2022 07 19	
2	Re-issued for Site plan Control	2022 04 22	
1	Issued for Site plan Control	2021 10 26	

DESIGNED BY / CONCEIVER: M RUHLAND
CHECKED BY / VERIFY: M RUHLAND
DRAWN BY / DESIGNED: T FROST

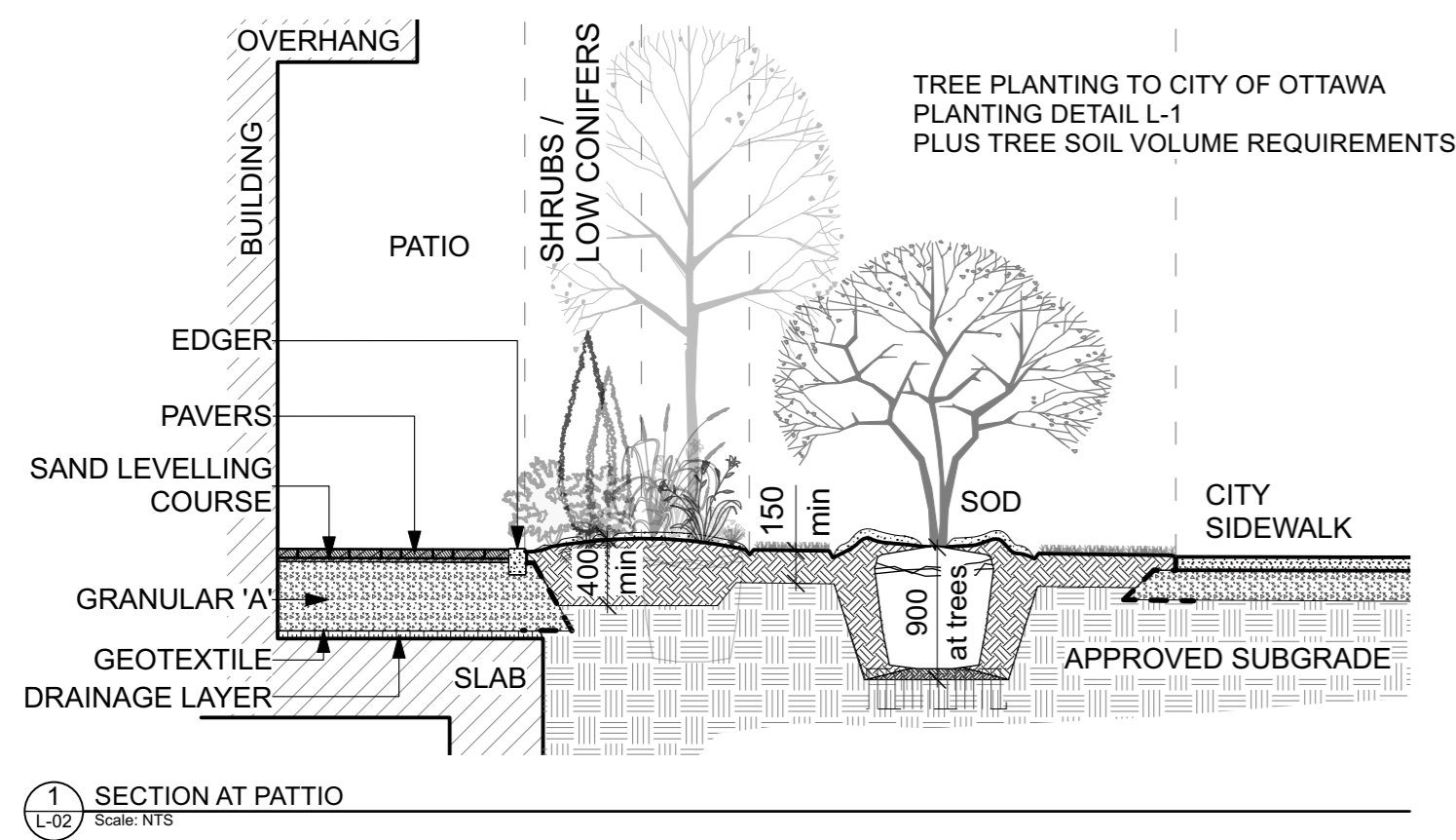
SCALE: 1:100
Scale: 1:100
0 1 2 3 4 5 6 m

ARCHITECT: CONSULTANT: M RUHLAND
CONSULTANT: CONSULTANT: M RUHLAND

PROJECT / LOCATION: 630 MONTREAL ROAD APARTMENT BUILDING COMPLEX
630 MONTREAL ROAD OTTAWA, ON

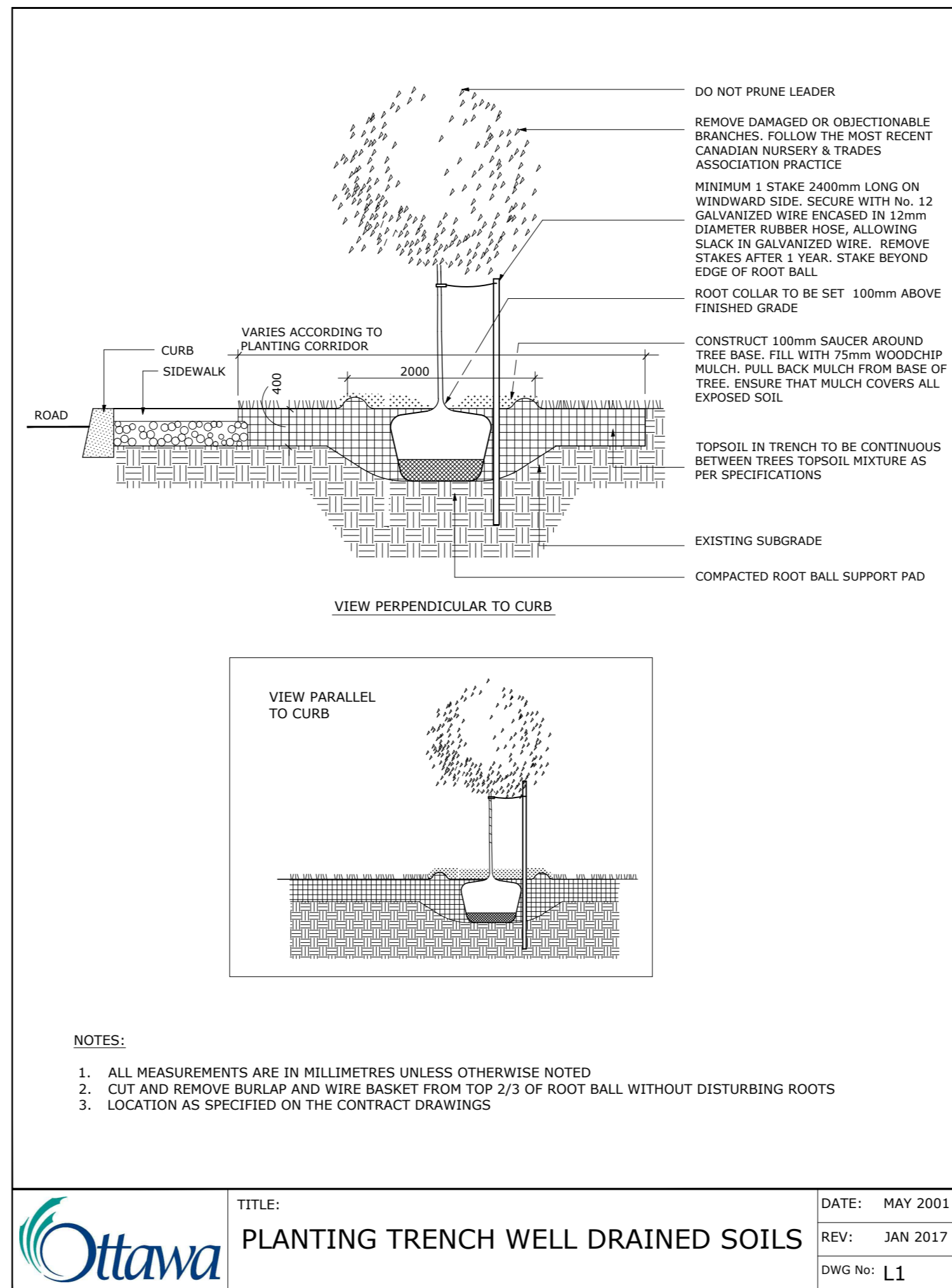
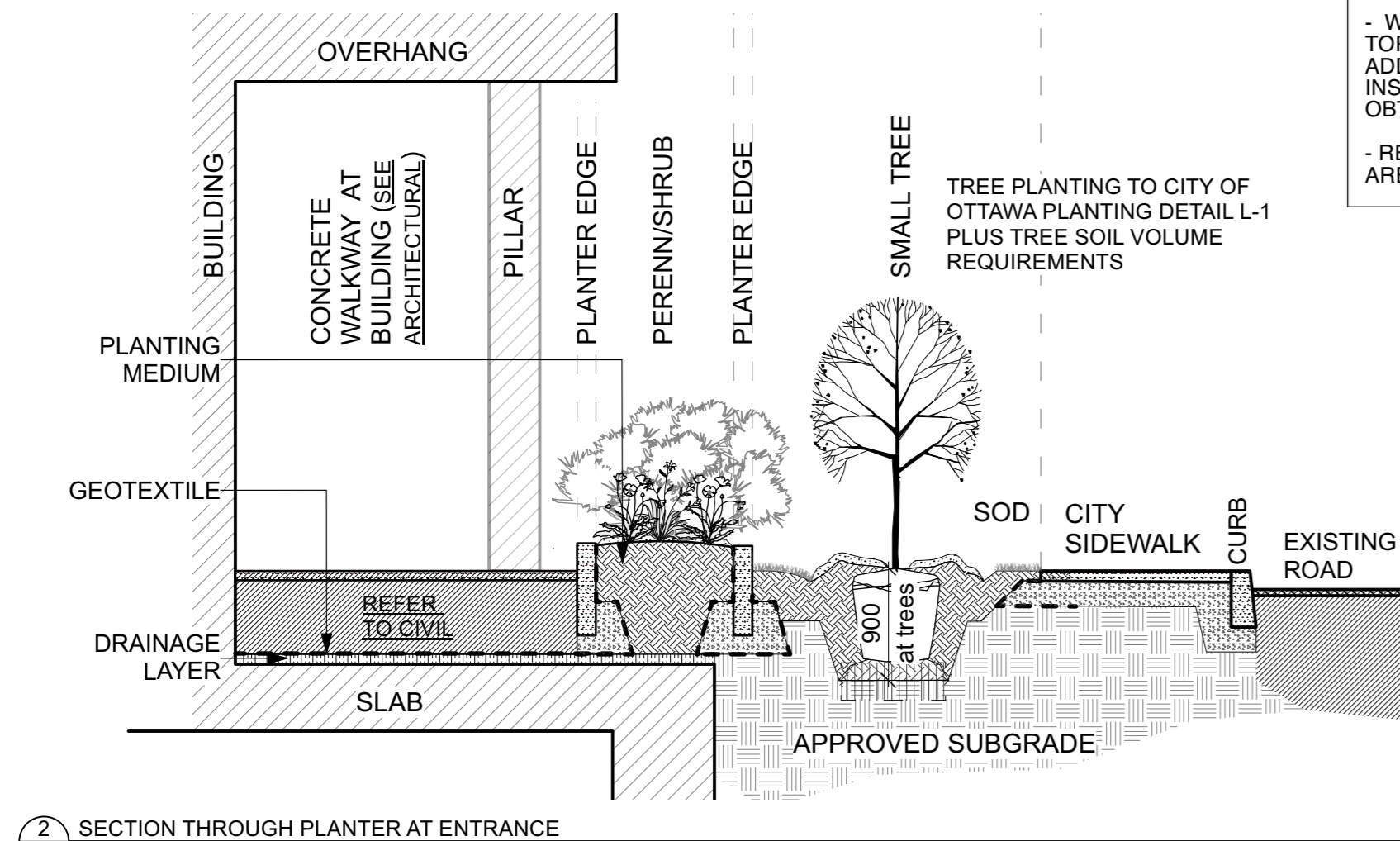
DRAWING: PLANTING PLAN

DATE: OCT 2021
SHEET NO: L-01
PROJECT NO: 21-1646

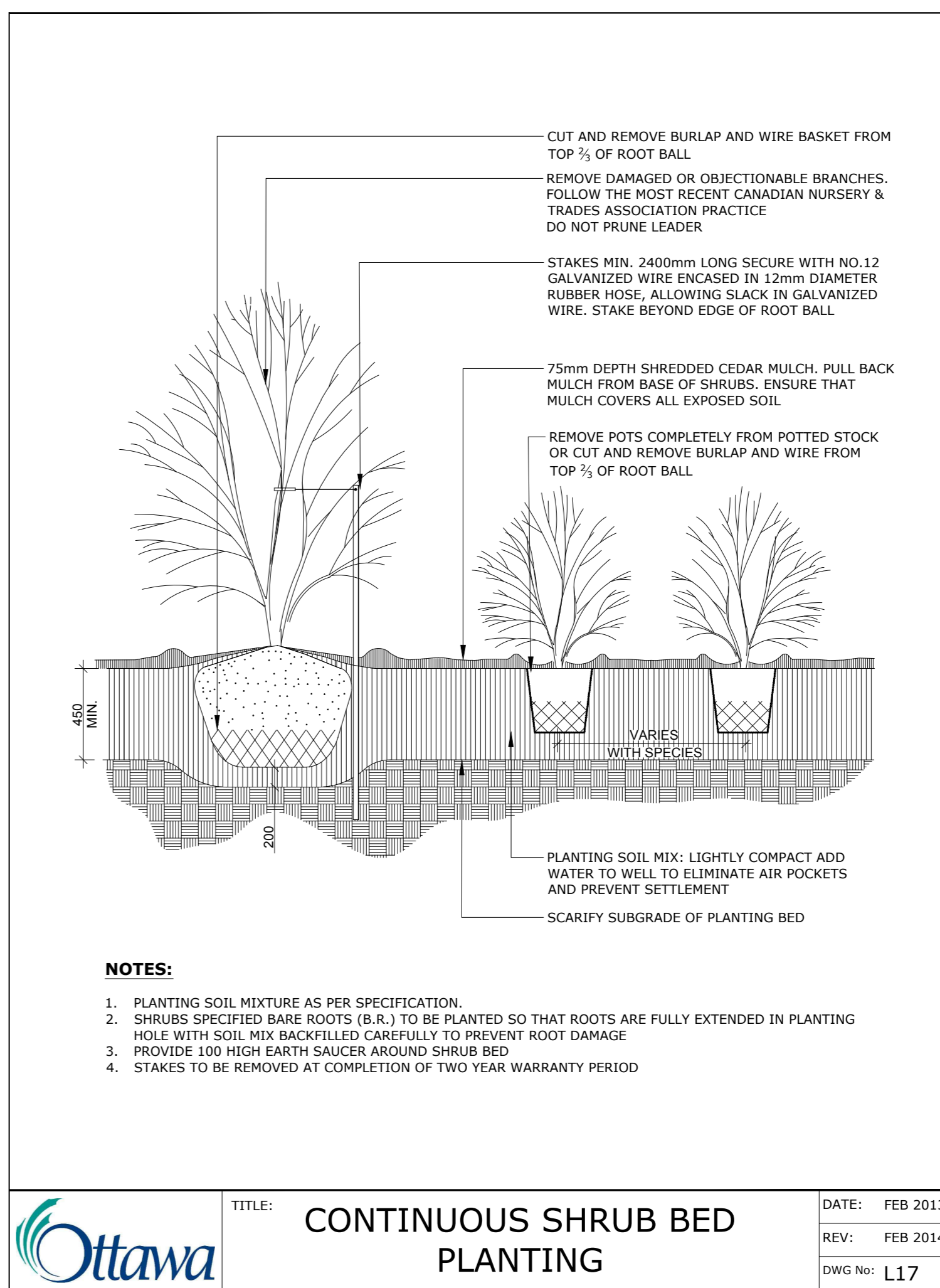


TREE SOIL VOLUME REQUIREMENTS:
 - STANDARD TREE SOIL VOLUMES QUANTITIES INCLUDE THE TOP 900-1000mm OF SOIL/EXISTING SUBSOIL LAYER TO CALCULATE TOTAL SOIL VOLUMES REQUIRED BY CITY OF OTTAWA FOR SUSTAINABLE TREE GROWTH. WHERE LARGER SOFT AREAS ARE AVAILABLE, THE TOP 400-500mm LAYER IS USED TO CALCULATE SOIL VOLUMES (AS PER CITY DETAIL L1).
 - WHERE EXISTING MATERIAL BELOW THE SPECIFIED IMPORTED TOPSOIL IS NOT CONDUCTIVE TO TREE GROWTH, AN ADDITIONAL LAYER OF PLANTING MEDIUM IS TO BE INSTALLED BELOW SPECIFIED TOPSOIL DEPTH TO OBTAIN THE SOIL VOLUME DEPTH REQUIRED.
 - REFER TO SOIL VOLUME CHART AND PLANS FOR AREA WHERE TREE SOIL VOLUMES ARE REQUIRED.

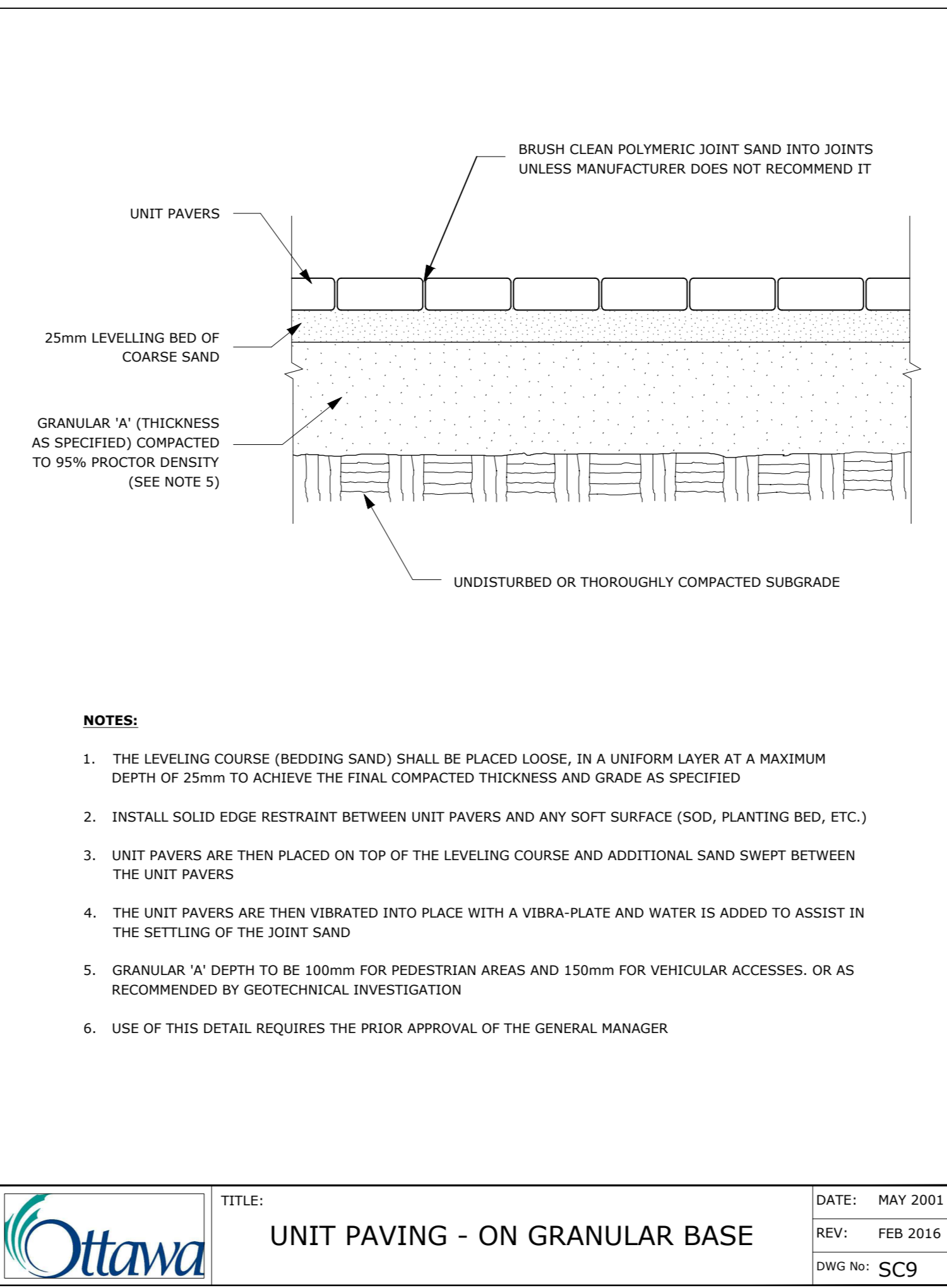
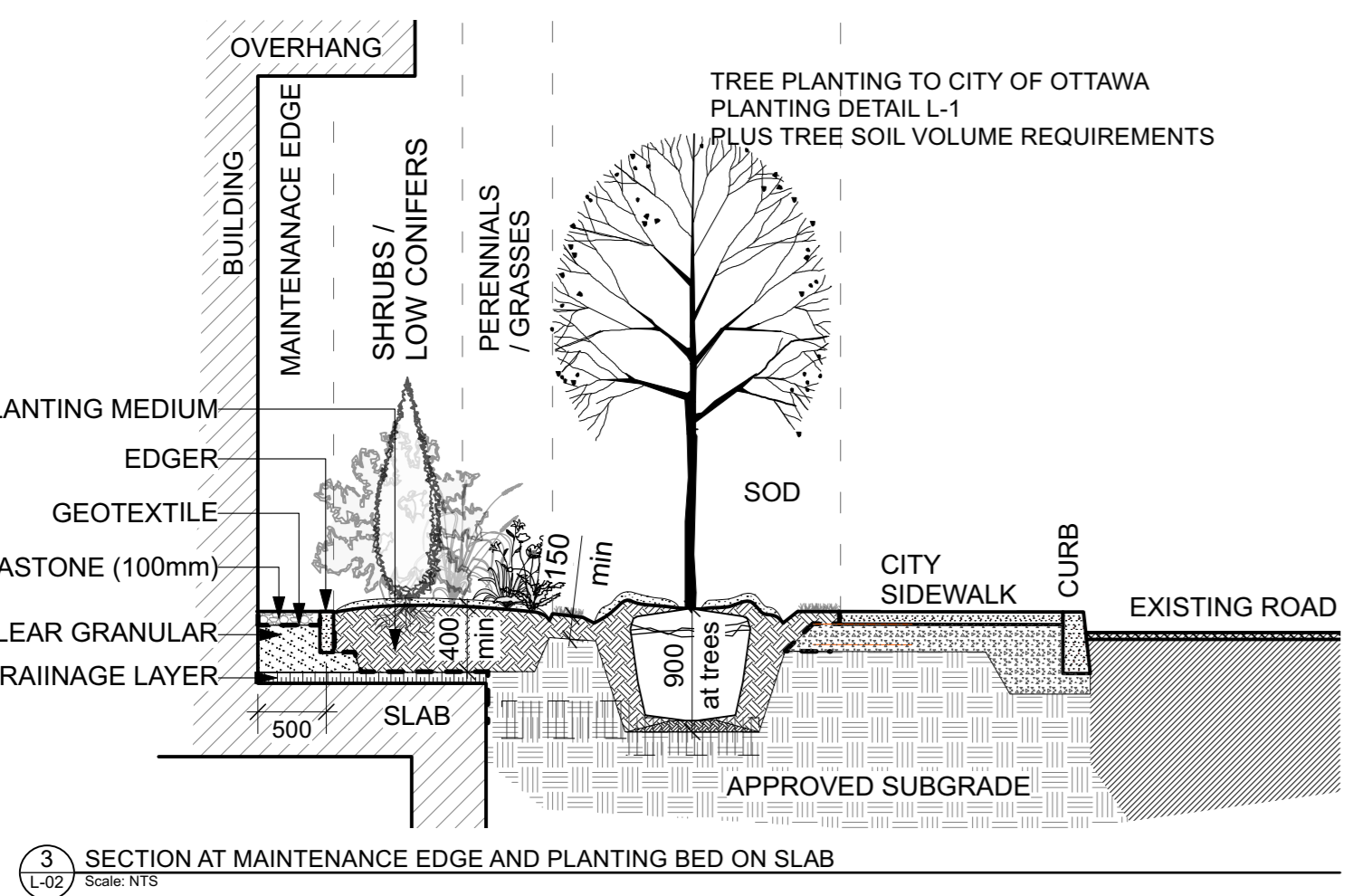
SOIL VOLUME REQUIREMENTS:
 - TREE SOIL VOLUMES QUANTITIES INCLUDE THE TOP 900mm OF SOIL/EXISTING SUBSOIL LAYER TO CALCULATE TOTAL SOIL VOLUMES REQUIRED BY CITY OF OTTAWA FOR SUSTAINABLE TREE GROWTH.
 - WHERE EXISTING MATERIAL BELOW THE SPECIFIED TOPSOIL IS NOT CONDUCTIVE TO TREE GROWTH, AN ADDITIONAL LAYER OF PLANTING MEDIUM IS TO BE INSTALLED BELOW SPECIFIED TOPSOIL DEPTH TO OBTAIN THE 900mm SOIL VOLUME DEPTH REQUIRED.
 - REFER TO SOIL VOLUME CHART AND PLANS FOR AREA WHERE TREE SOIL VOLUMES ARE REQUIRED.



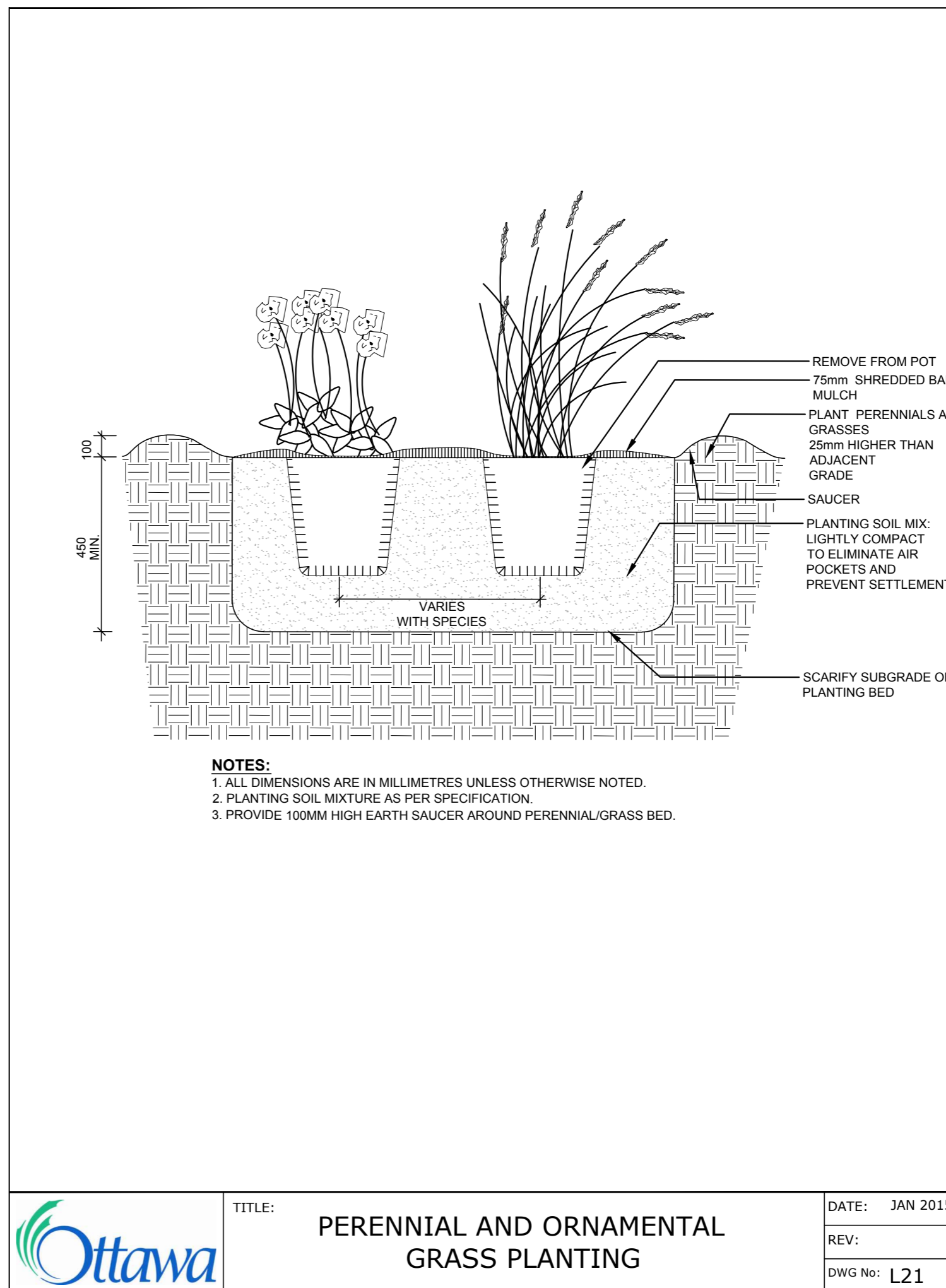
Ottawa TITLE: PLANTING TRENCH WELL DRAINED SOILS DATE: MAY 2001
 REV: JAN 2017
 DWG No: L1



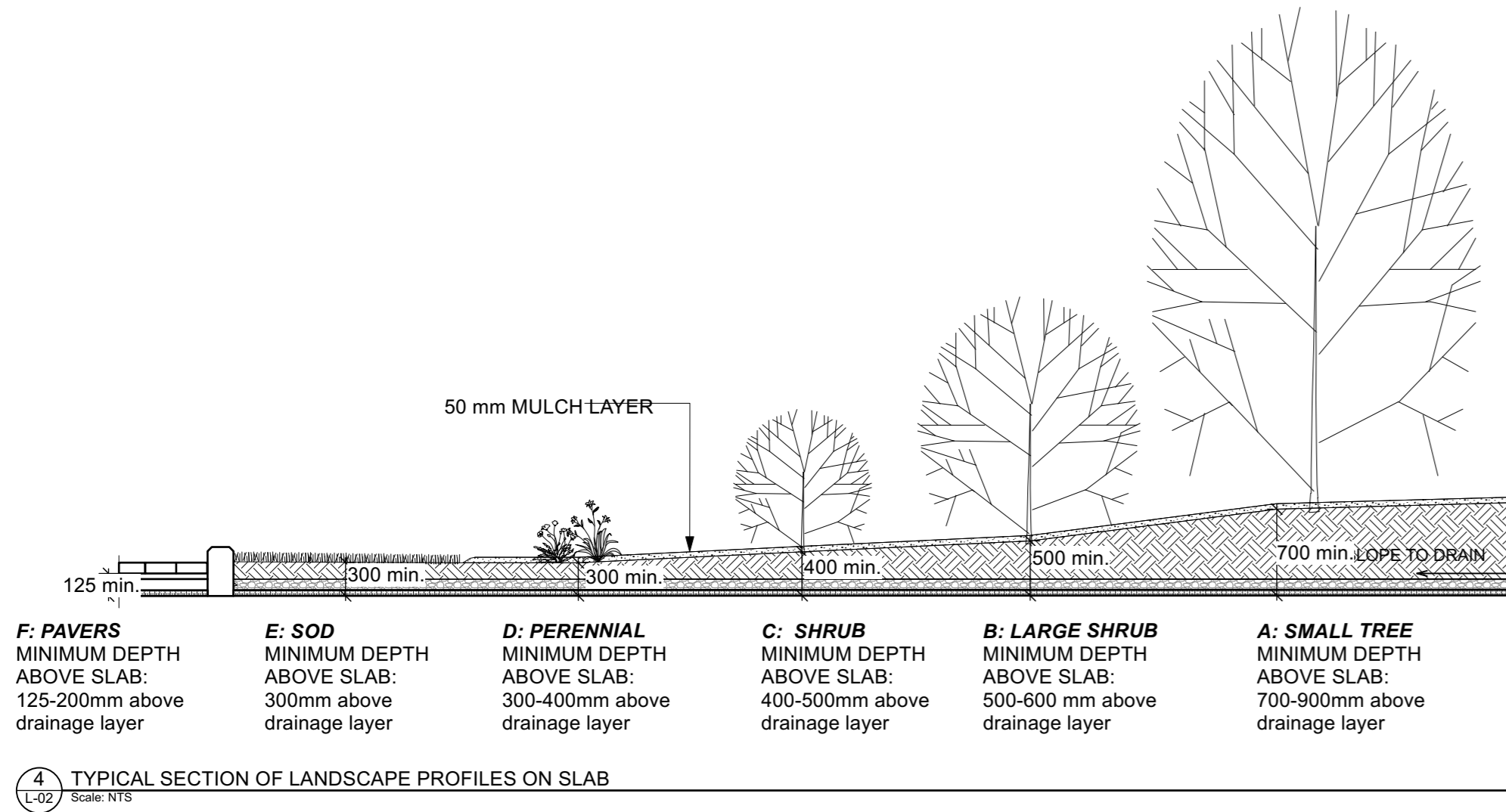
Ottawa TITLE: CONTINUOUS SHRUB BED PLANTING DATE: FEB 2013
 REV: FEB 2014
 DWG No: L17



Ottawa TITLE: UNIT PAVING - ON GRANULAR BASE DATE: MAY 2001
 REV: FEB 2016
 DWG No: SC9



Ottawa TITLE: PERENNIAL AND ORNAMENTAL GRASS PLANTING DATE: JAN 2015
 REV:
 DWG No: L21



4 TYPICAL SECTION OF LANDSCAPE PROFILES ON SLAB Scale: NTS

Ruhland & Associates Ltd
 landscape architecture • urban design • site planning
 Ph 613-224-4744 Fax 613-224-1331 info@rala.ca www.rala.ca

6			
5	City-requested SPC revisions	2023 12 13	
4	Site plan Control resubmission	2023 11 20	
3	Site plan Control resubmission	2022 07 19	
2	Re-issued for Site plan Control	2022 04 22	
1	Issued for Site plan Control	2021 10 26	

DESIGNED BY / CONCEIVED	CHECKED BY / VERIFIED
M RUHLAND	M RUHLAND
DRAWN BY / DESIGNED	
T FROST	

ARCHITECT CONSULTANT

 CONSULTANT CONSULTANT

PROJECT / LOCATION
630 MONTREAL ROAD APARTMENT BUILDING COMPLEX
 630 MONTREAL ROAD OTTAWA, ON

DETAILS

DATE	SHEET NO.
OCT 2021	L-02
PROJECT NO.	
21-1646	