

METRIC
DISTANCES AND COORDINATES SHOWN ON THIS PLAN ARE IN METRES
AND CAN BE CONVERTED TO FEET BY DIVIDING BY 0.3048

COORDINATES WERE DERIVED FROM REAL TIME NETWORK
OBSERVATIONS (SMARTNET) MTM ZONE 9, NAD83 ORIGINAL.

COORDINATES HAVE BEEN DETERMINED TO AN URBAN ACCURACY
IN ACCORDANCE WITH SECTION 14(2) OF O.REG 216/10.

POINT ID	NORTHING	EASTING
51	-	-
55	-	-

COORDINATES CANNOT IN THEMSELVES BE USED TO RE-ESTABLISH
CORNERS OR BOUNDARIES SHOWN ON THIS PLAN.

SCHEDULE			
PART	LOT	REG'D PLAN	PIN
1	PART OF 3, 4 & 5	343	PART OF 04268-0232

I REQUIRE THIS PLAN TO BE
DEPOSITED UNDER THE
LAND TITLES ACT.

PLAN 4R-
RECEIVED AND DEPOSITED

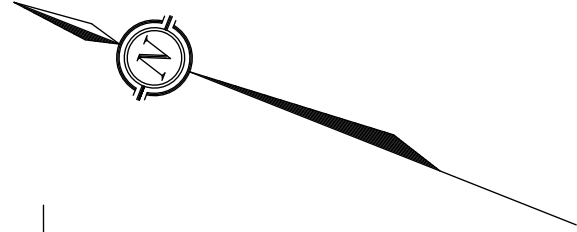
DATE _____

DATE _____

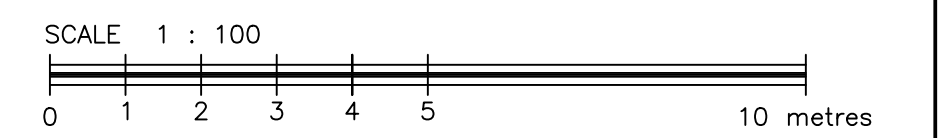
JOHN H. GUTRI, O.L.S.

REPRESENTATIVE FOR
LAND REGISTRAR FOR THE
LAND TITLES DIVISION OF
OTTAWA - CARLETON (N° 4)

PLAN PREPARED FOR COMMITTEE
OF ADJUSTMENT PURPOSES
MARCH 28, 2022



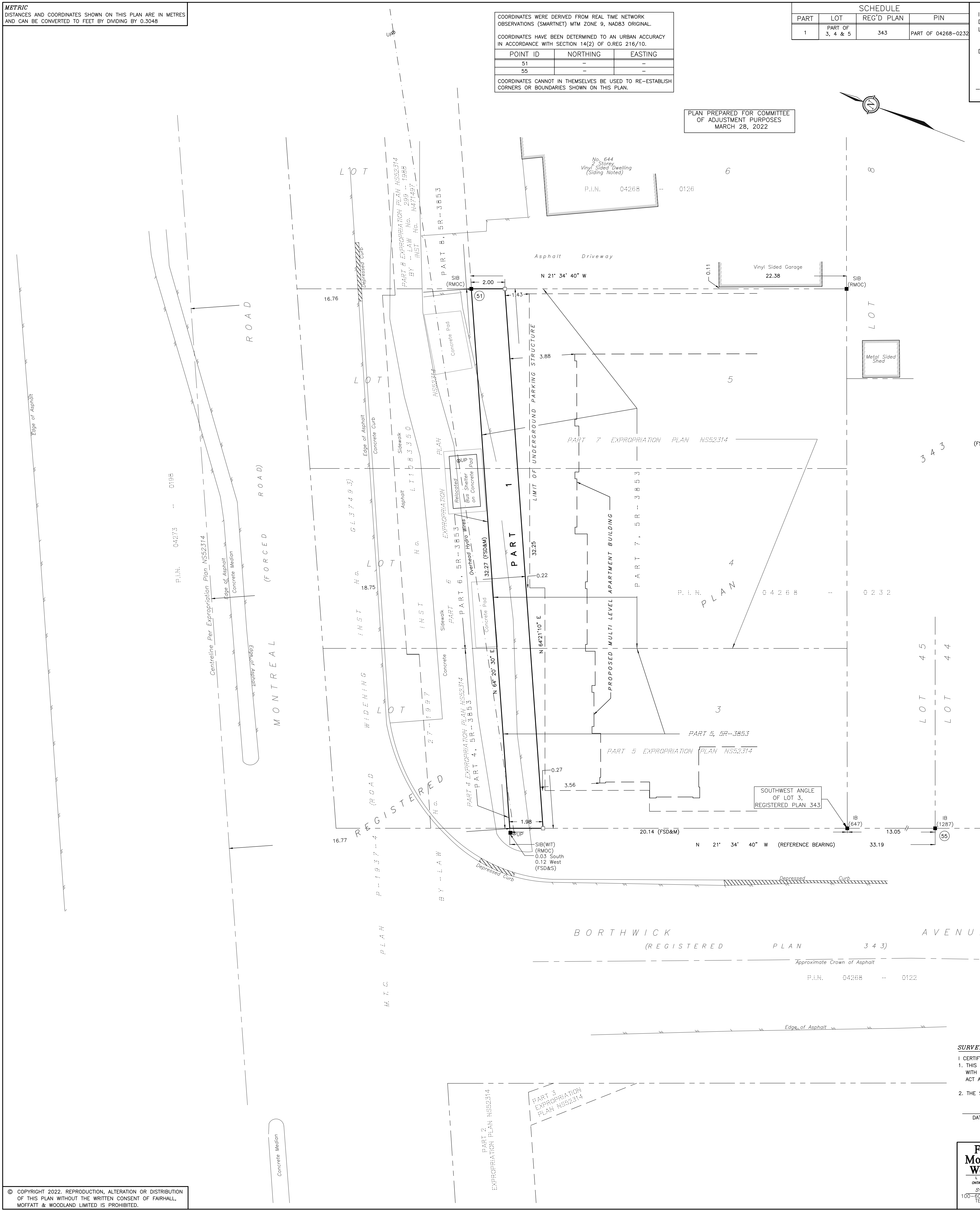
PLAN OF SURVEY OF
PART OF LOTS 3, 4 & 5
REGISTERED PLAN 343
CITY OF OTTAWA



FAIRHALL, MOFFATT & WOODLAND LIMITED
ONTARIO LAND SURVEYORS

NOTE
BEARINGS ARE ASTRONOMIC AND ARE REFERRED TO THE EASTERLY
LIMIT OF BORTHWICK AVENUE AS SHOWN ON PLAN 5R-3853
HAVING A BEARING OF N 21°34'40"E.

- LEGEND**
- - SURVEY MONUMENT SET
 - - SURVEY MONUMENT FOUND
 - SIB - STANDARD IRON BAR
 - IB - IRON BAR
 - (WIT) - WITNESS
 - (S) - SET
 - (M) - MEASURED
 - (FSD)/(1287) - FARLEY, SMITH & MURRAY SURVEYING LTD., O.L.S.
(REF. FILE 291-21)
 - (RMOC) - REGIONAL MUNICIPALITY OF OTTAWA-CARLETON
 - (SU) - SOURCE UNKNOWN
 - PIN - PROPERTY IDENTIFIER NUMBER
 - UP @ - UTILITY POLE
 - - OVERHEAD UTILITY WIRES



© COPYRIGHT 2022. REPRODUCTION, ALTERATION OR DISTRIBUTION
OF THIS PLAN WITHOUT THE WRITTEN CONSENT OF FAIRHALL,
MOFFATT & WOODLAND LIMITED IS PROHIBITED.

SURVEYOR'S CERTIFICATE

I CERTIFY THAT:

- THIS SURVEY AND PLAN ARE CORRECT AND IN ACCORDANCE WITH THE SURVEYS ACT, THE SURVEYORS ACT, THE LAND TITLES ACT AND THE REGULATIONS MADE UNDER THEM.
- THE SURVEY WAS COMPLETED ON SEPTEMBER 7, 2021.

DATE _____ JOHN H. GUTRI
ONTARIO LAND SURVEYOR

Fairhall Moffatt & Woodland LIMITED OTTAWA Ontario Land Surveyors Surveying and Land Information Services 100-500 TERRY FOX DRIVE, KANATA, ONTARIO K2L 4B6 TEL: (613) 591-2580 FAX: (613) 591-1495 www.fmw.on.ca	JOB No. A B 2 8 3 0 0
	REFERENCE No. E 371976 N 5033992 12(a)-343 GR

S:\0895\AB28300\DWG\28MARCH2022
RP_AB283.dwg (as)