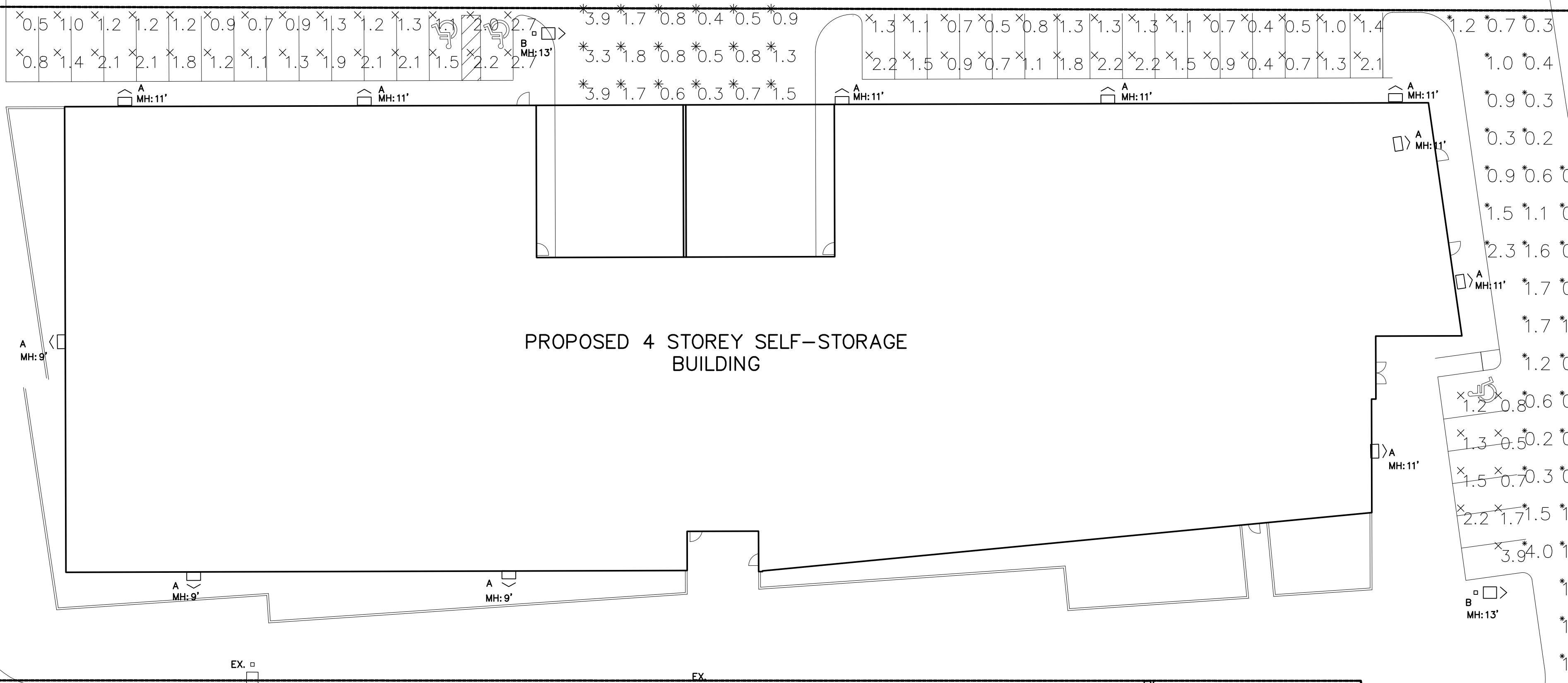


EXISTING 1 STOREY CONCRETE BLOCK STORAGE BUILDING

EXISTING 1 STOREY CONCRETE BLOCK STORAGE BUILDING



PROPOSED 4 STOREY SELF-STORAGE BUILDING

AGES DRIVE

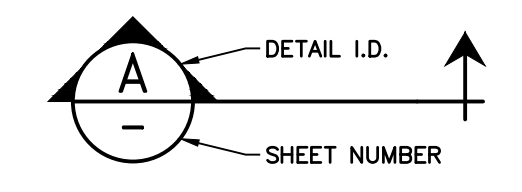
HAWTHORNE ROAD

ELECTRICAL LEGEND	
	WALL MOUNTED LIGHT FIXTURE
	POLE MOUNTED LIGHT FIXTURE
	EXISTING POLE MOUNTED LIGHT FIXTURE
	PROPERTY LINE
ABBREVIATIONS	
EX.	EXISTING
MH	MOUNTING HEIGHT

No.	ISSUE / REVISION	DATE
0	ISSUED FOR SPA	SEP/24/2021

North

Engineer



- THIS DRAWING IS THE EXCLUSIVE PROPERTY OF C.F. CROZIER & ASSOCIATES INC. AND THE REPRODUCTION OF ANY PART WITHOUT PRIOR WRITTEN CONSENT OF THIS OFFICE IS STRICTLY PROHIBITED.
- THE CONTRACTOR SHALL VERIFY ALL DIMENSIONS, LEVELS, AND DATUMS ON SITE AND REPORT ANY DISCREPANCIES OR OMISSIONS TO THIS OFFICE PRIOR TO CONSTRUCTION.
- THIS DRAWING IS TO BE READ AND UNDERSTOOD IN CONJUNCTION WITH ALL OTHER PLANS AND DOCUMENTS APPLICABLE TO THIS PROJECT.
- DO NOT SCALE THE DRAWINGS.
- ALL EXISTING UNDERGROUND UTILITIES TO BE VERIFIED IN THE FIELD BY THE CONTRACTOR PRIOR TO CONSTRUCTION.

Project
3149 HAWTHORNE ROAD
 CITY OF OTTAWA

Drawing
SITE PLAN – PHOTOMETRIC

211 YONGE STREET
 SUITE 301
 TORONTO, ON M5B 1M4
 416-477-3392 T
 WWW.CFCROZIER.CA

SITE PLAN – PHOTOMETRIC
 SCALE: 1:250

LUMINAIRE SCHEDULE							
SYMBOL	LABEL	MANUFACTURER	CATALOG NUMBER	LIGHT LOSS FACTOR	MOUNTING HEIGHT	WATTAGE	DESCRIPTION
	A	LITHONIA	DSW-W2-LED-20C-350-40K-T4M-MVOLT-PER	0.9	REFER TO DRAWING FOR MOUNTING HEIGHTS	36W	D-SERIES SIZE 2 LED WALL LUMINAIRE, TYPE IV MEDIUM, 4000K C/W PHOTOCELL
	B	CREE	OSQA-4MEZ40K-UL	0.9	MOUNTED ON 3' BASE AND 10' POLE	53W	OSQ SERIES AREA LUMINAIRE, TYPE IV MEDIUM, B INPUT POWER DESIGNATOR, 4000K C/W PHOTOCELL

STATISTICS SCHEDULE					
DESCRIPTION	SYMBOL	AVG	MAX	MIN	AVG/MIN
LOADING AREA	*	1.4 fc	3.9 fc	0.3 fc	4.7:1
EAST PARKING LOT	x	1.2 fc	2.2 fc	0.4 fc	3.0:1
WEST PARKING LOT	x	1.5 fc	2.7 fc	0.5 fc	3.0:1
SOUTH EAST PARKING LOT	x	1.5 fc	3.9 fc	0.5 fc	3.1:1
SOUTH EAST ROAD	*	0.9 fc	4.0 fc	0.2 fc	4.5:1



Drawn By	R.J.	Design By	R.T./R.J.	Project	2112-6007
Scale	1:250	Check By	N.J.M.	Drawing	E100

TYPE A

D-Series Size 2 LED Wall Luminaire

Specifications Luminaire
 Width: 18-1/2" (470 mm)
 Depth: 10" (254 mm)
 Height: 7.5/8" (194 mm)

Back Box (BBW)
 Width: 5-1/2" (140 mm)
 Depth: 1-1/2" (38 mm)
 Height: 4" (102 mm)

Weight: 21 lbs (9.5 kg)

Capable Luminaire
 This luminaire is part of an A+ Certified solution for ROAM® or XPoint™ Wireless control networks, providing out-of-the-box control compatibility with simple commissioning, when ordered with drivers and control options marked by a shaded background.

Ordering Information
 EXAMPLE: DSKW2 LED 30C 700 40K T3M MVOLT DDBTxD

Series	LEDs	Beam Spread	Color Temperature	Beam Angle	Mounting	Control Options					
DSKW2 LED	2K	20 LEDs	350	30°	30K	3000K	T25 Type I Short	MVOLT*	Shipped included	PE	Photometric coll, button type*
	3K	30 LEDs	350	30°	40K	4000K	T26 Type II Medium	120*	Shipped separately	PER	5000 lux lock receptacle only (control ordered separately)
	4K	40 LEDs	700	70°	50K	5000K	T28 Type III Medium	240*	Shipped separately	PERS	Pre-wire receptacle only (control ordered separately)
	5K	50 LEDs	1000	100°	60K	6000K	T29 Type IV Medium	360*	Shipped separately	PDG	Spot-wire receptacle only (control ordered separately)
	6K	60 LEDs	1300	130°	70K	7000K	T30 Type V Medium	480*	Shipped separately	DWG	0-10 dimming wires pulled outside fixture for use with an external control (order separately)
	7K	70 LEDs	1600	160°	80K	8000K	T31 Type VI Medium	600*	Shipped separately	FR	100' maximum ambient light sensor (<5 mg/m ³)
										FRFCV	Maximum ambient light sensor (5-15' mounting height, ambient sensor enabled at 10')
										FRFHCV	Maximum ambient light sensor (5-15' mounting height, ambient sensor enabled at 15')

Options
 SH: Single fan (120, 171, 240)
 DF: Double fan (208, 241, 480)
 HS: Hood - 5/8" (268)
 SD: Separate surge protection*

Shipping
 DSKW2 LED 30C 700 40K T3M MVOLT DDBTxD
 05/19/21
 Page 1 of 4

TYPE B

OSQ Series OSQ™ LED Area/Flood Luminaire featuring Cree TrueWhite™ Technology - Medium

Rev. Date: V28.9/21/02/1

Product Description
 The OSQ™ Area/Flood luminaire blends extreme optical control, advanced thermal management and modern, clean aesthetics. Built to last, the housing is rugged cast aluminum with an integral, weatherproof LED driver compartment. Versatile mounting configurations offer simple installation. Its slim, low profile design minimizes wind load requirements and blends seamlessly into the site providing even, quality illumination. The 'B' input power designator is a suitable upgrade for HID applications up to 200 Watt, and the 'X' input power designator is a suitable upgrade for HID applications up to 400 Watt.

Performance Summary
 Utilizes Cree TrueWhite™ Technology on 5000K Luminaires
 NanoOptic® Precision Delivery Grid™ optic
 Assembled in the U.S.A. of U.S. and imported parts
 Initial Delivered Lumens: Up to 17,291
 Efficacy: Up to 136 LPW
 CRI: Minimum 90 CRI (3000K, 4000K, 5700K), 90 CRI (5000K)
 CCT: 3000K, 4000K, 5000K, 5700K
 Limited Warranty*: 10 years on luminaire; 10 years on ColorFast DeltaGuard™ finish; up to 5 years for 'Sensor' accessories; 1 year on luminaire accessories

Ordering Information
 Fully assembled luminaire is composed of two components that must be ordered separately:
 Luminaire Mount: OSQ-BA-MOUNT - Luminaire OSQ-A-ARM-200-16-08-04-04-04
 Mount Luminaire must be ordered separately*

Product	Version	Mounting	Optic	Input Power Designator	CCT	Wattage	Color Options	Options
OSQ	A	NM	Asymmetric 2-MT	B	300	84	Black	F
				K	3000K, 150-270V	84	Compatible only with 120V, 277V or 347V (lines to neutral)	
OSQ	A	NM	Symmetric 2-MT	B	300	84	Black	F
				K	3000K, 150-270V	84	Compatible only with 120V, 277V or 347V (lines to neutral)	
OSQ	A	NM	Asymmetric 2-MT	B	300	84	Black	F
				K	3000K, 150-270V	84	Compatible only with 120V, 277V or 347V (lines to neutral)	
OSQ	A	NM	Symmetric 2-MT	B	300	84	Black	F
				K	3000K, 150-270V	84	Compatible only with 120V, 277V or 347V (lines to neutral)	

Technical Details
 TECHNICAL DETAILS
 POLE TOP FINISHING OPTIONS
 TENON DETAIL
 DRILLING DETAIL
 BASE DETAIL
 BASE PLATE DETAIL
 ELEVATION
 BASE PLATE WELD DETAIL

DYNAPOLE
 www.dynapole.com
 2425 Lockwood Drive, Mississauga, ON L5S 1H1 Canada
 Tel. (905) 671-1507 Fax (905) 671-4606 Toll-Free 1-877-DYNAPOLE

TYPE B

SSS series straight square steel

Technical Details
 TECHNICAL DETAILS
 POLE TOP FINISHING OPTIONS
 TENON DETAIL
 DRILLING DETAIL
 BASE DETAIL
 BASE PLATE DETAIL
 ELEVATION
 BASE PLATE WELD DETAIL

DYNAPOLE
 www.dynapole.com
 2425 Lockwood Drive, Mississauga, ON L5S 1H1 Canada
 Tel. (905) 671-1507 Fax (905) 671-4606 Toll-Free 1-877-DYNAPOLE

LIGHT POLE BASE DETAIL

SCALE: N.T.S.

ELEVATION LAYOUT
 N.T.S.

ELEVATION REINFORCEMENT
 N.T.S.

POLE HEIGHT	'X'	'Y'
TO 6.1m	1.5m	405mm
OVER 6.1m	1.8m	508mm

NOTES:
 1. ALL DIMENSIONS ARE IN MILLIMETERS UNLESS OTHERWISE SHOWN.
 2. MINIMUM OF TWO SLEEVES REQUIRED FOR EACH CONCRETE FOOTING. THREE SLEEVES AS SPECIFIED.
 3. SET TEMPLATE LEVEL. REMOVE TO FINISH CONCRETE AFTER INITIAL SET.
 4. CONCRETE SHALL CONFORM TO CAN/CSA A23.1
 5. MINIMUM CONCRETE COMPRESSIVE STRENGTH SHALL BE NO LESS THAN 25MPa; EXPOSURE CLASS C1.
 6. ALL STEEL WORKS SHALL CONFORM TO CAN/CSA S16-01.
 7. BEARING SURFACES SHALL BE REVIEWED AND APPROVED BY A GEOTECHNICAL ENGINEER.
 8. COORDINATE ANCHOR BOLTS SIZE & EXACT LOCATIONS WITH LIGHT POLE MANUFACTURER PRIOR TO ROUGH-INS.

No.	ISSUE / REVISION	DATE:
0	ISSUED FOR SPA	SEP/24/2021

North

Engineer

Project

3149 HAWTHORNE ROAD
CITY OF OTTAWA

Drawing

SITE LIGHTING DETAILS

Scale

N.T.S.

Check By

N.J.M.

Drawing

E101

CROZIER CONSULTING ENGINEERS

211 YONGE STREET
SUITE 301
TORONTO, ON M5B 1M4
416-477-3392 T
WWW.CFCROZIER.CA

Drawn By R.J. Design By R.T./R.J. Project 2112-6007
 Scale N.T.S. Check By N.J.M. Drawing E101