

Ottawa (Head Office)

1800 Bantree Street
Ottawa, Ontario K1B 5L6

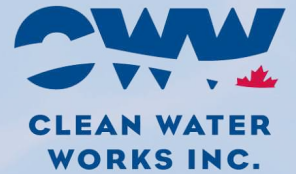
☎ 613.745.2444
☎ 613.745.9994

www.cwwcanada.com
1.866.695.0155

Montreal

7562, Côte-de-Liesse
St-Laurent, Quebec H4T 1E7

☎ 514.738.2666
☎ 514.738.9762



INTEGRATED SEWER SOLUTIONS

COD

**3149 Hawthorne
Ottawa, Ontario**

DRAIN CCTV INSPECTION REPORT

Report ID
129389

Sewer Use
Sanitary

Completion Date
June 30 2023

Inspected Length
30.5 meters

THE WAY IS CLEAR™

- Watermain Swabbing
- Hydro Vacuum Excavation
- CCTV Inspection of Sewers
- Plumbing & Drain Services
- Structural Rehabilitation of Manholes
- Cured-in-Place-Pipe Lining & Spot Repairs
- Grouting, Test & Seal Joints, Manholes & Services
- Lateral Sewer Inspection & Locates From Main
- Sewer Cleaning, Flushing & Pumping



Index of pipes

2 items

Inspected length : 61.00

Total length : 0.00

Pipe	Start/End	Direction	Road	Date	Inspected	Total	Page
3149 Hawthorne_129389_PostCleaning	Cleanout --> Mainline	Direction of flow	3149 Hawthorne	30/06/2023, 11:42 AM	30.5		5
3149 Hawthorne_129389_PreCleaning	Cleanout --> Mainline	Direction of flow	3149 Hawthorne	30/06/2023, 11:50 AM	30.5		8



Internal condition grade

2 items

1 - Acceptable structural condition (2 of 2 items)

Total	Peak	Pipe	Start/End	Direction	Street	Page
0	0	3149 Hawthorne _129389_PostCleaning	Cleanout --> Mainline	Direction of flow	3149 Hawthorne	5
0	0	3149 Hawthorne _129389_PreCleaning	Cleanout --> Mainline	Direction of flow	3149 Hawthorne	8



Operational performance grade

2 items

Grade: 1 (2 of 2 items)

Total	Peak	ICG	Pipe	Start/End	Direction	Street	Page
0	0	1	3149 Hawthorne_129389_PostCleaning	Cleanout --> Mainline	Direction of flow	3149 Hawthorne	5
0	0	1	3149 Hawthorne_129389_PreCleaning	Cleanout --> Mainline	Direction of flow	3149 Hawthorne	8



Pipe summary and condition details

Pipe identification

Pipe: 3149 Hawthorne _129389_PostCleaning
 Direction of flow: Cleanout --> Mainline

Pipe location

Road:	3149 Hawthorne	<u>UPSTREAM</u>	<u>DOWNSTREAM</u>
Crossroad:		Easting (X):	Easting (X):
Drainage Area:		Northing (Y):	Northing (Y):
City:	Ottawa	Elevation (Z):	Elevation (Z):
Location:		GPS Accuracy:	
Owner:	COD	Corrdinate System:	
Road segment:		Vertical Datum:	

Pipe characteristics

Category:	Sanitary	Size:	100
Shape:		Width:	
Material:	ABS	Total length:	
Lining:		Pipe unit length:	
Type:	Lateral	Year laid:	
Invert (upstream):		Invert (downstream):	
Depth (upstream):		Depth (downstream):	
Cover level (upstream):		Cover level (downstream):	

Additional details

Inspection standard:	WRC 3rd edition	Survey Abandoned:	
Date:	30/06/2023, 11:42 AM	Inspected length:	30.5
Project Number:		Pre-cleaning:	<input type="checkbox"/>
Contractor project #:	Clean Water Works	Blocked flow:	<input type="checkbox"/>
Client:	COD_3169 Hawthorne _WO129389	Regular CCTV:	<input type="checkbox"/>
Purpose:		Reinspect with ZOOM:	<input type="checkbox"/>
Weather:		Medium #:	
Operator:	Don	Start position:	
Analyst:		End position:	

Internal Condition

Grade: 1	Grade: 1
Total: 0	Total: 0
Peak: 0	Peak: 0

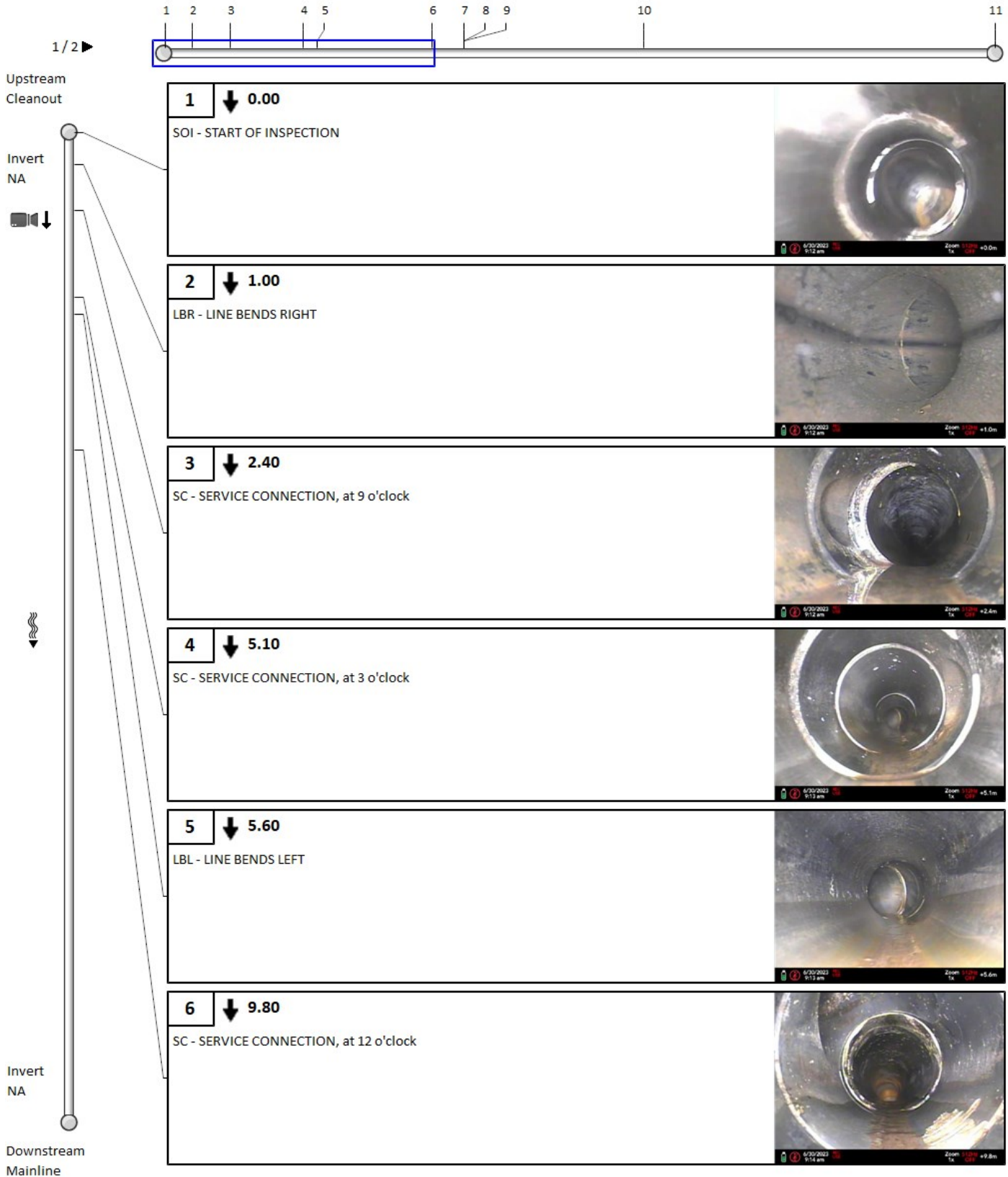
Operational Performance

Comments

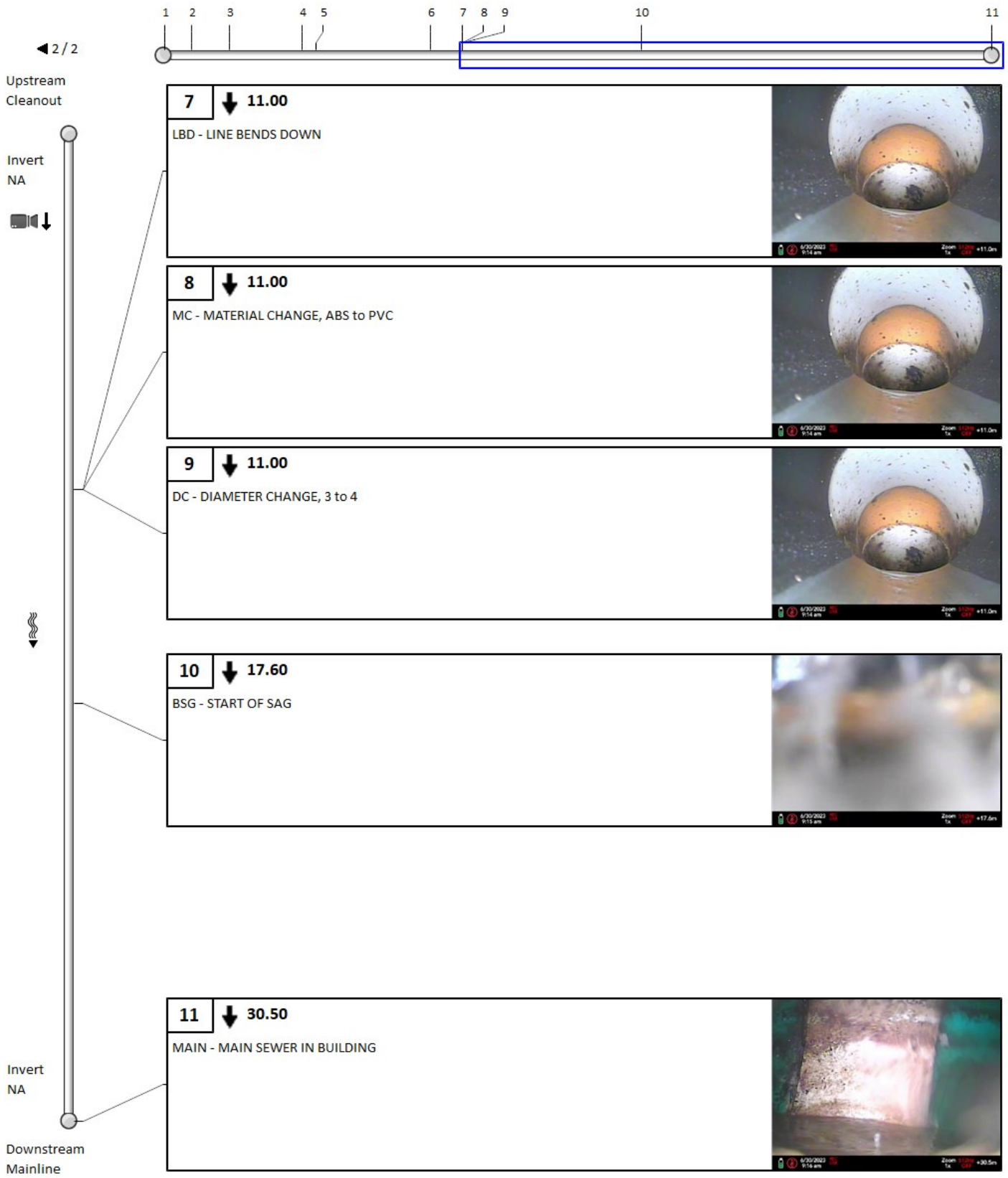
Other information

Date:	June 30 2023	Information 7:	
Work Order#:	129389	Information 8:	
Start of Location:	Cleanout	Information 9:	
End of Location:	Mainline	Information 10:	
Location:		P15 (MAMR):	0
Information 6:		P16 (MAMR):	0

Pipe summary and condition details



Pipe summary and condition details



Pipe summary and condition details

Pipe identification

Pipe: 3149 Hawthorne _129389_PreCleaning
 Direction of flow: Cleanout --> Mainline

Pipe location

Road:	3149 Hawthorne	<u>UPSTREAM</u>	<u>DOWNSTREAM</u>
Crossroad:		Easting (X):	Easting (X):
Drainage Area:		Northing (Y):	Northing (Y):
City:	Ottawa	Elevation (Z):	Elevation (Z):
Location:		GPS Accuracy:	
Owner:	COD	Corrdinate System:	
Road segment:		Vertical Datum:	

Pipe characteristics

Category:	Sanitary	Size:	100
Shape:		Width:	
Material:	ABS	Total length:	
Lining:		Pipe unit length:	
Type:	Lateral	Year laid:	
Invert (upstream):		Invert (downstream):	
Depth (upstream):		Depth (downstream):	
Cover level (upstream):		Cover level (downstream):	

Additional details

Inspection standard:	WRC 3rd edition	Survey Abandoned:	
Date:	30/06/2023, 11:50 AM	Inspected length:	30.5
Project Number:		Pre-cleaning:	<input type="checkbox"/>
Contractor project #:	Clean Water Works	Blocked flow:	<input type="checkbox"/>
Client:	COD_3169 Hawthorne _WO129389	Regular CCTV:	<input type="checkbox"/>
Purpose:		Reinspect with ZOOM:	<input type="checkbox"/>
Weather:		Medium #:	
Operator:	Don	Start position:	
Analyst:		End position:	

Internal Condition

Grade: 1
 Total: 0
 Peak: 0

Operational Performance

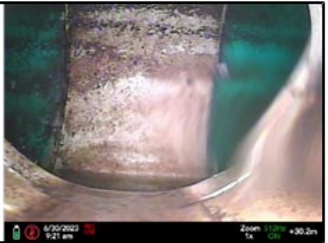
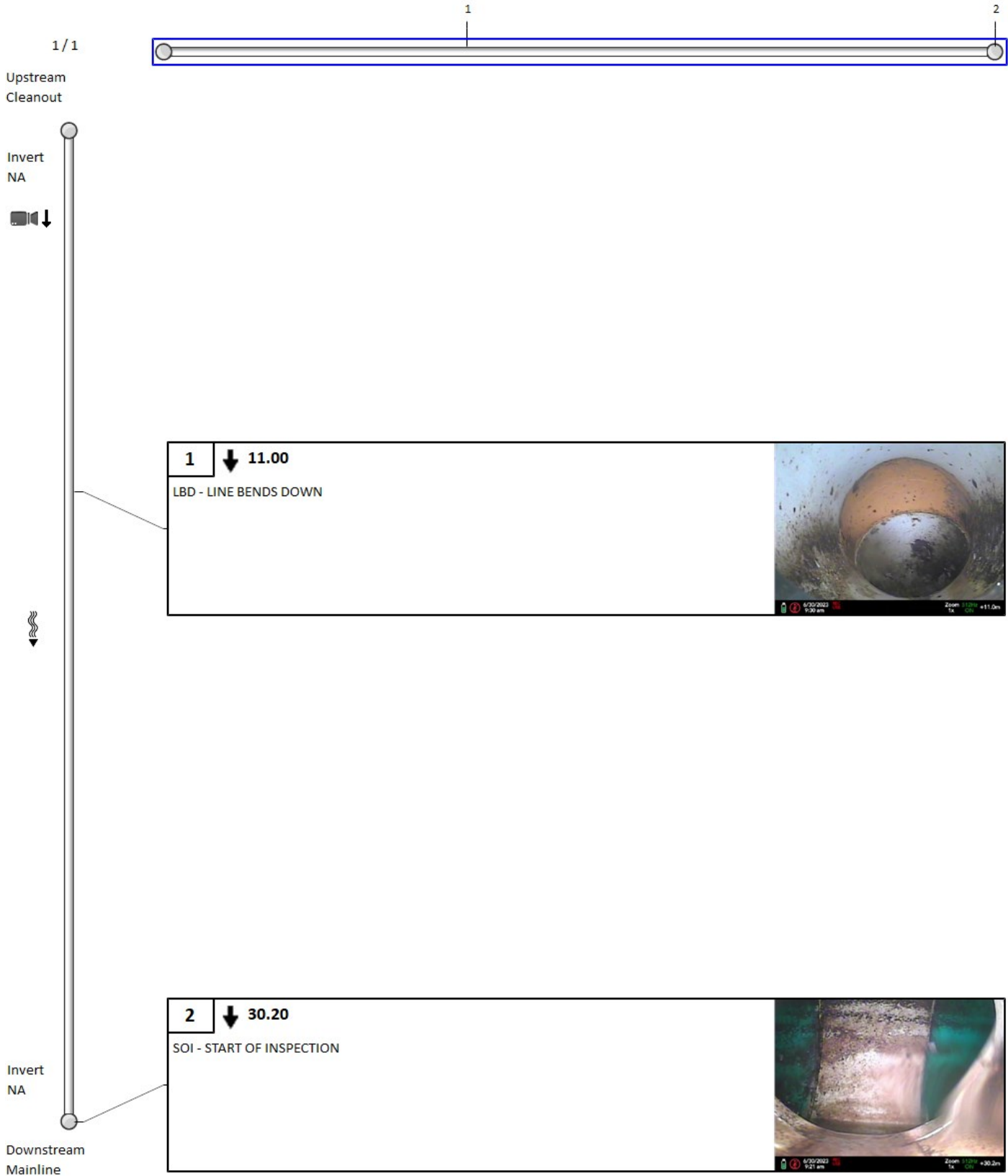
Grade: 1
 Total: 0
 Peak: 0

Comments






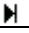










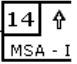
Other information

Date:	June 30 2023	Information 7:	
Work Order#:	129389	Information 8:	
Start of Location:	Cleanout	Information 9:	
End of Location:	Mainline	Information 10:	
Location:		P15 (MAMR):	0
Information 6:		P16 (MAMR):	0

Pipe summary and condition details



Vision Report © Legend

	The numbers sequentially identify each observation. They allow you to find complete descriptions and related photos throughout the pages. Note that when the pipe contains too many observations, the Vision© report hides the least important observations to optimize the display*.
60	A number with neither a square nor circle indicates a general observation.
	A circled number indicates a structural anomaly. The color of the circle indicates the severity of the anomaly on a scale of 1 to 5, 5 being the most severe: green=1, blue=2, magenta=3, orange=4 and red=5.
	A number in a square indicates an operation and maintenance anomaly. The color of the square indicates the severity of the anomaly on a scale of 1 to 5, 5 being the most severe: green=1, blue=2, magenta=3, orange=4 and red=5.
◀ 3 / 31 ▶	Indicates the current page number of the inspection report.
	The blue square indicates a section of the pipe; this section is covered in detail on the current page of the report.
	The green line indicates the inspected part of the pipe. The remaining white line indicates the uninspected part of the pipe.
	Indicates the hold points on the camera during an inspection.
	Indicates the hold points on the camera during the reverse inspection.
	Indicates that a reverse inspection was carried out, however the camera did not reach the initial inspection hold point. (the hold point of the initial inspection)
	Indicates that a reverse inspection was carried out and that it has joined (has arrived at) the initial inspection hold point.
401-059B 	Identifies the start manhole number. Note that this manhole is not necessarily the upstream manhole of the pipe.
401-631 	Identifies the end manhole number. Note that this manhole is not necessarily the downstream manhole of the pipe.
	A downward arrow indicates that the inspection was carried out in the direction of the current, whereas an upward arrow indicates an inspection against the current.
	Note that the manhole located on the upper left of the page is always the start manhole, but not necessarily the upstream manhole of the pipe.
	This camera followed by a downward arrow is located on the upper left of the vertical pipe; it indicates that an inspection was done from this manhole.
	When the second camera appears on the bottom left page it means that a reverse inspection was carried out. Information about the reverse inspection is included in the report, thereby combining both inspections.
Invert 3.40	The measurement shown under the word <Invert> indicates the measurements between the frame and the pipe captured during the inspection. This measurement is available at the top left for the start manhole and the bottom left for the end manhole. If the invert was not measured during the inspection, an <NA> mark will be displayed.
	The downward bold arrow to the right of the observation number indicates that this observation was captured during the initial inspection.
	The blank arrow pointing upwards and located to the right of the observation number indicates that this observation was taken during the reverse inspection period, thereby confirming that this report combined both inspections.
18.40 m	Located to the right of the observation number is a number identifying the observation distance in relation to the start of the pipe.
SRV - Armature visible	A full description of the observation code according to the protocol used.

*Any hidden observations are readily accessible from the database as well as in other CTSpec report templates.

** CTSpec inc. reserves the right to modify, eliminate or add to the product features described in this pamphlet without notice.

© 2012 CTSpec inc. All rights reserved.