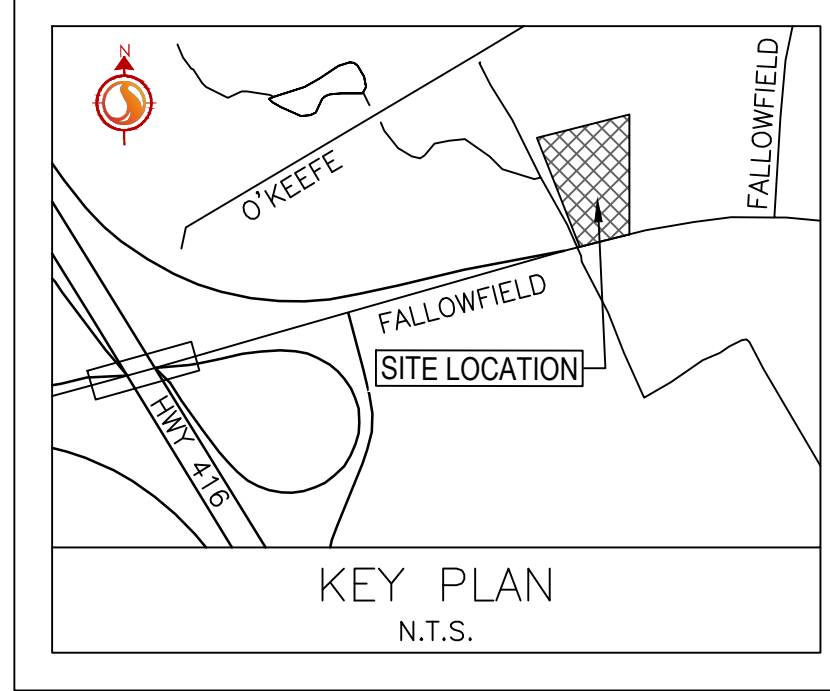


Copyright Reserved

The Contractor shall verify and be responsible for all dimensions. DO NOT scale the drawing - any errors or omissions shall be reported to Stantec without delay.
The Copyrights to all designs and drawings are the property of Stantec. Reproduction or use for any purpose other than that authorized by Stantec is forbidden.



Legend

- PROPOSED WATERMAIN
- PROPOSED VALVE AND VALVE BOX
- PROPOSED VALVE CHAMBER
- PROPOSED REDUCER
- PROPOSED FIRE HYDRANT
- PROPOSED SANITARY SEWER
- PROPOSED STORM SEWER
- PROPOSED CATCHBASIN
- CIRCULAR ORIFICE (SEE ICD TABLE ON SSP-1 AND SD-1)
- EX/FUT. WATERMAIN
- EXISTING/FUTURE VALVE AND VALVE BOX
- EXISTING/FUTURE VALVE CHAMBER
- EXISTING/FUTURE REDUCER
- EXISTING/FUTURE FIRE HYDRANT
- EXISTING/FUTURE SANITARY SEWER
- EXISTING/FUTURE STORM SEWER
- EXISTING/FUTURE CATCHBASIN MANHOLE
- EXISTING/FUTURE CATCHBASIN
- PROPOSED DEPRESSED CURB LOCATIONS
- PROPOSED BARRIER CURB
- THERMAL INSULATION ON STORM SEWER WHERE COVER IS LESS THAN 1.5m. THERMAL INSULATION ON WATERMAIN WHERE COVER IS LESS THAN 2.4m AS PER W22.
- WATER METER
- REMOTE WATER METER

Notes

0 ISSUED FOR SPA MJS TR 21.04.08
Revision By Appd. YY.MM.DD

File Name: 160401620 DB.dwg MJS KK MJS 21.01.15
Dwn. Chkd. Dgn. YY.MM.DD

Permit Seal

Client/Project
2441736 ONTARIO INC.
CLIENTE
BLOCK 10
HOME 2 - PROPOSED 6 STOREY
OTTAWA, ON, CANADA

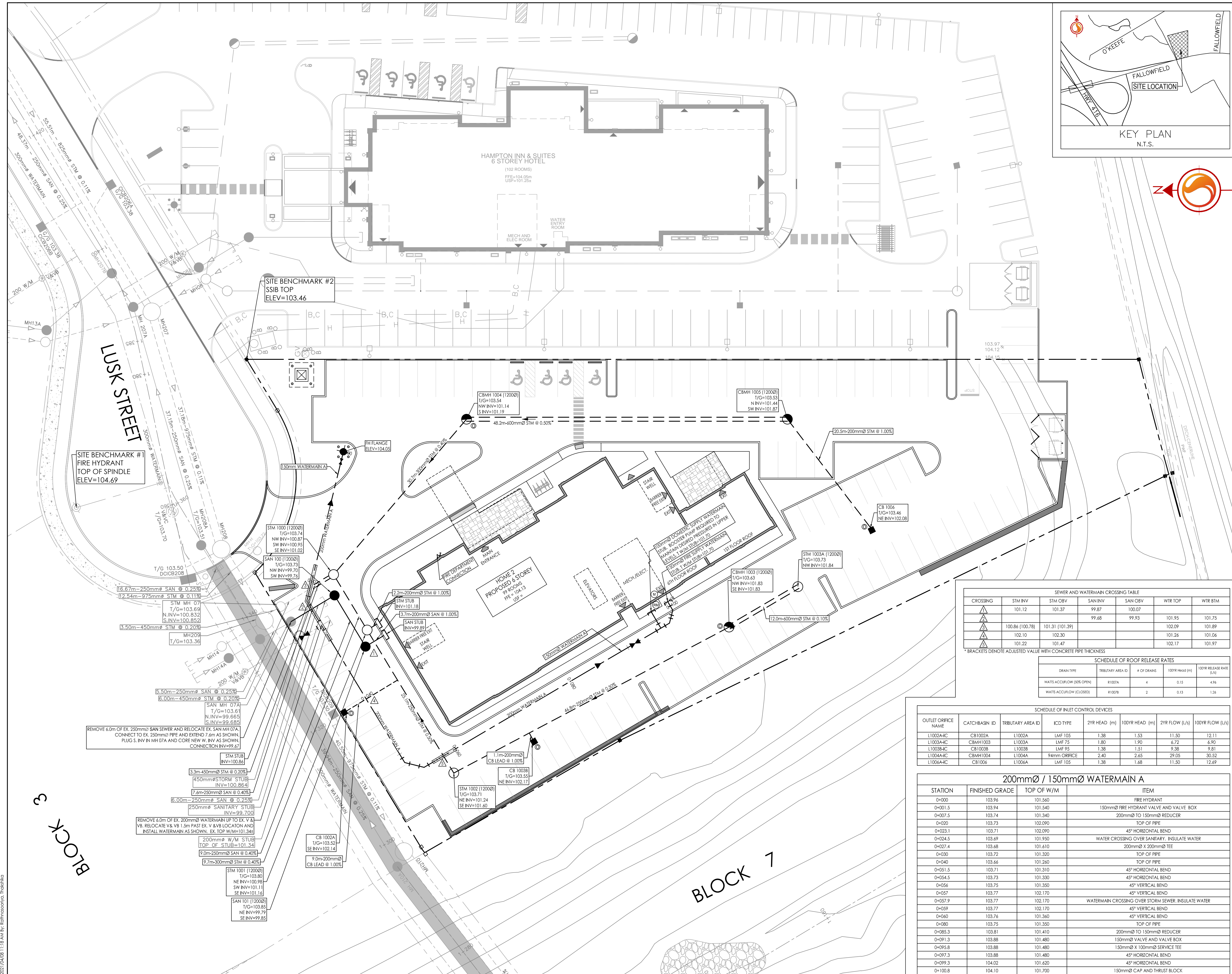
Title
SITE SERVICING PLAN

Project No. 160401620 Scale 0 2.5 7.5 12.5m
1:250

Drawing No. Sheet Revision

SSP-1 3 of 7 0

PLANNING



SEWER AND WATERMAIN CROSSING TABLE

CROSSING	STM INV	STM OBV	SAN INV	SAN OBV	WTR TOP	WTR BTM
▲	101.12	101.37	99.87	100.07		
▲	100.86 (100.78)	101.31 (101.39)	99.68	99.93	101.95	101.75
▲	102.10	102.30			102.09	101.89
▲	101.22	101.47			101.26	101.06
▲					102.17	101.97

* BRACKETS DENOTE ADJUSTED VALUE WITH CONCRETE PIPE THICKNESS

SCHEDULE OF ROOF RELEASE RATES

GRAIN TYPE	TRIBUTARY AREA ID	# OF DRAINS	100YR HEAD (m)	100YR RELEASE RATE (L/s)
WATTS ACCURFLOW (BOX OPEN)	R1005A	4	0.15	4.96
WATTS ACCURFLOW (CLOSED)	R1007B	2	0.13	1.26

SCHEDULE OF INLET CONTROL DEVICES

OUTLET ORIFICE NAME	CATCHBASIN ID	TRIBUTARY AREA ID	ICD TYPE	2YR HEAD (m)	100YR HEAD (m)	2YR FLOW (L/s)	100YR FLOW (L/s)
L1002A-IC	CB1002A	L1002A	LMF 105	1.38	1.53	11.50	12.11
L1003A-IC	CBMH1003	L1003A	LMF 75	1.80	1.90	6.72	6.90
L1003B-IC	CB1003B	L1003B	LMF 75	1.38	1.51	9.38	9.81
L1004A-IC	CBMH1004	L1004A	94mm ORIFICE	2.40	2.45	29.05	30.52
L1006A-IC	CB1006A	L1006A	LMF 105	1.38	1.68	11.50	12.69

200mmØ / 150mmØ WATERMAIN A

STATION	FINISHED GRADE	TOP OF W/M	ITEM
0+000	103.96	101.560	FIRE HYDRANT
0+001.5	103.94	101.540	150mmØ FIRE HYDRANT VALVE AND VALVE BOX
0+007.5	103.74	101.340	200mmØ TO 150mmØ REDUCER
0+020	103.73	102.090	TOP OF PIPE
0+023.1	103.71	102.090	45° HORIZONTAL BEND
0+024.5	103.69	101.950	WATER CROSSING OVER SANITARY. INSULATE WATER
0+027.4	103.68	101.410	200mmØ X 200mmØ TEE
0+030	103.72	101.320	TOP OF PIPE
0+040	103.66	101.260	TOP OF PIPE
0+051.5	103.71	101.310	45° HORIZONTAL BEND
0+054.5	103.73	101.330	45° HORIZONTAL BEND
0+056	103.75	101.350	45° VERTICAL BEND
0+057	103.77	102.170	45° VERTICAL BEND
0+057.9	103.77	102.170	WATERMAIN CROSSING OVER STORM SEWER. INSULATE WATER
0+059	103.77	102.170	45° VERTICAL BEND
0+060	103.76	101.360	45° VERTICAL BEND
0+080	103.75	101.350	TOP OF PIPE
0+085.3	103.81	101.410	200mmØ TO 150mmØ REDUCER
0+091.3	103.88	101.480	150mmØ VALVE AND VALVE BOX
0+095.8	103.98	101.480	150mmØ X 100mmØ SERVICE TEE
0+097.3	103.98	101.480	45° HORIZONTAL BEND
0+099.3	104.02	101.420	45° HORIZONTAL BEND
0+100.8	104.10	101.700	150mmØ CAP AND THRUST BLOCK

2021/04/09 11:58 AM C:\Users\jrb\OneDrive\Documents\160401620 DB.dwg
ORIGINAL SHEET - ARCH D