

Copyright Reserved

The Contractor shall verify and be responsible for all dimensions. DO NOT scale the drawing - any errors or omissions shall be reported to Stantec without delay.
The Copyrights to all designs and drawings are the property of Stantec. Reproduction or use for any purpose other than that authorized by Stantec is forbidden.

Legend

- ORIGINAL GROUND ELEVATION
- PROPOSED LOT CORNER ELEVATION
- EXISTING ELEVATION AT LOT CORNER
- FLOW DIRECTION AND GRADE
- FINISHED FIRST FLOOR ELEVATION
- UNDERSIDE OF FOOTING ELEVATION
- ENGINEERED FILL REQUIRED
- TERRACING 3:1 SLOPE MAXIMUM (UNLESS OTHERWISE SHOWN)
- DIRECTION OF PROPOSED OVERLAND FLOW
- PROPOSED VALVE BOX
- PROPOSED VALVE CHAMBER
- PROPOSED FIRE HYDRANT
- PROPOSED SANITARY SEWER MANHOLE
- PROPOSED STORM SEWER MANHOLE
- PROPOSED CATCHBASIN MANHOLE
- PROPOSED CATCHBASIN
- PROPOSED DEPRESSED CURB LOCATION AS PER S.C.I.1
- PROPOSED BARRIER CURB
- PROPOSED COMMUNITY MAILBOX LOCATIONS
- HEAVY DUTY ASPHALT
- OVERLAND SPILL LOCATION
- TWSI LOCATION AS PER CITY STD
- CIRCULAR ORIFICE (SEE ICD TABLE ON SSP-1 AND SD-1)

Notes

PAVEMENT STRUCTURE

ACCESS ROADS IN FILL AREAS
40mm WEAR COURSE- HL 3
50mm BASE COURSE- HL 4
150mm OPSS GRANULAR 'A' BASE
450mm OPSS GRANULAR 'B' TYPE II

ACCESS ROADS IN NATIVE AREAS
40mm WEAR COURSE- HL 3
50mm BASE COURSE- HL 4
150mm OPSS GRANULAR 'A' BASE
300mm OPSS GRANULAR 'B' TYPE II

CAR PARKING AREAS IN FILL AREAS
50mm WEAR COURSE- HL 3
150mm OPSS GRANULAR 'A' BASE
450mm OPSS GRANULAR 'B' TYPE II

CAR PARKING AREAS IN NATIVE AREAS
50mm WEAR COURSE- HL 3
150mm OPSS GRANULAR 'A' BASE
300mm OPSS GRANULAR 'B' TYPE II

2	REVISED AS PER CITY COMMENTS	MJS	KJK	22.08.30
1	REVISED AS PER CITY COMMENTS	WAJ	KJK	22.06.03
0	ISSUED FOR SPA	MJS	TR	21.04.08

Revision	By	Appd.	YY.MM.DD
----------	----	-------	----------

File Name:	160401620 DB.dwg	MJS	KK	MJS	21.01.15
		Dwn.	Chkd.	Dgn.	YY.MM.DD

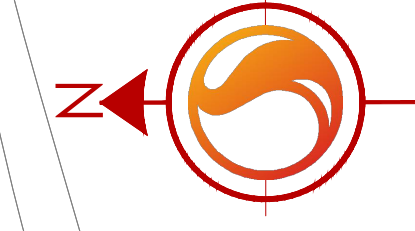
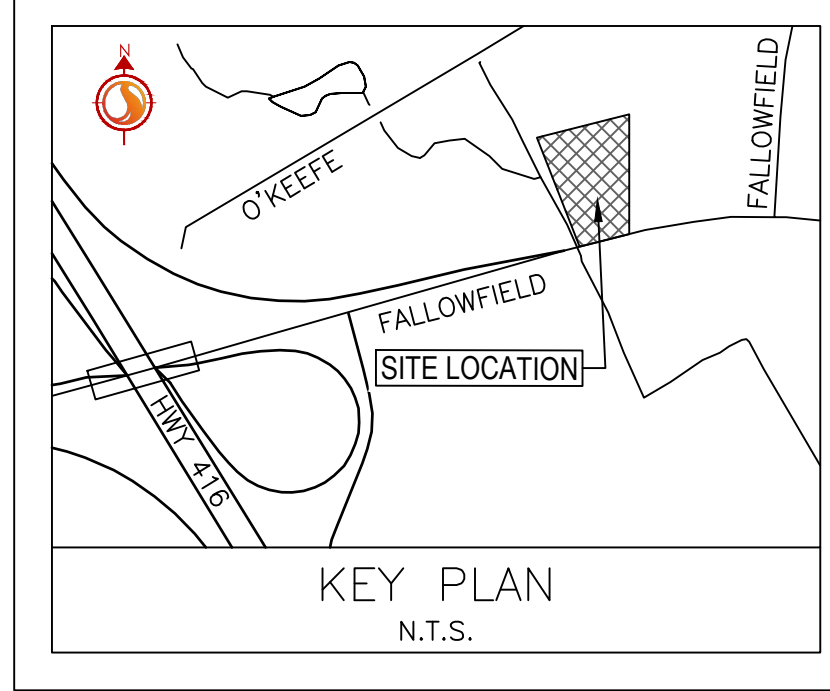
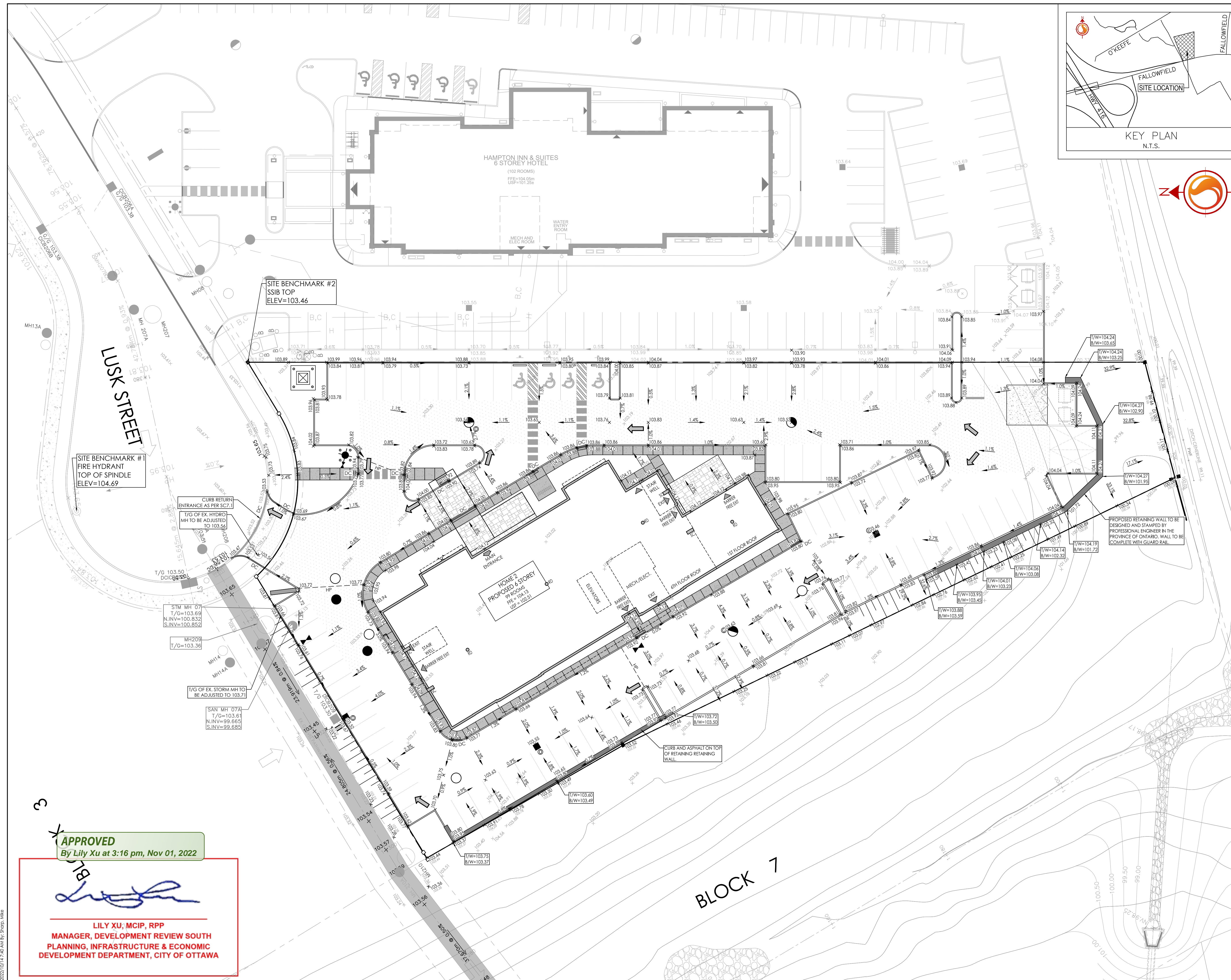
Permit-Seal

Client/Project
2441736 ONTARIO INC.
125 LUSK STREET, OTTAWA, ON, K2J 6S5
PHONE: 613-307-0412
BLOCK 10
HOME 2 - PROPOSED 6 STOREY
OTTAWA, ON, CANADA

Title
GRADING PLAN

Project No.	Scale	0	2.5	7.5	12.5m
160401620	1:250				

Drawing No.	Sheet	Revision
GP-1	4 of 7	2



SITE BENCHMARK #1
FIRE HYDRANT
TOP OF SPINDLE
ELEV=104.69

SITE BENCHMARK #2
SSIB TOP
ELEV=103.46

STM MH 07
T/G=103.69
N.I.V.=100.832
S.I.V.=100.852

MH209
T/G=103.36

T/G OF EX. STORM MH TO BE ADJUSTED TO 103.71

SAN MH 07A
T/G=103.61
N.I.V.=99.685
S.I.V.=99.685

APPROVED
By Lily Xu at 3:16 pm, Nov 01, 2022

LILY XU, MCIP, RPP
MANAGER, DEVELOPMENT REVIEW SOUTH
PLANNING, INFRASTRUCTURE & ECONOMIC
DEVELOPMENT DEPARTMENT, CITY OF OTTAWA