

Copyright Reserved

The Contractor shall verify and be responsible for all dimensions. DO NOT scale the drawing - any errors or omissions shall be reported to Stantec without delay.
The Copyrights to all designs and drawings are the property of Stantec. Reproduction or use for any purpose other than that authorized by Stantec is forbidden.

Legend

- C100A**
0.31 COM
SANITARY DRAINAGE AREA ID#
FLOW RATE IN (L/s) BASED ON MOTEL / HOTEL RATES USED FROM APPENDIX 4-A.4 OF THE OSDG, RESIDENTIAL PORTION WITH FULL HOUSEKEEPING FACILITIES @ 225L/day/p (ASSUMING DOUBLE OCCUPANCY PER ROOM) AND 125L/day/p FOR DINING ROOM.
SANITARY DRAINAGE AREA ha.
- G100A**
0.11 INFL
SANITARY DRAINAGE AREA ID#
INFILTRATION RATE OF 0.28 L/s/HG APPLIED
SANITARY DRAINAGE AREA ha.
- SANITARY DRAINAGE AREA
- PROPOSED SANITARY SEWER
- EXISTING SANITARY SEWER

Notes

Revision	By	Appd.	YY.MM.DD	
2	REVISD AS PER CITY COMMENTS	MJS	KJK	22.08.30
1	REVISD AS PER CITY COMMENTS	WAJ	KJK	22.06.03
0	ISSUED FOR SPA	MJS	TR	21.04.08

File Name:	Dwn.	Chkd.	Dgn.	YY.MM.DD
160401620 DB.dwg	MJS	KK	MJS	21.01.15

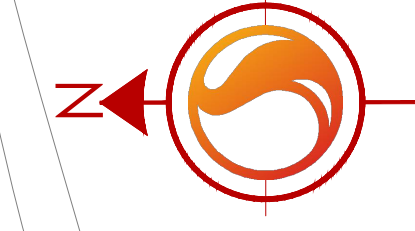
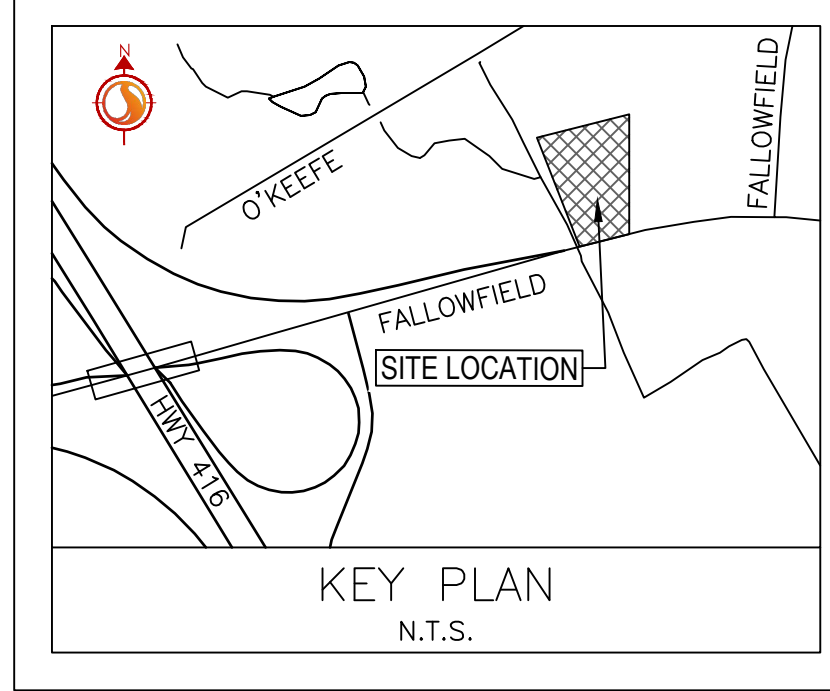
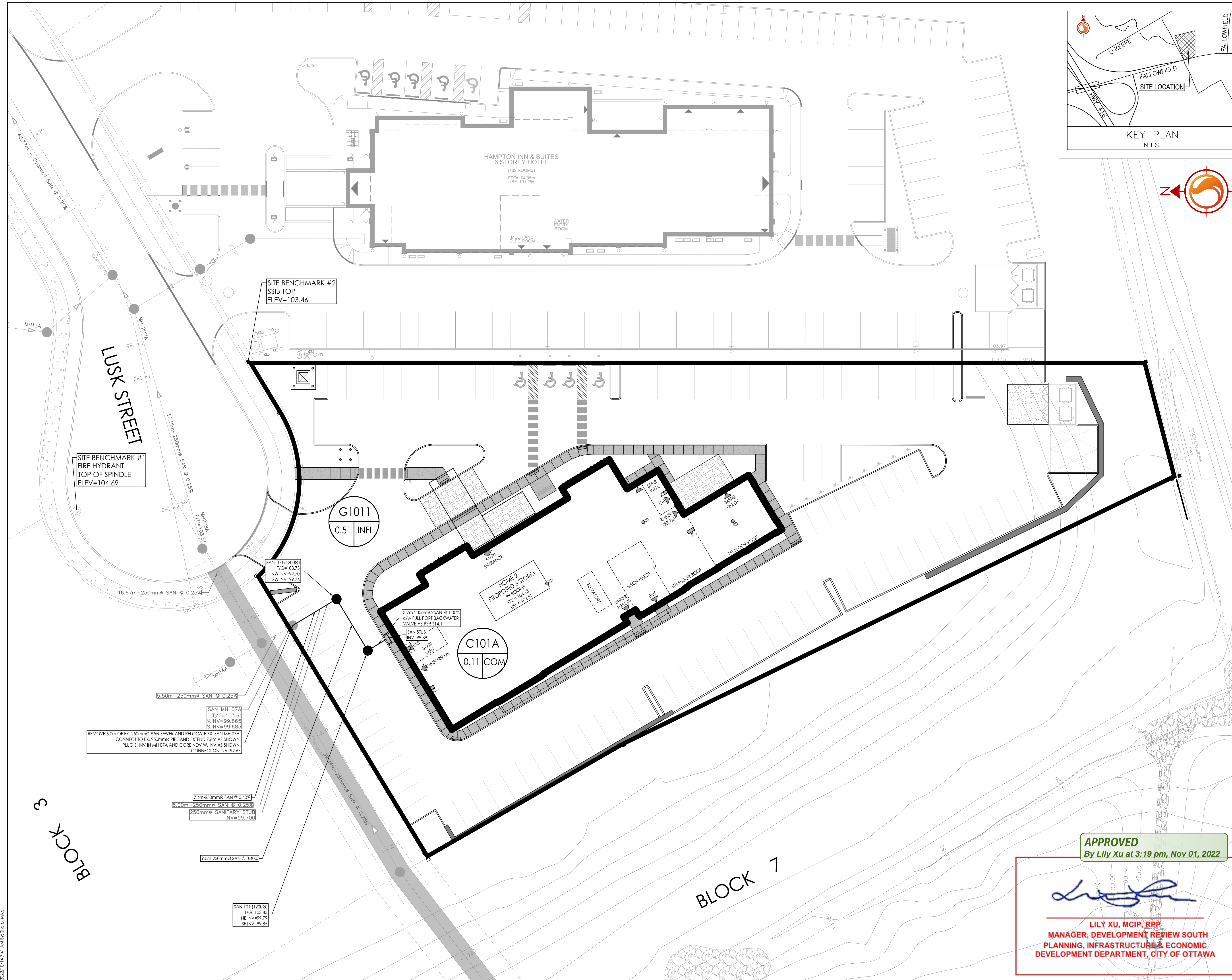
Permit-Seal

Client/Project
2441736 ONTARIO INC.
125 LUSK STREET, OTTAWA, ON, K2J 6S5
PHONE: 613-307-0412
BLOCK 10
HOME 2 - PROPOSED 6 STOREY
OTTAWA, ON, CANADA

Title
SANITARY DRAINAGE PLAN

Project No.	Scale	Sheet	Revision
160401620	1:250	7 of 7	2

SA-1



APPROVED
By Lily Xu at 3:19 pm, Nov 01, 2022

LILY XU, MCIP, RPP
MANAGER, DEVELOPMENT REVIEW SOUTH
PLANNING, INFRASTRUCTURE & ECONOMIC
DEVELOPMENT DEPARTMENT, CITY OF OTTAWA

\S:\1\604\1620\160401620.dwg design\drawing\160401620 DB.dwg
 2022/10/31 09:21 AM 8:50 PM
 ORIGINAL SHEET - ARCH D

D07-1221-0201