

Copyright Reserved

The Contractor shall verify and be responsible for all dimensions. DO NOT scale the drawing - any errors or omissions shall be reported to Stantec without delay.  
The Copyrights to all designs and drawings are the property of Stantec. Reproduction or use for any purpose other than that authorized by Stantec is forbidden.

Legend

- PROPOSED WATERMAIN
- PROPOSED VALVE AND VALVE BOX
- PROPOSED VALVE CHAMBER
- PROPOSED REDUCER
- PROPOSED FIRE HYDRANT
- PROPOSED SANITARY SEWER
- PROPOSED STORM SEWER
- PROPOSED CATCHBASIN
- CIRCULAR ORIFICE (SEE ICD TABLE ON SSP-1 AND SD-1)
- EX/FUT. WATERMAIN
- EXISTING/FUTURE VALVE AND VALVE BOX
- EXISTING/FUTURE VALVE CHAMBER
- EXISTING/FUTURE REDUCER
- EXISTING/FUTURE FIRE HYDRANT
- EXISTING/FUTURE SANITARY SEWER
- EXISTING/FUTURE STORM SEWER
- EXISTING/FUTURE CATCHBASIN MANHOLE
- EXISTING/FUTURE CATCHBASIN
- PROPOSED DEPRESSED CURB LOCATIONS
- PROPOSED BARRIER CURB
- THERMAL INSULATION ON STORM SEWER WHERE COVER IS LESS THAN 1.5m. THERMAL INSULATION ON WATERMAIN WHERE COVER IS LESS THAN 2.4m AS PER W22.
- WATER METER
- REMOTE WATER METER
- APPROXIMATE LOCATION OF PROPOSED SCUPPER AND ROOF DRAIN. REFER TO ARCHITECTURAL DRAWINGS FOR DETAILS

Notes

- 1 REVISED AS PER CITY COMMENTS
- 0 ISSUED FOR SPA

Revision	By	Appd.	YY.MM.DD
1	WAJ	KJK	22.06.03
0	MJS	TR	21.04.08

File Name:	160401620 DB.dwg	MJS	KK	MJS	21.01.15
Down.	Chkd.	Dgn.	YY.MM.DD		

Permit/Seal					
-------------	--	--	--	--	--

Client/Project	2441736 ONTARIO INC. 125 LUSK STREET, OTTAWA, ON, K2J 6S5 PHONE: 613-307-0412
Block	BLOCK 10 HOME 2 - PROPOSED 6 STOREY OTTAWA, ON, CANADA
Title	SITE SERVICING PLAN

Project No.	160401620	Scale	0 2.5 7.5 12.5m 1:250
Drawing No.	SSP-1	Sheet	3 of 7

Revision	1	Revision	
----------	---	----------	--

Project No.	160401620	Scale	0 2.5 7.5 12.5m 1:250
Drawing No.	SSP-1	Sheet	3 of 7

Client/Project	2441736 ONTARIO INC. 125 LUSK STREET, OTTAWA, ON, K2J 6S5 PHONE: 613-307-0412
Block	BLOCK 10 HOME 2 - PROPOSED 6 STOREY OTTAWA, ON, CANADA
Title	SITE SERVICING PLAN

Project No.	160401620	Scale	0 2.5 7.5 12.5m 1:250
Drawing No.	SSP-1	Sheet	3 of 7

Revision	1	Revision	
----------	---	----------	--

Project No.	160401620	Scale	0 2.5 7.5 12.5m 1:250
Drawing No.	SSP-1	Sheet	3 of 7

Client/Project	2441736 ONTARIO INC. 125 LUSK STREET, OTTAWA, ON, K2J 6S5 PHONE: 613-307-0412
Block	BLOCK 10 HOME 2 - PROPOSED 6 STOREY OTTAWA, ON, CANADA
Title	SITE SERVICING PLAN

Project No.	160401620	Scale	0 2.5 7.5 12.5m 1:250
Drawing No.	SSP-1	Sheet	3 of 7

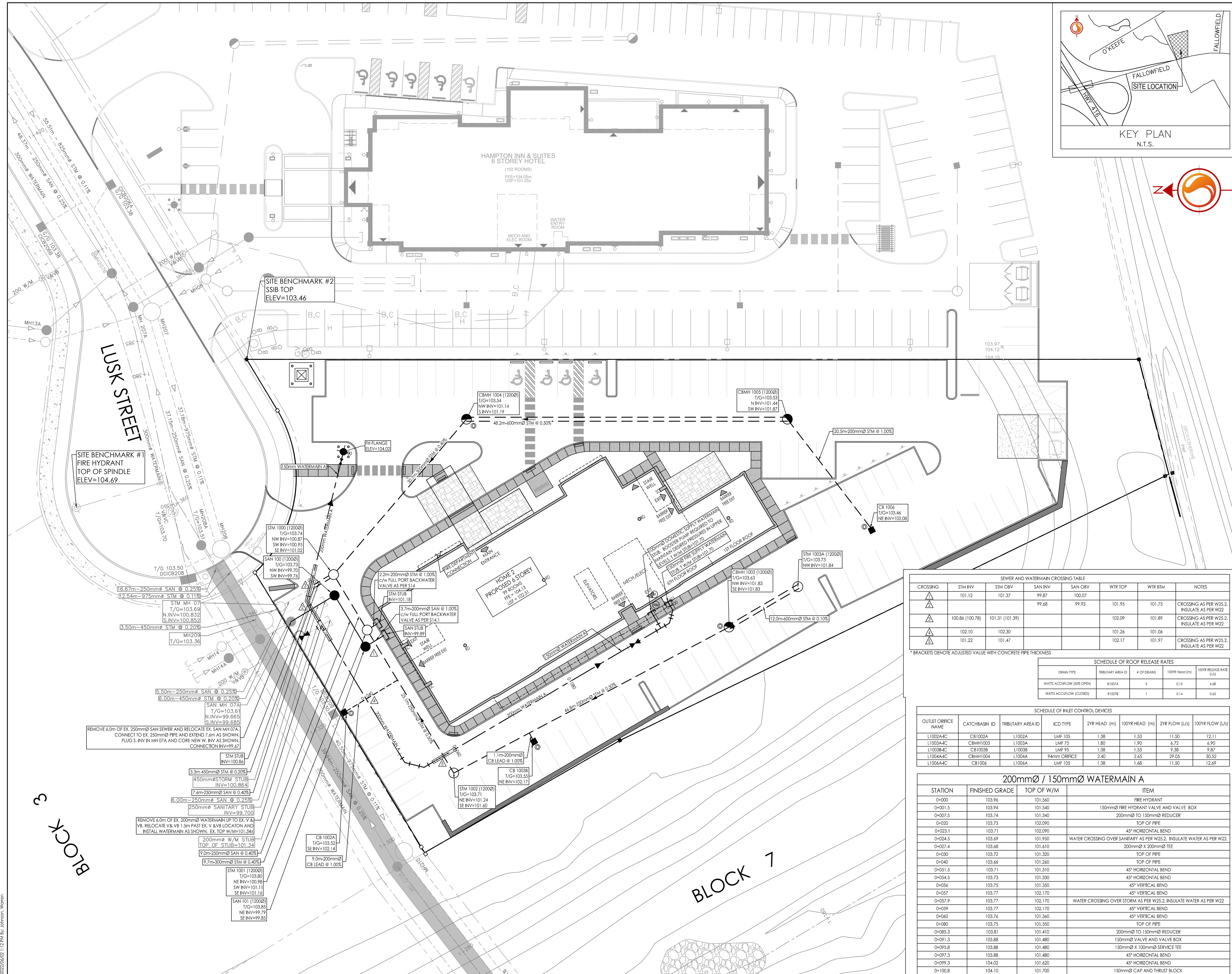
Revision	1	Revision	
----------	---	----------	--

Project No.	160401620	Scale	0 2.5 7.5 12.5m 1:250
Drawing No.	SSP-1	Sheet	3 of 7

Client/Project	2441736 ONTARIO INC. 125 LUSK STREET, OTTAWA, ON, K2J 6S5 PHONE: 613-307-0412
Block	BLOCK 10 HOME 2 - PROPOSED 6 STOREY OTTAWA, ON, CANADA
Title	SITE SERVICING PLAN

Project No.	160401620	Scale	0 2.5 7.5 12.5m 1:250
Drawing No.	SSP-1	Sheet	3 of 7

Revision	1	Revision	
----------	---	----------	--



CROSSING	STM INV	STM OBV	SAN INV	SAN OBV	WTR TOP	WTR BTM	NOTES
1	101.12	101.37	99.87	100.07			
2			99.68	99.93	101.95	101.75	CROSSING AS PER W25.2. INSULATE AS PER W22.
3	100.86 (100.78)	101.31 (101.39)			102.09	101.89	CROSSING AS PER W25.2. INSULATE AS PER W22.
4	102.10	102.30			101.26	101.06	
5	101.22	101.47			102.17	101.97	CROSSING AS PER W25.2. INSULATE AS PER W22.

DRAIN TYPE	TRIBUTARY AREA ID	# OF DRAINS	100YR HEAD (m)	100YR RELEASE RATE (L/s)
WATTS ACCU/FLOW (80% OPEN)	#100A	3	0.15	4.68
WATTS ACCU/FLOW (CLOSED)	#100B	1	0.14	0.63

OUTLET ORIFICE NAME	CATCHBASIN ID	TRIBUTARY AREA ID	ICD TYPE	2YR HEAD (m)	100YR HEAD (m)	2YR FLOW (L/s)	100YR FLOW (L/s)
L1002A-IC	CB1002A	L1002A	LMF 105	1.38	1.53	11.50	12.11
L1003A-IC	CBM1003	L1003A	LMF 75	1.80	1.90	6.72	6.90
L1002B-IC	CB1002B	L1002B	LMF 75	1.38	1.53	9.38	9.87
L1004A-IC	CBM1004	L1004A	94mm ORIFICE	2.40	2.45	29.05	30.52
L1006A-IC	CB1006	L1006A	LMF 105	1.38	1.68	11.50	12.69

STATION	FINISHED GRADE	TOP OF W/M	ITEM
0+000	103.96	101.560	FIRE HYDRANT
0+001.5	103.94	101.540	150mmØ FIRE HYDRANT VALVE AND VALVE BOX
0+007.5	103.74	101.340	200mmØ TO 150mmØ REDUCER
0+020	103.73	102.090	TOP OF PIPE
0+023.1	103.71	102.090	45° HORIZONTAL BEND
0+024.5	103.69	101.950	WATER CROSSING OVER SANITARY AS PER W25.2. INSULATE WATER AS PER W22.
0+027.4	103.68	101.410	200mmØ X 200mmØ TEE
0+030	103.72	101.320	TOP OF PIPE
0+040	103.66	101.260	TOP OF PIPE
0+051.5	103.71	101.310	45° HORIZONTAL BEND
0+054.5	103.73	101.330	45° HORIZONTAL BEND
0+056	103.75	101.350	45° VERTICAL BEND
0+057	103.77	102.170	45° VERTICAL BEND
0+057.9	103.77	102.170	WATER CROSSING OVER STORM AS PER W25.2. INSULATE WATER AS PER W22.
0+059	103.77	102.170	45° VERTICAL BEND
0+060	103.76	101.360	45° VERTICAL BEND
0+080	103.75	101.350	TOP OF PIPE
0+085.3	103.81	101.410	200mmØ TO 150mmØ REDUCER
0+091.3	103.88	101.480	150mmØ VALVE AND VALVE BOX
0+095.8	103.88	101.480	150mmØ X 100mmØ SERVICE TEE
0+097.3	103.88	101.480	45° HORIZONTAL BEND
0+099.3	104.02	101.420	45° HORIZONTAL BEND
0+100.8	104.10	101.700	150mmØ CAP AND THRUST BLOCK

2022/06/02 1:12 PM Design: [Name] 160401620 DB.dwg  
 ORIGINAL SHEET - ARCH D